

MODEL: NP6010No.: 1010-010 Rev. 1
(E2-12E-008-1)

DATE: 03.01.96

- | | |
|--|--|
| <input type="checkbox"/> Major quality issues | <input type="checkbox"/> Quality upgrade/production efficiency |
| <input checked="" type="checkbox"/> Field quality problems | <input type="checkbox"/> Miscellaneous |

**SUBJECT: MODIFICATION TO IEC 950 STANDARD FIGURE
(NOISE STANDARD)****Outline**

Accompanying production of the NP6010, which conforms to IEC 950 standard (noise standard), notification is made here of newly designated parts and modifications. See Figures 1 and 2 for the newly designated parts. When performing field maintenance, as before, refer to the Service Manual (FY8-1394-000), Service Handbook (FY8-2348-000) and Parts Catalog (FY8-3193-000).

Details

1. Main modifications

- Fixing unit
- Externals
- Mirror 1 mount
- Base plate unit

2. Modifications in the Part Catalog

a. Serial number

Main body 230V/50Hz F12-6572 TGA11660 ~ 19700

b. Interchangeability between old and new part.

The fixing unit in question does not provide compatibility between new and old types. Pay attention to the machine serial number whenever replacing the fixing unit; machines with the following numbers have been provided with measures:

[F12-6552]
FG5-1331-140 RRA00001 ~ XXXXX
FY6-0345-00S TGAXXXXX ~
[F12-6572]
FG5-1332-140 SMA00001 ~ XXXXX
FY6-0345-00S TGAXXXXX ~

In addition, a round blue sticker (16mm dia.) is attached to the ratings plate for identification of the NP6010 (IEC950).



C Changes in numbers

Fig./Key	Old	New	Description	Description
100-	—	FC2-2808-000	MESH	220/240V
100-	—	FB1-3890-000	MESH2	220/240V
100-6	FB1-5086-000	FF5-1835-00S	PANEL, UPPER REAR	220/240V
100-8	FF5-0836-000	FF5-1833-00S	PANEL, LOWER LIGHT	220/240V
100-13	FS5-8571-000	FB1-9489-00S	RATING PLATE	220/240V
250-	FG5-0230-000	FG5-0231-000	MAIN MOTOR ASSY	220/240V
400-30	FF1-9348-000	FF2-9823-000	CABLE	220/240V
103-27	FG5-0632-000	FG2-6818-00S	CABLE, DC	240V
810-24	FF5-0208-040	FF2-9818-000	GUIDE, UPPER	220/240V
810-35	FH7-4231-000	FH7-4232-000	HEATER, HALOGEN	220/240V
810-38	FB1-0279-000	FB1-0279-000	SHEET, INSTRUCTION	220/240V
810-	FG5-1331-140	FY6-0345-00S	FIXING ASSY	220V (NP6010)
810-	FG5-1332-140	FY6-0345-00S	FIXING ASSY	240V (NP6010)
810-	—	FF2-9822-000	CABLE, AC	220/240V
810-	—	FC2-2811-000	SPACER	220/240V
810-41	FB1-1535-000	FB1-1535-000	SHEET, INSTRUCTION	220/240V
810-42	FB1-1536-000	FB1-1536-000	SHEET, INSTRUCTION	220/240V

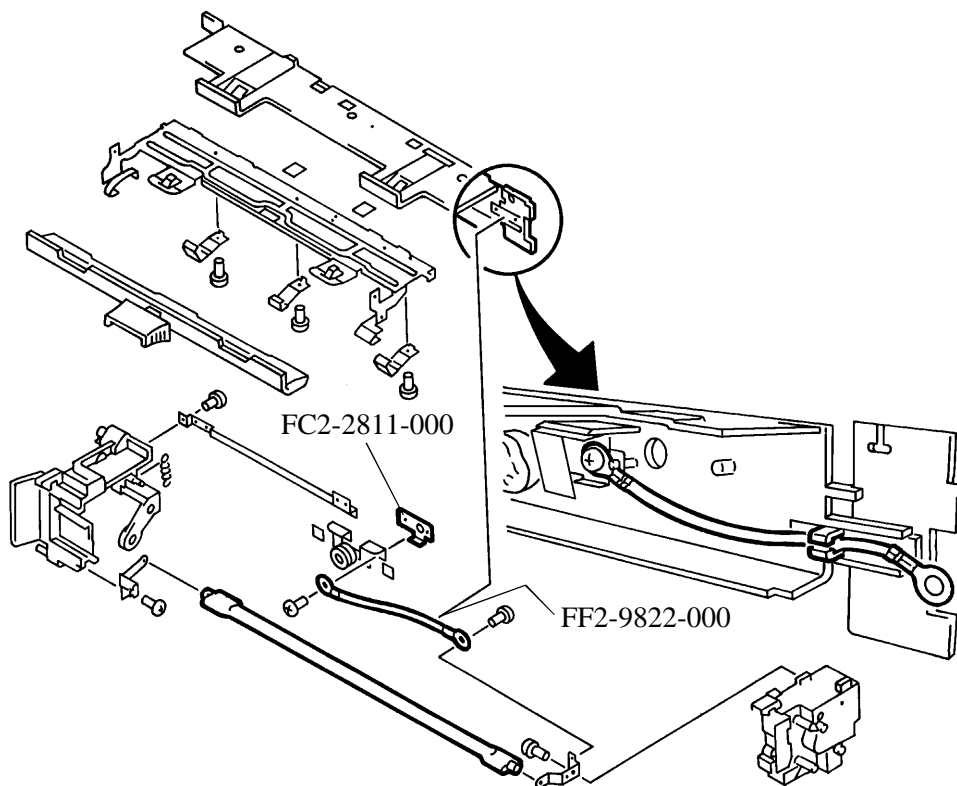


Fig. 1

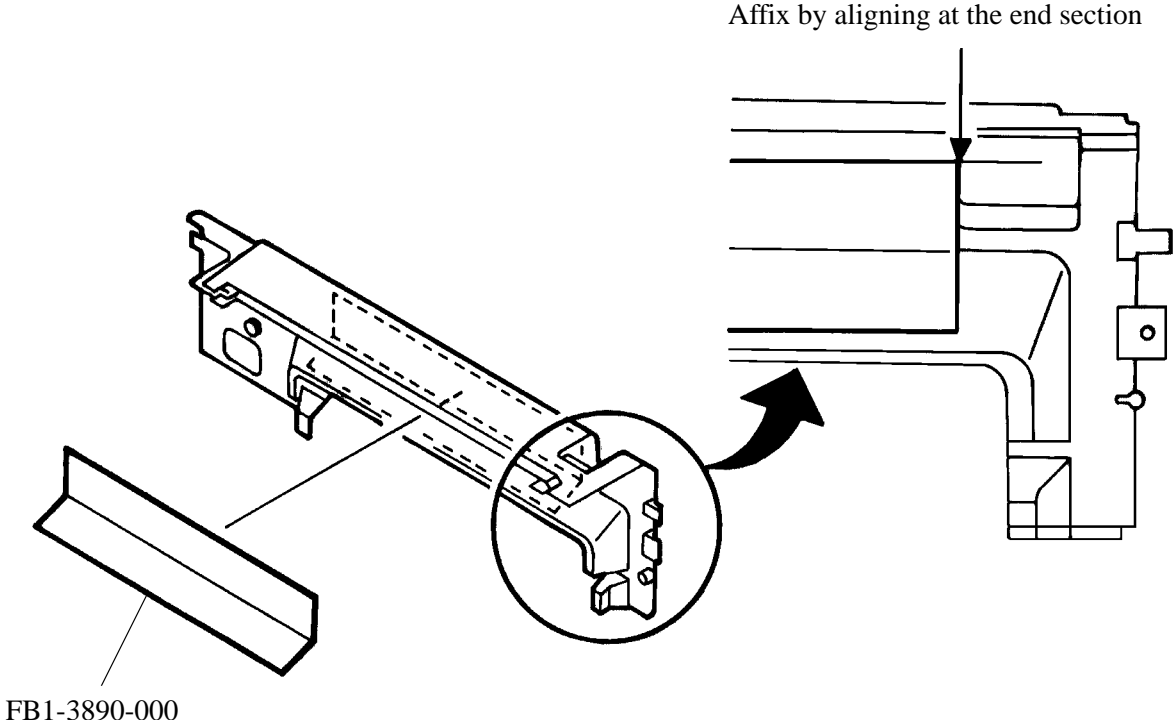
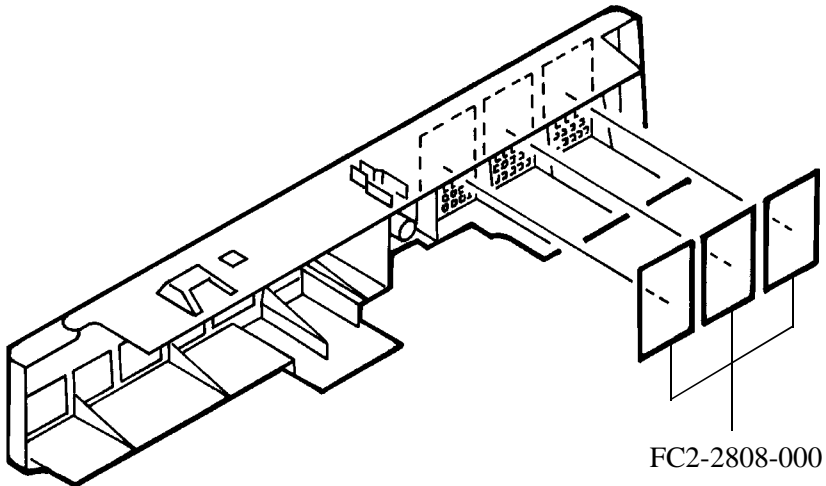


Fig. 2