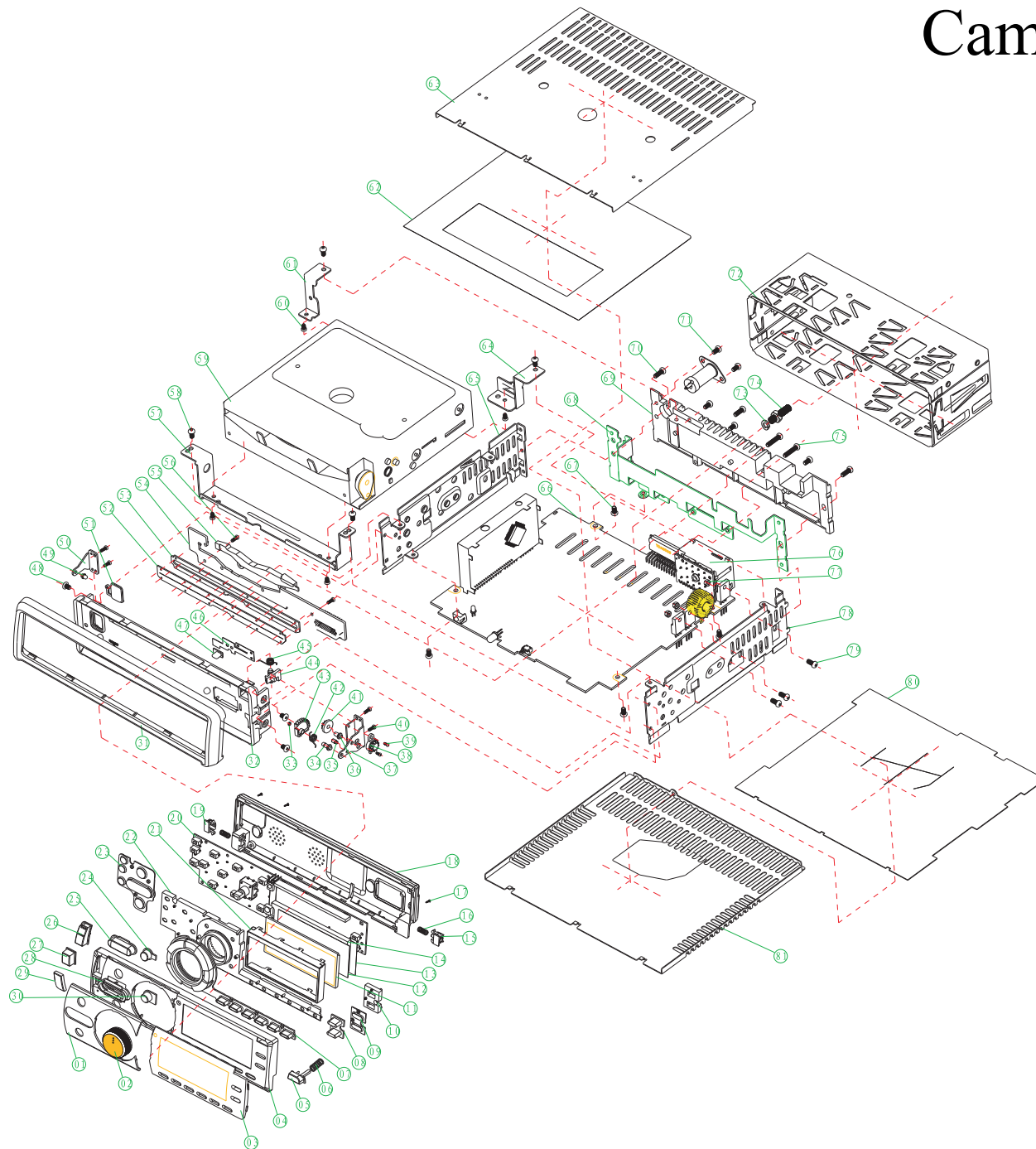


Cameron CA-555DVD



NO.	PART NO.	DESCRIPTION	QTY	SYMBOL
81	218-7605K00-E0600	DVD-7605 BOTTOM-COVER	1	
80	214-7605000-09F00	DVD-7605 MAIN-FIBRE	1	
79	234-PM03000-08000	MACHINE SCREW PM 3.0 x 6.0 MM	1	
78	218-7605L00-E1000	DVD-7605 SIDE-CHASSIS - (LEFT)	2	
77	233-NO30W00-H0000	HEX NUT; M3	1	ISO T-1.6MM
76	486-3300A00-8BK00	CD-3300 FIXED-ISO-CONNECTOR	4	
75	234-PM03000-13000	MACHINE SCREW PM 3.0 x 13.0 MM	2	
74	234-HEX5000-12000	HEX BOLT D6x12mm DOUBLE HEAD	1	
73	212-6209000-14800	SPRING WASHER ID=6.2x9.0x1.4T	1	
72	222-3896800-E0000	CD-3896 SLEEVE-CASE	1	ISO T-0.8mm
71	234-PT03000-05000	SCREW TTP 3.0 x 5 TAP TYPE (B)	6	
70	234-PT03000-08000	TAP TYPE "C" SCREW TTP M3.0 x 8.0 MM	1	
69	218-3300B00-C0000	HEAT-SINK-S CD-3300	1	
68	218-3898B00-E1000	CD-3898 BACK CHASSIS FOR ISO-CON	1	ISOV. GRAY BLACK
67	234-PT03000-05000	TAP TYPE SCREW TTP M3.0 x 5.0 MM	7	
66		MAIN-PCB-BOARD	1	
65	218-7605R00-E1000	DVD-7605 SIDE-CHASSIS - (RIGHT)	1	ISO T-1.6MM
64	218-7605Y00-E1000	DVD-7605 DECK-BRACKET - (LEFT)	1	ISO T-1.6MM
63	222-7605J00-E0800	DVD-7605 TOP-COVER	1	ISO T-0.8mm
62	228-7605A00-00000	DVD-7605 DUSTPROOF-FABRIC	1	
61	218-7605X00-E1000	DVD-7605 DECK-BRACKET - (RIGHT)	1	ISO T-1.6MM
60	234-PT02800-04000	SCREW; TS 2.6x4 TAP TYPE WHITE	6	BLACK BRACKET
59	203-DLC28D1-1200W	CAR DVD DECK DL-028D1 W/HOP1200W PICKUP	1	
58	234-PT03000-05000	SCREW TTP 3.0 x 6 TAP TYPE (B)	6	
57	218-3897K00-E1000	CD-3897 DECK-BRACKET "FRONT"	1	ISO T-1.6MM
56	234-PR02000-05000	SCREW PB 2.0 x 4.0 MM TR NICKLE	1	
55	414-7600L00-2CR00	CD-7600 CD-GUILD-REFLECTOR	1	ISOV. GLASS RED
54		CONNECTOR PCB	1	
53	243-3898A00-A0000	CD-3898 CD-GUIDE PLATE	1	P.V.F (BLACK) T-0.8mm
52	228-3898A00-00000	CD-3898 CD SLOT FELT	1	GLASS (BLACK)
51	430-7600A00-3CR00	CD-7600 EJ-KNOB	1	PC GLASS
50	218-7600I00-E1000	CD-7600 FRONT-BRACKET-} RIGHT {	1	BRASS 0.30
49	219-7600O00-R0000	CD-7600 REL-BRACKET-SHAFT-(RIGHT)	1	BRASS 0.30
48	234-M803000-04000	SCREW; M3 3.0 X 4.0 (5.6x1x4)	3	
47	456-7600A00-1BK00	CD-7600 PANEL DETECTING KNOB	1	PAV (BLACK)
46	217-7600A00-00000	CD-7600 DETECTING SWITCH SPRING-PLATE	1	
45	209-7600O00-L0000	HOOK-SPRING CD-7600 D4.8xL2.8x0.35T	1	STEEL 0.30 0.4
44	440-7600A00-3BK00	CD-7600 HOOK	1	PC BLACK
43	482-7600A00-9BK00	CD-7600 RELEASE-GEAR	1	PHENOLIC
42	209-7600O00-K0000	RELEASE-SPRING(BLACK) CD-7600 D6.2xL2.0x0.5T	1	
41	482-7600B00-9BK00	CD-7600 RELEASE-GEAR-B	1	PHENOLIC
40	234-PR02000-04000	SCREW PB 2.0 x 4.0 MM TR NICKLE	1	
39	234-PM02000-03000	MACHINE SCREW PM 2.0 x 3.0 MM	2	
38	482-2001A00-3BK00	VIDEO DAMPER AMPHY DPTV LATE (18-24) RED COLOR	1	
37	218-7600P00-E1000	CD-7600 FRONT-BRACKET-} LEFT {	1	ISO T-1.0 BLACK
36	219-7600O00-B0000	CD-7600 RELEASE-GEAR-SHAFT	1	BRASS 0.30
35	219-7600O00-A0000	CD-7600 STOP SHAFT	1	BRASS 0.30
34	219-7600O00-L0000	CD-7600 REL-BRACKET-SHAFT-(LEFT)	1	BRASS 0.30
33	332-2005000-03P00	PLAT-WABHER-AA 182.0X006.0 W/OPEN CUTTING	1	
32	402-7600A00-3BK00	CD-7600 BASE-PANEL	1	PC BLACK
31	441-7607A00-1BK00	CD-7607 TRIM-COVER	1	
30	446-7611B00-2BE00	CD-7611 } PTY } -KNOB	1	PAVA GRAY BLUED
29	464-7611A00-2BE00	CD-7611 } ORNAMENT } -KNOB	1	PAVA GRAY BLUED
28	483-7611B00-10000	CD-7611 } TRACK-UP-KNOB } -ORNAMENT	1	
27	446-7611A00-2BE00	CD-7611 } NOSE } -KNOB	1	PAVA GRAY BLUED
26	427-7611A00-2BE00	CD-7611 } POWER-SEL } -KNOB	1	PAVA GRAY BLUED
25	418-7611A00-2BE00	CD-7611 } TRK-UP-DN } -KNOB	1	PAVA GRAY BLUED
24	438-7611A00-2BE00	CD-7611 } MUTE } -KNOB	1	PAVA GRAY BLUED
23	460-7611A00-2CR00	CD-7611 } TRK-UP-DN } -KNOB BASE	1	PHENOLICGLASS SPY HIND
22	414-7611A00-2BE00	CD-7611 } CIRCLE } -REFLECTOR	1	PAVA GRAY BLUED
21	246-7607A01-BK010	CD-7607 LCD BRACKET-PASTER	1	ISO-CGLASS
20		FRONT-PCB	1	
19	482-7600D00-9BK00	CD-7600(RIGHT)-RELEASE-SHAFT-BASE	1	
18	402-7611C00-1BK00	CD-7611 NOSE-PIECE-BACK	1	PAV BLACK
17	234-PA02000-08B00	SCREW PA 2.0 x 8.0 MM BLACK	3	
16	209-7600O00-K0000	RELEASE-SPRING(BLACK) CD-7600	1	PHENOLICGLASS
15	482-7600C00-9BK00	CD-7600 } LEFT } RELEASE-SHAFT-BASE	1	PCV BLACK
14	414-7607500-2CR00	CD-7607 LCD-REFLECTOR	1	PHENOLICGLASS
13	246-7607A02-WB010	CD-7607 LCD REFLECTOR PAPER	1	PAV BKT
12	246-7607100-A0100	CD-7607 LCD-FILTER-} BIGH } 72.2x29	1	PAV BKT
11	008-TB143B1-TN08B	LCD DISPLAY TB143B1B1TW	1	
10	448-7611A00-2BE00	AF-TA-KNOB-REFLECTOR-CD7611	1	PAVA GRAY BLUED
09	480-7611B00-2CR00	CD-7611 } AF-TA } -KNOB BASE	1	PHENOLICGLASS SPY HIND
08	446-7611A00-2BE00	CD-7611 } AF-TA } -KNOB	1	PAVA GRAY BLUED
07	423-7611A00-2CR00	CD-7611 } BAND } -KNOB	1	PHENOLICGLASS
06	209-1188000-K0000	CD-1188 RELEASE SPRING	1	
05	439-7611A00-10000	CD-7611 } RELEASE } -KNOB	1	PAV NATURAL
04	402-7611B00-1BK00	CD-7611 NOSE-PIECE	1	PHENOLICGLASS
03	413-7611A00-2CR00	CD-7611 WINDOW	1	PHENOLICGLASS
02	428-9002A00-1N100	CMPV-9002 } VOL } -KNOB	1	PAV CRYSTAL
01	483-7611A00-10000	CD-7611 ORNAMENT	1	PAV BLACK

NO.	PART NO.	DESCRIPTION	QTY	SYMBOL
TOLERANCE				
	A	B		
1-4	0.06	0.10		
5-16	0.07	0.20		
17-100	0.10	0.30		
101-250	0.20	0.50		
251-900	0.30	0.80		

WIWI INDUSTRIES LIMITED				DATE	SYMBOL
EXPLODED VIEW				2007/JAN/01	DVD-7511
TITLE		MODEL NO.	PART NO.		
FINISHING		DRAWING NO.		DESIGNED BY.	
SCALE: FULL		UNIT:	QTY: 1	DESIGNED BY: Ilanghexin	
APPROVED BY:					

Spare Parts List (CA-555DVD)

Item	Description	QTY	Part № (Код ЗЧД=Номер ЗЧД)
1	CD-7511 ORNAMENT	1	483-7511A00-10000
2	CMPV-9002 { VOL } -KNOB	1	428-9002A00-1NL00
3	CD-7511 WINDOW	1	413-7511A00-2CR00
4	CD-7511 NOSE-PLIECE	1	402-7511B00-1BK00
5	CD-7511 { RELEASE } -KNOB	1	439-7511A00-10000
6	CD-1188 RELEASE SPRING	1	209-1188000-K0000
7	CD-7511 { BAND } -KNOB	1	423-7511A00-CCR00
8	CD-7511 { AF-TA } -KNOB	1	446-7511A00-2BE00
9	CD-7511 {AF-TA}-KNOB BASE	1	460-7511B00-CCR00
10	AF-TA-KN0B-REFLECT0R-CD7511	1	446-7511A00-2BE00
11	LCD DISPLAY TB1439BMTTN	1	008-TB14391-TN0RB
12	CD-7607 LCD-FILTER-{BIG} 72.2X29	1	245-7607100-A0100
13	CD-7607 LCD RREFLECTOR PAPER	1	246-7607A02-WE010
14	CD-7607 LCD-REFLECTOR	1	414-7607500-2CR00
15	CD-7500 {LEFT} RELEASE-SHAFT-BASE	1	462-7500C00-9BK00
16	RELEASE-SPING (BLACK) CD-7500	1	209-7500000-K0000
17	SCREW PA 2.0 x 8.0 MM BLACK	3	234-PA02000-08B00
18	CD-7511 NOSE-PIECE-BACK	1	402-7511C00-1BK00
19	CD-7500 {RIGHT}-RELEASE-SHAFT-BASE	1	462-7500D00-9BK00
20	FRONT-PCB	1	CA-555DVD-20
21	CD-7607 LCD BRACKET-PASTER	1	246-7607A01-BK010
22	CD-7511 {CIRCLE} -REFLECTOR	1	414-7511A00-2BE00
23	CD-7511 {TRK-UP-DN}-KN0B BASE	1	460-7511A00-CCR00
24	CD-7511 { MUTE }-KNOB	1	436-7511A00-2BE00
25	CD-7511 {TRK-UP/DN}-KNOB	1	418-7511A00-2BE00
26	CD-7511 {POWER-SEL}-KNOB	1	427-7511A00-2BE00
27	CD-7511 { MODE } -KNOB	1	445-7511A00-2BE00
28	CD-7511 {TRACK-UP-KNOB}-ORNAMENT	1	483-7511B00-10000
29	CD-7511 {ORNAMENT} -KNOB	1	454-7511A00-2BE00
30	CD-7511 { PTY } -KNOB	1	446-7511B00-2BE00
31	CD-7507 TRIM-COVER	1	441-7507A00-1BK00
32	CD-7500 BASE-PANEL	1	402-7500A00-3BK00
33	FLAT-WASHER-AA ID2.0XOD5.0 W/OPEN CUTTING	1	212-2005000-03P00
34	CD-7500 REL-BRACKET-SHAFT-(LEFT)	1	219-7500000-L0000
35	CD-7500 STOP SHAFT	1	219-7500000-A0000
36	CD-7500 RELEASE-GEAR-SHAFT	1	219-7500000-B0000
37	CD-7500 FRONT-BRACKET-{ LEFT }	1	218-7500F00-E1000
38	MICRO DAMPER ASS'Y DPP01 14TQ (19-24) RED COLOR	1	462-2001A00-3BK00
39	MACHINE SCREW PM 2.0 x 3.0 MM	2	234-PM02000-03000
40	SCREW PB 2.0 X 4.0 MM TS NICKLE	4	234-PB02000-04000
41	CD-7500 RELEASE-GEAR-B	1	462-7500B00-9BK00

42	RELEASE-SPRING(BLACK) CD-7500 D5.2XL3.0X0.5T	1	209-7500000-K0000
43	CD-7500 RELEASE-GEAR	1	462-7500A00-9BK00
44	CD-7500 HOOK	1	440-7500A00-3BK00
45	HOOK-SPRING CD-7500 D4.BXL2.8X0.35T	1	209-7500000-L0000
46	CD-7600 DETECTING SWITCH SPRING-PLATE	1	217-7600A00-00000
47	CD-7500 PANEL DETECTING KNOB	1	456-7500A00-1BK00
48	SCREW: MS 3.0 X 4.0 (5.5x1x4)	3	234-MS03000-04000
49	CD-7500 REL-BRACKET-SHAFT-(RIGHT)	1	219-7500000-R0000
50	CD-7500 FRONT-BRACKET-{ RIGHT }	1	218-7500G00-E1000
51	CD-7500 EJ-KNOB	1	430-7500A00-3CR00
52	CD-3888 CD SLOT FELT	1	228-3888A00-00000
53	CD-3888 CD-GUIDE PLATE	1	243-3888000-A0000
54	CONNECTOR PCB	1	H0B-7505S00-C00000-000
55	CD-7500 CD-GUILD-REFLECTOR	1	414-7500100-2CR00
56	SCREW PB 2.0 x 5.0 MM TS NICKLE		234-PB02000-05000
57	CD-3987 DECK-BRACKET-"FRONT"	1	218-3987C00-E1000
58	SCREW TTP 3.0 x 5 TAP TYPE (B)	6	234-PTT3000-05000
59	CAR DVD DECK DL-C28D1 W/HOP1200W PICK UP (without Servo Board)	1	203-DLC28D1-1200W
59	SERVO BOARD (for CD Deck)	1	D02-DVD7505-7500DD-200
59	SERVO BOARD WITH DVD DECK ASSY	1	CA-555DVD-92
60	SCREW: TS 2.6x4 TAP TYPE WHITE	5	234-PT02600-04000
61	DVD-7505 DECK-BRACKET - (RIGHT)	1	218-7505X00-E1000
62	DVD-7505 DUSTPROOF-FABRIC	1	228-7505A00-00000
63	DVD-7505 TOP-COVER	1	222-7505J00-E0600
64	DVD-7505 DECK-BRACKET - (LEFT)	1	218-7505Y00-E1000
65	DVD-7505 SIDE-CHASSIS - (RIGHT)	1	218-7505R00-E1000
66	MAIN-PCB-BOARD	1	CA-555DVD-66
67	TAP TYPE SCREW TTP M3.0 x 5.0 MM	7	234-PT03000-05000
68	CD-3988 BACK CHASSIS FOR ISO-CON	1	218-3988B00-E1000
69	HEAT-SINK-S CD-3300	1	216-3300B00-C0000
70	TAP TYPE"C" SCREW TTP M3.0 x 8.0 MM	1	234-PT03000-0B000
71	SCREW TTP 3.0 x 5 TAP TYPE (B)	6	234-PTT3000-05000
72	CD-3896 SLEEVE-CASE	1	222-3896S00-E0600
73	SPRING WASHER ID = 5.2x9.0x1.4T	1	212-5209000-14S00
74	HEX BOLT D5x12mm DOUBLE HEAD	1	234-HEX5000-12000
75	MACHINE SCREW PM 3.0 x 13.0 MM	2	234-PM03000-13000
76	CD-3300 FIXED-ISO-CONNECTOR	4	485-3300A00-8BK00
77	HEX NUT: M3	1	233-N030W00-H0000
78	DVD-7505 SIDE-CHASSIS - (LEFT)	2	218-7505L00-E1000
79	MACHINE SCREW PM 3.0 x 6.0 MM	1	234-PM03000-06000
80	DVD-7505 MAIN-FIBRE	1	214-7505000-05F00
81	DVD-7505 BOTTOM-COVER	1	218-7505K00-E0600
	FRONT PANEL ASSY	1	CA-555DVD-90
	REMOTE CONTROL	1	CA-555DVD-91

WIWI INDUSTRIES LIMITED

Product Code K02-DVD7511-270158-00A

Report Date 17/01/2007 10:08:43

Item	Material Code	Brief Description	Qty	Remarks
	K02-DVD7511-270158-00A	DVD-7511 RDS CAR DVD[CAMERON CA-555 DVD]-RU-64104T	1	
	C02-DVD7500-64104T-EU1	RDS/MW/FM/OIRT,DVD,40WX4,2N/2O,BISO,CAS'G	1	
1	010-351MT22-2600A	AMORPHOUS TOROID 350uH 6A 20% D22x14 H-TYPE L=4MM	1	L801
2	022-C101000-10000	PLUG TYPE FUSE 10A 32V RED COLOUR	1	
3	029-B000100-00000	ANTENNA JACK DOUBLE SCREW ANGLE SOLDER PLATE	1	
4	031-0050U00-15000	FFC 15PIN 1.25PT L=(3+50+3) 2896 ROHS FOR CD-7500	1	
5	037-G032000-101B1	RCA 1xSH 320mm YELLOW W/CLIP FOR DVD3000	1	YELLOW
6	037-G030000-201A0	2xRCA SKT W/O HOUS'G 3PIN 300mm BLK W/CLIP DVD7505	1	LINE-IN RCA
7	037-G030000-203A0	2xRCA SKT W/O HOUS'G 3PIN 300mm GRY W/CLIP DVD7505	1	REAR LINE-OUT RCA
8	209-7500000-K0000	RELEASE-SPRING(BLACK) CD-7500 D5.2XL3.0X0.5T	1	
9	209-7500000-L0000	HOOK-SPRING CD-7500 D4.8XL2.8X0.35T	1	
10	217-7600A00-00000	CD-7600 DETECTING SWITCH SPRING-PLATE	1	
11	212-2005000-03P00	FLAT-WASHER-AA ID2.0XOD5.0 W/OPEN CUTTING	1	
12	212-5209000-14S00	SPRING WASHER ID=5.2x9.0x1.4T	1	SET:1
13	214-7505000-05F00	DVD-7505 MAIN-FIBRE [T=0.5mm]	1	
14	216-7505B00-C0000	DVD-7505 HEAT-SINK W/SAND BLOWING [AL DIE CASTING]	1	
15	218-3988B00-E1000	CD-3988 BACK CHASSIS FOR ISO-CON [EGI-1.0]	1	
16	218-7500F00-E1000	CD-7500 FRONT-BRACKET-{ LEFT } [EGI-1.0]	1	
17	218-7500G00-E1000	CD-7500 FRONT-BRACKET-{ RIGHT } [EGI-1.0]	1	
18	218-7505K00-E0600	DVD-7505 BOTTOM-COVER [EGI-0.6]	1	
19	218-7505L00-E1000	DVD-7505 SIDE-CHASSIS - (LEFT) [EGI T=1.0]	1	
20	218-7505R00-E1000	DVD-7505 SIDE-CHASSIS - (RIGHT) [EGI T=1.0]	1	
21	219-7500000-A0000	CD-7500 STOP SHAFT [BRASS]	1	
22	219-7500000-B0000	CD-7500 RELEASE-GEAR-SHAFT [BRASS D.Ni]	1	
23	219-7500000-L0000	CD-7500 REL-BRACKET-SHAFT-(LEFT) [BRASS]	1	
24	219-7500000-R0000	CD-7500 REL-BRACKET-SHAFT-(RIGHT) [BRASS]	1	

Item	Material Code	Brief Description	Qty	Remarks
25	222-7505J00-E0600	DVD-7505 TOP-COVER [EGI T=0.6]	1	
26	225-0900700-40000	PAD CORK 9x7x4mm W/ADHESIVE	3	
27	227-8500A00-00000	CD-8500 EMI-CONDUCTIVE SPONGE 20X10X10MM	1	
28	228-3888A00-00000	CD-3888 CD SLOT FELT [60g/m2 NON WOVEN CLOTH]	1	
29	228-7505A00-00000	DVD-7505 DUSTPROOF-FABRIC	1	
30	233-N030W00-H0000	HEX NUT: M3	4	IC:2
31	234-HEX5000-12000	HEX BOLT D5x12mm DOUBLE HEAD [CARBON ST D.Zn]	1	
32	234-MS03000-04000	SCREW: MS 3.0 X 4.0 (5.5x1x4)	3	BASE PANEL:3
33	234-PB02000-04000	SCREW PB 2.0 x 4.0 MM TS NICKLE	4	RELEASE BRACKET:4
34	234-PB02000-05000	SCREW PB 2.0 x 5.0 MM TS NICKLE	2	CONNECTOR PCB:2
35	234-PM02000-03000	MACHINE SCREW PM 2.0 x 3.0 MM NICKLE ROUND HEAD	2	DAMPER:2
36	234-PM03000-06000	MACHINE SCREW PM 3.0 x 6.0 MM NICKLE ROUND HEAD	2	IC:2
37	234-PM03000-08000	MACHINE SCREW PM 3.0 x 8.0 MM NICKLE ROUND HEAD	2	IC:2
38	234-PM03000-13000	MACHINE SCREW PM 3.0 x 13.0 MM NICKLE ROUND HEAD	2	IC:2
39	234-PT03000-05000	TAP TYPE SCREW TTP M3.0 x 5.0 MM NICKLE ROUND HEAD	7	BRACKET+CHA:3 BET+MAIN PCB:1
40	234-PT03000-08000	TAP TYPE"C" SCREW TTP M3.0 x 8.0 MM NICKLE ROUND H	4	BRACKET:1 HEAT SINK+SIDE SHASSIS:2
41	234-PTT3000-05000	SCREW TTP 3.0 x 5 TAP TYPE (B)	6	COVER+HEAT SINK;3 ANT+HEAT SINK:2 DECK BKT+HEAT SINK:1
42	243-3099000-M0000	FF/REW COVER	1	
43	243-3888000-A0000	CD-3888 CD-GUIDE PLATE [PVC-0.5T BLACK]	1	
44	402-7500A00-3BK00	CD-7500 BASE-PANEL [PC BLACK]	1	
45	414-7500100-2CR00	CD-7500 CD-GUILD-REFLECTOR [PMMA CLEAR]	1	
46	430-7500A00-3CR00	CD-7500 EJ-KNOB [PC CLEAR]	1	
47	440-7500A00-3BK00	CD-7500 HOOK [PC BLACK]	1	
48	456-7500A00-1BK00	CD-7500 PANEL DETECTING KNOB [ABS] BLACK	1	
49	462-2001A00-3BK00	MICRO DAMPER ASS'Y DPP01 14TQ (19-24) RED COLOR	1	
50	462-7500A00-9BK00	CD-7500 RELEASE-GEAR [POM BLACK]	1	
51	462-7500B00-9BK00	CD-7500 RELEASE-GEAR-B [POM BLACK]	1	
52	802-0703E00-WE000	SILICONE GLUE 45gm	0.03	
	D02-DVD7505-7500DD-200	DVD-7500 DVD SERVO [ZORAN] SHINWA DECK ASSY	1	

Item	Material Code	Brief Description	Qty	Remarks
53	203-DLC28D1-1200W	CAR DVD DECK DL-C28D1 W/HOP1200W PICKUP [SHINWA]	1	
54	212-3006000-05F00	FIBER WASHER ID3.0 x OD6.0 x 0.5T	4	
55	214-3300000-B0000	CD-3300 DECK MOTOR-COVER-FIBRE [10x27mm] 0.5T	1	
56	214-DECK000-A0000	DECK FIBER 105x95x0.5mm	1	
57	216-3300B00-C0000	HEAT-SINK-S CD-3300 [IRON PLATE]	1	FOR MOTOR DRIVER IC
58	218-3987C00-E1000	CD-3987 DECK-BRACKET-"FRONT" [EGI T=1.0]	1	
59	218-7505X00-E1000	DVD-7505 DECK-BRACKET - (RIGHT) [EGI T=1.0]	1	
60	218-7505Y00-E1000	DVD-7505 DECK-BRACKET - (LEFT) [EGI T=1.0]	1	
61	234-BMT2000-05000	SCREW TTP 2.0 x 5.0 BM TAP TYPE	4	SUB PCB:4
62	234-PT02600-04000	SCREW: TS 2.6x4 TAP TYPE WHITE	5	DECK BRACKET:5
	H05-7500D00-D20000-000	DVD-7500 DVD SERVO BOARD [ZORAN] SHINWA HISEM	1	
63	002-S111718-F003A	IC S1117-18PI 1.8V 1A LDO REGULATOR [TO220F]	1	U502
64	004-SR23G00-00000	INFRARED EMITTING DIODE SR-23G/OSE-23G/OSE-23F	2	LD1,LD2
65	006-2700000-40000	CRYSTAL 27.000MHZ HC-49U/S 20P 30PPM	1	Y101
66	012-4226C00-30000	MINI E-CAP [4X5] 22uF 16V 20% 85C	1	C217.
67	012-4476C00-30000	MINI E-CAP [5X5] 47uF 16V 20% 85C	7	C324.229.228.209.159.158.319
68	012-5107C00-30000	MINI E-CAP [6x5] 100uF 16V 20% 85C	3	C201.504.503.
69	012-5227B00-30000	MINI E-CAP [6x5] 220uF 10V 20% 85C	5	C505.529.508.C244.17.
70	025-TA02000-33000	SWITCH 2P 3.3mm SW-111 HC-49S	1	SW1
71	031-F150100-22531	22PIN FFC CABLE L=150 PT=1.0 (5MM+3MM) UL W/TAPE	1	CN7
72	037-C609000-3B000	H'ING 3PIN P=2.5mm 1X28 2XSH 90mm	1	
	S05-7500D00-D20000-000	DVD-7500 DVD SERVO BOARD [ZORAN] SMTSEM	1	
73	001-7500D00-D2000	PCB DVD-7500 DVD SERVO BOARD W/MP3 [REV-5]	1	
74	002-0111700-U3300	IC S1117-33Q 3.3V 1A LDO [SOT223] AUK	2	U501.503.
75	002-0455800-G0000	IC TJM4558-C DUAL OP-AMP [SO8]	1	U303
76	002-9VF1601-U048D	IC SST39VF1601-70-4C-EK 16Mb FLASH ROM [TSOP48]	1	U106
77	002-BA5888F-D028A	IC BA5888FP BTL DRIVER FOR CD/CD-ROM FOR DVD-7505	1	U202.
78	002-K4S6416-U050D	IC 64M(4MX16) SDRAM K4S641632H-TC(L)70 [TSOP50]	1	U102
79	002-ZR36882-R208D	IC ZR36882ELCG DVD SERVO MCU [LQFP208] ZORAN	1	U101

Item	Material Code	Brief Description	Qty	Remarks
80	003-0390400-S0000	SMD TR-NPN UTC MMBT3904/2N3904 [SOT23]	3	Q312.313.303.
81	003-0390600-S0000	SMD TR-PNP UTC MMBT3906/2N3906 [SOT23]	2	Q304.305
82	003-STN2907-S0000	SMT TR-PNP STN2907S -60V,0.6A,HFE-75,MK"GA"[SOT23]	2	Q204.205.
83	004-0414800-S0000	CHIP-DIODE [0805] CD4148	3	D301.302.1.
84	004-SDB310W-SKD00	SMD 2XSCH-DIODE BAT54S OR SDB310WM 30V 0.2A[SOT23]	3	D501.204.104.
85	010-1R0KS08-00000	CHIP INDUCTOR [0805] 1uH 10% 50mA DCR<=0.4R	1	L501.
86	010-H010600-00000	CHIP-INDUCTOR [0805] 10uH 5% (15mA MAX)	2	L201.1
87	011-S000A00-20000	CHIP RES [0805] 0 OHM 5%	15	R239.160.164.166.275.272.259.252.2.133.11.10.1.FB110.FB106.
88	011-S010A00-20000	CHIP RES [0805] 1 OHM 5%	4	R274.273.256.255.
89	011-S100A00-20000	CHIP RES [0805] 10 OHM 5%	3	R224.221.202
90	011-S102A00-20000	CHIP RES [0805] 1K OHM 5%	9	R185.264.265.277.334.325.3.276.277
91	011-S103A00-20000	CHIP RES [0805] 10K OHM 5%	13	R501.503.502.247.237.236.254.267.3861.3832.311.281.2A0
92	011-S104A00-20000	CHIP RES [0805] 100K OHM 5%	2	R312.115
93	011-S121A00-20000	CHIP RES [0805] 120 OHM 5%	1	R203.
94	011-S151A00-20000	CHIP RES [0805] 150 OHM @5%	1	R9
95	011-S153A00-20000	CHIP RES [0805] 15K OHM @5%	1	R104
96	011-S202A00-20000	CHIP RES [0805] 2.0K OHM 5%	2	R299.R314
97	011-S203A00-20000	CHIP RES [0805] 20K OHM @5%	5	R101.3852.3851.12.3812
98	011-S221A00-20000	CHIP RES [0805] 220 OHM @5%	3	R533.222.223.
99	011-S223A00-20000	CHIP RES [0805] 22K OHM @5%	1	R292.
100	011-S224A00-20000	CHIP RES [0805] 220K OHM @5%	1	R112.
101	011-S273A00-20000	CHIP RES [0805] 27K OHM @5%	2	R127.128
102	011-S330A00-20000	CHIP RES [0805] 33 OHM @5%	2	R382.217.
103	011-S331A00-20000	CHIP RES [0805] 330 OHM @5%	1	R532.
104	011-S332A00-20000	CHIP RES [0805] 3.3K OHM @5%	1	R318
105	011-S333A00-20000	CHIP RES [0805] 33K OHM @5%	2	R278.R105
106	011-S390A00-20000	CHIP RES [0805] 39 OHM 5%	1	R279.
107	011-S391A00-20000	CHIP RES [0805] 390 OHM @5%	1	R106.

Item	Material Code	Brief Description	Qty	Remarks
108	011-S472A00-20000	CHIP RES [0805] 4.7K OHM \oplus 5%	19	R338.337.330.339.333.384.324. 380.320.329.327.328.119.120. 126.168.125.308.103.
109	011-S473A00-20000	CHIP RES [0805] 47K OHM \oplus 5%	5	R313.540.539.244.139.
110	011-S560A00-20000	CHIP RES [0805] 56 OHM 5%	1	R123.
111	011-S682A00-20000	CHIP RES [0805] 6.8K OHM 5%	1	R248
112	011-S750A00-20000	CHIP RES [0805] 75 OHM 5%	3	R110.129.113.
113	011-S910A00-20000	CHIP RES [0805] 91 OHM 5%	2	R283.270.
114	013-D106L00-50A00	TAN CHIP CAP 10uF 10V \oplus 20% [A SIZE]	1	C317
115	013-D106M06-S2012	CHIP TAN CAP 10uF 6.3V 20% [2012] (0805) SIZE REEL	2	C2.3
116	013-D107J00-50C00	TAN CHIP CAP 100uF 6.3V 20% [B/C SIZE]	1	C122.
117	013-D226J00-50A00	TAN CHIP CAP 22uF 6.3V 20% [A SIZE]	1	C108.
118	013-D227J00-50C00	TAN CHIP CAP 220uF 6.3V 20% "C-Size"	2	C120.C318.
119	013-D476J00-50A00	CHIP TAN CAP 20% 47uF 6.3V [A-SIZE]	2	C16.124
120	014-S100C00-200NP	CHIP CAP [0805] 10PF 50V +/-0.5P NPO	1	C520
121	014-S101C00-400NP	CHIP CAP [0805] 100PF 50V +/-5% NPO	2	C218.247
122	014-S102C00-50000	CHIP CAP [0805] 102P (0.001uF) 50V \oplus 10%	13	C166.167.179.165.105.104.102.212. 168.110.109.178.9
123	014-S103C00-50000	CHIP CAP [0805] 103P (0.01uF) 50V +/-10%	28	C556.154.152.141.149.155.140.139. 150.142.136.162.130.554.553.18.13 5.137.138.146.123.196.121.555.147. 12.119.163.
124	014-S104B00-80000	CHIP CAP [0805] 104P (0.1uF) 25V +80-20%	16	C343.246.245.274.103.270.208.8. 207.204.203.560.530.125.242.241.
125	014-S151C00-50000	CHIP CAP [0805] 151P (150PF) 50V 10%	2	C511.C521.
126	014-S181C00-50000	CHIP CAP [0805] 180PF 50V 10%	2	C331.321.
127	014-S201C00-50000	CHIP CAP [0805] 201P (200PF) 50V 10%	2	C335.325
128	014-S220C00-400NP	CHIP CAP [0805] 22PF 50V +/-5% NPO	2	C114.115.
129	014-S221C00-50000	CHIP CAP [0805] 221P (220PF) 50V 10%	1	C544.
130	014-S223C00-80000	CHIP CAP [0805] 223P (0.022uF) 50V +80-20%	2	C251.C1.
131	014-S273C00-50000	CHIP CAP [0805] 0.027UF 50V 10%	1	C101.
132	014-S330C00-400NP	CHIP CAP [0805] 33PF 50V +/-5% NPO	16	C197.107.195.194.192.193.190.191. 189.186.187.188.336.332.326.322
133	014-S471C00-50000	CHIP CAP [0805] 471P (470PF) 50V 10%	2	C205.216
134	036-G00500A-242L0	SMT 24P FFC CONN PT=0.5 H-TYPE UPPER CONTACT	1	CN3

Item	Material Code	Brief Description	Qty	Remarks
135	057-121T000-S0200	CHIP BEAD [0603] R=120R/100MHz DCR=0.25, 0.5A(MAX)	9	FB502.111.112.105.102.FB101.501.503.505.
	H01-7500S00-DM1000-EU4	DVD-7511 RDS/MW/FM/OIRT,DVD,40WX4,2N/2O,BISO M.HIS	1	
136	002-0078L15-T003A	IC LM78L15 15V 0.1A [TO92] 3PIN REGULATOR	1	IC802.
137	002-0455800-G0000	IC TJM4558-C DUAL OP-AMP [SO8]	2	IC902.901
138	002-0729100-A0000	IC TA7291S (SIP-9) BRIDGE MOTOR DRIVER	1	IC603
139	002-1923F00-G0700	IC BU1923F RDS DECODER	1	IC2
140	002-2313L00-B0000	IC PT2313L AUDIO PROCESSOR [SOP28]	1	IC401
141	002-72F321A-H064D	IC 72F321R9T6 MCU W/SOFTWARE [QFP64] DVD7508/RDS	1	U1
142	002-78L0500-F0000	IC KIA78L05 5V 0.1A REGULATOR [TO92] KEC	1	U2
143	002-9256F00-G0200	IC KIC9256F FM PLL [SOP16]	1	IC101
144	002-LM2576T-F005A	IC LM2576T-ADJ 3A STEP-DN POWER REG 5PIN [TO220]	1	Q6
145	002-TDA7454-W025A	IC TDA7454 4X35W CAR AUDIO AMP [FLEXIWATT25] ST	1	C801
146	003-0130300-D0300	TR-NPN KTD-1303 [TO-92M] AUDIO MUTING (25V 0.3A)	4	Q4.3.2.1
147	003-0136800-C0000	TR-PNP KTB1368-O -80V -4A 25W [TO-220IS]	1	Q804.
148	003-1267Y00-A0000	TR-PNP KTA1267-Y [TO-92M] GENERAL USE (-50V 0.15A)	1	Q104
149	003-3199Y00-A0000	TR-NPN KTC3199-Y [TO-92M] GENERAL USE (50V 0.15A)	3	Q401.811.110.
150	003-B1243Q0-J0700	TR-PNP 2SB1243-Q POWER -60V,3A,1W [ATV-ROHM]	4	Q109.814.812.806.
151	003-D1859Q0-J0700	TR-NPN 2SD1859-Q MED.POWER 80V,0.7A,1W [ATV-ROHM]	2	Q5.809.
152	004-0400100-00000	DIODE 1N4001 50V 1A	2	D802.807.
153	004-0414800-00000	DIODE 1N4148	11	D805.721.702.402.401.808.710.708.704.806.709.
154	004-0581800-00000	SCHOTTKY DIODE 1N5818 30V 1A	1	D1
155	005-0004700-A0000	ZENER DIODE 4.7V 1/2W +/-5%	1	
156	005-0005100-A0000	ZENER DIODE 5.1V 1/2W +/-5%	1	
157	005-0005600-A0000	ZENER DIODE 5.6V 1/2W +/-5%	1	ZD804.
158	005-0006200-A0000	ZENER DIODE 6.2V 1/2W +/-5%	4	ZD705.706.704.703.
159	005-0006800-A0000	ZENER DIODE 6.8V 1/2W +/-5%	1	ZD831
160	005-0008200-A0000	ZENER DIODE 8.2V 1/2W +/-5%	2	ZD1.ZD401
161	005-0009100-A0000	ZENER DIODE 1/2W 9.1V	2	ZD701.803.
162	006-0433200-40000	CRYSTAL 4.332MHz HC49US 30PPM CL=16PF	1	X702

Item	Material Code	Brief Description	Qty	Remarks
163	006-0450000-40000	CRYSTAL 4.5MHz HC-49US 30P 30PPM H=3.5	1	X101
164	006-0800000-40000	CRYSTAL 8.0MHz [HC-49U/S] +/-30PPM CL=16PF	1	X701.
165	009-0702000-A0200	TUNER CET-7020YC/E AM/FM OIRT [TAEBONG]	1	TUNER
166	010-220KRAE-22200	POWER INDUCTOR 22uH 20% 2.2A [D10x14.5MM] LEADFREE	1	L1
167	010-221KT15-20500	TOROID 227uH 10% 2PIN D16x10mm (WIRE 0.5x70.5Ts)	1	L3
168	010-330KA24-20000	INDUCTOR [EC24] 33uH 10% Q=50 AXIAL	2	L802.L103
169	010-3R3KA22-20000	INDUCTOR [EC22] 3.3uH 10% AXIAL TYPE	1	L101.
170	011-A100D00-20000	RES 1/4W \pm 5% 10 OHM	1	R815
171	011-A103A00-20000	RES 1/16W \pm 5% 10K OHM	2	R810.813.
172	011-A151A00-20000	RES 1/16W \pm 5% 150 OHM	1	R405
173	011-A222A00-20000	RES 1/16W \pm 5% 2.2K OHM	2	R842.812.
174	011-A229A00-20000	RES 1/16W 5% 2.2 OHM	1	R37
175	011-A471A00-20000	RES 1/16W \pm 5% 470 OHM	1	R5
176	011-A474A00-20000	RES 1/16W \pm 5% 470K OHM	2	R807.808.
177	011-A479A00-20000	RES 1/16 W \pm 5% 4.7 OHM	1	R623
178	011-A479F00-20000	CF-RES 1/2 W 5% 4.7 OHM	1	R825B
179	011-A562A00-20000	RES 1/16W \pm 5% 5.6K OHM	2	R29.28.
180	012-1107C00-30000	MINI E-CAP [5x7] 100uF 16V 20% 85C	18	C828.825.832.824.8.120.121.117.83 7.836.902.410.137.901.1.16.2.703
181	012-1476C00-30000	MINI E-CAP [5x7] 47uF 16V 20% 85C	2	C409.810.
182	012-5227B00-30000	MINI E-CAP [6x5] 220uF 10V 20% 85C	1	C604.
183	012-B105F00-30000	MINI E-CAP [4x7] 1uF 50V 20% 85C	23	C904.424.838.531.532.802.803.416. 414.903.906.412.905.413.411.804. 138.719.801.811.132.425.CE203.
184	012-B106D00-30000	MINI E-CAP [4x7] 10uF 25V 20% 85C	5	C842.829.426.721.812.
185	012-B225F00-30000	MINI E-CAP [4x7] 2.2uF 50V 20% 85C	3	C821.108.107.
186	012-B475F00-30000	MINI E-CAP [4x7] 4.7uF 50V 20% 85C	4	C10.3.128.4.
187	012-R228D00-30000	E-CAP [13x26] 2200uF 25V 20% 85C	1	C813
188	014-A103C00-60000	CER CAP 103P (0.01uF) 50V \pm 20%	1	C106.
189	023-A005000-RD000	LED RED DIA=5mm 2V/20mA 25-40mcd	1	D2
190	025-LF1120B-00000	MICRO DETECTOR SWITCH [1P1T] 1120B FOR CD7600	1	Q8

Item	Material Code	Brief Description	Qty	Remarks
191	025-TA04000-38500	4P TACT SW H=3.85 169G/F	1	JP1
192	033-S100000-BN000	S.SHIELD WIRE #28 100MM(3+94+3) BROWN	1	
193	035-E080000-RD100	JUMPER WIRE AWG#26 80mm RED (3+80+3)	2	
194	036-D01000A-2220A	22P FFC CONN PT=1.0 L-DIP TYPE-A UPPER CONTACT	1	
195	221-S004000-04000	BARE WIRE D=0.4x40mm	130	
	S01-7500S00-DM1000-EU4	RDS/MW/FM/OIRT,DVD,40WX4,2N/2O,BISO M.SMT	1	
196	001-7500S00-DM100	PCB DVD-7500 RDS MAIN BOARD [REV-C]	1	
197	003-0011400-S0700	SMT TR-NPN DTC-114TUA [SOT-23]	1	Q16.
198	003-0150400-B0300	SMT TR-PNP KTA1504S-GR/A1980S/F [SOT-23] 50V 0.15A	1	Q15.
199	003-0387500-G0000	SMT TR-NPN KTC3875S/2SC-5343S/F [SOT-23] 50V 0.15A	14	Q803.813.808.102.103.106.108.101.802.703.7.606.605.105.
200	004-0414800-S0000	CHIP-DIODE [0805] CD4148	2	D804.101.
201	011-S000A00-20000	CHIP RES [0805] 0 OHM 5%	13	R4.3.2.10.36.35.34.6.RJ5.RJ9.R622.190.C101
202	011-S101A00-20000	CHIP RES [0805] 100 OHM 5%	3	R140.915.129
203	011-S102A00-20000	CHIP RES [0805] 1K OHM 5%	14	R111.117A.411.729.727.726.38.725.120.119A.121.249.41.9
204	011-S103A00-20000	CHIP RES [0805] 10K OHM 5%	41	R25.24.23.853.134.840.839.721.707.138.137.117.132.122.139.20.126.125.124.827.830.831.811.805.802.13.12.716.714.713.712.711.115.705.40.7.750.751.752.39.624
205	011-S104A00-20000	CHIP RES [0805] 100K OHM 5%	4	R131.814.119.412.
206	011-S122A00-20000	CHIP RES [0805] 1.2K OHM 5%	4	R27.26.851.852.
207	011-S151A00-20000	CHIP RES [0805] 150 OHM @5%	1	R723
208	011-S153A00-20000	CHIP RES [0805] 15K OHM @5%	2	R11.14
209	011-S220A00-20000	CHIP RES [0805] 22 OHM 5%	1	R142.
210	011-S222A00-20000	CHIP RES [0805] 2.2K OHM 5%	16	R108.107.133.113.112.404.403.103.101.128.829.409.127.102.114.133.
211	011-S223A00-20000	CHIP RES [0805] 22K OHM @5%	5	R724.701.819.722.913.
212	011-S224A00-20000	CHIP RES [0805] 220K OHM @5%	3	R818.720.719.
213	011-S273A00-20000	CHIP RES [0805] 27K OHM @5%	2	R837.914.
214	011-S331A00-20000	CHIP RES [0805] 330 OHM @5%	4	R615.616.141.143.
215	011-S332A00-20000	CHIP RES [0805] 3.3K OHM @5%	8	R519.518.135.136.8.109.17.601
216	011-S333A00-20000	CHIP RES [0805] 33K OHM @5%	1	R806.

Item	Material Code	Brief Description	Qty	Remarks
217	011-S472A00-20000	CHIP RES [0805] 4.7K OHM \oplus 5%	9	R841.838.617.710.709.626.820.621.708.
218	011-S473A00-20000	CHIP RES [0805] 47K OHM \oplus 5%	17	R130.809.408.407.904.903.902.19.18.901.905.906.907.908.801.16.118
219	011-S474A00-20000	CHIP RES [0805] 470K OHM \oplus 5%	2	R33.32.
220	011-S562A00-20000	CHIP RES [0805] 5.6K OHM \oplus 5%	11	R31.30.116.824.823.822.821.401.402.516.517
221	011-S681A00-20000	CHIP RES [0805] 680 OHM +/-5%	2	R110.826.
222	011-S682A00-20000	CHIP RES [0805] 6.8K OHM 5%	4	R912.911.910.909.
223	011-S684A00-20000	CHIP RES [0805] 680K OHM \oplus 5%	1	R410
224	011-S753A00-20000	CHIP RES [0805] 75K OHM 5%	2	R1.731.
225	014-S101C00-400NP	CHIP CAP [0805] 100PF 50V +/-5% NPO	4	C20.19.18.17.
226	014-S102C00-50000	CHIP CAP [0805] 102P (0.001uF) 50V \oplus 10%	10	C808.136.534.533.135.113.112.805.806.807.
227	014-S103C00-50000	CHIP CAP [0805] 103P (0.01uF) 50V +/-10%	6	C114.725.726.123.124.122.
228	014-S104B00-80000	CHIP CAP [0805] 104P (0.1uF) 25V +80-20%	16	C7.422.421.405.730.822.208.621.722.406.835.403.404.402.401.814.
229	014-S105A00-80000	CHIP CAP [0805] 105P (1uF) 16V +80-20%	2	C423.417.
230	014-S200C00-400NP	CHIP CAP [0805] 20PF 50V +/-5% NPO	2	C708.709
231	014-S220C00-400NP	CHIP CAP [0805] 22PF 50V +/-5% NPO	1	C701.
232	014-S222C00-50000	CHIP CAP [0805] 222P (0.0022uF) 50V 10%	2	C408.407.
233	014-S223C00-80000	CHIP CAP [0805] 223P (0.022uF) 50V +80-20%	25	C831.705.111.826.827.415.126.728.729.603.830.602.118.139.127.840.131.133.110.103.704.134.104.109.105.
234	014-S270C00-400NP	CHIP CAP [0805] 27PF 50V +/-5% NPO	1	C702.
235	014-S271C00-50000	CHIP CAP [0805] 271P (270PF) 50V 10%	1	C706
236	014-S300C00-400NP	CHIP CAP [0805] 30PF 50V +/-5% NPO	2	C116.115.
237	014-S472C00-50000	CHIP CAP [0805] 472P (0.0047uF) 50V 10%	2	C11.9
238	014-S561C00-50000	CHIP CAP [0805] 561P (560PF) 50V 10%	1	C707.
	H04-3300D00-A90000-000	CD-3300 ISO BOARD (W/POWER ANT) HISEM	1	
239	001-3300D00-A9000	P.C.B ISO BOARD	1	
240	004-1N5404A-00000	DIODE-RECTIFIER 1N5404, 400V 3A [DO-201AD] PACKING	1	
241	036-K025000-12000	12Pin P=2.5mm PCB Connector Right Angle	1	
242	263-3300000-A0000	TERMINAL-FUSE	2	
243	263-3300000-B0000	CD-3300 ISO SOCKET - TERMINAL-CONTACT [COPPER]	11	

Item	Material Code	Brief Description	Qty	Remarks
244	263-3300001-C0000	CD-3300 ISO SOCKET-TERMINAL -{ 1 } [COPPER] 0.6MM	1	
245	485-3300A00-8BK00	CD-3300 FIXED-ISO-CONNECTOR-NYLON 66 (BLACK)	1	
	H0B-7505S00-C00000-000	DVD-7505 CONNECTOR BOARD HAND INSERT	1	
246	001-7505S00-C0000	PCB DVD-7505 CONNECTOR BOARD [REV-1]	1	
247	011-S561A00-20000	CHIP RES [0805] 560 OHM 5%	1	R1
248	023-A003000-RD300	LED D=1.8 RED(660nm)H.BRIGHT 220mcd 1.9V20MA 52DEG	1	D1
249	025-TA02000-26000	TACT-SW 2P TP-1126C 3X6MM H=2.6MM DIP TYPE	1	
250	036-J020000-18000	DETACHABLE CON 18P P=2.0mm SOCKET	1	
	F02-DVD7511-000000-000	DVD-7511 FRONT W/TB1439B LCD(WE/BL) REMOTE PANEL	1	
251	209-1188000-K0000	CD-1188 RELEASE SPRING	1	
252	227-7608G00-A0000	CD-7608 SENSOR-SPONGE [BLACK]	1	
253	234-PA02000-08B00	SCREW PA 2.0 x 8.0 MM BLACK	3	N/BACK:3
254	402-7511B00-1BK00	CD-7511 NOSE-PLIECE [ABS] BLACK	1	
255	402-7511C00-1BK00	CD-7511 NOSE-PIECE-BACK [ABS] BLACK	1	
256	413-7511A00-2CR00	CD-7511 WINDOW [PMMA CLEAR]	1	
257	418-7511A00-2BE00	CD-7511 {TRK-UP/DN}-KNOB [PMMA] SKYBLUE	1	
258	423-7511A00-CCR00	CD-7511 { BAND }-KNOB [RUBBER] CLEAR	1	
259	427-7511A00-2BE00	CD-7511 {POWER-SEL}-KNOB [PMMA] SKYBLUE	1	
260	428-9002A00-1NL00	CMP-9002 { VOL } -KNOB [ABS NATURAL]	1	
261	436-7511A00-2BE00	CD-7511 { MUTE }-KNOB [PMMA] SKYBLUE	1	
262	439-7511A00-10000	CD-7511 { RELEASE } -KNOB [ABS]	1	
263	445-7511A00-2BE00	CD-7511 { MODE } -KNOB [PMMA] SKYBLUE	1	
264	446-7511A00-2BE00	CD-7511 { AF-TA } -KNOB [PMMA] SKYBLUE	1	
265	446-7511B00-2BE00	CD-7511 { PTY } -KNOB [PMMA] SKYBLUE	1	
266	454-7511A00-2BE00	CD-7511 {ORNAMENT}-KNOB [PMMA] SKY BLUE	1	
267	460-7511A00-CCR00	CD-7511 {TRK-UP-DN}-KNOB BASE [RUBBER] CLEAR	1	
268	460-7511B00-CCR00	CD-7511 {AF-TA}-KNOB BASE [RUBBER] CLEAR SPY WHITE	1	
269	462-7500C00-9BK00	CD-7500 {LEFT} RELEASE-SHAFT-BASE [POM] BLACK	1	
270	462-7500D00-9BK00	CD-7500 {RIGHT}-RELEASE-SHAFT-BASE [POM] BLACK	1	

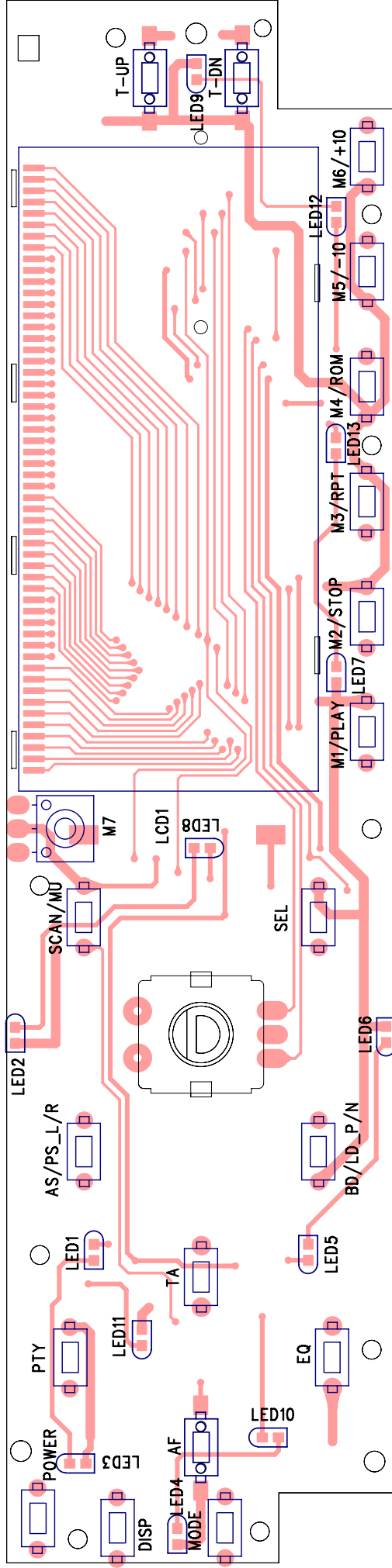
Item	Material Code	Brief Description	Qty	Remarks
271	483-7511A00-10000	CD-7511 ORNAMENT [ABS]	1	
272	483-7511B00-10000	CD-7511 {TRACK-UP-KNOB} --ORNAMENT [ABS]CHROME PLA	1	
	H03-7511D00-D50000-000	DVD-7511 FRONT W/TB1439B LCD(WE/BL ILL) REMO HISEM	1	
273	008-TB14391-TN0RB	LCD DISPLAY TB1439BMTTN FOR DVD-7511	1	LCD
274	025-TA02000-43130	TACT SW TA-02 2P 6.5X3.5 H=4.3MM 130G CD-7608BT	16	
275	025-TA02S00-43130	SMT TACT SW 2PIN 6X3.5 H=4.3mm 130g CD-7608BT	3	
276	036-H020000-18000	DETACHABLE CON 18P P=2.0mm PLUG	1	
277	038-6792400-65000	ZERBA CONNECTOR 67.9X2.4 H=6.5 PT=0.1 FOR CD-7607	1	
278	044-RMS0380-30000	IR RECIVER 3PIN MINI L-TYPE H=3.6 FOR CD7608/7609	1	
279	049-EN2412A-F1750	ENCODER VOL 24DET/12PULSE H=17.5MM PCB TYPE{NOBLE}	1	
280	218-7607A01-J0250	CD-7607 LCD BRACKET [IRON 0.4T]	1	
281	245-1198000-BBK00	1198 CONNECTOR COVER SHEET	1	
282	245-3300000-D0000	LED FILTER-"T-SHAPE" 20x12MM [0.1T/TRACING FILM]	2	
283	245-7607100-A0100	CD-7607 LCD-FILTER-{BIG} 72.2X29 [FILM 0.1T]	1	
284	246-7607A01-BK010	CD-7607 LCD BRACKET-PASTER-2 20X7.5X 0.1MM	1	
285	246-7607A01-WE010	CD-7607 LED REFLECTOR PLATE 29X5.7X0.1T	1	
286	246-7607A02-WE010	CD-7607 LCD RREFLECTOR [PET] 72.2X29X0.1T	1	
287	414-7511A00-2BE00	CD-7511 {CIRCLE}-REFLECTOR [PMMA SKYBLUE]	1	
288	414-7511B00-2BE00	CD-7511 {AF-TA-KNOB}-REFLECTOR [PMMA] SKYBLUE	1	BACK SIDE SILK SCREEN WHITE
289	414-7607500-2CR00	CD-7607 LCD-REFLECTOR [PMMA] CLEAR	1	
	S03-7511D00-D50000-000	DVD-7511 FRONT PCB (WHE/BLU ILL) REMOTE SMT ASSY	1	
290	001-7511D00-D5000	PCB DVD-7511 RDS FRONT BOARD [REV-0]	1	FRONT PCB
291	001-7607D00-A6000	PCB CD-7607 LED BOARD REV-0 [0.6T FR-4]	1	
292	002-0652300-H0000	IC PT6523LQ LCD DRIVER [LQFP64]	1	
293	011-C181D00-20000	CHIP RES [1206] 180 OHM 5% 1/4W	1	R27.
294	011-C221A00-20000	CHIP RES [1206] 220 OHM 5%	1	R25.
295	011-S000A00-20000	CHIP RES [0805] 0 OHM 5%	1	R23.
296	011-S101A00-20000	CHIP RES [0805] 100 OHM 5%	1	R30.
297	011-S102A00-20000	CHIP RES [0805] 1K OHM 5%	2	R26.9.

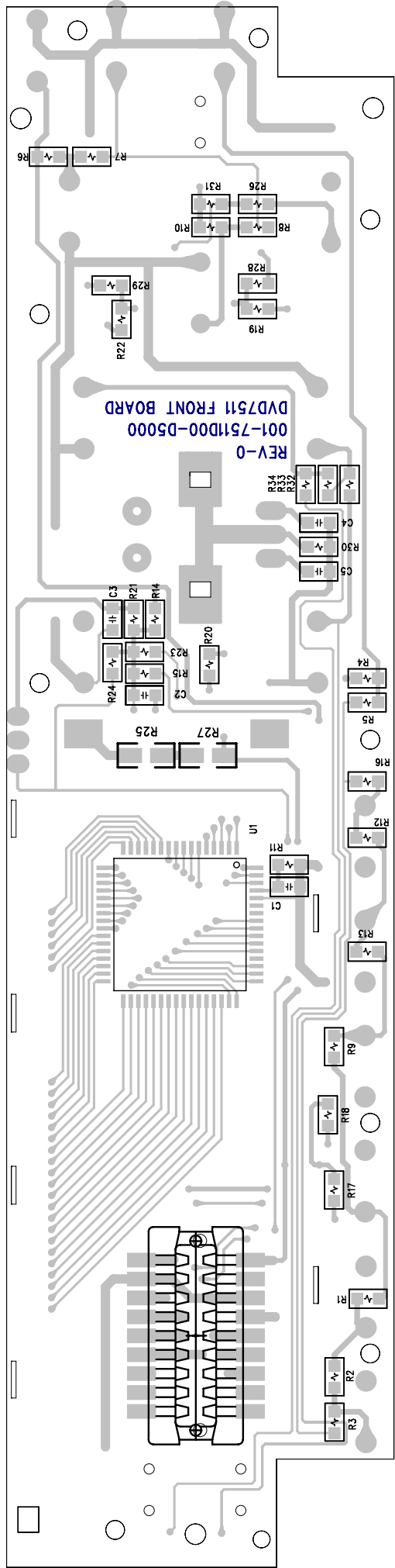
Item	Material Code	Brief Description	Qty	Remarks
298	011-S103A00-20000	CHIP RES [0805] 10K OHM 5%	1	R24.
299	011-S122A00-20000	CHIP RES [0805] 1.2K OHM 5%	1	R29.
300	011-S123A00-20000	CHIP RES [0805] 12K OHM 5%	1	R33.
301	011-S152A00-20000	CHIP RES [0805] 1.5K OHM @5%	1	R1.
302	011-S221A00-20000	CHIP RES [0805] 220 OHM @5%	1	R21.
303	011-S222A00-20000	CHIP RES [0805] 2.2K OHM 5%	1	R2
304	011-S332A00-20000	CHIP RES [0805] 3.3K OHM @5%	1	R3.
305	011-S333A00-20000	CHIP RES [0805] 33K OHM @5%	1	R34.
306	011-S391A00-20000	CHIP RES [0805] 390 OHM @5%	2	R4.6.
307	011-S471A00-20000	CHIP RES [0805] 470 OHM 5%	2	R5.7.
308	011-S513A00-20000	CHIP RES [0805] 51K OHM @5%	1	R11.
309	011-S561A00-20000	CHIP RES [0805] 560 OHM 5%	2	R16.8.
310	011-S562A00-20000	CHIP RES [0805] 5.6K OHM @5%	1	R32.
311	011-S681A00-20000	CHIP RES [0805] 680 OHM +/-5%	8	R19.10.22.28.20.17.18.12.
312	011-S821A00-20000	CHIP RES [0805] 820 OHM @5%	2	R13.31.
313	014-S104B00-80000	CHIP CAP [0805] 104P (0.1uF) 25V +80-20%	2	C2.3.
314	014-S331C00-50000	CHIP CAP [0805] 331P (330PF) 50V 10%	2	C5.4.
315	014-S681C00-50000	CHIP CAP [0805] 681P (680PF) 50V 10%	1	C1.
316	023-D000000-BE000	SMT LED [0603] BLUE (470nm) 50mcd 3.2V 20MA 130DEG	13	
317	023-F283500-WE200	SMT LED (2.8x3.5x1.9) WHITE 800-1000mcd 3.2V 20mA	2	
	P02-DVD7511-270158-00A	DVD-7511 MP3[CAMERON CA-555 DVD]-RU-64104T PACKING	1	
318	034-H020200-M15BK	RCA TO RCA VIDEO CORD SET L=1.5M BLACK W/YEL PLUG	1	
319	060-7511036-270158A	REMOTE DVD-7511 RDS MP3[CAMERON CA-555 DVD]	1	
320	061-CR20250-B0000	BUTTON LITHIUM BATTERY CR2025 3.0V	1	
321	212-5209000-14S00	SPRING WASHER ID=5.2x9.0x1.4T	2	
322	212-5210000-05P00	PLATE WASHER (φ5.2)	2	
323	217-1001E00-E1200	MOUNTING STRIP	1	
324	222-3896S00-E0600	CD-3896 SLEEVE-CASE [EGI-0.6]	1	
325	227-7803000-EA500	CD-7803 CASE CUSHION (BLACK W/ ADHESIVE TAPE)	1	

Item	Material Code	Brief Description	Qty	Remarks
326	230-100BK00-10000	PLASTIC TIE l=100mm	1	
327	233-N050W00-H0000	HEX NUT: M5	1	
328	234-PA05000-16000	SCREW TS 5.0 x 16.0 MM PA NICKLE TYPE-A TIP	1	
329	235-3896000-E1000	SET KEY	2	
330	301-0C02500-08000	POLY BAG OPEN 2.5"x8"XT0.04	1	
331	301-0C04000-09000	POLYBAG 4"x9"XT0.04	1	FOR VIDEO WIRE
332	301-0C06600-10500	POLY BAG 6-5/8" X 10-1/2" X 0.04MM THK [PE]	1	
333	301-0C11000-14000	POLY BAG 11"x14"XT0.04	1	
334	303-MR30000-PS060	POLYFOAM MR-300 264x79.5x57 FOR CAR AUDIO	2	
335	304-7511036-270158A	GIFT BOX DVD-7511 MP3 RDS MW FM[CAMERON CA-555 DVD	1	
336	305-7511036-270158A	I/M(EN/RU/PO/UK) DVD-7511 MW FM[CAMERON CA-555 DVD	1	
337	306-7511036-270158A	CARTON BOX 6PCS DVD-7511 MW FM[CAMERON CA-555 DVD]	0.17	
338	307-250X012-SCR002A	SCREW CARD 250X12 RED/WHE (EN) S.HOLE ROADSTAR	2	
339	308-7511036-270158A	TOP LABEL DVD-7511 MW FM[CAMERON CA-555 DVD]	1	
340	311-210X148-036000A	WARRANTY CARD 210X148 [CAMERON CA-535 FLASH]		
341	315-029X025-LSB001A	LASER BEAM LABEL 29X25 YEL/BLK [LASER SYMBOL]	1	
342	315-050X025-CAS003A	CLASS1 LABEL 50X25 YEL/BLK(6-LANG)	1	
343	315-050X030-CAU001A	LASER CAUTION LB 50x30 YEL/BLK(6-LANG)	1	
344	315-058X015-WRG017A	WIRING LABEL WHE/BLK [CD IN (L)]	1	
345	315-058X015-WRG018A	WIRING LABEL RED/BLK [CD IN (R)]	1	
346	315-058X015-WRG019A	WIRING LABEL WHE/BLK [LINE OUT(L)]	1	
347	315-058X015-WRG020A	WIRING LABEL RED/BLK [LINE OUT(R)]	1	
348	315-058X015-WRG025A	WIRING LABEL YEL/BLK [VIDEO OUT]	1	
349	315-134X030-WAR001A	WARRANTY LABEL 134X30 GOLD W/BLK (5-LANG)	1	
350	402-7803S00-4BK00	CD-7803 NOSE PIECE CASE [PP]	1	
351	441-7507A00-1BK00	CD-7507 TRIM-COVER [ABS] BLACK	1	
*** [End of Report] ***				

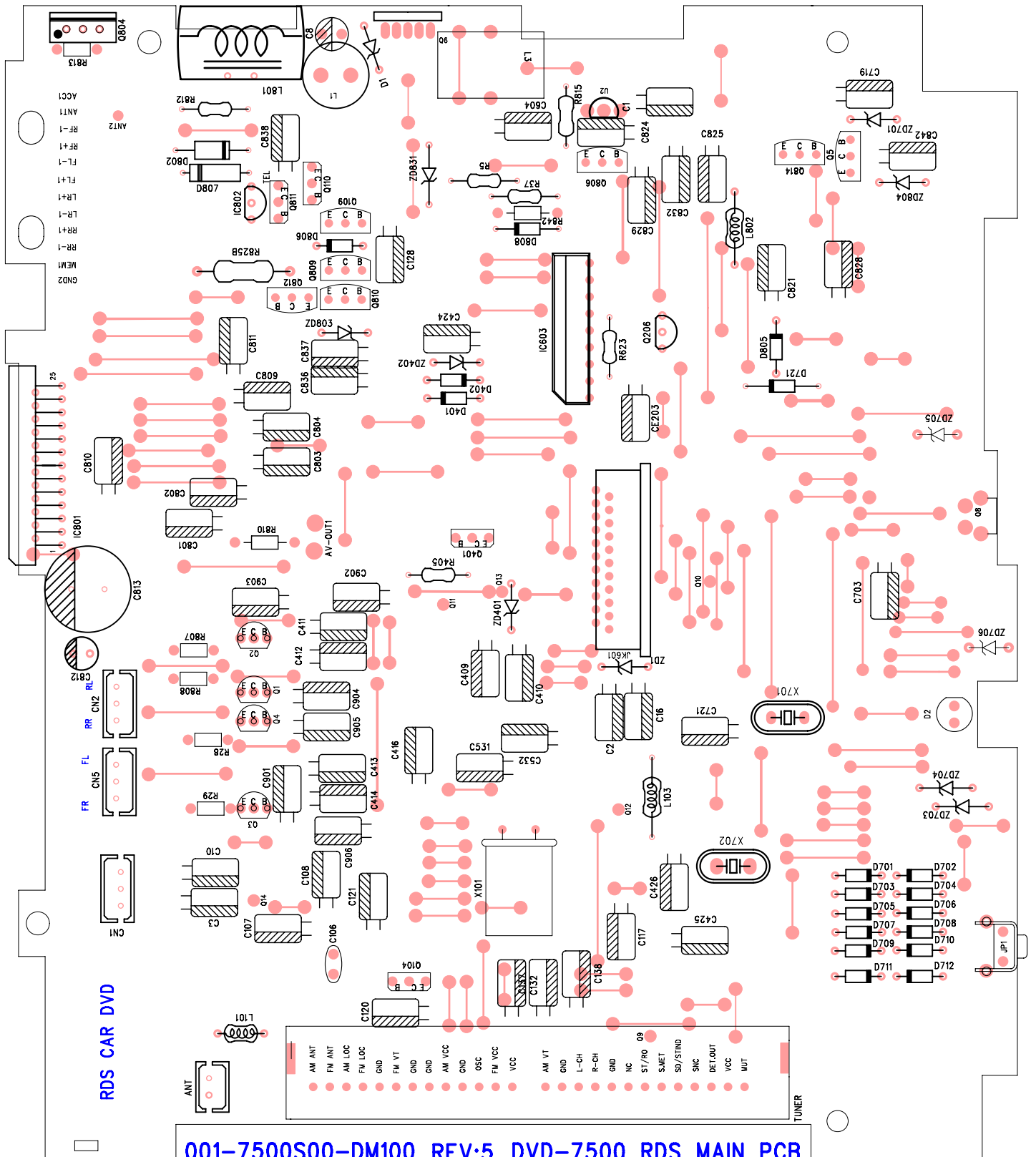
001-7511D00-D5000 REV-0

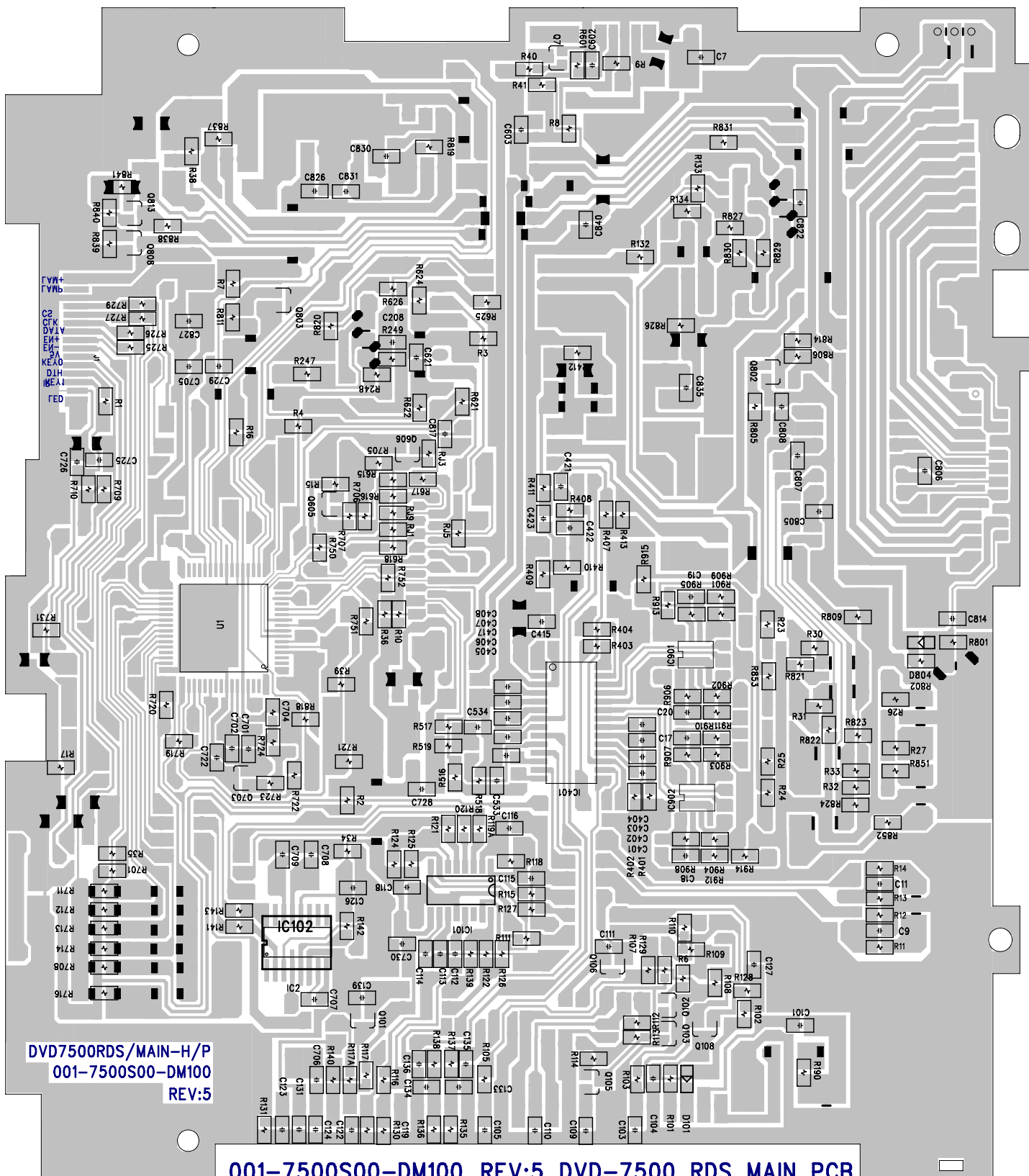
DVD-7511 FRONT PCB TOP LAYER





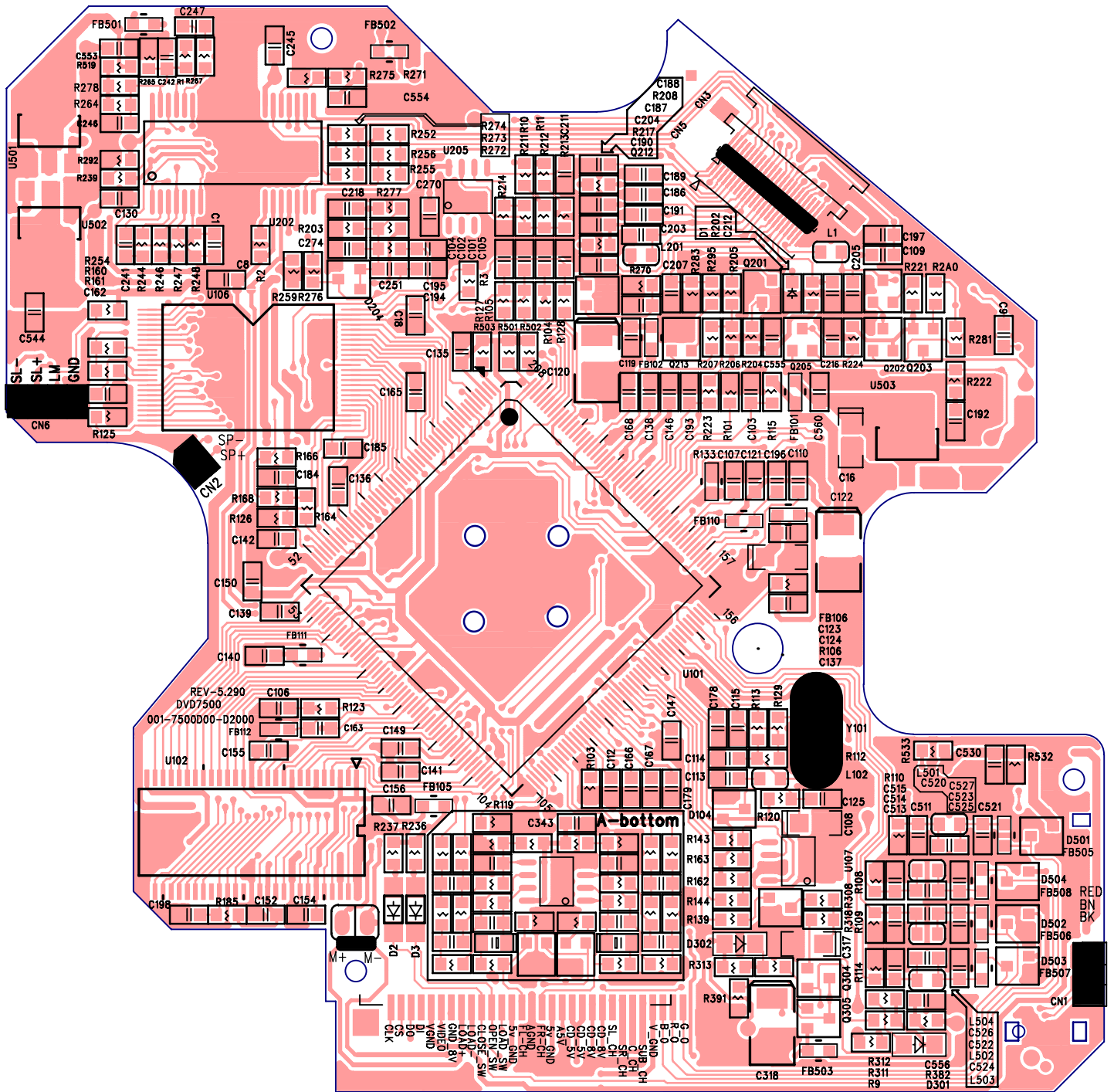
001-7511D00-D5000 REV-0
DVD-7511 FRONT PCB BOTTOM LAYER



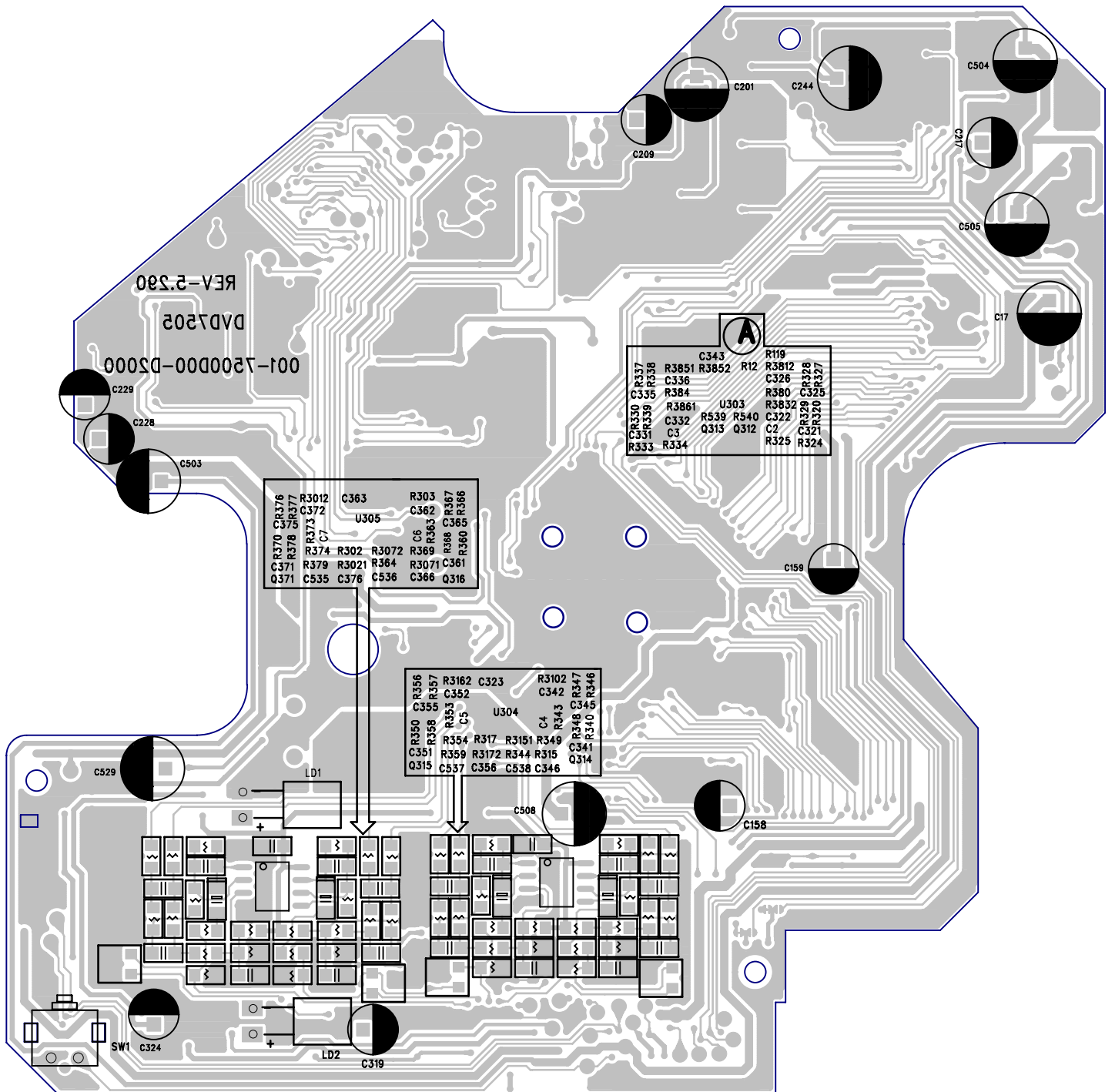


DVD7500RDS/MAIN-H/P
 001-7500S00-DM100
 REV:5

001-7500S00-DM100 REV:5 DVD-7500 RDS MAIN PCB
 BOTTOM LAYER

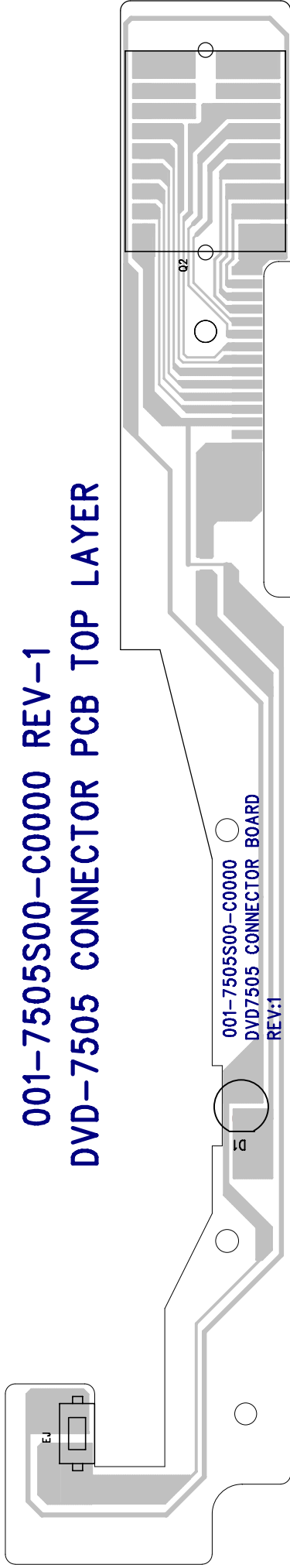


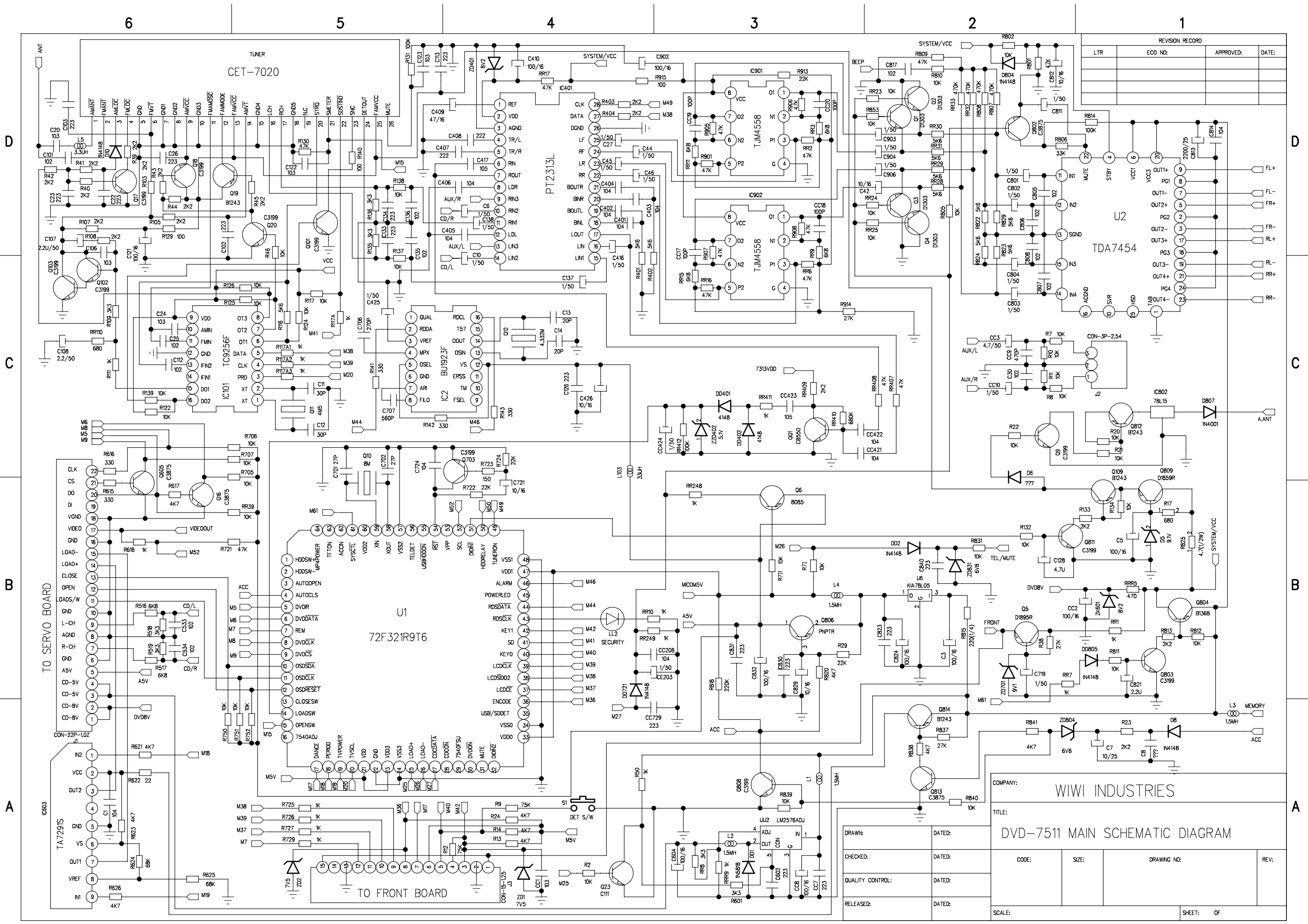
001-7500D00-D2000 REV-5.290
DVD-7505 SERVO PCB TOP LAYER



001-7500D00-D2000 REV-5.290
DVD-7505 SERVO PCB BOTTOM LAYER

001-7505S00-C0000 REV-1
DVD-7505 CONNECTOR PCB TOP LAYER





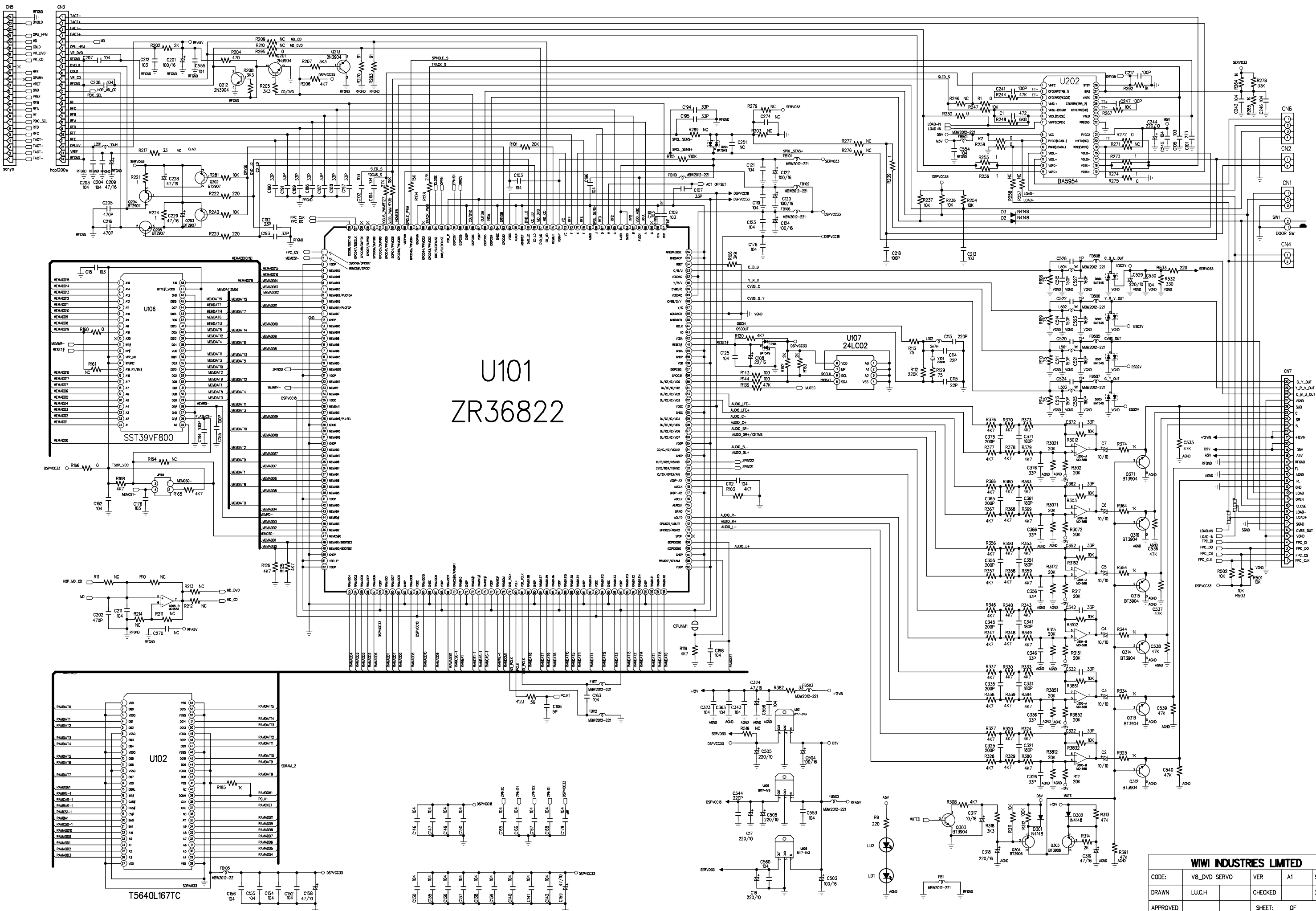
REVISION RECORD			
LTR	ECO NO:	APPROVED:	DATE:

COMPANY: WIWI INDUSTRIES

TITLE: DVD-7511 MAIN SCHEMATIC DIAGRAM

DRAWN:	DATED:
CHECKED:	DATED:
QUALITY CONTROL:	DATED:
RELEASED:	DATED:

CODE:	SIZE:	DRAWING NO:	REV:
SCALE:	SHEET: OF		



U101
ZR36822

WWI INDUSTRIES LIMITED				
CODE:	V8_DVD SERVO	VER	A1	SIZE: A0
DRAWN	LUC.H	CHECKED		20051217
APPROVED		SHEET:	OF	
SCALE				