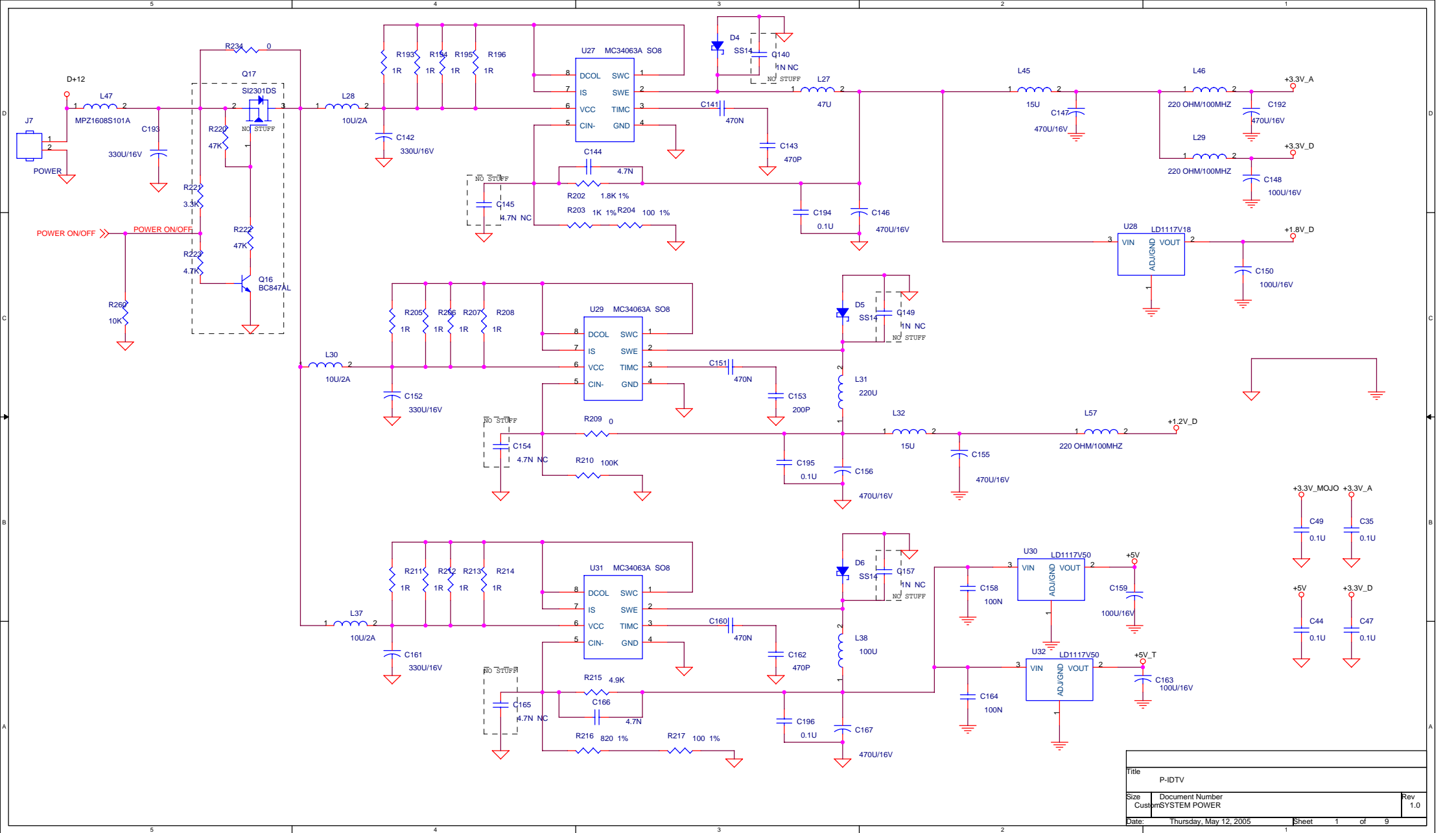
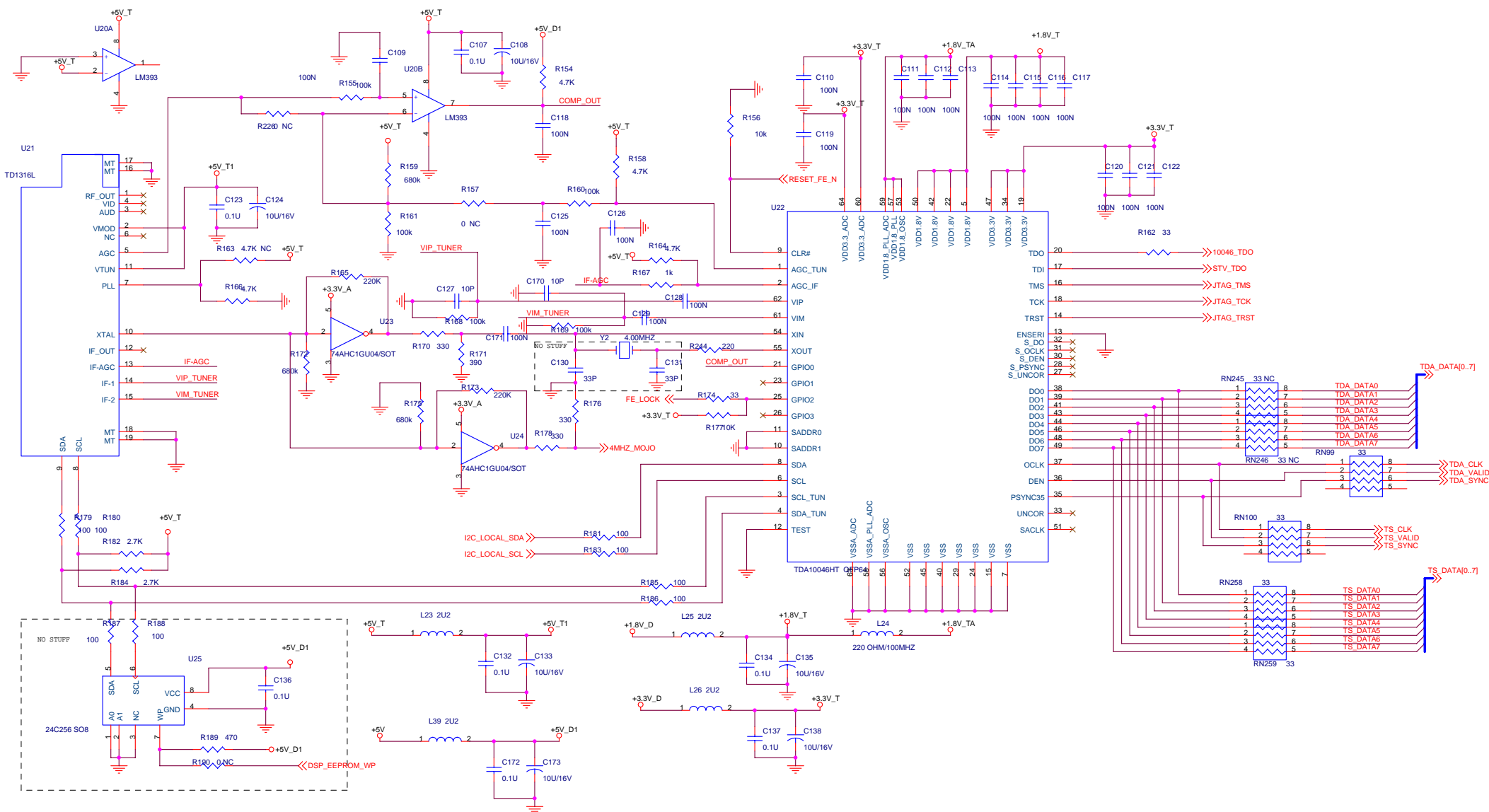


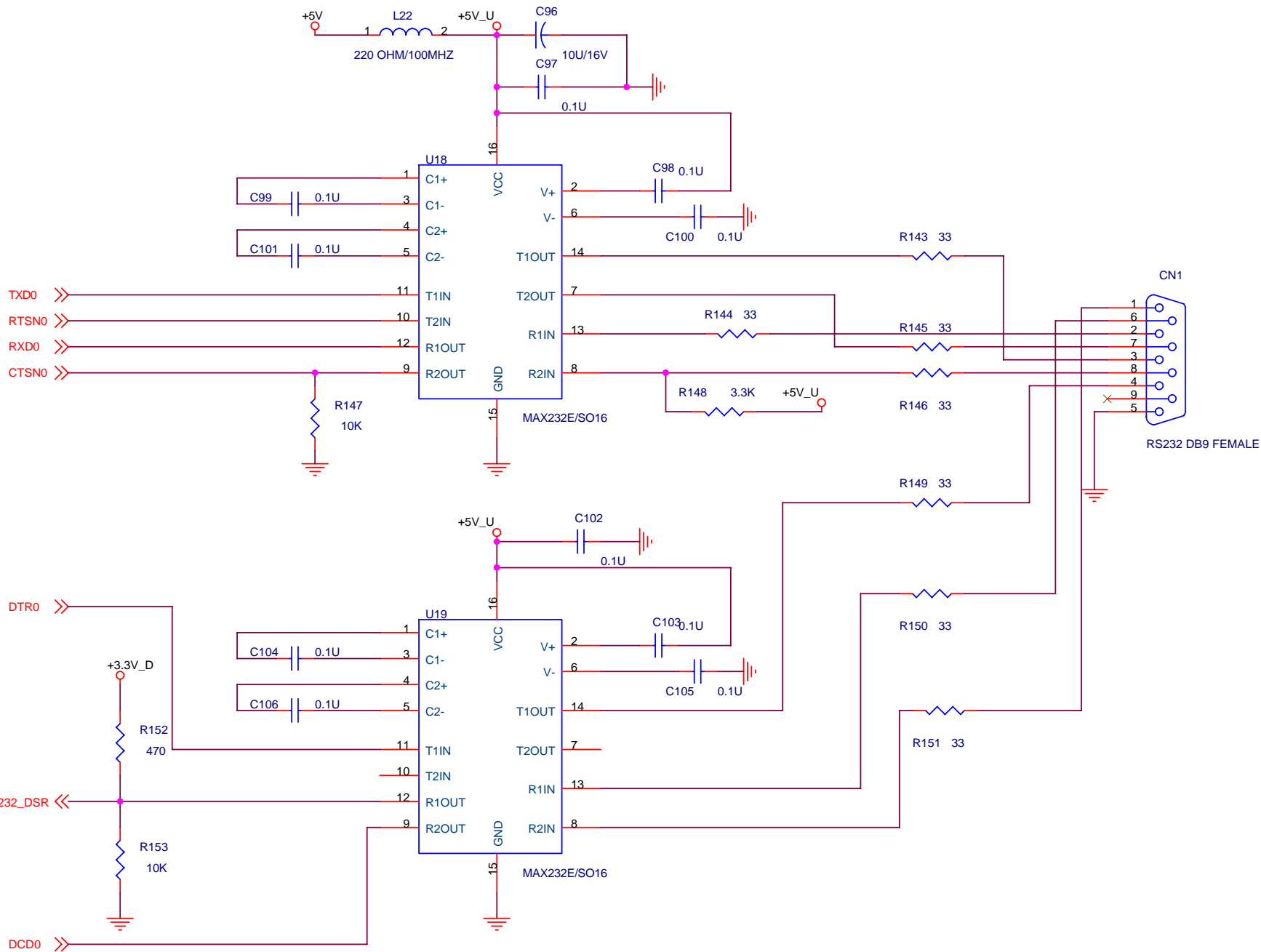
CRT NO	C408	C410	C411	C413	C414	L400	T402	T401
44-32RFLS-LG1A W76QEP257X53	2700P 1.6KV	7200P 1.6KV	0.022U 400V	4300P 1.6KV	0.22U 400V	50UH	37-FDA002-FBA1A BSC29-0185X	36-HDR031-XX0 BCT-1213
44-29RFLS-OR3A A68QDL082X012(B)	3300P 1.6KV	8200P 1.6KV	0.022U 400V	4300P 1.6KV	0.33U 400V	21UH	37-F05013-5410X JF0501-3541	36-HDR029-XX1 BCT-1012B
W76QEL592X018	2700P	7200p	0.015u	7600p	0.33u	21uH	37-FDA002-FBA1A BSC29-0185X	36-HDR031-XX0 BCT-1213



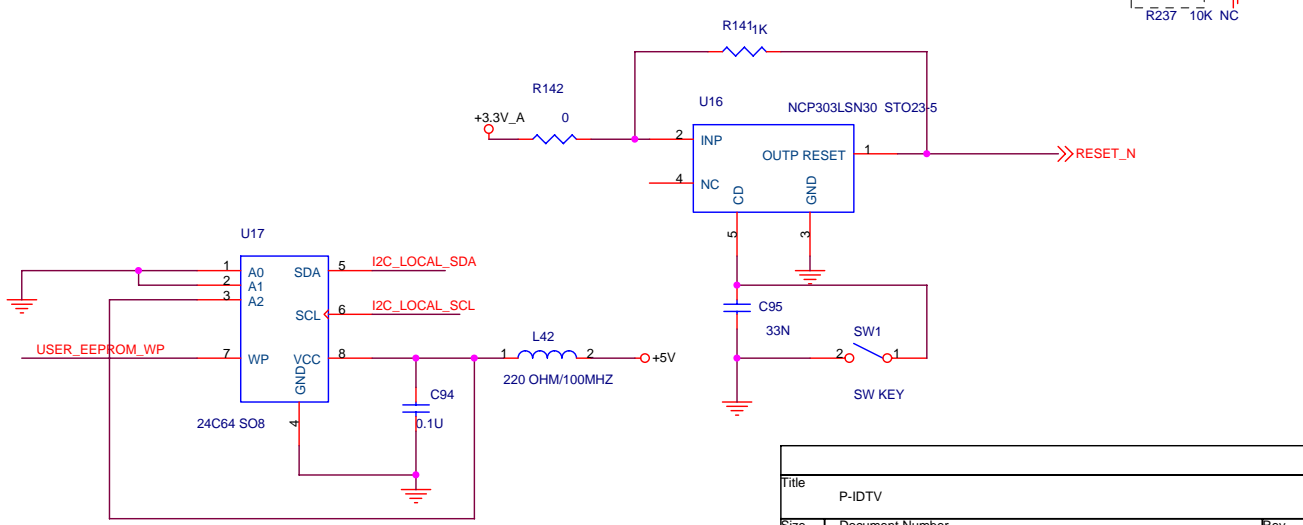
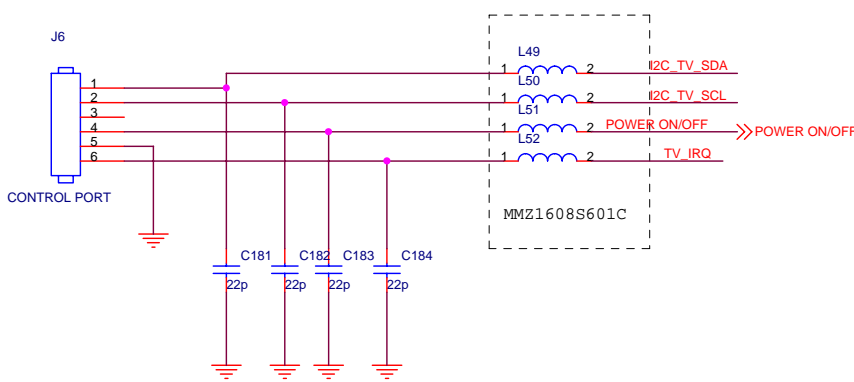
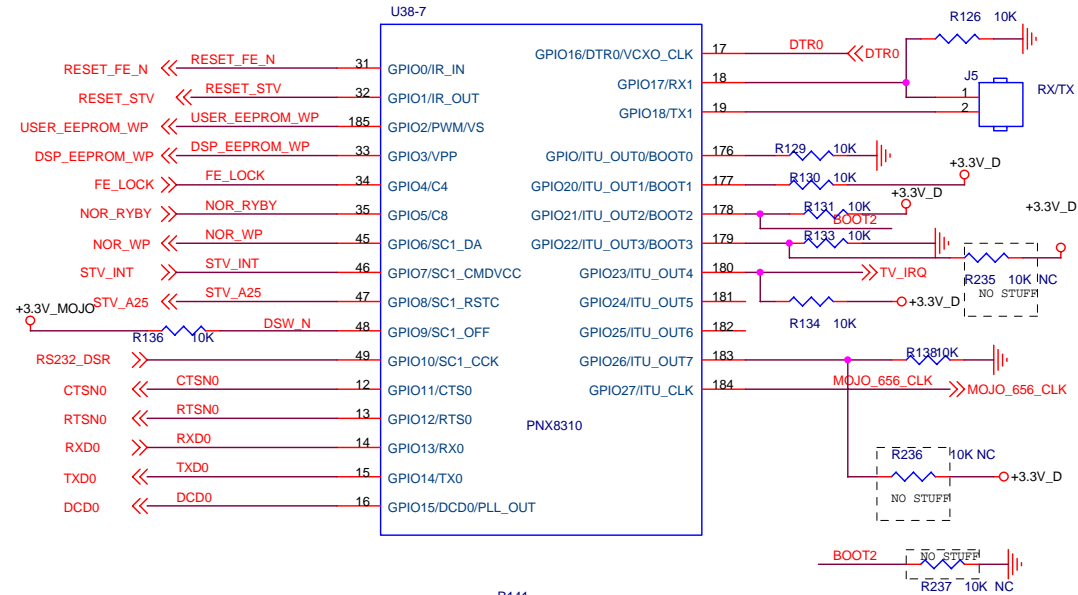
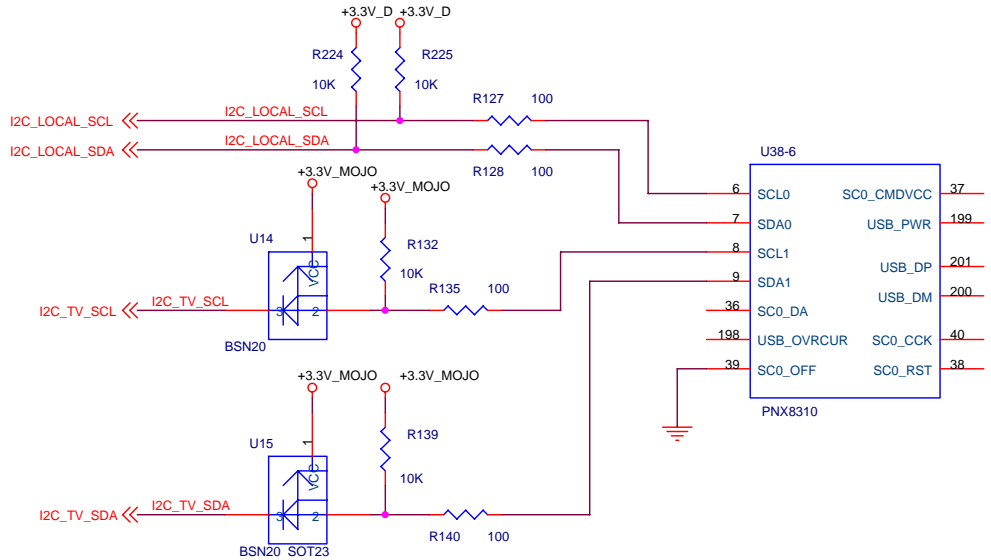
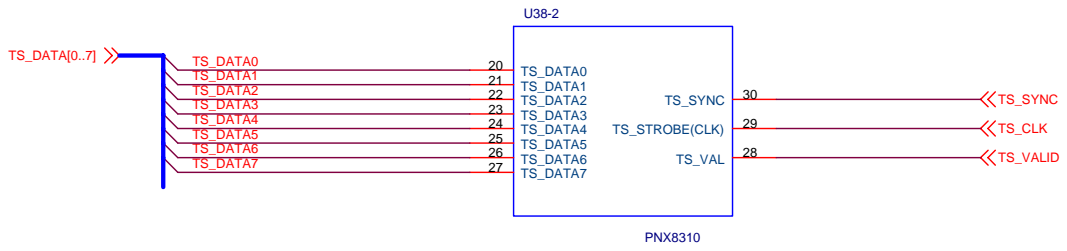
Title		
P-IDTV		
Size	Document Number	Rev
Custom	SYSTEM POWER	1.0
Date:	Thursday, May 12, 2005	Sheet 1 of 9



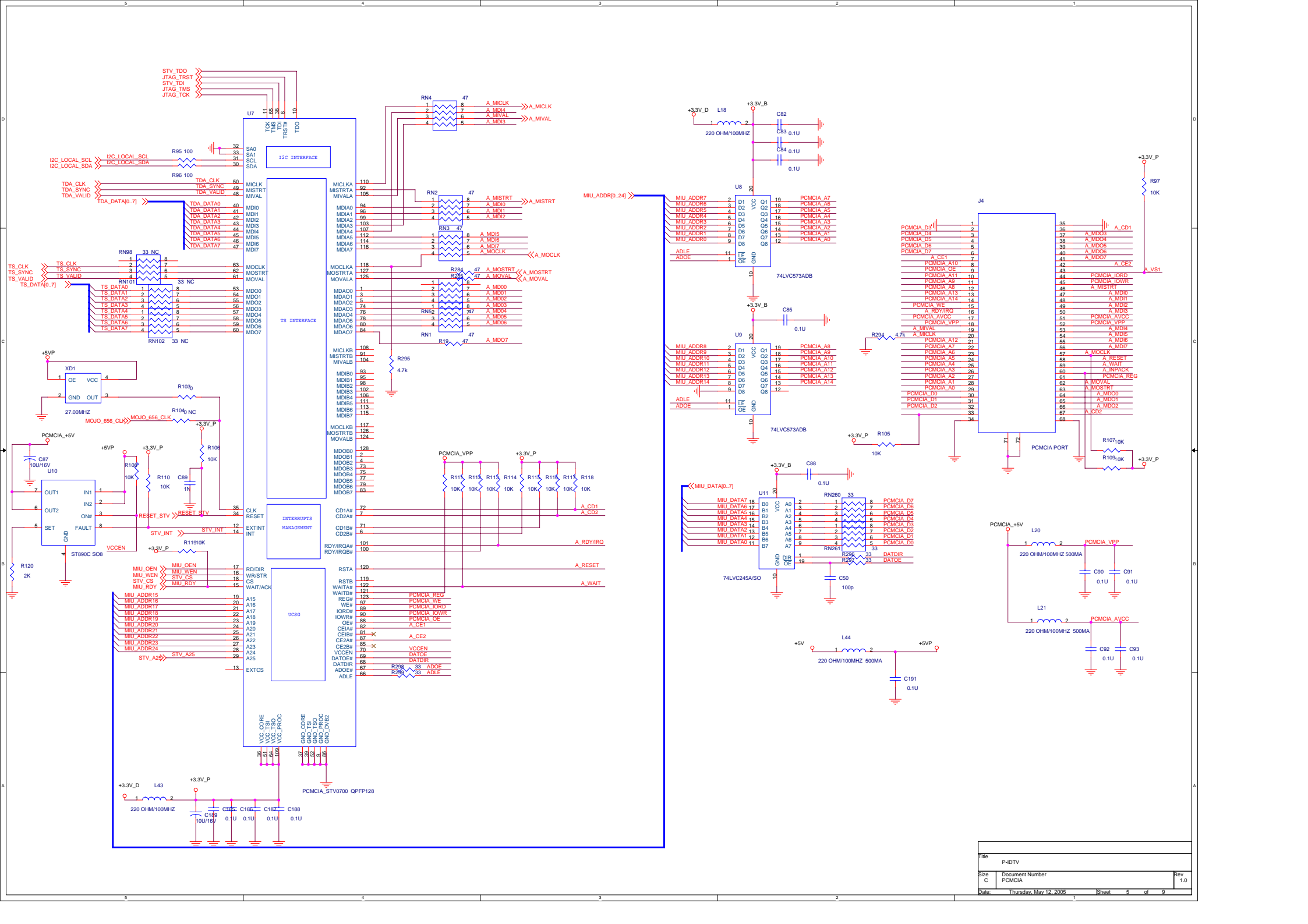
File		P-IDTV
Size	Document Number	Rev
	CustomTUNER	1.0
Date:	Thursday, May 12, 2005	Sheet 2 of 9



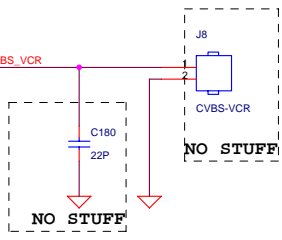
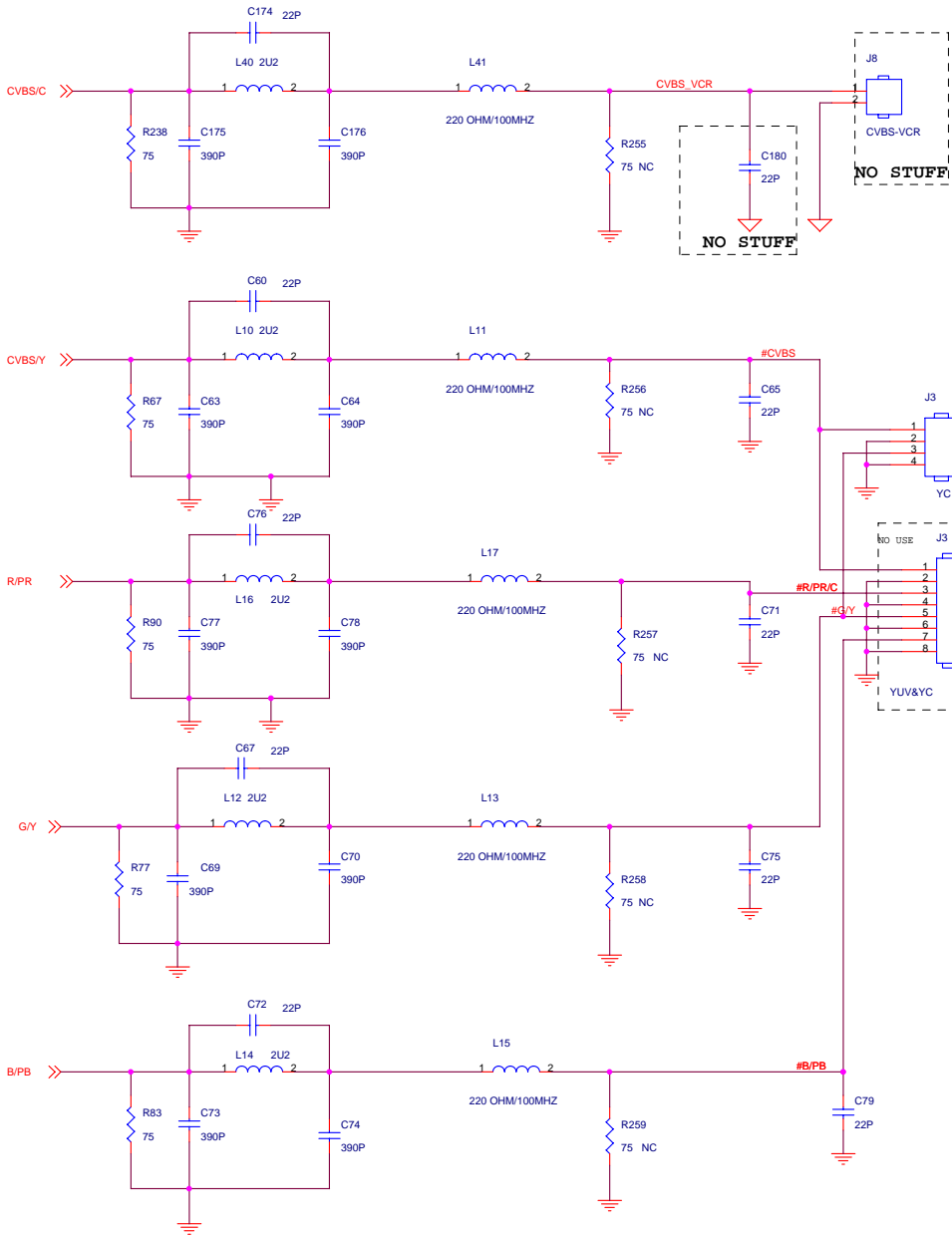
Title		
P-IDTV		
Size	Document Number	Rev
Custom	RS232	1.0
Date:	Thursday, May 12, 2005	Sheet 3 of 9



Title			P-IDTV
Size	Document Number	Rev	
B	TS&I2C&GPIO	1.0	
Date:	Thursday, May 12, 2005	Sheet	4 of 9



File	P-IDTV	
Size	Document Number	Rev
C	PCMCIA	1.0
Date	Thursday, May 12, 2005	Sheet 5 of 8



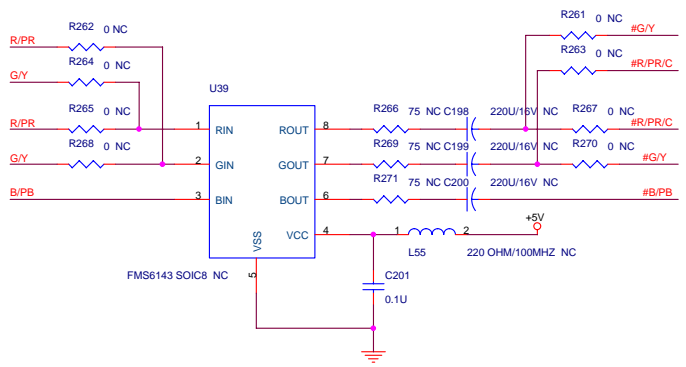
NO STUFF

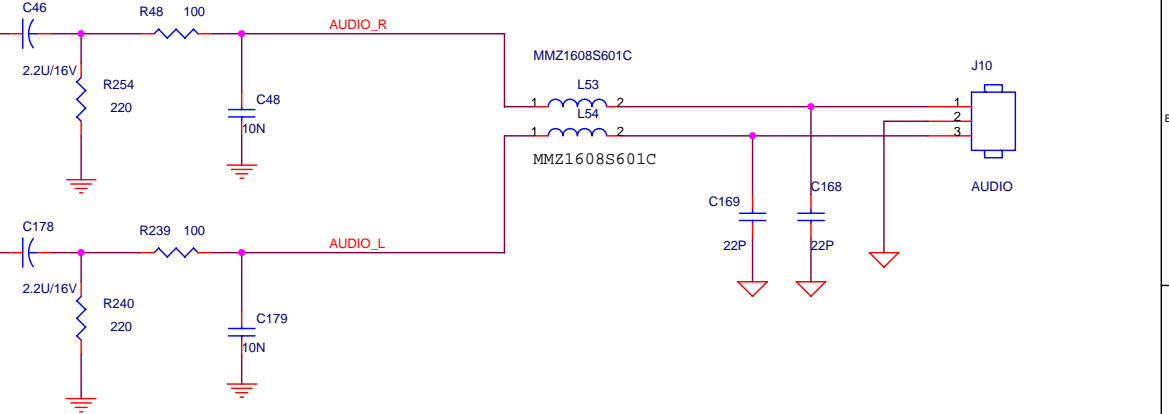
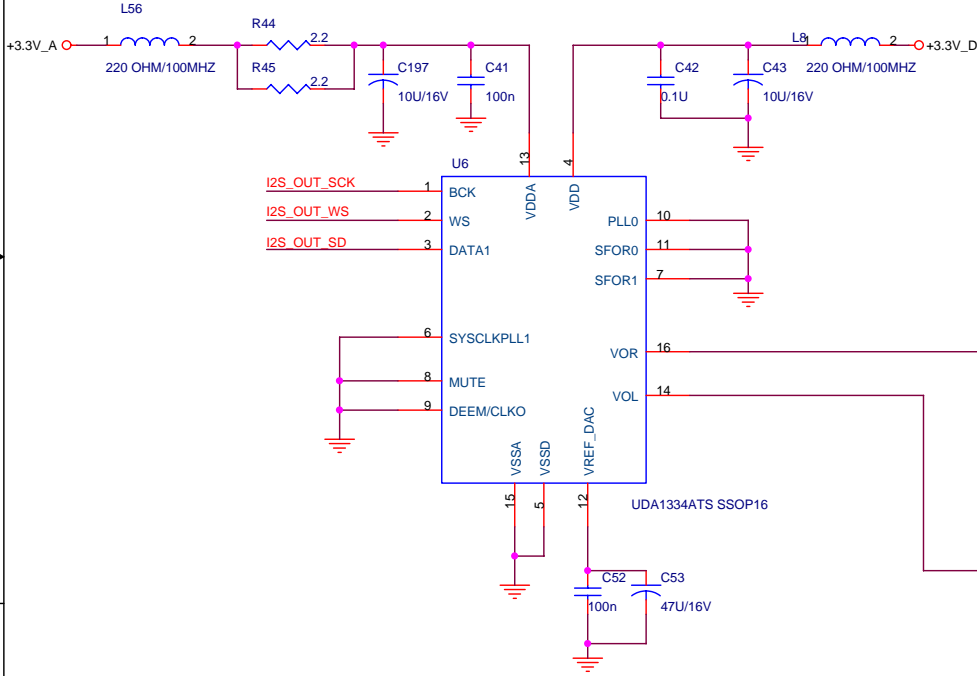
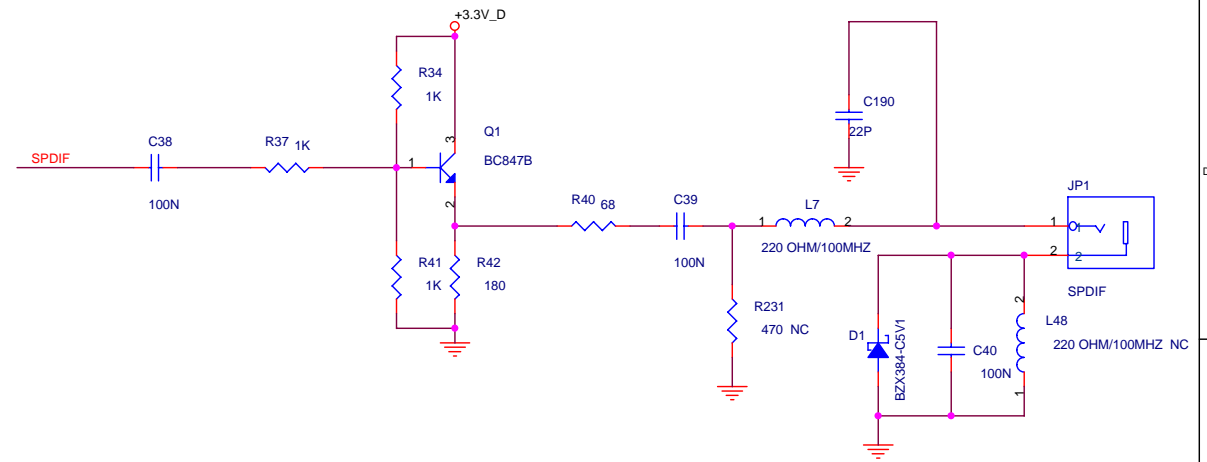
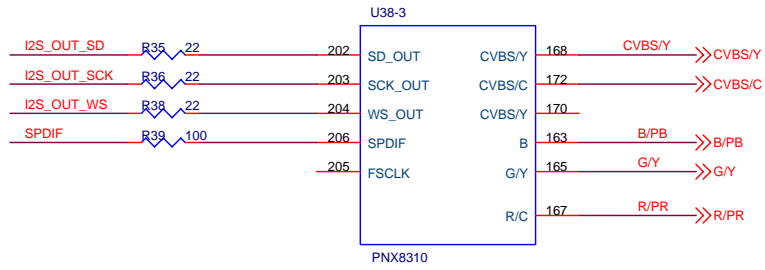
NO STUFF

OPT.

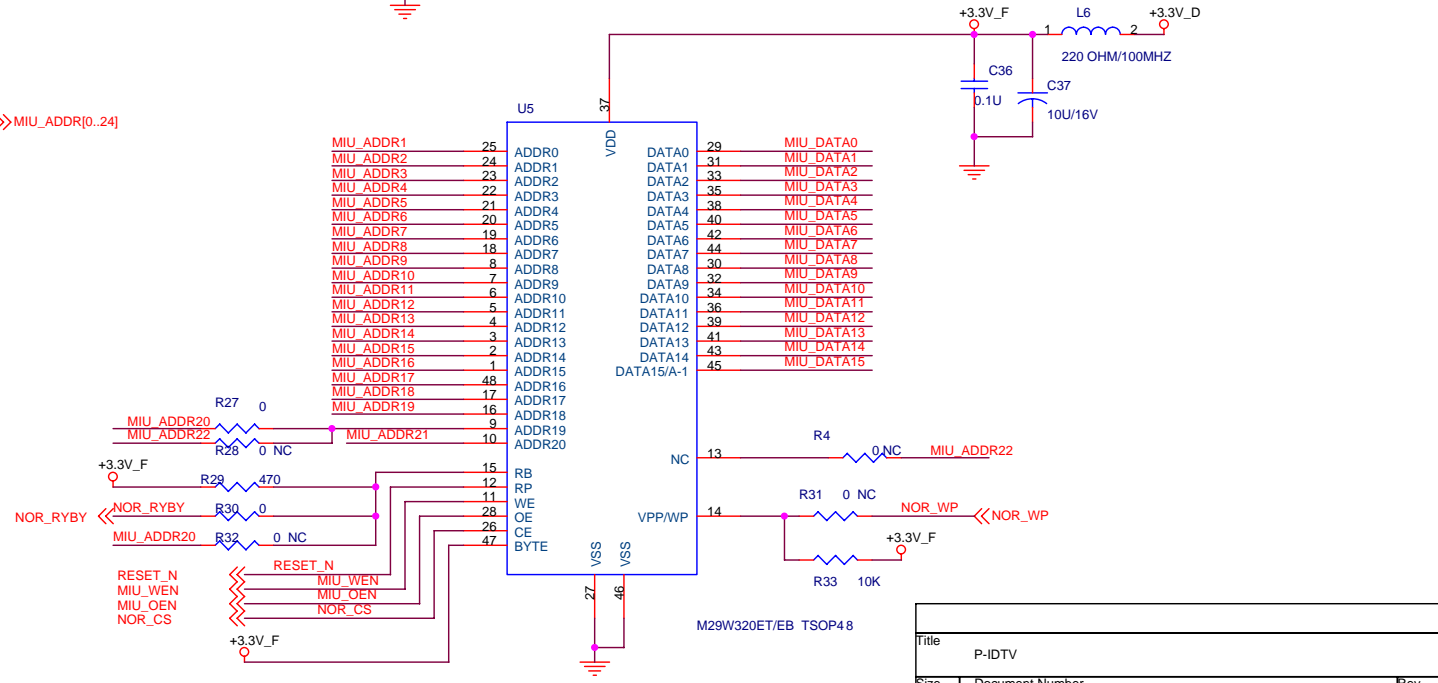
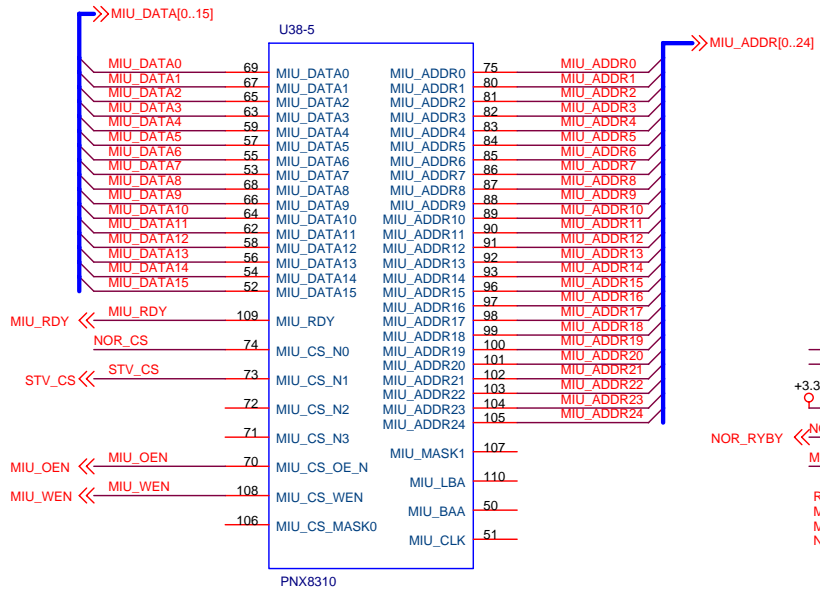
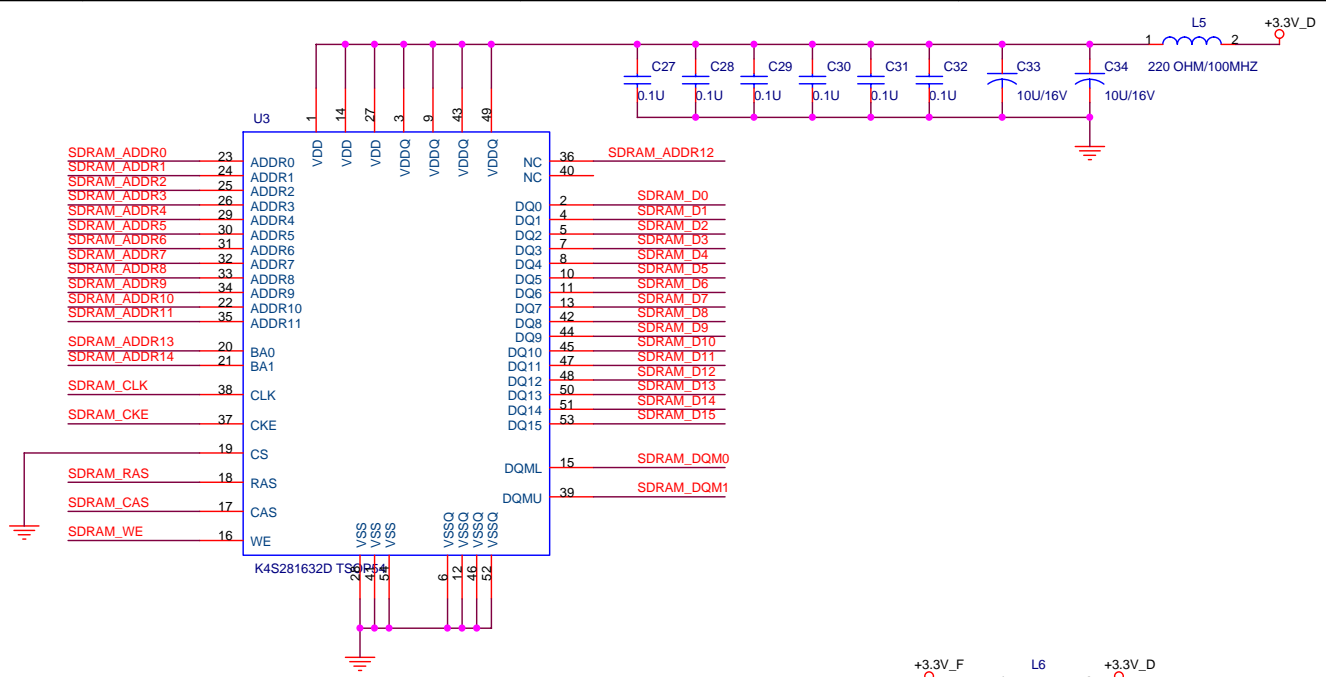
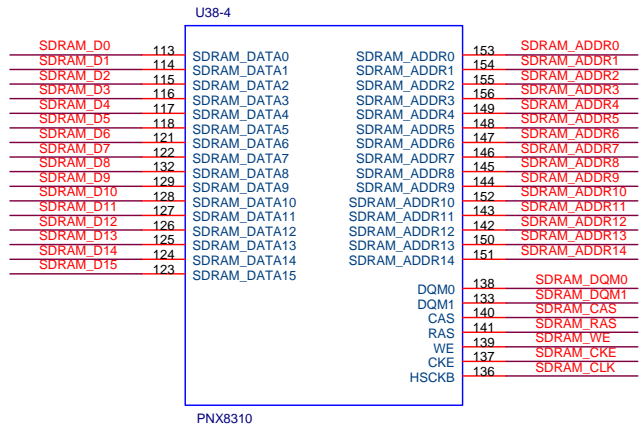
NOTE:

- YC:
 - STUFF:R262, R264,R261, R263
 - NO STUFF:R265, R268,R267, R270
- YUV:
 - STUFF:R265, R268,R267, R270
 - NO STUFF:R262, R264,R261, R263





Title		
P-IDTV		
Size	Document Number	Rev
B	AUDIO	1.0
Date:	Thursday, May 12, 2005	Sheet 7 of 9



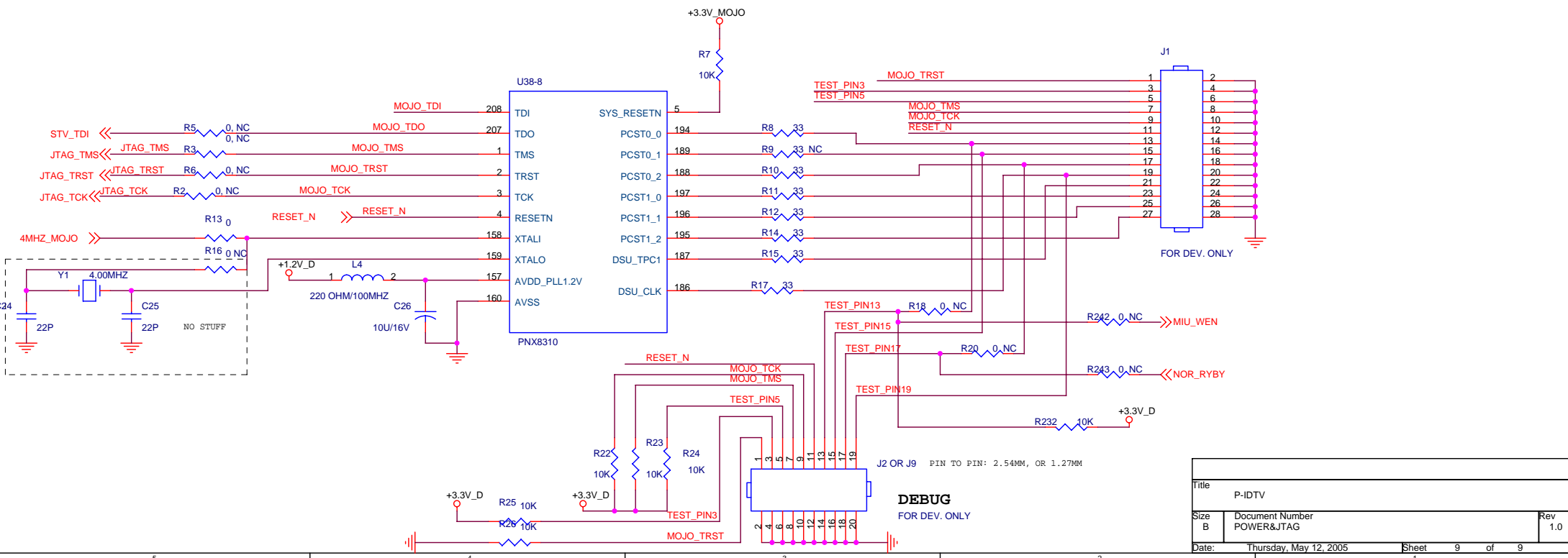
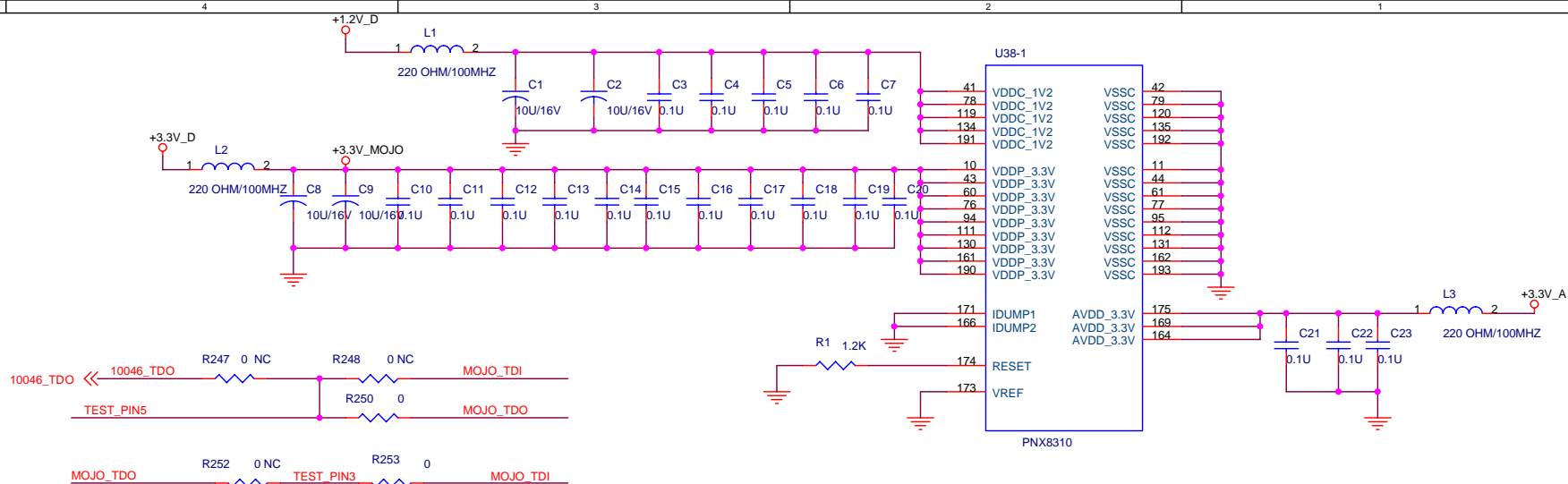
Title		
P-IDTV		
Size	Document Number	Rev
B	FLASH&SDRAM	1.0
Date:	Thursday, May 12, 2005	Sheet 8 of 9

SCH:

01-P8IDTV-D0D

PCB:

40-P8IDTV-D0D 4X



Title		
P-IDTV		
Size	Document Number	Rev
B	POWER&JTAG	1.0
Date:	Thursday, May 12, 2005	Sheet 9 of 9