

# Service Manual

## AUTOMOTIVE AFTERMARKET



**WMA MP3**

### CQ-DP383W CQ-DP383WJ

Removable Front Panel MP3 CD Player  
/ Receiver with Changer Control



### Specification\*

#### General

Power Supply	DC 12V (11V - 16V), Test Voltage 14.4V Negative Ground
Tone Controls	Bass ; $\pm 12\text{dB}$ at 100Hz Treble ; $\pm 12\text{dB}$ at 10kHz
Current Consumption	Less than 2.2A (CD play mode, 0.5W $\times$ 4ch)
Maximum Power Output	50W $\times$ 4ch (at 1kHz, Vol. Max.)
Suitable Speaker Impedance	4-8 $\Omega$
Pre-Amp Output Voltage	2V (CD play mode; 1kHz, 0dB)
Output Impedance	200 $\Omega$
FM Stereo Radio	
Frequency Range	87.5 - 108MHz
Usable Sensitivity	11.0dBf (1.25 $\mu\text{V}$ , 75 $\Omega$ )

Frequency Range	530 - 1,710kHz
Usable Sensitivity	28dB/ $\mu\text{V}$ (25 $\mu\text{V}$ , S/N 20dB)

#### CD Player

Sampling Frequency	32 times oversampling
Pick-Up Type	Astigma 3-beam
Light Source	Semiconductor Laser
Wavelength	780nm
Frequency Response	20Hz to 20,000Hz ( $\pm 1\text{dB}$ )
Signal to Noise Ratio	96dB

Dimensions**	178 $\times$ 50 $\times$ 150mm
Weight**	1.4kg

\* Specifications and the design are subject to possible modification without notice due to improvements.

\*\* Dimensions and Weight shown are approximate.

#### AM Radio

### WARNING

This service information is designed for experienced repair technicians only and is not designed for use by the general public. It does not contain warnings or cautions to advise non-technical individuals of potential dangers in attempting to service a product. Products powered by electricity should be serviced or repaired only by experienced professional technicians. Any attempt to service or repair the product or products dealt with in this service information by anyone else could result in serious injury or death.

### IMPORTANT SAFETY NOTICE

There are special components used in this equipment which are important for safety. These parts are marked by in the Schematic Diagrams, Circuit Board Diagrams, Exploded Views and Replacement Parts List. It is essential that these critical parts should be replaced with manufacturer's specified parts to prevent shock, fire or other hazards. Do not modify the original design without permission of manufacturer.

# Panasonic®

© 2003 Matsushita Electric Industrial Co., Ltd. All rights reserved. Unauthorized copying and distribution is a violation of law.

# CONTENTS

## Page

## Page

1 FEATURES .....	2
2 LASER PRODUCTS .....	2
3 REPLACING THE FUSE .....	2
4 MAINTENANCE .....	2
5 NOTES .....	2
6 DIMENSIONS .....	2
7 WIRING CONNECTION .....	3
8 BLOCK DIAGRAM .....	4

9 WIRING DIAGRAM .....	6
10 SCHEMATIC DIAGRAM .....	11
11 TERMINALS DESCRIPTION .....	15
12 PACKAGE AND IC BLOCK DIAGRAM .....	18
13 REPLACEMENT PARTS LIST .....	24
14 EXPLODED VIEW (Unit) .....	29
15 CD PLAYER PARTS LIST .....	30
16 EXPLODED VIEW (CD Deck) .....	33

## 1 FEATURES

- PLL (Phase Locked Loop) synthesized tuning.
- 18-FM, 6-AM presets with preset scan
- Digital servo for reliable CD playback.
- Removable face plate.

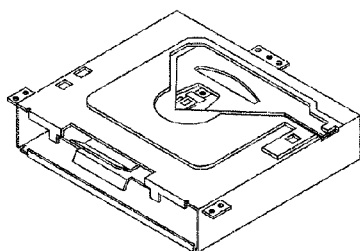
## 2 LASER PRODUCTS

### CAUTION:

This product utilizes a laser diode with the unit turned "on", laser radiation is emitted from the pickup lens.

Laser radiation from the pickup lens is safety level, but be sure the followings:

1. Do not disassemble the optical pickup unit, since radiation from exposed laser diode is dangerous.
2. Do not adjust the variable resistor on the pickup unit. It was already adjusted.
3. Do not look at the focus lens using optical instruments.
4. Recommend not to look at pickup lens for a long time.



Deck Ass'y (Upper Side)

### Caution

This Product utilizes a laser.  
Use of controls or adjustments or performance of procedures other than those specified herein may result in hazardous radiation exposure.

## 3 REPLACING THE FUSE

Use fuses of the same specified rating (15A). Using different substitutes or fuses with higher ratings, or connecting the product directly without a fuse, could cause fire or damage to the stereo unit.

## 4 MAINTENANCE

Your products is designed and manufactured to ensure a minimum of maintenance. Use a dry, a soft cloth for routine exterior cleaning. Never use benzine, thinner or other solvents.

## 5 NOTES

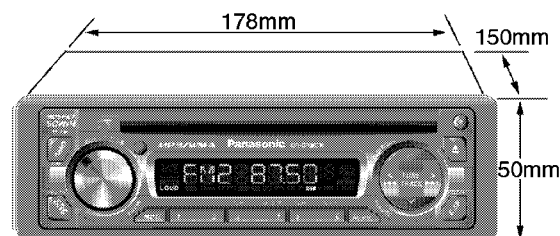
### [RADIO BLOCK]

Do not align the AM/FM package block. When the package block is necessary, it will be supplied already aligned at the factory.

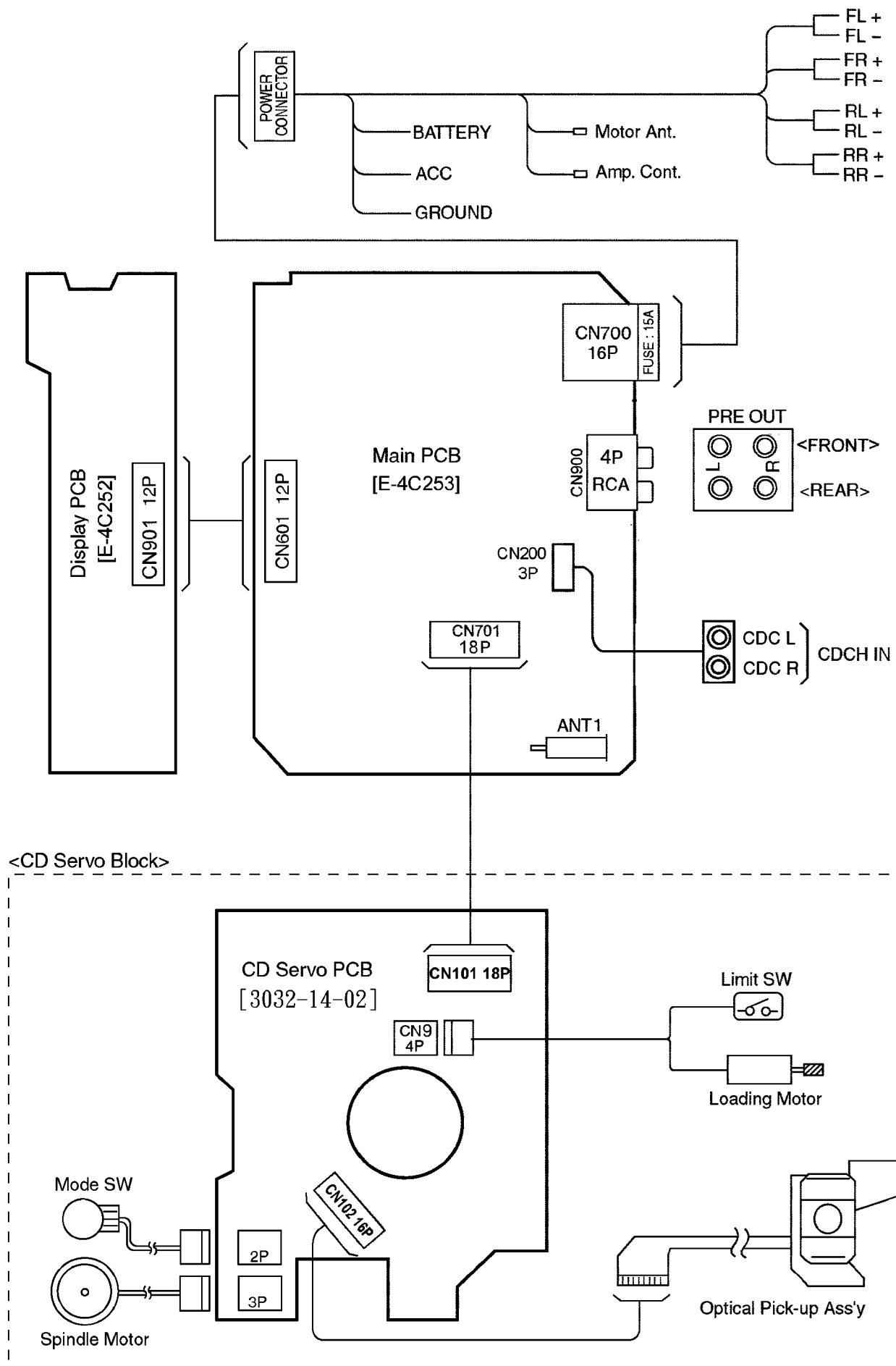
### [CD DECK BLOCK]

This model has no servo alignment points because microcomputer controls the servo circuit.

## 6 DIMENSIONS

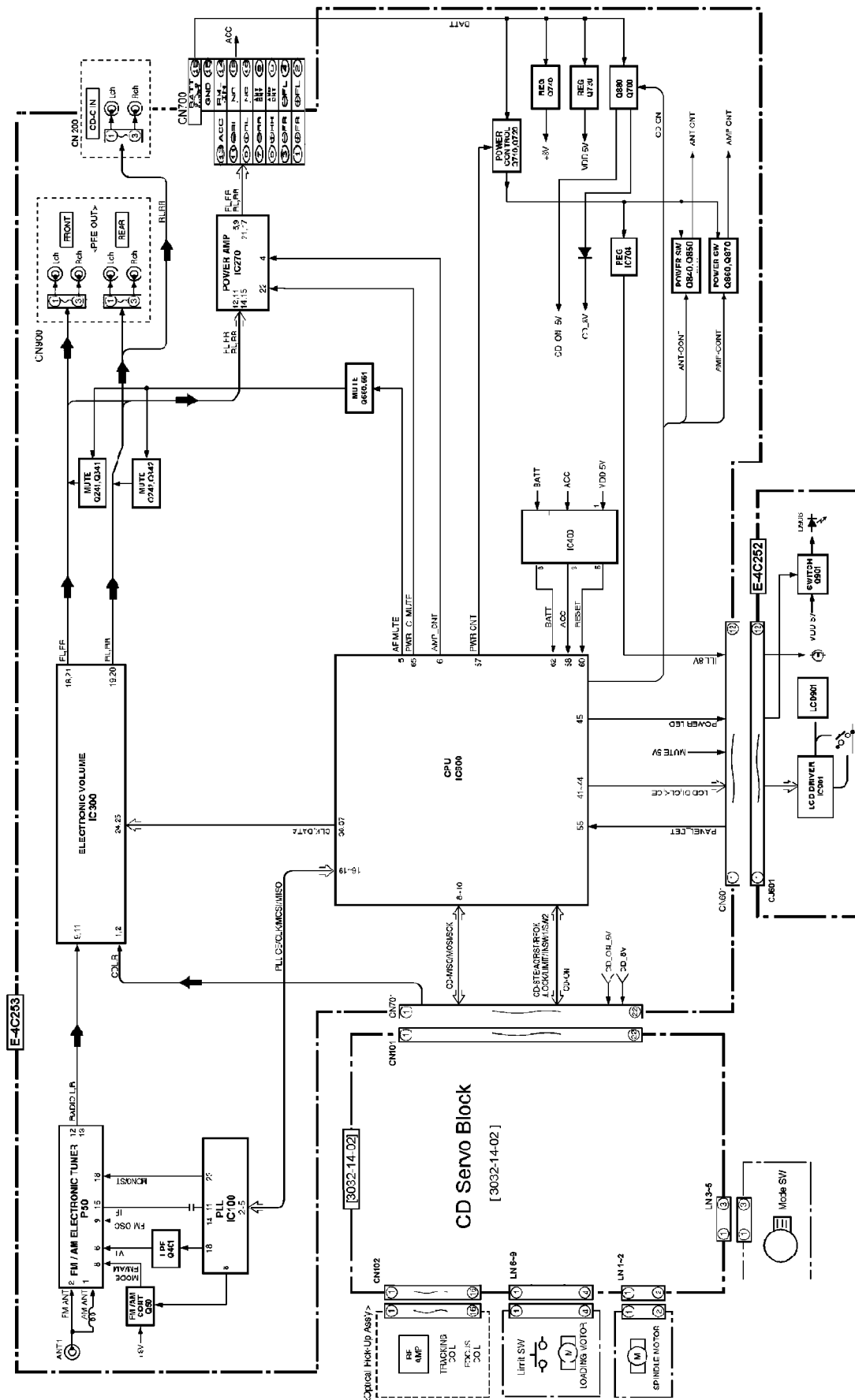


## 7 WIRING CONNECTION

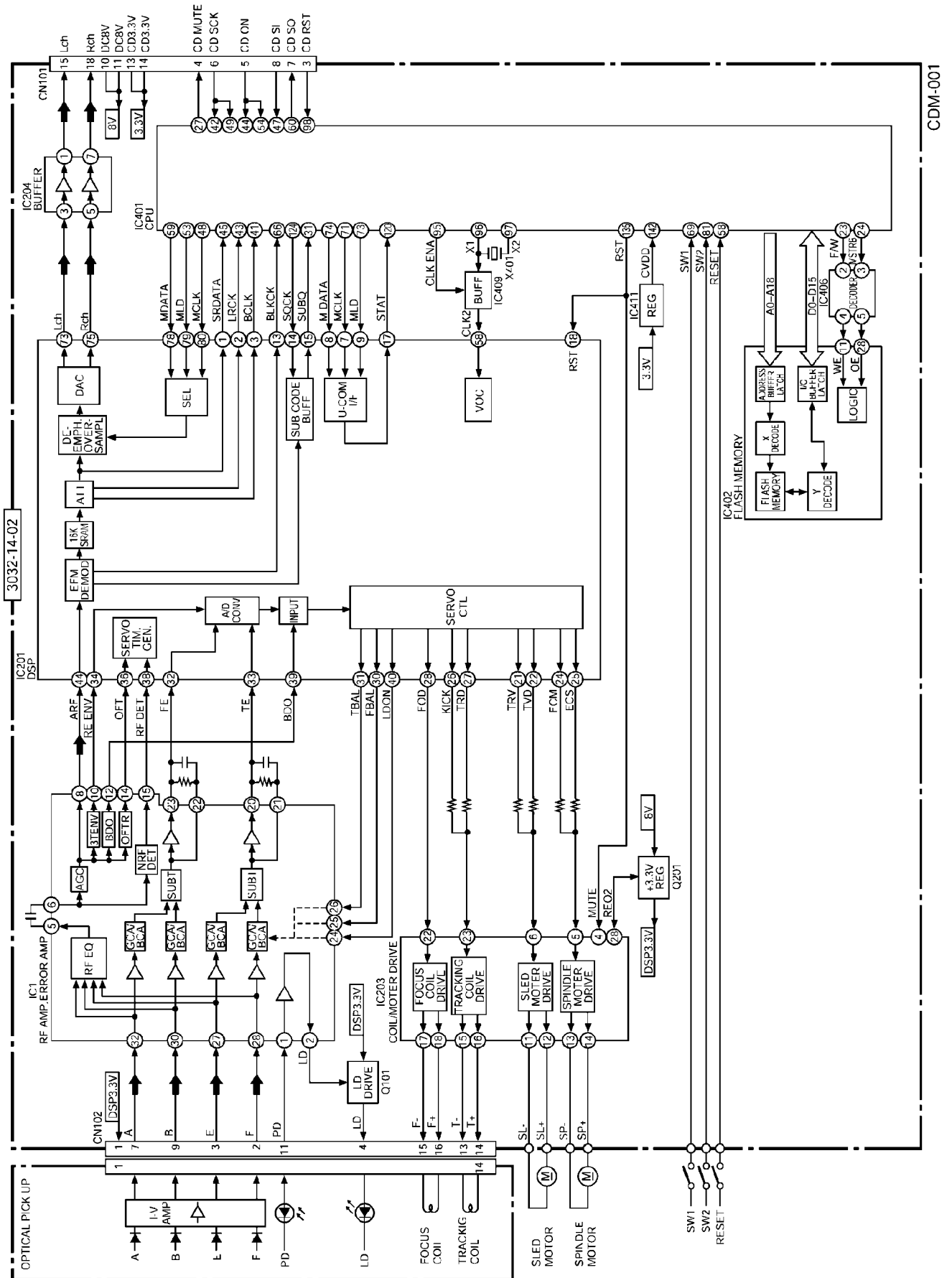


# 8 BLOCK DIAGRAM

## 8.1. Main / Key Block

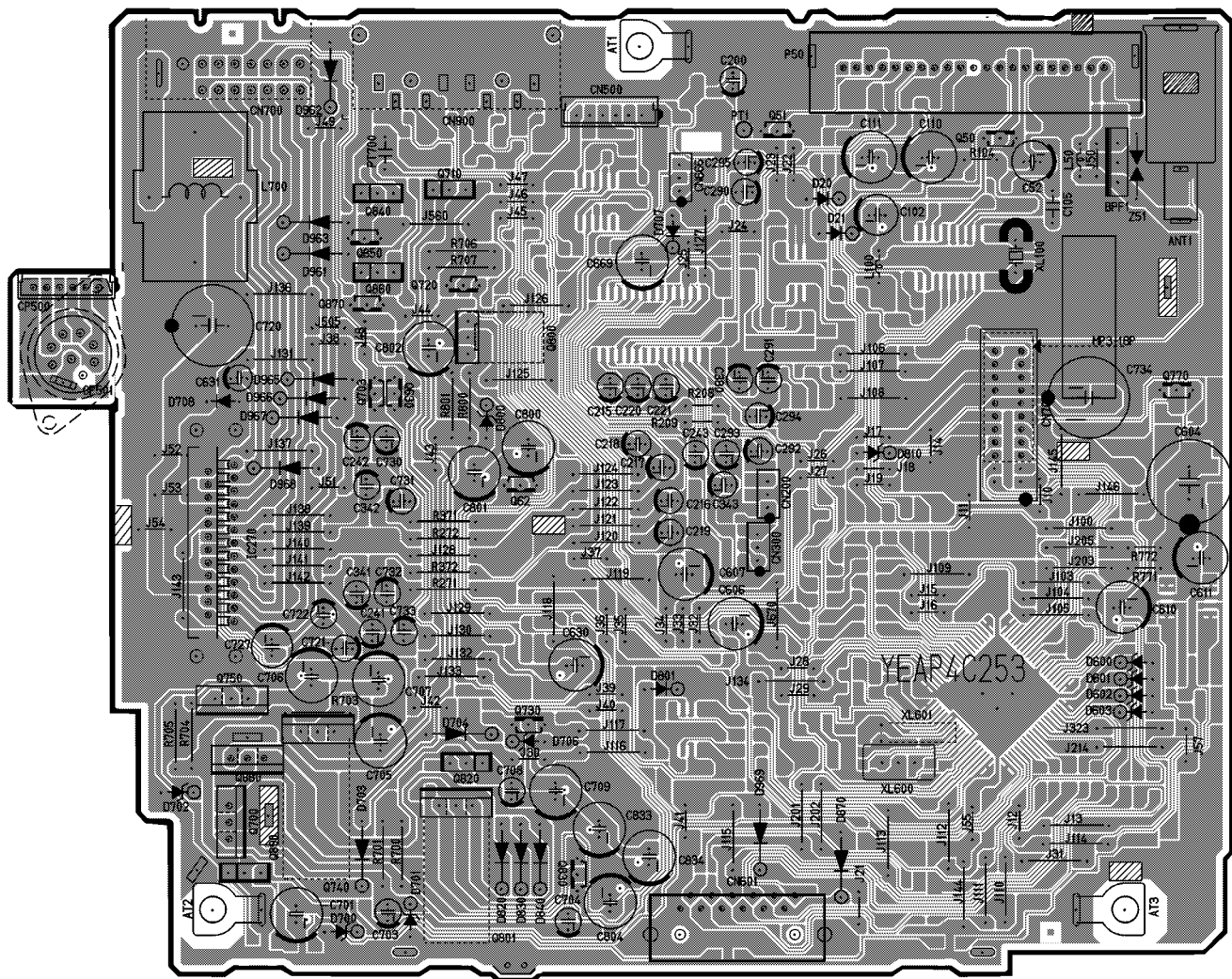


## 8.2. CD Servo Block



## 9 WIRING DIAGRAM

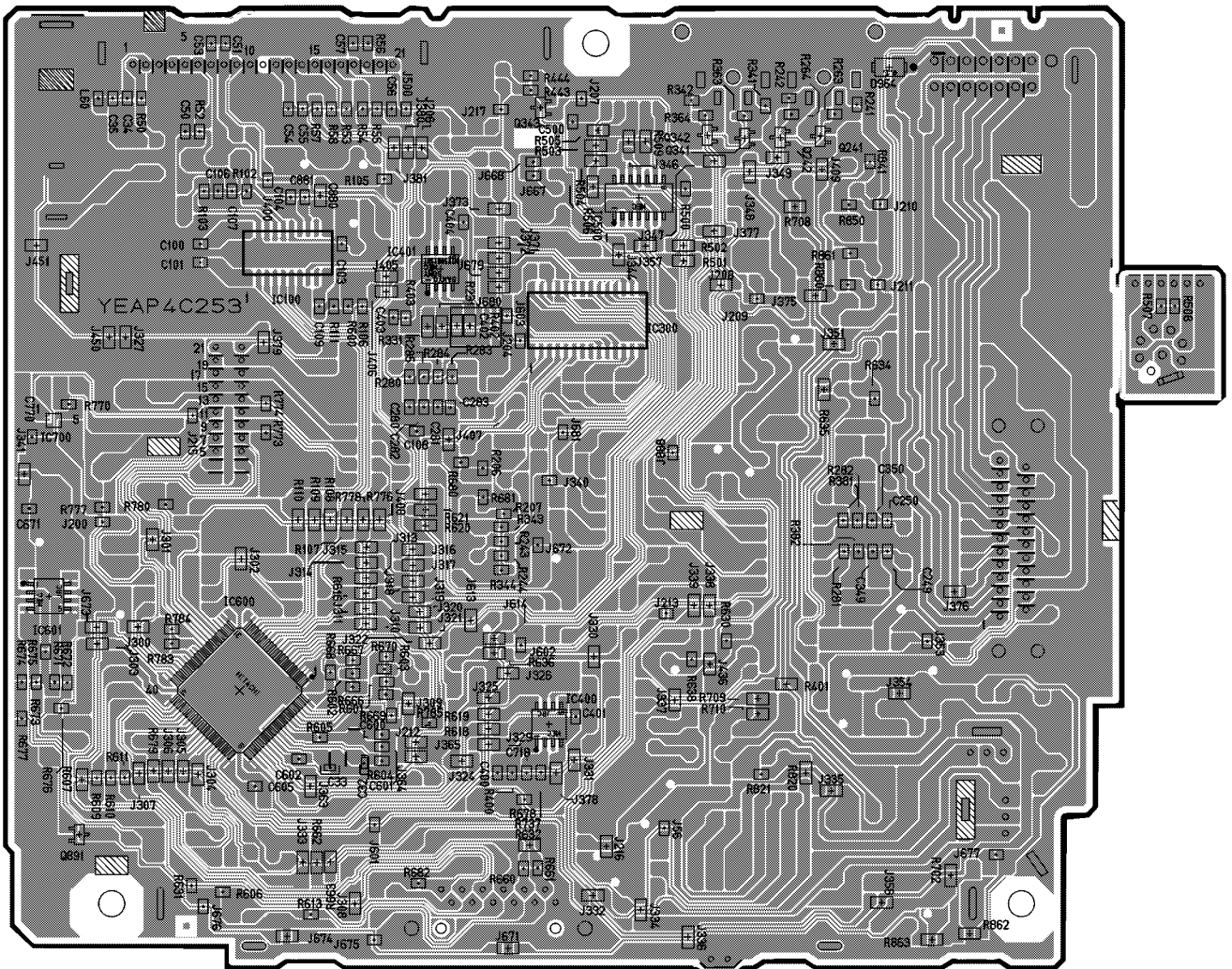
### 9.1. Main Block-1



[E-4C253] [TOP VIEW]

CQ-DP383(U.W.WJ) Main PCB

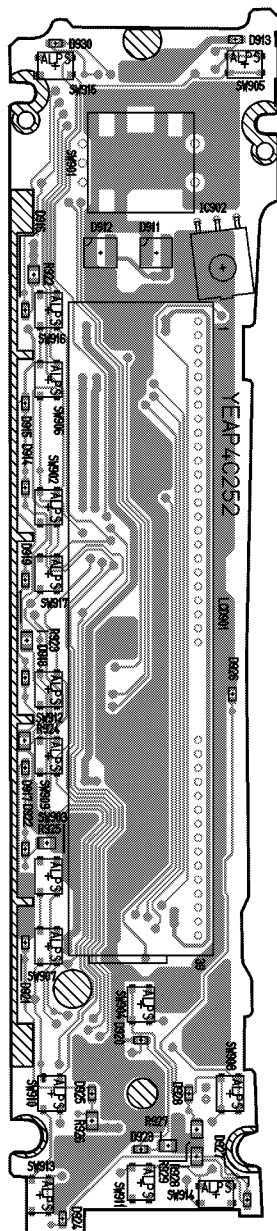
## 9.2. Main Block-2



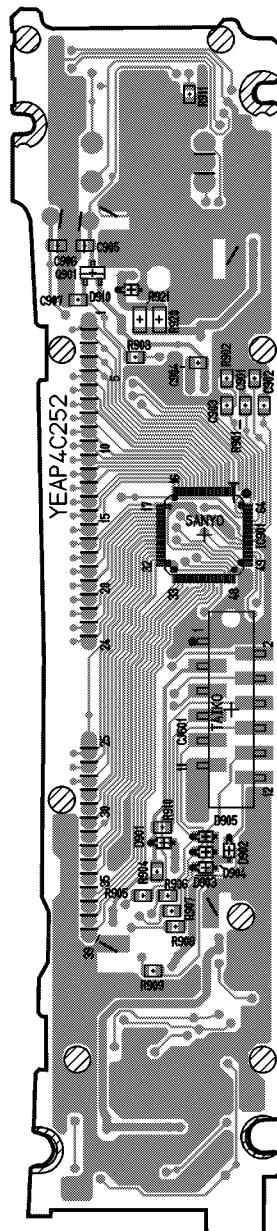
[E-4C253] [BOTTOM VIEW]

CQ-DP383 (U.W.WJ) Main PCB

### 9.3. Display Block



[E-4C252] [TOP VIEW]

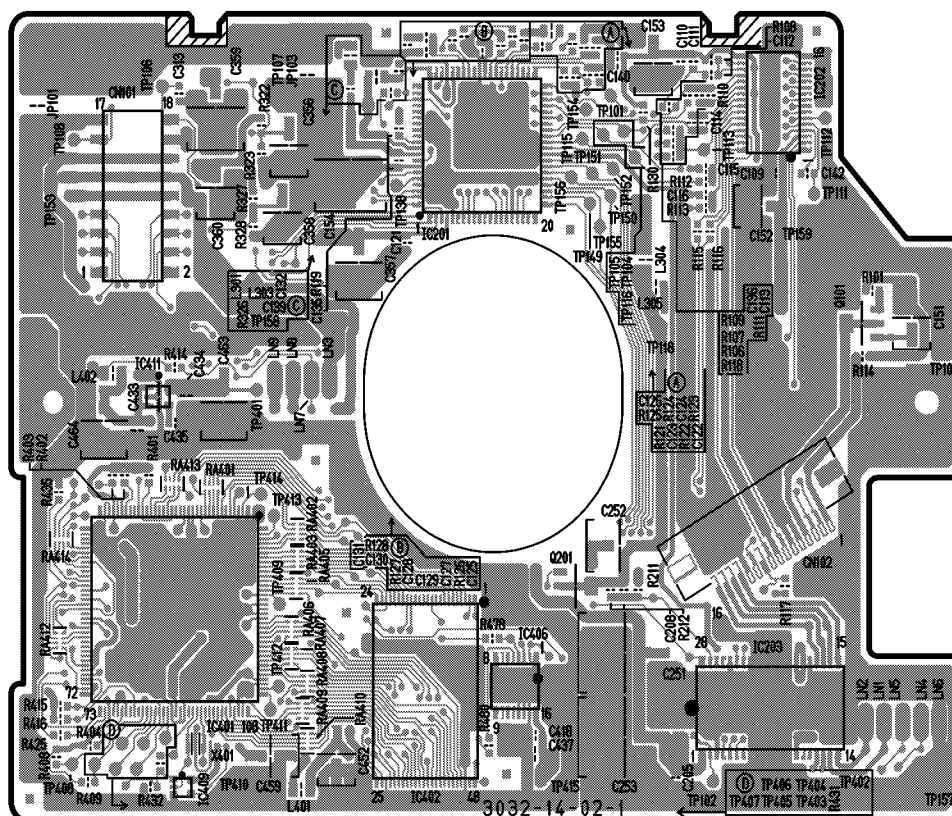


[E-4C252] [BOTTOM VIEW]

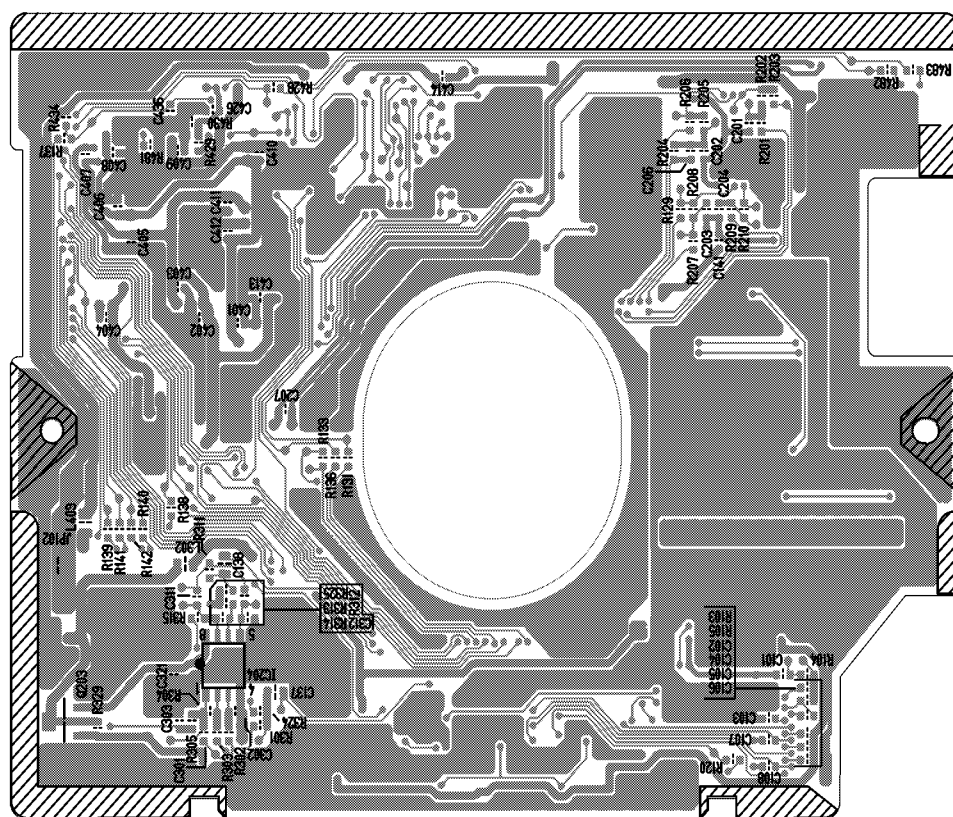
### CQ-DP383 (U.W.WJ) Display PCB



## 9.4. CD Servo Block



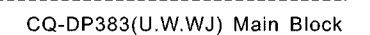
[3032-12-02] [TOP VIEW]



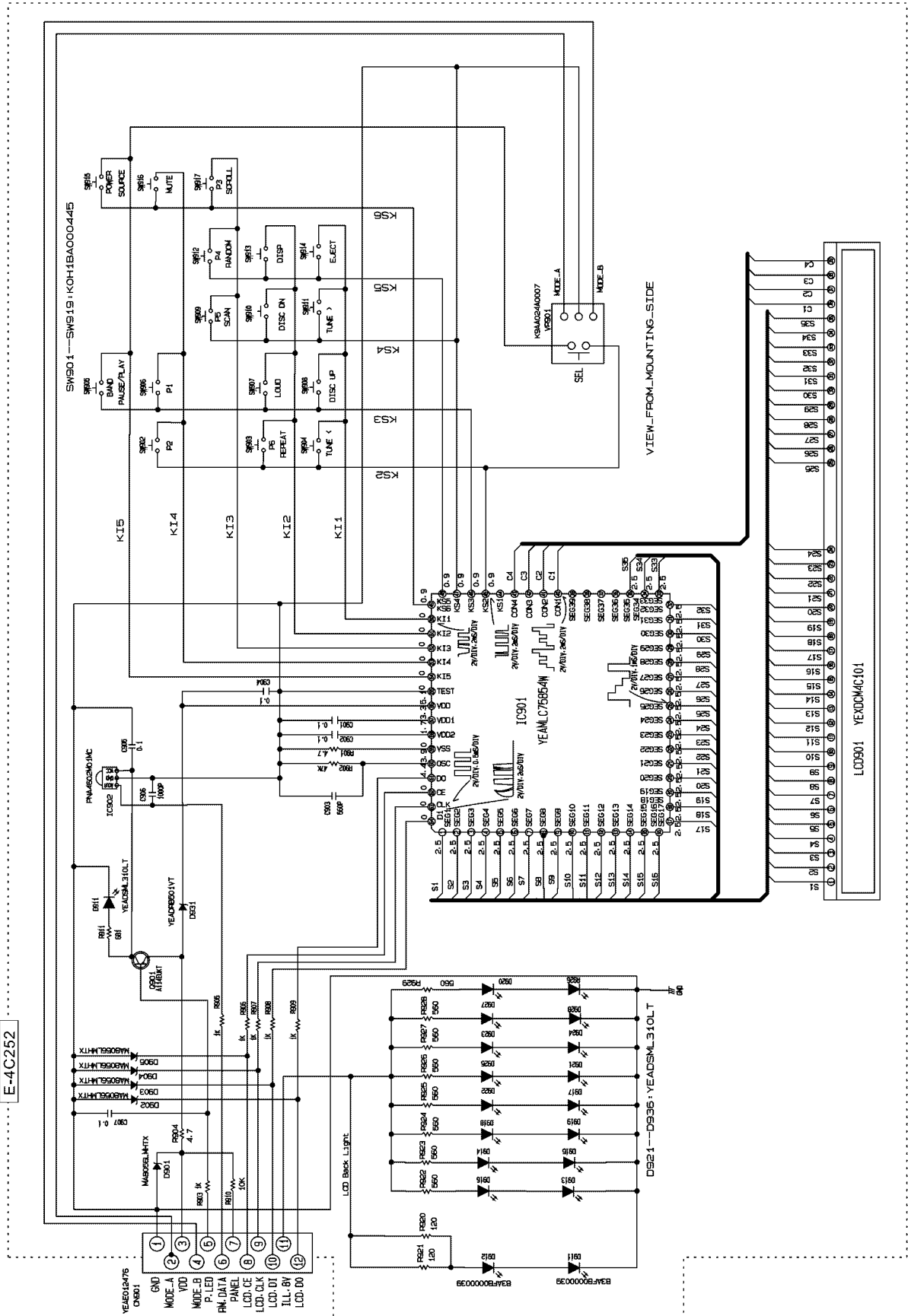
[3032-12-02] [BOTTOM VIEW]

**CQ-DP383(U.W.WJ) CD SERVO PCB**



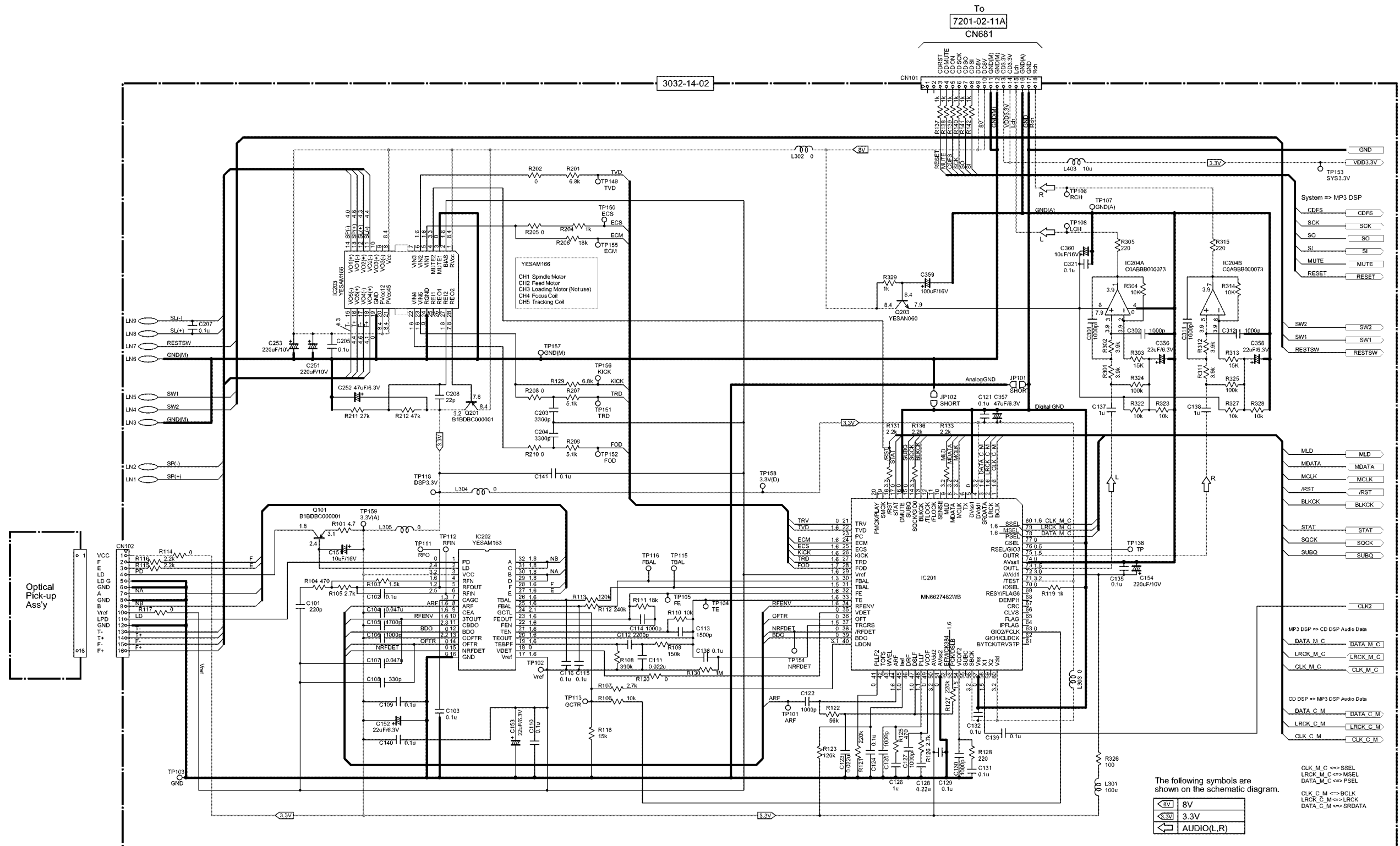


10.2. Display Block



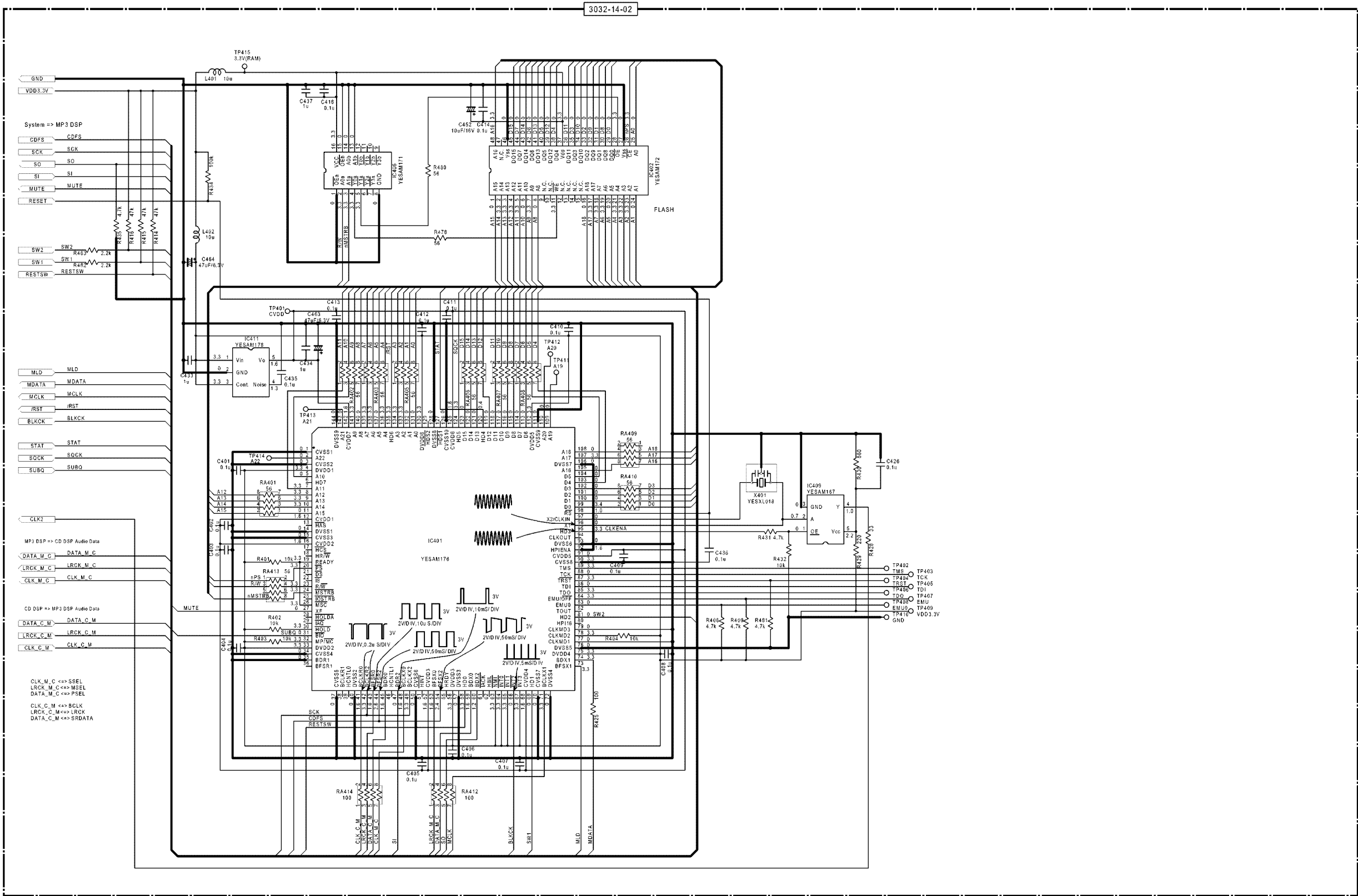
CQ-DP383(U.W.WJ) Display Block

## 10.3. CD Servo Block-1



CQ-DP383(U.W.WJ) CD Servo Block-1

10.4. CD Servo Block-2



CQ-DP383(U.W.WJ) CD Servo Block-2

# 11 TERMINALS DESCRIPTION

## 11.1. Main Block

### IC600 : UPD784224108

Pin No.	Port	Descriptions	I/O (V)	FM (V)	AM (V)	CD (V)
1	NC	(Connecting to ground)	-	0	0	0
2	NC	(Connecting to ground)	-	0	0	0
3	NC	(Connecting to ground)	-	0	0	0
4	AVSS	Analog ground	-	0	0	0
5	AF MUTE	AF mute	O	5.1	5.1	5.2
6	AMP-CNT	Power Amp. stand-by	O	5.1	5.1	5.2
7	AVREF	Reference voltage	-	5.1	5.1	5.2
8	CD-MISO	CD data	I	0	0	0
9	CD-MOSI	CD data	O	0	0	2.4
10	CD-SCK	CD clock	O	0	0	5.1
11	CD.C DATA	Not used	-	-	-	-
12	NC	No connection	-	-	-	-
13	CD.C CLK	Not used	-	-	-	-
14	REM OUT	Not used	-	-	-	-
15	BZOUT	Not used	-	-	-	-
16	PLL-MISO	Data from PLL	I	5.1	5.1	5.1
17	PLL-MOSI	Data for PLL	O	0	0	0
18	PLL-CLK	Clock for PLL	O	5.1	5.1	5.2
19	PLL-CE	PLL chip enable	O	0	0	0
20	NC	No connection	-	-	-	-
21	NC	No connection	-	-	-	-
22	NC	No connection	-	-	-	-
23	NC	No connection	-	-	-	-
24	CD-STB	CD strobe	O	0	0	5.1
25	CD-A0	CD address 0	O	0	0	4.4
26	CD-RST	CD reset	O	0	0	5.1
27	CD-RFOK	CD RFOK signal	I	0	0	5.0
28	CD-LOCK	CD lock signal	I	0	0	5.0
29	CD-LIMIT	CD limit sw	I	0	0	5.1
30	CD-SW2	CD SW2	I	5.1	5.1	0
31	NC	No connection	-	-	-	-
32	NC	No connection	-	-	-	-
33	Vss	Ground	-	0	0	0
34	S.LED	Not used	-	-	-	-
35	ST-IND	FM stereo detection	I	5.0	5.1	5.1
36	IC2-CLK	Electronic volume clock	O	5.1	5.1	5.2
37	IC2-DATA	Electronic volume data	I/O	5.1	0	5.2
38	NC	No connection	-	-	-	-
39	NC	No connection	-	-	-	-
40	NC	No connection	-	-	-	-
41	LCD-MOSI	LCD data output	O	0	0	0
42	LCD-MISO	LCD data input	I	5.0	5.0	5.0
43	LCD-CLK	LCD clock	O	0	0	0
44	LCD-CE	LCD chip enable output	O	0	0	0
45	POWER LED	Pilot lamp on	O	0	0	0
46	ANT.CONT	Motor antenna control	O	5.1	5.1	0
47	NC	No connection	-	-	-	-
48	NC	No connection	-	-	-	-
49	REM-IN_SUB	Remote control sig. sampling	I	0	4.4	4.4
50	NC	No connection	-	-	-	-
51	NC	No connection	-	-	-	-
52	NC	No connection	-	-	-	-
53	NC	No connection	-	-	-	-
54	TEL-MUTE	Not used	-	-	-	-
55	PANEL-DET	Panel detect	I	0	4.8	4.9
56	CD-ON	CD power control	O	0	0	5.1
57	PWR CNT	Power control	O	5.0	5.0	5.0
58	ACC-DET	ACC detection	I	5.1	5.1	5.1
59	MUTE	MUTE	O	5.1	5.1	5.1
60	/RESET	Reset input	I	5.1	5.1	5.1
61	REM	Remocon data input	I	4.4	4.4	4.4
62	BATT	Battery detection	I	5.1	5.1	5.1
63	CD SW1	CD SW1	I	0	0	0
64	CD.C.STB	(Ground pull-down)	I	0	0	0
65	MODE A	MODE A	I	0	0	0
66	MODE B	MODE B	I	0	0	0

Pin No.	Port	Descriptions	I/O (V)	FM (V)	AM (V)	CD (V)
67	VSS	Ground	-	0	0	0
68	VDD	+5V power supply	-	5.1	5.1	5.1
69	X2	Crystal oscillator	-	3.1	3.1	3.1
70	X1	Crystal oscillator	-	2.2	2.2	2.2
71	Vpp	(Ground pull-down)	-	0	0	0
72	SUB-X2	Crystal oscillator	-	3.1	3.1	3.1
73	SUB-X1	Crystal oscillator	-	2.5	2.5	2.5
74	AVDD	+5V power supply	-	5.1	5.1	5.1
75	AVREF	(Connecting to VDD)	-	5.1	5.1	5.1
76	VSM DET	S-meter detection	I	0	0	0
77	INIT A	Initial value A	I	0	0	0
78	INIT B	Initial value B	I	0	0	0
79	INIT C	Initial value C	I	0	0	0
80	INIT D	Initial value D	I	0	0	0

#### Note 1 :

Voltage measuerments are with respect to ground, with a voltmeter (internal resistance : 10M ohms).

## 11.2. Display Block

### IC901 : YEAMLC75854W

Pin No.	Port	Descriptions	I/O (V)	(V)
1-35	SEG1-35	LCD segment	O	2.5
36-39	NC	No connection	-	-
40-43	COM1-4	LCD common	O	2.5
44-49	KS1-6	Key data output	O	0.9
50-54	KI1-5	Key data input	I	0
55	TEST	(Connecting to ground)	-	0
56	VDD	+5V power supply	-	5.1
57	VDD1	Ground through capacitor	-	3.3
58	VDD2	Ground through capacitor	-	1.7
59	Vss	Ground	-	0
60	OSC	CR oscillator	-	3.9
61	DO	Key data output	O	4.4
62	CE	Chip enable	I	0
63	CLK	LCD clock	I	0
64	DI	LCD data input	I	0

## 11.3. CD Servo Block

### IC401 : YESAM176

Pin No.	Port	Descriptions	I/O (V)	(V)
1	CVSS1	GND	-	0
2	-	-	-	-
3	CVSS2	GND	-	0
4	DVSS1	I/O system (3.3V) power supply	-	3.3
5	A10	Address bus of FLASH ROM	O	0
6	-	-	-	-
7	A11	Address bus of FLASH ROM	O	3.3
8	A12		O	3.3
9	A13		O	3.3
10	A14		O	3.3
11	A15		O	3.3
12	/CVDD1	CORE CPU system (1.6V) power supply	-	1.6
13	-	-	-	-
14	DVSS1	GND	-	0
15	CVSS3	GND	-	0
16	/CVDD2	I/O system (3.3V) power supply	-	1.6
17	-	-	-	-

Pin No.	Port	Descriptions	I/O	(V)
18	-	-	-	-
19	-	-	-	-
20	nPS	FLASH ROM selection signal	O	3.3
21	-	-	-	-
22	-	-	-	-
23	R/W	Lead/light signal to FLASH ROM	O	3.3
24	nMSTRB	Memory access signal	O	3.3
25	-	-	-	-
26	-	-	-	-
27	MUTE	Mute signal output (H:Mute on)	O	0
28	-	-	-	-
29	-	-	-	-
30	-	-	-	-
31	SUBO	SUBO input	I	0
32	-	Operation mode setting (external pull-up)	I	3.3
33	DVDD2	I/O system (3.3V) power supply	-	3.3
34	CVSS4	GND	-	0
35	(GND)	GND	I	0
36	-	-	-	-
37	CVSS5	GND	-	0
38	-	-	-	-
39	-	-	-	-
40	DVSS2	GND	-	0
41	CLK C M	AUDIO bit clock input	I	1.6
42	SCK	Clock input	I	3.3
43	LRCK C M	AUDIO L/R identifying signal input	I	1.6
44	CDFS	Serial frame sink signal input	I	2.6
45	DATA M C	AUDIO serial data input	I	1.6
46	-	-	-	-
47	SI	Serial data input	I	0
48	CLK M C	AUDIO bit clock output	O	1.6
49	SCK	Clock input	I	3.3
50	CVSS6	GND	-	0
51	-	-	-	-
52	CVDD3	CORE CPU system (1.6V) power supply	-	1.6
53	LRCK M C	AUDIO L/R identifying signal output	O	1.6
54	CDFS	Serial frame sink signal input	I	2.4
55	-	-	-	-
56	DVDD3	I/O system (3.3V) power supply	-	3.3
57	DVSS3	GND	-	0
58	REST SW	Mechanics deck REST SW input	I	3.3
59	DATA M C	AUDIO serial data output	O	1.6
60	SO	Serial data output	O	1.2
61	-	-	-	-
62	-	-	-	-
63	-	-	-	-
64	-	-	-	-
65	-	-	-	-
66	BLKCK	Subcode block clock pulse input	I	0
67	-	-	-	-
68	DVDD4	CORE CPU system (1.6V) power supply	-	1.6
69	SW1	Mechanics deck SW1 input	I	0
70	CVSS7	GND	-	0
71	MCLK	Clock output (To Servo DSP)	O	3.3
72	DVSS4	GND	-	0
73	MLD	Command load signal output (To Servo DSP)	I	3.3
74	MDATA	Command data output (To Servo DSP)	O	3.3
75	DVDD4	I/O system (3.3V) power supply	-	3.3
76	DVSS5	GND	-	0
77	-	Clock mode setting (L fixation)	I	0

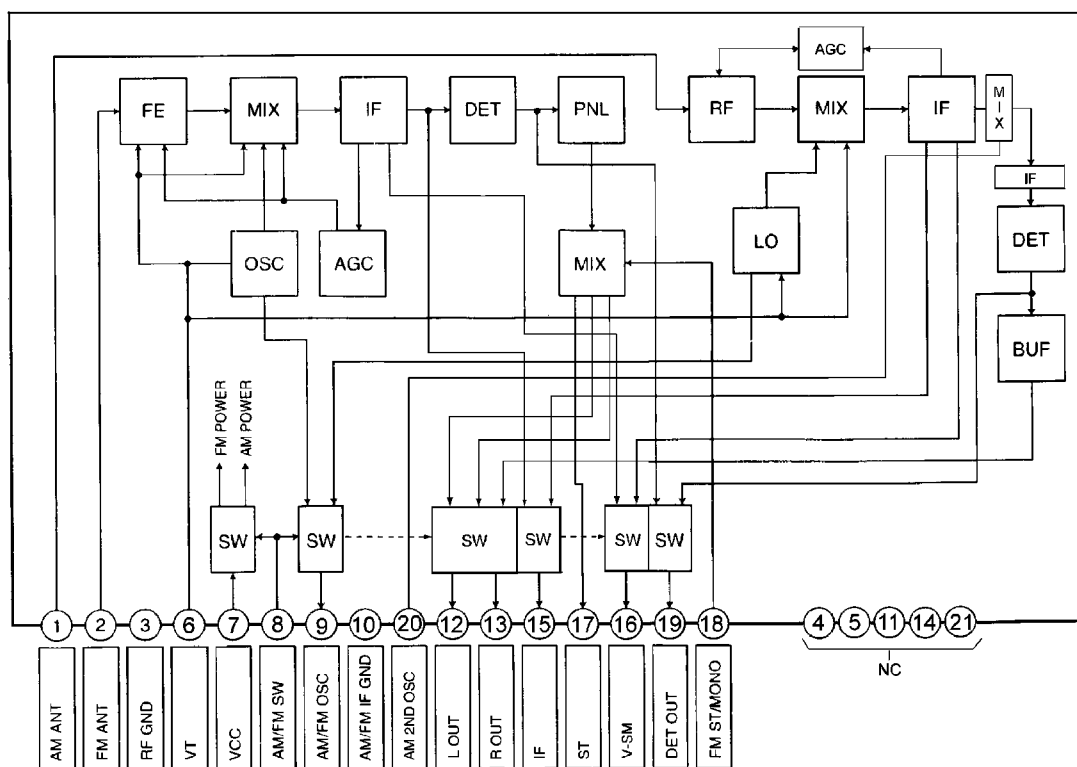
Pin No.	Port	Descriptions	I/O	(V)
78	-	Clock mode setting (H fixation)	I	3.3
79	-	Clock mode setting (L fixation)	I	-
80	-	-	-	-
81	SW2	Mechanics deck SW2 input	I	0
82	-	-	-	-
83	-	-	-	-
84	-	-	-	-
85	-	-	-	-
86	-	-	-	-
87	-	-	-	-
88	-	-	-	-
89	-	-	-	-
90	CVSS8	GND	-	3.3
91	CVDD5	CORE CPU system (1.6V) power supply	-	0
92	(GND)	GND	I	1.6
93	DVSS6	GND	-	0
94	-	-	-	-
95	CLKENA	Oscillation output Cainabl signal	O	3.3
96	1	Crystal Connection	O	0
97	2	Crystal Connection	I	0
98	(VDD)	Reset signal input	I	1
99	D0	Data base of FLASH ROM	I/O	3.4
100	D1		I/O	0
101	D2		I/O	0
102	D3		I/O	0
103	D4		I/O	0
104	D5		I/O	0
105	A16	Address bus of FLASH ROM	O	0
106	DVSS7	GND	-	0
107	A17	Address bus of FLASH ROM	O	3.3
108	A18		O	0
109	A19	Address bus of FLASH ROM	O	0
110	A20		O	0
111	CVSS9	GND	-	0
112	DVDD5	I/O system (3.3V) power supply	-	3.3
113	D6	Data bus of FLASH ROM	I/O	0
114	D7		I/O	0
115	D8		I/O	0
116	D9		I/O	0
117	D10		I/O	0
118	D11		I/O	0
119	D12		I/O	0
120	STAT	Status signal input	I	0.4
121	D13	Data path of FLASH ROM	I/O	0
122	D14		I/O	0
123	D15		I/O	0
124	SQCK	SOCK clock output(To Servo DPS)	O	3.2
125	CVDD6	CORE CPU system (1.6V) power supply	-	1.6
126	CVSS10	GND	-	0
127	-	-	-	-
128	DVSS8	I/O system (3.3V) power supply	-	0
129	-	-	-	-
130	DVDD6	I/O system (3.3V) power supply	-	3.3
131	A0	Address bus of FLASH ROM	O	0
132	A1		O	0
133	A2		O	3.3
134	A3		O	3.3
135	/RST	Reset signal output(To Servo DSP)	O	3.3
136	A4	Address bus of FLASH ROM	O	3.3
137	A5		O	0
138	A6		O	3.3
139	A7		O	3.3
140	A8		O	0
141	A9		O	3.3



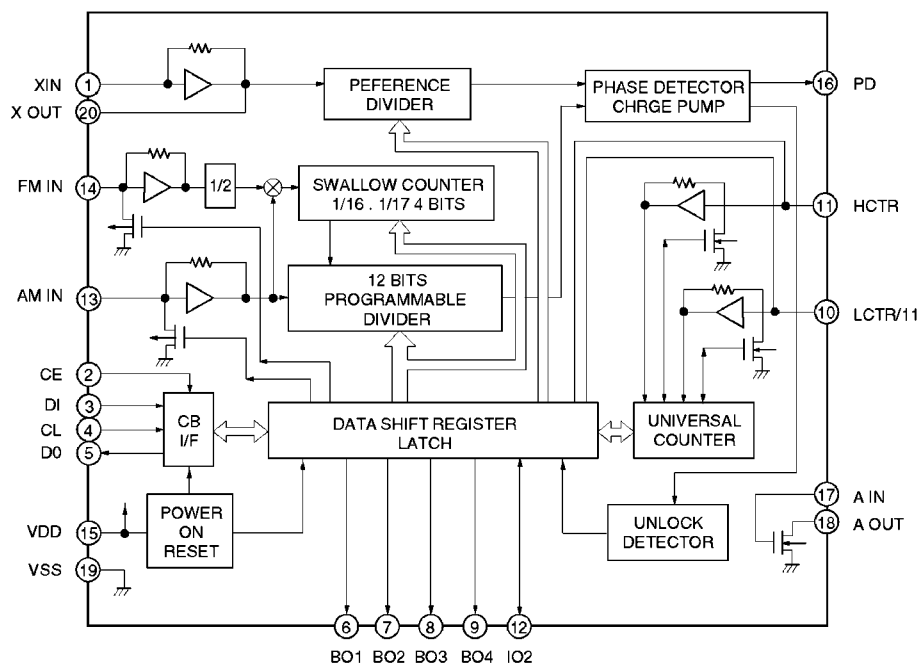
Pin No.	Port	Descriptions	I/O	(V)
142	CVDD7	CORE CPU system (1.6V) power supply	-	1.6
143	-	-	-	-
144	DVSS9	GND	-	0

# 12 PACKAGE AND IC BLOCK DIAGRAM

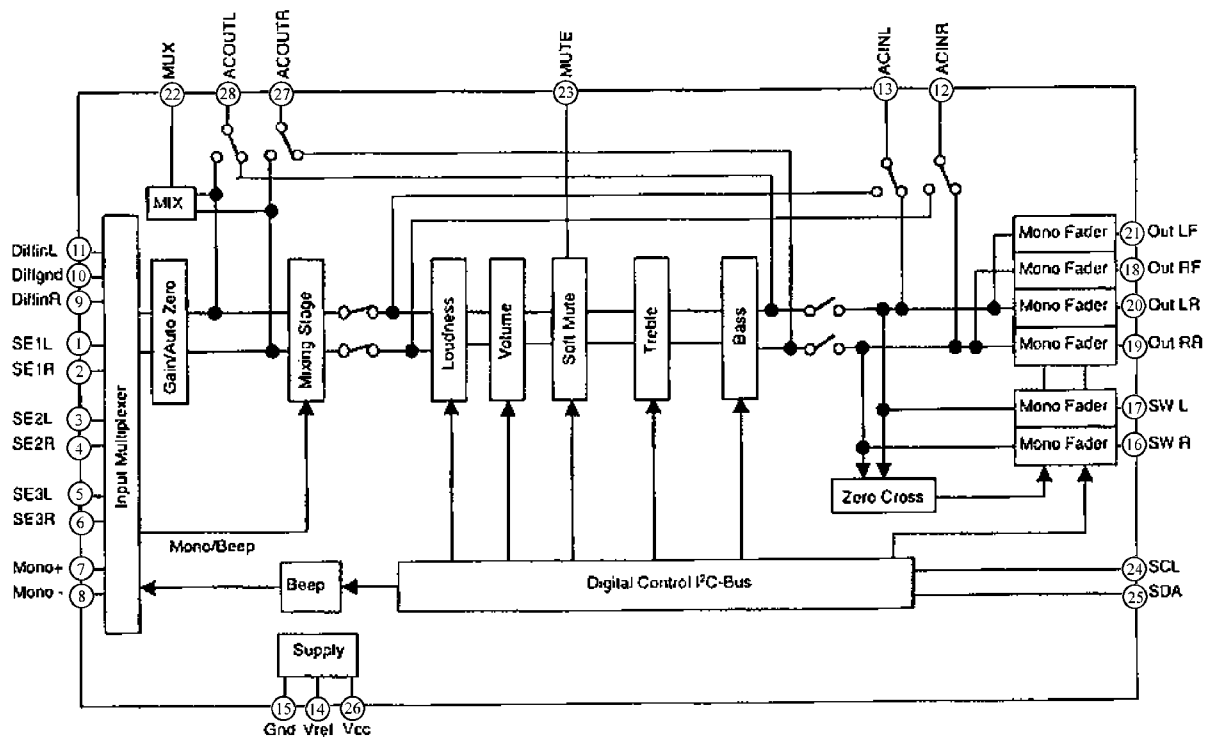
## 12.1. Main Block



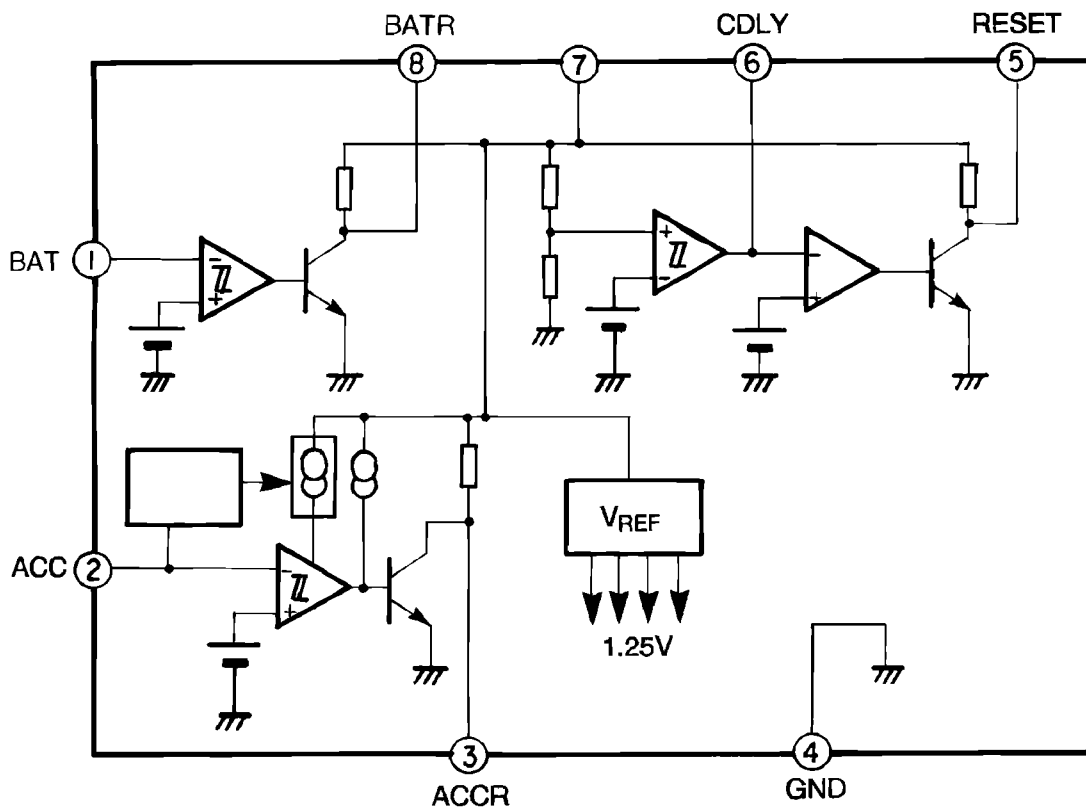
P50 : C5BA00000109



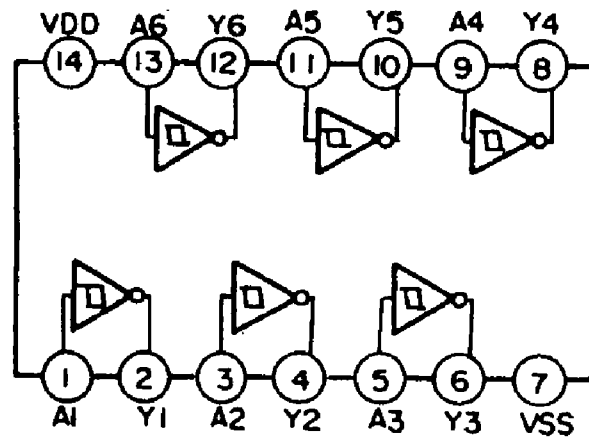
IC100 : YEAMLC72135M



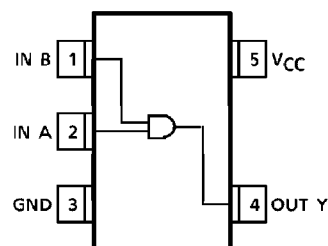
IC300 : C1BB00000543



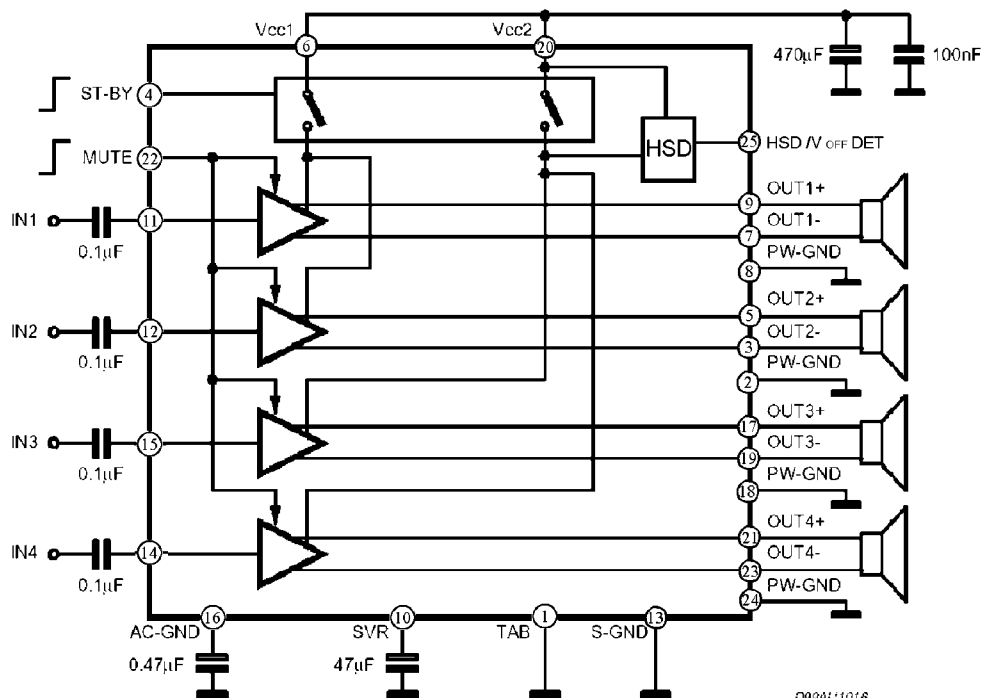
IC400 : AN8065S\_E1



IC500 : YEAMTC4584FN

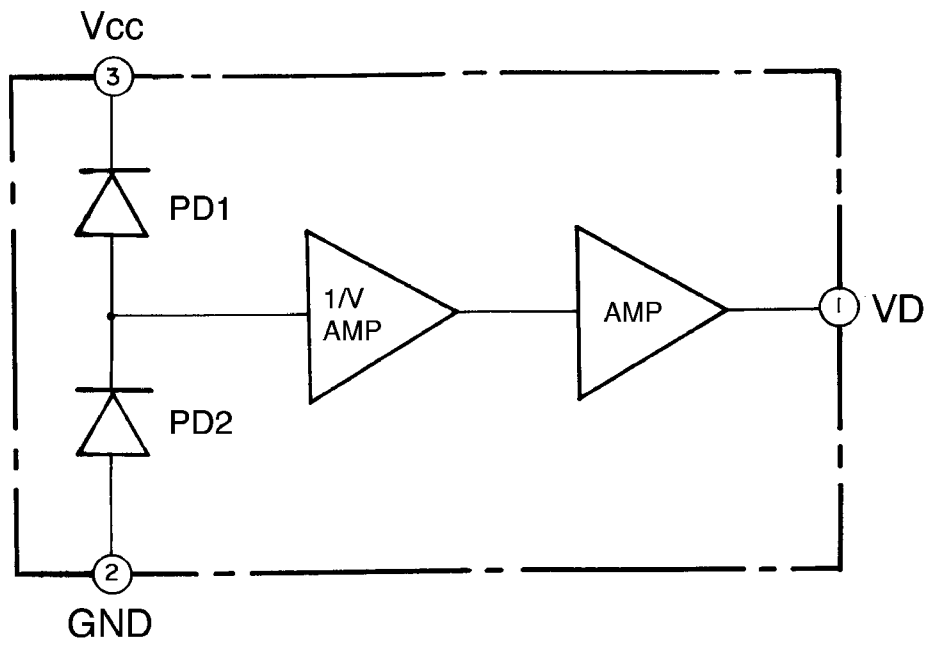


IC700 : C0JBAA000115



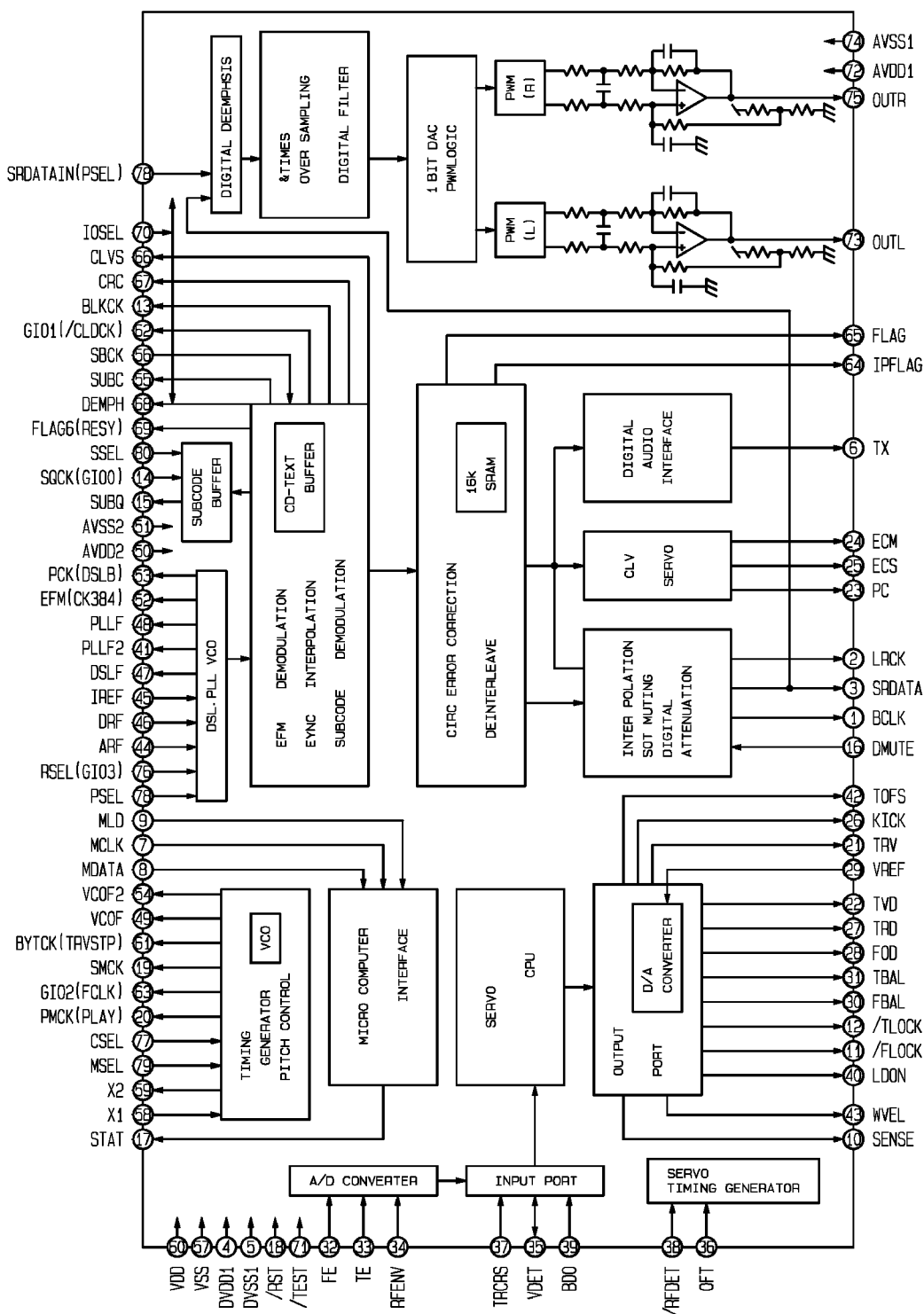
IC270 : C1EA00000029

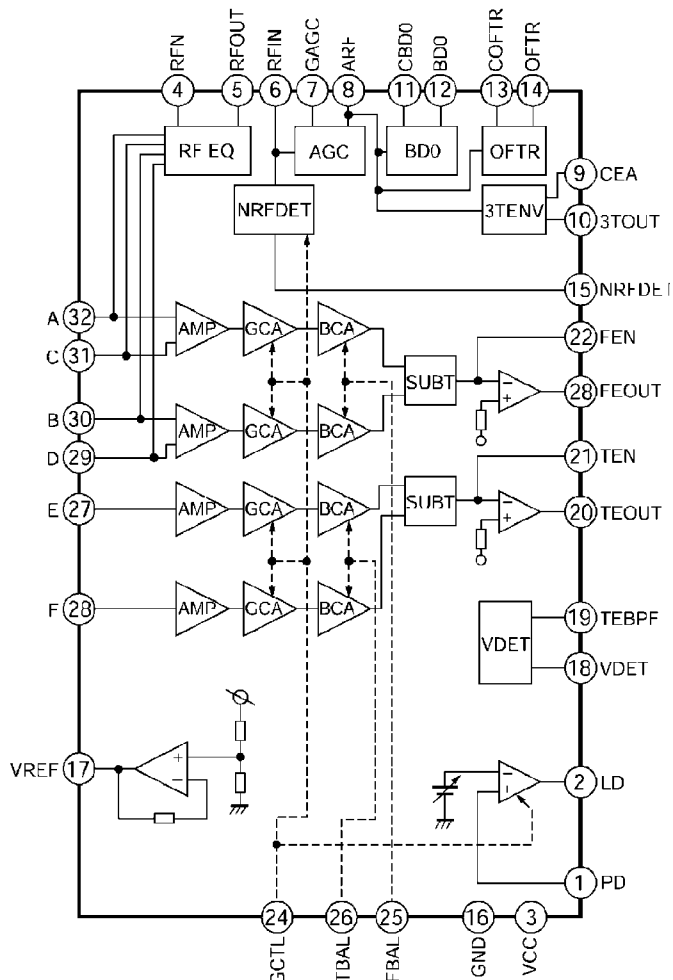
## 12.2. Display Block



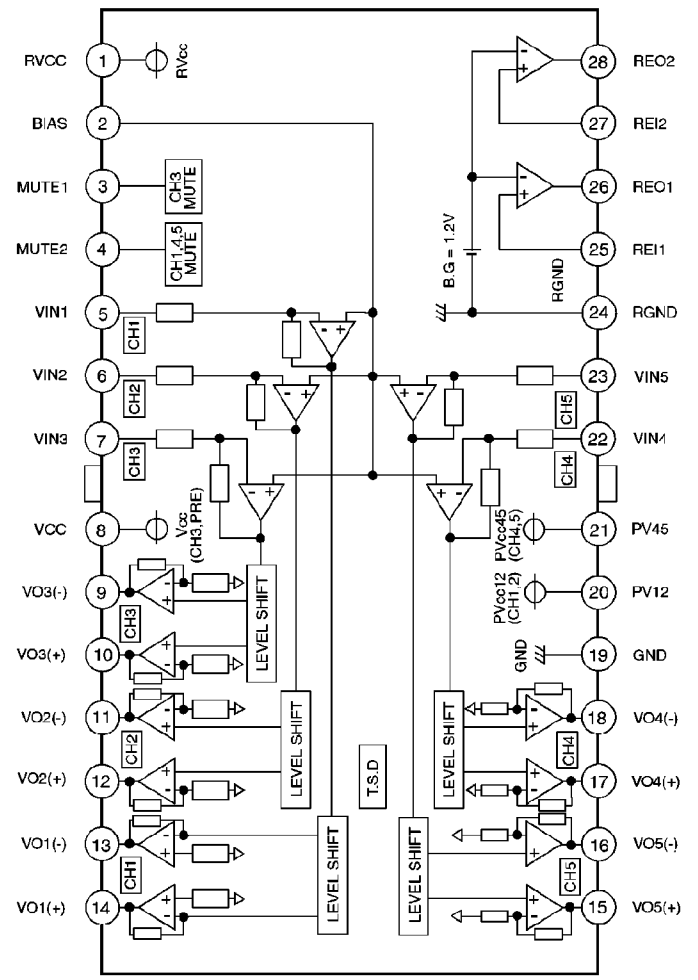
IC902 : PNA4602M01MC

## 12.3. CD Servo Block

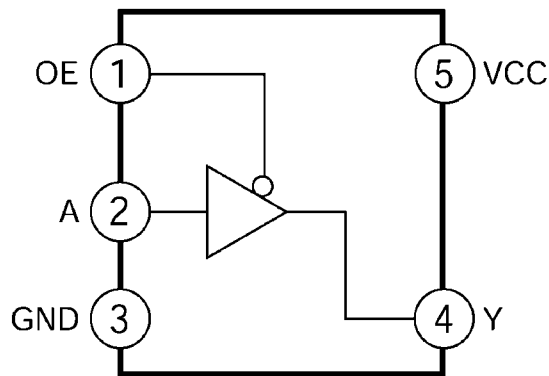




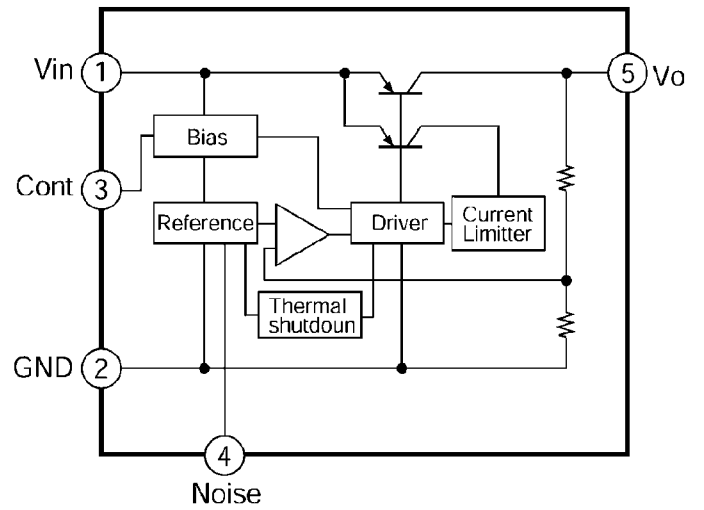
IC202 : YESAM163



IC203 : YESAM166




IC409 : YESAM167



IC411 : YESAM178

# 13 REPLACEMENT PARTS LIST

## Note:

1. Be sure to make your orders of replacement parts according to this list.
2. Important safety notice: Component, identified by  mark have special characteristics important for safety. when replacing any of these components, use only manufacturer's specified parts.
3. Location keys in the remarks column indicates the general location of the parts shown in the exploded drawing, as in a load map.
4. The marking (RTL) indicates that Retention Time is limited for this item. After the discontinuation of assembly in production, the item will continue to be availability is dependent on the type of assembly, and in accordance with the laws governing part and product retention. At the end of this period, the assembly will no longer be available.
5. "T" marks in remarks column are indicated supply parts of TAMACO.
  - Order intake period is basically six months after the first shipment

Ref. No.	Part No.	Part Name & Description	Remarks
1.1. IC's and Transistors			
MAIN BLOCK [E-4C253]			
IC100	YEAMLC72135M	IC	T
IC270	C1EA00000029	IC	T
IC300	C1BB00000543	IC	T
IC400	AN8065S-E1	IC	T
IC500	YEAMTC4584FN	IC	T
IC600	UPD784225108	IC	T
IC700	C0JBAA000115	IC	T
P50	C5BA00000110	Tuner	T
Q50	YEANAL23YSAT	Transistor	T
Q51	YEANDTC144ST	Transistor	T
Q62	YEANDTA144ST	Transistor	T
Q241	YEANDTC323TK	Transistor	T
Q242	YEANDTC323TK	Transistor	T
Q341	YEANDTC323TK	Transistor	T
Q342	YEANDTC323TK	Transistor	T
Q630	YEANDTA144ST	Transistor	T
Q700	YEAND1762EF	Transistor	T
Q703	YEANKRC107M	Transistor	T
Q710	YEANB1243QRT	Transistor	T
Q720	YEANKRC107M	Transistor	T
Q730	YEAN2SD1020T	Transistor	T
Q740	YEAND1762EF	Transistor	T
Q750	YEAND1762EF	Transistor	T
Q770	YEANDTC114ST	Transistor	T
Q800	YEAN2SD2007T	Transistor	T
Q801	YEAMKIA7808	Transistor	T
Q820	YEANB1243QRT	Transistor	T
Q830	YEANKRC107M	Transistor	T
Q840	YEANB1243QRT	Transistor	T
Q850	YEANKRC107M	Transistor	T
Q860	YEANB1243QRT	Transistor	T
Q870	YEANKRC107M	Transistor	T
Q880	C0CAAJG000005	Transistor	T
Q890	YEANB1243QRT	Transistor	T
Q891	YEANC114EKT	Transistor	T
DISPLAY BLOCK [E-4C252]			
IC901	YEAMLC75854W	IC	T
IC902	PNA4602M01MC	IC	T
Q901	YEANAL14EKT	Transistor	T
1.2. Diodes			
MAIN BLOCK [E-4C253]			
D20	YEAD1N4148C	Diode	T
D21	YEAD1A3T	Diode	T
D600	YEADRD56JS3T	Zener Diode	T
D601	YEADRD56JS3T	Zener Diode	T
D602	YEADRD56JS3T	Zener Diode	T

Ref. No.	Part No.	Part Name & Description	Remarks
D603	YEADRD56JS3T	Zener Diode	T
D700	YEADMTZJ51CT	Zener Diode	T
D701	YEADMTZJ39BT	Zener Diode	T
D702	YEADMTZJ91BT	Zener Diode	T
D703	YEAD1N4005ST	Silicon Diode	T
D704	YEAD1N4005ST	Silicon Diode	T
D706	YEADRD62JS3T	Zener Diode	T
D707	YEAD1A3T	Diode	T
D708	YEAD1N5404FT	Diode	T
D800	YEADMTZJ10CT	Zener Diode	T
D801	YEAD1A3T	Diode	T
D810	YEAD1S40T	Diode	T
D820	YEAD1N4005ST	Silicon Diode	T
D830	YEAD1N4005ST	Silicon Diode	T
D840	YEAD1N4005ST	Silicon Diode	T
D870	YEAD1N4005ST	Silicon Diode	T
D961	YEAD1N4005ST	Silicon Diode	T
D962	YEAD1N4005ST	Silicon Diode	T
D963	YEAD1N4005ST	Silicon Diode	T
D964	YEADSR1544TL	Diode	T
D965	YEAD1N4005ST	Silicon Diode	T
D966	YEAD1N4005ST	Silicon Diode	T
D967	YEAD1N4005ST	Silicon Diode	T
D968	YEAD1N4005ST	Silicon Diode	T
D969	YEAD1N4148C	Diode	T
Z51	YEADYP201M	Diode	T
DISPLAY BLOCK [E-4C252]			
D901	YEADUDZ56BT	Zener Diode	T
D902	YEADUDZ56BT	Zener Diode	T
D903	YEADUDZ56BT	Zener Diode	T
D904	YEADUDZ56BT	Zener Diode	T
D905	YEADUDZ56BT	Zener Diode	T
D911	B3AFB0000039	LED WHITE (LWA67C)	T
D912	B3AFB0000039	LED WHITE (LWA67C)	T
D913	YEADSM310LT	LED (RED)	T
D914	YEADSM310LT	LED (RED)	T
D915	YEADSM310LT	LED (RED)	T
D916	YEADSM310LT	LED (RED)	T
D917	YEADSM310LT	LED (RED)	T
D918	YEADSM310LT	LED (RED)	T
D919	YEADSM310LT	LED (RED)	T
D920	YEADSM310LT	LED (RED)	T
D921	YEADSM310LT	LED (RED)	T
D922	YEADSM310LT	LED (RED)	T
D923	YEADSM310LT	LED (RED)	T
D924	YEADSM310LT	LED (RED)	T
D925	YEADSM310LT	LED (RED)	T
D926	YEADSM310LT	LED (RED)	T
D927	YEADSM310LT	LED (RED)	T
D928	YEADSM310LT	LED (RED)	T
D930	YEADSM310LT	LED (RED)	T
D931	YEADRB501VT	Diode	T
1.3 Capacitors			
MAIN BLOCK [E-4C253]			
C34	ECUV1H470JCN	Ceramic 47pF 50WV	T
C50	ECUV1H103KEN	Ceramic 0.01MFD 50WV	T
C51	ECUV1H103KEN	Ceramic 0.01MFD 50WV	T
C52	ECEALCKS470I	Electrolytic 47MFD 16WV	T
C53	ECUV1H103KEN	Ceramic 0.01MFD 50WV	T
C54	ECUV1H223KEN	Ceramic 0.022MFD 50WV	T
C55	ECUV1H223KEN	Ceramic 0.022MFD 50WV	T
C56	ECUV1H103KEN	Ceramic 0.01MFD 50WV	T
C57	ECUV1H102KEN	Ceramic 0.001MFD 50WV	T
C100	ECUV1H220JCN	Ceramic 22pF 50WV	T
C101	ECUV1H220JCN	Ceramic 22pF 50WV	T
C102	ECEA0JKS101I	Electrolytic 100MFD 6.3WV	T
C103	ECUV1H103KEN	Ceramic 0.01MFD 50WV	T
C104	ECUV1H101KEN	Ceramic 100pF 50WV	T
C105	ECQV1H224JL2	Plastic Film 0.22MFD 50WV	T
C106	ECUV1H223KEN	Ceramic 0.022MFD 50WV	T



Ref. No.	Part No.	Part Name & Description	Remarks
C107	ECUV1H103KBN	Ceramic 0.01MFD 50WV	T
C108	ECUV1H103KBN	Ceramic 0.01MFD 50WV	T
C109	ECUV1H103KBN	Ceramic 0.01MFD 50WV	T
C110	ECEA1AKS221I	Electrolytic 220MFD 10WV	T
C111	ECEA1AKS221I	Electrolytic 220MFD 10WV	T
C215	ECEA1CKS100I	Electrolytic 10MFD 16WV	T
C216	ECEA1HKS3R3I	Electrolytic 3.3MFD 50WV	T
C217	ECEA1HKS3R3I	Electrolytic 3.3MFD 50WV	T
C218	ECEA1HKS3R3I	Electrolytic 3.3MFD 50WV	T
C219	ECEA1HKS3R3I	Electrolytic 3.3MFD 50WV	T
C220	ECEA1HKS2R2I	Electrolytic 2.2MFD 50WV	T
C221	ECEA1HKS2R2I	Electrolytic 2.2MFD 50WV	T
C241	ECEA1HKS010I	Electrolytic 1MFD 50WV	T
C242	ECEA1HKS010I	Electrolytic 1MFD 50WV	T
C243	ECEA1HKS3R3I	Electrolytic 3.3MFD 50WV	T
C249	ECUV1H222KBN	Ceramic 2200pF 50WV	T
C250	ECUV1H222KBN	Ceramic 2200pF 50WV	T
C280	ECUV1H152KBN	Ceramic 1500pF 50WV	T
C281	ECUV1H152KBN	Ceramic 1500pF 50WV	T
C282	ECUV1H152KBN	Ceramic 1500pF 50WV	T
C283	ECUV1H152KBN	Ceramic 1500pF 50WV	T
C290	ECEA1HKS3R3I	Electrolytic 3.3MFD 50WV	T
C291	ECEA1HKS3R3I	Electrolytic 3.3MFD 50WV	T
C292	ECEA1HKS3R3I	Electrolytic 3.3MFD 50WV	T
C293	ECEA1HKS3R3I	Electrolytic 3.3MFD 50WV	T
C294	ECEA1HKS3R3I	Electrolytic 3.3MFD 50WV	T
C295	ECEA1HKS3R3I	Electrolytic 3.3MFD 50WV	T
C341	ECEA1HKS010I	Electrolytic 1MFD 50WV	T
C342	ECEA1HKS010I	Electrolytic 1MFD 50WV	T
C343	ECEA1HKS3R3I	Electrolytic 3.3MFD 50WV	T
C349	ECUV1H222KBN	Ceramic 2200pF 50WV	T
C350	ECUV1H222KBN	Ceramic 2200pF 50WV	T
C380	ECEA1HKS2R2I	Electrolytic 2.2MFD 50WV	T
C400	ECUV1C474KBN	Chip 0.47MFD 16WV	T
C401	ECUV1H104KBN	Ceramic 0.1MFD 50WV	T
C500	ECUV1H103KBN	Ceramic 0.01MFD 50WV	T
C600	ECUV1H220JCN	Ceramic 22pF 50WV	T
C601	ECUV1H220JCN	Ceramic 22pF 50WV	T
C602	ECUV1H104KBN	Ceramic 0.1MFD 50WV	T
C604	YEECFYH0H223	Electrolytic 22000MFD 5.5WV	T
C605	ECUV1C474KBN	Chip 0.47MFD 16WV	T
C606	ECEA0JKS331I	Electrolytic 330MFD 6.3WV	T
C607	ECEA0JKS331I	Electrolytic 330MFD 6.3WV	T
C610	ECEA0JKS331I	Electrolytic 330MFD 6.3WV	T
C611	ECEA0JKS331I	Electrolytic 330MFD 6.3WV	T
C630	ECEA1CKS470I	Electrolytic 47MFD 16WV	T
C631	ECEA1HKS010I	Electrolytic 1MFD 50WV	T
C669	ECEA1AKS221I	Electrolytic 220MFD 10WV	T
C701	ECEA0JKS101I	Electrolytic 100MFD 6.3WV	T
C703	ECEA1CKS100I	Electrolytic 10MFD 16WV	T
C704	ECEA1AKS101I	Electrolytic 100MFD 10WV	T
C705	ECEA1AKS221I	Electrolytic 220MFD 10WV	T
C706	ECEA1AKS221I	Electrolytic 220MFD 10WV	T
C707	ECEA1CKS101I	Electrolytic 100MFD 16WV	T
C708	ECEA1CKS100I	Electrolytic 10MFD 16WV	T
C709	ECEA1CKS101I	Electrolytic 100MFD 16WV	T
C718	ECUV1C474KBN	Chip 0.47MFD 16WV	T
C720	ECA1CDT332L	Electrolytic 3300MFD 16WV	T
C721	ECEA1HKS2R2I	Electrolytic 2.2MFD 50WV	T
C722	ECEA1HKS010I	Electrolytic 1MFD 50WV	T
C727	ECEA1CKS470I	Electrolytic 47MFD 16WV	T
C730	ECEA1HKS010I	Electrolytic 1MFD 50WV	T
C731	ECEA1HKS010I	Electrolytic 1MFD 50WV	T
C732	ECEA1HKS010I	Electrolytic 1MFD 50WV	T
C733	ECEA1HKS010I	Electrolytic 1MFD 50WV	T
C734	ECALAM102B	Electrolytic 1000MFD 10WV	T
C770	ECUV1H104KBN	Ceramic 0.1MFD 50WV	T
C800	ECEA1CKS101I	Electrolytic 100MFD 16WV	T
C801	ECEA1AKS221I	Electrolytic 220MFD 10WV	T
C802	ECEA1AKS221I	Electrolytic 220MFD 10WV	T
C804	ECEA1AKS101I	Electrolytic 100MFD 10WV	T
C833	ECEA1CKS101I	Electrolytic 100MFD 16WV	T
C834	ECEA1CKS101I	Electrolytic 100MFD 16WV	T

Ref. No.	Part No.	Part Name & Description	Remarks
C880	ECUV1H103KBM	Ceramic 0.01MFD 50WV	T
C881	ECUV1H101KBN	Ceramic 100pF 50WV	T
DISPLAY BLOCK [E-4C252]			
C901	ECUV1H104KBN	Ceramic 0.1MFD 50WV	T
C902	ECUV1H104KBN	Ceramic 0.1MFD 50WV	T
C903	ECUV1H561KBN	Ceramic 560pF 50WV	T
C904	ECUV1H104KBN	Ceramic 0.1MFD 50WV	T
C905	ECUV1H104KBN	Ceramic 0.1MFD 50WV	T
C906	ECUV1H102KBN	Ceramic 0.001MFD 50WV	T
C907	ECUV1H104KBN	Ceramic 0.1MFD 50WV	T
1.4 Resistors			
MAIN BLOCK [E-4C253]			
J39	ERDS2TJ154T	Carbon 150k ohms 1/4W	T
J56	ERJ6GEY0R00V	Chip 0 ohms 1/10W	T
J120	ERD25TJ181T	Carbon 180 ohms 1/4W	T
J121	ERD25TJ181T	Carbon 180 ohms 1/4W	T
J123	ERD25TJ181T	Carbon 180 ohms 1/4W	T
J124	ERD25TJ181T	Carbon 180 ohms 1/4W	T
J200	ERJ6GEYJ473V	Chip 47k ohms 1/10W	T
J203	ERD25TJ102T	Carbon 1k ohms 1/4W	T
J204	ERJ6GEY0R00V	Chip 0 ohms 1/10W	T
J205	ERD25TJ102T	Carbon 1k ohms 1/4W	T
J206	ERJ8GX0R00V	Chip 0 ohms 1/8W	T
J207	ERJ6GEY0R00V	Chip 0 ohms 1/10W	T
J208	ERJ8GX0R00V	Chip 0 ohms 1/8W	T
J209	ERJ6GEY0R00V	Chip 0 ohms 1/10W	T
J210	ERJ6GEY0R00V	Chip 0 ohms 1/10W	T
J211	ERJ6GEY0R00V	Chip 0 ohms 1/10W	T
J212	ERJ8GX0R00V	Chip 0 ohms 1/8W	T
J213	ERJ6GEY0R00V	Chip 0 ohms 1/10W	T
J215	ERJ6GEY0R00V	Chip 0 ohms 1/10W	T
J216	ERJ8GX0R00V	Chip 0 ohms 1/8W	T
J217	ERJ6GEY0R00V	Chip 0 ohms 1/10W	T
J300	ERJ8GX0R00V	Chip 0 ohms 1/8W	T
J301	ERJ8GX0R00V	Chip 0 ohms 1/8W	T
J302	ERJ8GX0R00V	Chip 0 ohms 1/8W	T
J303	ERJ8GX0R00V	Chip 0 ohms 1/8W	T
J304	ERJ8GX0R00V	Chip 0 ohms 1/8W	T
J305	ERJ8GX0R00V	Chip 0 ohms 1/8W	T
J306	ERJ8GX0R00V	Chip 0 ohms 1/8W	T
J307	ERJ8GX0R00V	Chip 0 ohms 1/8W	T
J308	ERJ8GX0R00V	Chip 0 ohms 1/8W	T
J309	ERJ8GX0R00V	Chip 0 ohms 1/8W	T
J310	ERJ8GX0R00V	Chip 0 ohms 1/8W	T
J311	ERJ8GX0R00V	Chip 0 ohms 1/8W	T
J313	ERJ8GX0R00V	Chip 0 ohms 1/8W	T
J314	ERJ8GX0R00V	Chip 0 ohms 1/8W	T
J315	ERJ8GX0R00V	Chip 0 ohms 1/8W	T
J316	ERJ8GX0R00V	Chip 0 ohms 1/8W	T
J318	ERJ8GX0R00V	Chip 0 ohms 1/8W	T
J319	ERJ8GX0R00V	Chip 0 ohms 1/8W	T
J320	ERJ8GX0R00V	Chip 0 ohms 1/8W	T
J321	ERJ8GX0R00V	Chip 0 ohms 1/8W	T
J322	ERJ8GX0R00V	Chip 0 ohms 1/8W	T
J325	ERJ8GX0R00V	Chip 0 ohms 1/8W	T
J326	ERJ8GX0R00V	Chip 0 ohms 1/8W	T
J327	ERJ8GX0R00V	Chip 0 ohms 1/8W	T
J329	ERJ8GX0R00V	Chip 0 ohms 1/8W	T
J330	ERJ8GX0R00V	Chip 0 ohms 1/8W	T
J331	ERJ8GX0R00V	Chip 0 ohms 1/8W	T
J332	ERJ8GX0R00V	Chip 0 ohms 1/8W	T
J333	ERJ8GX0R00V	Chip 0 ohms 1/8W	T
J334	ERJ8GX0R00V	Chip 0 ohms 1/8W	T
J335	ERJ8GX0R00V	Chip 0 ohms 1/8W	T
J336	ERJ8GX0R00V	Chip 0 ohms 1/8W	T
J337	ERJ8GX0R00V	Chip 0 ohms 1/8W	T
J338	ERJ8GX0R00V	Chip 0 ohms 1/8W	T
J339	ERJ8GX0R00V	Chip 0 ohms 1/8W	T
J340	ERJ6GEY0R00V	Chip 0 ohms 1/10W	T
J341	ERJ8GX0R00V	Chip 0 ohms 1/8W	T
J344	ERJ8GX0R00V	Chip 0 ohms 1/8W	T
J346	ERJ8GX0R00V	Chip 0 ohms 1/8W	T
J347	ERJ8GX0R00V	Chip 0 ohms 1/8W	T

Ref. No.	Part No.	Part Name & Description	Remarks
J348	ERJ8GX0R00V	Chip 0 ohms 1/8W	T
J349	ERJ8GX0R00V	Chip 0 ohms 1/8W	T
J351	ERJ8GX0R00V	Chip 0 ohms 1/8W	T
J353	ERJ6GEY0R00V	Chip 0 ohms 1/10W	T
J354	ERJ8GX0R00V	Chip 0 ohms 1/8W	T
J357	ERJ8GX0R00V	Chip 0 ohms 1/8W	T
J358	ERJ8GX0R00V	Chip 0 ohms 1/8W	T
J363	ERJ8GX0R00V	Chip 0 ohms 1/8W	T
J364	ERJ8GX0R00V	Chip 0 ohms 1/8W	T
J365	ERJ8GX0R00V	Chip 0 ohms 1/8W	T
J371	ERJ8GX0R00V	Chip 0 ohms 1/8W	T
J372	ERJ8GX0R00V	Chip 0 ohms 1/8W	T
J373	ERJ8GX0R00V	Chip 0 ohms 1/8W	T
J375	ERJ8GX0R00V	Chip 0 ohms 1/8W	T
J376	ERJ8GX0R00V	Chip 0 ohms 1/8W	T
J377	ERJ8GX0R00V	Chip 0 ohms 1/8W	T
J378	ERJ8GX0R00V	Chip 0 ohms 1/8W	T
J379	ERJ8GX0R00V	Chip 0 ohms 1/8W	T
J380	ERJ8GX0R00V	Chip 0 ohms 1/8W	T
J381	ERJ8GX0R00V	Chip 0 ohms 1/8W	T
J400	ERJ6GEYJ331V	Chip 330 ohms 1/10W	T
J405	ERJ8GX0R00V	Chip 0 ohms 1/8W	T
J406	ERJ8GX0R00V	Chip 0 ohms 1/8W	T
J407	ERJ8GX0R00V	Chip 0 ohms 1/8W	T
J408	ERJ8GX0R00V	Chip 0 ohms 1/8W	T
J409	ERJ8GX0R00V	Chip 0 ohms 1/8W	T
J436	ERJ8GX0R00V	Chip 0 ohms 1/8W	T
J450	ERJ8GX0R00V	Chip 0 ohms 1/8W	T
J451	ERJ8GX0R00V	Chip 0 ohms 1/8W	T
J500	ERJ6GEY0R00V	Chip 0 ohms 1/10W	T
J601	ERJ6GEY0R00V	Chip 0 ohms 1/10W	T
J602	ERJ6GEY0R00V	Chip 0 ohms 1/10W	T
J603	ERJ6GEY0R00V	Chip 0 ohms 1/10W	T
J613	ERJ8GEYJ473V	Chip 47k ohms 1/8W	T
J614	ERJ8GEYJ473V	Chip 47k ohms 1/8W	T
J671	ERJ8GX0R00V	Chip 0 ohms 1/8W	T
J672	ERJ6GEY0R00V	Chip 0 ohms 1/10W	T
J673	ERJ8GX0R00V	Chip 0 ohms 1/8W	T
J674	ERJ8GX0R00V	Chip 0 ohms 1/8W	T
J675	ERJ6GEY0R00V	Chip 0 ohms 1/10W	T
J676	ERJ6GEY0R00V	Chip 0 ohms 1/10W	T
J679	ERJ8GX0R00V	Chip 0 ohms 1/8W	T
J680	ERJ8GX0R00V	Chip 0 ohms 1/8W	T
J681	ERJ6GEY0R00V	Chip 0 ohms 1/10W	T
J888	ERJ6GEY0R00V	Chip 0 ohms 1/10W	T
R50	ERJ6GEYJ5R6V	Chip 5.6 ohms 1/10W	T
R52	ERJ6GEYJ101V	Chip 100 ohms 1/10W	T
R53	ERJ6GEYJ822V	Chip 8.2k ohms 1/10W	T
R54	ERJ6GEYJ333V	Chip 33k ohms 1/10W	T
R55	ERJ6GEYJ102V	Chip 1k ohms 1/10W	T
R56	ERJ6GEYJ153V	Chip 15k ohms 1/10W	T
R57	ERJ6GEYJ123V	Chip 12k ohms 1/10W	T
R58	ERJ6GEYJ123V	Chip 12k ohms 1/10W	T
R102	ERJ6GEYJ152V	Chip 1.5k ohms 1/10W	T
R103	ERJ6GEYJ182V	Chip 1.8k ohms 1/10W	T
R104	ERD25TJ561T	Carbon 560 ohms 1/4W	T
R105	ERJ6GEYJ100V	Chip 10 ohms 1/10W	T
R106	ERJ6GEYJ222V	Chip 2.2k ohms 1/10W	T
R107	ERJ8GEYJ102V	Chip 1k ohms 1/8W	T
R108	ERJ8GEYJ102V	Chip 1k ohms 1/8W	T
R109	ERJ8GEYJ102V	Chip 1k ohms 1/8W	T
R110	ERJ8GEYJ102V	Chip 1k ohms 1/8W	T
R111	ERJ6GEYJ473V	Chip 47k ohms 1/10W	T
R206	ERJ6GEYJ562V	Chip 5.6k ohms 1/10W	T
R207	ERJ6GEYJ562V	Chip 5.6k ohms 1/10W	T
R208	ERD25TJ102T	Carbon 1k ohms 1/4W	T
R209	ERD25TJ102T	Carbon 1k ohms 1/4W	T
R241	ERJ6GEYJ103V	Chip 10k ohms 1/10W	T
R242	ERJ6GEYJ103V	Chip 10k ohms 1/10W	T
R243	ERJ6GEYJ472V	Chip 4.7k ohms 1/10W	T
R244	ERJ6GEYJ123V	Chip 12k ohms 1/10W	T
R263	ERJ6GEY0R00V	Chip 0 ohms 1/10W	T
R264	ERJ6GEY0R00V	Chip 0 ohms 1/10W	T

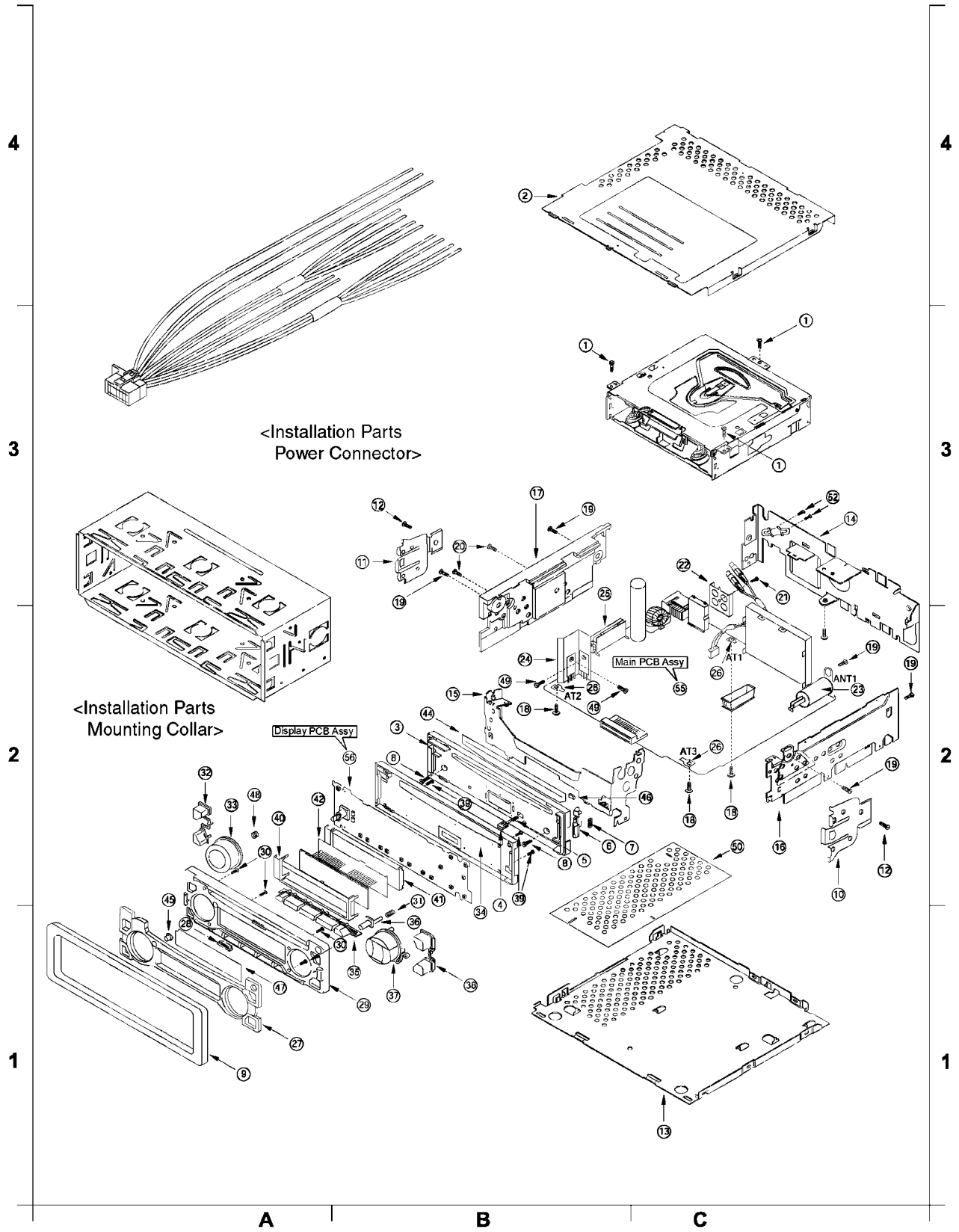
Ref. No.	Part No.	Part Name & Description	Remarks
R271	ERD25TJ561T	Carbon 560 ohms 1/4W	T
R272	ERD25TJ561T	Carbon 560 ohms 1/4W	T
R280	ERJ6GEYJ102V	Chip 1k ohms 1/10W	T
R283	ERJ6GEYJ102V	Chip 1k ohms 1/10W	T
R284	ERJ6GEYJ102V	Chip 1k ohms 1/10W	T
R285	ERJ6GEYJ102V	Chip 1k ohms 1/10W	T
R341	ERJ6GEYJ103V	Chip 10k ohms 1/10W	T
R342	ERJ6GEYJ103V	Chip 10k ohms 1/10W	T
R343	ERJ6GEYJ472V	Chip 4.7k ohms 1/10W	T
R344	ERJ6GEYJ123V	Chip 12k ohms 1/10W	T
R363	ERJ6GEY0R00V	Chip 0 ohms 1/10W	T
R364	ERJ6GEY0R00V	Chip 0 ohms 1/10W	T
R371	ERD25TJ561T	Carbon 560 ohms 1/4W	T
R372	ERD25TJ561T	Carbon 560 ohms 1/4W	T
R400	ERJ6GEYJ393V	Chip 39k ohms 1/10W	T
R401	ERJ8GEYJ274V	Chip 270k ohms 1/8W	T
R500	ERJ6GEYJ102V	Chip 1k ohms 1/10W	T
R501	ERJ8GEYJ102V	Chip 1k ohms 1/8W	T
R502	ERJ8GEYJ102V	Chip 1k ohms 1/8W	T
R503	ERJ8GEYJ473V	Chip 47k ohms 1/8W	T
R504	ERJ8GEYJ473V	Chip 47k ohms 1/8W	T
R505	ERJ8GEYJ473V	Chip 47k ohms 1/8W	T
R506	ERJ8GEYJ102V	Chip 1k ohms 1/8W	T
R507	ERJ6GEYJ102V	Chip 1k ohms 1/10W	T
R508	ERJ6GEYJ102V	Chip 1k ohms 1/10W	T
R509	ERJ8GEYJ102V	Chip 1k ohms 1/8W	T
R600	ERJ6GEYJ473V	Chip 47k ohms 1/10W	T
R601	ERJ6GEYJ473V	Chip 47k ohms 1/10W	T
R602	ERJ6GEYJ473V	Chip 47k ohms 1/10W	T
R603	ERJ6GEYJ473V	Chip 47k ohms 1/10W	T
R604	ERJ6GEYJ472V	Chip 4.7k ohms 1/10W	T
R605	ERJ6GEYJ334V	Chip 330k ohms 1/10W	T
R606	ERJ6GEYJ104V	Chip 100k ohms 1/10W	T
R607	ERJ8GEYJ102V	Chip 1k ohms 1/8W	T
R609	ERJ6GEYJ102V	Chip 1k ohms 1/10W	T
R610	ERJ6GEYJ102V	Chip 1k ohms 1/10W	T
R611	ERJ6GEYJ102V	Chip 1k ohms 1/10W	T
R613	ERJ6GEYJ102V	Chip 1k ohms 1/10W	T
R616	ERJ8GEYJ102V	Chip 1k ohms 1/8W	T
R618	ERJ8GEYJ102V	Chip 1k ohms 1/8W	T
R619	ERJ8GEYJ102V	Chip 1k ohms 1/8W	T
R620	ERJ8GEYJ103V	Carbon 10k ohms 1/8W	T
R621	ERJ8GEYJ103V	Carbon 10k ohms 1/8W	T
R630	ERJ6GEYJ102V	Chip 1k ohms 1/10W	T
R631	ERJ6GEYJ104V	Chip 100k ohms 1/10W	T
R632	ERJ8GEYJ104V	Chip 100k ohms 1/8W	T
R634	ERJ6GEYJ332V	Chip 3.3k ohms 1/10W	T
R635	ERJ8GEYJ102V	Chip 1k ohms 1/8W	T
R636	ERJ8GX0R00V	Chip 0 ohms 1/8W	T
R638	ERJ6GEYJ472V	Chip 4.7k ohms 1/10W	T
R660	ERJ6GEYJ102V	Chip 1k ohms 1/10W	T
R661	ERJ6GEYJ102V	Chip 1k ohms 1/10W	T
R662	ERJ8GEYJ104V	Chip 100k ohms 1/8W	T
R663	ERJ8GEYJ104V	Chip 100k ohms 1/8W	T
R668	ERJ6GEYJ473V	Chip 47k ohms 1/10W	T
R669	ERJ6GEYJ102V	Chip 1k ohms 1/10W	T
R670	ERJ6GEYJ103V	Chip 10k ohms 1/10W	T
R678	ERJ6GEYJ223V	Chip 22k ohms 1/10W	T
R679	ERJ8GEYJ473V	Chip 47k ohms 1/8W	T
R680	ERJ6GEYJ103V	Chip 10k ohms 1/10W	T
R681	ERJ6GEYJ103V	Chip 10k ohms 1/10W	T
R682	ERJ6GEYJ103V	Chip 10k ohms 1/10W	T
R700	ERD25FJ1R0T	Carbon 1 ohms 1/4W	T
R701	ERD25TJ152T	Carbon 1.5k ohms 1/4W	T
R702	ERJ8GEYJ561V	Chip 560 ohms 1/8W	T
R703	ERD25FJ1R0T	Carbon 1 ohms 1/4W	T
R704	ERD25FJ5R6T	Carbon 5.6 ohms 1/4W	T
R705	ERD25TJ221T	Carbon 220 ohms 1/4W	T
R706	ERD25FJ821T	Carbon 820 ohms 1/2W	T
R707	ERD25FJ821T	Carbon 820 ohms 1/2W	T
R708	ERJ8GEYJ473V	Chip 47k ohms 1/8W	T
R709	ERJ8GEYJ330V	Chip 33 ohms 1/8W	T
R710	ERJ8GEYJ562V	Chip 5.6k ohms 1/8W	T

Ref. No.	Part No.	Part Name & Description	Remarks
R737	ERJ6GEYJ273V	Chip 27k ohms 1/10W	T
R770	ERJ6GEYJ103V	Chip 10k ohms 1/10W	T
R771	ERDS2TJ512T	Carbon 5.1k ohms 1/4W	T
R772	ERDS2TJ512T	Carbon 5.1k ohms 1/4W	T
R773	ERJ6GEYJ512V	Chip 5.1k ohms 1/10W	T
R774	ERJ6GEYJ512V	Chip 5.1k ohms 1/10W	T
R776	ERJ8GX0R00V	Chip 0 ohms 1/8W	T
R778	ERJ8GX0R00V	Chip 0 ohms 1/8W	T
R800	ERD25FJ1R0T	Carbon 1 ohms 1/4W	T
R801	ERD25TJ221T	Carbon 220 ohms 1/4W	T
R820	ERJ8GEYJ152V	Carbon 1.5k ohms 1/8W	T
R821	ERJ6GEYJ473V	Chip 47k ohms 1/10W	T
R841	ERJ6GEYJ472V	Chip 4.7k ohms 1/10W	T
R850	ERJ6GEYJ562V	Chip 5.6k ohms 1/10W	T
R860	ERJ6GEYJ562V	Chip 5.6k ohms 1/10W	T
R861	ERJ6GEYJ472V	Chip 4.7k ohms 1/10W	T
R862	ERJ8GEYJ473V	Chip 47k ohms 1/8W	T
R863	ERJ8GEYJ471V	Chip 470 ohms 1/8W	T
DISPLAY BLOCK [E-4C252]			
R901	ERJ6GEYJ4R7V	Chip 4.7 ohms 1/10W	T
R902	ERJ6GEYJ473V	Chip 47k ohms 1/10W	T
R903	ERJ6GEYJ102V	Chip 1k ohms 1/10W	T
R904	ERJ6GEYJ4R7V	Chip 4.7 ohms 1/10W	T
R905	ERJ6GEYJ102V	Chip 1k ohms 1/10W	T
R906	ERJ6GEYJ102V	Chip 1k ohms 1/10W	T
R907	ERJ6GEYJ102V	Chip 1k ohms 1/10W	T
R908	ERJ6GEYJ102V	Chip 1k ohms 1/10W	T
R909	ERJ6GEYJ102V	Chip 1k ohms 1/10W	T
R910	ERJ6GEYJ103V	Chip 10k ohms 1/10W	T
R911	ERJ6GEYJ681V	Chip 680 ohms 1/10W	T
R920	ERJ8GEYJ121V	Chip 120 ohms 1/8W	T
R921	ERJ8GEYJ121V	Chip 120 ohms 1/8W	T
R922	ERJ6GEYJ821V	Chip 820 ohms 1/10W	T
R923	ERJ6GEYJ821V	Chip 820 ohms 1/10W	T
R924	ERJ6GEYJ821V	Chip 820 ohms 1/10W	T
R925	ERJ6GEYJ821V	Chip 820 ohms 1/10W	T
R926	ERJ6GEYJ821V	Chip 820 ohms 1/10W	T
R927	ERJ6GEYJ821V	Chip 820 ohms 1/10W	T
R928	ERJ6GEYJ821V	Chip 820 ohms 1/10W	T
R929	ERJ6GEYJ821V	Chip 820 ohms 1/10W	T
1.5. Connectors			
MAIN BLOCK [E-4C253]			
CN200	YEA4CRCA044	Connect	T
CN500	YEAEB6610001	Connect	T
CN601	YEAEO12475	Connect	T
CN700	K1FA116B0028	Connect	T
CN701	K1KA18A00074	Connect	T
CN900	YEAER140005	Connect	T
CP501	YEA4CDIN023	Connect	T
DISPLAY BLOCK [E-4C252]			
CN901	YEAEO12476	Connect	T
1.6. Electric Parts			
SWITCHES			
SW902	KOH1BA000445	Tack Switch	T
SW903	KOH1BA000445	Tack Switch	T
SW904	KOH1BA000445	Tack Switch	T
SW905	KOH1BA000445	Tack Switch	T
SW906	KOH1BA000445	Tack Switch	T
SW907	KOH1BA000445	Tack Switch	T
SW908	KOH1BA000445	Tack Switch	T
SW909	KOH1BA000445	Tack Switch	T
SW910	KOH1BA000445	Tack Switch	T
SW911	KOH1BA000445	Tack Switch	T
SW912	KOH1BA000445	Tack Switch	T
SW913	KOH1BA000445	Tack Switch	T
SW914	KOH1BA000445	Tack Switch	T
SW915	KOH1BA000445	Tack Switch	T
SW916	KOH1BA000445	Tack Switch	T
SW917	KOH1BA000445	Tack Switch	T
CRYSTAL			
XL100	YEXL4C720TT	Crystal ( 7.2MHz )	T
XL600	YEXL4C12M5T	Crystal ( 12.50mhz)	T
XL601	YEXL4C32768T	Crystal (32.768KHz)	T

Ref. No.	Part No.	Part Name & Description	Remarks
COILS			
L50	YELT02C330KT	Axial Coil	T
L60	YELTR56MT	Coil (Chip)	T
L100	YELT02C101KT	Axial Coil	T
L700	YETQ024C055V	Choke Coil	T
VR			
VR901	K9AA024A0007	ENCODE VR	T
LCD			
LCD901	YEXDCM4C101	LCD	T
POSISTOR			
PT700	YERT7AR4R7MT	Posistor	T
Accessories			
	YFM284C375ZA	Operating Instructions	T
1.7. INSTALLATION PARTS			
	YFC054C061ZA	Removable Front Panel Case	T
	YEAJ02877	Power Connector	T
	YFG044C002ZA	Rear Support Strap	T
	ZZBISDP103U	Screw Kit	T
	YEFX9992663	Remote Controller	T
	YBAB99-0022	Battery	T
	FX0214C316ZA	Mounting Collar	T
1.8. Mechanical Parts			
MISCELLANEOUS			
ANT1	YAA104C700ZA	ANT Jack	T(2-C)
1	YJT034C035ZA	Screw	T(3-C)
2	YFA034C044ZA	Upper Cover	T(4-C)
3	YFC024C593ZA	Esc Holder (CD)	T(2-B)
4	YFE134C440ZA	Push Button	T(2-B)
5	FX0054C058ZA	Spring (push button)	T(2-B)
6	YEFX9991682A	Release Hook	T(2-B)
7	FX0054C049ZA	Spring (Hook)	T(2-B)
8	YJT034C015CA	Step Screw	T(2-B)
9	YFC054C058ZA	Trim Plate(print)	T(1-A)
10	YFX054C051ZA	Spring Plate(R)	T(2-C)
11	YFX054C052ZA	Spring Plate(L)	T(3-B)
12	XTB3+6FFXS	Screw	T(2-C) T(3-B)
13	YFA054C036YA	Bottom Cover	T(1-C)
14	YFA084C039ZA	Rear Plate	T(3-C)
15	YFA074C045ZA	Front Plate	T(2-B)
16	YFA094C091ZA	Right Plate	T(2-C)
17	YFF014C047ZA	Heat Sink	T(3-B)
18	YBJT034C001	Screw	T(2-B) T(2-C)
19	XTB3+6FFXS	Screw	T(2-C) T(3-B)
20	YBJT034C019	Screw(cup tight 3x12)	T(3-B)
21	XTB26+8G	Screw	T(3-C)
22	FX0214C319ZA	RCA Jack Bracket	T(3-C)
24	FX0214C322ZA	Tr BKT	T(2-B)
25	FX0214C276ZA	IC Bracket	T(2-B)
27	YFJ014C097ZA	Ornament Panel(print)	T(1-A)
28	YFX014C071ZA	Panel Light (CD)	T(1-A)
29	YFC024C591ZA	Esc Front Cover	T(1-A)
30	XTB2+4PFZ	Screw (panel)	T(1-A)
31	FX0054C055ZA	Spring (open)	T(1-B)
32	YFE134C422ZA	Button (band/src)	T(2-A)
33	YFE074C057ZA	Vol Knob	T(2-A)
34	YFC024C592ZA	Esc Rear Cover	T(2-B)
35	YFE134C420ZA	Button(preset)	T(1-B)
36	YFE134C419ZA	Button (release)	T(1-B)
37	YFE134C424ZA	Button (tune/track)	T(1-B)
38	YFE134C421ZA	Button (ej/disp)	T(1-B)
39	XTN2+8GFZ	Screw (Esc)	T(2-B)
40	YFX214C315YA	LCD Bracket	T(2-B)
41	YEFX0012300	Back Light Assy	T(2-B)
42	YFV024C080ZA	Sheet (LCD)	T(2-B)
44	YEF502302	Dust Felt	T(2-B)
45	YFJ014C091ZA	Sensor Cap	T(1-A)
46	YEF5011113	Pad	T(2-B)
47	YFV024C078ZA	Sheet (panel)	T(1-A)
48	YFX054C053ZA	Spring (knob)	T(2-A)
49	YJS064C002ZA	Screw (m3x8)	T(2-B)


Ref. No.	Part No.	Part Name & Description	Remarks
50	YFV014C068ZA	Sheet	T(1-C)
52	XSB3+6FXS	Screw	T(3-C)
55	YEAP4C253	Main PCB Assy	T(2-C)/RTL
56	YEAP4C252	Display PCB Assy	T(3-C)/RTL

# 14 EXPLODED VIEW (Unit)



# 15 CD PLAYER PARTS LIST

## Note:

1. Be sure to make your orders of replacement parts according to this list.
  2. Important safety notice: Component, identified by  mark have special characteristics important for safety. when replacing any of these components, use only manufacturer's specified parts.
  3. Location keys in the remarks column indicates the general location of the parts shown in the exploded drawing, as in a load map.
  4. The marking (RTL) indicates that Retention Time is limited for this item. After the discontinuation of assembly in production, the item will continue to be availability is dependent on the type of assembly, and in accordance with the laws governing part and product retention. At the end of this period, the assembly will no longer be available.
- Order intake period is basically six months after the first shipment

Ref. No.	Part No.	Part Name & Description	Remarks
[3032-14-02] CD Servo Block			
IC's and TRANSISTORS			
IC201	MN6627482WB	IC	
IC202	YESAM163	IC	
IC203	YESAM166	IC	
IC204	C0ABBB000073	IC	
IC401	YESAM176	IC	
IC402	YESAM172	IC	
IC406	YESAM171	IC	
IC409	YESAM167	IC	
IC411	YESAM178	IC	
Q101	B1BDBC000001	Transistor	
Q201	B1BDBC000001	Transistor	
Q203	YESAN060	Transistor	
CAPACITORS			
C101	YESCC203	Chip, 220pF 50WV	
C102	YESCC187	Chip, 0.1MFD 25WV	
C103	YESCC187	Chip, 0.1MFD 25WV	
C104	YESCC206	Chip, 0.047MFD 25WV	
C105	F1H1H2220004	Chip, 0.0047MFD 25WV	
C106	YESCC207	Chip, 0.001MFD 50WV	
C107	YESCC206	Chip, 0.047MFD 25WV	
C108	YESCC204	Chip, 330pF 50WV	
C109	YESCC187	Chip, 0.1MFD 25WV	
C110	YESCC187	Chip, 0.1MFD 25WV	
C111	YESCC186	Chip, 0.022MFD 50WV	
C112	YESCC183	Chip, 0.0022MFD 50WV	
C113	YESCC208	Chip, 0.0015MFD 50WV	
C114	YESCC207	Chip, 0.001MFD 50WV	
C115	YESCC187	Chip, 0.1MFD 25WV	
C116	YESCC187	Chip, 0.1MFD 25WV	
C121	YESCC187	Chip, 0.1MFD 25WV	
C122	YESCC207	Chip, 0.001MFD 50WV	
C123	YESCC186	Chip, 0.022MFD 50WV	
C124	YESCC187	Chip, 0.1MFD 25WV	
C125	YESCC207	Chip, 0.001MFD 50WV	
C126	YESCC210	Chip, 1MFD 16WV	
C127	YESCC207	Chip, 0.001MFD 50WV	
C128	YESCC205	Chip, 0.22MFD 10WV	
C129	YESCC187	Chip, 0.1MFD 25WV	
C130	YESCC207	Chip, 0.001MFD 50WV	
C131	YESCC187	Chip, 0.1MFD 25WV	
C132	YESCC187	Chip, 0.1MFD 25WV	
C135	YESCC187	Chip, 0.1MFD 25WV	
C136	YESCC187	Chip, 0.1MFD 25WV	
C137	YESCC210	Chip, 1MFD 16WV	
C138	YESCC210	Chip, 1MFD 16WV	

Ref. No.	Part No.	Part Name & Description	Remarks
C139	YESCC187	Chip, 0.1MFD 25WV	
C140	YESCC187	Chip, 0.1MFD 25WV	
C141	YESCC187	Chip, 0.1MFD 25WV	
C151	YESCC188	Electrolytic, 10MFD 16WV	
C152	YESCC213	Electrolytic, 22MFD 6.3WV	
C153	YESCC213	Electrolytic, 22MFD 6.3WV	
C154	YESCC215	Electrolytic, 220MFD 10WV	
C203	YESCC209	Chip, 0.0033MFD 50WV	
C204	YESCC209	Chip, 0.0033MFD 50WV	
C205	YESCC187	Chip, 0.1MFD 25WV	
C207	YESCC187	Chip, 0.1MFD 25WV	
C208	YESCC202	Chip, 22pF 50WV	
C251	YESCC215	Electrolytic, 220MFD 10WV	
C252	YESCC214	Electrolytic, 47MFD 6.3WV	
C253	YESCC215	Electrolytic, 220MFD 10WV	
C301	YESCC207	Chip, 0.001MFD 50WV	
C302	YESCC207	Chip, 0.001MFD 50WV	
C311	YESCC207	Chip, 0.001MFD 50WV	
C312	YESCC207	Chip, 0.001MFD 50WV	
C321	YESCC187	Chip, 0.1MFD 25WV	
C356	YESCC213	Electrolytic, 22MFD 6.3WV	
C357	YESCC214	Electrolytic, 47MFD 6.3WV	
C358	YESCC213	Electrolytic, 22MFD 6.3WV	
C359	YESCC216	Electrolytic, 100MFD 16WV	
C360	YESCC188	Electrolytic, 10MFD 16WV	
C401	YESCC187	Chip, 0.1MFD 25WV	
C402	YESCC187	Chip, 0.1MFD 25WV	
C403	YESCC187	Chip, 0.1MFD 25WV	
C404	YESCC187	Chip, 0.1MFD 25WV	
C405	YESCC187	Chip, 0.1MFD 25WV	
C406	YESCC188	Chip, 0.1MFD 26WV	
C407	YESCC189	Chip, 0.1MFD 27WV	
C408	YESCC190	Chip, 0.1MFD 28WV	
C409	YESCC187	Chip, 0.1MFD 25WV	
C410	YESCC187	Chip, 0.1MFD 25WV	
C411	YESCC188	Chip, 0.1MFD 26WV	
C412	YESCC189	Chip, 0.1MFD 27WV	
C413	YESCC190	Chip, 0.1MFD 28WV	
C414	YESCC191	Chip, 0.1MFD 29WV	
C418	YESCC187	Chip, 0.1MFD 25WV	
C426	YESCC187	Chip, 0.1MFD 25WV	
C433	YESCC210	Chip, 1MFD 16WV	
C434	YESCC210	Chip, 1MFD 16WV	
C435	YESCC187	Chip, 0.1MFD 25WV	
C436	YESCC187	Chip, 0.1MFD 25WV	
C437	YESCC210	Chip, 1MFD 16WV	
C452	YESCC188	Electrolytic, 10MFD 16WV	
C463	YESCC214	Electrolytic, 47MFD 6.3WV	
C464	YESCC214	Electrolytic, 47MFD 6.3WV	
R435	YESCC187	Chip, 0.1MFD 25WV	
RESISTORS			
JP101	ERJ8GEY0R00V	Chip, 0 ohms 1/8W	
JP102	ERJ8GEY0R00V	Chip, 0 ohms 1/8W	
L302	ERJ6GEY0R00	Chip, 0 ohms 1/10W	
L303	ERJ6GEY0R00	Chip, 0 ohms 1/10W	
L304	ERJ6GEY0R00	Chip, 0 ohms 1/10W	
L305	ERJ6GEY0R00	Chip, 0 ohms 1/10W	
R101	ERJ3GEYJ4R7V	Chip, 4.7 ohms 1/16W	
R103	ERJ3GEYJ152V	Chip, 1.5k ohms 1/16W	
R104	ERJ3GEYJ471V	Chip, 470 ohms 1/16W	
R105	ERJ3GEYJ272V	Chip, 2.7k ohms 1/16W	
R106	ERJ3GEYJ103V	Chip, 10k ohms 1/16W	
R107	ERJ3GEYJ272V	Chip, 2.7k ohms 1/16W	
R108	ERJ3GEYJ394V	Chip, 390k ohms 1/16W	
R109	ERJ3GEYJ154V	Chip, 150k ohms 1/16W	
R110	ERJ3GEYJ103V	Chip, 10k ohms 1/16W	
R111	ERJ3GEYJ183V	Chip, 18k ohms 1/16W	
R112	ERJ3GEYJ244V	Chip, 240k ohms 1/16W	
R113	ERJ3GEYJ124V	Chip, 120k ohms 1/16W	

Ref. No.	Part No.	Part Name & Description	Remarks
R114	ERJ3GEY0R00V	Chip, 0 ohms 1/16W	
R115	ERJ3GEYJ222V	Chip, 2.2k ohms 1/16W	
R116	ERJ3GEYJ222V	Chip, 2.2k ohms 1/16W	
R117	ERJ3GEY0R00V	Chip, 0 ohms 1/16W	
R118	ERJ3GEYJ153V	Chip, 15k ohms 1/16W	
R119	ERJ3GEYJ102V	Chip, 1k ohms 1/16W	
R120	ERJ3GEY0R00V	Chip, 0 ohms 1/16W	
R121	ERJ3GEYJ224V	Chip, 240k ohms 1/16W	
R122	ERJ3GEYJ563V	Chip, 56k ohms 1/16W	
R123	ERJ3GEYJ124V	Chip, 120k ohms 1/16W	
R125	ERJ3GEYJ471V	Chip, 470 ohms 1/16W	
R126	ERJ3GEYJ272V	Chip, 2.7k ohms 1/16W	
R127	RK1J224JT	Chip, 220 ohms 1/10W	
R128	ERJ3GEYJ221V	Chip, 220 ohms 1/16W	
R129	ERJ3GEYJ682V	Chip, 6.8k ohms 1/16W	
R130	ERJ3GEYJ105V	Chip, 1M ohms 1/16W	
R131	ERJ3GEYJ222V	Chip, 2.2k ohms 1/16W	
R133	ERJ3GEYJ222V	Chip, 2.2k ohms 1/16W	
R136	ERJ3GEYJ222V	Chip, 2.2k ohms 1/16W	
R137	ERJ3GEYJ102V	Chip, 1k ohms 1/16W	
R138	ERJ3GEYJ102V	Chip, 1k ohms 1/16W	
R139	ERJ3GEYJ102V	Chip, 1k ohms 1/16W	
R140	ERJ3GEYJ102V	Chip, 1k ohms 1/16W	
R141	ERJ3GEYJ102V	Chip, 1k ohms 1/16W	
R142	ERJ3GEYJ102V	Chip, 1k ohms 1/16W	
R201	ERJ3GEYJ682V	Chip, 6.8k ohms 1/16W	
R202	ERJ3GEY0R00V	Chip, 0 ohms 1/16W	
R204	ERJ3GEYJ102V	Chip, 1k ohms 1/16W	
R205	ERJ3GEY0R00V	Chip, 0 ohms 1/16W	
R206	ERJ3GEYJ183V	Chip, 18k ohms 1/16W	
R207	ERJ3GEYJ512V	Chip, 5.1k ohms 1/16W	
R208	ERJ3GEY0R00V	Chip, 0 ohms 1/16W	
R209	ERJ3GEYJ512V	Chip, 5.1k ohms 1/16W	
R210	ERJ3GEY0R00V	Chip, 0 ohms 1/16W	
R211	ERJ3GEYJ273V	Chip, 27k ohms 1/16W	
R212	ERJ3GEYJ473V	Chip, 47k ohms 1/16W	
R301	ERJ3GEYJ392V	Chip, 3.9k ohms 1/16W	
R302	ERJ3GEYJ392V	Chip, 3.9k ohms 1/16W	
R303	ERJ3GEYJ153V	Chip, 15k ohms 1/16W	
R304	ERJ3GEYJ103V	Chip, 10k ohms 1/16W	
R305	RK1J221JT	Chip, 220 ohms 1/10W	
R311	ERJ3GEYJ392V	Chip, 3.9k ohms 1/16W	
R312	ERJ3GEYJ392V	Chip, 3.9k ohms 1/16W	
R313	ERJ3GEYJ153V	Chip, 15k ohms 1/16W	
R314	ERJ3GEYJ103V	Chip, 10k ohms 1/16W	
R315	ERJ3GEYJ221V	Chip, 220 ohms 1/16W	
R322	ERJ3GEYJ103V	Chip, 10k ohms 1/16W	
R323	ERJ3GEYJ103V	Chip, 10k ohms 1/16W	
R324	ERJ3GEYJ104V	Chip, 100k ohms 1/16W	
R325	ERJ3GEYJ104V	Chip, 100k ohms 1/16W	
R326	ERJ3GEYJ101V	Chip, 100 ohms 1/16W	
R327	ERJ3GEYJ103V	Chip, 10k ohms 1/16W	
R328	ERJ3GEYJ103V	Chip, 10k ohms 1/16W	
R329	ERJ3GEYJ102V	Chip, 1k ohms 1/16W	
R401	ERJ3GEYJ103V	Chip, 10k ohms 1/16W	
R402	ERJ3GEYJ103V	Chip, 10k ohms 1/16W	
R403	ERJ3GEYJ103V	Chip, 10k ohms 1/16W	
R404	ERJ3GEYJ103V	Chip, 10k ohms 1/16W	
R408	ERJ3GEYJ472V	Chip, 4.7k ohms 1/16W	
R409	ERJ3GEYJ472V	Chip, 4.7k ohms 1/16W	
R414	ERJ3GEYJ473V	Chip, 47k ohms 1/16W	
R415	ERJ3GEYJ473V	Chip, 47k ohms 1/16W	
R416	ERJ3GEYJ473V	Chip, 47k ohms 1/16W	
R425	ERJ3GEYJ101V	Chip, 100 ohms 1/16W	
R428	ERJ3GEYJ330V	Chip, 33 ohms 1/16W	
R429	ERJ3GEYJ221V	Chip, 220 ohms 1/16W	
R430	ERJ3GEYJ561V	Chip, 560 ohms 1/16W	
R431	ERJ3GEYJ472V	Chip, 4.7k ohms 1/16W	
R432	ERJ3GEYJ103V	Chip, 10k ohms 1/16W	
R434	ERJ3GEYJ104V	Chip, 100k ohms 1/16W	
R478	ERJ3GEYJ560V	Chip, 56 ohms 1/16W	
R480	ERJ3GEYJ560V	Chip, 56 ohms 1/16W	
R481	ERJ3GEYJ472V	Chip, 4.7k ohms 1/16W	

Ref. No.	Part No.	Part Name & Description	Remarks
R482	ERJ3GEYJ222V	Chip, 2.2k ohms 1/16W	
R483	ERJ3GEYJ222V	Chip, 2.2k ohms 1/16W	
RESISTOR NETWORKs			
RA401	YESXA003	Resistor Network	
RA402	YESXA003	Resistor Network	
RA403	YESXA003	Resistor Network	
RA405	YESXA003	Resistor Network	
RA406	YESXA003	Resistor Network	
RA407	YESXA003	Resistor Network	
RA408	YESXA003	Resistor Network	
RA409	YESXA003	Resistor Network	
RA410	YESXA003	Resistor Network	
RA412	YESXA002	Resistor Network	
RA413	YESXA003	Resistor Network	
RA414	YESXA002	Resistor Network	
CRYSTAL			
X401	YESXL018	Crystal OSC	
COILs			
L301	YESLQ011	Coil	
L401	YESLQ014	Coil	
L402	YESLQ014	Coil	
L403	YESLQ014	Coil	
CONNECTORS			
CN101	YESAB345	Connector 18P	
CN102	K1MN16B00036	FFC/FPC Connector 16P	
MECHANICAL PARTS			
MISCELLANEOUS			
1	YERFA01001	Frame M	T(E-4)
2	YERFA01002	Top cover M	T(A-4)
3	YERFS04003	Damper F	T(E-3)
4	YERFS04004	Damper R	T(D-4)
11	YERFA01005	Chassis Rivet S Ass'y (M)	T(B-2)
12	YERFX046001	Change Plate Rivet Ass'y (M)	T(C-4)
13	YERFX007001	Clamper Ass'y	T(B-3)
14	YERAR0001	Spindle Motor (M) Ass'y	T(D-1)
15	YERFX046002	Clamper Arm M	T(B-4)
16	YERFX005001	Change Gear Spring	T(D-4)
17	YERFX03001	Change Gear 2	T(D-4)
18	YERFX03002	Feed Gear	T(D-3)
19	YERFX03003	Feed Rack M	T(B-1)
20	YERFX046003	Change Lock Lever M	T(D-3)
21	YERFW04001	Feed SW Holder (M)	T(C-1)
22	YERFW04002	PU Shaft Holder (M)	T(B-1); T(B-2)
23	YERFX005002	Clamper Sub Spring	T(B-3)
24	YERFW04003	FD Sub Holder M	T(B-1)
25	YERFA01006	Top Plate S	T(B-2)
26	YERFX046004	Select Lock Arm	T(A-1)
27	YERFX046005	Trigger Arm M	T(C-4)
28	YERFX046006	Slide Hook	T(C-4)
29	YERFW01001	PU Shaft M	T(B-1)
30	YERFX005003	Clamper Arm Spring M	T(B-4)
31	YERFX005004	Select Lock Arm Spring	T(A-1)
32	YERFX005013	Suspension Spring MS	T(B-3); T(C-1); T(C-4); T(D-2)
33	YERFX046007	Select Arm R	T(A-2)
34	YERFX03004	Link Plate	T(A-2)
35	YESFX005137	Link Plate Spring	T(A-2)
36	YERFS01001	Cushion F	T(A-1)
37	YERFS01002	Cushion R	T(B-4)
38	YERFX005014	Feed SPR Plate M	T(C-2)
43	YERFX046008	Select Plate L	T(A-1)
44	YERFX046009	Select Plate R	T(A-2)
45	YERFX046010	Select Piece L	T(A-1)
46	YERFX046011	Select Piece R	T(A-2)
61	YESSZCDM002	Pick Up RD-DAP005-TN	T(B-1)
62	YERAS0001	DET SW ESE 22MH55	T(C-1)

Ref. No.	Part No.	Part Name & Description	Remarks
71	YESAP255	Servo PCB Ass'y	T(E-2)/RTL
72	YERAS0002	Mode SW	T(A-1)
73	YESAJ02015	LD Wire MS	T(B-3); T(C-1)
74	YESAJ02013	SW Wire S	T(A-1)
75	YESAJ02012	SP Wire S	T(D-2)
77	YERFX999001	Wire Clamper M	T(C-2); T(C-3); T(D-4); T(E-3)
78	YESFX024021	Wire Tube SPM	T(D-2)
79	YESFX024022	Wire Tube MSW	T(A-1)
81	YERFX03005	Roller Shaft Ass'y	T(E-2)
82	YERFX046012	Loading Gear Plate Rivet Ass'y	T(D-2)
83	YERFX046013	Loading Plate Ass'y	T(C-4)
84	YERFX046014	Lock Arm Rivet Ass'y	T(E-1)
85	YERAK0002	Loading/Feed Motor Ass'y(MB)	T(B-3)
86	YERFX03006	Loading Gear 1	T(D-4)
87	YERFX03007	Loading Gear 2	T(D-3)
88	YERFX03008	Loading Gear 3	T(D-3)
89	YERFX03009	Loading Gear 4	T(D-2)
90	YERFX03010	Loading Gear 5	T(D-2)
91	YERFX03011	Loading Gear 6	T(D-2)
92	YERFX03012	Loading Gear 7	T(D-3)
93	YERFW04004	Roller Guide	T(D-1); T(E-3)
94	YERFX005007	Roller Guide Spring	T(D-1); T(E-1)
95	YERFX046015	Disc Stopper Arm	T(C-1)
96	YERFX005008	Disc Stop Arm Spring	T(D-2)
97	YERFX046016	LD Gear Bracket	T(D-2)
98	YESFX046133	L Slide Plate	T(D-4)
99	YERFX005009	Loading Plate Spring	T(C-4)
100	YESFX046136	LDG Roller	T(D-1)
101	YERJS01001	PK Collar Screw A	T(E-1)
111	YERJT01001	Tapping Screw 2~3	T(A-3); T(B-3); T(B-4); T(D-2); T(E-4)
112	YERJT01002	Tapping Screw 2~4	T(B-1); T(B-2)
113	YERJT03117	Tapping Bind Screw 2~4	T(D-2)
114	YERJS01002	Camera Screw 1.7~1.8	T(B-2)
115	YERJS01003	Camera Screw 2~2	T(C-3)
116	YERJS01004	Camera Tapping Screw P3 M1.7~5	T(C-1)
117	YESJT03070	Tapping Screw (Metal) 2.0~4.0	T(E-1); T(E-2)
121	YERJW01001	PW 3.5~8~0.3	T(D-4)
122	YERJW01002	HLW 1.85~5~0.13	T(D-1)
123	YERJW01003	Lumilar Washer 3.1~6~0.1	T(D-1)
124	YEJE01028	E Ring S 1.5	T(D-4)
125	YERJW01005	PW 2.1~4~0.13	T(D-3)



# 16 EXPLODED VIEW (CD Deck)

