

## LOW VOLTAGE AUDIO POWER AMPLIFIER

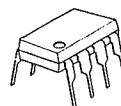
## ■ GENERAL DESCRIPTION

The NJM386B is wider operating voltage and higher output power version of NJM386. The maximum operating voltage is 18V, and the maximum output power is up to 1W.

## ■ FEATURES

- Operating Voltage (4V~18V)
- Minimum External Components
- Low Operating Current (5mA)
- Voltage Gain (20~200)
- Single Supply Operation
- Self-centering of Output Offset Voltage
- Package Outline DIP8, SIP8, DMP8
- Bipolar Technology

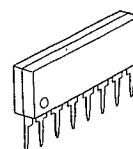
## ■ PACKAGE OUTLINE



NJM386BD



NJM386BM

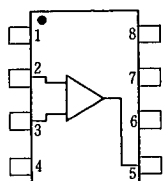
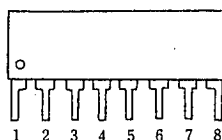


NJM386BL

## ■ APPLICATIONS

- AM-FM radio amplifiers
- Portable tape player amplifiers
- Intercoms
- TV sound systems
- Line drivers
- Ultra-sonic Drivers
- Small servo drivers
- Power converters

## ■ PIN CONFIGURATION

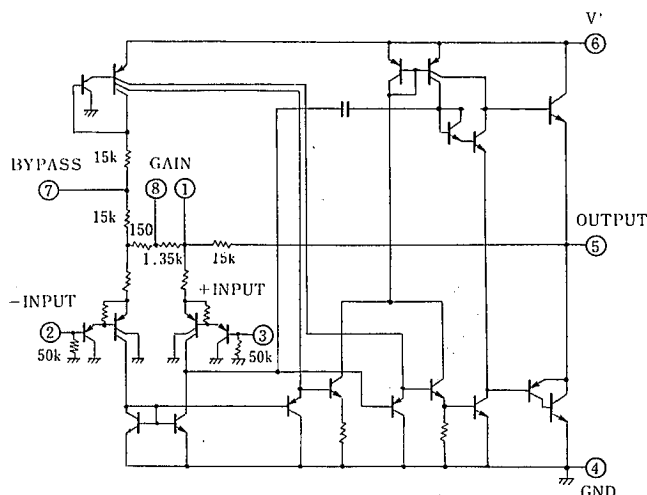
NJM386BD  
NJM386BM

NJM386BL

## PIN FUNCTION

1. GAIN
2. -INPUT
3. +INPUT
4. GND
5. OUTPUT
6. V<sup>+</sup>
7. BY PASS
8. GAIN

## ■ EQUIVALENT CIRCUIT



## ■ ABSOLUTE MAXIMUM RATINGS

(Ta=25°C)

| PARAMETER                   | SYMBOL           | RATINGS     | UNIT |
|-----------------------------|------------------|-------------|------|
| Supply Voltage              | V <sup>+</sup>   | 22          | V    |
| Power Dissipation           | P <sub>D</sub>   | (DIP-8) 700 | mW   |
|                             |                  | (SIP-8) 800 | mW   |
|                             |                  | (DMP-8) 300 | mW   |
| Input Voltage Range         | V <sub>IN</sub>  | ±0.4        | V    |
| Operating Temperature Range | T <sub>opr</sub> | -40 ~ +85   | °C   |
| Storage Temperature Range   | T <sub>stg</sub> | -40 ~ +125  | °C   |

## ■ ELECTRICAL CHARACTERISTICS

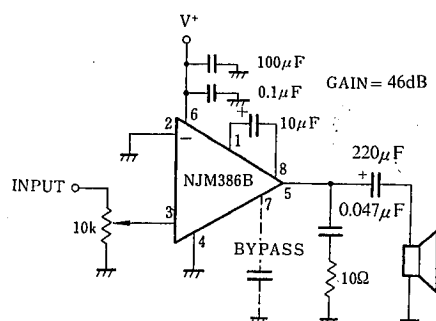
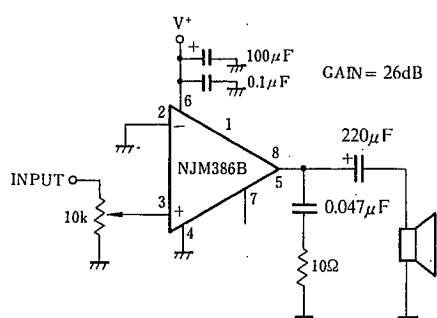
(Ta=25°C)

| PARAMETER                    | SYMBOL          | TEST CONDITION   | MIN. | TYP. | MAX. | UNIT |
|------------------------------|-----------------|--|------|------|------|------|
| Operating Voltage            | V <sup>+</sup>  |  | 4    | —    | 18   | V    |
| Operating Current            | I <sub>CC</sub> | V <sup>+</sup> =6V, V <sub>IN</sub> =0   | —    | 5    | 8    | mA   |
| Output Power                 | P <sub>O</sub>  | V <sup>+</sup> =6V, R <sub>L</sub> =8Ω, THD=10%  | 250  | 325  | —    | mW   |
|                              |                 | V <sup>+</sup> =9V, R <sub>L</sub> =8Ω, THD=10% (note 2)                                     | 500  | 850  | —    | mW   |
|                              |                 | V <sup>+</sup> =16V, R <sub>L</sub> =32Ω, THD=10% (note 1)                                   | 700  | 1000 | —    | mW   |
| Voltage Gain                 | A <sub>V</sub>  | V <sub>S</sub> =6V, f=1kHz   | 24   | 26   | 28   | dB   |
|                              |                 | 10μF from Pin 1 to 8   | 43   | 46   | 49   | dB   |
| Bandwidth                    | BW              | V <sup>+</sup> =6V, Pins 1 and 8 Open  | —    | 600  | —    | kHz  |
| Total Harmonic Distortion    | THD             | V <sup>+</sup> =6V, R <sub>L</sub> =8Ω, P <sub>OUT</sub> =125mV<br>f=1kHz, Pins 1 and 8 Open | —    | 0.1  | —    | %    |
| Power supply Rejection Ratio | SVR             | V <sup>+</sup> =6V, f=1kHz, C <sub>BYPASS</sub> =10μF<br>Pins 1 and 8 Open                   | —    | 50   | —    | dB   |
| Input Resistance             | R <sub>IN</sub> |  | —    | 50   | —    | kΩ   |
| Input Bias Current           | I <sub>B</sub>  | V <sup>+</sup> =6V, Pins 2 and 3 Open  | —    | 100  | —    | nA   |

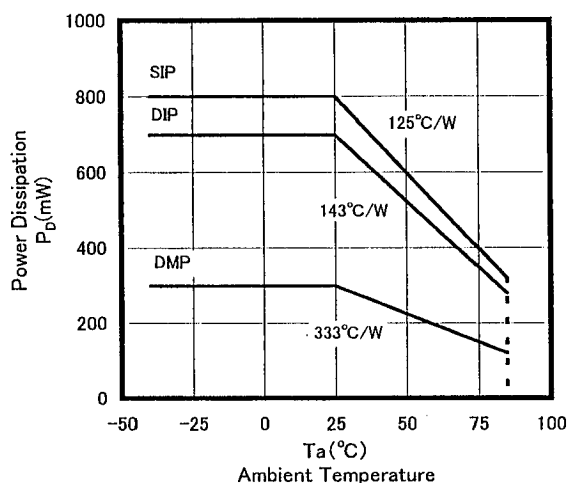
(note 1) NJM386BM: At on Board

(note 2) NJM386BS: At on Board

## ■ TYPICAL APPLICATION



## ■ POWER DISSIPATION VS. AMBIENT TEMPERATURE



## ■ NOTICE WHEN APPLICATION

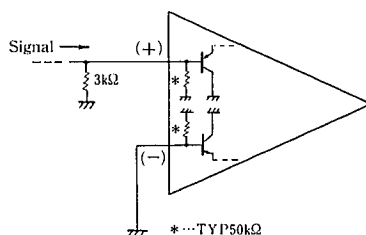
### • Prevention of Oscillation

It is recommended to insert capacitors at around the supply source and the GND pins with the value of  $0.1\mu\text{F}$  and more than  $100\mu\text{F}$  which are featuring higher frequency efficiency.

When the speaker load condition, it is recommendable to insert the resistor of  $10\Omega$  and the capacitor of  $0.047\mu\text{F}$  between the output and the GND pins.

### • How to use the Input Resistor (TYP. $50\text{k}\Omega$ )

The input resistors have much deviation in value generally, so that it is recommended not to use them as the constant of the circuit. The countermeasure to be recommended is to apply the resistor of higher in value, which is so higher to be able to ignore the input deviation ( $3\text{k}\Omega$  approximately) in parallel application.



### • Maintenance of Output Offset Voltage

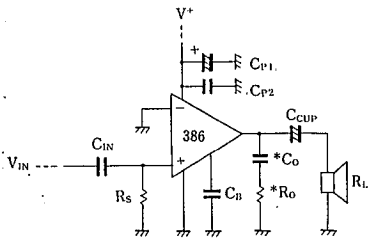
By making connection of both input pins with low value (below  $10\text{k}\Omega$  approximately) to GND, the output offset voltage is automatically set in the medium range value of the supply source. However, the DC Gain of NJM386 is approximately at 20 times in value, so that when keeping one side input pin open, and the other side to GND on DC condition. The voltage drop caused by input resistor  $\times$  input bias current, that is, (input resistor  $\times$  input bias current)  $\times$  20 times voltage is to be sheared, which in the result, no distortion output Oscillation range shall be decreased.

In regard to dealing with the input pin, it is recommendable to put the input pin into the GND at first, and the other side of signal input pin, to be connected into GND with the resistor of less than about  $10\text{k}\Omega$  on DC condition.

• The Application Purpose and Recommended Value of the External Parts.

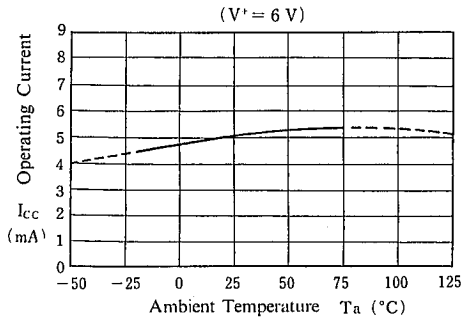
| EXTERNAL PARTS | APPLICATION PURPOSE                                    | RECOMMENED VALUE   | REMARKS   |
|----------------|--|--|---|
| $R_S$          | Current like noise reduction<br>$V_{OQ}$ stabilization | Below $10k\Omega$  | The noise becomes high when the input pin open.   |
| $C_{IN}$       | $V_{OQ}$ stabilization                                 | $1\mu F$   | It is not required in case when there is no DC offset in the input signal.  |
| $C_{P1}$       | $V^+$ stabilization                                    | $\cong C_{cup}$  | It can be decreased in value when the output impedance source is low.   |
| $C_{P2}$       | Oscillation prevention                                 | $0.1\mu F$   | Insert near around the supply source and GND pins.  |
| $C_V$          | Ripple rejection to $V_O$ by way of $V^+$              | $47\mu F$  | It is not required when the $V^+$ is stabilized.  |
| $*C_O$         | Oscillation prevention                                 | $0.047\mu F$   | To be decided in value according to load condition.   |
| $*R_O$         | Oscillation prevention                                 | $10\Omega$   | To be decided in value according to load condition.   |
| $C_{CUP}$      | Output DC decoupling                                   | $470\mu F$ when $R_L = 4\Omega$<br>$220\mu F$ when $R_L = 8\Omega$ | Low band cutoff frequency ( $f_L$ ) shall be decided by $C_{CUP} R_L$ .<br>When $C_{CUP}$ is less in value, $f_L$ is to be increased. |

NJM386B Recommended Circuit

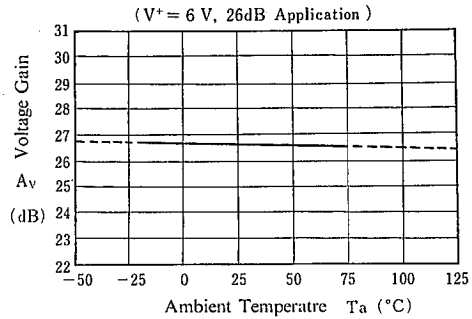


## ■ TYPICAL CHARACTERISTICS

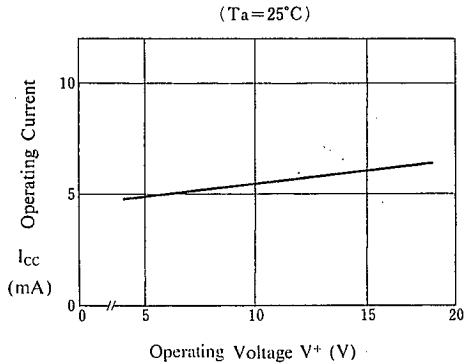
Operating Current vs. Temperature



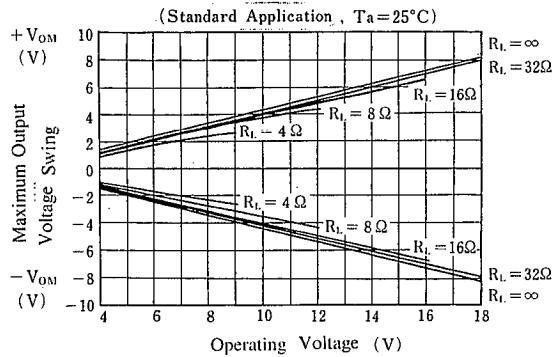
Voltage Gain vs. Temperature



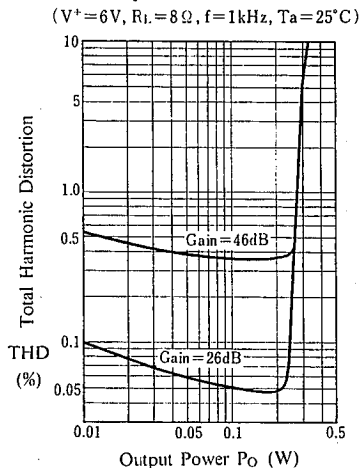
Operating Current vs. Operating Voltage



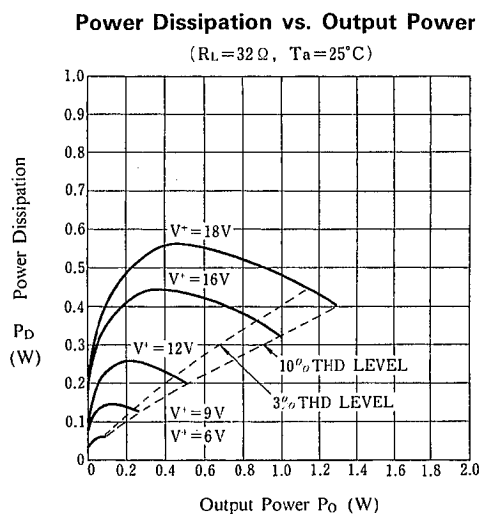
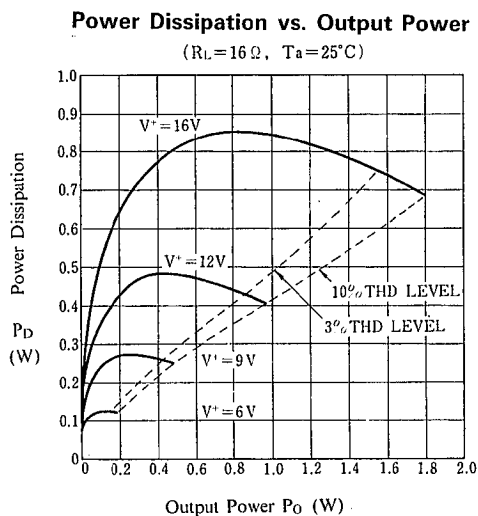
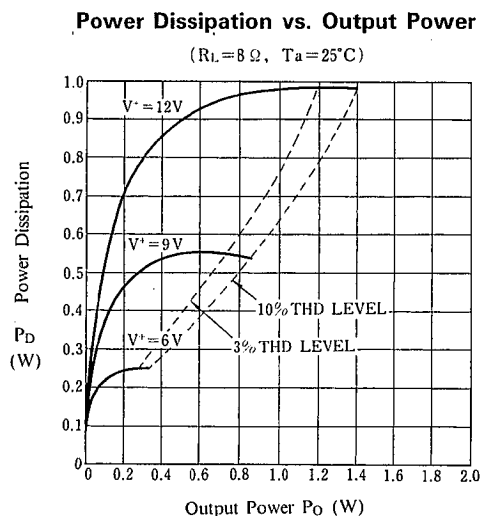
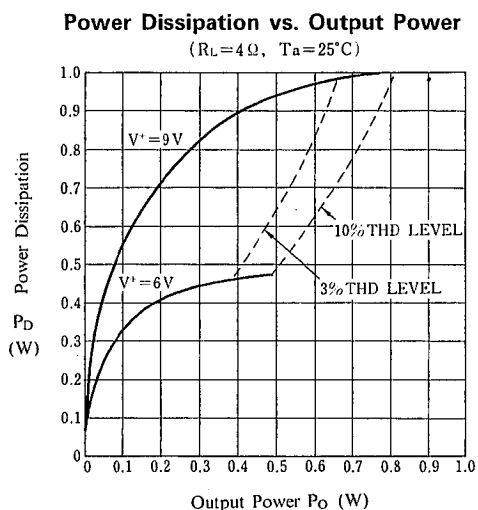
Maximum Output Voltage Swing vs. Operating Voltage



Total Harmonic Distortion vs. Output Power



■ TYPICAL CHARACTERISTICS



## MEMO

**[CAUTION]**

The specifications on this databook are only given for information, without any guarantee as regards either mistakes or omissions. The application circuits in this databook are described only to show representative usages of the product and not intended for the guarantee or permission of any right including the industrial rights.