

# Service Manual

## AUTOMOTIVE AFTERMARKET



**WMA MP3 ((X))**  
FFA R Y

(Only for  
CQ-C1401U)

### CQ-C1401U CQ-C1301U

WMA MP3 CD Player/Receiver with CD  
Changer Control



(CQ-C1401U)

## Specifications\*

### General

Power Supply	DC 12V (11V - 16V), Test Voltage 14.4V Negative Ground
Current Consumption	Less than 2.2A (CD mode ; 0.5W 4-channels)
Maximum Power Output	50W×4ch (at 1kHz)
Tone Adjustment Range	Bass ; ±12dB at 100Hz Treble ; ±12dB at 10kHz
Speaker Impedance	4-8Ω
Pre-Amp Output Voltage	2.5V (CD play mode ; 1kHz 0dB)
Pre-Amp Output Impedance	200Ω
Subwoofer Output Voltage	2.5V (CQ-C1401U)
Subwoofer Output Impedance	200Ω (CQ-C1401U)

### FM Stereo Radio

Frequency Range	87.9MHz - 107.9MHz
Usable Sensitivity	10.2dBf. (75Ω)
50dB Quieting Sensitivity	15.2dBf. (75Ω)
Frequency Response	30Hz-15kHz(±3dB)
Alternate Channel Selectivity	75dB
Stereo Separation	35dB(1kHz)
Image Rejection Ratio	55dB
IF Rejection Ratio	100dB
Signal to Noise Ratio	62dB

### AM Radio

Frequency Range	530 - 1,710kHz
Usable Sensitivity	27dB/μV (S/N 20dB)

### CD Player

Sampling Frequency	8 Times Oversampling
DA Converter	1bit DAC System
Pick-Up Type	Astigma 3-beam
Light Source	Semiconductor Laser
Wave Length	790nm
Frequency Response	20Hz to 20,000Hz (±1dB)
Signal to Noise Ratio	96dB
Total Harmonic Distortion	0.01%(1kHz)
Wow and Flutter	Below measurable limits
Channel Separation	75dB

### Dimensions\*\*

### Weight\*\*

7"x1-15/16"x6-5/16"  
(178×50×160mm)

2lbs 14oz (1.3kg)

\* Specifications and the design are subject to possible modification without notice due to improvements.

\*\* Dimensions and Weight shown are approximate.

• Above specifications comply with EIA standards.

# Panasonic®

© 2004 Matsushita Electric Industrial Co., Ltd. All rights reserved. Unauthorized copying and distribution is a violation of law.

**⚠ WARNING**

This service information is designed for experienced repair technicians only and is not designed for use by the general public. It does not contain warnings or cautions to advise non-technical individuals of potential dangers in attempting to service a product. Products powered by electricity should be serviced or repaired only by experienced professional technicians. Any attempt to service or repair the product or products dealt with in this service information by anyone else could result in serious injury or death.

**IMPORTANT SAFETY NOTICE**

There are special components used in this equipment which are important for safety. These parts are marked by ⚠ in the Schematic Diagrams, Circuit Board Diagrams, Exploded Views and Replacement Parts List. It is essential that these critical parts should be replaced with manufacturer's specified parts to prevent shock, fire or other hazards. Do not modify the original design without permission of manufacturer.

**CONTENTS**

	Page		Page
1 ABOUT LEAD FREE SOLDER (PbF) .....	3	11 PACKING PARTS LIST .....	11
2 LASER PRODUCTS .....	3	12 REPLACEMENT PARTS LIST [CQ-C1401U] .....	12
3 FEATUERS .....	3	13 EXPLODED VIEW (Unit) [CQ-C1401U] .....	16
4 REPLACING THE FUSE .....	3	14 REPLACEMENT PARTS LIST [CQ-C1301U] .....	17
5 MAINTENANCE .....	3	15 EXPLODED VIEW (Unit) [CQ-C1301U] .....	21
6 NOTES .....	3	16 CD PLAYER PARTS LIST .....	22
7 DIMENSIONS .....	3	17 EXPLODED VIEW (CD Deck) .....	25
8 WIRING CONNECTION .....	4	18 WIRING DIAGRAM .....	26
9 TERMINALS DESCRIPTION .....	5	19 SCHEMATIC DIAGRAM .....	31
10 PACKAGE AND IC BLOCK DIAGRAM .....	8	20 BLOCK DIAGRAM .....	35

# 1 ABOUT LEAD FREE SOLDER (PbF)

Distinction of PbF PCB:

PCBs (manufactured) using lead free solder will have a PbF stamp on the PCB.

## Caution :

- Pb free solder has a higher melting point than standard solder; Typically the melting point is 50 - 70°F (30 - 40°C) higher. Please use a soldering iron with temperature control and adjust it to 700 ± 20°F (370 ± 10°C). In case of using high temperature soldering iron, please be careful not to heat too long.
- Pb free solder will tend to splash when heated too high (about 1100°F/600°C)
- This lead free solder will be used for the products after serial No. 1,000,001.

# 2 LASER PRODUCTS

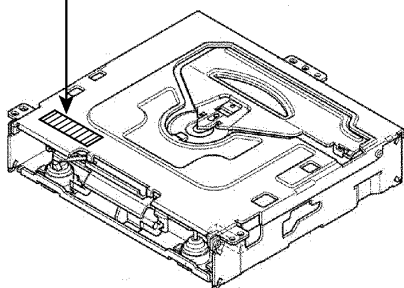
## CAUTION:

This product utilizes a laser diode with the unit turned "on", laser radiation is emitted from the pickup lens.

Laser radiation from the pickup lens is safety level, but be sure the followings:

1. Do not disassemble the optical pickup unit, since radiation from exposed laser diode is dangerous.
2. Do not adjust the variable resistor on the pickup unit. It was already adjusted.
3. Do not look at the focus lens using optical instruments.
4. Recommend not to look at pickup lens for a long time.

**DANGER!** Visible and invisible laser radiation when open. Avoid direct exposure to beam.



Deck Ass'y (Upper Side)

## Caution

This Product utilizes a laser. Use of controls or adjustments or performance of procedures other than those specified herein may result in hazardous radiation exposure.

# 3 FEATUERS

- Digital servo for reliable playback.
- PLL (Phase Locked Loop) synthesized tuning.
- 18-FM, 6-AM presets with preset scan.
- Removable face plate.
- MP3/WMA Playback from CD-R/RW.
- CD Changer Control. (CQ-C1401U)
- The following table describes the differences between 2 models

Features	Models	CQ-C1401U	CQ-C1301U
CD changer control		Yes	No
XM Satellite Radio		supported (XM receiver [XMD1000] is needed)	not supported
Subwoofer output		Yes	No

# 4 REPLACING THE FUSE

Use fuses of the same specified rating (15amps). Using different substitutes or fuses with higher ratings, or connecting the product directly without a fuse, could cause fire or damage to the stereo unit.

# 5 MAINTENANCE

Your product is designed and manufactured to ensure a minimum of maintenance. Use a dry, a soft cloth for routine exterior cleaning. Never use benzine, thinner or other solvents.

# 6 NOTES

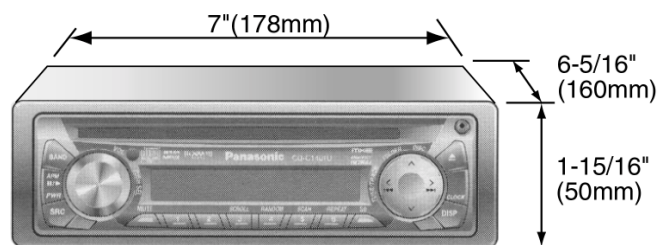
## [RADIO BLOCK]

Do not align the AM/FM package block. When the package block is necessary, it will be supplied already aligned at the factory.

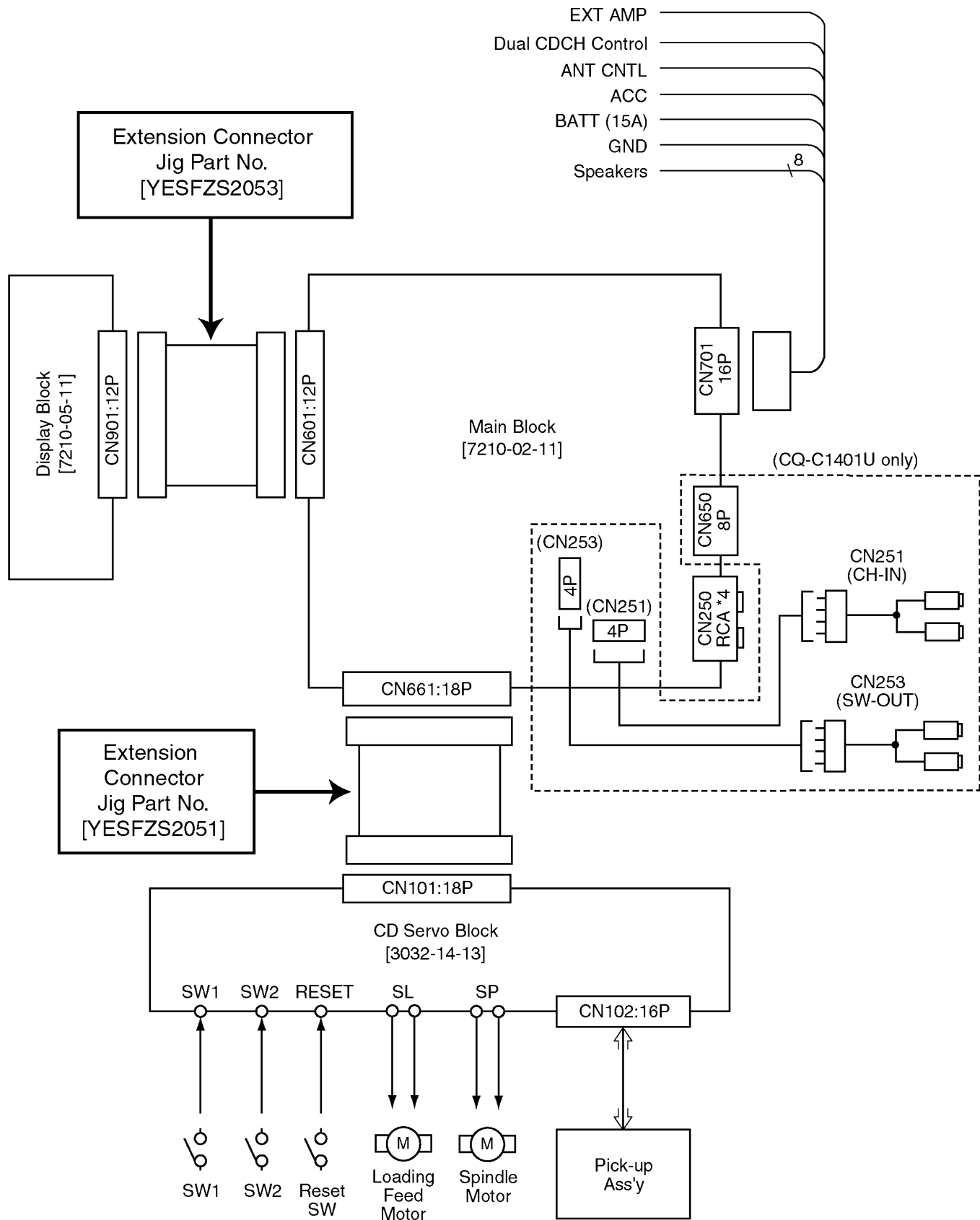
## [CD DECK BLOCK]

This model has no servo alignment points because microcomputer controls the servo circuit.

# 7 DIMENSIONS



# 8 WIRING CONNECTION



# 9 TERMINALS DESCRIPTION

## 9.1. Main Block

IC601 : YESAM276

Pin No.	Port	Description	I/O	(V)		
				FM	AM	CD
1	(NC)	-	-	-	-	-
2	VSM	Radio signal strength	I	0	0	0
3	SD/ST	Radio station detect	I	0.3	0	0.8
4	AVSS	Ground	-	0	0	0
5	SCL	Audio control serial clock	O	4.9	4.9	4.9
6	SDA	Audio control data	O	4.9	4.9	4.9
7	AVREF	(Connecting to +5V)	-	4.9	4.9	4.9
8	CD SO	CD data output	I	2.1	2.3	1.7
9	CD SI	CD data input	O	0	0	3.3
10	CD SCK	CD clock	O	4.7	4.7	4.7
11	CDC DATA/ XM-TX SO	CD changer data/XM radio TX signal	I	0	0	0
12	XM-RX SI	XM radio RX signal	O	4.8	4.8	4.8
13	CDC CLK	CD changer clock	I	0	0	0
14	CDC REM	CD changer remote	O	4.8	4.8	4.8
15	BZ OUT (NC)	-	-	-	-	-
16	LCD DO	LCD data	I	4.8	4.8	4.8
17	LCD DI	LCD data	O	4.7	4.7	4.7
18	LCD CLK	LCD Clock	O	4.8	4.8	4.8
19	CD MUTE	CD mute	I	0	0	4.8
20	CD RST	CD reset	O	4.8	4.8	4.8
21	CD STB	CD strobe	I	3.7	3.7	3.7
22	CDC SENS (NC)	-	-	-	-	-
23	PLL DO	PLL data	I	4.9	4.9	4.9
24	PLL CLK	PLL data clock	O	4.8	4.8	4.8
25	PLL DI	PLL data	O	0	0	0
26	PLL CE	PLL chip select	O	0	0	0
27	(NC)	-	-	-	-	-
28	(NC)	-	-	-	-	-
29	(NC)	-	-	-	-	-
30	(NC)	-	-	-	-	-
31	(NC)	-	-	-	-	-
32	(NC)	-	-	-	-	-
33	VSS1	Ground	-	0	0	0
34	RDS DATA (NC)	-	-	-	-	-
35	S-LED (NC)	-	-	-	-	-
36	LCD CE	LCD chip enable	O	0	0	0
37	LCD 5V CNT	Display 5V control	O	0	0	0
38	(NC)	-	-	-	-	-
39	(NC)	-	-	-	-	-
40	(NC)	-	-	-	-	-
41	(NC)	-	-	-	-	-
42	ROTARY 1	Rotary encoder input 1	I	4.8	4.8	4.8
43	ROTARY 2	Rotary encoder input 2	I	4.7	4.7	4.7
44	(NC)	-	-	-	-	-
45	(NC)	-	-	-	-	-
46	PANEL	Panel detection	I	4.6	4.6	4.6
47	STBY	Power IC stundby control	O	4.8	4.8	4.8
48	EEPROM CE (NC)	-	-	-	-	-
49	EEPROM SK (NC)	-	-	-	-	-
50	EEPROM DI (NC)	-	-	-	-	-
51	EEPROM DO (NC)	-	-	-	-	-
52	(NC)	-	-	-	-	-
53	INV CNT	Illumination control	O	4.8	4.8	4.8
54	AMP CNT	Amp power control	O	4.8	4.8	4.8

Pin No.	Port	Description	I/O	(V)		
				FM	AM	CD
55	ANT CNT	Antenna power control	O	4.8	4.8	4.8
56	EXT.MUTE	External mute	O	4.8	4.8	4.8
57	MAIN CNT	Main power control	O	4.8	4.8	4.8
58	AMP MUTE	Amp mute control	O	4.8	4.8	4.8
59	AF MUTE	AF mute control	O	4.8	4.8	4.8
60	RESET	Reset	I	4.8	4.8	4.8
61	RDS CLK (NC)	-	-	-	-	-
62	(NC)	-	-	-	-	-
63	(NC)	-	-	-	-	-
64	RM DATA	Remote control data	I	4.8	4.8	4.8
65	BATT	Battery voltage detection	I	4.5	4.5	4.5
66	CDC STB/ XM DET	CD Changer strobe/ XM receiver detection	I	4.8	4.8	4.8
67	VSS0	Ground	-	0	0	0
68	VDD1	+5V power supply	-	4.8	4.8	4.8
69	X2	Crystal oscillator	-	2.9	2.9	2.9
70	X1	Crystal oscillator	-	2.3	2.3	2.3
71	TEST	(TEST terminal)	-	0	0	0
72	XT2	Crystal oscillator	-	2.7	2.7	2.7
73	XT1	Crystal oscillator	-	2	2	2
74	VDD0	+5V power supply	-	4.9	4.9	4.9
75	AVDD	+5V power supply	-	4.8	4.8	4.8
76	INI A	Mode setting A	I	0	0	0
77	INI B	Mode setting B	I	4.8	4.8	4.8
78	ACC	ACC detection	I	4.9	4.9	4.9
79	(NC)	(Connecting to ground)	-	0	0	0
80	LEVEL	(Connecting to ground)	-	0	0	0

## 9.2. Display Block

IC901 : YEAMLC75854T

Pin No.	Port	Description	I/O	(V)
1-35	SEG1-35	LCD segment data	O	2.5
36-39	NC	-	-	-
40-43	COM1-4	LCD common	O	2.5
44	KS1	Not used	-	-
45-49	KS2-6	Key scan	O	5.0
50-54	KI1-5	Key data	I	0
55	TEST	(Connecting to ground)	-	0
56	VDD	+5V power supply	-	5.0
57	VDD1	VDD1 filter terminal	-	3.3
58	VDD2	VDD2 filter terminal	-	1.7
59	VSS	Ground	-	0
60	OSC	Oscillator terminal	-	3.9
61	DO	Key data output	O	5.0
62	CE	LCD driver chip enable	I	0
63	CLK	LCD clock	I	4.9
64	DI	LCD data	I	4.9

## 9.3. CD Servo Block

### IC401 : YESAM275

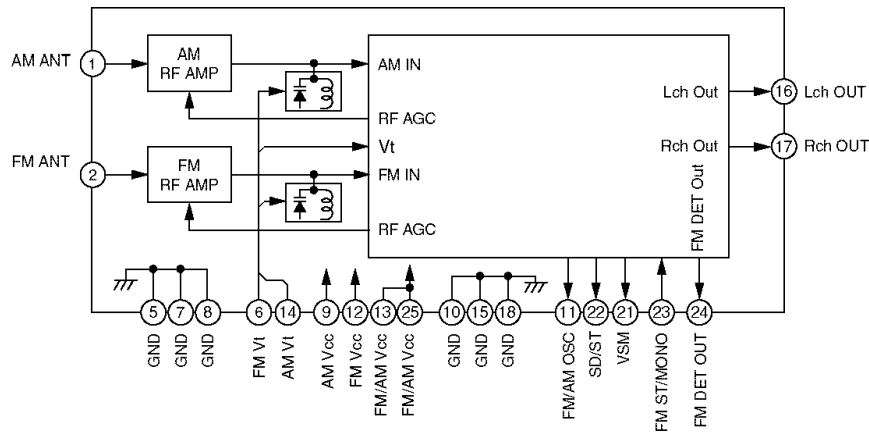
Pin No.	Port	Descriptions	I/O	(V)
1	CVSS1	GND	-	0
2	-	-	-	-
3	CVSS2	GND	-	0
4	DVDD1	I/O system (3.3V) power supply	-	3.3
5	A10	Address bus of FLASH ROM	O	0
6	-	-	-	-
7	A11	Address bus of FLASH ROM	O	3.3
8	A12		O	3.3
9	A13		O	3.3
10	A14		O	3.3
11	A15		O	3.3
12	/CVDD1	CORE CPU system (1.6V) power supply	-	1.6
13	-	-	-	-
14	DVSS1	GND	-	0
15	CVSS3	GND	-	0
16	/CVDD2	I/O system (3.3V) power supply	-	1.6
17	-	-	-	-
18	-	-	-	-
19	READY	-	-	3.3
20	/PS	FLASH ROM selection signal	O	3.3
21	-	-	-	-
22	-	-	-	-
23	R/W	Lead/light signal to FLASH ROM	O	3.3
24	/MSTRB	Memory access signal	O	3.3
25	-	-	-	-
26	/MSC	-	-	3.3
27	MUTE	Mute signal output (H:Mute on)	O	0
28	-	-	-	-
29	-	-	-	-
30	/HOLD	-	-	3.3
31	BIO	SUBO input	I	0
32	MP/MC	Operation mode setting (external pull-up)	I	3.3
33	DVDD2	I/O system (3.3V) power supply	-	3.3
34	CVSS4	GND	-	0
35	BD R1	GND	I	0
36	-	-	-	-
37	CVSS5	GND	-	0
38	-	-	-	-
39	-	-	-	-
40	DVSS2	GND	-	0
41	CLK C M	AUDIO bit clock input	I	1.6
42	SCK	Clock input	I	3.3
43	LRCK C M	AUDIO L/R identifying signal input	I	1.6
44	CDFS	Serial frame sink signal input	I	2.6
45	DATA CM	AUDIO serial data input	I	1.6
46	-	-	-	-
47	SI	Serial data input	I	0
48	CLK M C	AUDIO bit clock output	O	1.6
49	SCK	Clock input	I	3.3
50	CVSS6	GND	-	0
51	-	-	-	-
52	CVDD3	CORE CPU system (1.6V) power supply	-	1.6
53	LRCK M C	AUDIO L/R identifying signal output	O	1.6
54	CDFS	Serial frame sink signal input	I	2.4
55	-	-	-	-
56	DVDD3	I/O system (3.3V) power supply	-	3.3
57	DVSS3	GND	-	0

Pin No.	Port	Descriptions	I/O	(V)
58	REST SW	Mechanics deck REST SW input	I	3.3
59	DATA M C	AUDIO serial data output	O	1.6
60	SO	Serial data output	O	1.2
61	-	-	-	-
62	-	-	-	-
63	/NMI	-	-	3.3
64	/INT0	-	-	3.3
65	/INT1	-	-	3.3
66	BLKCK	Subcode block clock pulse input	I	0
67	/INT3	-	-	3.3
68	CV DD4	CORE CPU system (1.6V) power supply	-	1.6
69	SW1	Mechanics deck SW1 input	I	0
70	CVSS7	GND	-	0
71	MCLK	Clock output (To Servo DSP)	O	3.3
72	DVSS4	GND	-	0
73	MLD	Command load signal output (To Servo DSP)	I	3.3
74	MDATA	Command data output (To Servo DSP)	O	3.3
75	DVDD4	I/O system (3.3V) power supply	-	3.3
76	DVSS5	GND	-	0
77	CLK MD1	Clock mode setting (L fixation)	I	0
78	CLK MD2	Clock mode setting (H fixation)	I	3.3
79	CLK MD3	Clock mode setting (L fixation)	I	-
80	-	-	-	-
81	SW2	Mechanics deck SW2 input	I	0
82	-	-	-	-
83	EMU0	-	-	0
84	EMU/OF F	-	-	3.3
85	TDO	-	-	3.3
86	TDI	-	-	0
87	/TRST	-	-	3.3
88	TCK	-	-	0
89	TMS	-	-	3.3
90	CVSS8	GND	-	3.3
91	CVDD5	CORE CPU system (1.6V) power supply	-	0
92	HPIENA	GND	I	1.6
93	DVSS6	GND	-	0
94	-	-	-	-
95	CLKENA	Oscillation output Cainabl signal	O	3.3
96	X1	Crystal Connection	O	0
97	X2/CLKIN	Crystal Connection	I	0
98	RS	Reset signal input	I	1
99	D0	Data base of FLASH ROM	I/O	3.4
100	D1		I/O	0
101	D2		I/O	0
102	D3		I/O	0
103	D4		I/O	0
104	D5		I/O	0
105	A16	Address bus of FLASH ROM	O	0
106	DVSS7	GND	-	0
107	A17	Address bus of FLASH ROM	O	3.3
108	A18		O	0
109	A19	Address bus of FLASH ROM	O	0
110	A20		O	0
111	CVSS9	GND	-	0
112	DVDD5	I/O system (3.3V) power supply	-	3.3
113	D6	Data bus of FLASH ROM	I/O	0
114	D7		I/O	0
115	D8		I/O	0
116	D9		I/O	0
117	D10		I/O	0

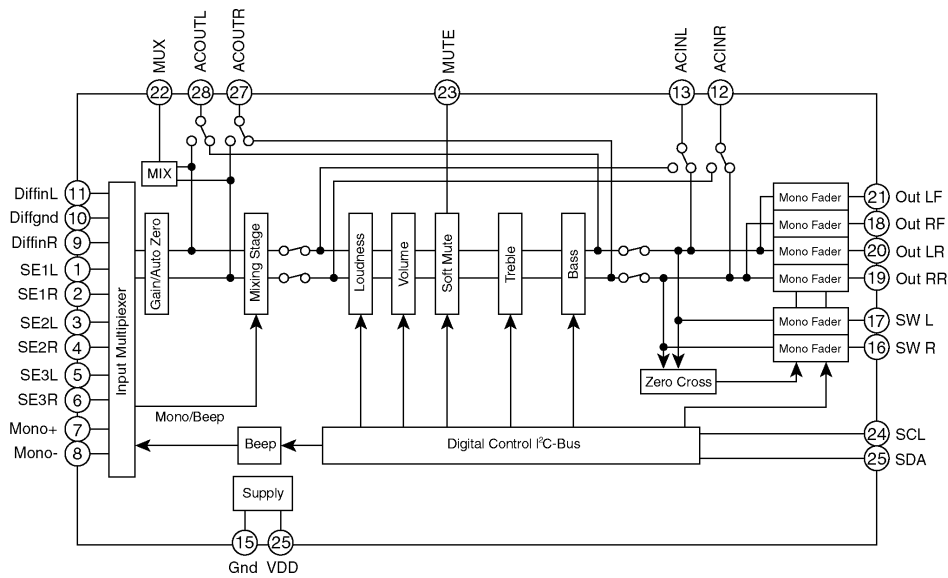
Pin No.	Port	Descriptions	I/O	(V)
118	D11	Data bus of FLASH ROM	I/O	0
119	D12		I/O	0
120	STAT	Status signal input	I	0.4
121	D13	Data path of FLASH ROM	I/O	0
122	D14		I/O	0
123	D15		I/O	0
124	-	-	-	-
125	CVDD6	CORE CPU system (1.6V) power supply	-	1.6
126	CVSS10	GND	-	0
127	-	-	-	-
128	DVSS8	I/O system (3.3V) power supply	-	0
129	-	-	-	-
130	DVDD6	I/O system (3.3V) power supply	-	3.3
131	A0	Address bus of FLASH ROM	O	0
132	A1		O	0
133	A2		O	3.3
134	A3		O	3.3
135	/RST	Reset signal output(To Servo DSP)	O	3.3
136	A4	Address bus of FLASH ROM	O	3.3
137	A5		O	0
138	A6		O	3.3
139	A7		O	3.3
140	A8		O	0
141	A9		O	3.3
142	CVDD7		CORE CPU system (1.6V) power supply	-
143	-	-	-	-
144	DVSS9	GND	-	0

# 10 PACKAGE AND IC BLOCK DIAGRAM

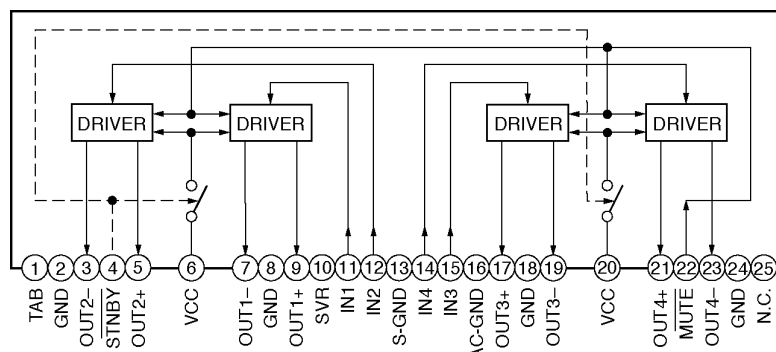
## 10.1. Main Block



PA051 : YESAP387

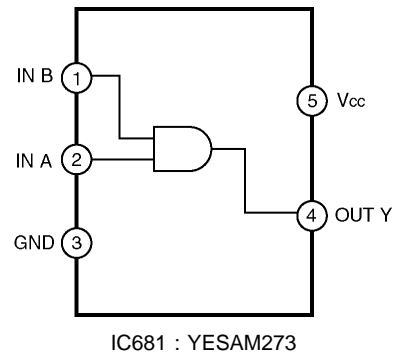
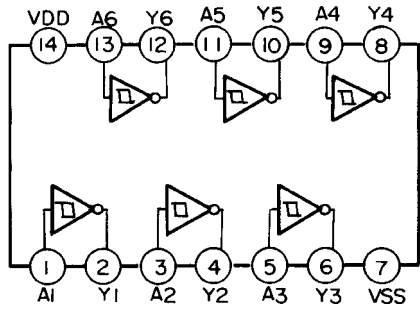
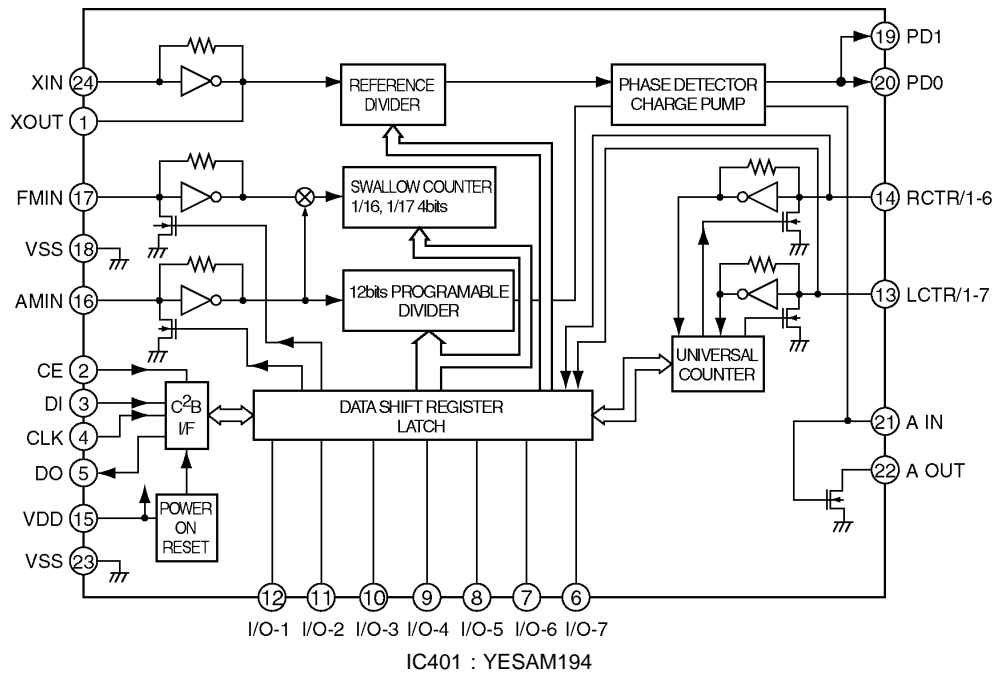


IC201 : C1BB0000543

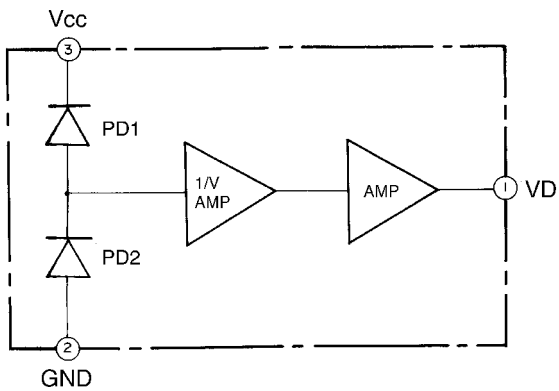


IC271 : YESAM274

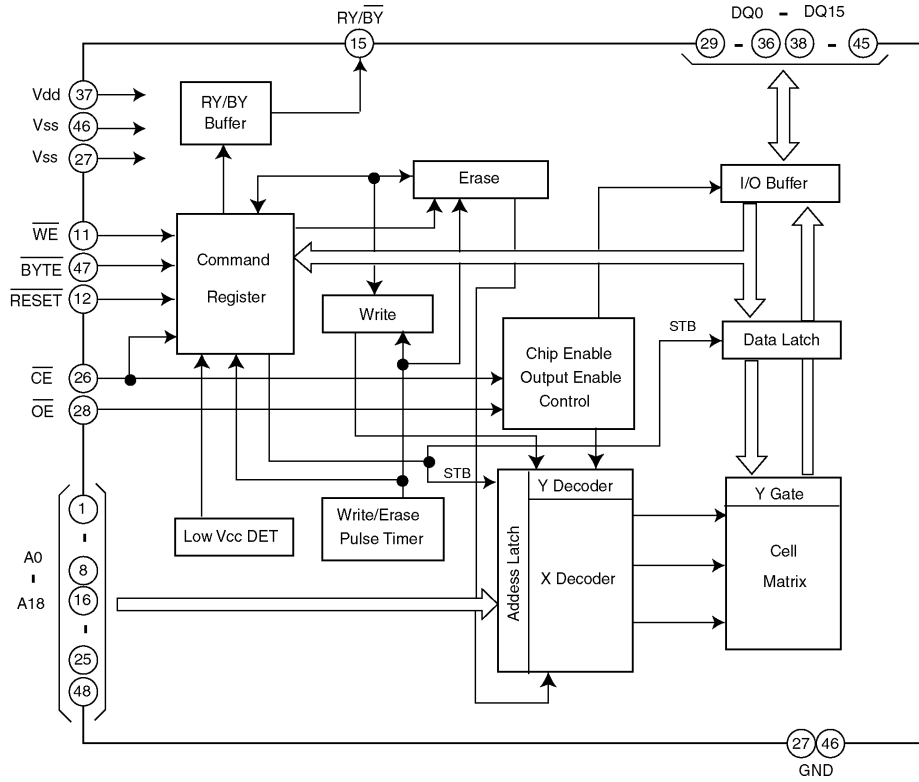




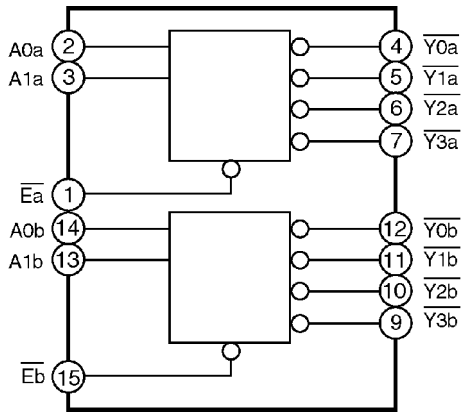
## 10.2. Display Block



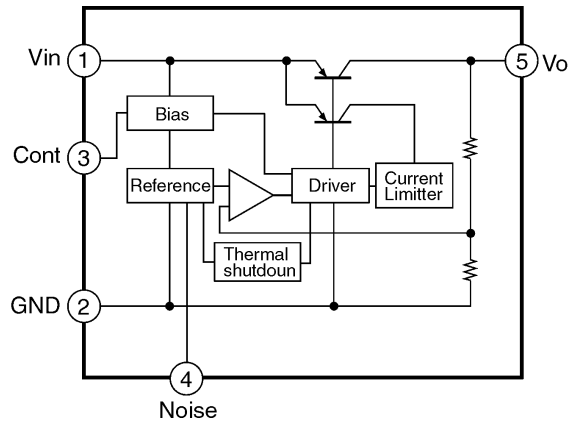
### 10.3. CD Servo Block



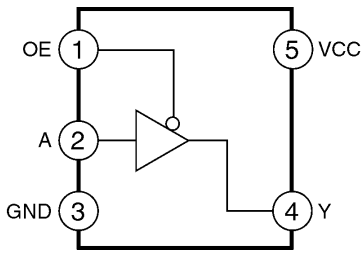
IC402 : YESAM271



IC403 : YESAM171

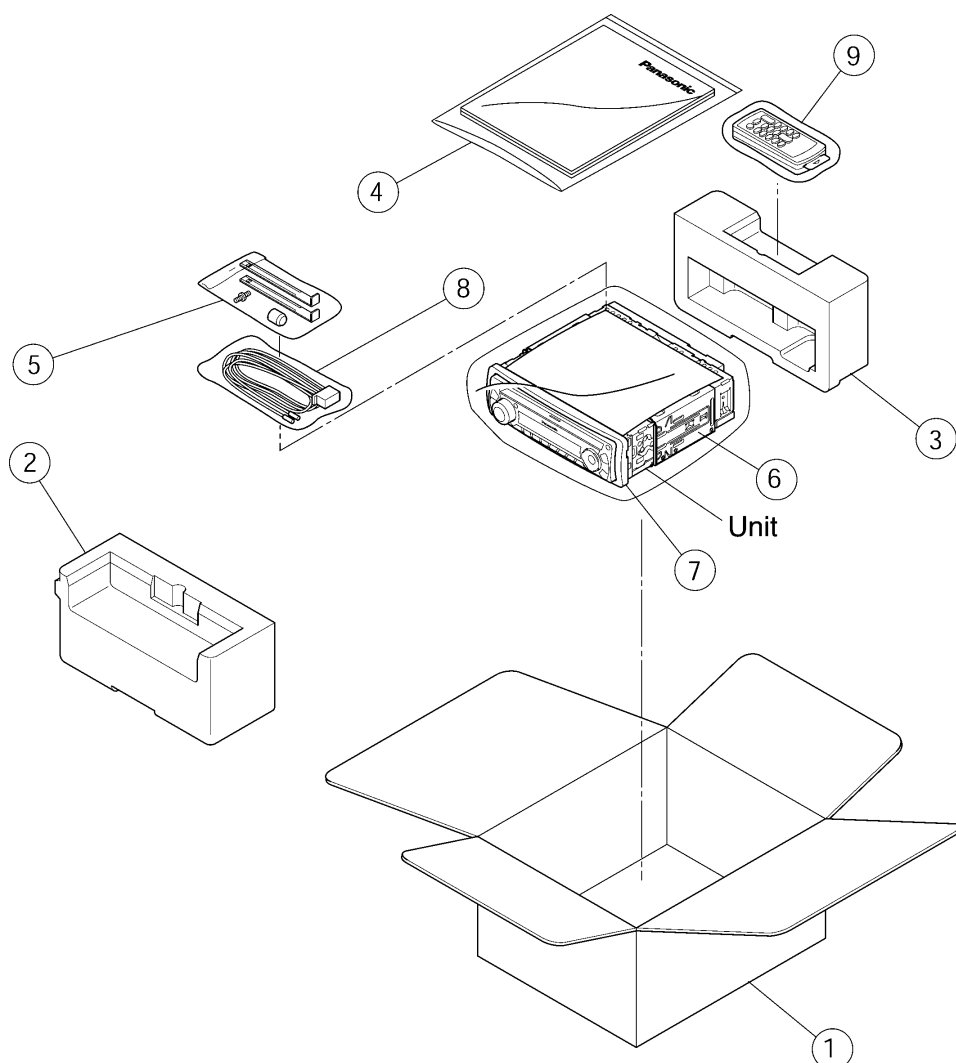


IC404 : YESAM178



IC405 : YESAM270

# 11 PACKING PARTS LIST



- Item numbers listed below should not order regular spare parts. **(not available)**

Item No.	Part No.	Part Name & Description	Q'ty	Remarks
1	—	Inner Carton	1	Not available
2	—	Packing Pad (Front)	1	Not available
3	—	Packing Pad (Rear)	1	Not available
4	—	Instruction Kit	1	Not available
	—	Operating Instructions	(1)	Not available
	—	Installation Instructions	(1)	Not available
	—	Owners Information Card	(1)	Not available
5	YEP0FZ5698	Installation Kit	1	
	—	Lock Cancel Plate	(2)	Not available
	—	Mounting Bolt	(1)	Not available
	—	Rubber Bushing	(1)	Not available
6	YEFX0217263	Mounting Collar	1	
7	YEFX05657	Trim plate	1	
8	YESAJ01223	Power Connector	1	
9	EUR7641010	Remote Control Unit (includes a battery)	1	

# 12 REPLACEMENT PARTS LIST [CQ-C1401U]

Notes :

1. Be sure to make your orders of replacement parts according to this list.
2. Important safety notice: Components, identified by  $\Delta$  mark have special characteristics important for safety. When replacing any of these components, use only manufacturer's specified parts.
3. Location keys in the remarks column indicates the general location of the parts shown in the exploded drawing, as in a road map.
4. The marking (RTL) indicates that Retention Time is limited for this item. After the discontinuation of assembly in production, the item will continue to be available for a specific period of time. The retention period of availability is dependent on the type of assembly, and in accordance with the laws governing part and product retention. After the end of this period, the assembly will no longer be available.
  - Order intake period is basically six months after the first shipment.
5. Reference materials of parts with the "TSN" mark in the remarks column are uploaded in the TSN (Technical Service Navigation) system website. Please download from that website for references.

Ref. No.	Part No.	Part Name & Description	Remarks
<b>[7210-02-11] MAIN BLOCK</b>			
<b>IC's and TRANSISTORS</b>			
IC201	C1BB00000543	IC	
IC231	YESAM268	IC	
IC271	YESAM274	IC	
IC401	YESAM194	IC	
IC601	YESAM276	IC	
IC650	YESAM265	IC	
IC681	YESAM273	IC	
IC710	YESAM277	IC	
IC740	YESAM269	IC	
IC750	YESAM267	IC	
IC755	YESAM263	IC	
PA051	YESAP387	Tuner Pack	
Q052	YESAN082	Transistor	
Q055	YESAN082	Transistor	
Q262	YESAN085	Transistor	
Q266	YESAN085	Transistor	
Q346	YESAN085	Transistor	
Q362	YESAN085	Transistor	
Q366	YESAN085	Transistor	
Q411	YEAN2SK536TB	FET	
Q660	YESAN081	Transistor	
Q661	YESAN080	Transistor	
Q662	YESAN080	Transistor	
Q681	YESAN084	Transistor	
Q720	YESAN089	FET	
Q721	YESAN084	Transistor	
Q722	YESAN089	FET	
Q723	YESAN084	Transistor	
Q730	YESAN089	FET	
Q731	YESAN084	Transistor	
Q740	YESAN079	Transistor	
Q751	YESAN087	Transistor	
Q761	YESAN090	Transistor	

Ref. No.	Part No.	Part Name & Description	Remarks
Q770	YESAN088	Transistor	
<b>DIODEs</b>			
D270-279	YESAD146	Diode	
D650	YESAD144	Diode	
D652	YESAD119	Zener Diode	
D653	YESAD144	Diode	
D671	YESAD143	Diode	
D672	YESAD143	Diode	
D683	YESAD115	Zener Diode	
D684	YESAD115	Zener Diode	
D685	YESAD115	Zener Diode	
D689	YESAD115	Zener Diode	
D701	YESAD139	Diode	
D702	YESAD119	Zener Diode	
D710	YESAD144	Diode	
D720	YESAD146	Diode	
D721	YESAD146	Diode	
D740	YESAD146	Diode	
D741	YESAD118	Diode	
D750	YESAD141	Diode	
D760	YESAD146	Diode	
D761	YESAD140	Diode	
D770	YESAD123	Zener Diode	
D790	YESAD143	Diode	
<b>CPACITORS</b>			
C051	YECUS1H470JC	Ceramic 47pF 50WV	
C053	YECUS1H103KX	Ceramic 0.01 $\mu$ F 50WV	
C055	YECUS1H103KX	Ceramic 0.01 $\mu$ F 50WV	
C059	F1J1H101A025	Ceramic 100pF 50WV	
C061	YESCC318	Ceramic 0.027 $\mu$ F 50WV	
C062	YESCC318	Ceramic 0.027 $\mu$ F 50WV	
C065	YECUS1H102KX	Ceramic 0.001 $\mu$ F 50WV	
C067	YECUS1H103KX	Ceramic 0.01 $\mu$ F 50WV	
C203	YESCC314	Electrolytic 3.3 $\mu$ F 50WV	
C204	YESCC191	Ceramic 2.2 $\mu$ F 50WV	
C208	YESCC199	Ceramic 0.33 $\mu$ F 16WV	
C210	YESCC228	Ceramic 0.1 $\mu$ F 16WV	
C220	YESCC375	Electrolytic 2.2 $\mu$ F 50WV	
C235	YESCC284	Ceramic 0.18 $\mu$ F 50WV	
C236	YESCC319	Ceramic 0.082 $\mu$ F 50WV	
C237	YESCC284	Ceramic 0.18 $\mu$ F 50WV	
C261	YESCC372	Electrolytic 4.7 $\mu$ F 25WV	
C263	YECUS1C474KX	Ceramic 0.47 $\mu$ F 16WV	
C265	YESCC372	Electrolytic 4.7 $\mu$ F 25WV	
C267	YECUS1C474KX	Ceramic 0.47 $\mu$ F 16WV	
C268	YECUS1C474KX	Ceramic 0.47 $\mu$ F 16WV	
C269	YECUS1C474KX	Ceramic 0.47 $\mu$ F 16WV	
C271	YECUS1H472KX	Ceramic 0.0047 $\mu$ F 50WV	
C272	YECUS1H472KX	Ceramic 0.0047 $\mu$ F 50WV	
C276	YESCC366	Electrolytic 10 $\mu$ F 16WV	
C277	YESCC229	Ceramic 1 $\mu$ F 16WV	
C278	YECUS1H104KX	Ceramic 0.1 $\mu$ F 50WV	
C279	YESCC368	Electrolytic 2200 $\mu$ F 16WV	
C280	YESCC191	Ceramic 2.2 $\mu$ F 50WV	
C281	YESCC191	Ceramic 2.2 $\mu$ F 50WV	
C291	YECUS1H103KX	Ceramic 0.01 $\mu$ F 50WV	
C292	F1J1H101A025	Ceramic 100pF 50WV	
C303	YESCC314	Electrolytic 3.3 $\mu$ F 50WV	
C304	YESCC191	Ceramic 2.2 $\mu$ F 50WV	
C308	YESCC199	Ceramic 0.33 $\mu$ F 16WV	
C309	YESCC366	Electrolytic 10 $\mu$ F 16WV	

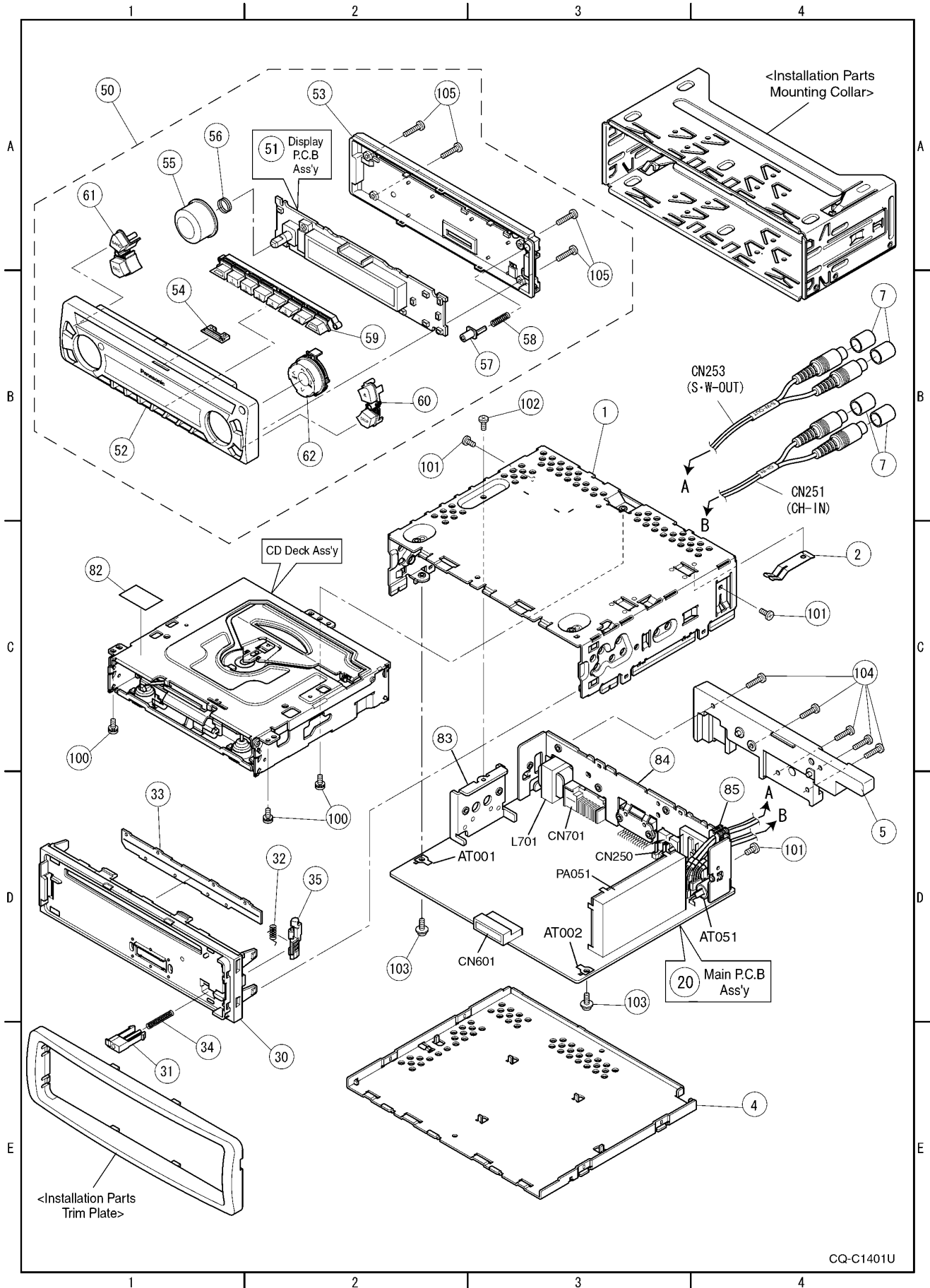
Ref. No.	Part No.	Part Name & Description	Remarks
C310	YESCC313	Electrolytic 220μF 10WV	
C320	YESCC375	Electrolytic 2.2μF 50WV	
C325	YECUS1H221JC	Ceramic 220pF 50WV	
C339	YECUS1H103KX	Ceramic 0.01μF 50WV	
C345	YESCC372	Electrolytic 4.7μF 25WV	
C361	YESCC372	Electrolytic 4.7μF 25WV	
C363	YECUS1C474KX	Ceramic 0.47μF 16WV	
C365	YESCC372	Electrolytic 4.7μF 25WV	
C367	YECUS1C474KX	Ceramic 0.47μF 16WV	
C368	YECUS1C474KX	Ceramic 0.47μF 16WV	
C369	YECUS1C474KX	Ceramic 0.47μF 16WV	
C371	YECUS1H472KX	Ceramic 0.0047μF 50WV	
C372	YECUS1H472KX	Ceramic 0.0047μF 50WV	
C375	YESCC373	Electrolytic 0.47μF 50WV	
C378	YECUS1H104KX	Ceramic 0.1μF 50WV	
C380	YECUS1H104KX	Ceramic 0.1μF 50WV	
C401	YESCC219	Ceramic 10pF 50WV	
C402	F1J1H120A025	Ceramic 12pF 50WV	
C403	YESCC376	Electrolytic 100μF 6.3WV	
C405	F1J1H101A025	Ceramic 100pF 50WV	
C411	YECUS1H103KX	Ceramic 0.01μF 50WV	
C412	YECUS1E223KX	Ceramic 0.022μF 25WV	
C413	ECQV1H224JL2	Plastic Film 0.22μF 50WV	
C417	YESCC371	Electrolytic 680μF 16WV	
C425	YECUS1H103KX	Ceramic 0.01μF 50WV	
C430	YESCC313	Electrolytic 220μF 10WV	
C602	YESCC378	Electrolytic 1000μF 6.3WV	
C605	YECUS1H103KX	Ceramic 0.01μF 50WV	
C628	YESCC228	Ceramic 0.1μF 16WV	
C631	YESCC229	Ceramic 1μF 16WV	
C634	YECUS1H220JC	Ceramic 22pF 50WV	
C635	YECUS1H220JC	Ceramic 22pF 50WV	
C650	YECUS1H103KX	Ceramic 0.01μF 50WV	
C660	YESCC375	Electrolytic 2.2μF 50WV	
C672	YESCC377	Electrolytic 47μF 6.3WV	
C681	YESCC228	Ceramic 0.1μF 16WV	
C682	YECUS1H103KX	Ceramic 0.01μF 50WV	
C701	YESCC374	Electrolytic 01μF 50WV	
C710	YESCC284	Ceramic 0.18μF 50WV	
C711	YECUS1H103KX	Ceramic 0.01μF 50WV	
C740	YESCC369	Electrolytic 470μF 16WV	
C741	YESCC379	Electrolytic 150μF 6.3WV	
C751	YESCC370	Electrolytic 1000μF 16WV	
C752	YESCC365	Electrolytic 120μF 10WV	
C753	YESCC377	Electrolytic 47μF 6.3WV	
C755	YESCC228	Ceramic 0.1μF 16WV	
C756	YESCC380	Electrolytic 39μF 6.3WV	
C770	YESCC367	Electrolytic 100μF 16WV	
C771	F1J1H101A025	Ceramic 100pF 50WV	
C790	YECUS1H104KX	Ceramic 0.1μF 50WV	
R771	F1J1H101A025	Ceramic 100pF 50WV	
<b>RESISTORS</b>			
J722	YESRG204	Carbon 560Ω 1/4W	
J724	YESRG204	Carbon 560Ω 1/4W	
J801-821	YESRG132	Chip 0Ω 1/4W	
J823-829	YESRG132	Chip 0Ω 1/4W	
J830	ERJ8GX0R00V	Chip 0Ω 1/4W	
J831-835	YESRG132	Chip 0Ω 1/4W	
J837-840	YESRG132	Chip 0Ω 1/4W	
J901	YESRG093	Chip 0Ω 1/8W	
J902	YESRG093	Chip 0Ω 1/8W	
Ref. No.	Part No.	Part Name & Description	Remarks
J904	YESRG093	Chip 0Ω 1/8W	
J906	YESRG093	Chip 0Ω 1/8W	
L290	YESRG093	Chip 0Ω 1/8W	
L291	YESRG093	Chip 0Ω 1/8W	
L292	YESRG093	Chip 0Ω 1/8W	
R050	YESRG127	Chip 5.6Ω 1/8W	
R051	YESRG132	Chip 0Ω 1/4W	
R052	YESRG094	Chip 100Ω 1/8W	
R053	YESRG114	Chip 330Ω 1/8W	
R058	YESRG093	Chip 0Ω 1/8W	
R059	YESRG097	Chip 100kΩ 1/8W	
R060	YESRG115	Chip 33kΩ 1/8W	
R065	YESRG117	Chip 3.9kΩ 1/8W	
R202	YESRG184	Chip 4.3kΩ 1/8W	
R203	YESRG115	Chip 33kΩ 1/8W	
R204	YESRG125	Chip 5.6kΩ 1/8W	
R205	YESRG216	Chip 9.1kΩ 1/8W	
R208	YESRG202	Chip 18kΩ 1/4W	
R225	YESRG205	Carbon 1kΩ 1/4W	
R226	YESRG205	Carbon 1kΩ 1/4W	
R231	YESRG191	Chip 22kΩ 1/4W	
R233	YESRG096	Chip 10kΩ 1/8W	
R235	YESRG096	Chip 10kΩ 1/8W	
R248	YESRG102	Chip 18Ω 1/8W	
R261	YESRG103	Chip 180Ω 1/8W	
R262	YESRG096	Chip 10kΩ 1/8W	
R263	YESRG124	Chip 560Ω 1/8W	
R265	YESRG103	Chip 180Ω 1/8W	
R266	YESRG096	Chip 10kΩ 1/8W	
R267	YESRG124	Chip 560Ω 1/8W	
R275	YESRG109	Chip 22kΩ 1/8W	
R280	YESRG212	Chip 130Ω 1/8W	
R290	YESRG093	Chip 0Ω 1/8W	
R291	YESRG093	Chip 0Ω 1/8W	
R302	YESRG184	Chip 4.3kΩ 1/8W	
R303	YESRG115	Chip 33kΩ 1/8W	
R304	YESRG125	Chip 5.6kΩ 1/8W	
R305	YESRG216	Chip 9.1kΩ 1/8W	
R308	YESRG202	Chip 18kΩ 1/4W	
R325	YESRG096	Chip 10kΩ 1/8W	
R326	YESRG096	Chip 10kΩ 1/8W	
R331	YESRG191	Chip 22kΩ 1/4W	
R345	YESRG103	Chip 180Ω 1/8W	
R346	YESRG109	Chip 22kΩ 1/8W	
R348	YESRG102	Chip 18Ω 1/8W	
R361	YESRG103	Chip 180Ω 1/8W	
R362	YESRG096	Chip 10kΩ 1/8W	
R363	YESRG124	Chip 560Ω 1/8W	
R365	YESRG103	Chip 180Ω 1/8W	
R366	YESRG096	Chip 10kΩ 1/8W	
R367	YESRG124	Chip 560Ω 1/8W	
R375	YESRG136	Chip 100kΩ 1/4W	
R390	YESRG132	Chip 0Ω 1/4W	
R391	YESRG093	Chip 0Ω 1/8W	
R401	YESRG133	Chip 10Ω 1/4W	
R402	YESRG124	Chip 560Ω 1/8W	
R403	YESRG100	Chip 1.5kΩ 1/8W	
R404	YESRG189	Chip 100Ω 1/4W	
R405	YESRG206	Carbon 2.2kΩ 1/4W	
R406	YESRG208	Carbon 47kΩ 1/4W	
R407	YESRG104	Chip 1.8kΩ 1/8W	
R408	YESRG108	Chip 2.2kΩ 1/8W	
R409	YESRG108	Chip 2.2kΩ 1/8W	
R410	YESRG108	Chip 2.2kΩ 1/8W	
R411	YESRG108	Chip 2.2kΩ 1/8W	
R412	YESRG147	Chip 4.7kΩ 1/4W	



Ref. No.	Part No.	Part Name & Description	Remarks
Q902	B1GDCFJJ0008	Transistor	
<b>DIODES</b>			
D901-905	YESAD125	LED	
D910-917	YESAD125	LED	
D908	YESAD142	LED	
D909	YESAD142	LED	
D920	YESAD145	LED	
D931	YESAD147	Zener Diode	
<b>CAPACITORS</b>			
C901	YESCC385	Ceramic 0.1 $\mu$ F 16WV	
C902	YESCC385	Ceramic 0.1 $\mu$ F 16WV	
C903	YESCC293	Ceramic 560pF 50WV	
C904	YESCC385	Ceramic 0.1 $\mu$ F 16WV	
C905	YESCC385	Ceramic 0.1 $\mu$ F 16WV	
C906	YESCC386	Ceramic 0.001 $\mu$ F 50WV	
C908	YESCC385	Ceramic 0.1 $\mu$ F 16WV	
<b>RESISTORS</b>			
R901	YESRG211	Chip 4.7 $\Omega$ 1/10W	
R902	YESRG170	Chip 47k $\Omega$ 1/10W	
R903	YESRG210	Chip 470 $\Omega$ 1/10W	
R904	YESRG159	Chip 1k $\Omega$ 1/10W	
R905	YESRG159	Chip 1k $\Omega$ 1/10W	
R906	YESRG159	Chip 1k $\Omega$ 1/10W	
R908	YESRG093	Chip 0 $\Omega$ 1/8W	
R909	YESRG159	Chip 1k $\Omega$ 1/10W	
R910	YESRG209	Chip 2.2k $\Omega$ 1/10W	
R911	YESRG093	Chip 0 $\Omega$ 1/8W	
R912	YESRG159	Chip 1k $\Omega$ 1/10W	
R913	YESRG159	Chip 1k $\Omega$ 1/10W	
R914	YESRG093	Chip 0 $\Omega$ 1/8W	
R915	YESRG093	Chip 0 $\Omega$ 1/8W	
R921	YESRG041	Chip 270 $\Omega$ 1/4W	
R950	YESRG215	Chip 430 $\Omega$ 1/8W	
R951	YESRG215	Chip 430 $\Omega$ 1/8W	
R952	YESRG215	Chip 430 $\Omega$ 1/8W	
R953	YESRG201	Chip 620 $\Omega$ 1/8W	
R954	YESRG213	Chip 160 $\Omega$ 1/8W	
R958	YESRG118	Chip 470 $\Omega$ 1/8W	
R965	YESRG220	Chip 820 $\Omega$ 1/4W	
<b>CONNECTOR</b>			
CN901	YESAE372		
<b>SWITCHes</b>			
SW901	YESAS122	SWITCH	
SW902-917	K0H1BA000445	SWITCH	
<b>LCD</b>			
LD901	YESXDCM021	LCD	
<b>Accessories</b>			
<b>PRINTING</b>			
	—	Operating Instructions	TSN

Ref. No.	Part No.	Part Name & Description	Remarks
<b>INSTALLATION PARTS</b>			
	YEP0FZ5698	Installation Kit (Lock Cancel Plate, Mounting Bolt, Rubber Bushing)	
	YEFX0217263	Mounting Collar	
	YEF05657	Trim Plate	
	YESAJ01223	Power Connector	
	EUR7641010	Remote Control Unit	
	CR2025/1F	Lithium Battery	△
<b>MECHANICAL PARTS</b>			
<b>MISCELLANEOUS</b>			
AT001	YESAT01031	Earth Terminal	
AT002	YESAT01031	Earth Terminal	
AT051	YM104C700ZA	Antenna Terminal	
1	YESFA01073	Main Chassis	
2	YESFX005155	Ground Contactor	
4	YESFA05037	Bottom Cover	
5	YESFF01084	Heat Sink	
7	YESFR01019	RCA Cap	
20	YESAP388	Main PCB Ass'y	RTL
30	YESFC02156	Escutcheon	
31	YESFE13214	Push Button	
32	YESFX005150	Hook Spring	
33	YESFS01089	Dust Felt	
34	YESFX005156	Push Spring	
35	YESFX999064	Hook	
50	YESSDF0144	Removable Face Plate Unit	RTL
51	YESAP390	Display PCB Ass'y	RTL
52	YESFC02157	Front Cover Ass'y	
53	YESFA07012	Rear Cover	
54	YESFX001033	CD Indicator	
55	YESFE02022	Knob, VOL	
56	YESFX005138	Knob Spring	
57	YESFE13219	Rease Button	
58	YESFX005152	Spring, Open	
59	YESFE13217	Preset Button	
60	YESFE13216	Eject/DISP Button	
61	YESFE13215	BAND/SRC Button	
62	YESFE13218	TUNE/TRACK Button	
82	YESFM01080	Laser Seal	
83	YESFX021140	Regulator Bracket	
84	YESFA08033	Rear Plate	
85	YESFX007027	RCA Bush	
100	YESJS01189	Screw, 2.6 * 4	
101	YESJS01188	Bind Screw 2.6 * 5	
102	YESJT03074	Bind Screw 2.6 * 8	
103	YESJS01190	Screw, 2.6 * 6	
104	YESJS01187	Bind Screw 2.6 * 10	
105	YESJT03075	Tapping Screw 2 * 8	

# 13 EXPLODED VIEW (Unit) [CQ-C1401U]



CQ-C1401U



# 14 REPLACEMENT PARTS LIST [CQ-C1301U]

Notes :

1. Be sure to make your orders of replacement parts according to this list.
2. Important safety notice: Components, identified by  $\Delta$  mark have special characteristics important for safety. When replacing any of these components, use only manufacturer's specified parts.
3. Location keys in the remarks column indicates the general location of the parts shown in the exploded drawing, as in a road map.
4. The marking (RTL) indicates that Retention Time is limited for this item. After the discontinuation of assembly in production, the item will continue to be available for a specific period of time. The retention period of availability is dependent on the type of assembly, and in accordance with the laws governing part and product retention. After the end of this period, the assembly will no longer be available.
  - Order intake period is basically six months after the first shipment.
5. Reference materials of parts with the "TSN" mark in the remarks column are uploaded in the TSN (Technical Service Navigation) system website. Please download from that website for references.

Ref. No.	Part No.	Part Name & Description	Remarks
<b>[7210-02-11] MAIN BLOCK</b>			
<b>IC's and TRANSISTORS</b>			
IC201	C1BB0000543	IC	
IC271	YESAM274	IC	
IC401	YESAM194	IC	
IC601	YESAM276	IC	
IC681	YESAM273	IC	
IC710	YESAM277	IC	
IC740	YESAM269	IC	
IC750	YESAM267	IC	
IC755	YESAM263	IC	
PA051	YESAP387	Tuner Pack	
Q052	YESAN082	Transistor	
Q055	YESAN082	Transistor	
Q262	YESAN085	Transistor	
Q266	YESAN085	Transistor	
Q362	YESAN085	Transistor	
Q366	YESAN085	Transistor	
Q411	YEAN2SK536TB	FET	
Q660	YESAN081	Transistor	
Q661	YESAN080	Transistor	
Q681	YESAN084	Transistor	
Q720	YESAN089	FET	
Q721	YESAN084	Transistor	
Q722	YESAN089	FET	
Q723	YESAN084	Transistor	
Q730	YESAN089	FET	
Q731	YESAN084	Transistor	
Q740	YESAN079	Transistor	
Q751	YESAN087	Transistor	
Q761	YESAN090	Transistor	
Q770	YESAN088	Transistor	
<b>DIODES</b>			

Ref. No.	Part No.	Part Name & Description	Remarks
D270-279	YESAD146	Diode	
D671	YESAD143	Diode	
D672	YESAD143	Diode	
D683	YESAD115	Zener Diode	
D684	YESAD115	Zener Diode	
D685	YESAD115	Zener Diode	
D689	YESAD115	Zener Diode	
D701	YESAD139	Diode	
D702	YESAD119	Zener Diode	
D710	YESAD144	Diode	
D720	YESAD146	Diode	
D721	YESAD146	Diode	
D740	YESAD146	Diode	
D741	YESAD118	Diode	
D750	YESAD141	Diode	
D760	YESAD146	Diode	
D761	YESAD140	Diode	
D770	YESAD123	Zener Diode	
D790	YESAD143	Diode	
<b>CAPACITORS</b>			
C051	YECUS1H470JC	Ceramic 47pF 50WV	
C053	YECUS1H103KX	Ceramic 0.01 $\mu$ F 50WV	
C055	YECUS1H103KX	Ceramic 0.01 $\mu$ F 50WV	
C059	F1J1H101A025	Ceramic 100pF 50WV	
C061	YESCC318	Ceramic 0.027 $\mu$ F 50WV	
C062	YESCC318	Ceramic 0.027 $\mu$ F 50WV	
C065	YECUS1H102KX	Ceramic 0.001 $\mu$ F 50WV	
C067	YECUS1H103KX	Ceramic 0.01 $\mu$ F 50WV	
C203	YESCC314	Electrolytic 3.3 $\mu$ F 50WV	
C208	YESCC199	Ceramic 0.33 $\mu$ F 16WV	
C210	YESCC228	Ceramic 0.1 $\mu$ F 16WV	
C220	YESCC375	Electrolytic 2.2 $\mu$ F 50WV	
C261	YESCC372	Electrolytic 4.7 $\mu$ F 25WV	
C263	YECUS1C474KX	Ceramic 0.47 $\mu$ F 16WV	
C265	YESCC372	Electrolytic 4.7 $\mu$ F 25WV	
C267	YECUS1C474KX	Ceramic 0.47 $\mu$ F 16WV	
C268	YECUS1C474KX	Ceramic 0.47 $\mu$ F 16WV	
C269	YECUS1C474KX	Ceramic 0.47 $\mu$ F 16WV	
C271	YECUS1H472KX	Ceramic 0.0047 $\mu$ F 50WV	
C272	YECUS1H472KX	Ceramic 0.0047 $\mu$ F 50WV	
C276	YESCC366	Electrolytic 10 $\mu$ F 16WV	
C277	YESCC229	Ceramic 1 $\mu$ F 16WV	
C278	YECUS1H104KX	Ceramic 0.1 $\mu$ F 50WV	
C279	YESCC368	Electrolytic 220 $\mu$ F 16WV	
C280	YESCC191	Ceramic 2.2 $\mu$ F 50WV	
C281	YESCC191	Ceramic 2.2 $\mu$ F 50WV	
C291	YECUS1H103KX	Ceramic 0.01 $\mu$ F 50WV	
C292	F1J1H101A025	Ceramic 100pF 50WV	
C303	YESCC314	Electrolytic 3.3 $\mu$ F 50WV	
C308	YESCC199	Ceramic 0.33 $\mu$ F 16WV	
C309	YESCC366	Electrolytic 10 $\mu$ F 16WV	
C310	YESCC313	Electrolytic 220 $\mu$ F 10WV	
C320	YESCC375	Electrolytic 2.2 $\mu$ F 50WV	
C325	YECUS1H221JC	Ceramic 220pF 50WV	
C361	YESCC372	Electrolytic 4.7 $\mu$ F 25WV	
C363	YECUS1C474KX	Ceramic 0.47 $\mu$ F 16WV	
C365	YESCC372	Electrolytic 4.7 $\mu$ F 25WV	
C367	YECUS1C474KX	Ceramic 0.47 $\mu$ F 16WV	
C368	YECUS1C474KX	Ceramic 0.47 $\mu$ F 16WV	
C369	YECUS1C474KX	Ceramic 0.47 $\mu$ F 16WV	
C371	YECUS1H472KX	Ceramic 0.0047 $\mu$ F 50WV	
C372	YECUS1H472KX	Ceramic 0.0047 $\mu$ F 50WV	
C375	YESCC373	Electrolytic 0.47 $\mu$ F 50WV	

Ref. No.	Part No.	Part Name & Description	Remarks
C378	YECUS1H104KX	Ceramic 0.1 $\mu$ F 50WV	
C380	YECUS1H104KX	Ceramic 0.1 $\mu$ F 50WV	
C401	YESCC219	Ceramic 10pF 50WV	
C402	F1J1H120A025	Ceramic 12pF 50WV	
C403	YESCC376	Electrolytic 100 $\mu$ F 6.3WV	
C405	F1J1H101A025	Ceramic 100pF 50WV	
C411	YECUS1H103KX	Ceramic 0.01 $\mu$ F 50WV	
C412	YECUS1E223KX	Ceramic 0.022 $\mu$ F 25WV	
C413	ECQV1H224JL2	Plastic Film 0.22 $\mu$ F 50WV	
C417	YESCC371	Electrolytic 680 $\mu$ F 16WV	
C425	YECUS1H103KX	Ceramic 0.01 $\mu$ F 50WV	
C430	YESCC313	Electrolytic 220 $\mu$ F 10WV	
C602	YESCC378	Electrolytic 1000 $\mu$ F 6.3WV	
C605	YECUS1H103KX	Ceramic 0.01 $\mu$ F 50WV	
C628	YESCC228	Ceramic 0.1 $\mu$ F 16WV	
C631	YESCC229	Ceramic 1 $\mu$ F 16WV	
C634	YECUS1H220JC	Ceramic 22pF 50WV	
C635	YECUS1H220JC	Ceramic 22pF 50WV	
C660	YESCC375	Electrolytic 2.2 $\mu$ F 50WV	
C672	YESCC377	Electrolytic 47 $\mu$ F 6.3WV	
C681	YESCC228	Ceramic 0.1 $\mu$ F 16WV	
C682	YECUS1H103KX	Ceramic 0.01 $\mu$ F 50WV	
C701	YESCC374	Electrolytic 01 $\mu$ F 50WV	
C710	YESCC284	Ceramic 0.18 $\mu$ F 50WV	
C711	YECUS1H103KX	Ceramic 0.01 $\mu$ F 50WV	
C740	YESCC369	Electrolytic 470 $\mu$ F 16WV	
C741	YESCC379	Electrolytic 150 $\mu$ F 6.3WV	
C751	YESCC370	Electrolytic 1000 $\mu$ F 16WV	
C752	YESCC365	Electrolytic 120 $\mu$ F 10WV	
C753	YESCC377	Electrolytic 47 $\mu$ F 6.3WV	
C755	YESCC228	Ceramic 0.1 $\mu$ F 16WV	
C756	YESCC380	Electrolytic 39 $\mu$ F 6.3WV	
C770	YESCC367	Electrolytic 100 $\mu$ F 16WV	
C771	F1J1H101A025	Ceramic 100pF 50WV	
C790	YECUS1H104KX	Ceramic 0.1 $\mu$ F 50WV	
R771	F1J1H101A025	Ceramic 100pF 50WV	
<b>RESISTORs</b>			
J801-805	YESRG132	Chip 0 $\Omega$ 1/4W	
J807-821	YESRG132	Chip 0 $\Omega$ 1/4W	
J823-829	YESRG132	Chip 0 $\Omega$ 1/4W	
J830	ERJ8GX0R00V	Chip 0 $\Omega$ 1/4W	
J831	YESRG132	Chip 0 $\Omega$ 1/4W	
J832	YESRG132	Chip 0 $\Omega$ 1/4W	
J833	YESRG132	Chip 0 $\Omega$ 1/4W	
J835	YESRG132	Chip 0 $\Omega$ 1/4W	
J837-840	YESRG132	Chip 0 $\Omega$ 1/4W	
J901	YESRG093	Chip 0 $\Omega$ 1/8W	
J902	YESRG093	Chip 0 $\Omega$ 1/8W	
J906	YESRG093	Chip 0 $\Omega$ 1/8W	
L290	YESRG093	Chip 0 $\Omega$ 1/8W	
L291	YESRG093	Chip 0 $\Omega$ 1/8W	
R050	YESRG127	Chip 5.6 $\Omega$ 1/8W	
R051	YESRG132	Chip 0 $\Omega$ 1/4W	
R052	YESRG094	Chip 100 $\Omega$ 1/8W	
R053	YESRG114	Chip 330 $\Omega$ 1/8W	
R058	YESRG093	Chip 0 $\Omega$ 1/8W	
R059	YESRG097	Chip 100k $\Omega$ 1/8W	
R060	YESRG115	Chip 33k $\Omega$ 1/8W	
R065	YESRG117	Chip 39k $\Omega$ 1/8W	
R202	YESRG184	Chip 4.3k $\Omega$ 1/8W	
R203	YESRG115	Chip 33k $\Omega$ 1/8W	

Ref. No.	Part No.	Part Name & Description	Remarks
R208	YESRG202	Chip 18k $\Omega$ 1/4W	
R225	YESRG205	Carbon 1k $\Omega$ 1/4W	
R226	YESRG205	Carbon 1k $\Omega$ 1/4W	
R261	YESRG103	Chip 180 $\Omega$ 1/8W	
R262	YESRG096	Chip 10k $\Omega$ 1/8W	
R263	YESRG124	Chip 560 $\Omega$ 1/8W	
R265	YESRG103	Chip 180 $\Omega$ 1/8W	
R266	YESRG096	Chip 10k $\Omega$ 1/8W	
R267	YESRG124	Chip 560 $\Omega$ 1/8W	
R275	YESRG109	Chip 22k $\Omega$ 1/8W	
R280	YESRG212	Chip 130 $\Omega$ 1/8W	
R290	YESRG093	Chip 0 $\Omega$ 1/8W	
R291	YESRG093	Chip 0 $\Omega$ 1/8W	
R302	YESRG184	Chip 4.3k $\Omega$ 1/8W	
R303	YESRG115	Chip 33k $\Omega$ 1/8W	
R308	YESRG202	Chip 18k $\Omega$ 1/4W	
R325	YESRG096	Chip 10k $\Omega$ 1/8W	
R326	YESRG096	Chip 10k $\Omega$ 1/8W	
R361	YESRG103	Chip 180 $\Omega$ 1/8W	
R362	YESRG096	Chip 10k $\Omega$ 1/8W	
R363	YESRG124	Chip 560 $\Omega$ 1/8W	
R365	YESRG103	Chip 180 $\Omega$ 1/8W	
R366	YESRG096	Chip 10k $\Omega$ 1/8W	
R367	YESRG124	Chip 560 $\Omega$ 1/8W	
R375	YESRG136	Chip 100k $\Omega$ 1/4W	
R390	YESRG132	Chip 0 $\Omega$ 1/4W	
R391	YESRG093	Chip 0 $\Omega$ 1/8W	
R401	YESRG133	Chip 10 $\Omega$ 1/4W	
R402	YESRG124	Chip 560 $\Omega$ 1/8W	
R403	YESRG100	Chip 1.5k $\Omega$ 1/8W	
R404	YESRG189	Chip 100 $\Omega$ 1/4W	
R405	YESRG206	Carbon 2.2k $\Omega$ 1/4W	
R406	YESRG208	Carbon 47k $\Omega$ 1/4W	
R407	YESRG104	Chip 1.8k $\Omega$ 1/8W	
R408	YESRG108	Chip 2.2k $\Omega$ 1/8W	
R409	YESRG108	Chip 2.2k $\Omega$ 1/8W	
R410	YESRG108	Chip 2.2k $\Omega$ 1/8W	
R411	YESRG108	Chip 2.2k $\Omega$ 1/8W	
R412	YESRG147	Chip 4.7k $\Omega$ 1/4W	
R413	YESRG148	Chip 47k $\Omega$ 1/4W	
R414	YESRG094	Chip 100 $\Omega$ 1/8W	
R417	YESRG094	Chip 100 $\Omega$ 1/8W	
R418	YESRG132	Chip 0 $\Omega$ 1/4W	
R601	YESRG147	Chip 4.7k $\Omega$ 1/4W	
R602	YESRG134	Chip 1k $\Omega$ 1/4W	
R603	YESRG120	Chip 47k $\Omega$ 1/8W	
R604	YESRG120	Chip 47k $\Omega$ 1/8W	
R608	YESRG119	Chip 4.7k $\Omega$ 1/8W	
R609	YESRG093	Chip 0 $\Omega$ 1/8W	
R610	YESRG214	Chip 180k $\Omega$ 1/8W	
R611	YESRG135	Chip 10k $\Omega$ 1/4W	
R612	YESRG189	Chip 100 $\Omega$ 1/4W	
R613	YESRG136	Chip 100k $\Omega$ 1/4W	
R614	YESRG136	Chip 100k $\Omega$ 1/4W	
R615	YESRG095	Chip 1k $\Omega$ 1/8W	
R616	YESRG095	Chip 1k $\Omega$ 1/8W	
R617	YESRG095	Chip 1k $\Omega$ 1/8W	
R618	YESRG095	Chip 1k $\Omega$ 1/8W	
R619	YESRG095	Chip 1k $\Omega$ 1/8W	
R620	YESRG095	Chip 1k $\Omega$ 1/8W	
R621	YESRG095	Chip 1k $\Omega$ 1/8W	
R622	YESRG097	Chip 100k $\Omega$ 1/8W	
R623	YESRG097	Chip 100k $\Omega$ 1/8W	
R624	YESRG097	Chip 100k $\Omega$ 1/8W	
R625	YESRG097	Chip 100k $\Omega$ 1/8W	
R626	YESRG097	Chip 100k $\Omega$ 1/8W	

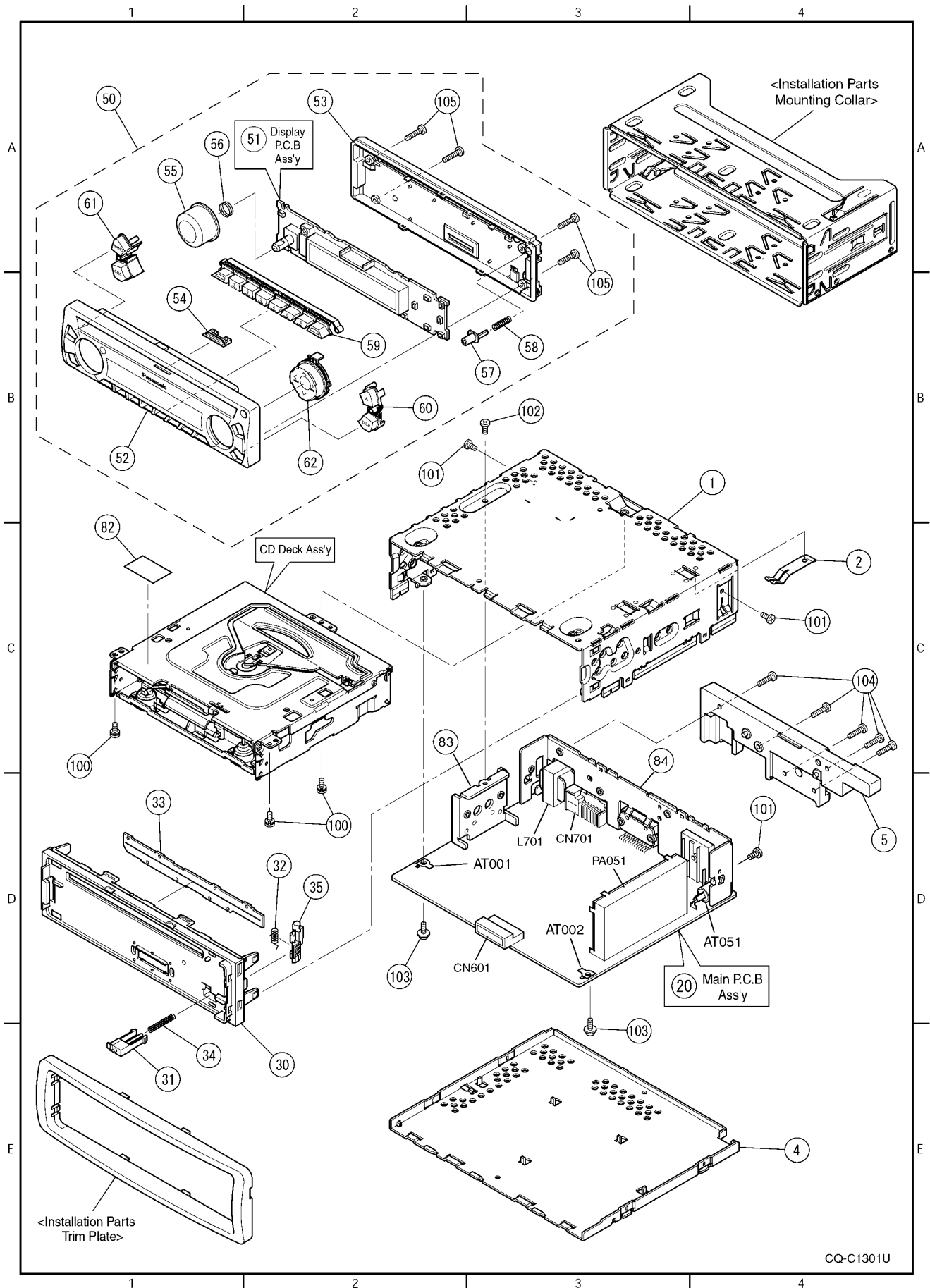
Ref. No.	Part No.	Part Name & Description	Remarks
R627	YESRG119	Chip 4.7kΩ 1/8W	
R628	YESRG119	Chip 4.7kΩ 1/8W	
R629	YESRG119	Chip 4.7kΩ 1/8W	
R630	YESRG095	Chip 1kΩ 1/8W	
R634	YESRG126	Chip 560k Ω 1/8W	
R660	YESRG111	Chip 270Ω 1/8W	
R661	YESRG125	Chip 5.6kΩ 1/8W	
R662	YESRG120	Chip 47kΩ 1/8W	
R668	YESRG132	Chip 0Ω 1/4W	
R671	YESRG139	Chip 180kΩ 1/4W	
R672	YESRG096	Chip 10kΩ 1/8W	
R673	YESRG134	Chip 1kΩ 1/4W	
R674	YESRG147	Chip 4.7kΩ 1/4W	
R676	YESRG147	Chip 4.7kΩ 1/4W	
R677	YESRG095	Chip 1kΩ 1/8W	
R678	YESRG118	Chip 470Ω 1/8W	
R679	YESRG118	Chip 470Ω 1/8W	
R680	YESRG118	Chip 470Ω 1/8W	
R681	YESRG118	Chip 470Ω 1/8W	
R682	YESRG133	Chip 10Ω 1/4W	
R686	YESRG093	Chip 0Ω 1/8W	
R690	YESRG095	Chip 1kΩ 1/8W	
R691	YESRG096	Chip 10kΩ 1/8W	
R692	YESRG112	Chip 2.7kΩ 1/8W	
R693	YESRG112	Chip 2.7kΩ 1/8W	
R694	YESRG134	Chip 1kΩ 1/4W	
R695	YESRG112	Chip 2.7kΩ 1/8W	
R696	YESRG219	Chip 5.1kΩ 1/4W	
R697	YESRG219	Chip 5.1kΩ 1/4W	
R698	YESRG219	Chip 5.1kΩ 1/4W	
R699	YESRG217	Chip 1.8kΩ 1/4W	
R701	YESRG207	Carbon 3.3kΩ 1/4W	
R703	YESRG099	Chip 12kΩ 1/8W	
R704	YESRG098	Chip 11kΩ 1/8W	
R710	YESRG110	Chip 220kΩ 1/8W	
R711	YESRG129	Chip 680kΩ 1/8W	
R712	YESRG120	Chip 47kΩ 1/8W	
R713	YESRG097	Chip 100kΩ 1/8W	
R714	YESRG095	Chip 1kΩ 1/8W	
R715	YESRG095	Chip 1kΩ 1/8W	
R716	YESRG120	Chip 47kΩ 1/8W	
R720	YESRG131	Chip 8.2kΩ 1/8W	
R721	YESRG218	Chip 4.3kΩ 1/4W	
R722	YESRG191	Chip 22kΩ 1/4W	
R723	YESRG131	Chip 8.2kΩ 1/8W	
R724	YESRG184	Chip 4.3kΩ 1/8W	
R725	YESRG191	Chip 22kΩ 1/4W	
R730	YESRG184	Chip 4.3kΩ 1/8W	
R731	YESRG131	Chip 8.2kΩ 1/8W	
R740	YESRG109	Chip 22kΩ 1/8W	
R751	YESRG120	Chip 47kΩ 1/8W	
R752	YESRG100	Chip 1.5kΩ 1/8W	
R760	YESRG095	Chip 1kΩ 1/8W	
R761	YESRG200	Chip 3.3kΩ 1/8W	
R762	YESRG095	Chip 1kΩ 1/8W	
R770	YESRG095	Chip 1kΩ 1/8W	
R791	YESRG118	Chip 470Ω 1/8W	
<b>CONNECTORS</b>			
CN250	YESAE373	Jack, RCA * 4	
CN601	YESAE362	Connector 12P	
CN661	YESAE344	Connector 18P	
CN701	YESAE351	Connector 16P	

Ref. No.	Part No.	Part Name & Description	Remarks
<b>COILS</b>			
L051	YESLQ035	Inductor	
L052	YESLQ028	Inductor	
L401	YESLQ017	Inductor	
L402	YESLQ017	Inductor	
L680	YESLQ027	Inductor	
L701	YESLT030	Inductor	
L710	YESLQ012	Inductor	
<b>CRYSTALS</b>			
XL401	YESXL026	Crystal	
XL601	YESXL028	Crystal	
XL602	YESXL027	Crystal	
<b>POSISTOR</b>			
PH701	YESRTD011	Posistor	
<b>SERGE PROTECTOR VARISTOR</b>			
Z050	YESRTD013	Serge Protector	
Z701	YESRTD012	Varistor	
<b>[7210-05-11] DISPLAY BLOCK</b>			
<b>IC's and TRANSISTORS</b>			
IC901	YEAMLC75854T	IC	
IC902	YESAM264	IC	
Q901	YESAN083	Transistor	
Q902	B1GDCFJJ0008	Transistor	
<b>DIODES</b>			
D901-905	YESAD125	LED	
D908-917	YESAD125	LED	
D920	YESAD145	LED	
D931	YESAD147	Zener Diode	
<b>CAPACITORS</b>			
C901	YESCC385	Ceramic 0.1μF 16WV	
C902	YESCC385	Ceramic 0.1μF 16WV	
C903	YESCC293	Ceramic 560μF 50WV	
C904	YESCC385	Ceramic 0.1μF 16WV	
C905	YESCC385	Ceramic 0.1μF 16WV	
C906	YESCC386	Ceramic 0.001μF 50WV	
C908	YESCC385	Ceramic 0.1μF 16WV	
<b>RESISTORS</b>			
R901	YESRG211	Chip 4.7Ω 1/10W	
R902	YESRG170	Chip 47kΩ 1/10W	
R903	YESRG210	Chip 470Ω 1/10W	
R904	YESRG159	Chip 1kΩ 1/10W	
R905	YESRG159	Chip 1kΩ 1/10W	
R906	YESRG159	Chip 1kΩ 1/10W	
R908	YESRG093	Chip 0Ω 1/8W	
R909	YESRG159	Chip 1kΩ 1/10W	
R910	YESRG209	Chip 2.2kΩ 1/10W	
R911	YESRG093	Chip 0Ω 1/8W	
R912	YESRG159	Chip 1kΩ 1/10W	
R913	YESRG159	Chip 1kΩ 1/10W	
R916	YESRG093	Chip 0Ω 1/8W	
R921	YESRG041	Chip 270Ω 1/4W	

Ref. No.	Part No.	Part Name & Description	Remarks
R950	YESRG215	Chip 430Ω 1/8W	
R951	YESRG215	Chip 430Ω 1/8W	
R952	YESRG215	Chip 430Ω 1/8W	
R953	YESRG201	Chip 820Ω 1/8W	
R954	YESRG215	Chip 430Ω 1/8W	
R958	YESRG118	Chip 470Ω 1/8W	
<b>CONNECTOR</b>			
CN901	YESAE372	Connector 12P	
<b>SWITCHes</b>			
SW901	YESAS122	Switch	
SW902-917	K0H1BA000445	Switch	
<b>LCD</b>			
LD901	YESXDCM021	LCD	
<b>Accessories</b>			
<b>PRINTING</b>			
	—	Operating Instructions	TSN
<b>INSTALLATION PARTS</b>			
	YEP0FZ5698	Installation Kit (Lock Cancel Plate , Mounting Bolt, Rubber Bushing)	
	YEFX0217263	Mounting Collar	
	YEF05657	Trim Plate	
	YESAJ01223	Power Connector	
	EUR7641010	Remote Control Unit	
	CR2025/1F	Lithium Battery	⚠
<b>MECHANICAL PARTS</b>			
<b>MISCELLANEOUS</b>			
AT001	YESAT01031	Earth Terminal	
AT002	YESAT01031	Earth Terminal	
AT051	YM104C700ZA	Antenna Terminal	
1	YESFA01073	Main Chassis	
2	YESFX005155	Ground Contactor	
4	YESFA05037	Bottom Cover	
5	YESFF01084	Heat Sink	
20	YESAP389	Main PCB Ass'y	RTL
30	YESFC02156	Escutcheon	
31	YESFE13214	Push Button	
32	YESFX005150	Hook Spring	
33	YESFS01089	Dust Felt	
34	YESFX005156	Push Spring	
35	YESFX999064	Hook	
50	YESSDF0145	Removable Face Plate Unit	RTL
51	YESAP391	Display PCB Ass'y	RTL
52	YESFC02158	Front Cover Ass'y	
53	YESFA07012	Rear Cover	
54	YESFX001033	CD Indicator	
55	YESFE02022	Knob, VOL	
56	YESFX005138	Knob Spring	
57	YESFE13219	Rease Button	
58	YESFX005152	Spring, Open	
59	YESFE13217	Preset Button	
60	YESFE13216	Eject/DISP Button	

Ref. No.	Part No.	Part Name & Description	Remarks
61	YESFE13215	BAND/SRC Button	
62	YESFE13218	TUNE/TRACK Button	
82	YESFM01080	Laser Seal	
83	YESFX021140	Regulator Bracket	
84	YESFA08034	Rear Bracket	
100	YESJS01189	Screw, 2.6 * 4	
101	YESJS01188	Bind Screw 2.6 * 5	
102	YESJT03074	Bind Screw 2.6 * 8	
103	YESJS01190	Screw, 2.6 * 6	
104	YESJS01187	Bind Screw 2.6 * 10	
105	YESJT03075	Tapping Screw 2 * 8	

# 15 EXPLODED VIEW (Unit) [CQ-C1301U]



CQ-C1301U

# 16 CD PLAYER PARTS LIST

Notes :

1. Be sure to make your orders of replacement parts according to this list.
2. Important safety notice: Components, identified by  $\Delta$  mark have special characteristics important for safety. When replacing any of these components, use only manufacturer's specified parts.
3. Location keys in the remarks column indicates the general location of the parts shown in the exploded drawing, as in a road map.
4. The marking (RTL) indicates that Retention Time is limited for this item. After the discontinuation of assembly in production, the item will continue to be available for a specific period of time. The retention period of availability is dependent on the type of assembly, and in accordance with the laws governing part and product retention. After the end of this period, the assembly will no longer be available.
  - Order intake period is basically six months after the first shipment.

Ref. No.	Part No.	Part Name & Description	Remarks
<b>[3032-14-13] CD Servo Block</b>			
<b>IC's and TRANSISTORS</b>			
IC101	YESAM272	IC	
IC201	YESAM266	IC	
IC401	YESAM275	IC	
IC402	YESAM271	IC	
IC403	YESAM171	IC	
IC404	YESAM178	IC	
IC405	YESAM270	IC	
Q101	YESAN086	Transistor	
Q201	YESAN086	Transistor	
<b>CAPACITORS</b>			
C302	YESCC203	Ceramic 220pF 50WV	
C101	YESCC187	Ceramic 0.1 $\mu$ F 25WV	
C102	YESCC384	Ceramic 0.033 $\mu$ F 50WV	
C103	YESCC206	Ceramic 0.047 $\mu$ F 25WV	
C104	YESCC207	Ceramic 0.001 $\mu$ F 50WV	
C106	YESCC204	Ceramic 330pF 50WV	
C107	YESCC187	Ceramic 0.1 $\mu$ F 25WV	
C108	YESCC206	Ceramic 0.047 $\mu$ F 25WV	
C110	YESCC383	Ceramic 0.33 $\mu$ F 10WV	
C112	YESCC209	Ceramic 0.0033 $\mu$ F 50WV	
C113	YESCC187	Ceramic 0.1 $\mu$ F 25WV	
C114	YESCC298	Ceramic 0.015 $\mu$ F 50WV	
C115	YESCC187	Ceramic 0.1 $\mu$ F 25WV	
C116	YESCC382	Ceramic 680pF 50WV	
C117	YESCC207	Ceramic 0.001 $\mu$ F 50WV	
C118	YESCC187	Ceramic 0.1 $\mu$ F 25WV	
C119	YESCC187	Ceramic 0.1 $\mu$ F 25WV	
C120	YESCC187	Ceramic 0.1 $\mu$ F 25WV	
C121	YESCC187	Ceramic 0.1 $\mu$ F 25WV	
C122	F1H1H101A231	Ceramic 100pF 50WV	
C124	YESCC187	Ceramic 0.1 $\mu$ F 25WV	
C125	YESCC187	Ceramic 0.1 $\mu$ F 25WV	
C151	YESCC388	Electrolytic 100 $\mu$ F 16WV	
C154	YESCC390	Electrolytic 220 $\mu$ F 10WV	
C204	YESCC183	Ceramic 0.0022 $\mu$ F 50WV	
C205	YESCC183	Ceramic 0.0022 $\mu$ F 50WV	
C206	YESCC187	Ceramic 0.1 $\mu$ F 25WV	

Ref. No.	Part No.	Part Name & Description	Remarks
C210	YESCC187	Ceramic 0.1 $\mu$ F 25WV	
C212	YESCC210	Ceramic 1 $\mu$ F 16WV	
C251	YESCC390	Electrolytic 220 $\mu$ F 10WV	
C252	YESCC390	Electrolytic 220 $\mu$ F 10WV	
C253	YESCC389	Electrolytic 470 $\mu$ F 6.3WV	
C301	YESCC203	Ceramic 220pF 50WV	
C303	YESCC185	Ceramic 0.01 $\mu$ F 50WV	
C304	YESCC185	Ceramic 0.01 $\mu$ F 50WV	
C305	YESCC382	Ceramic 680pF 50WV	
C306	YESCC382	Ceramic 680pF 50WV	
C307	YESCC187	Ceramic 0.1 $\mu$ F 25WV	
C351	YESCC381	Ceramic 10 $\mu$ F 6.3WV	
C352	YESCC381	Ceramic 10 $\mu$ F 6.3WV	
C353	YESCC391	Electrolytic 100 $\mu$ F 16WV	
C354	YESCC390	Electrolytic 220 $\mu$ F 10WV	
C401	YESCC187	Ceramic 0.1 $\mu$ F 25WV	
C402	YESCC187	Ceramic 0.1 $\mu$ F 25WV	
C403	YESCC187	Ceramic 0.1 $\mu$ F 25WV	
C404	YESCC187	Ceramic 0.1 $\mu$ F 25WV	
C405	YESCC187	Ceramic 0.1 $\mu$ F 25WV	
C406	YESCC187	Ceramic 0.1 $\mu$ F 25WV	
C407	YESCC187	Ceramic 0.1 $\mu$ F 25WV	
C408	YESCC210	Ceramic 1 $\mu$ F 16WV	
C409	YESCC187	Ceramic 0.1 $\mu$ F 25WV	
C410	YESCC387	Ceramic 0.47 $\mu$ F 25WV	
C411	YESCC187	Ceramic 0.1 $\mu$ F 25WV	
C412	YESCC187	Ceramic 0.1 $\mu$ F 25WV	
C413	YESCC187	Ceramic 0.1 $\mu$ F 25WV	
C414	YESCC187	Ceramic 0.1 $\mu$ F 25WV	
C415	YESCC187	Ceramic 0.1 $\mu$ F 25WV	
C416	YESCC210	Ceramic 1 $\mu$ F 16WV	
C417	YESCC187	Ceramic 0.1 $\mu$ F 25WV	
C418	YESCC210	Ceramic 1 $\mu$ F 16WV	
C419	YESCC187	Ceramic 0.1 $\mu$ F 25WV	
C421	YESCC210	Ceramic 1 $\mu$ F 16WV	
C422	YESCC187	Ceramic 0.1 $\mu$ F 25WV	
C426	YESCC187	Ceramic 0.1 $\mu$ F 25WV	
C427	YESCC187	Ceramic 0.1 $\mu$ F 25WV	
C451	YESCC389	Electrolytic 470 $\mu$ F 6.3WV	
C452	YESCC389	Electrolytic 470 $\mu$ F 6.3WV	
C453	YESCC389	Electrolytic 470 $\mu$ F 6.3WV	
C454	YESCC388	Electrolytic 100 $\mu$ F 16WV	
<b>RESISTORS</b>			
J101-105	ERJ8GX0R00V	Chip 0 $\Omega$ 1/4W	
L102	YESRG241	Chip, 0 $\Omega$	
L304	YESRG241	Chip, 0 $\Omega$	
R101	YESRG234	Chip 4.7 $\Omega$ 1/10W	
R102	ERJ3GEY0R00V	Chip 0 $\Omega$ 1/4W	
R103	YESRG227	Chip 2.2k $\Omega$ 1/10W	
R104	YESRG227	Chip 2.2k $\Omega$ 1/10W	
R105	ERJ3GEY0R00V	Chip 0 $\Omega$ 1/4W	
R106	YESRG230	Chip 3.3k $\Omega$ 1/10W	
R107	YESRG230	Chip 3.3k $\Omega$ 1/10W	
R108	ERJ3GEY0R00V	Chip 0 $\Omega$ 1/4W	
R109	YESRG238	Chip 56k $\Omega$ 1/10W	
R110	YESRG228	Chip 22k $\Omega$ 1/10W	
R114	YESRG240	Chip 82k $\Omega$ 1/10W	
R116	YESRG239	Chip 820 $\Omega$ 1/10W	
R117	ERJ3GEY0R00V	Chip 0 $\Omega$ 1/4W	
R118	YESRG223	Chip 10k $\Omega$ 1/10W	
R119	ERJ3GEY0R00V	Chip 0 $\Omega$ 1/4W	
R120	ERJ3GEY0R00V	Chip 0 $\Omega$ 1/4W	
R121	ERJ3GEY0R00V	Chip 0 $\Omega$ 1/4W	

Ref. No.	Part No.	Part Name & Description	Remarks
R122	ERJ3GEY0R00V	Chip 0Ω 1/4W	
R123	ERJ3GEY0R00V	Chip 0Ω 1/4W	
R124	YESRG224	Chip 100kΩ 1/10W	
R125	YESRG226	Chip 220Ω 1/10W	
R126	YESRG226	Chip 220Ω 1/10W	
R127	YESRG226	Chip 220Ω 1/10W	
R128	YESRG226	Chip 220Ω 1/10W	
R201	YESRG225	Chip 1.5kΩ 1/10W	
R202	ERJ3GEY0R00V	Chip 0Ω 1/4W	
R204	ERJ3GEY0R00V	Chip 0Ω 1/4W	
R205	ERJ3GEY0R00V	Chip 0Ω 1/4W	
R206	YESRG231	Chip 33kΩ 1/10W	
R207	ERJ3GEY0R00V	Chip 0Ω 1/4W	
R208	YESRG233	Chip 47kΩ 1/10W	
R209	ERJ3GEY0R00V	Chip 0Ω 1/4W	
R215	YESRG237	Chip 5.6kΩ 1/10W	
R216	YESRG237	Chip 5.6kΩ 1/10W	
R217	YESRG222	Chip 1kΩ 1/10W	
R218	YESRG237	Chip 5.6kΩ 1/10W	
R301	YESRG229	Chip 330Ω 1/10W	
R302	YESRG229	Chip 330Ω 1/10W	
R305	YESRG222	Chip 1kΩ 1/10W	
R306	YESRG222	Chip 1kΩ 1/10W	
R307	YESRG233	Chip 47kΩ 1/10W	
R308	YESRG233	Chip 47kΩ 1/10W	
R401	YESRG223	Chip 10kΩ 1/10W	
R402	YESRG223	Chip 10kΩ 1/10W	
R403	YESRG223	Chip 10kΩ 1/10W	
R404	YESRG233	Chip 47kΩ 1/10W	
R405	YESRG232	Chip 4.7kΩ 1/10W	
R406	YESRG226	Chip 220Ω 1/10W	
R407	YESRG230	Chip 3.3kΩ 1/10W	
R408	ERJ3GEY0R00V	Chip 0Ω 1/4W	
R409	ERJ3GEY0R00V	Chip 0Ω 1/4W	
R410	YESRG223	Chip 10kΩ 1/10W	
R411	YESRG226	Chip 220Ω 1/10W	
R412	YESRG230	Chip 3.3kΩ 1/10W	
R413	YESRG232	Chip 4.7kΩ 1/10W	
R414	YESRG232	Chip 4.7kΩ 1/10W	
R415	YESRG232	Chip 4.7kΩ 1/10W	
R416	YESRG232	Chip 4.7kΩ 1/10W	
R417	YESRG223	Chip 10kΩ 1/10W	
R419	YESRG226	Chip 220Ω 1/10W	
R420	YESRG236	Chip 560Ω 1/10W	
R421	ERJ3GEY0R00V	Chip 0Ω 1/4W	
R422	YESRG224	Chip 100kΩ 1/10W	
R423	YESRG235	Chip 56Ω 1/10W	
R424	YESRG235	Chip 56Ω 1/10W	
R425	YESRG223	Chip 10kΩ 1/10W	
R426	YESRG223	Chip 10kΩ 1/10W	
R427	YESRG222	Chip 1kΩ 1/10W	
R428	YESRG222	Chip 1kΩ 1/10W	
R429	YESRG222	Chip 1kΩ 1/10W	
R430	YESRG222	Chip 1kΩ 1/10W	
R431	YESRG222	Chip 1kΩ 1/10W	
R432	YESRG222	Chip 1kΩ 1/10W	
R433	YESRG227	Chip 2.2kΩ 1/10W	
R435	YESRG221	Chip 100Ω 1/10W	
R436	YESRG221	Chip 100Ω 1/10W	
R437	YESRG221	Chip 100Ω 1/10W	
R438	YESRG221	Chip 100Ω 1/10W	
R439	YESRG221	Chip 100Ω 1/10W	
R440	YESRG221	Chip 100Ω 1/10W	
R441	YESRG221	Chip 100Ω 1/10W	

Ref. No.	Part No.	Part Name & Description	Remarks
<b>CONNECTORS</b>			
CN101	YESAE345	Connector 18P	
CN102	YESAE350	Connector 16P	
<b>COILS</b>			
L101	YESLQ011	Inductor	
L201	YESLQ034	Inductor	
L301	YESLQ036	Inductor	
L302	YESLQ036	Inductor	
L401	YESLQ014	Inductor	
L402	YESLQ014	Inductor	
L403	YESLQ014	Inductor	
L404	YESLQ033	Inductor	
L405	YESLQ033	Inductor	
L406	YESLQ033	Inductor	
<b>CRYSTAL</b>			
X401	YESXL018	Crystal	
<b>RESISTOR NETWORKS</b>			
RA401	YESXA003	Resistor Network 56Ω * 4	
RA402	YESXA003	Resistor Network 56Ω * 4	
RA403	YESXB014	Resistor Network 0Ω * 4	
RA404	YESXB014	Resistor Network 0Ω * 4	
RA405-412	YESXA003	Resistor Network 56Ω * 4	
<b>MECHANICAL PARTS</b>			
<b>MISCELLANEOUS</b>			
1	YESFX046136	Frame	
2	YESFX046137	Top Cover	
3	YERFS04003	Damper F	
4	YERFS04004	Damper R	
11	YESFX046138	Chassis Rivet Ass'y	
12	YERFX046001	Change Plate Rivet Ass'y	
13	YERFX007001	Clamper Ass'y	
14	YESAK01041	Spindle Motor Ass'y	
15	YERFX046002	Clamper Arm	
16	YERFX005001	Changer Gear Spring	
17	YERFX03001	Changer Gear 2	
18	YERFX03002	Feed Gear	
19	YERFX03003	Feed Rack M	
20	YERFX046003	Changer Lock Lever	
21	YERFW04001	Feed Switch Holder	
22	YERFW04002	PU Shaft Holder	
23	YERFX005002	Clamper Sub Spring	
24	YERFW04003	FD Sub Holder	
25	YESFX046139	Top Plate	
26	YERFX046004	Select Lock Arm	
27	YERFX046006	Slide Hook	
28	YERFW01001	PU Shaft	
29	YERFX005003	Clamper Arm Spring	
30	YERFX005004	Select Lock Arm Spring	
31	YERFX005013	Suspension Spring	
32	YESFX046140	Select Arm R	
33	YERFX03004	Link Plate	
34	YESFX005137	Link Plate Spring	
35	YERFS01001	Cushion F	
36	YERFS01002	Cushion R	
37	YERFX005014	Feed Spring Plate	
38	YERFX046005	Trigger Arm	

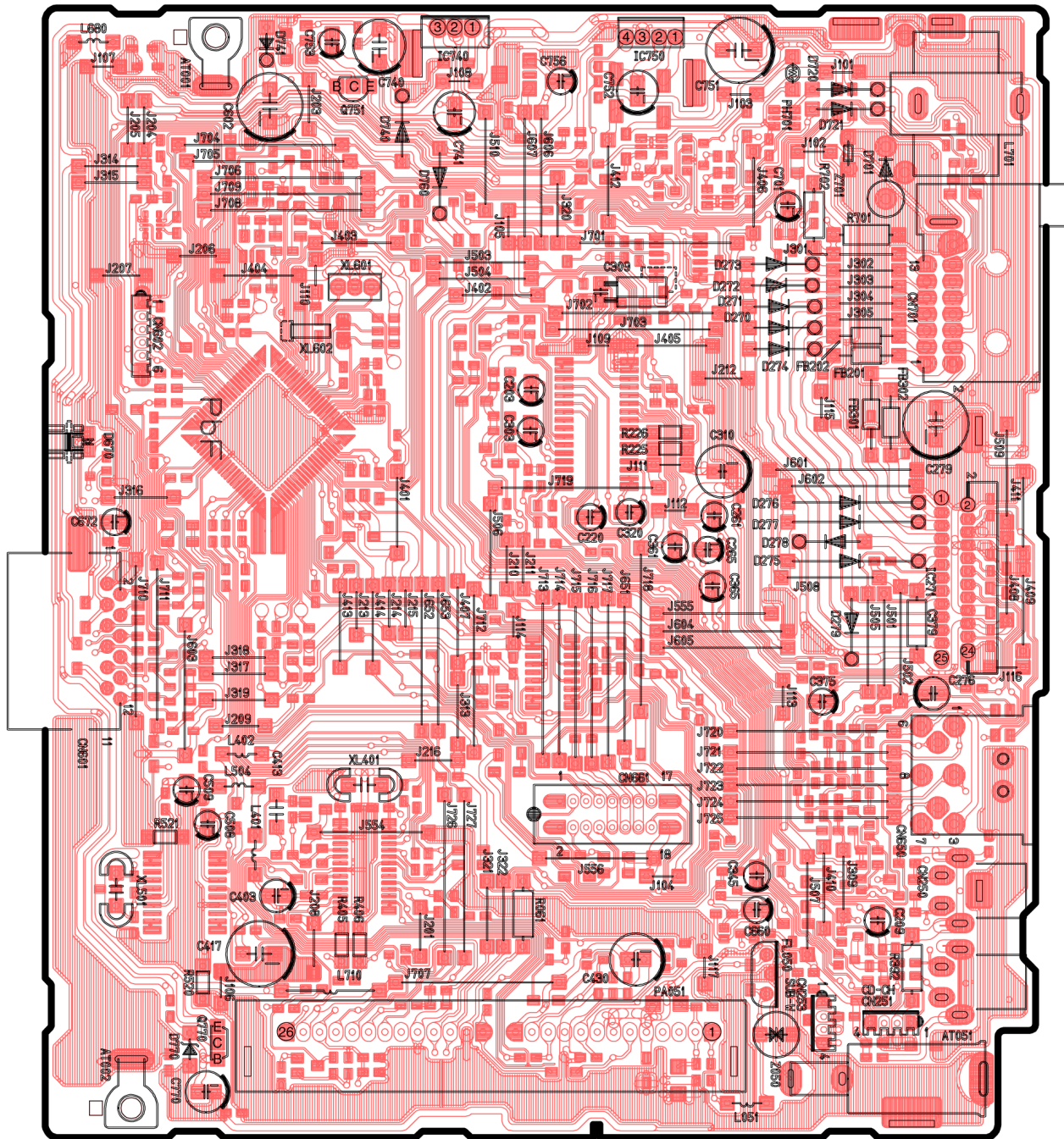
Ref. No.	Part No.	Part Name & Description	Remarks
43	YERFX046008	Select Plate L	
44	YERFX046009	Select Plate R	
45	YERFX046010	Select Piece L	
46	YERFX046011	Select Piece R	
61	YESSZCDM023	Optical Pick-up Ass'y	
62	YERAS0001	Detect Switch	
71	YESAP392	Servo PCB Ass'y	RTL
72	YERAS0002	Mode Switch	
73	YESAJ07014	LD Wire	
74	YESAJ07015	SW Wire	
75	YESAJ07016	SP Wire	
77	YERFX999001	Wire Clamper	
78	YESFX024021	Wire Tube SPM	
79	YESFX024022	Wire Tube MSW	
81	YERFX03005	Roller Shaft Ass'y	
82	YERFX046012	Loading Gear Plate Rivet Ass'y	
83	YERFX046013	Loading Plate Ass'y	
84	YESFX046173	Lock Arm Rivet Ass'y	
85	YESAK01042	Loading/Feed Motor Ass'y	
86	YERFX03006	Loading Gear 1	
87	YERFX03007	Loading Gear 2	
88	YERFX03008	Loading Gear 3	
89	YERFX03009	Loading Gear 4	
90	YERFX03010	Loading Gear 5	
91	YERFX03011	Loading Gear 6	
92	YERFX03012	Loading Gear 7	
93	YESFW05023	Roller Guide	
94	YERFX005007	Roller Guide Spring	
95	YERFX046015	Disk Stopper Arm	
96	YERFX005008	Disk Stop Arm Spring	
97	YERFX046016	LD Gear Bracket	
98	YESFX046174	L Slide Plate	
99	YERFX005009	Loading Plate Spring	
100	YESFX046150	Loading Roller	
101	YESJS01175	Collar Screw	
111	YERJT01001	Tapping Screw 2*3	
112	YERJT01002	Tapping Screw 2*4	
113	YEJT03117	Tapping Bind Screw 2*4	
114	YERJS01002	Camera Screw 1.7*1.8	
115	YERJS01003	Camera Screw 2*2	
116	YERJS01004	Camera Tapping Screw 1.7*5	
118	YESJS01148	Screw 2*4	
121	YERJW01001	P Washer 3.5*8*0.3	
122	YERJW01002	HL Washer 3.5*8*0.3	
123	YERJW01003	Lumilar Washer 3.1*6*0.1	
124	YEJE01028	E Ring S 1.5	
125	YERJW01005	P Washer 2.1*4*0.3	





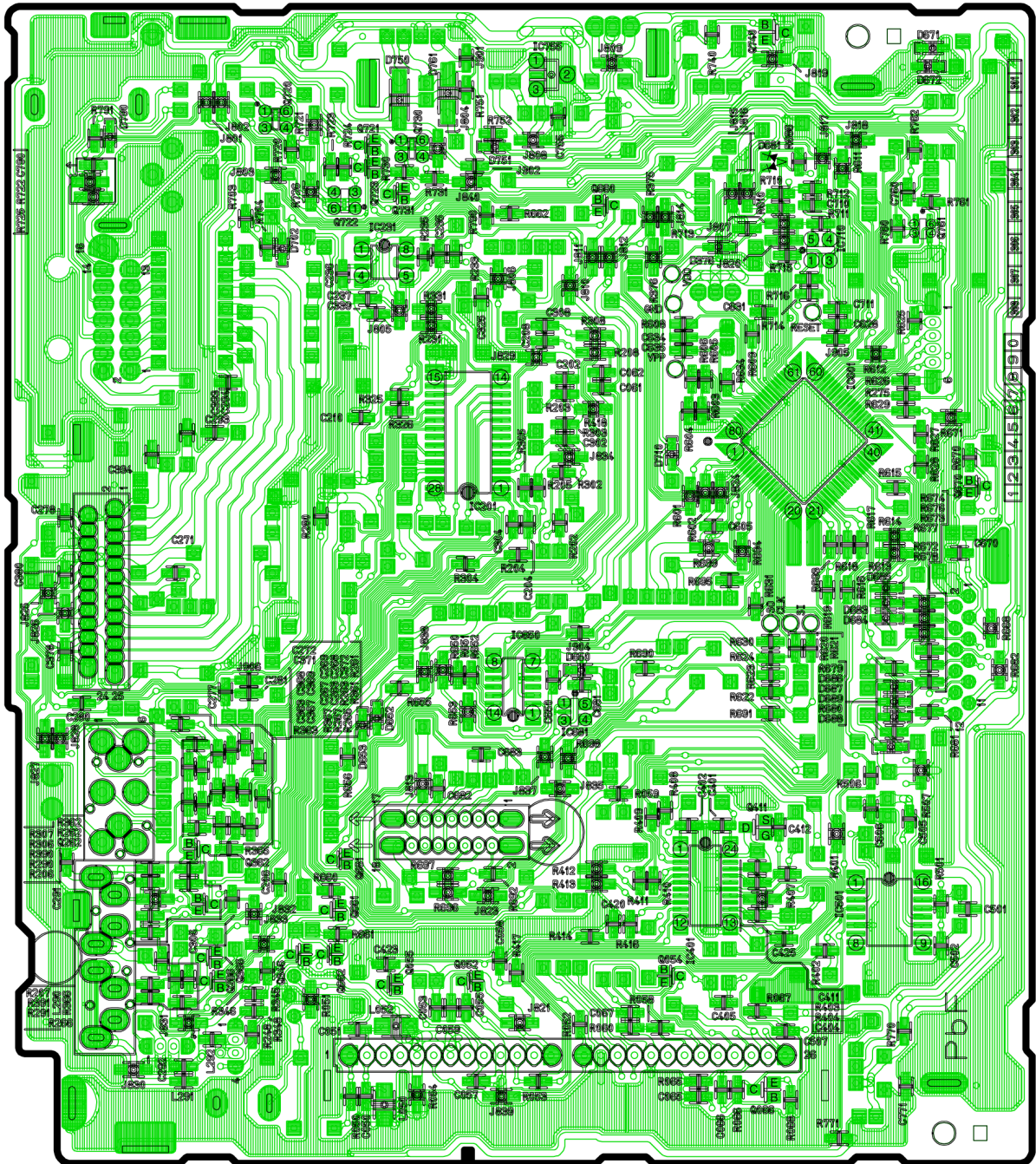
# 18 WIRING DIAGRAM

## 18.1. Main Block (Top View)



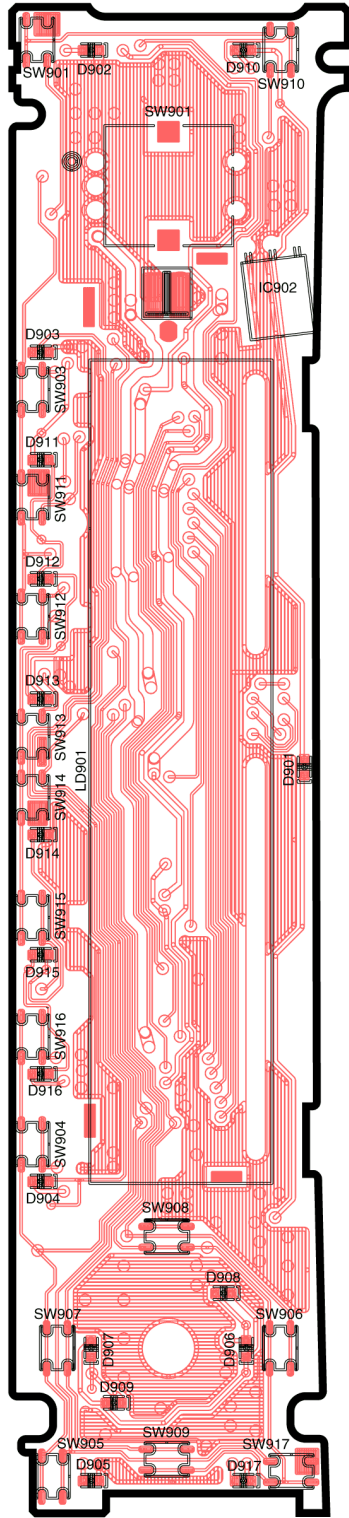
[7210-02-11] [Top View]

## 18.2. Main Block (Bottom View)

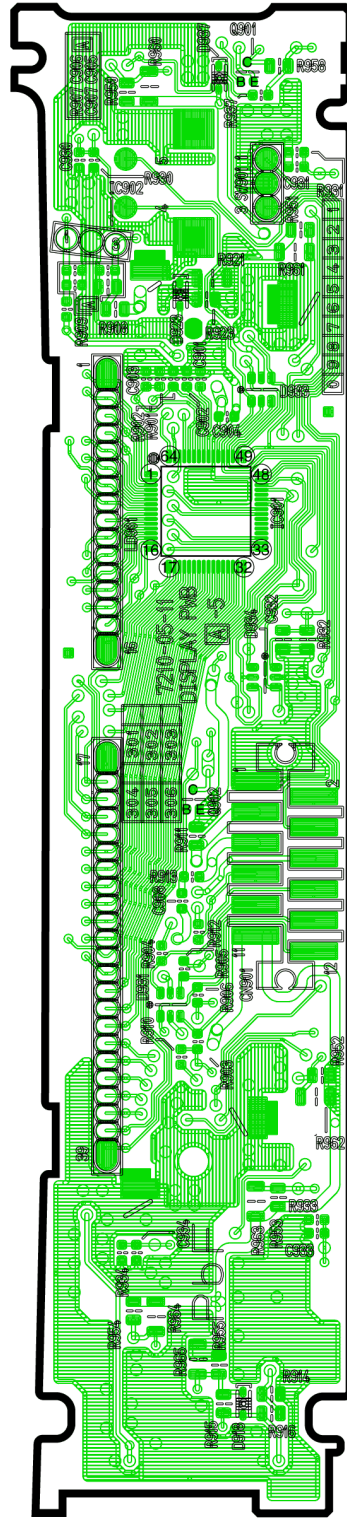


[7210-02-11] [Bottom View]

### 18.3. Display Block



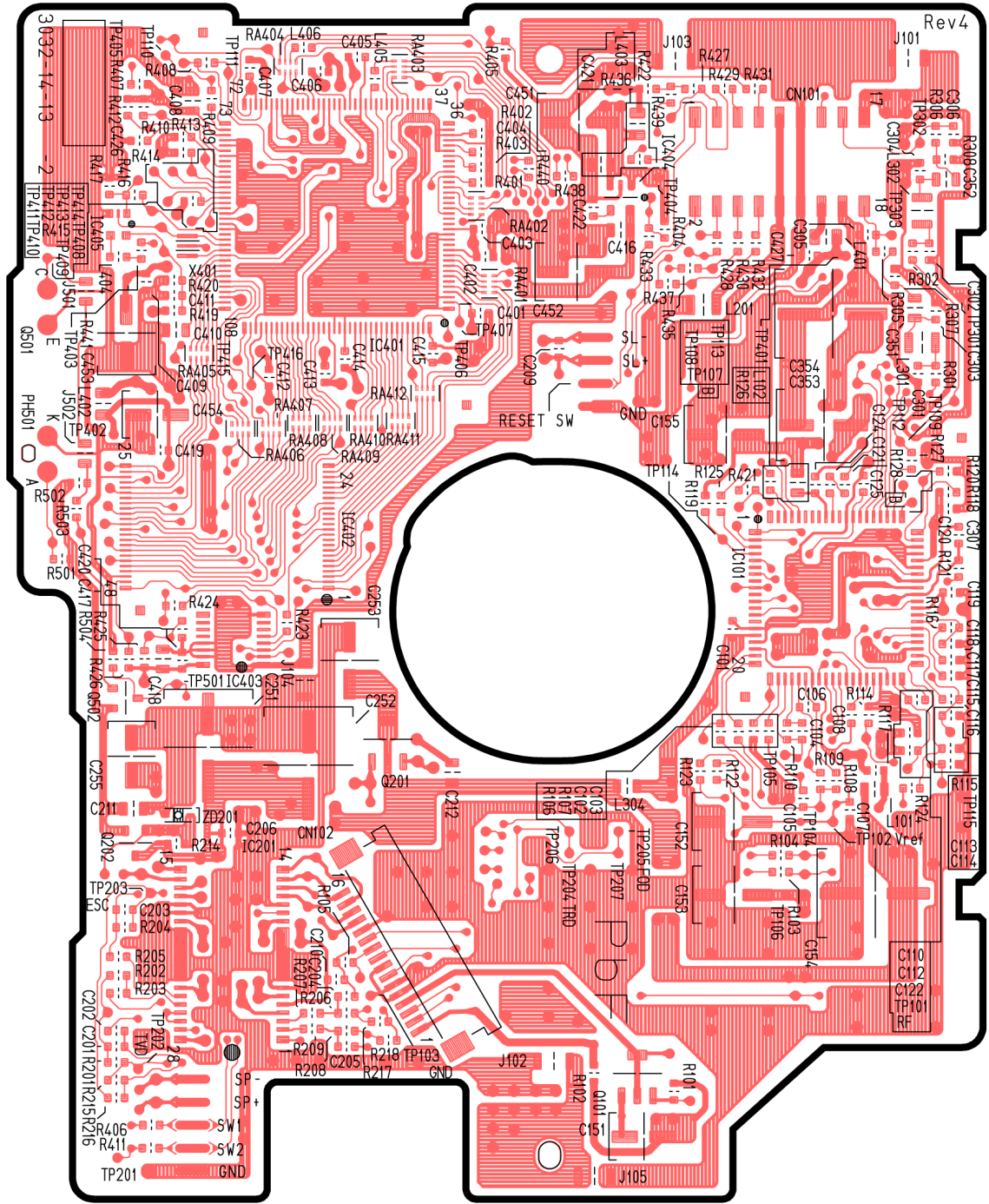
[7210-05-11]  
[Top View]



[7210-05-11]  
[Bottom View]

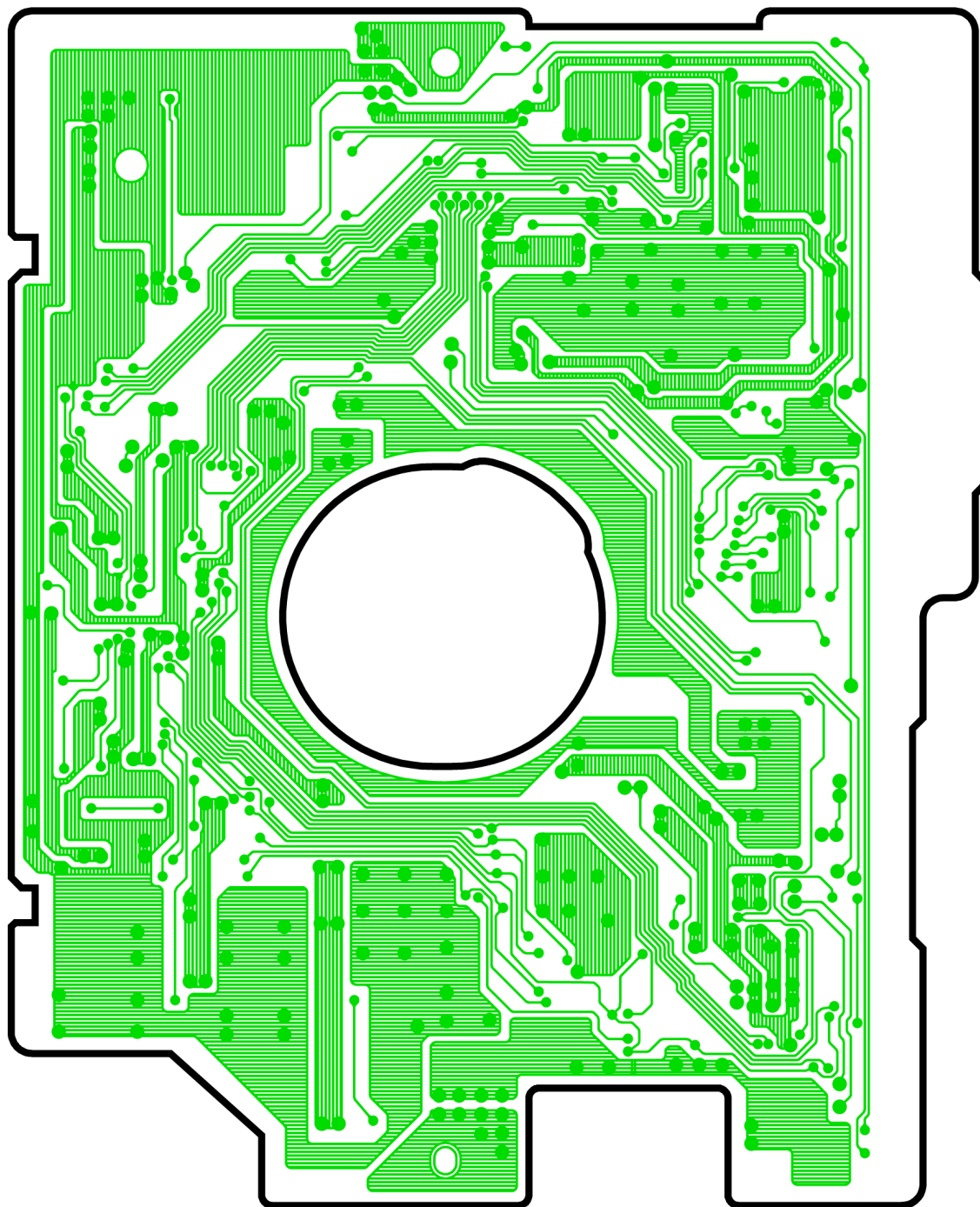
CQ-C1401U,CQ-C1301U DISPLAY P.C.B

# 18.4. CD Servo Block (Top View)



[3032-14-13] [Top View]

### 18.5. CD Servo Block (Bottom View)

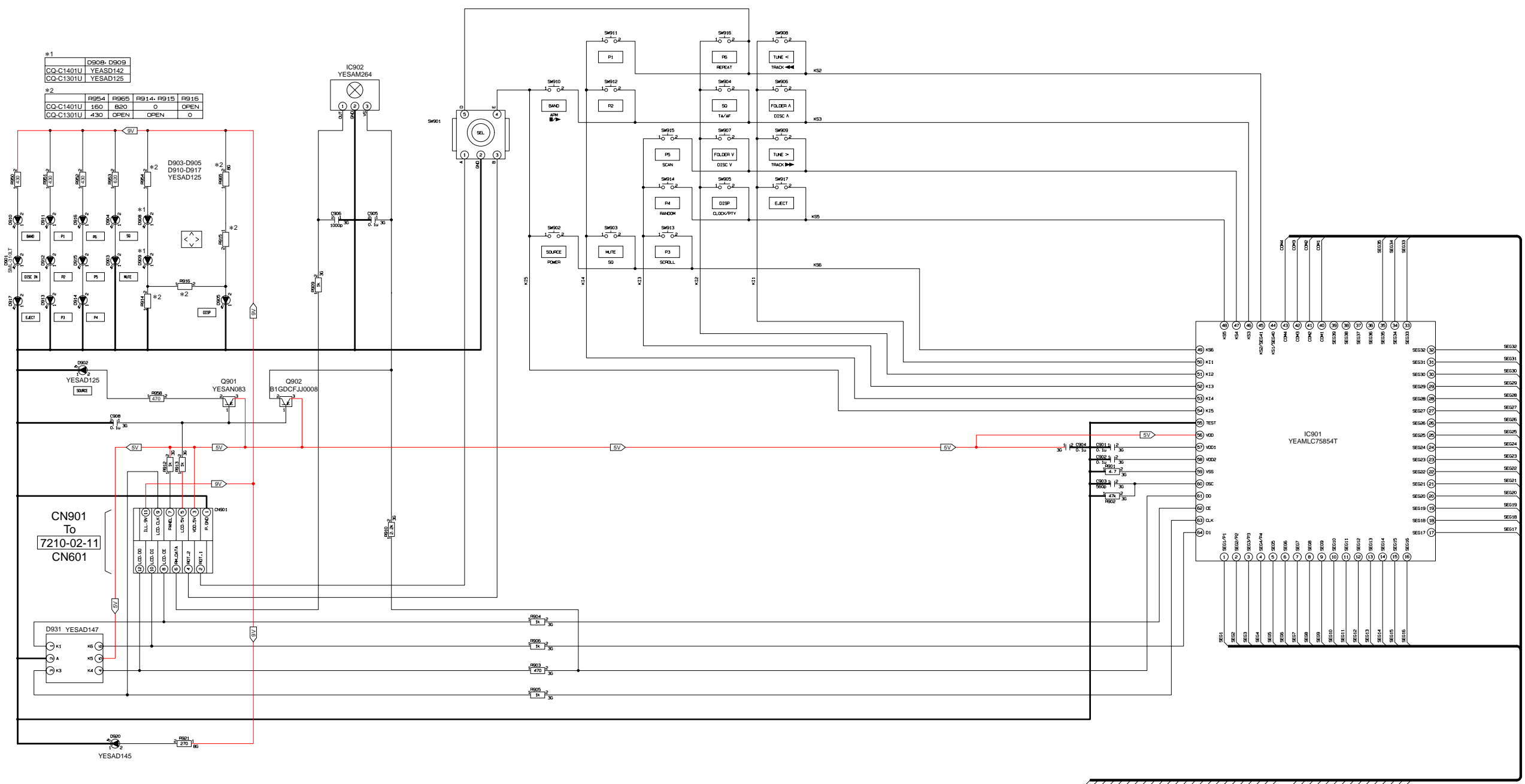


[3032-14-13] [Bottom View]



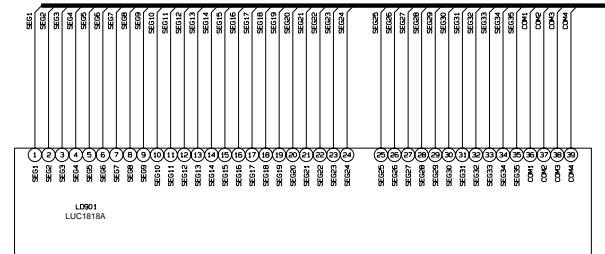
# 19.2. Display Block

7210-05-11



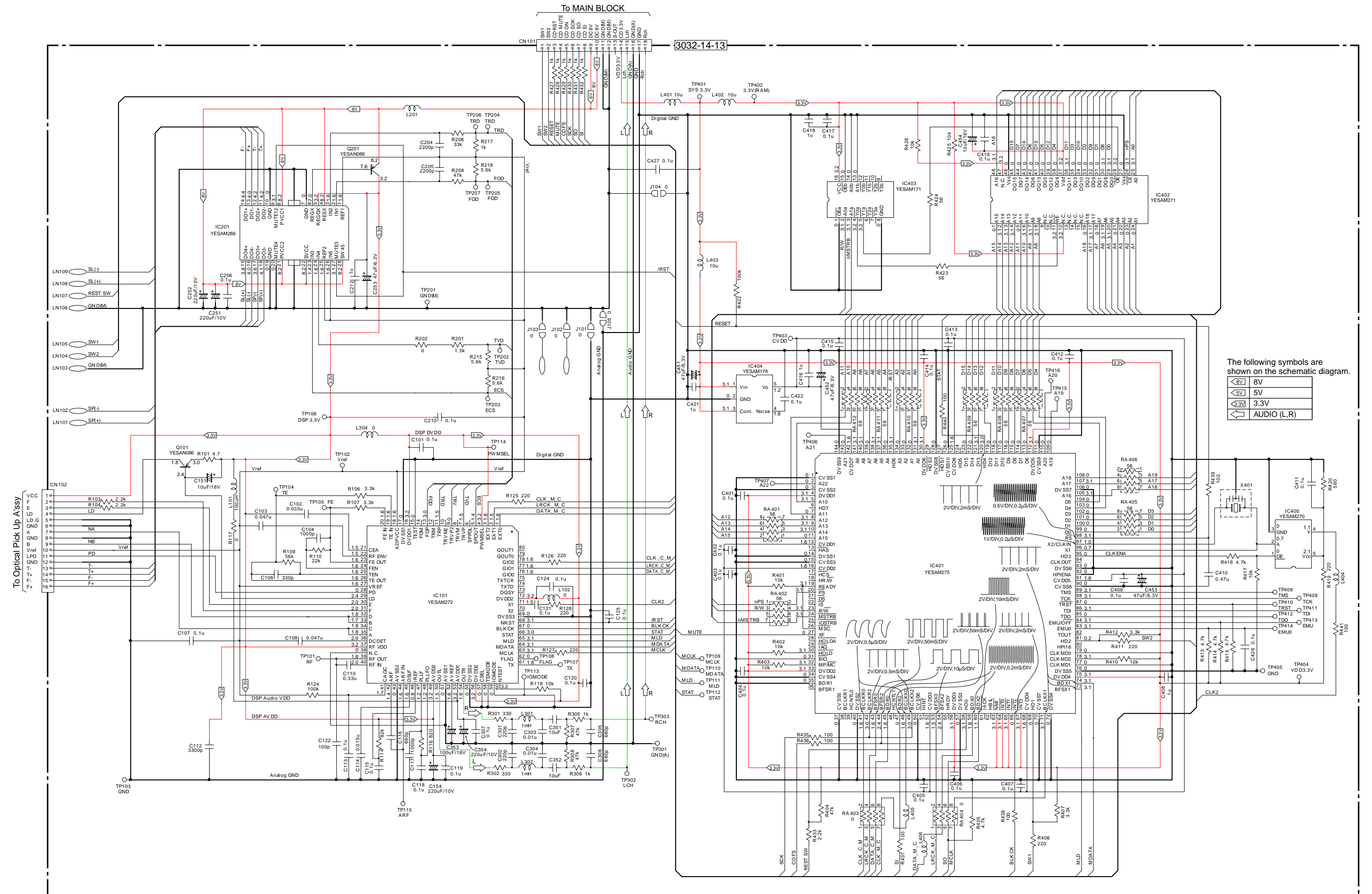
The following symbols are shown on the schematic diagram.

	5V
	9V





# 19.3. CD Servo Block



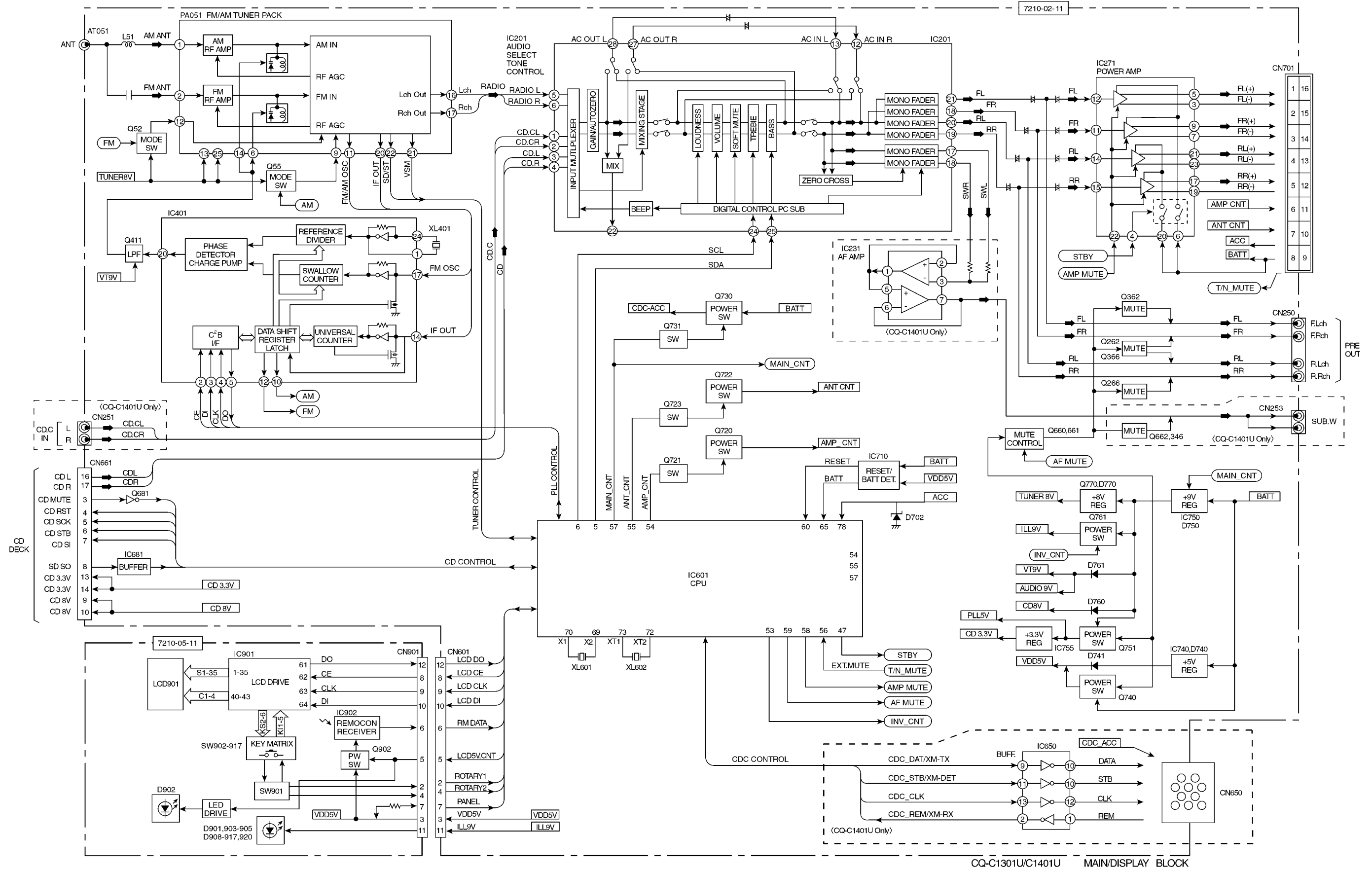
The following symbols are shown on the schematic diagram.

	8V
	5V
	3.3V
	AUDIO (L,R)

**THIS PAGE IS JUST FOR  
THE PAGE LAYOUT USE  
ONLY.**

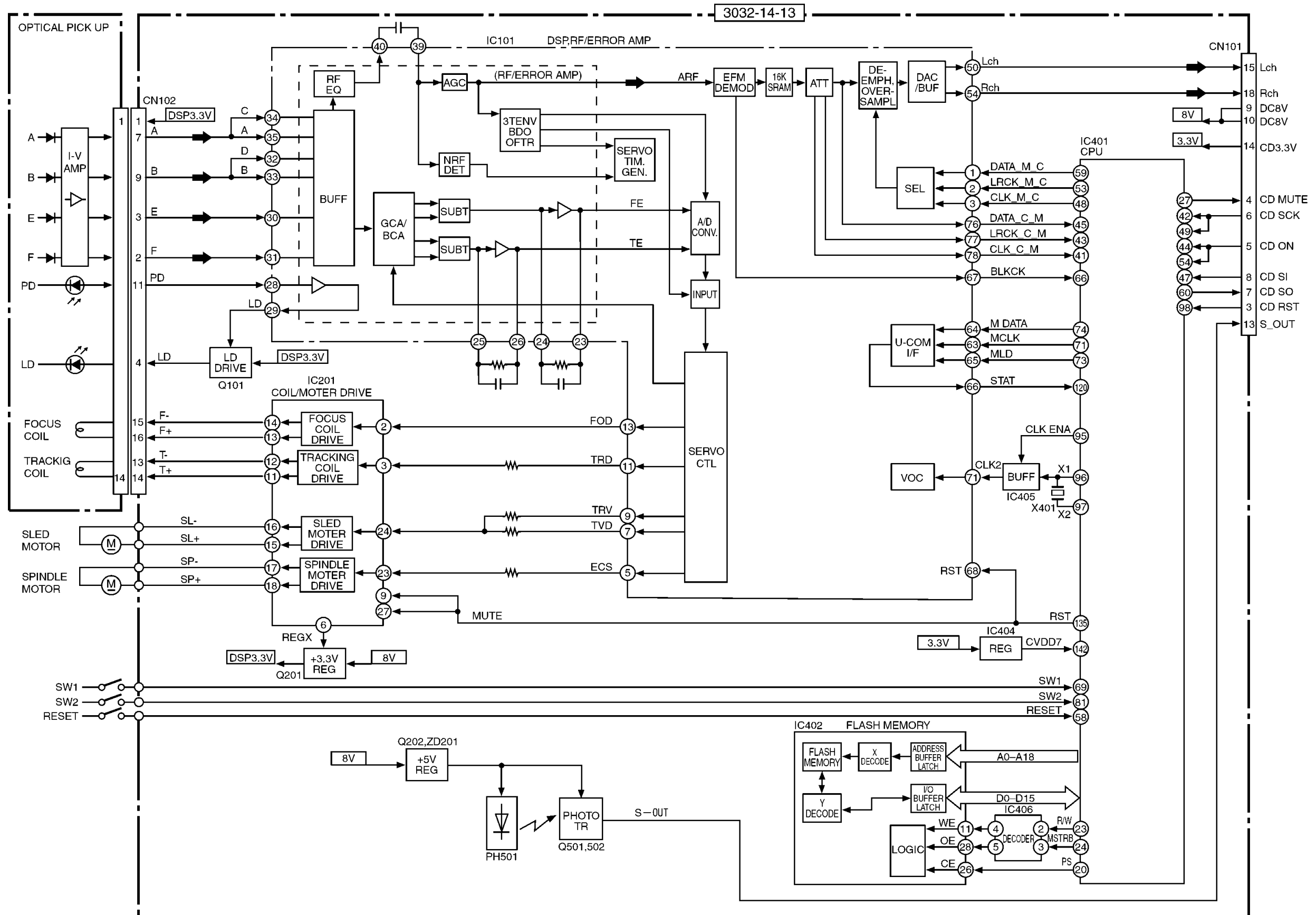
# 20 BLOCK DIAGRAM

## 20.1. Main Block



CQ-C1301U/C1401U MAIN/DISPLAY BLOCK

## 20.2. CD Servo Block



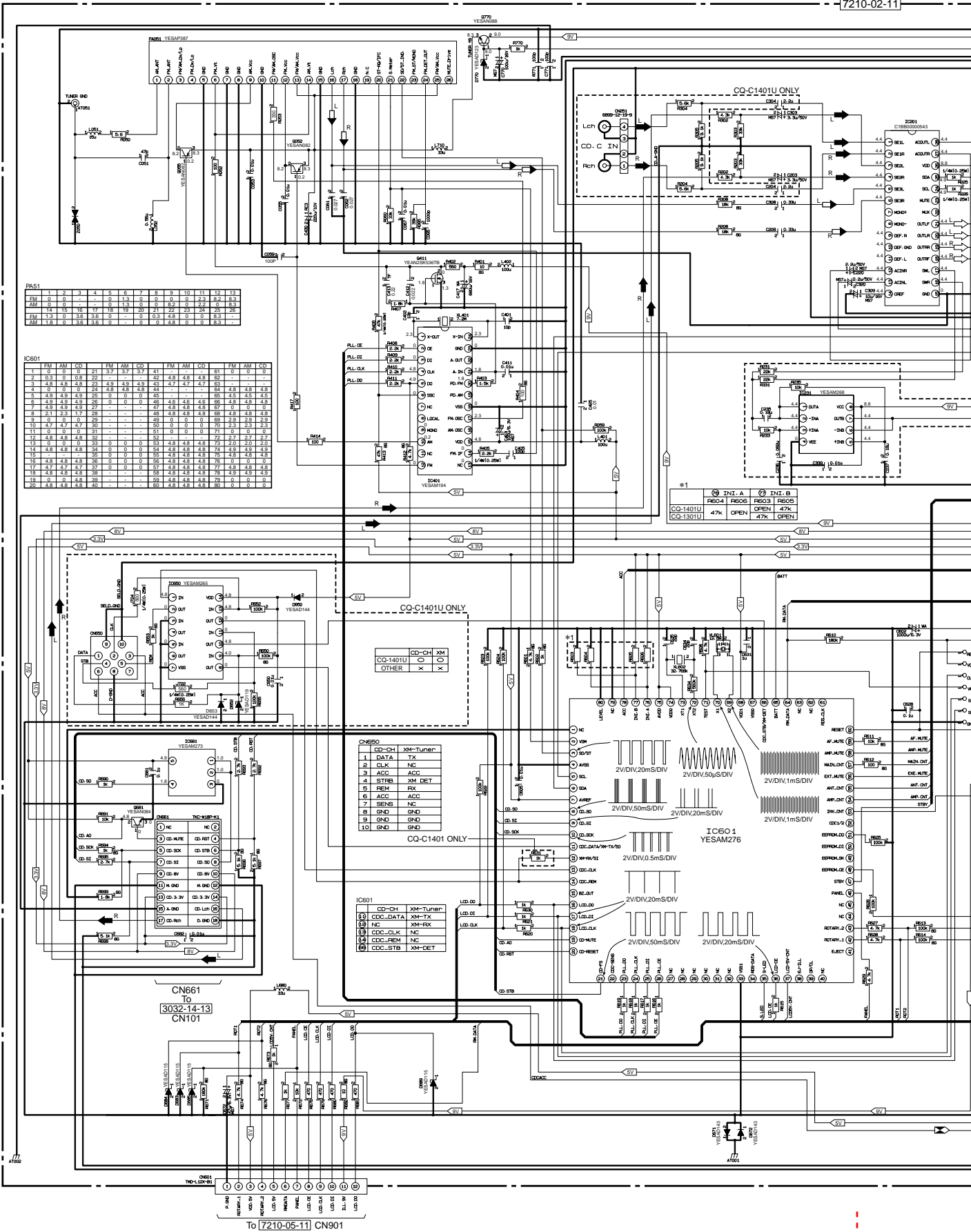
CQ-C1301U, C1401U CD Deck Block CDM-023

Printed in Japan 2004.11 (K)  
(Recycled Paper)

# 19 SCHEMATIC DIAGRAM

## 19.1. Main Block

7210-02-11

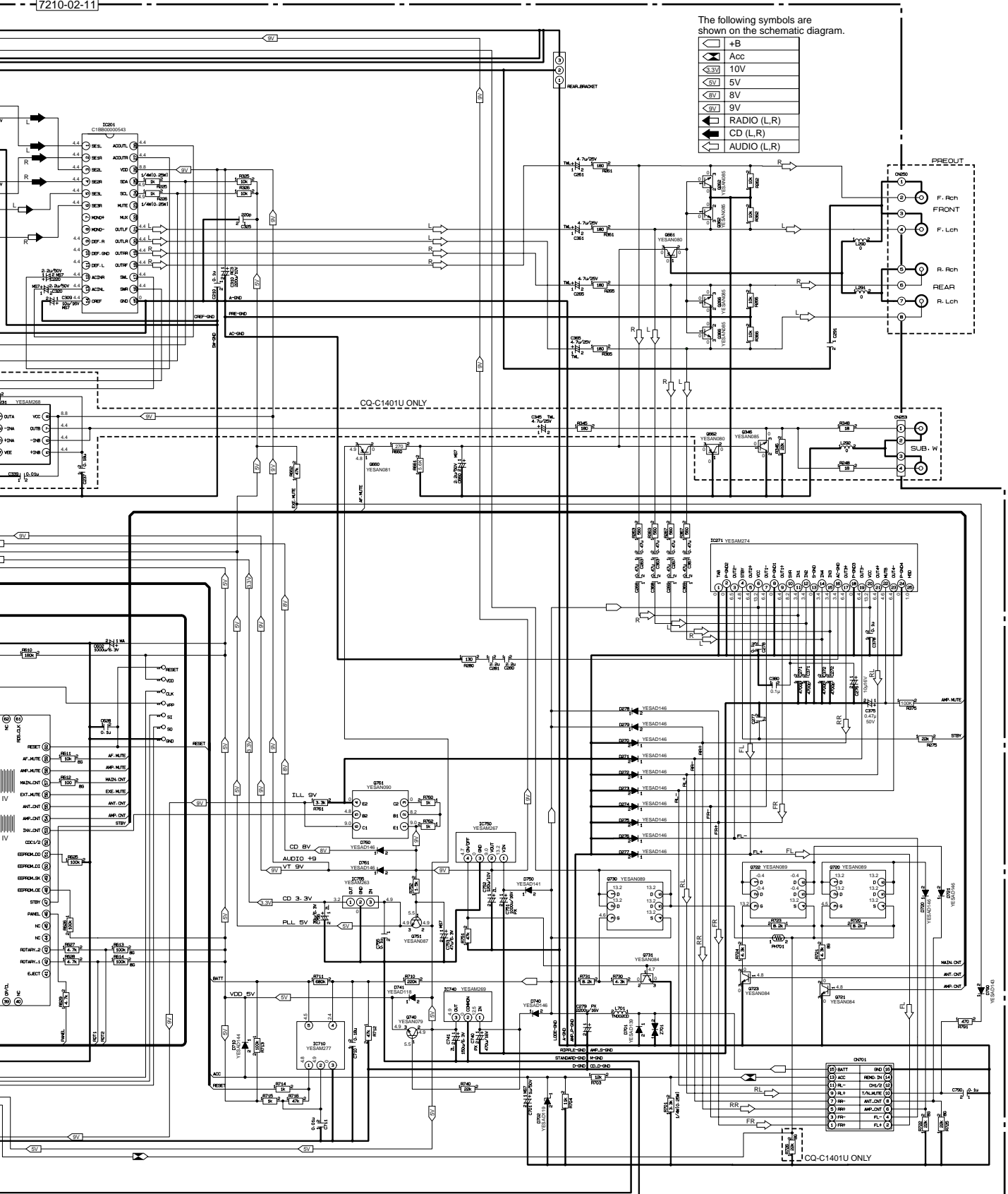


To [7210-05-11] CN901

7210-02-11

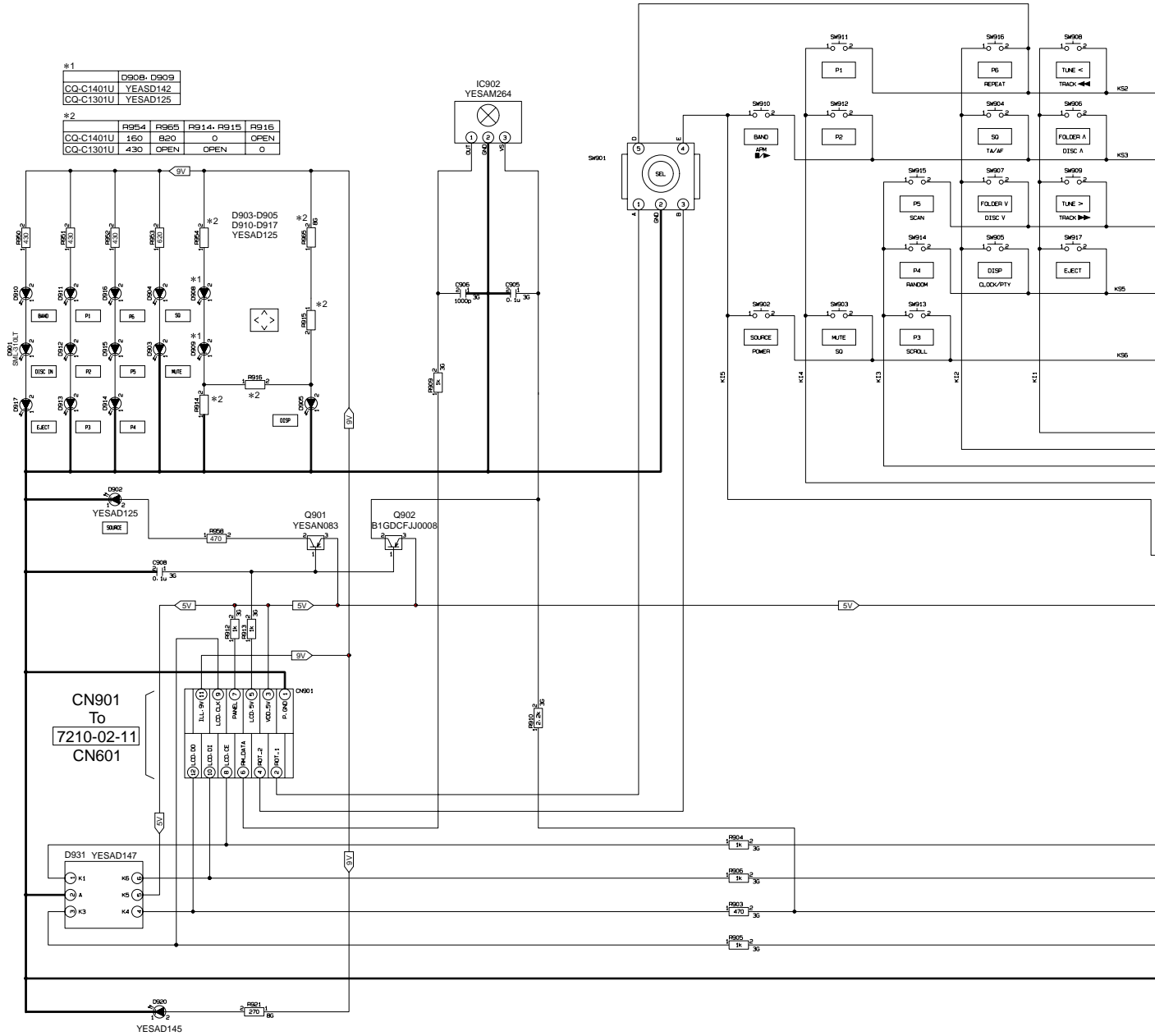
The following symbols are shown on the schematic diagram.

- +B
- Acc
- 10V
- 5V
- 8V
- 9V
- RADIO (L,R)
- CD (L,R)
- AUDIO (L,R)



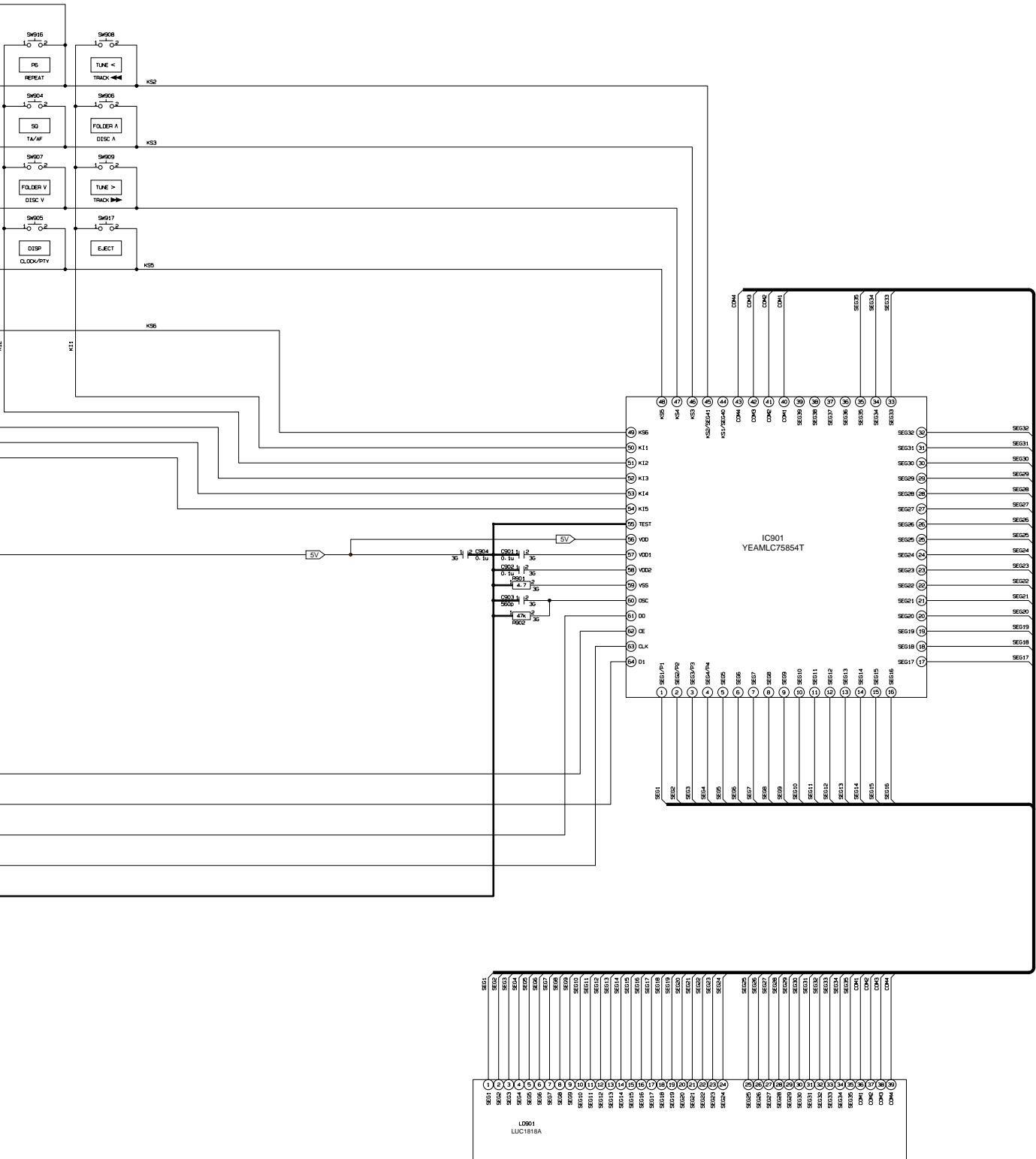
CQ-C1301U/C1401U MAIN

# 19.2. Display Block



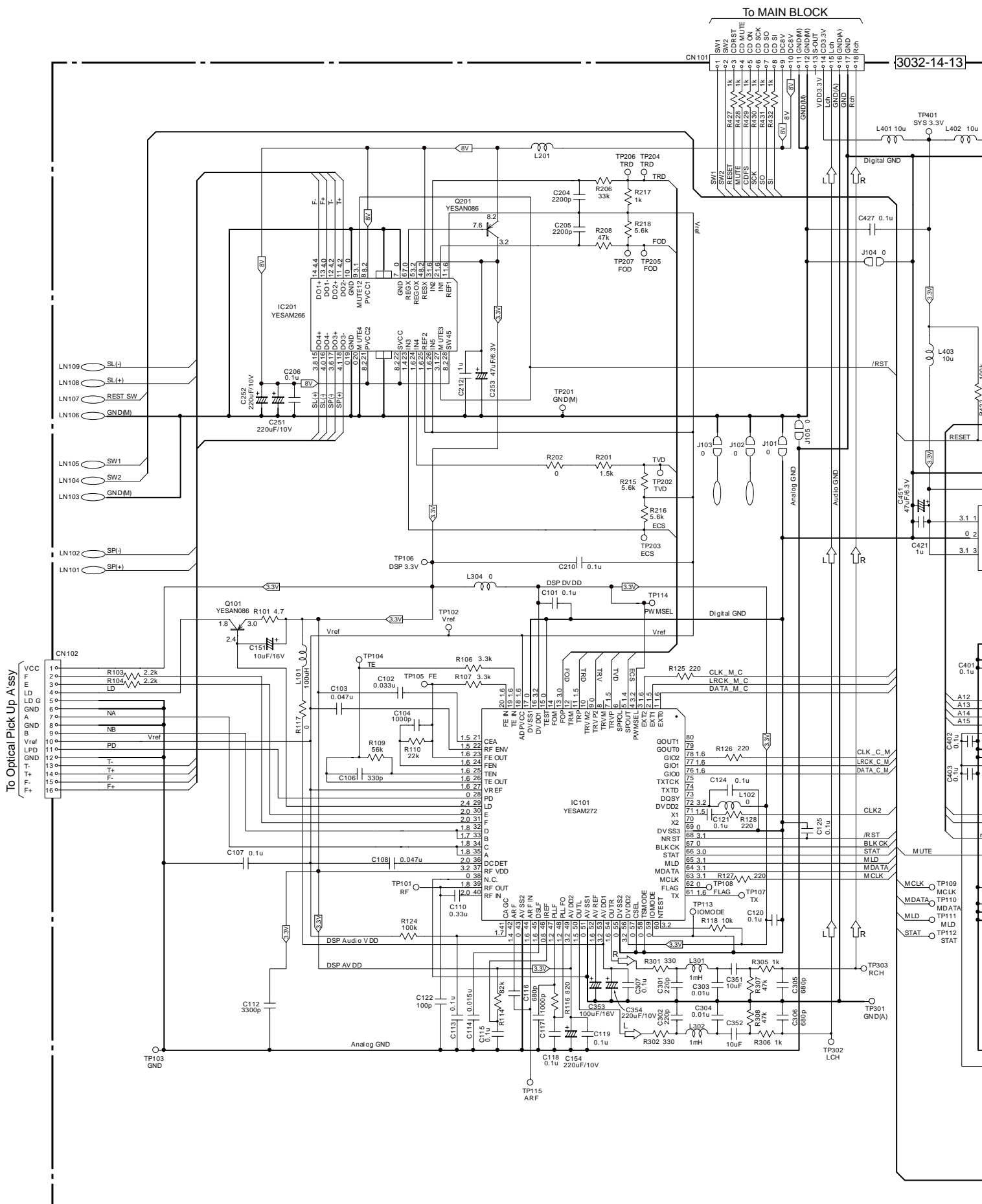
The following symbols are shown on the schematic diagram.

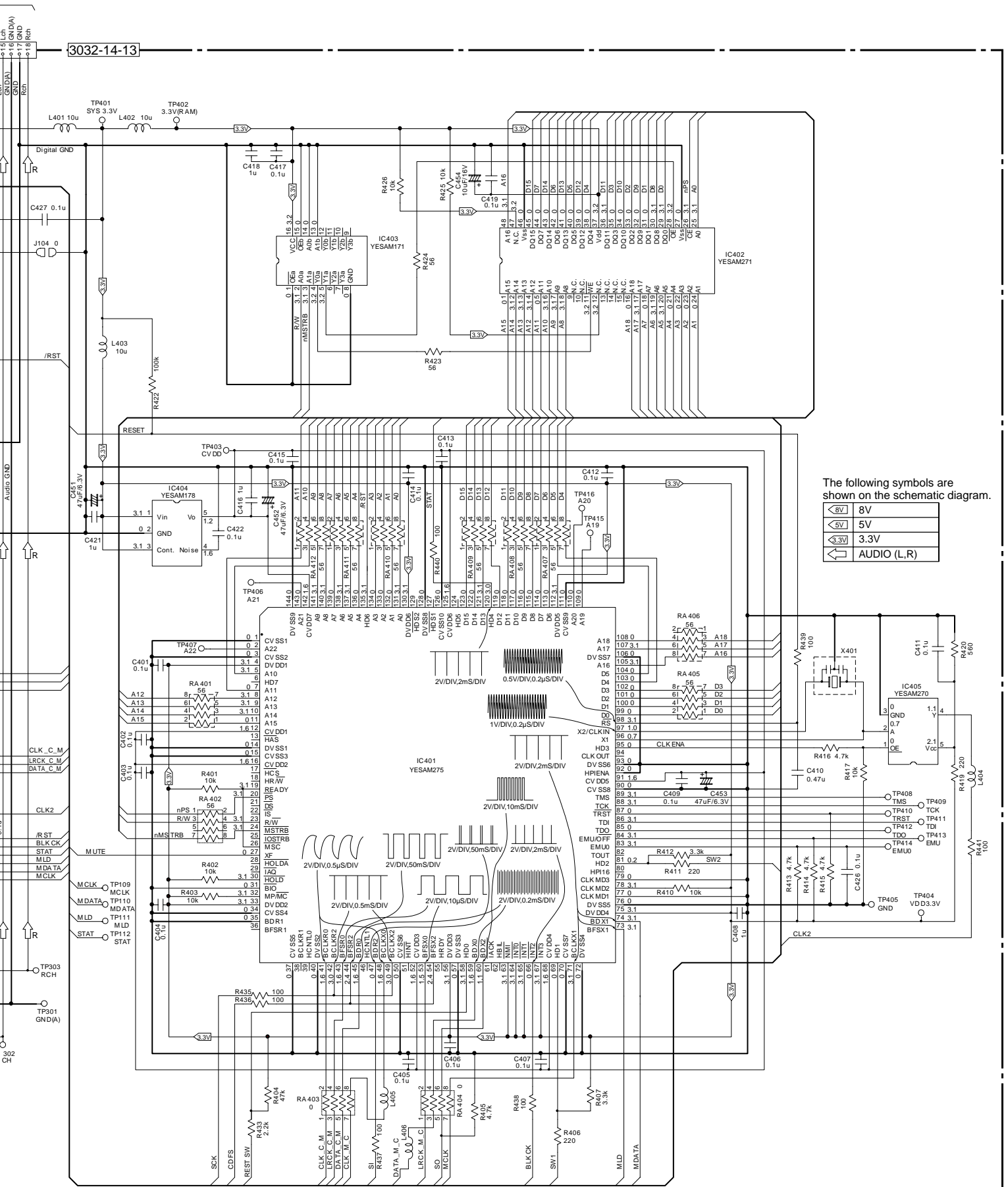
◁ 5V	5V
◁ 9V	9V





# 19.3. CD Servo Block





The following symbols are shown on the schematic diagram.

	8V
	5V
	3.3V
	AUDIO (L,R)