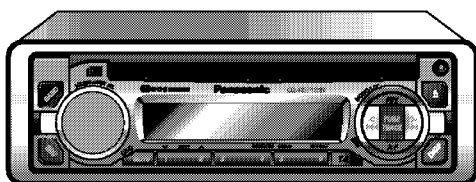


# Service Manual

## AUTOMOTIVE AFTERMARKET



&lt;CQ-RDP153N&gt;

**CQ-RDP153N**  
**CQ-RDP143N**  
**CQ-RDP133N**  
**CQ-RDP123N**  
**CQ-RDP113N**  
**CQ-RDP103N**  
**CQ-RDP003N**

Removable Front Panel CD Player /  
 Receiver with CD Changer Control

### Specifications\*

#### General

Power Supply	DC 12V (11V - 16V), Test Voltage 14.4V Negative Ground
Tone Controls	Bass ; $\pm 12$ dB at 100Hz Treble ; $\pm 12$ dB at 10kHz
Current Consumption	Less than 2.5A (CD mode, 0.5W $\times$ 4ch)
Maximum Power Output	45W $\times$ 4ch (at 4 $\Omega$ )
Speaker Impedance	4-8 $\Omega$
Pre-Amp Output Voltage	2.5V (CD mode)
Pre-Amp Output Impedance	200 $\Omega$

#### FM Stereo Radio

Frequency Range	87.5 - 108MHz
Usable Sensitivity	6dB/ $\mu$ V (S/N 30dB)

#### MW Radio

Frequency Range	531 - 1,602kHz
Usable Sensitivity	28dB/ $\mu$ V (S/N 20dB)

#### LW Radio

Frequency Range	153 - 279kHz
Usable Sensitivity	32dB/ $\mu$ V (S/N 20dB)

#### CD Player

Sampling Frequency	8 times oversampling
Pick-Up Type	Astigma 3-beam
Light Source	Semiconductor Laser
Wavelength	780nm
Frequency Response	20Hz to 20,000Hz ( $\pm 1$ dB)
Signal to Noise Ratio	96dB
Channel Separation	75dB

Dimensions**	178(W) $\times$ 50(H) $\times$ 155(D)mm
Weight**	1.4kg

\* Specifications and the design are subject to possible modification without notice due to improvements.

\*\* Dimensions and Weight shown are approximate.

# Panasonic

© 2003 Matsushita Electric Industrial Co., Ltd. All rights reserved. Unauthorized copying and distribution is a violation of law.

## ⚠ WARNING

This service information is designed for experienced repair technicians only and is not designed for use by the general public. It does not contain warnings or cautions to advise non-technical individuals of potential dangers in attempting to service a product. Products powered by electricity should be serviced or repaired only by experienced professional technicians. Any attempt to service or repair the product or products dealt with in this service information by anyone else could result in serious injury or death.

## IMPORTANT SAFETY NOTICE

There are special components used in this equipment which are important for safety. These parts are marked by ⚠ in the Schematic Diagrams, Circuit Board Diagrams, Exploded Views and Replacement Parts List. It is essential that these critical parts should be replaced with manufacturer's specified parts to prevent shock, fire or other hazards. Do not modify the original design without permission of manufacturer.

# CONTENTS

Page	Page
1 ABOUT LEAD FREE SOLDER (PbF) ..... 2	10 TERMINALS DESCRIPTION ..... 6
2 FEATUERS ..... 2	11 PACKAGE AND IC BLOCK DIAGRAM ..... 8
3 LASER PRODUCTS ..... 2	12 REPLACEMENT PARTS LIST ..... 11
4 FUSE ..... 3	13 EXPLODED VIEW (Unit) ..... 17
5 MAINTENANCE ..... 3	14 CD PLAYER MECHANICAL PARTS LIST ..... 18
6 NOTES ..... 3	15 EXPLODED VIEW (CD Deck) ..... 19
7 DIMENSIONS ..... 3	16 WIRING DIAGRAM ..... 20
8 WIRING CONNECTION ..... 4	17 SCHEMATIC DIAGRAM -1 ..... 24
9 BLOCK DIAGRAM ..... 5	18 SCHEMATIC DIAGRAM -2 ..... 25

## 1 ABOUT LEAD FREE SOLDER (PbF)

Distinction of PbF PCB:

PCBs (manufactured) using lead free solder will have a PbF stamp on the PCB.

### Caution :

- Pb free solder has a higher melting point than standard solder; Typically the melting point is 50 - 70°F (30 - 40°C) higher. Please use a soldering iron with temperature control and adjust it to 700 ± 20°F (370 ± 10°C). In case of using high temperature soldering iron, please be careful not to heat too long.
- Pb free solder will tend to splash when heated too high (about 1100°F/600°C)
- This lead free solder will be used for the products after serial No. 1,000,001.

## 2 FEATUERS

- PLL (Phase Locked Loop) synthesized tuning.
- 18-FM, 6-AM presets with preset scan
- Digital servo for reliable CD playback.
- Removable face plate.
- RDS (Radio Data System) function.

## 3 LASER PRODUCTS

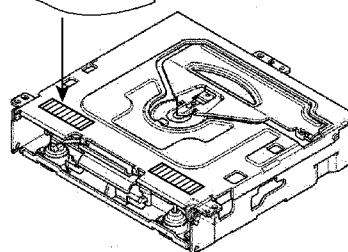
### CAUTION:

This product utilizes a laser diode with the unit turned "on", laser radiation is emitted from the pickup lens.

Laser radiation from the pickup lens is safety level, but be sure the followings:

1. Do not disassemble the optical pickup unit, since radiation from exposed laser diode is dangerous.
2. Do not adjust the variable resistor on the pickup unit. It was already adjusted.
3. Do not look at the focus lens using optical instruments.
4. Recommend not to look at pickup lens for a long time.

CAUTION LASER RADIATION WHEN OPEN.  
DO NOT STARE INTO BEAM.



Deck Ass'y (Upper Side)

### Caution

This Product utilizes a laser. Use of controls or adjustments or performance of procedures other than those specified herein may result in hazardous radiation exposure.

## 4 FUSE

Use fuses of the same specified rating (15A). Using different substitutes or fuses with higher ratings, or connecting the unit directly without a fuse, could cause fire or damage to the unit.

## 5 MAINTENANCE

Wipe the unit with a soft dry cloth.

Never apply volatile liquids such as benzine and thinner to prevent damage

## 6 NOTES

### [RADIO BLOCK]

Do not align the AM/FM package block. When the package block is necessary, it will be supplied already aligned at the factory.

### [CD DECK BLOCK]

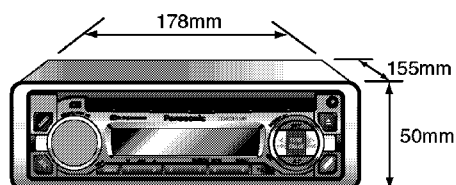
This model has no servo alignment points because microcomputer controls the servo circuit.

### [OTHER]

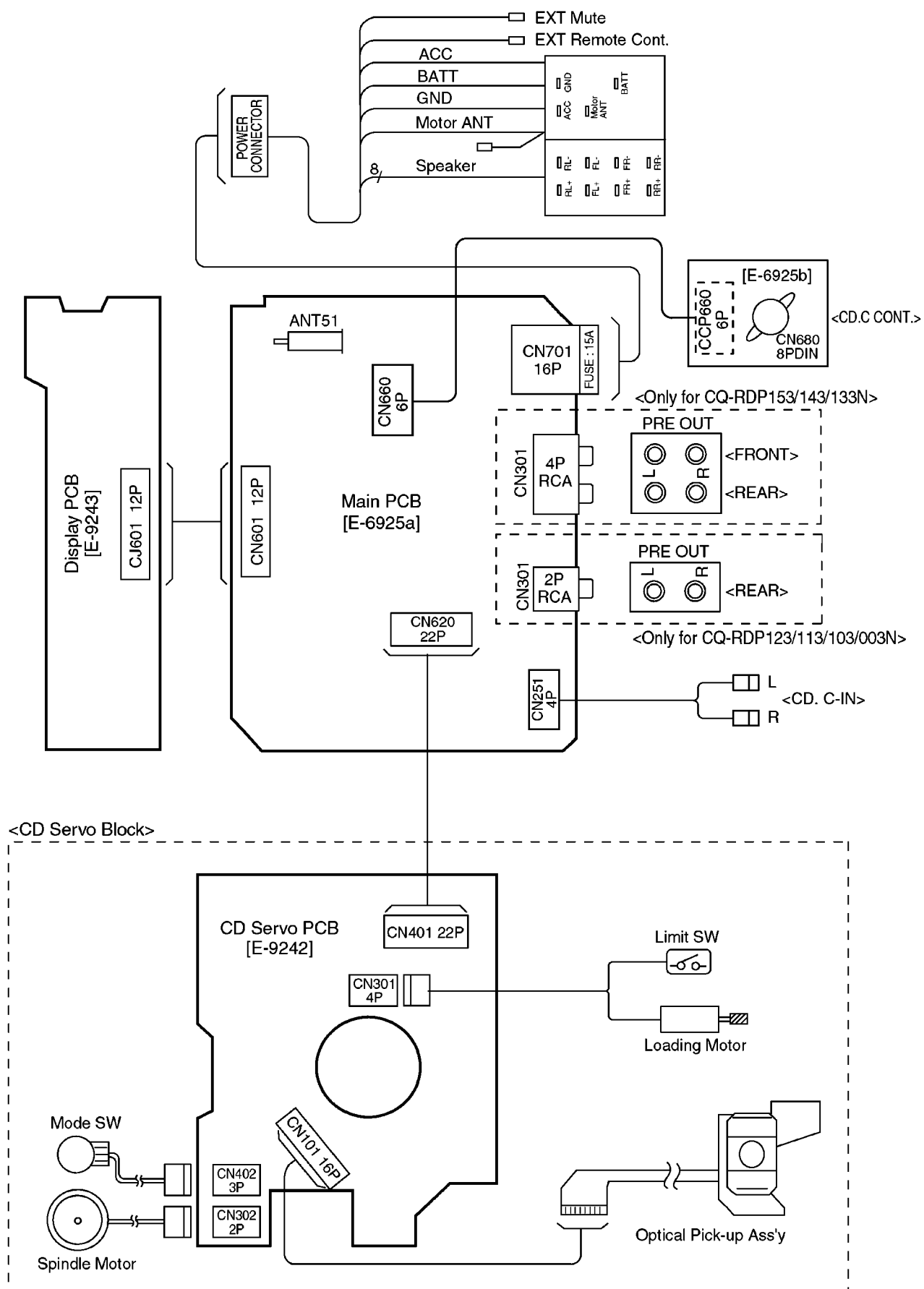
The following table describes the differences between 7 models.

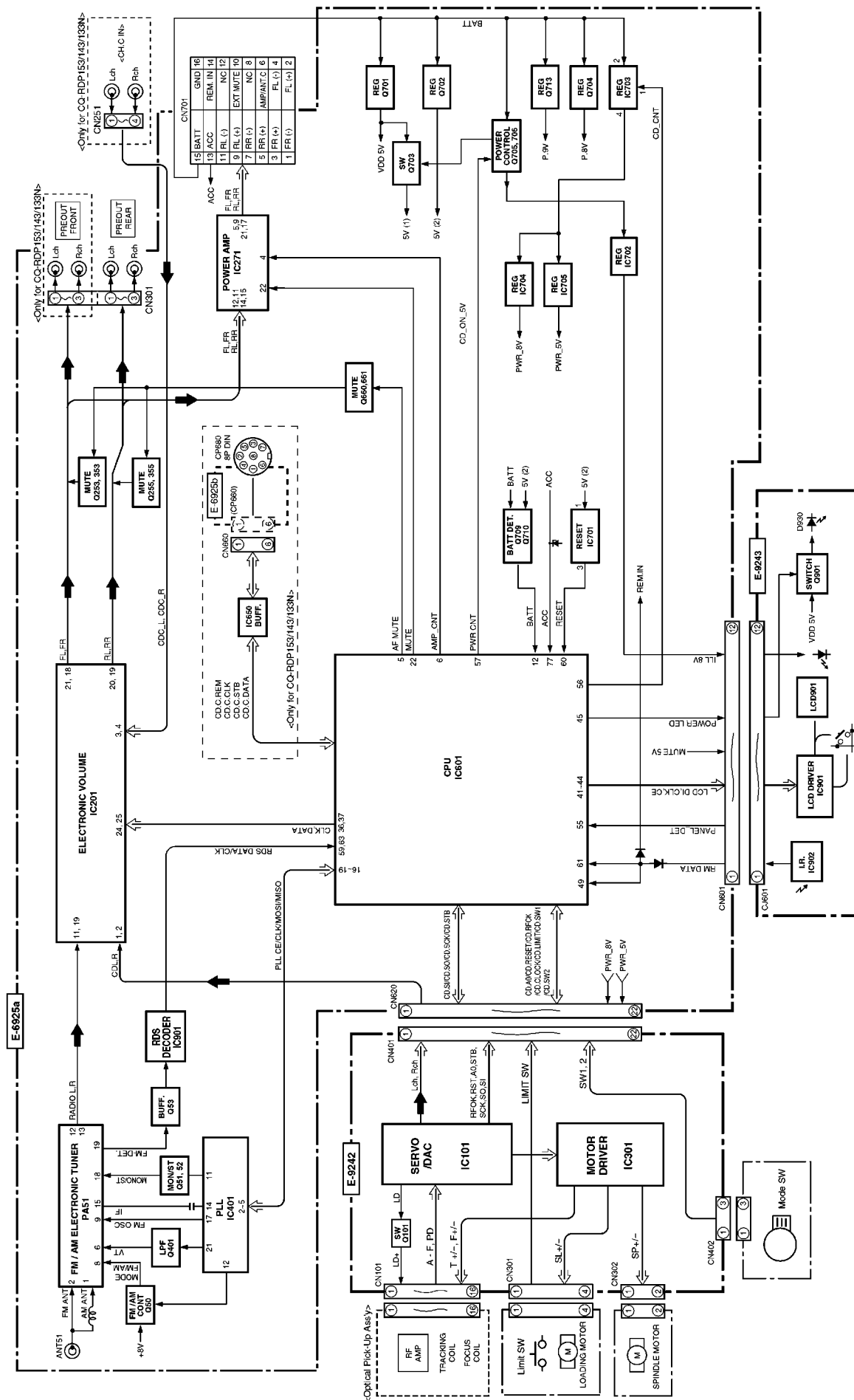
	Changer Control	Pre-OUT	Illuminati on Color	Face Color
CQ-RDP153N	Yes	4 (Front/Rear)	Blue/Red	Plating Silver
CQ-RDP143N	Yes	4 (Front/Rear)	Amber	Plating Silver
CQ-RDP133N	Yes	4 (Front/Rear)	Green	Plating Silver
CQ-RDP123N	None	2 (Rear)	Blue/Red	Coating Black
CQ-RDP113N	None	2 (Rear)	Amber	Coating Black
CQ-RDP103N	None	2 (Rear)	Green	Coating Black
CQ-RDP003N	None	2 (Rear)	Amber	Coating Silver

## 7 DIMENSIONS



## 8 WIRING CONNECTION





# 10 TERMINALS DESCRIPTION

## 10.1. Main Block

IC601 : C2CBHF000281

Pin No.	Port	Descriptions	I/O (V)	FM(V)	AM (V)	CD (V)
1	NC	(Connecting to ground)	-	0	0	0
2	NC	(Connecting to ground)	-	0	0	0
3	NC	(Connecting to ground)	-	0	0	0
4	AVSS	Analog ground	-	0	0	0
5	AF MUTE	AF mute	O	5.1	5.1	5.2
6	AMP-CNT	Power Amp. stand-by	O	5.1	5.1	5.2
7	AVREF	Reference voltage	-	5.1	5.1	5.2
8	CD-SO	CD data	I	0	0	0
9	CD-SI	CD data	O	0	0	2.4
10	CD-SCK	CD clock	O	0	0	5.1
11	CD.C DATA	CD CH data	I	0	0	0
12	BATT	Battery level detection	I	5.1	5.1	5.1
13	CD.C CLK	CD.CH clock	I	0	0	0
14	REM OUT	CD.CH remote	O	5.1	5.1	5.1
15	BZOUT	Buzzer out	O	0	0	0
16	PLL-DO	Data from PLL	I	5.1	5.1	5.1
17	PLL-DI	Data for PLL	O	0	0	0
18	PLL-CLK	Clock for PLL	O	5.1	5.1	5.2
19	PLL-CE	PLL chip enable	O	0	0	0
20	NC	No connection	-	-	-	-
21	NC	No connection	-	-	-	-
22	MUTE	Mute control	O	5.1	5.1	5.1
23	NC	No connection	-	-	-	-
24	CD-STB	CD strobe	O	0	0	5.1
25	CD-A0	CD address 0	O	0	0	4.4
26	CD-RST	CD reset	O	0	0	5.1
27	CD-RFOK	CD RFOK signal	I	0	0	5.0
28	CD-LOCK	CD lock signal	I	0	0	5.0
29	CD-LIMIT	CD limit sw	I	0	0	5.1
30	CD-SW2	CD SW2	I	5.1	5.1	0
31	NC	No connection	-	-	-	-
32	NC	No connection	-	-	-	-
33	Vss1	Ground	-	0	0	0
34	NC	No connection	-	-	-	-
35	ST	FM stereo detection	I	5.0	5.1	0
36	IC2-CLK	Electronic volume clock	O	5.1	5.1	5.2
37	IC2-DATA	Electronic volume data	I/O	5.1	5.1	5.2
38	S.LED	Not used	-	-	-	-
39	NC	No connection	-	-	-	-
40	NC	No connection	-	-	-	-
41	LCD-DI	LCD data output	O	0	0	0
42	LCD-DO	LCD data input	I	5.0	5.0	5.0
43	LCD-CLK	LCD clock	O	0	0	0
44	LCD-CE	LCD chip enable output	O	0	0	0
45	POWER LED	Pilot lamp on	O	0	0	0
46	ANT.CONT	Not used	-	-	-	-
47	NC	No connection	-	-	-	-
48	NC	No connection	-	-	-	-
49	REM-IN_SUB	Remote control sig. sampling	I	4.4	4.4	4.4
50	NC	No connection	-	-	-	-
51	NC	No connection	-	-	-	-
52	NC	No connection	-	-	-	-
53	NC	No connection	-	-	-	-
54	TEL-MUTE	Telephone mute	I	5.1	5.1	5.1
55	PANEL	Panel detect	I	4.8	4.8	4.9
56	CD-CNT	CD power control	O	0	0	5.1
57	PWR CNT	Power control	O	5.0	5.0	5.0
58	NC	No connection	-	-	-	-
59	RDS DATA	RDS data	I	2.5	2.5	2.5
60	/RESET	Reset input	I	5.1	5.1	5.1
61	REM-DATA	Remocon data input	I	4.4	4.4	4.4
62	CD_SW1	CD mode SW	I	0	0	0
63	RDS CLK	RDS clock	I	2.5	2.5	2.5
64	CD.C.STB	CD.CH strobe	I	0	0	0
65	ROTALY.1	Volume up SW	I	5.1	5.1	5.1
66	ROTALY.2	Volume down SW	I	0	0	0

Pin No.	Port	Descriptions	I/O (V)	FM(V)	AM (V)	CD (V)
67	VSS0	Ground	-	0	0	0
68	VDD1	+5V power supply	-	5.1	5.1	5.1
69	X2	Crystal oscillator	-	3.1	3.1	3.1
70	X1	Crystal oscillator	-	2.2	2.2	2.2
71	Vpp	(Ground pull-down)	-	0	0	0
72	XT2	Crystal oscillator	-	3.1	3.1	3.1
73	XT1	Crystal oscillator	-	2.5	2.5	2.5
74	VDD0	+5V power supply	-	5.1	5.1	5.1
75	AVREF	Analog reference voltage	-	5.1	5.1	5.1
76	VSM	S-meter detection	I	0	0	0
77	ACC	ACC level detection	I	5.1	5.1	5.1
78	INIT A	Initial value (Note 2)	I	#1	#1	#1
79	NC	No connection	-	-	-	-
80	NC	No connection	-	-	-	-

Note 1 :

Voltage measuerments are with respect to ground, with a voltmeter (internal resistance : 10M ohms).

Note 2 : #1

0V : CQ-RDP153/143/133N

5.1V : CQ-RDP123/113/103/003N

## 10.2. Display Block

IC901 : YEAMLC75854T

Pin No.	Port	Descriptions	I/O (V)	(V)
1-8	SEG1-8	LCD segment	O	2.5
9-35	SEG9-35	LCD segment	O	2.5
36-39	NC	No connection	-	-
40-43	COM1-4	LCD common	O	2.5
44	NC	No connection	-	-
45-49	KS2-6	Key data output	O	0.9
50-54	KI1-5	Key data input	I	0
55	TEST	(Connecting to ground)	-	0
56	VDD	+5V power supply	-	5.1
57	VDD1	Ground through capacitor	-	3.3
58	VDD2	Ground through capacitor	-	1.7
59	Vss	Ground	-	0
60	OSC	CR oscillator	-	3.9
61	DO	Key data output	O	4.4
62	CE	Chip enable	I	0
63	CLK	LCD clock	I	0
64	DI	LCD data input	I	0

## 10.3. CD Servo Block

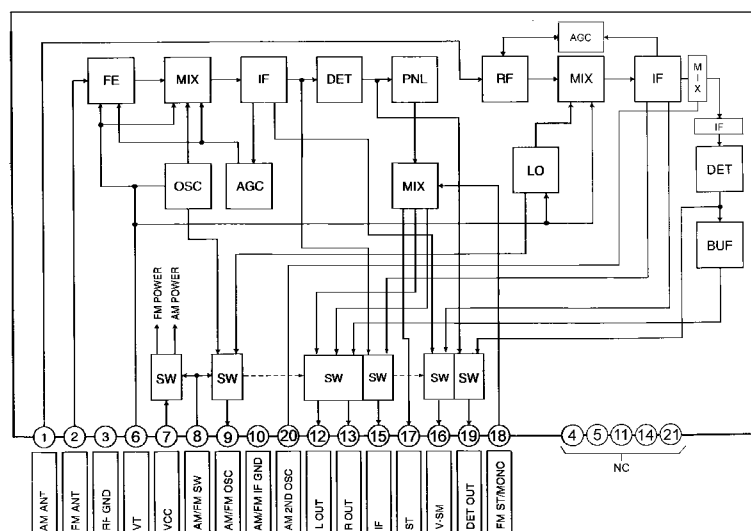
### IC101 : C1BB00000665

Pin No.	Port	Descriptions	I/O	Vol. (V)
1	D.GND	Digital logic Ground	-	0
2	RFOK	RFOK output signal	O	5.0
3	/RST	System reset	I	5.1
4	A0	Command/Parameter specification	I	4.5
5	/STB	Serial data strobe	I	5.1
6	/SCK	Data shift clock	I	5.1
7	SO	Serial data	O	0
8	SI	Serial data	I	2.4
9	XTALEN	(Connecting to ground)	-	0
10	D.VDD	Digital logic power supply	-	5.0
11	DA.VDD	DAC power supply	-	4.8
12	R OUT	Audio R ch	O	2.4
13	DA.GND	DAC ground	-	0
14	REGC	Bypass capacitor for SCF regulator	-	2.5
15	DA.GND	DAC ground	-	0
16	L OUT	Audio L ch	O	2.4
17	DA.VDD	DAC power supply	-	4.8
18	R+	Not used	-	-
19	R-	Not used	-	-
20	L-	Not used	-	-
21	L+	Not used	-	-
22	X.VDD	Crystal OSC power supply	-	5.0
23	/XTAL	Crystal OSC terminal	-	2.4
24	XTAL	Crystal OSC terminal	-	2.2
25	X.GND	Crystal OSC ground	-	0
26	D.VDD	Digital logic power supply	-	5.0
27	EMPH	Not used	-	-
28	FLAG	Not used	-	-
29	DIN	DAC serial data	I	2.6
30	DOU	DAC serial data	O	2.6
31	SCKIN	DAC shift clock	I	2.7
32	SCKO	DAC shift clock	O	2.7
33	LRCKIN	DAC LRCK signal	I	2.5
34	LRCK	DAC LRCK signal	O	2.5
35	HOLD/WDCK	Not used	-	-
36	TX	Not used	-	-
37	D.GND	Digital logic Ground	-	0
38	C16M	Not used	-	-
39	LIMIT	(Connecting to VDD)	-	5.0
40	D.VDD	(Connecting to VDD)	-	5.0
41	LOCK	EFM SYNC detection	O	5.0
42	RFCK	Not used	-	-
43	MIRR/WFCK	Not used	-	-
44	PLCK	Not used	-	-
45	D.GND	Digital logic Ground	-	0
46	C1D1	Not used	-	-
47	C1D2	Not used	-	-
48	C2D1	Not used	-	-
49	C2D2	Not used	-	-
50	C2D3	Not used	-	-
51	D.VDD	Digital logic power supply	-	5.0
52	PACK	Not used	-	-
53	TSO	Not used	-	-
54	TSI	(Connecting to ground)	-	0
55	/TSCK	(Connecting to ground)	-	0
56	TSTB	(Connecting to ground)	-	0
57	D.GND	Digital logic Ground	-	0
58	TEST0	(Connecting to ground)	-	0
59	TEST1	(Connecting to ground)	-	0
60	ATEST	Not used	-	2.1
61	A.GND	Analog logic Ground	-	0
62	FD	Focus drive	O	2.6
63	TD	Tracking drive	O	2.5
64	SD	Sled drive	O	2.5
65	MD	Spindle drive	O	2.6
66	DAC0	Not used	-	-
67	DAC1	Not used	-	-

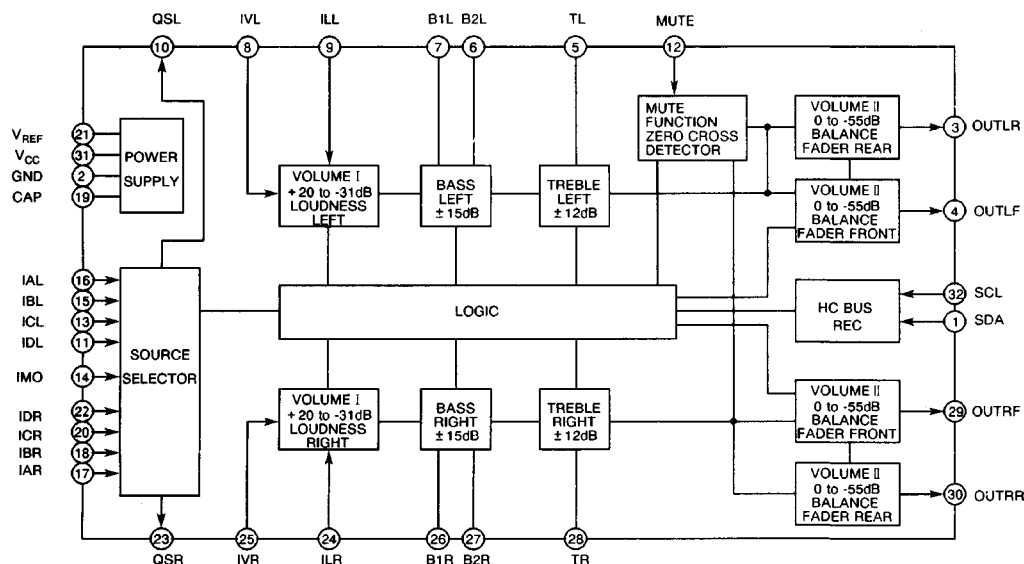
Pin No.	Port	Descriptions	I/O	Vol. (V)
68	DAC2	Not used	-	-
69	DAC3	Not used	-	-
70	A.VDD	Analog logic power supply	-	5.0
71	EFM	EFM signal	O	2.7
72	ASY	Reference voltage for EFM comp.	I	2.5
73	C3T	Capacitor terminal for 3T detection	-	2.7
74	RFI	RF for EFM data generation	I	2.5
75	AGCO	RF signal output (after gain adjustment)	O	2.5
76	AGCI	RF-AGC amp input	I	2.5
77	RFO	RF summing amp output	O	2.8
78	EQ2	C/R terminal for RF amp equalizer	-	2.6
79	EQ1	C/R terminal for RF amp equalizer	-	0.5
80	RF-	RF summing amp inverted input	I	2.4
81	A.GND	Analog logic Ground	-	0
82	A	Photo detector A input	I	2.7
83	C	Not used	-	-
84	B	Photo detector B input	I	2.7
85	D	Not used	-	-
86	F	Photo detector F input	I	3.0
87	E	Photo detector E input	I	3.0
88	A.VDD	Analog logic power supply	-	5.0
89	REFOUT	Reference voltage output	O	2.5
90	FE-	Focus error amp input	I	2.5
91	FE0	Focus error amp output	O	2.5
92	TE-	Tracking error amp input	I	2.5
93	TE0	Tracking error amp output	O	2.5
94	TE2	Tracking error amp output	O	2.6
95	TEC	Tracking comparator input	I	2.5
96	A.GND	Analog logic Ground	-	0
97	PD	PD detection	I	0
98	LD	LD control	O	3.6
99	PN	(Connecting to ground)	-	0
100	A.VDD	Analog logic power supply	-	5.0

# 11 PACKAGE AND IC BLOCK DIAGRAM

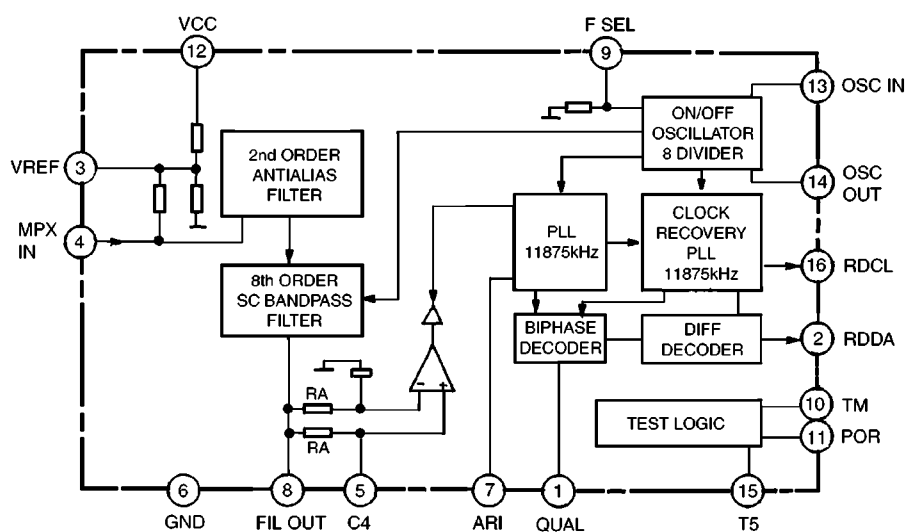
## 11.1. Main Block



PA51 : C5BA0000110

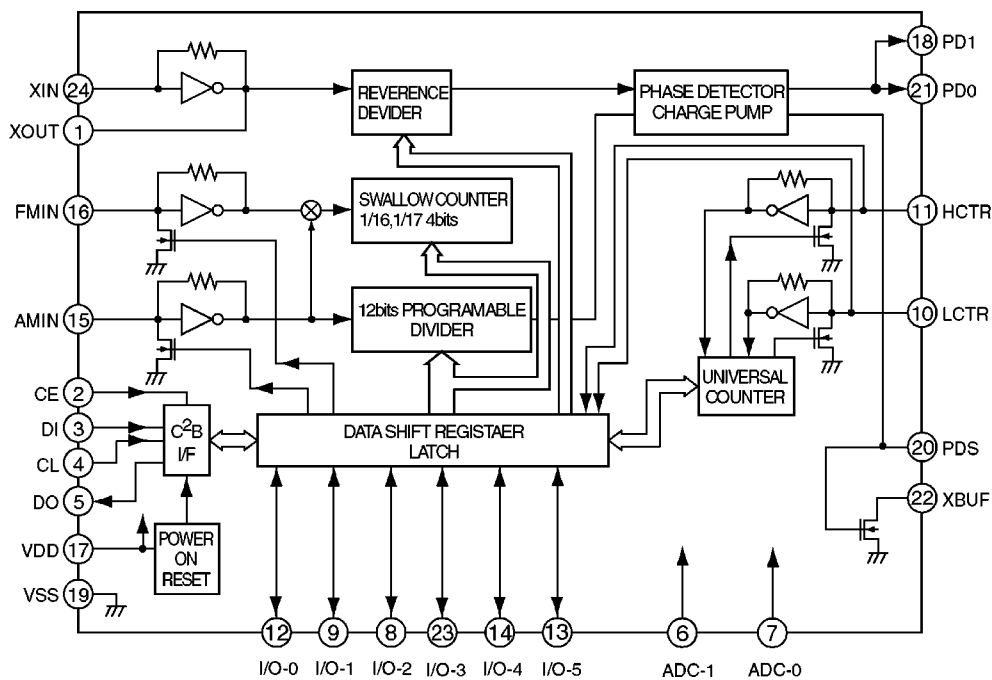
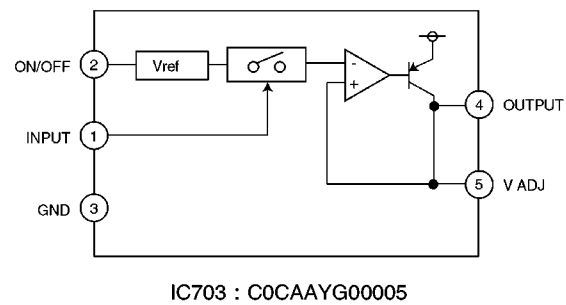
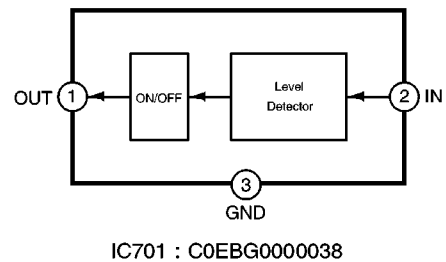
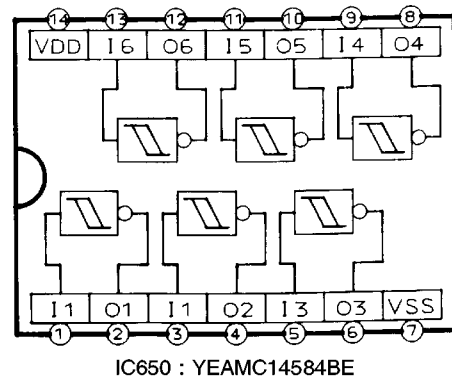
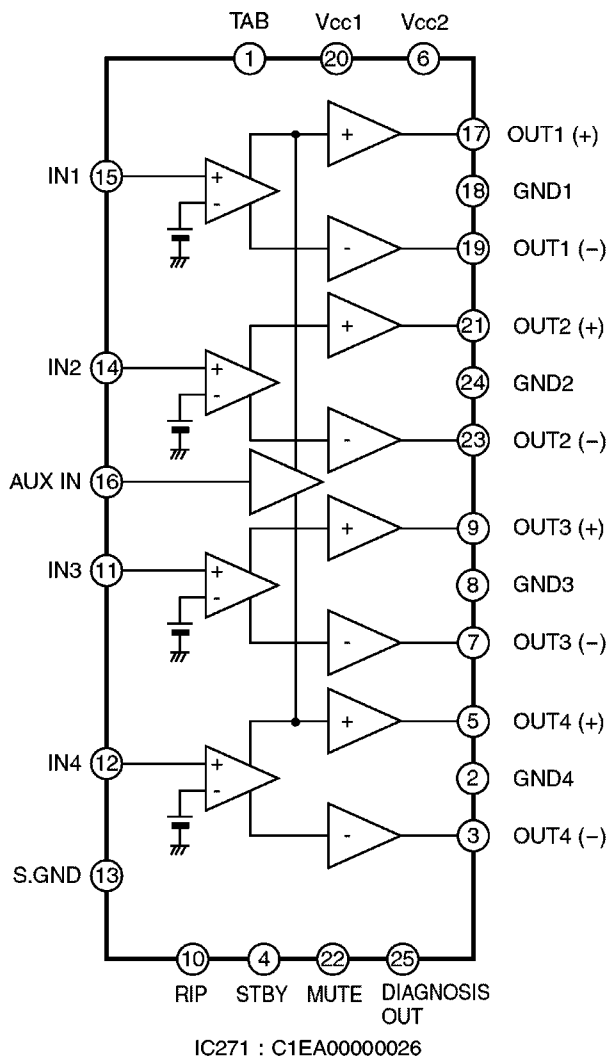


IC201 : C1BB00000543

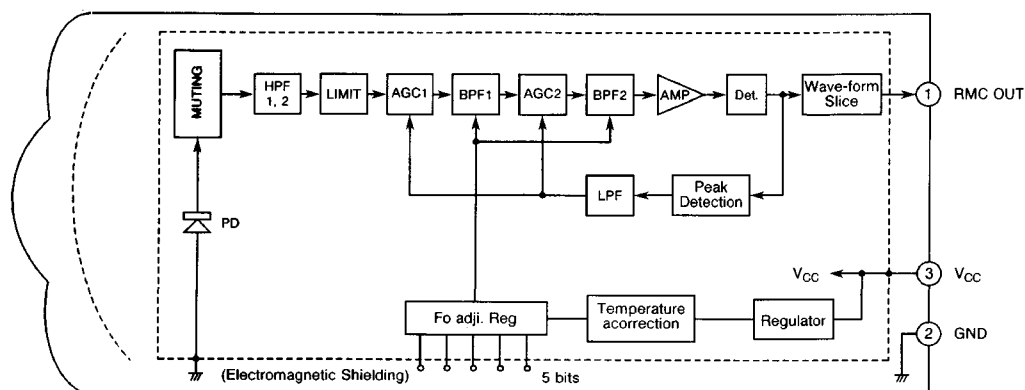


IC901 : YEAMDA7479D



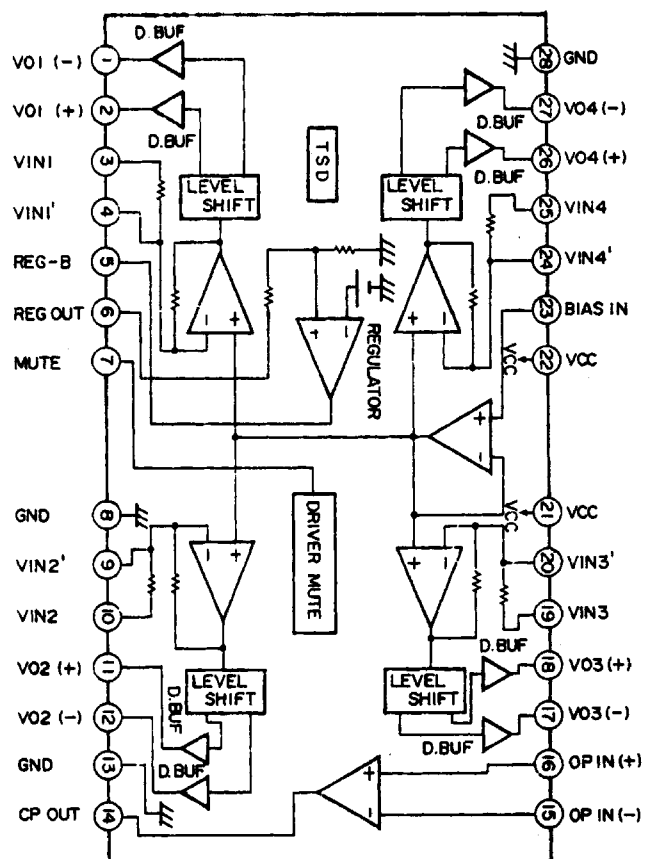


## 11.2. Display Block



IC902 : PNA4602M01MC

## 11.3. CD Servo Block



IC301 : C0GBY0000020

# 12 REPLACEMENT PARTS LIST

Notes :

1. Be sure to make your orders of replacement parts according to this list.
2. Important safety notice: Components, identified by  $\Delta$  mark have special characteristics important for safety. When replacing any of these components, use only manufacturer's specified parts.
3. Location keys in the remarks column indicates the general location of the parts shown in the exploded drawing, as in a road map.
4. The marking (RTL) indicates that Retention Time is limited for this item. After the discontinuation of assembly in production, the item will continue to be available for a specific period of time. The retention period of availability is dependent on the type of assembly, and in accordance with the laws governing part and product retention. After the end of this period, the assembly will no longer be available.
  - Order intake period is basically six months after the first shipment.
5. "A", "B", "C", "D", "E", "F" and "G" marks in remarks column are indicated as follows :
  - A : CQ-RDP153N
  - B : CQ-RDP143N
  - C : CQ-RDP133N
  - D : CQ-RDP123N
  - E : CQ-RDP113N
  - F : CQ-RDP103N
  - G : CQ-RDP003N

Ref. No.	Part No.	Part Name & Description	Remarks
[E6925] Main Block			
IC's AND TRANSISTORS			
IC201	C1BB00000543	IC	
IC271	C1EA00000026	IC	
IC401	C1BB00000644	IC	
IC601	C2CBHF000281	IC	
IC650	YRAMC14584BE	IC	A, B, C
IC701	C0EBG0000038	IC	
IC702	C0CAAGG00018	IC	
IC703	C0CAAYG00005	IC	
IC704	C0CAAGG00018	IC	
IC705	C0CAADG00035	IC	
IC901	YRAMDA7479D	IC	
PA51	C5BA00000110	Electronic Tuner	
Q50	YEANFP1F3PT1	Transistor	
Q51	B1GBCFNN0004	Transistor	
Q52	B1GDCFN00002	Transistor	
Q53	B1ABCF000044	Transistor	
Q253	YEANC323TUTX	Transistor	
Q255	YEANC323TUTX	Transistor	
Q353	YEANC323TUTX	Transistor	
Q355	YEANC323TUTX	Transistor	
Q401	YEAN2SK536TB	Transistor	
Q660	B1GDCFJJ0002	Transistor	
Q661	B1GDCFJJ0002	Transistor	
Q701	B1BBAC000007	Transistor	
Q702	B1BBAC000007	Transistor	
Q703	YEANFP1F3PT1	Transistor	
Q704	B1BACG000022	Transistor	
Q705	YEANB1243QRT	Transistor	
Q706	YEANFB1F3PT1	Transistor	

Ref. No.	Part No.	Part Name & Description	Remarks
Q709	B1GDCFN00002	Transistor	
Q710	B1GBCFCJ0005	Transistor	
Q713	2SD1994ATA	Transistor	
DIODES			
D51	MA165TA	Diode	
D52	MA723TA	Diode	
D270	YEAD11ES2T	Diode	
D271	YEADDSMLD2T7	Diode	
D272	YEAD11ES2T	Diode	
D273	YEAD11ES2T	Diode	
D370	YEADDSMLD2T7	Diode	
D371	YEAD11ES2T	Diode	
D372	YEAD11ES2T	Diode	
D373	YEAD11ES2T	Diode	
D602	MA3X152A0L	Diode	
D603	MA152WATX	Diode	
D701	YEADDAM3MA47	Diode	
D702	YEAD11ES2T	Diode	
D703	B0AACK000004	Diode	
D704	YEADRD56JS2	Diode	
D705	B0AACK000004	Diode	
D706	B0BA8R700011	Diode	
D707	B0AAMQ000001	Diode	
D708	YEADRD51JS2T	Diode	
D709	B0BA6R700008	Diode	
D710	B0EAMN000001	Diode	B, C, E, F, G
D711	YEAD11ES2T	Diode	
CAPACITORS			
C50	YECUS1H100CC	Ceramic, 10PF 50WV	
C51	FLJ1H103A513	Ceramic, 0.01 $\mu$ F 50WV	
C52	FLJ1H103A513	Ceramic, 0.01 $\mu$ F 50WV	
C53	ECA1AM331I	Electrolytic, 330 $\mu$ F 10WV	
C54	YECUS1H183KX	Ceramic, 0.018 $\mu$ F 50WV	
C55	YECUS1H183KX	Ceramic, 0.018 $\mu$ F 50WV	
C56	YECUS1H470JC	Ceramic, 47PF 50WV	
C57	FLJ1H1020024	Ceramic, 0.001 $\mu$ F 50WV	
C58	FLJ1H471A672	Ceramic, 470PF 50WV	
C201	FLJ1H681A672	Ceramic, 680PF 50WV	
C202	FLJ1H681A672	Ceramic, 680PF 50WV	
C203	YECUS1C334KX	Ceramic, 0.33 $\mu$ F 16WV	
C204	FLJ1A2250004	Ceramic, 2.2 $\mu$ F 10WV	A, B, C
C205	F2A1H1R0A154	Electrolytic, 1 $\mu$ F 50WV	
C206	YECUS1C104KX	Ceramic, 0.1 $\mu$ F 16WV	
C207	FLJ1A2250004	Ceramic, 2.2 $\mu$ F 10WV	
C208	F2A1H2R2A154	Electrolytic, 2.2 $\mu$ F 50WV	
C210	F2A1C100A150	Electrolytic, 10 $\mu$ F 16WV	
C211	YECUS1C104KX	Ceramic, 0.1 $\mu$ F 16WV	
C212	ECEA1AKS221I	Electrolytic, 220 $\mu$ F 10WV	
C251	F2A1E4R70028	Electrolytic, 4.7 $\mu$ F 25WV	
C252	F2A1E4R70028	Electrolytic, 4.7 $\mu$ F 25WV	
C260	FLJ1C1050013	Ceramic, 1 $\mu$ F 16WV	
C261	FLJ1C1050013	Ceramic, 1 $\mu$ F 16WV	
C270	FLJ1C1050013	Ceramic, 1 $\mu$ F 16WV	
C271	FLJ1C1050013	Ceramic, 1 $\mu$ F 16WV	
C272	F2A1C220A150	Electrolytic, 22 $\mu$ F 16WV	
C273	F2A1H1R0A154	Electrolytic, 1 $\mu$ F 50WV	
C274	YECUS1E104ZF	Ceramic, 0.1 $\mu$ F 25WV	
C275	F2A1C470A150	Electrolytic, 47 $\mu$ F 16WV	
C276	FLJ1H122A675	Ceramic, 0.0012 $\mu$ F 50WV	
C277	FLJ1H122A675	Ceramic, 0.0012 $\mu$ F 50WV	
C278	FLJ1H122A675	Ceramic, 0.0012 $\mu$ F 50WV	
C279	FLJ1H122A675	Ceramic, 0.0012 $\mu$ F 50WV	
C280	F2A1H2R2A154	Electrolytic, 2.2 $\mu$ F 50WV	
C281	ECA1CDT332Y	Electrolytic, 3300 $\mu$ F 16WV	
C282	YECUS1E104ZF	Ceramic, 0.1 $\mu$ F 25WV	
C301	FLJ1H681A672	Ceramic, 680PF 50WV	
C302	FLJ1H681A672	Ceramic, 680PF 50WV	
C303	YECUS1C334KX	Ceramic, 0.33 $\mu$ F 16WV	

Ref. No.	Part No.	Part Name & Description	Remarks
C304	F1J1A2250004	Ceramic, 2.2 $\mu$ F 10WV	A, B, C
C305	F2A1H1R0A154	Electrolytic, 1 $\mu$ F 50WV	
C308	F2A1H2R2A154	Electrolytic, 2.2 $\mu$ F 50WV	
C351	F2A1E4R70028	Electrolytic, 4.7 $\mu$ F 25WV	
C352	F2A1E4R70028	Electrolytic, 4.7 $\mu$ F 25WV	
C360	F1J1C1050013	Ceramic, 1 $\mu$ F 16WV	
C361	F1J1C1050013	Ceramic, 1 $\mu$ F 16WV	
C370	F1J1C1050013	Ceramic, 1 $\mu$ F 16WV	
C371	F1J1C1050013	Ceramic, 1 $\mu$ F 16WV	
C401	F1J1H120A025	Ceramic, 12PF 50WV	
C402	F1J1H120A025	Ceramic, 12PF 50WV	
C403	F2A0J101A164	Electrolytic, 100 $\mu$ F 6.3WV	
C404	F1J1H103A513	Ceramic, 0.01 $\mu$ F 50WV	
C405	F1J1H101A672	Ceramic, 100PF 50WV	
C406	YECUS1E223KX	Ceramic, 0.022 $\mu$ F 25WV	
C407	ECQV1H104B46	Plastic Film, 0.1 $\mu$ F 50WV	
C408	F1J1H103A513	Ceramic, 0.01 $\mu$ F 50WV	
C409	ECEA1AKS221I	Electrolytic, 220 $\mu$ F 10WV	
C410	ECEA1AKS221I	Electrolytic, 220 $\mu$ F 10WV	
C411	ECEA1AKS221I	Electrolytic, 220 $\mu$ F 10WV	
C600	YECUS1C104KX	Ceramic, 0.1 $\mu$ F 16WV	
C601	F1J1H103A513	Ceramic, 0.01 $\mu$ F 50WV	
C602	F1J1H103A513	Ceramic, 0.01 $\mu$ F 50WV	
C603	YECUS1H220JC	Ceramic, 22PF 50WV	
C604	F1J1H200A025	Ceramic, 20PF 50WV	
C605	F1J1H120A025	Ceramic, 12PF 50WV	
C606	F1J1H120A025	Ceramic, 12PF 50WV	
C607	YECUS1C104KX	Ceramic, 0.1 $\mu$ F 16WV	
C608	F1J1H103A513	Ceramic, 0.01 $\mu$ F 50WV	
C609	F2A0J331A164	Electrolytic, 330 $\mu$ F 6.3WV	
C610	EECS0HD473H	Electrolytic, 0.047 $\mu$ F 5.5WV	
C612	F1J1H103A513	Ceramic, 0.01 $\mu$ F 50WV	
C613	F1J1H103A513	Ceramic, 0.01 $\mu$ F 50WV	
C651	F1J1H103A513	Ceramic, 0.01 $\mu$ F 50WV	A, B, C
C655	YECUS1E104ZF	Ceramic, 0.1 $\mu$ F 25WV	
C656	YECUS1E104ZF	Ceramic, 0.1 $\mu$ F 25WV	
C660	F2A1H1R0A154	Electrolytic, 1 $\mu$ F 50WV	
C661	F1J1H103A513	Ceramic, 0.01 $\mu$ F 50WV	
C700	ECALCDT102BQ	Electrolytic, 1000 $\mu$ F 16WV	
C701	F2A1C101A150	Electrolytic, 100 $\mu$ F 16WV	
C702	F2A0J470A164	Electrolytic, 47 $\mu$ F 6.3WV	
C703	F2A0J470A164	Electrolytic, 47 $\mu$ F 6.3WV	
C704	ECEA1AKS221I	Electrolytic, 220 $\mu$ F 10WV	
C707	YECUS1E104ZF	Ceramic, 0.1 $\mu$ F 25WV	
C708	YECUS1E104ZF	Ceramic, 0.1 $\mu$ F 25WV	
C709	F2A1H1R0A154	Electrolytic, 1 $\mu$ F 50WV	
C712	YECUS1E224ZF	Ceramic, 0.22 $\mu$ F 25WV	
C713	YECUS1C224KX	Ceramic, 0.22 $\mu$ F 16WV	
C714	F2A1C470A150	Electrolytic, 47 $\mu$ F 16WV	
C715	YECUS1C224KX	Ceramic, 0.22 $\mu$ F 16WV	
C716	YECUS1C224KX	Ceramic, 0.22 $\mu$ F 16WV	
C717	YECUS1C224KX	Ceramic, 0.22 $\mu$ F 16WV	
C718	F2A1A101A144	Electrolytic, 100 $\mu$ F 10WV	
C719	YECUS1C224KX	Ceramic, 0.22 $\mu$ F 16WV	
C720	F2A0J101A164	Electrolytic, 100 $\mu$ F 6.3WV	
C730	YECUS1E224ZF	Ceramic, 0.22 $\mu$ F 25WV	
C731	YECUS1E224ZF	Ceramic, 0.22 $\mu$ F 25WV	
C732	F2A1C470A150	Electrolytic, 47 $\mu$ F 16WV	
C901	YECUS1C104KX	Ceramic, 0.1 $\mu$ F 16WV	
C902	YECUS1H100CC	Ceramic, 10PF 50WV	
C903	YECUS1H100CC	Ceramic, 10PF 50WV	
C904	F1J1H103A513	Ceramic, 0.01 $\mu$ F 50WV	
C906	F1J1H271A672	Ceramic, 270PF 50WV	
C907	F2A1C100A150	Electrolytic, 10 $\mu$ F 16WV	
RESISTORS			
J101	ERJ6GEY0R00V	Chip, 0 $\Omega$ 1/10W	
J103	ERJ6GEY0R00V	Chip, 0 $\Omega$ 1/10W	
J105	ERJ6GEY0R00V	Chip, 0 $\Omega$ 1/10W	A, B, C
J106	ERJ6GEY0R00V	Chip, 0 $\Omega$ 1/10W	
J109	ERJ6GEY0R00V	Chip, 0 $\Omega$ 1/10W	
J110	ERJ6GEY0R00V	Chip, 0 $\Omega$ 1/10W	

Ref. No.	Part No.	Part Name & Description	Remarks
J113	ERJ6GEY0R00V	Chip, 0 $\Omega$ 1/10W	
J114	ERJ6GEY0R00V	Chip, 0 $\Omega$ 1/10W	
J117	ERJ6GEY0R00V	Chip, 0 $\Omega$ 1/10W	
J118	ERJ6GEY0R00V	Chip, 0 $\Omega$ 1/10W	
J200	ERJ8GEY0R00V	Chip, 0 $\Omega$ 1/8W	
J201	ERJ8GX0R00V	Chip, 0 $\Omega$ 1/8W	
J202	ERJ8GX0R00V	Chip, 0 $\Omega$ 1/8W	
J203	ERJ8GX0R00V	Chip, 0 $\Omega$ 1/8W	
J205	ERJ8GEY0R00V	Chip, 0 $\Omega$ 1/8W	
J206	ERJ8GEY0R00V	Chip, 0 $\Omega$ 1/8W	
J207	ERJ8GEY0R00V	Chip, 0 $\Omega$ 1/8W	
J208	ERJ8GEY0R00V	Chip, 0 $\Omega$ 1/8W	
J210	ERJ8GX0R00V	Chip, 0 $\Omega$ 1/8W	
J211	ERJ8GEY0R00V	Chip, 0 $\Omega$ 1/8W	
J213	ERJ8GX0R00V	Chip, 0 $\Omega$ 1/8W	
J214	ERJ8GX0R00V	Chip, 0 $\Omega$ 1/8W	
J215	ERJ8GX0R00V	Chip, 0 $\Omega$ 1/8W	
J216	ERJ8GEY0R00V	Chip, 0 $\Omega$ 1/8W	
J217	ERJ8GEY0R00V	Chip, 0 $\Omega$ 1/8W	
J218	ERJ8GX0R00V	Chip, 0 $\Omega$ 1/8W	
J219	ERJ8GEY0R00V	Chip, 0 $\Omega$ 1/8W	
J220	ERJ8GX0R00V	Chip, 0 $\Omega$ 1/8W	
J221	ERJ8GX0R00V	Chip, 0 $\Omega$ 1/8W	
J223	ERJ8GEY0R00V	Chip, 0 $\Omega$ 1/8W	
J224	ERJ8GEY0R00V	Chip, 0 $\Omega$ 1/8W	
J225	ERJ8GEY0R00V	Chip, 0 $\Omega$ 1/8W	
J226	ERJ8GEY0R00V	Chip, 0 $\Omega$ 1/8W	
J227	ERJ8GEY0R00V	Chip, 0 $\Omega$ 1/8W	
J228	ERJ8GEY0R00V	Chip, 0 $\Omega$ 1/8W	
J229	ERJ8GEY0R00V	Chip, 0 $\Omega$ 1/8W	
J230	ERJ8GX0R00V	Chip, 0 $\Omega$ 1/8W	
J231	ERJ8GEY0R00V	Chip, 0 $\Omega$ 1/8W	
J232	ERJ8GEY0R00V	Chip, 0 $\Omega$ 1/8W	
J233	ERJ8GEY0R00V	Chip, 0 $\Omega$ 1/8W	A, B, C
J234	ERJ8GEY0R00V	Chip, 0 $\Omega$ 1/8W	
J235	ERJ8GEY0R00V	Chip, 0 $\Omega$ 1/8W	
J236	ERJ8GX0R00V	Chip, 0 $\Omega$ 1/8W	
J237	ERJ8GEY0R00V	Chip, 0 $\Omega$ 1/8W	A, B, C
J238	ERJ8GEY0R00V	Chip, 0 $\Omega$ 1/8W	
J239	ERJ8GEY0R00V	Chip, 0 $\Omega$ 1/8W	
J240	ERJ8GEY0R00V	Chip, 0 $\Omega$ 1/8W	
J241	ERJ8GEY0R00V	Chip, 0 $\Omega$ 1/8W	
J242	ERJ8GEY0R00V	Chip, 0 $\Omega$ 1/8W	
J243	ERJ8GEY0R00V	Chip, 0 $\Omega$ 1/8W	
J244	ERJ8GEY0R00V	Chip, 0 $\Omega$ 1/8W	
J245	ERJ8GEY0R00V	Chip, 0 $\Omega$ 1/8W	
J246	ERJ8GEY0R00V	Chip, 0 $\Omega$ 1/8W	
J247	ERJ8GEY0R00V	Chip, 0 $\Omega$ 1/8W	
J248	ERJ8GEY0R00V	Chip, 0 $\Omega$ 1/8W	
J249	ERJ8GEY0R00V	Chip, 0 $\Omega$ 1/8W	
J250	ERJ8GEY0R00V	Chip, 0 $\Omega$ 1/8W	
J251	ERJ8GEY0R00V	Chip, 0 $\Omega$ 1/8W	
J252	ERJ8GEY0R00V	Chip, 0 $\Omega$ 1/8W	
J253	ERJ8GEY0R00V	Chip, 0 $\Omega$ 1/8W	
J254	ERJ8GEY0R00V	Chip, 0 $\Omega$ 1/8W	
J255	ERJ8GX0R00V	Chip, 0 $\Omega$ 1/8W	
J256	ERJ8GX0R00V	Chip, 0 $\Omega$ 1/8W	
J257	ERJ8GEY0R00V	Chip, 0 $\Omega$ 1/8W	A, B, C
J259	ERJ8GEY0R00V	Chip, 0 $\Omega$ 1/8W	
J260	ERJ8GX0R00V	Chip, 0 $\Omega$ 1/8W	
J261	ERJ8GEY0R00V	Chip, 0 $\Omega$ 1/8W	
J264	ERJ8GX0R00V	Chip, 0 $\Omega$ 1/8W	
J265	ERJ8GX0R00V	Chip, 0 $\Omega$ 1/8W	
J266	ERJ8GX0R00V	Chip, 0 $\Omega$ 1/8W	
J267	ERJ8GX0R00V	Chip, 0 $\Omega$ 1/8W	
J270	ERJ8GEY0R00V	Chip, 0 $\Omega$ 1/8W	
J271	ERJ8GEY0R00V	Chip, 0 $\Omega$ 1/8W	
J272	ERJ8GEY0R00V	Chip, 0 $\Omega$ 1/8W	
J273	ERJ8GX0R00V	Chip, 0 $\Omega$ 1/8W	
J274	ERJ8GX0R00V	Chip, 0 $\Omega$ 1/8W	
J276	ERJ8GX0R00V	Chip, 0 $\Omega$ 1/8W	
R50	ERJ6GEYJ5R6	Chip, 5.6 $\Omega$ 1/10W	
R52	ERJ8GEYJ101V	Chip, 100 $\Omega$ 1/8W	

Ref. No.	Part No.	Part Name & Description	Remarks
R53	ERJ6GEYJ471	Chip, 470Ω 1/10W	
R55	ERJ6GEYJ393	Chip, 39kΩ 1/10W	
R56	ERJ6GEYJ334	Chip, 330kΩ 1/10W	
R57	ERJ6GEYJ222	Chip, 2.2kΩ 1/10W	
R58	ERJ6GEYJ102	Chip, 1kΩ 1/10W	
R200	ERJ6GEYJ363V	Chip, 36kΩ 1/10W	
R201	ERJ6GEYJ562	Chip, 5.6kΩ 1/10W	A, B, C
R202	ERJ6GEYJ103	Chip, 10kΩ 1/10W	A, B, C
R203	ERJ6GEYJ272	Chip, 2.7kΩ 1/10W	
R204	ERJ6GEYJ272	Chip, 2.7kΩ 1/10W	
R251	ERJ6GEYJ101	Chip, 100Ω 1/10W	
R252	ERJ6GEYJ101	Chip, 100Ω 1/10W	
R253	ERJ6GEYJ472	Chip, 4.7kΩ 1/10W	
R254	ERJ6GEYJ101	Chip, 100Ω 1/10W	A, B, C
R255	ERJ6GEYJ472	Chip, 4.7kΩ 1/10W	
R256	ERJ6GEYJ101	Chip, 100Ω 1/10W	
R300	ERJ6GEYJ363V	Chip, 36kΩ 1/10W	
R301	ERJ6GEYJ562	Chip, 5.6kΩ 1/10W	A, B, C
R302	ERJ6GEYJ103	Chip, 10kΩ 1/10W	A, B, C
R303	ERJ6GEYJ272	Chip, 2.7kΩ 1/10W	
R304	ERJ6GEYJ272	Chip, 2.7kΩ 1/10W	
R351	ERJ6GEYJ101	Chip, 100Ω 1/10W	
R352	ERJ6GEYJ101	Chip, 100Ω 1/10W	
R353	ERJ6GEYJ472	Chip, 4.7kΩ 1/10W	
R354	ERJ6GEYJ101	Chip, 100Ω 1/10W	A, B, C
R355	ERJ6GEYJ472	Chip, 4.7kΩ 1/10W	
R356	ERJ6GEYJ101	Chip, 100Ω 1/10W	
R401	ERJ6GEYJ152	Chip, 1.5kΩ 1/10W	
R402	ERJ6GEYJ473	Chip, 47kΩ 1/10W	
R403	ERJ6GEYJ473	Chip, 47kΩ 1/10W	
R404	ERJ6GEYJ222	Chip, 2.2kΩ 1/10W	
R405	ERJ6GEYJ182	Chip, 1.8kΩ 1/10W	
R406	ERJ8GEYJ561V	Chip, 560Ω 1/8W	
R411	ERJ6GEYJ100	Chip, 10Ω 1/10W	
R412	ERJ8GEYJ104V	Chip, 100kΩ 1/8W	
R600	ERJ6GEYJ473	Chip, 47kΩ 1/10W	D, E, F, G
R601	ERJ6GEYJ473	Chip, 47kΩ 1/10W	A, B, C
R609	ERJ6GEYOR00V	Chip, 0Ω 1/10W	
R611	ERJ6GEYJ102	Chip, 1kΩ 1/10W	
R612	ERD25TJ102	Carbon, 1kΩ 1/4W	
R613	ERD25TJ102	Carbon, 1kΩ 1/4W	
R614	ERD25TJ102	Carbon, 1kΩ 1/4W	
R615	ERD25TJ102	Carbon, 1kΩ 1/4W	
R616	ERJ6GEYJ222	Chip, 2.2kΩ 1/10W	
R617	ERJ6GEYJ473	Chip, 47kΩ 1/10W	
R618	ERJ6GEYJ471	Chip, 470Ω 1/10W	
R619	ERDS2FJ100	Carbon, 10Ω 1/2W	
R620	ERJ6GEYJ103	Chip, 10kΩ 1/10W	
R621	ERJ6GEYJ102	Chip, 1kΩ 1/10W	
R622	ERJ6GEYJ102	Chip, 1kΩ 1/10W	
R623	ERJ6GEYJ102	Chip, 1kΩ 1/10W	
R624	ERJ6GEYJ102	Chip, 1kΩ 1/10W	
R625	ERJ6GEYJ102	Chip, 1kΩ 1/10W	
R626	ERJ6GEYJ102	Chip, 1kΩ 1/10W	
R627	ERJ6GEYJ102	Chip, 1kΩ 1/10W	
R628	ERJ6GEYJ102	Chip, 1kΩ 1/10W	
R629	ERJ6GEYJ102	Chip, 1kΩ 1/10W	
R631	ERJ6GEYJ184	Chip, 180kΩ 1/10W	
R633	ERJ6GEYJ102	Chip, 1kΩ 1/10W	
R634	ERJ6GEYJ102	Chip, 1kΩ 1/10W	
R635	ERJ6GEYJ102	Chip, 1kΩ 1/10W	
R636	ERJ6GEYJ103	Chip, 10kΩ 1/10W	
R637	ERJ6GEYJ103	Chip, 10kΩ 1/10W	
R640	ERJ6GEYJ822	Chip, 8.2kΩ 1/10W	
R641	ERJ6GEYJ333	Chip, 33kΩ 1/10W	
R642	ERJ6GEYJ473	Chip, 47kΩ 1/10W	
R643	ERJ6GEYJ473	Chip, 47kΩ 1/10W	
R644	ERJ6GEYJ473	Chip, 47kΩ 1/10W	
R651	ERJ6GEYJ104	Chip, 100kΩ 1/10W	A, B, C
R652	ERJ6GEYJ104	Chip, 100kΩ 1/10W	A, B, C
R653	ERJ6GEYJ104	Chip, 100kΩ 1/10W	A, B, C
R655	ERJ6GEYJ102	Chip, 1kΩ 1/10W	

Ref. No.	Part No.	Part Name & Description	Remarks
R656	ERJ6GEYJ183	Chip, 18kΩ 1/10W	
R657	ERJ6GEYJ682	Chip, 6.8kΩ 1/10W	
R658	ERJ6GEYJ392	Chip, 3.9kΩ 1/10W	
R660	ERJ6GEYJ472	Chip, 4.7kΩ 1/10W	
R661	ERJ6GEYJ393	Chip, 39kΩ 1/10W	
R662	ERJ6GEYJ682	Chip, 6.8kΩ 1/10W	
R663	ERJ6GEYJ223	Chip, 22kΩ 1/10W	
R664	ERJ6GEYOR00V	Chip, 0Ω 1/10W	
R666	ERJ6GEYOR00V	Chip, 0Ω 1/10W	
R668	ERJ6GEYOR00V	Chip, 0Ω 1/10W	
R669	ERJ6GEYOR00V	Chip, 0Ω 1/10W	
R670	ERJ6GEYJ154	Chip, 150kΩ 1/10W	
R671	ERJ6GEYJ472	Chip, 4.7kΩ 1/10W	
R672	ERJ6GEYJ821	Chip, 820Ω 1/10W	
R680	ERJ6GEYJ824	Chip, 820kΩ 1/10W	
R681	ERJ6GEYJ472	Chip, 4.7kΩ 1/10W	
R682	ERJ6GEYOR00V	Chip, 0Ω 1/10W	
R683	ERJ6GEYJ473	Chip, 47kΩ 1/10W	D, E, F, G
R684	ERJ6GEYJ103	Chip, 10kΩ 1/10W	
R685	ERJ6GEYJ103	Chip, 10kΩ 1/10W	
R686	ERJ8GEYJ473V	Chip, 47kΩ 1/8W	
R687	ERJ6GEYJ103	Chip, 10kΩ 1/10W	
R688	ERJ6GEYJ103	Chip, 10kΩ 1/10W	
R701	ERJ8GEYJ4R7V	Chip, 4.7Ω 1/8W	
R702	ERJ8GEYJ4R7V	Chip, 4.7Ω 1/8W	
R703	ERJ6GEYJ682	Chip, 6.8kΩ 1/10W	
R704	ERDS2FJ1R0T	Carbon, 1.0Ω 1/4W	
R705	ERDS2TJ471	Carbon, 470Ω 1/4W	
R706	ERJ6GEYJ473	Chip, 47kΩ 1/10W	
R707	ERDS1FJ681	Carbon, 680Ω 1/2W	
R708	ERDS1FJ681	Carbon, 680Ω 1/2W	
R709	ERJ6GEYJ133	Chip, 13kΩ 1/10W	
R710	ERJ6GEYJ113	Chip, 11kΩ 1/10W	
R712	ERJ6GEYJ223	Chip, 22kΩ 1/10W	
R713	ERJ6GEYJ154	Chip, 150kΩ 1/10W	
R714	ERJ6GEYJ473	Chip, 47kΩ 1/10W	
R715	ERJ6GEYJ473	Chip, 47kΩ 1/10W	
R716	ERDS2FJ1R0T	Carbon, 1.0Ω 1/4W	
R717	ERJ6GEYJ223	Chip, 22kΩ 1/10W	
R901	ERJ6GEYJ225V	Chip, 2.2MΩ 1/10W	
R902	ERJ8GEYJ103V	Chip, 10kΩ 1/8W	
R903	ERJ8GEYJ103V	Chip, 10kΩ 1/8W	
CONNECTORS			
CN251	YEA012503	Connector, 2P RCA	A, B, C
CN301	K2HA104B0010	Connector, 4P RCA	A, B, C
CN301	K2HA102B0061	Connector, 2P RCA	D, E, F, G
CN601	YEA012475	Connector, 12P	
CN620	YEAETKWC22PS	Connector, 22P	
CN660	YEA0616YAA	Connector, 6P	A, B, C
CN680	YEA012307	Connector, 8P DIN	A, B, C
CN701	K1FA116B0028	Connector, 16P	
CRYSTALS			
XL401	H0D720400006	Crystal OSC	
XL601	H0D125500006	Crystal OSC	
XL602	H0A327200019	Crystal OSC	
XL901	H0D433400003	Crystal OSC	
COILS			
L50	G1C150K00011	Coil	
L51	G1CR56K00009	Coil	
L401	YELT02C101KT	Coil	
L701	YETQ026F143	Coil	
L702	YELT02C330KT	Coil	
L901	YELT02C330KT	Coil	

Ref. No.	Part No.	Part Name & Description	Remarks
<b>NEON TUBE</b>			
Z50	YEAL02010T	Neon Tube	
<b>THERMISTOR</b>			
PT701	VERT7AR4R7MT	Thermistor	
<b>[E9243] Display Block</b>			
<b>IC's AND TRANSISTORS</b>			
IC901	YEAMLC75854T	IC	
IC902	PNA4602M01MC	IC	
Q901	B1GDCFJJ0002	Transistor	
<b>DIODEs</b>			
D901	MA8056LMHTX	Diode	
D902	MA8056LMHTX	Diode	
D903	MA8056LMHTX	Diode	
D904	MA8056LMHTX	Diode	
D905	MA8056LMHTX	Diode	
D909	B3AEB0000025	LED	A, D
D909	B3ACB0000100	LED	B, E, G
D909	B3ABB0000162	LED	C, F
D911	B3AEB0000025	LED	A, D
D912	B3AEB0000025	LED	A, D
D913	B3AAB0000143	LED	A, D
D913	B3ADB0000043	LED	B, E, G
D913	B3ABB0000161	LED	C, F
D914	B3AAB0000143	LED	A, D
D914	B3ADB0000043	LED	B, E, G
D914	B3ABB0000161	LED	C, F
D915	B3AAB0000143	LED	A, D
D915	B3ADB0000043	LED	B, E, G
D915	B3ABB0000161	LED	C, F
D916	B3AAB0000143	LED	A, D
D916	B3ADB0000043	LED	B, E, G
D916	B3ABB0000161	LED	C, F
D917	B3AAB0000143	LED	A, D
D917	B3ADB0000043	LED	B, E, G
D917	B3ABB0000161	LED	C, F
D918	B3AAB0000143	LED	A, D
D918	B3ADB0000043	LED	B, E, G
D918	B3ABB0000161	LED	C, F
D919	B3AAB0000143	LED	A, D
D919	B3ADB0000043	LED	B, E, G
D919	B3ABB0000161	LED	C, F
D920	B3AAB0000143	LED	A, D
D920	B3ADB0000043	LED	B, E, G
D920	B3ABB0000160	LED	C, F
D921	B3AAB0000143	LED	A, D
D921	B3ADB0000043	LED	B, E, G
D921	B3ABB0000161	LED	C, F
D922	B3AAB0000143	LED	A, D
D922	B3ADB0000043	LED	B, E, G
D922	B3ABB0000161	LED	C, F
D923	B3AAB0000143	LED	A, D
D923	B3ADB0000043	LED	B, E, G
D923	B3ABB0000160	LED	C, F
D924	B3AAB0000143	LED	A, D
D924	B3ADB0000043	LED	B, E, G
D924	B3ABB0000161	LED	C, F
D925	B3AAB0000143	LED	A, D
D925	B3ADB0000043	LED	B, E, G
D925	B3ABB0000160	LED	C, F
D926	B3AAB0000143	LED	A, D
D926	B3ADB0000043	LED	B, E, G
D926	B3ABB0000161	LED	C, F
D927	B3AAB0000143	LED	A, D
D927	B3ADB0000043	LED	B, E, G
D927	B3ABB0000161	LED	C, F
D928	B3AAB0000143	LED	A, D

Ref. No.	Part No.	Part Name & Description	Remarks
D928	B3ADB0000043	LED	B, E, G
D928	B3ABB0000160	LED	C, F
D930	B3AAB0000143	LED	
<b>CAPACITORS</b>			
C901	YECUS1E104ZF	Ceramic, 0.1pF 25WV	
C902	YECUS1E104ZF	Ceramic, 0.1pF 25WV	
C903	YECUS1H681JC	Ceramic, 680PF 50WV	
C904	YECUS1E104ZF	Ceramic, 0.1pF 25WV	
C905	YECUS1E104ZF	Ceramic, 0.1pF 25WV	
C906	FLJ1H1020024	Ceramic, 0.001pF 50WV	
C907	YECUS1E104ZF	Ceramic, 0.1pF 25WV	
<b>RESISTORS</b>			
R901	ERJ6GEY0R00V	Chip, 0Ω 1/10W	
R902	ERJ6GEYJ473	Chip, 47kΩ 1/10W	
R903	ERJ6GEYJ102	Chip, 1kΩ 1/10W	
R904	ERJ6GEYJ1R0	Chip, 1Ω 1/10W	
R905	ERJ6GEYJ102	Chip, 1kΩ 1/10W	
R906	ERJ6GEYJ102	Chip, 1kΩ 1/10W	
R907	ERJ6GEYJ102	Chip, 1kΩ 1/10W	
R908	ERJ6GEYJ102	Chip, 1kΩ 1/10W	
R909	ERJ6GEYJ102	Chip, 1kΩ 1/10W	
R910	ERJ6GEYJ103	Chip, 10kΩ 1/10W	
R911	ERJ6GEYJ681	Chip, 680Ω 1/10W	
R920	ERJ8GEYJ181V	Chip, 180Ω 1/8W	A, D
R920	ERJ8GEYJ391V	Chip, 390Ω 1/8W	C, F
R921	ERJ8GEYJ471V	Chip, 470Ω 1/8W	A, D
R921	ERJ8GEYJ221V	Chip, 220Ω 1/8W	B, E, G
R921	ERJ8GEYJ751V	Chip, 750Ω 1/8W	C, F
R923	ERJ6GEYJ471	Chip, 470Ω 1/10W	A, D
R923	ERJ6GEYJ560	Chip, 56Ω 1/10W	B, E, G
R923	ERJ6GEYJ680	Chip, 68Ω 1/10W	C, F
R924	ERJ6GEYJ391	Chip, 390Ω 1/10W	A, D
R924	ERJ6GEYJ560	Chip, 56Ω 1/10W	B, E, G
R924	ERJ6GEYJ680	Chip, 68Ω 1/10W	C, F
R925	ERJ6GEYJ391	Chip, 390Ω 1/10W	A, D
R925	ERJ6GEYJ560	Chip, 56Ω 1/10W	B, E, G
R925	ERJ6GEYJ680	Chip, 68Ω 1/10W	C, F
R927	ERJ6GEYJ621V	Chip, 620Ω 1/10W	A, D
R927	ERJ6GEYJ151	Chip, 150Ω 1/10W	B, C, E, F, G
R928	ERJ6GEYJ621V	Chip, 620Ω 1/10W	A, D
R928	ERJ6GEYJ560	Chip, 56Ω 1/10W	B, E, G
R928	ERJ6GEYJ680	Chip, 68Ω 1/10W	C, F
R929	ERJ6GEYJ621V	Chip, 620Ω 1/10W	A, D
R929	ERJ6GEYJ151	Chip, 150Ω 1/10W	B, C, E, F, G
<b>CONNECTOR</b>			
CJ601	YEA012476	Connector, 12P	
<b>SWITCHES</b>			
SW901	K9AA024A0007	Switch	
SW902	K0H1BA000445	Switch	
SW903	K0H1BA000445	Switch	
SW904	K0H1BA000445	Switch	
SW905	K0H1BA000445	Switch	
SW906	K0H1BA000445	Switch	
SW907	K0H1BA000445	Switch	
SW908	K0H1BA000445	Switch	
SW909	K0H1BA000445	Switch	
SW910	K0H1BA000445	Switch	
SW911	K0H1BA000445	Switch	
SW912	K0H1BA000445	Switch	
SW913	K0H1BA000445	Switch	
SW914	K0H1BA000445	Switch	
SW915	K0H1BA000445	Switch	
SW916	K0H1BA000445	Switch	

Ref. No.	Part No.	Part Name & Description	Remarks
SW917	K0H1BA000445	Switch	
LCD			
LCD901	L5ACBJB00003	LCD Display	A, D
LCD901	L5ACBJB00002	LCD Display	B, C, E, F, G
[E9242] CD Servo Block			
IC's AND TRANSISTORS			
IC101	C1BB00000665	IC	
IC301	C0GBY0000020	IC	
Q101	2SB766ATX	Transistor	
DIODE			
D101	B0ACCK000005	Diode	
CAPACITORS			
C101	YECUZ1E104ZF	Ceramic, 0.1µF 25WV	
C104	YECUV1H104ZF	Ceramic, 0.1µF 50WV	
C105	ECEV1CA100SR	Electrolytic, 10µF 16WV	
C106	YECUS1E104ZF	Ceramic, 0.1µF 25WV	
C107	ECEV1AA101SP	Electrolytic, 100µF 10WV	
C108	YECUZ1E104ZF	Ceramic, 0.1µF 25WV	
C109	F1J1H102A672	Ceramic, 0.001µF 50WV	
C120	ECEV1CA100SR	Electrolytic, 10µF 16WV	
C121	ECEV1CA100SR	Electrolytic, 10µF 16WV	
C122	YECUZ1E104ZF	Ceramic, 0.1µF 25WV	
C123	YECUZ1E104ZF	Ceramic, 0.1µF 25WV	
C124	YECUZ1H270JC	Ceramic, 27PF 50WV	
C125	YECUZ1H270JC	Ceramic, 27PF 50WV	
C126	YECUZ1H560JC	Ceramic, 56PF 50WV	
C127	ECEV1CA100SR	Electrolytic, 10µF 16WV	
C130	F1H1H8R0A226	Ceramic, 8PF 50WV	
C131	F1J1H4R0A007	Ceramic, 4PF 50WV	
C132	YECUZ1H270JC	Ceramic, 27PF 50WV	
C134	F1H1H4720005	Ceramic, 0.0047µF 50WV	
C140	F1H1H103A783	Ceramic, 0.01µF 50WV	
C141	YECUZ1E104ZF	Ceramic, 0.1µF 25WV	
C143	YECUZ1E104ZF	Ceramic, 0.1µF 25WV	
C144	F1H1H103A783	Ceramic, 0.01µF 50WV	
C145	YECUZ1E104ZF	Ceramic, 0.1µF 25WV	
C146	YECUZ1E104ZF	Ceramic, 0.1µF 25WV	
C301	YECUZ1E223KX	Ceramic, 0.022µF 25WV	
C303	YECUZ1E104ZF	Ceramic, 0.1µF 25WV	
C304	ECEV1CA220SR	Electrolytic, 22µF 16WV	
RESISTORS			
J101	ERJ8GEY0R00V	Chip, 0Ω 1/8W	
J102	ERJ8GEY0R00V	Chip, 0Ω 1/8W	
J103	ERJ8GEY0R00V	Chip, 0Ω 1/8W	
J104	ERJ8GEY0R00V	Chip, 0Ω 1/8W	
J105	ERJ8GEY0R00V	Chip, 0Ω 1/8W	
J106	ERJ8GEY0R00V	Chip, 0Ω 1/8W	
J107	ERJ8GEY0R00V	Chip, 0Ω 1/8W	
J108	ERJ8GEY0R00V	Chip, 0Ω 1/8W	
J109	ERJ8GEY0R00V	Chip, 0Ω 1/8W	
J110	ERJ8GEY0R00V	Chip, 0Ω 1/8W	
J111	ERJ8GEY0R00V	Chip, 0Ω 1/8W	
J112	ERJ8GEY0R00V	Chip, 0Ω 1/8W	
J113	ERJ8GEY0R00V	Chip, 0Ω 1/8W	
J114	ERJ8GEY0R00V	Chip, 0Ω 1/8W	
J115	ERJ8GEY0R00V	Chip, 0Ω 1/8W	
J116	ERJ8GEY0R00V	Chip, 0Ω 1/8W	
J117	ERJ8GEY0R00V	Chip, 0Ω 1/8W	
J118	ERJ8GEY0R00V	Chip, 0Ω 1/8W	
J119	ERJ8GEY0R00V	Chip, 0Ω 1/8W	
J120	ERJ8GEY0R00V	Chip, 0Ω 1/8W	

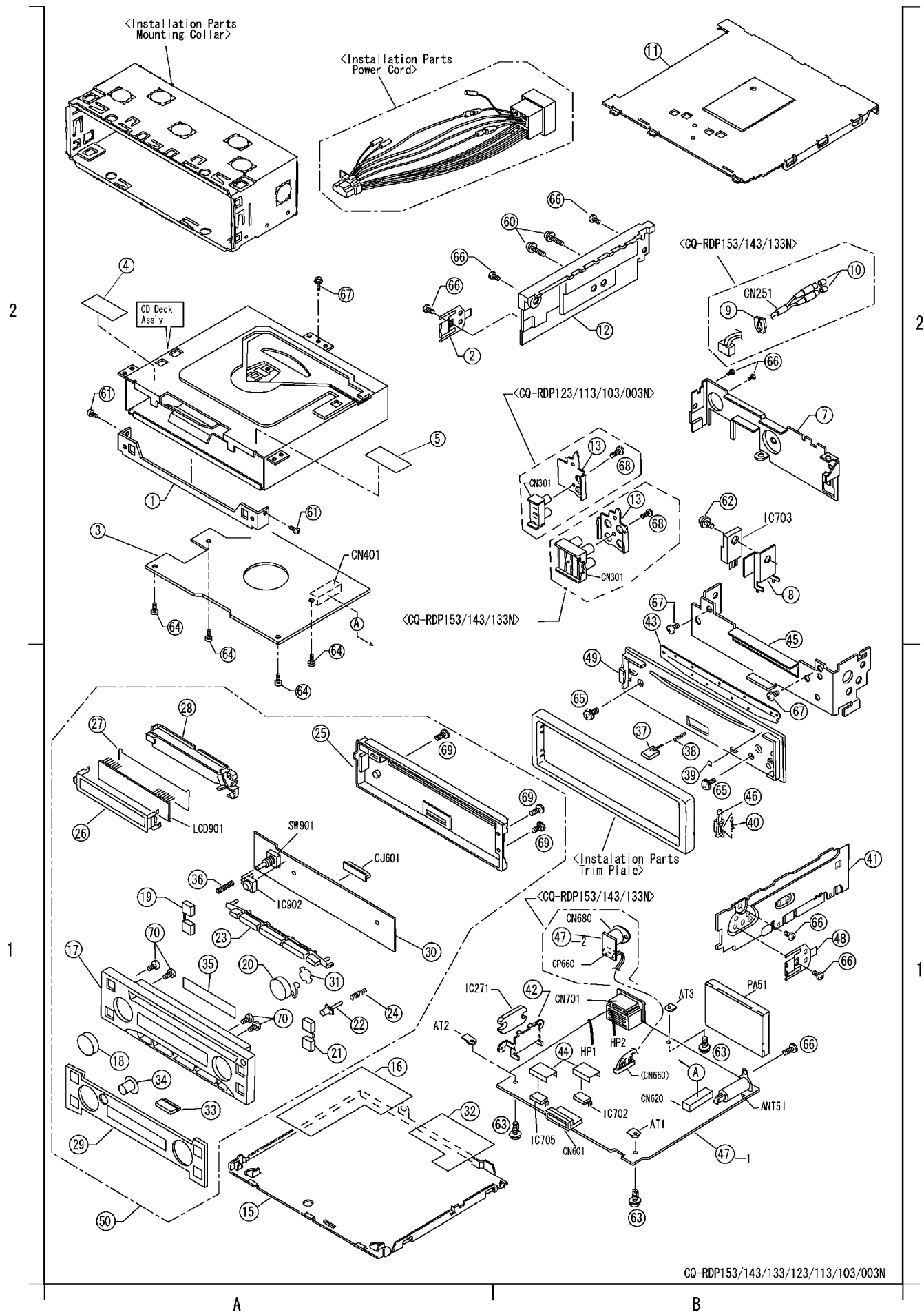
Ref. No.	Part No.	Part Name & Description	Remarks
J121	ERJ8GEY0R00V	Chip, 0Ω 1/8W	
J122	ERJ8GEY0R00V	Chip, 0Ω 1/8W	
J123	ERJ8GEY0R00V	Chip, 0Ω 1/8W	
J124	ERJ8GEY0R00V	Chip, 0Ω 1/8W	
J125	ERJ8GEY0R00V	Chip, 0Ω 1/8W	
J126	ERJ8GEY0R00V	Chip, 0Ω 1/8W	
J127	ERJ8GEY0R00V	Chip, 0Ω 1/8W	
J201	ERJ6GEY0R00V	Chip, 0Ω 1/10W	
J202	ERJ6GEY0R00V	Chip, 0Ω 1/10W	
J203	ERJ6GEY0R00V	Chip, 0Ω 1/10W	
J204	ERJ6GEY0R00V	Chip, 0Ω 1/10W	
J205	ERJ6GEY0R00V	Chip, 0Ω 1/10W	
J206	ERJ6GEY0R00V	Chip, 0Ω 1/10W	
J207	ERJ6GEY0R00V	Chip, 0Ω 1/10W	
J208	ERJ6GEY0R00V	Chip, 0Ω 1/10W	
J209	ERJ6GEY0R00V	Chip, 0Ω 1/10W	
J210	ERJ6GEY0R00V	Chip, 0Ω 1/10W	
J211	ERJ6GEY0R00V	Chip, 0Ω 1/10W	
J212	ERJ6GEY0R00V	Chip, 0Ω 1/10W	
R101	ERJ3GEYJ220V	Chip, 22Ω 1/16W	
R102	ERJ3GEYJ104V	Chip, 100kΩ 1/16W	
R103	ERJ6GEYJ222	Chip, 2.2kΩ 1/10W	
R110	ERJ3GEYJ103V	Chip, 10kΩ 1/16W	
R111	ERJ6GEYJ103	Chip, 10kΩ 1/10W	
R120	ERJ3GEYJ473V	Chip, 47kΩ 1/16W	
R121	ERJ3GEYJ103V	Chip, 10kΩ 1/16W	
R301	ERJ3GEYJ393V	Chip, 39kΩ 1/16W	
R302	ERJ3GEYJ184V	Chip, 180kΩ 1/16W	
R303	ERJ3GEYJ472V	Chip, 4.7kΩ 1/16W	
R304	ERJ3GEYJ392V	Chip, 3.9kΩ 1/16W	
R305	ERJ8GEY0R00V	Chip, 0Ω 1/8W	
R306	ERJ6GEYJ104	Chip, 100kΩ 1/10W	
R307	ERJ8GEY0R00V	Chip, 0Ω 1/8W	
R311	ERJ3GEYJ392V	Chip, 3.9kΩ 1/16W	
R312	ERJ8GEY0R00V	Chip, 0Ω 1/8W	
R313	ERJ6GEYJ392	Chip, 3.9kΩ 1/10W	
R314	ERJ6GEY0R00V	Chip, 0Ω 1/10W	
R401	ERJ6GEYJ102	Chip, 1kΩ 1/10W	
R402	ERJ3GEYJ102V	Chip, 1kΩ 1/16W	
R403	ERJ3GEYJ102V	Chip, 1kΩ 1/16W	
R404	ERJ6GEYJ102	Chip, 1kΩ 1/10W	
R405	ERJ3GEYJ102V	Chip, 1kΩ 1/16W	
R406	ERJ3GEYJ102V	Chip, 1kΩ 1/16W	
R407	ERJ3GEYJ102V	Chip, 1kΩ 1/16W	
R408	ERJ3GEYJ102V	Chip, 1kΩ 1/16W	
CONNECTORS			
CN101	K1MN16B00036	Connector, 6P	
CN301	YEAES04BZRSM	Connector, 4P	
CN302	K1KA02B00051	Connector, 2P	
CN401	YEAES0122TKCR	Connector, 22P	
CN402	YEAES03BZRSM	Connector, 3P	
CERAMIC FILTER			
XL101	H2D169500017	Ceramic Filter	
COIL			
L401	YELT03N101JT	Coil	
Accessories			
PRINTINGS			
	YEFM284003	Operating (English)	Instructions
	YEFM284004	Operating (German)	Instructions
	YEFM284005	Operating (French)	Instructions
	YEFM284006	Operating (Italian)	Instructions

Ref. No.	Part No.	Part Name & Description	Remarks
	YEFM284007	Operating Instructions (Spanish)	
	YEFM284008	Operating Instructions (Netherlandic)	
	YEFM284009	Operating Instructions (Swedish)	
	YEFM284010	Operating Instructions (Polish)	
	YEFM292919	Installation Instructions-A	
	YEFM292929	Installation Instructions-B	
INSTALLATION PARTS			
	YEP0FZ3264	Screw Kit	
	YEAJ02874	Power Cord	
	YEFA131646	Removable Face Plate Case	
	YEF0C05595	Trim Plate	A, B, C
	YEF0C05593	Trim Plate	D, E, F
	YEF0C05594	Trim Plate	G
	YEFX0215873	Mounting Collar	
Mechanical Parts			
MISCELLANEOUS			
ANT51	YGAA10082	Antenna Receptacle	
AT1	YEATSD00405	Terminal (CD Servo)	
AT1	K4ZZ01000048	Terminal (Main)	
AT2	K4ZZ01000048	Terminal	
AT3	K4ZZ01000048	Terminal	
HP1	YEAT03324	Terminal	A, B, C
HP2	YEAT03324	Terminal	A, B, C
1	YEFX0216054	Bracket, Deck	
2	YEFX0216132	Bracket, L	
3	YEP0PT924229	PCB w/Component, CD Servo PCB	RTL
4	YEFM031400	Laser Seal	
5	YEFM031399	Laser Seal	
7	YEFA08576	Rear Plate	A, B, C
7	YEFA08575	Rear Plate	D, E, F, G
8	YEFX0215885	Bracket, IC703	
9	YEFX007380	Cord Clamper	A, B, C
10	YEFR04187	Lead Cap	A, B, C
11	YEFA031817A	Upper Cover	
12	YEF011092A	Heat Sink	
13	YEFX0216060	Bracket, 4P RCA	A, B, C
13	YEFX0216059	Bracket, 2P RCA	D, E, F, G
15	YEFA05851	Bottom Cover	
16	YEFV012227	Insulator	
17	YEF0C027800	Escutcheon Ass'y, Detachable	
18	YEF07516	Knob, VOL.	
19	YEF0137433	Button, BAND/SRC	
20	YEF0137435	Button, TUNE/TRACK	
21	YEF0137434	Button, EJECT/DISP	
22	YEF0137431	Button, RELEASE	
23	YEF0137432	Button, PRESET	
24	YEFX0052692	Spring	
25	YEFA131718	Cover, Detachable	
26	YEFX0216055	Bracket, LCD	
27	YEFV021921	Optical Shade	
28	YEFX0012300	Transparent Plate	
29	YEFJ012190	Ornament Plate	A
29	YEFJ012189	Ornament Plate	B
29	YEFJ012188	Ornament Plate	C
29	YEFJ012186	Ornament Plate	D
29	YEFJ012185	Ornament Plate	E
29	YEFJ012184	Ornament Plate	F
29	YEFJ012187	Ornament Plate	G
30	YEP0PT9243Y9	PCB w/Component, Display PCB	RTL, A
30	YEP0PT9243X9	PCB w/Component, Display PCB	RTL, B
30	YEP0PT9243W9	PCB w/Component, Display PCB	RTL, C
30	YEP0PT9243V9	PCB w/Component, Display PCB	RTL, D
30	YEP0PT9243U9	PCB w/Component, Display PCB	RTL, E

Ref. No.	Part No.	Part Name & Description	Remarks
30	YEP0PT9243T9	PCB w/Component, Display PCB	RTL, F
30	YEP0PT9243S9	PCB w/Component, Display PCB	RTL, G
31	YEFV021934	Optical Shade	
32	YEFV012237	Insulator	
33	YEFX0012301	Transparent Plate	
34	YEFJ012192	Ornament Plate	
35	YEFJ012199	Ornament Plate	
36	YEFX0052572	Spring	
37	YGFE134716	Push Lever	
38	YEFX0052175	Spring	
39	YEF011113	Pad	
40	YEFX0052176	Spring	
41	YEFA09746B	Side Plate	
42	YEFX0213945B	Bracket, IC271	
43	YEF02302	Felt	
44	YEFX0214168	Bracket, IC702/IC705	
45	YEFA07630	Front Plate	
46	YGFX9991689A	Release Hook	
47	YEP0PT6925Y9	PCB w/Component, Main PCB	RTL, A
47	YEP0PT6925X9	PCB w/Component, Main PCB	RTL, B
47	YEP0PT6925W9	PCB w/Component, Main PCB	RTL, C
47	YEP0PT6925V9	PCB w/Component, Main PCB	RTL, D
47	YEP0PT6925U9	PCB w/Component, Main PCB	RTL, E
47	YEP0PT6925T9	PCB w/Component, Main PCB	RTL, F
47	YEP0PT6925S9	PCB w/Component, Main PCB	RTL, G
48	YEFX0216133	Bracket, R	
49	YEF0C027809	Escutcheon Ass'y, Unit	
50	YEP0FX5008	Removable Face Plate Unit	RTL, A
50	YEP0FX5007	Removable Face Plate Unit	RTL, B
50	YEP0FX5006	Removable Face Plate Unit	RTL, C
50	YEP0FX5004	Removable Face Plate Unit	RTL, D
50	YEP0FX5003	Removable Face Plate Unit	RTL, E
50	YEP0FX5002	Removable Face Plate Unit	RTL, F
50	YEP0FX5005	Removable Face Plate Unit	RTL, G
60	YEJS06093	Screw, 3mm x 6mm	
61	YEJS06306	Screw, 2mm x 3mm	
62	YEJS06017	Screw, 3mm x 8mm	
63	YEJT03009	Screw, 3mm x 8mm	
64	YEJT03327	Screw, 2mm x 5mm	
65	YGJT03156	Screw, 2.6mm x 5mm	
66	XTB3+6FFX	Screw, 3mm x 6mm	
67	XTB26+5FFZ	Screw, 2.6mm x 5mm	
68	XTB26+8GFX	Screw, 2.6mm x 8mm	
69	XTN2+8GFZ	Screw, 2mm x 8mm	
70	XTN2+4GFX	Screw, 2mm x 4mm	



# 13 EXPLODED VIEW (Unit)

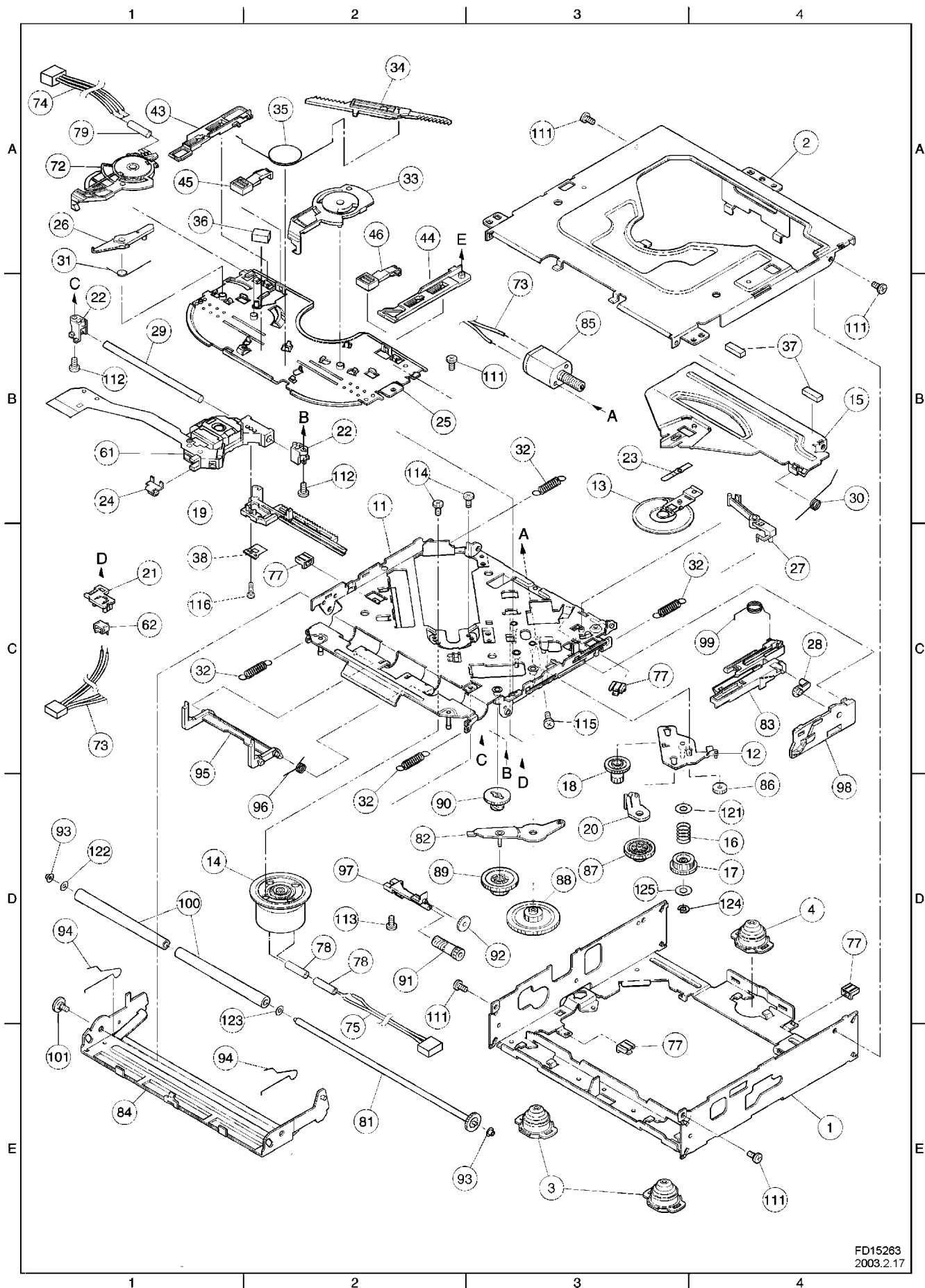


# 14 CD PLAYER MECHANICAL PARTS LIST

Ref. No.	Part No.	Part Name & Description	Remarks
1	YERFA01001	Frame M	
2	YERFA01002	Top cover M	
3	YERFS04003	Damper F	
4	YERFS04004	Damper R	
11	YERFA01005	Chassis Rivet S Ass'y (M)	
12	YERFX046001	Change Plate Rivet Ass'y (M)	
13	YERFX007001	Clamper Ass'y	
14	YERAK0001	Spindle Motor (M) Ass'y	
15	YERFX046002	Clamper Arm M	
16	YERFX005001	Change Gear Spring	
17	YERFX03001	Change Gear 2	
18	YERFX03002	Feed Gear	
19	YERFX03003	Feed Rack M	
20	YERFX046003	Change Lock Lever M	
21	YERFW04001	Feed SW Holder (,M)	
22	YERFW04002	PU Shaft Holder(,M)	
23	YERFX005002	Clamper Sub Spring	
24	YERFW04003	FD Sub Holder M	
25	YERFA01006	Top Plate S	
26	YERFX046004	Select Lock Arm	
27	YERFX046005	Trigger Arm M	
28	YERFX046006	Slide Hook	
29	YERFW01001	PU Shaft M	
30	YERFX005003	Clamper Arm Spring M	
31	YERFX005004	Select Lock Arm Spring	
32	YERFX005013	Suspension Spring MS	
33	YERFX046007	Select Arm R	
34	YERFX03004	Link Plate	
35	YERFX005006	Link Plate Spring	
36	YERFS01001	Cushion F	
37	YERFS01002	Cushion R	
38	YERFX005014	Feed SPR Plate M	
43	YERFX046008	Select Plate L	
44	YERFX046009	Select Plate R	
45	YERFX046010	Select Piece L	
46	YERFX046011	Select Piece R	
61	YERFD13001	Pick Up RD-DAP005-TN	
62	YERAS0001	DET SW ESE 22MH55	
72	YERAS0002	Mode SW	
73	YERAE02001	LD Wire Ass'y M	
74	YERAE02002	SW Wire Ass'y M	
75	YERAE02003	SP Wire Ass'y M	
77	YERFX999001	Wire Clamper M	
78	YESFX024021	Wire Tube SPM	
79	YESFX024022	Wire Tube MSW	
81	YERFX03005	Roller Shaft Ass'y	
82	YERFX046012	Loading Gear Plate Rivet Ass'y	
83	YERFX046013	Loading Plate Ass'y	
84	YERFX046014	Lock Arm Rivet Ass'y	
85	YERAK0002	Loading/Feed Motor Ass'y(MB)	
86	YERFX03006	Loading Gear 1	
87	YERFX03007	Loading Gear 2	
88	YERFX03008	Loading Gear 3	
89	YERFX03009	Loading Gear 4	
90	YERFX03010	Loading Gear 5	
91	YERFX03011	Loading Gear 6	
92	YERFX03012	Loading Gear 7	
93	YERFW04004	Roller Guide	
94	YERFX005007	Roller Guide Spring	
95	YERFX046015	Disc Stopper Arm	
96	YERFX005008	Disc Stop Arm Spring	
97	YERFX046016	LD Gear Bracket	
98	YESFX046133	L Slide Plate	
99	YERFX005009	Loading Plate Spring	
100	YESFX046134	LDG Roller	

Ref. No.	Part No.	Part Name & Description	Remarks
101	YERJS01001	PK Collar Screw A	
111	YERJT01001	Tapping Screw 2x3	
112	YERJT01002	Tapping Screw 2x4	
113	YERJT03117	Tapping Bind Screw 2x4	
114	YERJS01002	Camera Screw 1.7x1.8	
115	YERJS01003	Camera Screw 2x2	
116	YERJS01004	Camera Tapping Screw P3 M1.7x5	
121	YERJW01001	PW 3.5x8x0.3	
122	YERJW01002	HLW 1.85x5x0.13	
123	YERJW01003	Lumilar Washer 3.1x6x0.1	
124	YERJE01028	E Ring S 1.5	
125	YERJW01005	PW 2.1x4x0.13	

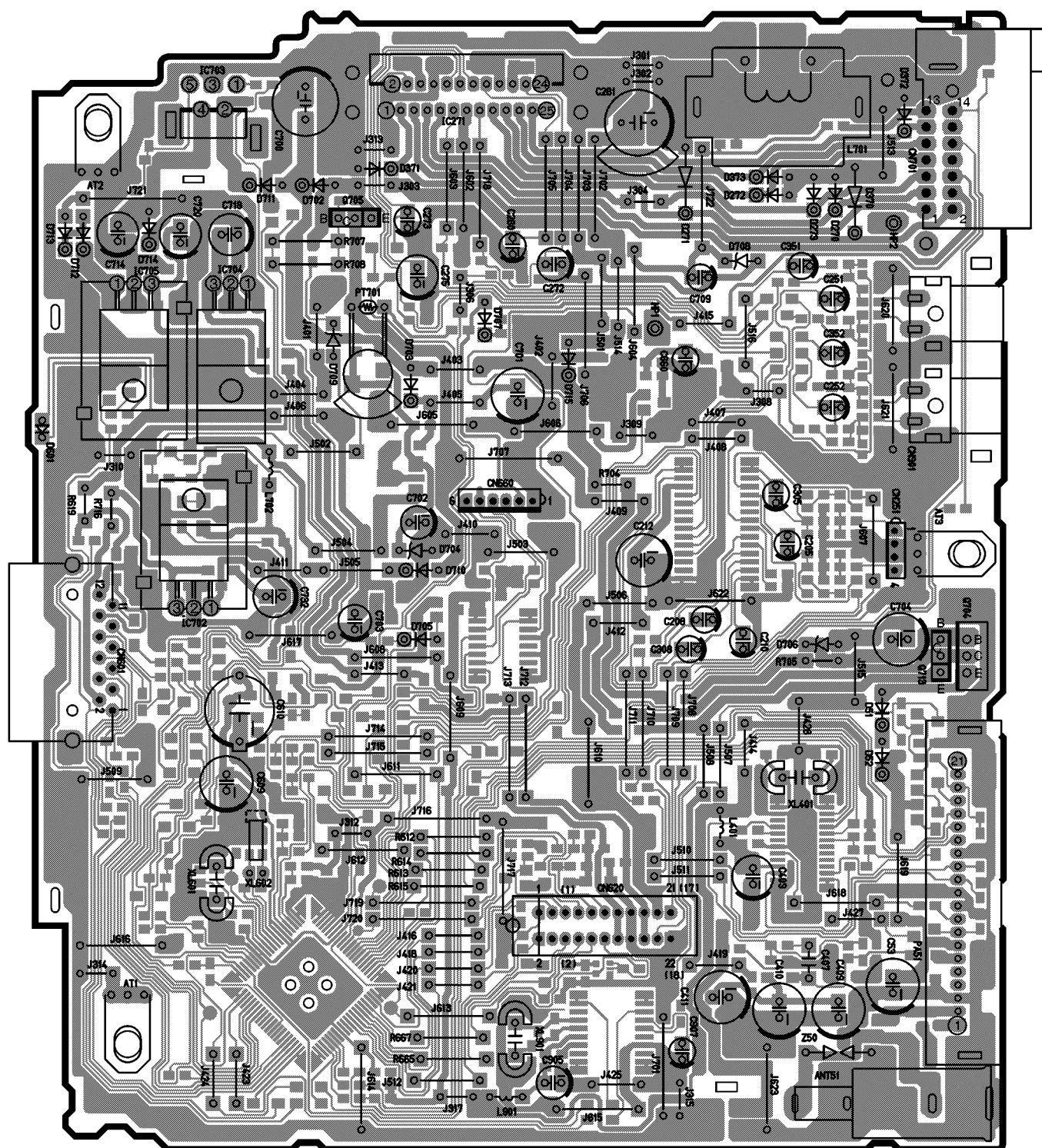
# 15 EXPLODED VIEW (CD Deck)



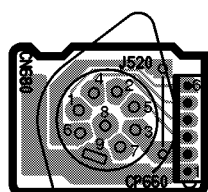
FD15263  
2003.2.17

# 16 WIRING DIAGRAM

## 16.1. Main Block (Top View)



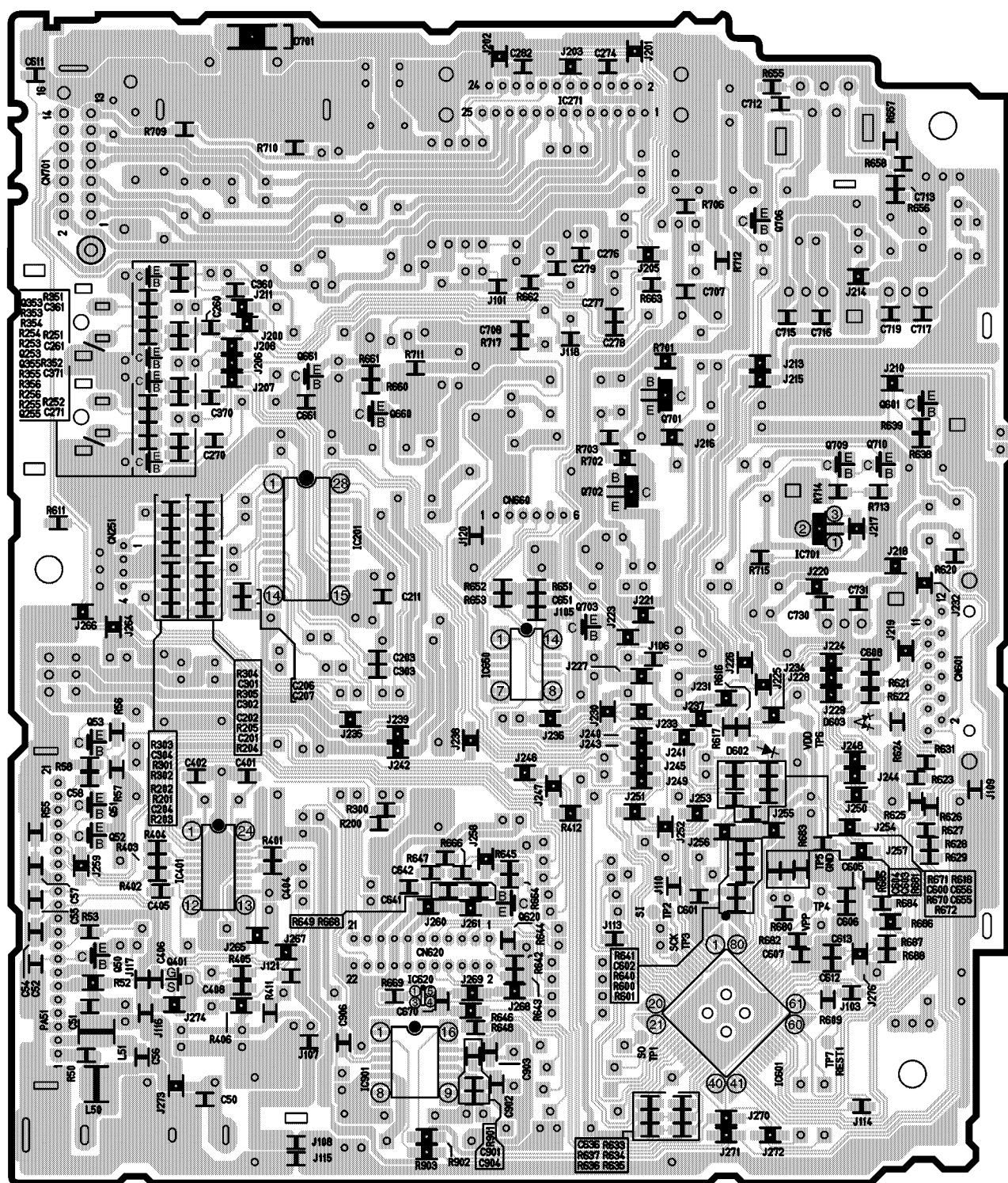
[E-6925a] [Top View]



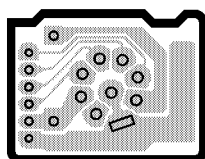
[E-6925b]  
[Top View]

CQ-RDP153/143/133/123/113/103/003N MAIN P.C.B.

## 16.2. Main Block (Bottom View)



[E-6925a] [Bottom View]

[E-6925b]  
[Bottom View]

CQ-RDP153/143/133/123/113/103/003N MAIN P.C.B



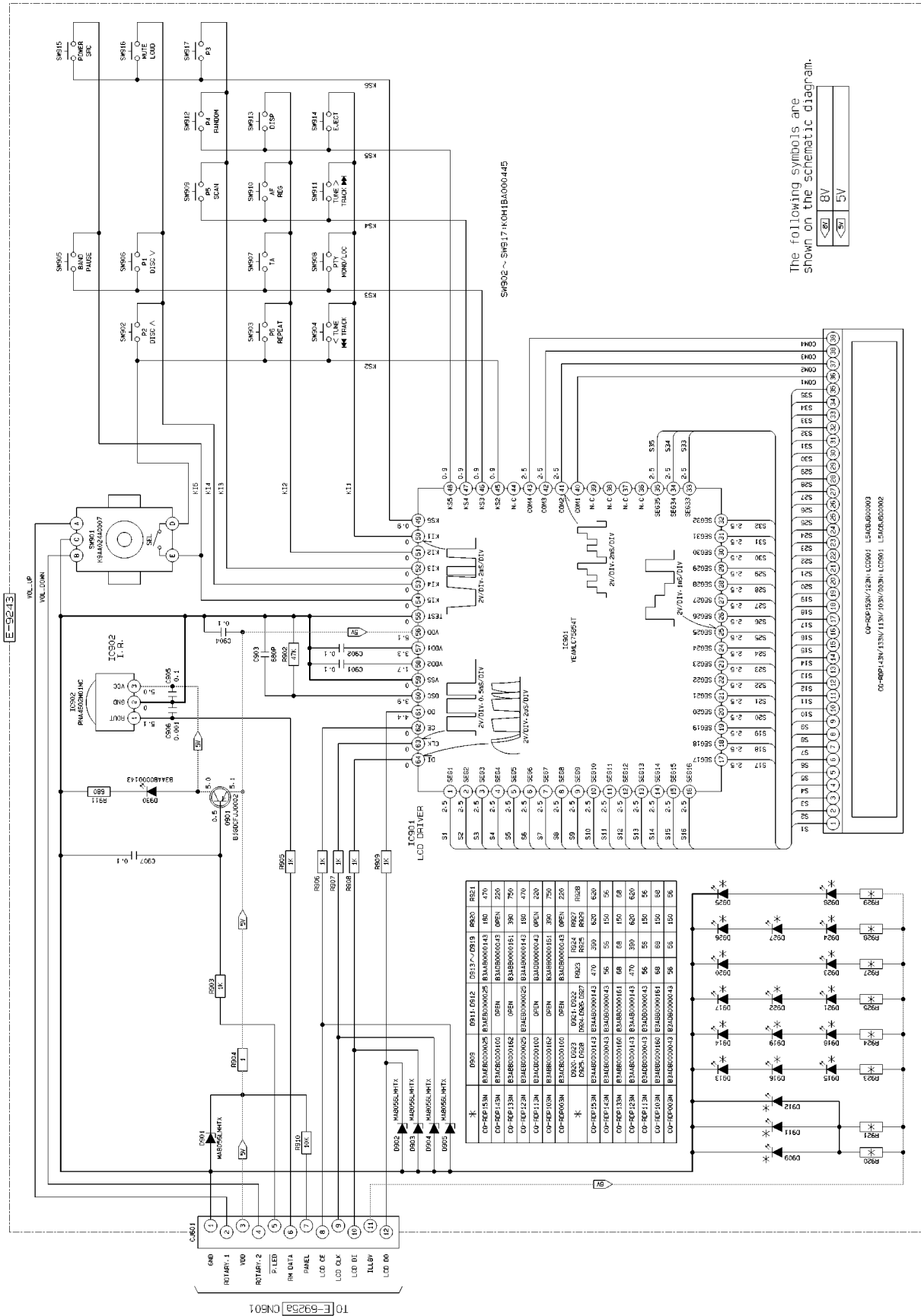




23

# 17 SCHEMATIC DIAGRAM -1

## 17.1. Display Block





# 18 SCHEMATIC DIAGRAM -2

## 18.1. Main Block

