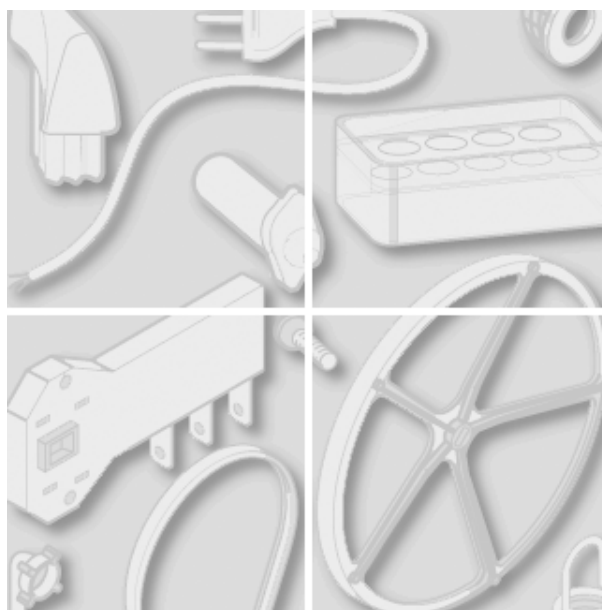


Merloni Elettrodomestici



Model type:
WE8XEX

Commercial code:
24774

General notes

Technical Documentation guidelines

You can find herewith some generic information to simplify consulting of technical documentation:

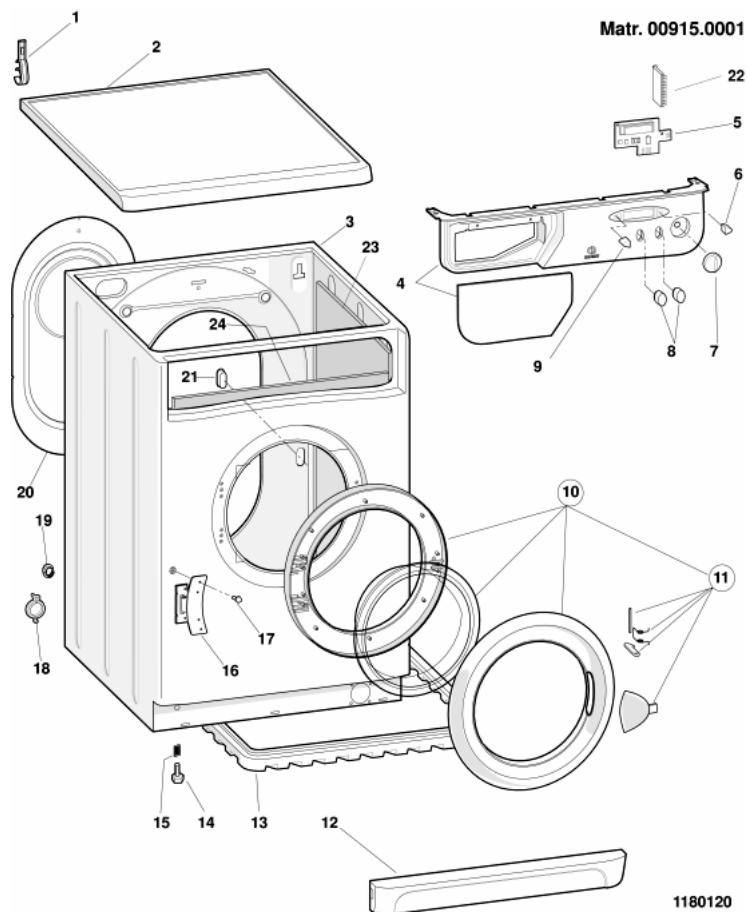
1. Models of same range share the same exploded views, which report the richest set of spare parts: generally, a model does not necessarily have a related spare part for each particular shown on exploded views.
2. Some spare parts can not be represented directly on the exploded views (instruction booklets, specific kit, etc...). You can find those codes in the spare parts list with the same reference of particular where spares are installed or with references 099, 999. Instruction booklets, once managed, appear with 000 reference.
3. On the higher right site of each exploded view there is a serial number which indicates the beginning of the production of certain range: some models might have more than an exploded view for a given category, each distinguished by a different serial no. and linked to another spare parts list. In this case, serial no. is required to supply the right spare part code. Exploded view to be considered is the one with a more recent serial no. but previous than the one of the model that needs assistance.
4. Exploded views might require further updates even after publishing. Addition of new spares will go on following the already existing numeration references. Revision number of an exploded view is shown into last four digits of serial number into upper right hand corner.
5. The spare parts list associated to an exploded view shows related codes of spares managed for a certain model; for each spare part other informations are available:

REF: reference no of spare into a table; SUBSTITUTE: list of spare(s) which can replace a code but that keeps same functional characteristics

INDUSTRIAL CODE: list of variables of a model (shown into model label) where such spare is used; NOTICE: code of information(s) to refer to complete technical intervention, track for changes or to find correct spare part code.
6. Some notices, into a same section are generic therefore cannot be directly linked to a spare part. In order to assist a model in the best way as possible, it is helpful to pay attention to all notices and constantly verify documentation updates
7. Technical documentation cover shows model name and its commercial codes

pdf_tavola_title_ENG

cod. 1180120



Spare parts list

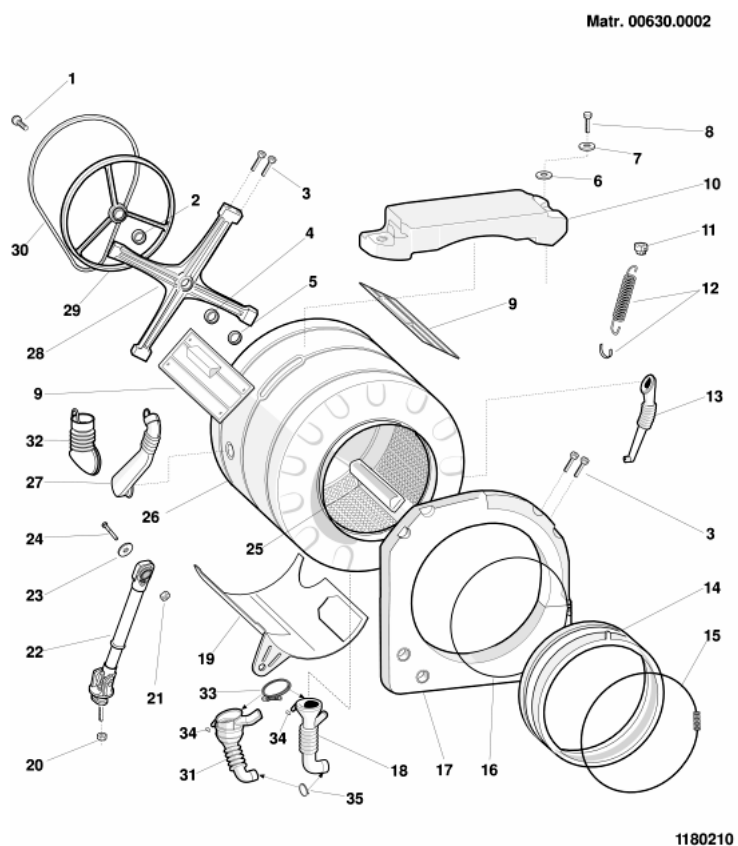
Spare parts list cod. 1180120

Ref.	Code	Substitute	Industrial code	Description	Notice
000	C00080932			user instructions booklet gb-f-i-cz-gr	
000	C00080933			user instructions booklet sv-fi-dk-no-d	
001	C00046667			wiring stop	
001	C00064550			dain hose holder	
002	C00075314			top - white	
003	C00075315	1 C00090578		cabinet	n1040230
004	C00080931			control panel & handle	
005	C00076708	1 C00084331,1 C00084409		display card sw 1.09 (less eeprom)	n1040066,n1040203,n1040181,n1040181,n1040078,n10
005	C00081342	1 C00084331,1 C00084409		display card sw 1.09 less eeprom(mat.10201	n1040066,n1040203,n1040181,n1040181,n1040078,n10
005	C00084330	1 C00084759		display card sw 1.20 amp (less eeprom)	n1040066,n1040203,n1040181,n1040181,n1040078,n10
005	C00084409			display card sw 1.20 old type connector	n1040066,n1040203,n1040181,n1040181,n1040078,n10
005	C00084759			display card sw 1.77 (less eeprom) we	n1040066,n1040203,n1040181,n1040181,n1040078,n10
006	C00076546			pushbutton white display right	
007	C00075318			components knob white 27	
008	C00076544			pushbutton white	
009	C00076547			pushbutton white display left	
010	C00076719			door frame assy	
011	C00076583			door handle kit	
012	C00075324			plinth white	
014	C00050320			foot - rear m 8 h = 41 mm	
015	C00059869			spring for foot d =11 mm h = 21 mm	
016	C00075325			hinge door	
017	C00002497			nut m4x3,2x7	

017	C00019846		bolt t 1/2 t m4x12	
017	C00065185		bolt m4,5 x 11	
018	C00046666		collar for drain hose	
019	C00003144		blanking plug 11mm	
019	C00065871		blanking plug	
020	C00064501	1 C00099313	rear cover - white	
021	C00064899		blanking plate-rear(test plug)	n1040208
021	C00084817		blanking plate-rear(test plug)	n1040208
022	C00080930		eprom display we8xex 80247740001 10208	n1040066
099	C00065728	1 C00077411	rubber	
099	C00066091	1 C00077411	washer packing	
099	C00066269	1 C00077411	bolt a/mas m6 x100 zc sp packing	
099	C00074922	1 C00077411	spacer l= 79.5	

pdf_tavola_title_ENG

cod. 1180210



Spare parts list

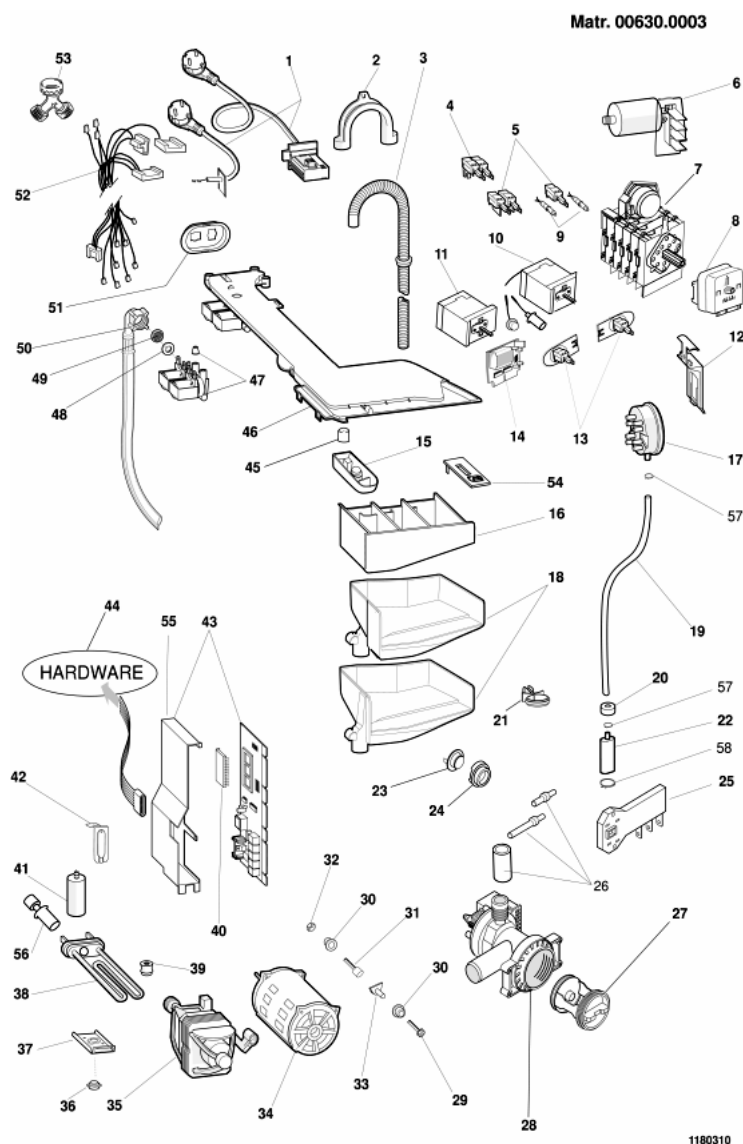
Spare parts list cod. 1180210

Ref.	Code	Substitute	Industrial code	Description	Notice
001	C00064786			bolt m8x20 tefl	
002	C00002591			bearing 20x47x14	
003	C00051737			torx m8 x 27 dri-loc screw	
003	C00064785			bolt m8x22 tb6lt	
004	C00002590			bearing 17x40x12 6203-2z skf	
005	C00042890			sealing ring 600 rpm	
006	C00075326	1 C00085574		washer m8.5x35x3	
007	C00055018			washer m8	
008	C00014342			bolt m8x75 te	
009	C00064517			tank cradle channel-top left right wm	
010	C00064548			upper counterweight 11 kg	
011	C00064515			anchorage pad - suspension spring	
012	C00064502			suspension spring - tank	
013	C00064536	1 C00086430		hose - detergent recovery	
014	C00064545			door bellows seal no deterg. recov hos	
015	C00064546			clamping ring - bellows seal front	
016	C00064547			bellows clamp (tank front)	
017	C00064516	1 C00092178		front counterweight	
018	C00064531			hose tank to filter	
019	C00064518	1 C00093848		cradle outer- set	n1040286
021	C00030680	1 C00040130		nut m 10	n1040286
022	C00064503			shock absorber 80 n	n1040230,n1040286
022	C00086515			shock absorber 80 n (11105) 10,1mm	n1040230,n1040286

024	C00030446		bolt m10 x 45 zntr	n1040286
025	C00064789		wash paddles (extractable) 46	
026	C00064513	1 C00093772,1 C00094272	outer- set	
027	C00064528		hose dispenser to tank	
028	C00064514		bearing spider assembly	
029	C00064527		drum pulley d=280 mm h=17mm	
030	C00066521		belt l=1181 mm h8	
099	C00033026		amblygon grease ta 100 gr.	

pdf_tavola_title_ENG

cod. 1180310



Spare parts list

Spare parts list cod. 1180310

Ref.	Code	Substitute	Industrial code	Description	Notice
001	C00064563			supply cable 3x1 schuko 1,5 m	
002	C00019902			plastic -u- to make drain hose hook	
003	C00027466			drain hose - to sink l=1860mm	
005	C00058465			push button switch na+na on-off	n1040246
005	C00063971			push button switch s.sa na (on-off)	n1040246
005	C00076577			push button switch na start/reset	n1040246
006	C00064559			radio interference suppressor	
012	C00064537			support - pressure switch	
013	C00076707			potentiometer 16 pos.	
015	C00075459			additive container	
016	C00075352	1 C00097732		soap dispenser drawer	
017	C00064558			pressure switch 1 l. + antioverflow	n1040197
017	C00075337			pressure switch 1 l. + antioverflow	n1040197
018	C00075351			dispenser body	
019	C00041785			air trap hose 540 mm.	
020	C00019755			anti-vibration bush (foam)	
021	C00064530			clip-pressure switch tube	
022	C00064532	1 C00092173		air trap	
023	C00053573			temperature sensor ("control") - white	
024	C00014917			grommet - thermostat	
025	C00065185			bolt m4,5 x 11	
025	C00066291	1 C00059539		door interlock	
027	C00045023			filter handle	

027	C00045025		filter seal	
027	C00045027		filter element kit	
028	C00064950		self cleaning pump 240v./50hz.	
029	C00074152		bolt m6x30	
029	C00084029		bolt motor m6x34	
030	C00074151		rubber bush - motor mount	
030	C00074153		spacer motor support l= 187 mm	
032	C00002407		washer 6,4x13x1,5	
032	C00040932		self locking nut m6	
035	C00043430		tacho generator black for ice motor	
035	C00047317		brush for motor (ice)..940n2101/940n1i01	
035	C00064552	1 C00056962	motor collector 850-1000 rpm	
038	C00064556		heating element+thermal cut-out 1700w/230v	
039	C00058523		pillar retainer-heating element	
040	C00080929		eprom we8xex sw 28247740010	n1040066,n1040078,n1040061
043	C00077471	1 C00084331,1 C00084409	module (less eeprom) sw 1.32	n1040061,n1040160,n1040203,n1040066,n1040078,n10
043	C00084331	1 C00093153	module (less eeprom) sw 2.01	n1040061,n1040160,n1040203,n1040066,n1040078,n10
044	C00066055	1 C00077454	housing seriele	n1040066,n1040211,n1040066
044	C00066292		insulated tweezers	n1040066,n1040211,n1040066
044	C00084943	1 C00099862	serial cable lb2000 - pc	n1040066,n1040211,n1040066
045	C00046157		stopper detergent container	
046	C00075458		hopper cover 1 ev	
047	C00064534		seal - electrovale/dispenser	
047	C00066518		2-way electrovalve 1e-2u 7 lt.	
048	C00005572		sealing washer-mains inlet hose	
049	C00005781		inlet hose filter	
050	C00003070		mains inlet hose cold 25c 10bar 1500 mm	
051	C00064946		electrovalve support 1 ev	
052	C00076576		wiring	
054	C00047069		additive cover	

Notices

n1040061

Trouble-shooting.

Intervention procedure on 2000 washing machines

1. Reading the error code

The fault on the appliance is signalled via:

1. the continuous rotation of the selector knob
2. the action, for the first 4', of the electrovalve and the drain pump
3. the door becomes unlocked
4. the led flashes:

the number of flashes indicates the fault code; the code should be read as follows:

- each fast flash (2/3 flashes of the led very close together) represents one code value
- the fault code is evaluated by counting the number of flashes occurring at 3/4" intervals from one another
- stop counting when the washing machine waits the equivalent of approximately 8/9" between flashes
- the procedure is repeated by the appliance cyclically

E.g.: F03

(FIGURE NT 00)

2. Autotest

Should the washing machine not be signalling an error, you can check it using a serial key and using a particular autotest cycle, which is to be activated as follows:

1. bring the washing machine to reset position (coloured ball) for at least 5" and wait until the led flashes on reset mode
2. insert the hardware key into the serial outlet
3. position the switch situated on the key in TEST position
4. wait for the door to lock and for the selector to start turning
5. position the switch situated on the key in PC position

the appliance will carry out the following cycle:

- selector moves on up to position 0 (12h if the appliance has a delay, programme 1 if it has no delay)
- loads the wash electrovalve for approx. 10"
- loads the pre-wash electrovalve for approx. 10"
- loads the wash electrovalve and pre-wash electrovalve at the same time until the pressure switch is on full
- heats up to 30° and moves the motor in both directions
- selector moves on for 9 notches
- drains and spins
- the selector knob stops on one of the reset positions
- STOP

The test cycle can be repeated as many times as you wish following the same procedures

The test cycle can be interrupted by positioning the selector knob on one of the reset positions.

3. Intervention in the event of a Fault

In the event of a fault, the procedure to go by is as follows:

F01: Triac Short circuit

Overhaul CNE

Replace Card

F02: Blocked Motor, Short-circuited/Open Tachometry

Overhaul CNE

Overhaul Motor connector

Control CNE Continuity/Motor Connector

Control Motor Windings

Control Tachometry Windings

Replace Card

F03: Open/Short-Circuited NTC Found

Overhaul CNA

Control NTC Wiring

Control CNA/NTC Wiring Continuity

Replace NTC

Replace Card

F04: Overflow and Pressure Switch Empty found at the same time (Pressure Switch stuck on Empty)

Overhaul CN1

Overhaul Pressure Switch Contacts

Control CN1/Pressure Switch Continuity

Replace Pressure Switch

Replace Card

F05: Blocked Pump or Pressure Switch stuck on Empty Found

Overhaul CNF (pump connector)

Overhaul Pump Connector

Control Pump Filter

Control Pump Windings

Change Pump

Replace Card

F06: Selector Error (a part no. cannot be found)

Overhaul CND (selector connector)

Overhaul Selector Connector

Control Selector/CND Continuity

Control Selector Motor

Replace Selector

Replace Card

F07: Resistance Relay Stuck

Overhaul CN1

Overhaul CN1

Overhaul Resistance Connection

Replace Card

Overhaul Resistance Connection

Replace Card

F08: Resistance Missing or Pressure Switch stuck on Full Found

Overhaul CN1

Overhaul Resistance Connection

Overhaul Pressure Switch Connection

Replace Resistance

Replace Pressure Switch

Replace Card

F09: Machine Setup Error Found

Control Microprocessor Version

Ask for EEPROM Spare Part indicating Microprocessor version

F10: Pressure Switch Empty and Full or neither Empty nor Full Pressure Switch Found

Overhaul CN1

Overhaul Pressure Switch Wiring

Control CN1/Pressure Switch Continuity

Replace Pressure Switch

Replace Card

F11: Pump Feedback Missing

Overhaul CN1

Overhaul CNF

Overhaul Pump Connector

Overhaul Pressure Switch Connector

Control Pump Windings

Replace Pump

Replace Card

F12 SPECIFIC FOR LVB2000 INDESIT EVOLUTION / DIALOGIC.

F12: Lack of Display card-Main Card Communication

1. Check the effectiveness of contacts on CNC Connector Card
2. Overhaul 8-way connector on Display card
3. Check continuity of CNC-CN 8 way connector
4. Replace Main Card
5. Replace Display Card

F13: NTC wiring harness disconnected from the dryer system

1. Check the efficiency of the terminals on the CNA connector board
2. Check NTC wiring harness
3. Check the wiring harness continuity of the CNA / NTC connectors
4. Replace NTC
5. Replace terminal board

F14: Dryer connector open or not connected

1. Check the efficiency of the terminals on the CNI connector board
2. Overhaul CN1

3. Overhaul connector connection
4. Replace the board.Merloni Elettrodomestici

F15: Dryer connector is always active

1. Check the efficiency of the terminals on the CNI connector board
2. Overhaul connector connection
3. Overhaul the pressure sensor connection
4. Replace the connector
5. Replace pressure sensor
6. Replace the board

F16: Non-functioning basket block

1. Go over connector card CNC
2. Go over connector basket block
3. Control Continuity of cabling CNC / basket block and basket block supply
4. Replace basket block
5. Replace card

N.B.From Fault F01 to fault F11

These are shown by LEDs in stand by/on in LVB2000 machines Ariston/Indesit.

From fault F01 to fault F12

These are shown in a display located on the instrument panel of LVB2000 machines

Evolution Indesit.

From fault F01 to fault F15

Are those that are indicated according to the version via LED stand by/on or

display positioned on the Wash Dry machine Ariston/Indesit panel.

4. Replacing the card

Should you have to replace the card:

- retrieve the EEPROM from the old card
- reassemble the EEPROM onto the new replacement card (without EEPROM)

In the event, and only in this case:

- an F02 has been detected
- the above-mentioned checks have been carried out and no problems have been detected on the wiring or to the motor
- the card fitted onto the washing machine is a 12 or 20 version (the version is indicated by a label on the module-containing box with SW20 or SW12)

you should:

- fit on a new card (version 32 or above)
- fit on an updated EEPROM to request from the assistance service centre, stating the code (e.g. 80xxxxx0000 or 46xxxxx0000), the serial number and the washing machine model.

n1040066

LB2000 Hardware (Serial Spanner and Pliers)

As of 05.04.2000, the following Spare Parts are available from the Warehouse:

Part no.066055 - Serial spanner for LVB2000 autotest. It has not to be linked to PC. (substituted with 077454);

Part no. 077454 - Serial spanner for LVB2000-PC White (substituted with 084566);

Part no. 084566 - Serial spanner for LB2000/EVOI -PC BIANCA (substituted with 095669 LB2000/EVOI, EVOII - PC).

Part no.066292 - Extractor pliers for integrated circuits.

For instructions on use, please refer to the relative Service Manual.

n1040078

WARNING: Remove the eeprom

Remove the eeprom with pliers part no. 066292 from the faulty module and insert it on the new module / display module, otherwise the machine will not function.

L'EPROM contains the software that characterizes the model, therefore each apparatus should have his own specific eeprom(see the list spare parts).

n1040151

Display

Display

All the options available are displayed on the right-hand side.

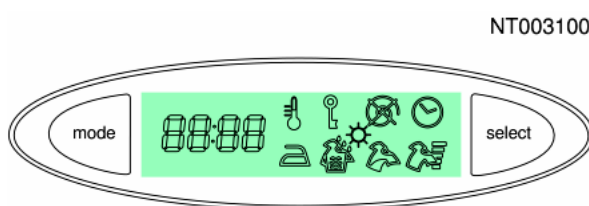
Use the mode button to select the desired option, and the relative symbol will begin flashing.

On the left-hand side, the value or the status (On-Off) of the selected option is displayed, and you can modify it using the select button.

To access the subsequent option, press the mode button, otherwise press button B to start the wash cycle.

All the options available are listed below.

Only options relevant to the selected programme will be displayed.



n1040160

Form Code 077471 Evolution range.

The form code 077471 must definitely be used on all the Washing machines in the Evolution range (WE).

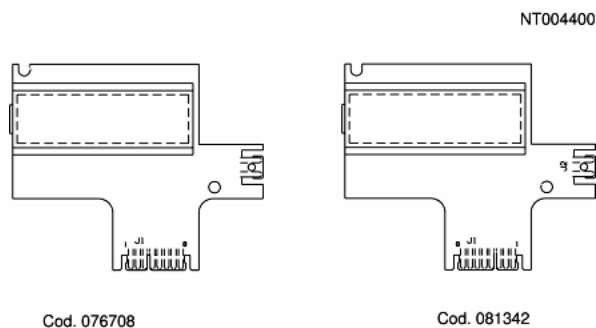
To avoid the use of the form code 066054 for models in the Evolution range, the code has been eliminated from the list of spare parts leaving only the code 077471.

n1040181

Modified display connector polarity.

From the registration no. 10201.0001 on the Indesit Washing machines in the Evolution range due to production requirements the polarity has been modified on the connector of the display (see enclosed figure).

The new display code is 081342 may not be used on the pre-modification apparatus', therefore the 076708 will continue to be normally handled.



n1040197

Pressure sensor substituted

From the registration no. 10514.0001 on models involved by the present Notification the pressure sensor 1st level plus anti-spill code 075337 has been substituted with 064558 always at one level + anti-spill but with diverse settings.

n1040203

New display card and new power modulus EVOLUTION

From registration number 10620.0001, it is used the following components on every washing-machine belonging to Evolution series:

Cod. 084330 - Display card SW. 1.18 - 1.20 with a AMP connector;

Cod. 084331 - Electronic power modulus SW 1.72.

The new components are not interchangeable with the pre-modified ones, which will be used till to their sellout.

At the end of the sellout of display cards cod. 076708, cod. 081342 and of the power modulus cod. 077471, the following procedures will be executed on equipments Evolution produced before 20th June 2001:

1) In case of substituting of display card 076708 or 081342: use of the new display card with a pre-modified connector cod. 084409 and absolute use of the new power card cod. 084331.

2) In case of substituting of the power modulus cod. 077471: use of the new power modulus cod. 084331 and absolute use of the display card but with a modified connector cod. 084409.

n1040208

New hardware testing plug LB2000 Teverola.

From the registration number 10827.0001 on all washing machines LB2000 with program selector, produced in the factory in Teverola, a new hardware testing plug cod. 084817 is used.

The new plug is not interchangeable with the pre-modified one cod. 064899; so both have to be managed. In case of substitution of the piece of furniture on an equipment, preceding the registration number 10827.0001, it will be necessary to put on the suitable plug.

This modification of the registration number 10820.0001 is extended to all washing machines and wash-driers with a programs' selector produced in the factory in Comunanza.

n1040211

Serial cable to connect the hardware key with the PC.

To connect the hardware key: LB2000 with the personal computer, you must use

a serial cable, pin to pin 9 pin F/F, to guarantee the availability, it was

decided to manage it as a spare part.

The SAT code of the cable (length 2m) is 084943.

n1040230

Modified shock absorber bracket - Comunanza plant

From the registration no. 11107.0001, the washing machines and Washer-Dryers produced in the Comunanza factory Plant, have used modified shock absorbers with the bracket that fixes onto the cabinet.

The codes for the new shock absorbers are:

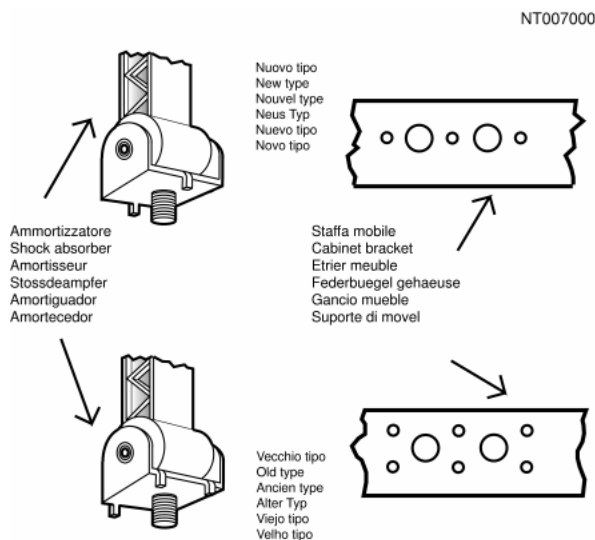
Code 086372 - Shock absorber 120 N (11105);

Code 086515 - Shock absorber 80 N (11105);

The modification also involved the cabinets in the fixing area that for the shock absorbers represent a different type of slotting (see enclosed figure).

To avoid the proliferation of the codes, the modified cabinets are handled with the same SAT code as the pre-modification, when replacing the cabinet you will need to check the registration number of the appliance.

In order to perform a proper task the intervention of the cabinet replacement it is recommended, that at least in the initial phase, to keep both the combination of shock absorbers in stock. The shock absorbers code 066184 and 064503 will continue to be normally handled.



n1040236

DISPLAY CARD WITH NEW DISPLAY

From the registration number 11203.0001 on all the Washing Machines and Washer-Driers of the Evolution Range, a new card is used with a new display Code SAT 084759.

The new display card can be utilised instead of the pre-modified Code 084330, but not vice versa.

The card 084330 will be administered until stocks last.

n1040061

Trouble-shooting.

Intervention procedure on 2000 washing machines

1. Reading the error code

The fault on the appliance is signalled via:

1. the continuous rotation of the selector knob
2. the action, for the first 4', of the electrovalve and the drain pump
3. the door becomes unlocked
4. the led flashes:

the number of flashes indicates the fault code; the code should be read as follows:

- each fast flash (2/3 flashes of the led very close together) represents one code value
- the fault code is evaluated by counting the number of flashes occurring at 3/4" intervals from one another
- stop counting when the washing machine waits the equivalent of approximately 8/9" between flashes
- the procedure is repeated by the appliance cyclically

E.g.: F03

(FIGURE NT 00)

2. Autotest

Should the washing machine not be signalling an error, you can check it using a serial key and using a particular autotest cycle, which is to be activated as follows:

1. bring the washing machine to reset position (coloured ball) for at least 5" and wait until the led flashes on reset mode
2. insert the hardware key into the serial outlet
3. position the switch situated on the key in TEST position
4. wait for the door to lock and for the selector to start turning
5. position the switch situated on the key in PC position

the appliance will carry out the following cycle:

- selector moves on up to position 0 (12h if the appliance has a delay, programme 1 if it has no delay)
- loads the wash electrovalve for approx. 10"
- loads the pre-wash electrovalve for approx. 10"
- loads the wash electrovalve and pre-wash electrovalve at the same time until the pressure switch is on full

- heats up to 30° and moves the motor in both directions
- selector moves on for 9 notches
- drains and spins
- the selector knob stops on one of the reset positions
- STOP

The test cycle can be repeated as many times as you wish following the same procedures

The test cycle can be interrupted by positioning the selector knob on one of the reset positions.

3. Intervention in the event of a Fault

In the event of a fault, the procedure to go by is as follows:

F01: Triac Short circuit

Overhaul CNE

Replace Card

F02: Blocked Motor, Short-circuited/Open Tachometry

Overhaul CNE

Overhaul Motor connector

Control CNE Continuity/Motor Connector

Control Motor Windings

Control Tachometry Windings

Replace Card

F03: Open/Short-Circuited NTC Found

Overhaul CNA

Control NTC Wiring

Control CNA/NTC Wiring Continuity

Replace NTC

Replace Card

F04: Overflow and Pressure Switch Empty found at the same time (Pressure Switch stuck on Empty)

Overhaul CN1

Overhaul Pressure Switch Contacts

Control CN1/Pressure Switch Continuity

Replace Pressure Switch

Replace Card

F05: Blocked Pump or Pressure Switch stuck on Empty Found

Overhaul CNF (pump connector)

Overhaul Pump Connector

Control Pump Filter

Control Pump Windings

Change Pump

Replace Card

F06: Selector Error (a part no. cannot be found)

Overhaul CND (selector connector)

Overhaul Selector Connector

Control Selector/CND Continuity

Control Selector Motor

Replace Selector

Replace Card

F07: Resistance Relay Stuck

Overhaul CN1

Overhaul CN1

Overhaul Resistance Connection

Replace Card

Overhaul Resistance Connection

Replace Card

F08: Resistance Missing or Pressure Switch stuck on Full Found

Overhaul CN1

Overhaul Resistance Connection

Overhaul Pressure Switch Connection

Replace Resistance

Replace Pressure Switch

Replace Card

F09: Machine Setup Error Found

Control Microprocessor Version

Ask for EEPROM Spare Part indicating Microprocessor version

F10: Pressure Switch Empty and Full or neither Empty nor Full Pressure Switch Found

Overhaul CN1

Overhaul Pressure Switch Wiring

Control CN1/Pressure Switch Continuity

Replace Pressure Switch

Replace Card

F11: Pump Feedback Missing

Overhaul CN1

Overhaul CNF

Overhaul Pump Connector

Overhaul Pressure Switch Connector

Control Pump Windings

Replace Pump

Replace Card

F12 SPECIFIC FOR LVB2000 INDESIT EVOLUTION / DIALOGIC.

F12: Lack of Display card-Main Card Communication

1. Check the effectiveness of contacts on CNC Connector Card
2. Overhaul 8-way connector on Display card
3. Check continuity of CNC-CN 8 way connector
4. Replace Main Card
5. Replace Display Card

F13: NTC wiring harness disconnected from the dryer system

1. Check the efficiency of the terminals on the CNA connector board
2. Check NTC wiring harness
3. Check the wiring harness continuity of the CNA / NTC connectors
4. Replace NTC
5. Replace terminal board

F14: Dryer connector open or not connected

1. Check the efficiency of the terminals on the CNI connector board
2. Overhaul CN1
3. Overhaul connector connection
4. Replace the board. Merloni Elettrodomestici

F15: Dryer connector is always active

1. Check the efficiency of the terminals on the CNI connector board
2. Overhaul connector connection
3. Overhaul the pressure sensor connection
4. Replace the connector
5. Replace pressure sensor
6. Replace the board

F16: Non-functioning basket block

1. Go over connector card CNC

2. Go over connector basket block
3. Control Continuity of cabling CNC / basket block and basket block supply
4. Replace basket block
5. Replace card

N.B.From Fault F01 to fault F11

These are shown by LEDs in stand by/on in LVB2000 machines Ariston/Indesit.

From fault F01 to fault F12

These are shown in a display located on the instrument panel of LVB2000 machines

Evolution Indesit.

From fault F01 to fault F15

Are those that are indicated according to the version via LED stand by/on or

display positioned on the Wash Dry machine Ariston/Indesit panel.

4. Replacing the card

Should you have to replace the card:

- retrieve the EEPROM from the old card
- reassemble the EEPROM onto the new replacement card (without EEPROM)

In the event, and only in this case:

- an F02 has been detected
- the above-mentioned checks have been carried out and no problems have been detected on the wiring or to the motor
- the card fitted onto the washing machine is a 12 or 20 version (the version is indicated by a label on the module-containing box with SW20 or SW12)

you should:

- fit on a new card (version 32 or above)
- fit on an updated EEPROM to request from the assistance service centre, stating the code (e.g. 80xxxxx0000 or 46xxxxx0000), the serial number and the washing machine model.

n1040066

LB2000 Hardware (Serial Spanner and Pliers)

As of 05.04.2000, the following Spare Parts are available from the Warehouse:

Part no.066055 - Serial spanner for LVB2000 autotest. It has not to be linked to PC. (substituted with 077454);

Part no. 077454 - Serial spanner for LVB2000-PC White (substituted with 084566);

Part no. 084566 - Serial spanner for LB2000/EVOI -PC BIANCA (substituted with 095669 LB2000/EVOI, EVOII - PC).

Part no.066292 - Extractor pliers for integrated circuits.

For instructions on use, please refer to the relative Service Manual.

n1040078

WARNING: Remove the eeprom

Remove the eeprom with pliers part no. 066292 from the faulty module and insert it on the new module / display module, otherwise the machine will not function.

L'EPROM contains the software that characterizes the model, therefore each apparatus should have his own specific eeprom(see the list spare parts).

n1040151

Display

Display

All the options available are displayed on the right-hand side.

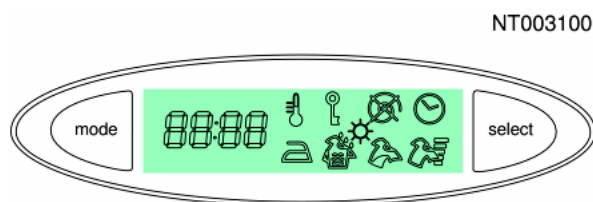
Use the mode button to select the desired option, and the relative symbol will begin flashing.

On the left-hand side, the value or the status (On-Off) of the selected option is displayed, and you can modify it using the select button.

To access the subsequent option, press the mode button, otherwise press button B to start the wash cycle.

All the options available are listed below.

Only options relevant to the selected programme will be displayed.



n1040160

Form Code 077471 Evolution range.

The form code 077471 must definitely be used on all the Washing machines in the Evolution range (WE).

To avoid the use of the form code 066054 for models in the Evolution range, the code has been eliminated from the list of spare parts leaving only the code 077471.

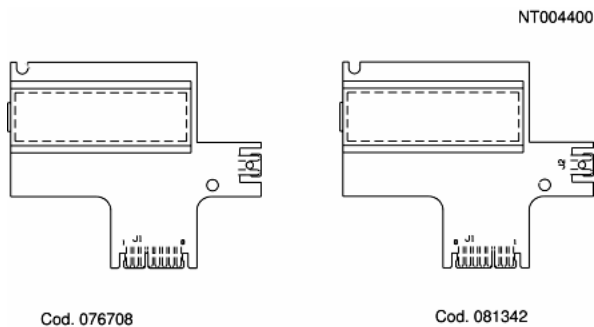
n1040181

Modified display connector polarity.

From the registration no. 10201.0001 on the Indesit Washing machines in the Evolution range due to production requirements the polarity has been modified on the connector of the display (see enclosed figure).

The new display code is 081342 may not be used on the pre-modification apparatus', therefore the 076708 will continue to be normally handled.

n1040197



Pressure sensor substituted

From the registration no. 10514.0001 on models involved by the present Notification the pressure sensor 1st level plus anti-spill code 075337 has been substituted with 064558 always at one level + anti-spill but with diverse settings.

n1040203

New display card and new power modulus EVOLUTION

From registration number 10620.0001, it is used the following components on every washing-machine belonging to Evolution series:

Cod. 084330 - Display card SW. 1.18 - 1.20 with a AMP connector;

Cod. 084331 - Electronic power modulus SW 1.72.

The new components are not interchangeable with the pre-modified ones, which will be used till to their sellout.

At the end of the sellout of display cards cod. 076708, cod. 081342 and of the power modulus cod. 077471, the following procedures will be executed on equipments Evolution produced before 20th June 2001:

- 1) In case of substituting of display card 076708 or 081342: use of the new display card with a pre-modified connector cod. 084409 and absolute use of the new power card cod. 084331.
- 2) In case of substituting of the power modulus cod. 077471: use of the new power modulus cod. 084331 and absolute use of the display card but with a modified connector cod. 084409.

n1040208

New hardware testing plug LB2000 Teverola.

From the registration number 10827.0001 on all washing machines LB2000 with program selector, produced in the factory in Teverola, a new hardware testing plug cod. 084817 is used.

The new plug is not interchangeable with the pre-modified one cod. 064899; so both have to be managed. In case of substitution of the piece of furniture on an equipment, preceding the registration number 10827.0001, it will be necessary to put on the suitable plug.

This modification of the registration number 10820.0001 is extended to all washing machines and wash-driers with a programs' selector produced in the factory in Comunanza.

n1040211

Serial cable to connect the hardware key with the PC.

To connect the hardware key: LB2000 with the personal computer, you must use

a serial cable, pin to pin 9 pin F/F, to guarantee the availability, it was

decided to manage it as a spare part.

The SAT code of the cable (length 2m) is 084943.

n1040230

Modified shock absorber bracket - Comunanza plant

From the registration no. 11107.0001, the washing machines and Washer-Dryers produced in the Comunanza factory Plant, have used modified shock absorbers with the bracket that fixes onto the cabinet.

The codes for the new shock absorbers are:

Code 086372 - Shock absorber 120 N (11105);

Code 086515 - Shock absorber 80 N (11105);

The modification also involved the cabinets in the fixing area that for the shock absorbers represent a different type of slotting (see enclosed figure).

To avoid the proliferation of the codes, the modified cabinets are handled with the same SAT code as the pre-modification, when replacing the cabinet you will need to check the registration number of the appliance.

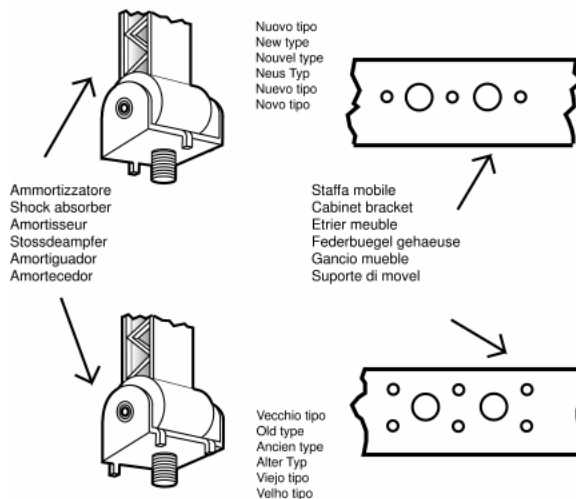
In order to perform a proper task the intervention of the cabinet replacement it is recommended, that at least in the initial phase, to keep both the combination of shock absorbers in stock. The shock absorbers code 066184 and 064503 will continue to be normally handled.

n1040236

DISPLAY CARD WITH NEW DISPLAY

From the registration number 11203.0001 on all the Washing Machines and Washer-Driers of the Evolution Range, a new card is used with a new display Code SAT 084759.

The new display card can be utilised instead of the pre-modified Code 084330, but not vice versa.



The card 084330 will be administered until stocks last.

n1040242

Power card with welded eeprom.

From serial number 20304.0001, IDC power card with welded eeprom is used to ensure the perfect connection of all parts, in the Comunanza, Teverola and Brembate factories.

To replace the module with welded eeprom, it will be necessary to use the eeprom indicated in the SAT document of the model concerned.

To replace the module on a unit with welded eeprom (Cod. 084838, 089405, 089404, 089416, 089074, and 090505), both the SAT module and the eeprom are required, because the latter cannot be reused.

n1040246

Button switch NO

From serial number 20302.0001, the button switch NO code 088394 is used instead of the premodified switch NO+NO code 075445 (see attached illustration) and the button switch SE-NO code 063971 is used instead of the premodified switch SE-NO code 058465 (see attached illustration) on washing machine AL68XPT .

Both switches are regularly managed, therefore in case of repair the serial number of the unit must be taken into consideration.

This modification also regards the wiring code 088448 which as with all the LB 2000 models, is managed only by request, i.e. without stock, in order to always manage the interchangeable one with the last modification.

Due to the simplicity of the modification, the images of the wiring diagrams used remain the same as the IDC wiring diagrams already available on the WEB.

The modification will be also extended to other models which from time to time will be listed below.

COMUNANZA (Codes 063971 e 08394)

A1124UK (23572) Matr. 20318.0001;

A1234UK (23573) Matr. 20318.0001;

A1324UK (28068) Matr. 20318.0001;

AA1000BFR (25700) Matr. 20318.0001;

AAX106LFR (25698) Matr. 20318.0001;

AAX116LFR (25591) Matr. 20318.0001;

AAX126LFR (25699) Matr. 20318.0001;

AB104XTK (22505) Matr. 20318.0001;

AB108XEO (26389) Matr. 20318.0001;

AB108XIT (22443) Matr. 20318.0001;

AB63XGR (24894) Matr. 20318.0001;

AB65XEO (24492) Matr. 20318.0001;

AB67XIT (27896) Matr. 20318.0001;

AB84XTK (22504) Matr. 20318.0001;

AB87XIT (27897) Matr. 20318.0001;

AB88XEX (23681) Matr. 20318.0001;

AB88XIT (22444) Matr. 20318.0001;

ABS66XIT (28070) Matr. 20311.0001;

AL107FR (23684) Matr. 20318.0001;

AL108XBE (23648) Matr. 20318.0001;

AL108XSTK (22698) Matr. 20318.0001;

AL108XTK (22506) Matr. 20318.0001;

AL109SLFR (22495) Matr. 20318.0001;

AL109XAUS (26024) Matr. 20318.0001;

AL109XEU (22514) Matr. 20318.0001;

AL109XIT (22360) Matr. 20318.0001;

AL109XSK (25855) Matr. 20318.0001;

AL128XBE (23656) Matr. 20318.0001;

AL129SLBE (23990) Matr. 20318.0001;
AL129XAUS (23864) Matr. 20318.0001;
AL129XEU (22515) Matr. 20318.0001;
AL129XEU (22515) Matr. 20318.0001;
AL129XSK (25856) Matr. 20318.0001;
AL129XTK (22507) Matr. 20318.0001;
AL12SUK (24363) Matr. 20318.0001;
AL12UK (23576) Matr. 20318.0001;
AL67XHCGR (23885) Matr. 20318.0001;
AL68X (22363) Matr. 20318.0001;
AL68X (22363) Matr. 20318.0001;
AL68XEX (23863) Matr. 20318.0001;
AL68XSPT (22977) Matr. 20318.0001;
AL68XSPT (22977) Matr. 20318.0001;
AL78XPT (27627) Matr. 20318.0001;
AL78XSPT (27628) Matr. 20318.0001;
AL88XEU (22512) Matr. 20318.0001;
AL88XPT (22482) Matr. 20318.0001;
AL88XSPT (22483) Matr. 20318.0001;
AL89X (22362) Matr. 20318.0001;
AL89XSIT (22445) Matr. 20318.0001;
AL98XPT (27629) Matr. 20318.0001;
AL98XSPT (27630) Matr. 20318.0001;
ALS104XFR (22501) Matr. 20311.0001;
ALS109XEU (22520) Matr. 20311.0001;
ALS109XIT (22470) Matr. 20311.0001;
ALS109XIT (22470) Matr. 20311.0001;
ALS129XEU (22521) Matr. 20311.0001;
ALS68XIT (22473) Matr. 20311.0001;
ALS869XIT (24887) Matr. 20311.0001;
ALS88XEO (26391) Matr. 20311.0001;

ALS88XEU (22519) Matr. 20311.0001;
ALS89XIT (22472) Matr. 20311.0001;
ALS89XIT (22472) Matr. 20311.0001;
ALS89XSIT (22471) Matr. 20311.0001;
L687XIT (24890) Matr. 20318.0001;
L687XIT (24890) Matr. 20318.0001;
LE1069XIT (27895) Matr. 20318.0001;
LE869XIT (24884) Matr. 20318.0001;
LES669XIT (24886) Matr. 20311.0001;
W104TKSTK (24746) Matr. 20318.0001;
W104TXTK (23411) Matr. 20318.0001;
W105TXEX (23403) Matr. 20318.0001;
W105XDE (24835) Matr. 20318.0001;
W106XDE (28089) Matr. 20318.0001;
W108XIT (23402) Matr. 20318.0001;
W108XSP (23408) Matr. 20318.0001;
W123SUK (23413) Matr. 20318.0001;
W123UK (23369) Matr. 20318.0001;
W123XNL (23416) Matr. 20318.0001;
W124XDE (24837) Matr. 20318.0001;
W124XNL (23418) Matr. 20318.0001;
W125TXCH (28194) Matr. 20318.0001;
W125TXEX (23378) Matr. 20318.0001;
W125XDE (24838) Matr. 20318.0001;
W125XFR (24435) Matr. 20318.0001;
W125XSDE (24839) Matr. 20318.0001;
W126XDE (24840) Matr. 20318.0001;
W128XFR (27701) Matr. 20318.0001;
W128XSP (24428) Matr. 20318.0001;
W682XSIT (24813) Matr. 20318.0001;
W683XGIT (24812) Matr. 20318.0001;

W68XIT (24408) Matr. 20318.0001;
W68XSIT (24409) Matr. 20318.0001;
W842XSIT (24818) Matr. 20318.0001;
W843XGIT (24820) Matr. 20318.0001;
W84TXEX (23401) Matr. 20318.0001;
W84TXTK (23410) Matr. 20318.0001;
W84XSP (23409) Matr. 20318.0001;
W84XSP (24469) Matr. 20318.0001;
W857XSPT (26661) Matr. 20318.0001.
W88XIT (23395) Matr. 20318.0001;
WA10XIT (26883) Matr. 20318.0001;
WA10XIT (26883) Matr. 20318.0001;
WA6XIT (26881) Matr. 20318.0001;
WA8XIT (26882) Matr. 20318.0001;
WA8XSIT (26919) Matr. 20318.0001;
WAS6XIT (27052) Matr. 20311.0001;
WAS8XIT (27053) Matr. 20311.0001;
WS105TXEX (23356) Matr. 20311.0001;
WS682XSIT (24826) Matr. 20311.0001;
WS683XGIT (24822) Matr. 20311.0001;
WS68XIT (24594) Matr. 20311.0001;
WS84TXEX (23355) Matr. 20311.0001;
WS88XIT (23349) Matr. 20311.0001;

TEVEROLA (Code 063971)

AB40AG (26350) Matr. 20304.0001;
AB40EX (24733) Matr. 20304.0001;
AB40IT (22468) Matr. 20304.0001;
AB43AG (24364) Matr. 20304.0001;
AB43EX50-60HZ (23907) Matr. 20304.0001;
AB43IT (22467) Matr. 20304.0001;

AB43PT (22489) Matr. 20304.0001;
AB43SP (23899) Matr. 20304.0001;
AB52PT (27554) Matr. 20304.0001;
AB53AG (27088) Matr. 20304.0001;
AB53EO (23780) Matr. 20304.0001;
AB53EX50-60HZ (23908) Matr. 20304.0001;
AB53IT (22460) Matr. 20304.0001;
AB56FR (22740) Matr. 20304.0001;
AB60IT (26971) Matr. 20304.0001;
AB63IT (22455) Matr. 20304.0001;
AB64AG (24365) Matr. 20304.0001;
AB64AG (24365) Matr. 20304.0001;
AB64PT (22486) Matr. 20304.0001;
AB66FR (22490) Matr. 20304.0001;
BE563IT (24882) Matr. 20304.0001;
W41IT (27758) Matr. 20304.0001;
W432SIT (24806) Matr. 20304.0001;
W432SIT (24806) Matr. 20304.0001;
W435PT (23319) Matr. 20304.0001;
W43FR (23312) Matr. 20304.0001;
W43IT (23299) Matr. 20304.0001;
W43IT (23299) Matr. 20304.0001;
W43SP (27506) Matr. 20304.0001;
W43SP (27506) Matr. 20304.0001;
W43TAG (23323) Matr. 20304.0001;
W43TAG (23323) Matr. 20304.0001;
W43TEX (23306) Matr. 20304.0001;
W43TEX (23306) Matr. 20304.0001;
W44IT (23294) Matr. 20304.0001;
W44XIT (25547) Matr. 20304.0001;
W4521E (25377) Matr. 20304.0001;

W4521E (25377) Matr. 20304.0001;
W535PT (23385) Matr. 20304.0001;
W53FR (25471) Matr. 20304.0001;
W53IT (23300) Matr. 20304.0001;
W53SP (23338) Matr. 20304.0001;
W53TEX (24767) Matr. 20304.0001;
W53TEX (24767) Matr. 20304.0001;
W543GIT (25688) Matr. 20304.0001;
W630FR (24613) Matr. 20304.0001;
W634PT (24627) Matr. 20304.0001;
W63FR (23341) Matr. 20304.0001;
W63IT (23295) Matr. 20304.0001;
W63SP (23316) Matr. 20304.0001;
W63TEX (23305) Matr. 20304.0001;
W63XIT (25544) Matr. 20304.0001;
W642TXEX (25548) Matr. 20304.0001;
W64IT (24413) Matr. 20304.0001;
W6521E (25378) Matr. 20304.0001;
WA8IT (26879) Matr. 20304.0001;
WP42IT (27759) Matr. 20304.0001;
WP42IT (27759) Matr. 20304.0001;
WP62EX (27760) Matr. 20304.0001;

n1040286

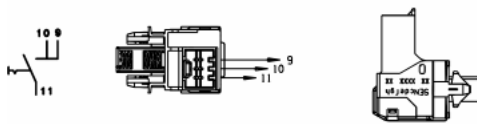
Shock absorbers with 8.15 mm fixing hole.

From serial number 30127.0001, for appliances produced in the Comunanza factory, the shock absorbers will be fixed to the tank unit cradle using: the 8 mm diameter screw code 093750 in place of the 10 mm screw code 030446, and related locking nut code 030443 in place of code 030680.

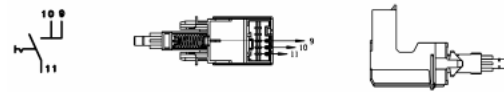
The items affected by this modification are:

Code 093848 - Tank unit cradle 46 lt ;

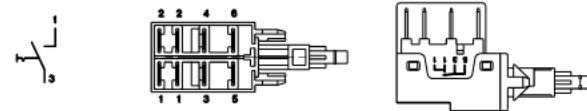
Cod. 088394



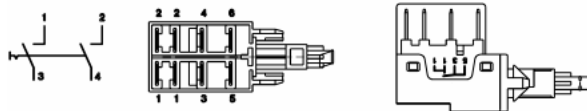
Cod. 075445



Cod. 063971



Cod. 058465



Code 093878 - Tank unit cradle 40 lt.

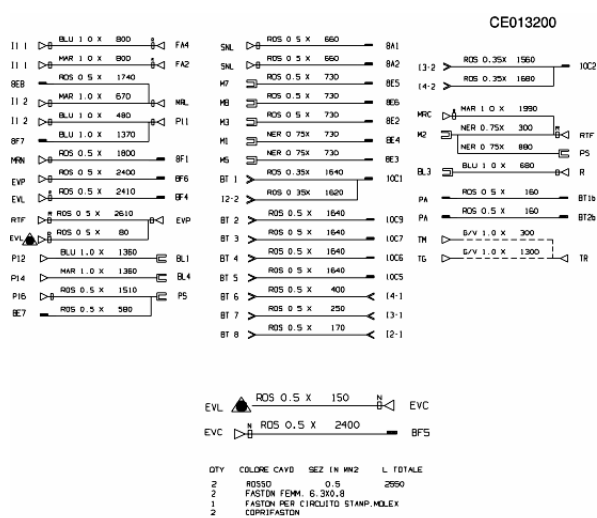
Code 093884 - Shock absorber 80 N

Code 093885 - Shock absorber 120 N

The premodified shock absorbers code 086515 and 086372 will continue to be used, whereas cradles code 064518 and 066074 will be used until stocks run out, after which they will be replaced with the new items after widening the shock absorber fixing holes to a diameter of 11 mm.

Electric schemes and links

Cod. ce013200



COMPRESSIVO "B" EV CALDA

Legend

Legend: ce013200

AQS	Aquastop electrovalve	Mzbn/MTA	zbn timer motor
B	Buzzer	N	Neutral or Terminal Board
BC		NC	Spin cycle exclusion
BF	Terminal board contact, motor fan and dryer heating	P	Pressure switch
BP	Buzzer	PA	High speed potentiometer
C	Condensator	PB	Low speed potentiometer
CA	Condensator	PL	Pure Wool
DV	Switching device	PM	Motor Thermoprotector
EF/CL	Electro-Valve Cold Water / Bleach	PR	Timer programmer or Pressure switch
EF/L	Electro-Valve Cold Water / Wash	PS	Drain pump
EF/P	Electro-Valve Cold Water / Prewash	P1	1st level pressure cut-off switch
ER	Exclude Heating Element	P2	2nd level pressure cut-off switch
ET	Thermostat disactivation	R	Heating element
EV	Electrovalve	Ras/RA	Dryer heating element
EVA	Dryer electrovalve	RE	Relay
EVC	Hot water electrovalve	RR	Heating element
EVF	Elettrovalvola acqua fredda	RV	Speed regulator
EVL	Wash electrovalve	S	LED
EVP	Pre Wash electrovalve	SL	Line LED
FA	Antijamming filter	SO	Door LED
FD	Delicate drying cycle thermostat	SR	Heating LED
FE	Strong drying cycle thermostat	ST	Temperature selector
FRT	Thermofusible Heating Element	SV	Speed Selector for Spin
I	Inverter	T	Timer contacts
IA	Switch On/Off	TA	Drying timer contacts

IC	Switch N.C. - 1/2 Load	TB	Low Temperature Thermostat
ID	Switch display	TC	Spider wheel earth
IE	Water Saving Device	TFL	Flange earth
IF	Switch - Spin Reduction	TG	Main earth
IP	Door switch	TH	Thermostat
IR	Line switch	THF	Operating thermostat
IS	Water-stop	THR	Adjustable thermostat
I1..2..3..	Switches/switching devices	TH1	1st temperature thermostat
L	Line or Lamp	TH2	2nd temperature thermostat
LB	Low Level	TH3	3rd temperature thermostat
LN	Normal Level	TM	Motor earth
LS	Pilot lamp	TMB	Main cabinet earth
M	Earth-symbol	TMP	Motor thermal protector
MC	Spin cycle motor	TMS	Thermostop
MI	MOTOR WITH PULLEY	TP	Thermal protector
ML	Wash cycle motor	TPS	Drain pump earth
MO	Terminal Board	TR	Heating element earth
MP	Door dip-switch	TS	Safety thermostat
MR	Thermal Lock	TT	Timer earthing connection
MT	Timer motor	TTH	Earthing Thermostat
MV	Motor fan	TV	Tank earth
MV -Ras	Dryer heating element	ZBN	Timer

Electric schemes and links

Cod. Ig026300

PROGETTO: 28247740000 (VERSIONE) del 01-26-2001

CONFIGURAZIONE MACCHINA:

Tipologia 1B [ARISTON]
Acquastop OFF
M. Testi 3
M. Manopole 2
Rapporto trasmissione 15.7
Velocità massima 800 RPM
Vel. distribuzione 93
Limite MTC Lev. fault 215
Vel. mezzo campo 1600
Versione EEPROM 1
Ev. calda OFF
Recupero detergente ON
Sensore conducibilità OFF
Display elettronico OFF
Decilitri 1° liv. 51
Temper. antishock 164
Cicli Lav. riterature 0
Alcal. fine risc. 0
Alcal. fine risc. extra 0
Liv. sbilanc. 1 400 g
Liv. sbilanc. 2 1000 g
Liv. sbilanc. lana 1800 g
Test. ribil. 1 56
Test. ribil. 2 15
Test. ribil. lana 3
Max RPM liv. sbil. 1 600
Max RPM liv. sbil. 2 400
Rapido (tempo / 3) 0
Delicato (duty-cycle) 0
EW stacco immediato -1.00
EW stacco ritardato 0.00
Timeout riattacco 900
Timeout disinfezione 30

TABELLA DEI TASTI

TASTO 1 (18 -> Antimeccia) (OFF)
TASTO 2 (24 -> IronMia) (OFF)
TASTO 3 (1 -> Antipiega) (OFF)

TABELLA DELLE MANOPOLE

MANOPOLA 1 (5 -> Intensivo / Rapido) (OFF)
[4] [2] [0] [0] [0] [0] [0] [0]
[23] [12] [0] [0] [0] [0] [0] [0]
MANOPOLA 2 (6 -> Livello Risciacquo) (OFF)
[0] [100] [255] [0] [0] [0] [0] [0]

TABELLA DELLE MOVIMENTAZIONI

MOVIMENTAZIONE 1
Sinistra (OFF 4 ON 6 RPM 25) Destra (OFF 4 ON 11 RPM 25)
MOVIMENTAZIONE 2
Sinistra (OFF 4 ON 11 RPM 62) Destra (OFF 4 ON 6 RPM 62)
MOVIMENTAZIONE 3
T. BIO. 30 T. MOV. 90
Sinistra (OFF 4 ON 6 RPM 25) Destra (OFF 4 ON 6 RPM 25)
MOVIMENTAZIONE 4
Sinistra (OFF 6 ON 9 RPM 40) Destra (OFF 6 ON 9 RPM 40)
MOVIMENTAZIONE 5
Sinistra (OFF 2 ON 13 RPM 40) Destra (OFF 2 ON 13 RPM 40)
MOVIMENTAZIONE 6
Sinistra (OFF 11 ON 4 RPM 25) Destra (OFF 11 ON 4 RPM 25)
MOVIMENTAZIONE 7
Sinistra (OFF 56 ON 4 RPM 25) Destra (OFF 56 ON 4 RPM 25)
MOVIMENTAZIONE 8
T. BIO. 120 T. MOV. 0
Sinistra (OFF 0 ON 0 RPM 0) Destra (OFF 0 ON 0 RPM 0)
MOVIMENTAZIONE 9
T. BIO. 20 T. MOV. 0
Sinistra (OFF 0 ON 0 RPM 0) Destra (OFF 0 ON 0 RPM 0)
MOVIMENTAZIONE 10
T. BIO. 60 T. MOV. 121
Sinistra (OFF 1 ON 0 RPM 0) Destra (OFF 1 ON 0 RPM 0)
MOVIMENTAZIONE 11
Sinistra (OFF 36 ON 4 RPM 25) Destra (OFF 36 ON 4 RPM 25)
MOVIMENTAZIONE 12
Sinistra (OFF 4 ON 8 RPM 35) Destra (OFF 4 ON 8 RPM 35)
MOVIMENTAZIONE 13
Sinistra (OFF 20 ON 5 RPM 35) Destra (OFF 20 ON 5 RPM 35)
MOVIMENTAZIONE 14
Sinistra (OFF 14 ON 16 RPM 55) Destra (OFF 14 ON 16 RPM 55)

TABELLA DELLE CENTRIFUGHE

CENTRIFUGA 0 (Solo Scarico)

CENTRIFUGA 1

Imp.	Rampa	T. Distrib.	T. Centrifuga	RPM
1	1	30	1	400
2	0	30	3	450
3	0	30	1	500
4	0	30	3	500
5	0	30	3	600
6	0	30	120	600

CENTRIFUGA 2

Imp.	Rampa	T. Distrib.	T. Centrifuga	RPM
1	0	30	20	400
2	0	30	20	600
3	0	30	0	0

CENTRIFUGA 3

Imp.	Rampa	T. Distrib.	T. Centrifuga	RPM
1	1	30	3	400
2	0	30	3	600
3	0	30	30	600
4	1	25	30	800

1 Cerica*[EVL/O.P.](0) + 2 Movimento*[C.P.](1) + 3
Mantieni*[min/C.C.P.](2)
4 Cerica*[EVL/O.P.](0) + 5 Movimento*[C.P.](1) + 6 Riscaldi*[(120) + 7
Mantieni*[min/C.C.P.](5)

FASE 3 (Biodinamico - Meccia) -> Macro 32 (81 min)
1 If button*[Antimeccia (pressed) esegui poi vai m.p. 5] + 2
Cerica*[EVL/O.P.](0) + 3 Movimento*[C.P.](3) + 4 Mantieni*[min/C.C.P.](5)

FASE 4 (Biodinamico) -> Macro 29 (81 min)
1 *[Cambia default](0: 1)
2 If button*[IronMia (unpressed) esegui poi vai m.p. 6] + 3
Cerica*[EVL/O.P.](0) + 4 Movimento*[C.P.](2) + 5 Mantieni*[min/C.C.P.](5)
6 Cerica*[EVL/O.P.](0) + 7 Movimento*[C.P.](14) + 8
Mantieni*[min/C.C.P.](5)

FASE 5 (Riscaldamento) -> Macro 2 (76 min)
1 Cerica*[EVL/O.P.](0) + 2 Movimento*[C.P.](1) + 3 Riscaldi*[(157) + 4
Mantieni*[min/C.C.P.](1)

FASE 6 (Meccanico - Meccia) -> Macro 32 (67 min)
1 If button*[Antimeccia (pressed) esegui poi vai m.p. 5] + 2
Cerica*[EVL/O.P.](0) + 3 Movimento*[C.P.](4) + 4 Mantieni*[min/C.C.P.](10)

FASE 7 (Meccanico) -> Macro 21 (67 min)
1 *[Cambia default](0: 1)
2 If button*[IronMia (pressed) esegui poi vai m.p. 6] + 3
Cerica*[EVL/O.P.](0) + 4 Movimento*[C.P.](14) + 5 Mantieni*[min/C.C.P.](30)
6 If button*[IronMia (pressed) esegui poi vai m.p. 12] + 7
Centrifuga*[SCAR./SRTA](0)
8 Cerica*[EVL/O.P.](0) + 9 Movimento*[C.P./80%](4) + 10
Mantieni*[min/C.C.P.](30)
11 Centrifuga*[(16)

FASE 8 (Risciacquo) -> Macro 22 (34 min)
1 If button*[IronMia (pressed) esegui poi vai m.p. 5] + 2

Legend

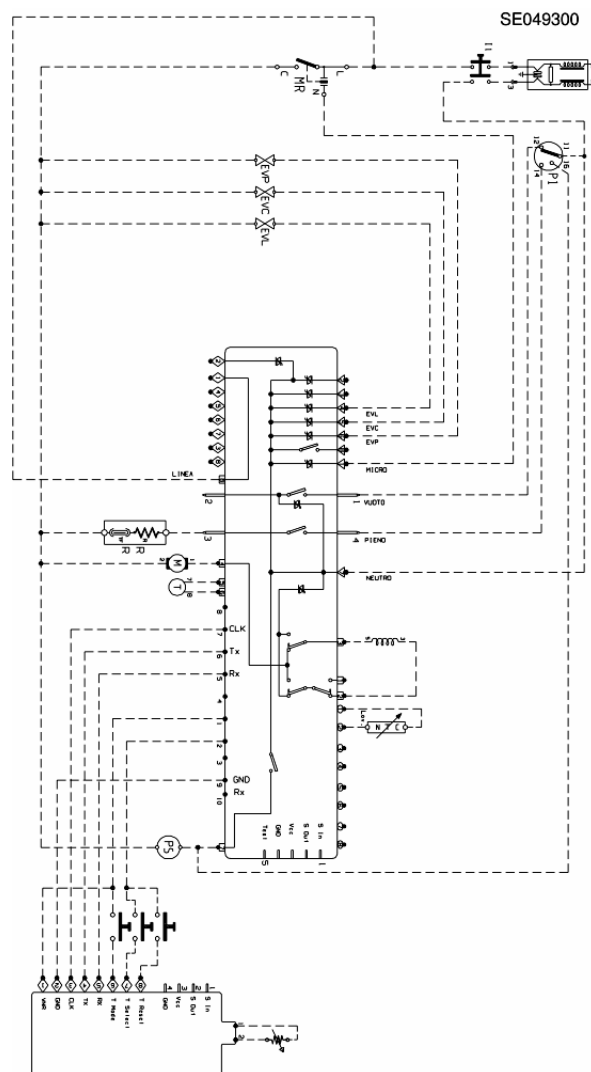
Legend: Ig026300

AQS	Aquastop electrovalve	Mzbn/MTA	zbn timer motor
B	Buzzer	N	Neutral or Terminal Board
BC		NC	Spin cycle exclusion
BF	Terminal board contact, motor fan and dryer heating	P	Pressure switch
BP	Buzzer	PA	High speed potentiometer
C	Condensator	PB	Low speed potentiometer
CA	Condensator	PL	Pure Wool
DV	Switching device	PM	Motor Thermoprotector
EF/CL	Electro-Valve Cold Water / Bleach	PR	Timer programmer or Pressure switch
EF/L	Electro-Valve Cold Water / Wash	PS	Drain pump
EF/P	Electro-Valve Cold Water / Prewash	P1	1st level pressure cut-off switch
ER	Exclude Heating Element	P2	2nd level pressure cut-off switch
ET	Thermostat disactivation	R	Heating element
EV	Electrovalve	Ras/RA	Dryer heating element
EVA	Dryer electrovalve	RE	Relay
EVC	Hot water electrovalve	RR	Heating element
EVF	Elettrovalvola acqua fredda	RV	Speed regulator
EVL	Wash electrovalve	S	LED
EVP	Pre Wash electrovalve	SL	Line LED
FA	Antijamming filter	SO	Door LED
FD	Delicate drying cycle thermostat	SR	Heating LED
FE	Strong drying cycle thermostat	ST	Temperature selector
FRT	Thermofusible Heating Element	SV	Speed Selector for Spin
I	Inverter	T	Timer contacts
IA	Switch On/Off	TA	Drying timer contacts

IC	Switch N.C. - 1/2 Load	TB	Low Temperature Thermostat
ID	Switch display	TC	Spider wheel earth
IE	Water Saving Device	TFL	Flange earth
IF	Switch - Spin Reduction	TG	Main earth
IP	Door switch	TH	Thermostat
IR	Line switch	THF	Operating thermostat
IS	Water-stop	THR	Adjustable thermostat
I1..2..3..	Switches/switching devices	TH1	1st temperature thermostat
L	Line or Lamp	TH2	2nd temperature thermostat
LB	Low Level	TH3	3rd temperature thermostat
LN	Normal Level	TM	Motor earth
LS	Pilot lamp	TMB	Main cabinet earth
M	Earth-symbol	TMP	Motor thermal protector
MC	Spin cycle motor	TMS	Thermostop
MI	MOTOR WITH PULLEY	TP	Thermal protector
ML	Wash cycle motor	TPS	Drain pump earth
MO	Terminal Board	TR	Heating element earth
MP	Door dip-switch	TS	Safety thermostat
MR	Thermal Lock	TT	Timer earthing connection
MT	Timer motor	TTH	Earthing Thermostat
MV	Motor fan	TV	Tank earth
MV -Ras	Dryer heating element	ZBN	Timer

Electric schemes and links

Cod. se049300



Legend

Legend: se049300

AQS	Aquastop electrovalve	Mzbn/MTA	zbn timer motor
B	Buzzer	N	Neutral or Terminal Board
BC		NC	Spin cycle exclusion
BF	Terminal board contact, motor fan and dryer heating	P	Pressure switch
BP	Buzzer	PA	High speed potentiometer
C	Condensator	PB	Low speed potentiometer
CA	Condensator	PL	Pure Wool
DV	Switching device	PM	Motor Thermoprotector
EF/CL	Electro-Valve Cold Water / Bleach	PR	Timer programmer or Pressure switch
EF/L	Electro-Valve Cold Water / Wash	PS	Drain pump
EF/P	Electro-Valve Cold Water / Prewash	P1	1st level pressure cut-off switch
ER	Exclude Heating Element	P2	2nd level pressure cut-off switch
ET	Thermostat disactivation	R	Heating element
EV	Electrovalve	Ras/RA	Dryer heating element
EVA	Dryer electrovalve	RE	Relay
EVC	Hot water electrovalve	RR	Heating element
EVF	Elettrovalvola acqua fredda	RV	Speed regulator
EVL	Wash electrovalve	S	LED
EVP	Pre Wash electrovalve	SL	Line LED
FA	Antijamming filter	SO	Door LED
FD	Delicate drying cycle thermostat	SR	Heating LED
FE	Strong drying cycle thermostat	ST	Temperature selector
FRT	Thermofusible Heating Element	SV	Speed Selector for Spin
I	Inverter	T	Timer contacts
IA	Switch On/Off	TA	Drying timer contacts

IC	Switch N.C. - 1/2 Load	TB	Low Temperature Thermostat
ID	Switch display	TC	Spider wheel earth
IE	Water Saving Device	TFL	Flange earth
IF	Switch - Spin Reduction	TG	Main earth
IP	Door switch	TH	Thermostat
IR	Line switch	THF	Operating thermostat
IS	Water-stop	THR	Adjustable thermostat
I1..2..3..	Switches/switching devices	TH1	1st temperature thermostat
L	Line or Lamp	TH2	2nd temperature thermostat
LB	Low Level	TH3	3rd temperature thermostat
LN	Normal Level	TM	Motor earth
LS	Pilot lamp	TMB	Main cabinet earth
M	Earth-symbol	TMP	Motor thermal protector
MC	Spin cycle motor	TMS	Thermostop
MI	MOTOR WITH PULLEY	TP	Thermal protector
ML	Wash cycle motor	TPS	Drain pump earth
MO	Terminal Board	TR	Heating element earth
MP	Door dip-switch	TS	Safety thermostat
MR	Thermal Lock	TT	Timer earthing connection
MT	Timer motor	TTH	Earthing Thermostat
MV	Motor fan	TV	Tank earth
MV -Ras	Dryer heating element	ZBN	Timer