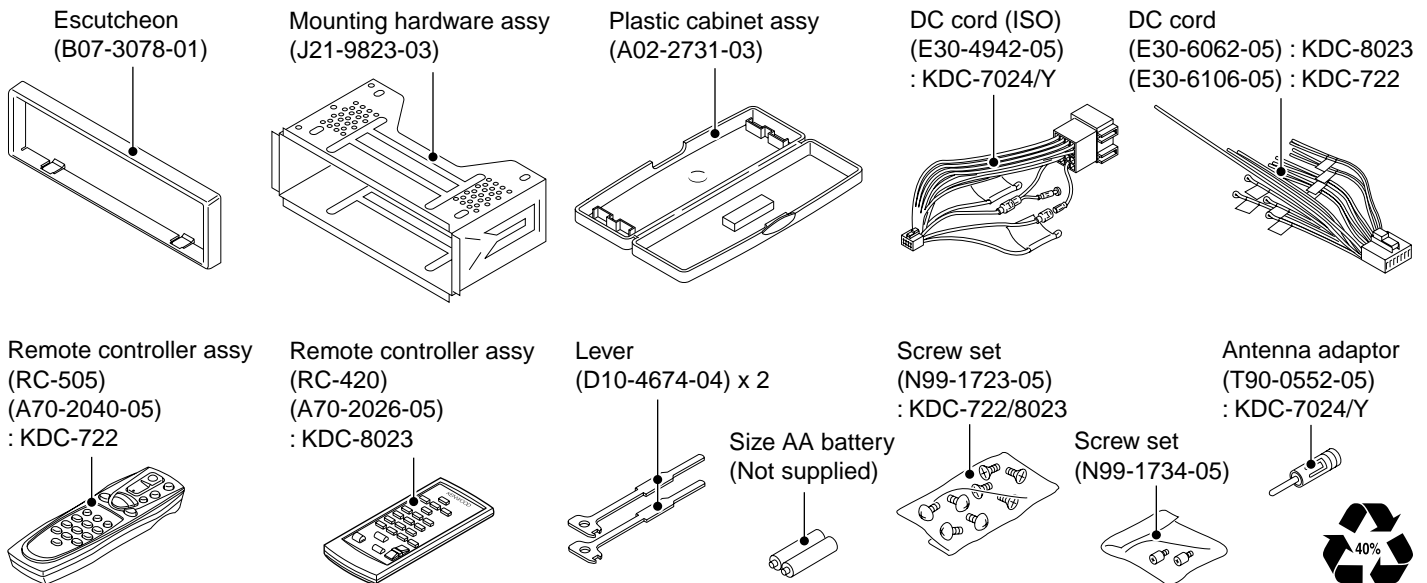
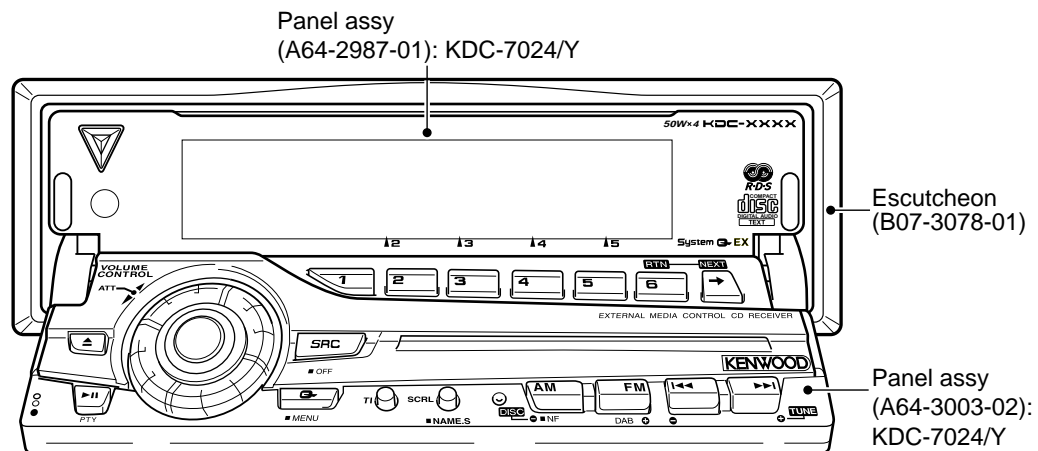
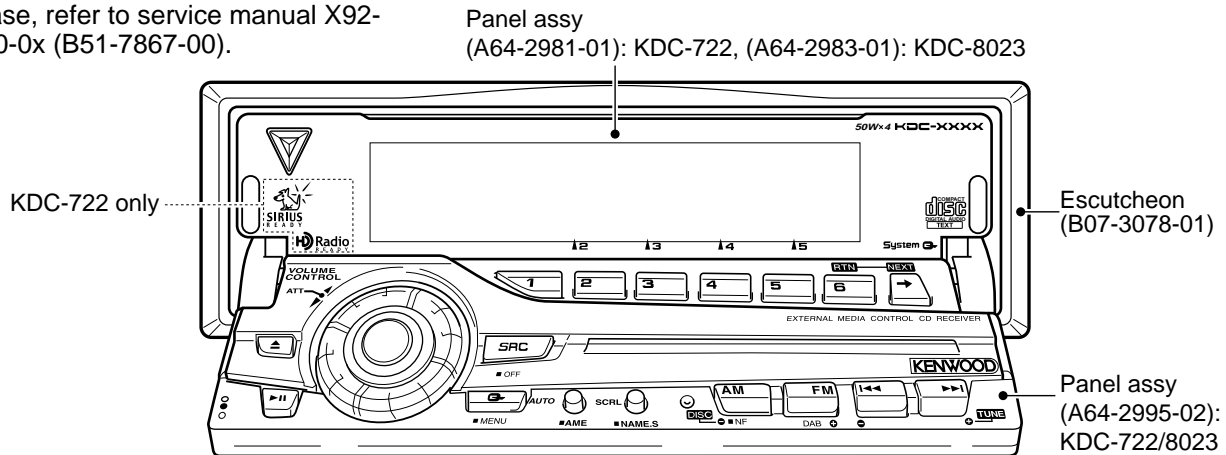


KDC-7024/Y KDC-722 KDC-8023 SERVICE MANUAL

CD mechanism operation description is not in this service manual.
Please, refer to service manual X92-4030-0x (B51-7867-00).

CD mechanism extension cord : W05-0935-00



HOW TO THE PANEL MECHANISM ASSEMBLY

1. Fixed the position of operation side

(Fixed the horizontal position when the panel opened)

- ① The mounting hardware (281) of operation side is rotation (A) into the stop position with close side.
- ② As figure (B) line is just above and the gear (230) attached to pin.

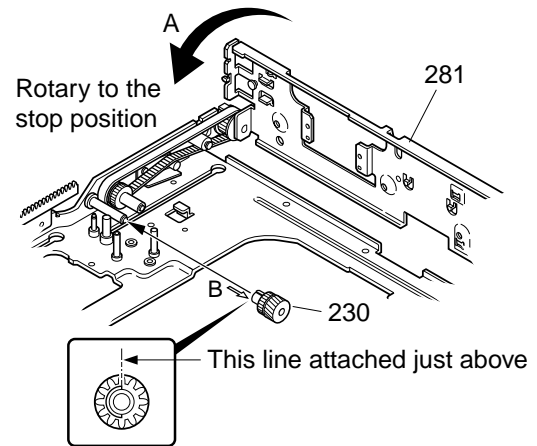
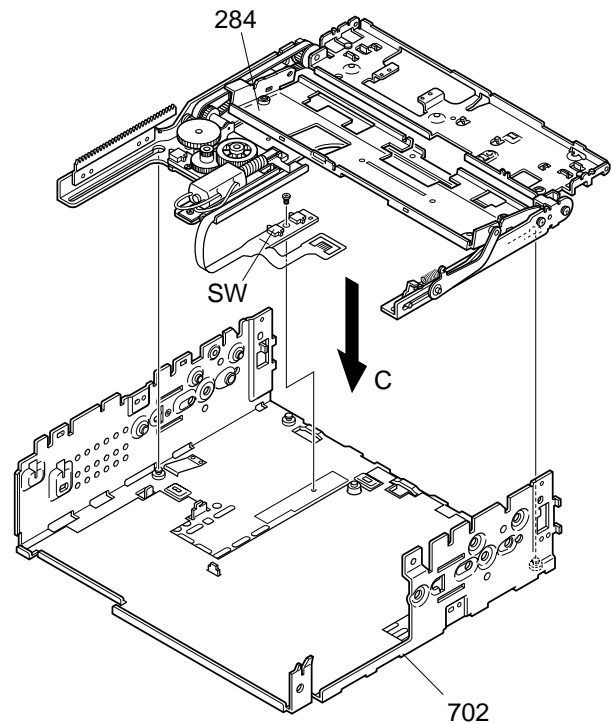


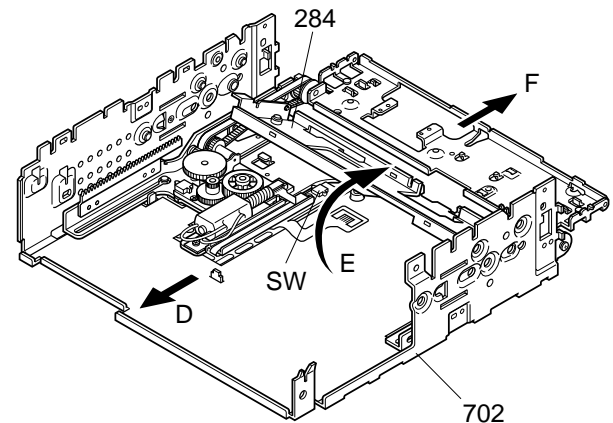
Fig. B
(This figure from look at B arrow)

2. The slider assembly insert to bottom chassis

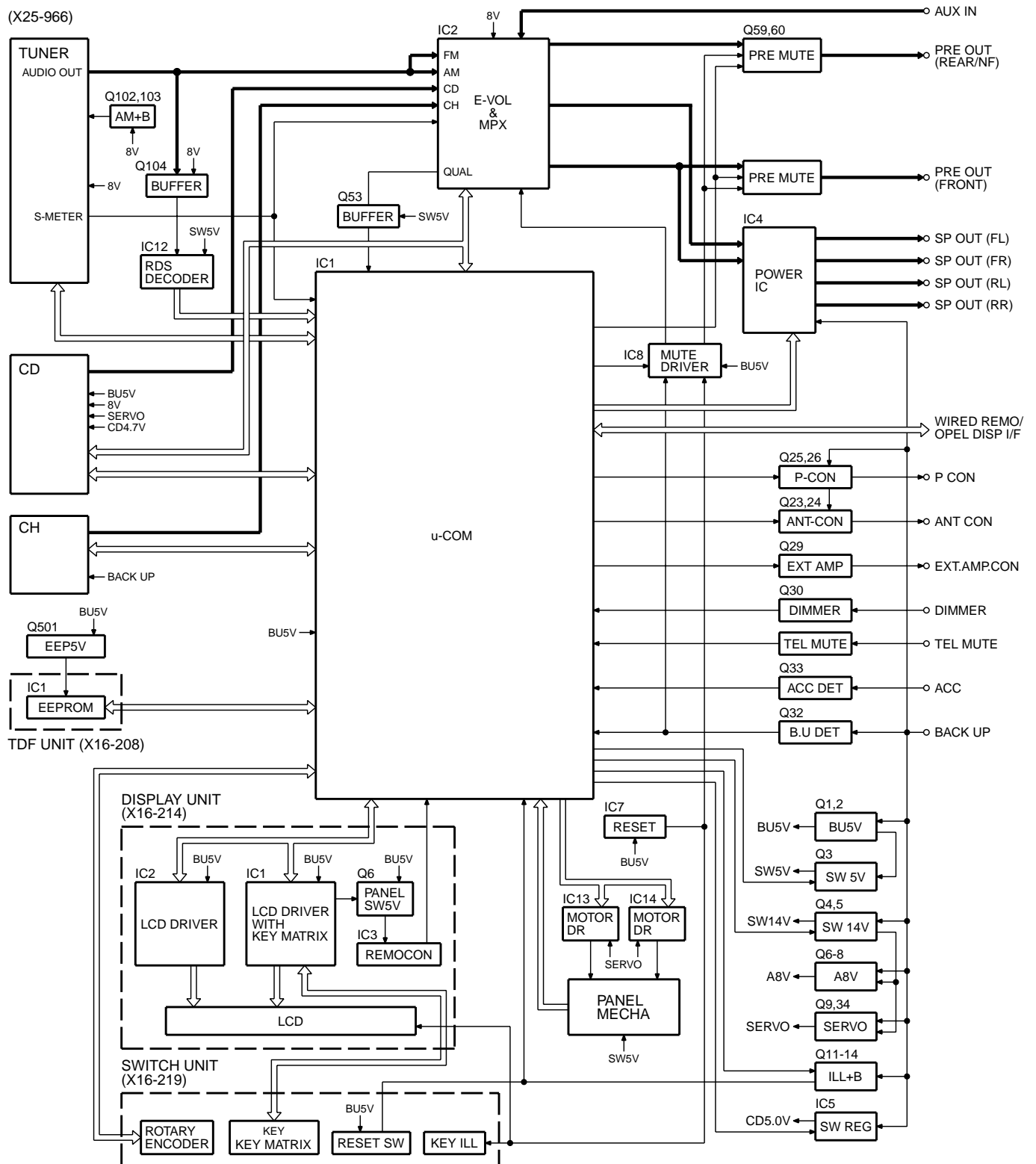
- ① The bracket for display panel (284) is leave down, insert to the chassis (702). (C)



- ② The slider assembly insert to the chassis (702) after that shift (D) direction.
 - ③ The bracket for display panel (284) is raised (E) direction.
 - ④ Keep the raising conditions, the slider assembly is shift (F) direction.
- (Note) Do not bend the knob of chassis detection switch when the slider assembly insert.



BLOCK DIAGRAM



COMPONENTS DESCRIPTION

● SUB-CIRCUIT UNIT (X16-2080-10)

Ref. No.	Application/Function	Operation/Condition/Compatibility
IC1	E2PROM	For security

● SUB-CIRCUIT UNIT (X16-2140-10)

Ref. No.	Application/Function	Operation/Condition/Compatibility
IC1	LCD driver	KEY Input
IC2	LCD driver	
IC3	Remote control sensor	
Q1	KEY scan start SW	ON when the base goes "L".
Q5, D26	VLCD AVR	
Q6	Remote control sensor power supply SW	ON when the base goes "L".
Q11	Dimmer control	LCD back light control. OFF when the base goes "L", ON when the base goes "H".

● SWITCH UNIT (X16-2190-10)

Ref. No.	Application/Function	Operation/Condition/Compatibility
Q1	DSI (Disabled System Indicator)	DSI blinks when the base goes "H/L"
Q2	KEY illumination SW (GREEN)	ON (KEY illumination green) when the base goes "H"
Q3	KEY illumination SW (RED)	ON (KEY illumination red) when the base goes "H"

● ELECTRIC UNIT (X25-966x-xx)

Ref. No.	Application/Function	Operation/Condition/Compatibility
IC1	System μ -com	
IC2	E-vol & N.C. & MPX	
IC3	Regulator IC for A8V	
IC4	Power IC	
IC7	Reset IC	
IC8	Logic IC for muting	
IC12	RDS decoder IC	
IC13, 14	Motor driver IC for panel mechanism	
IC15	ROM IC	For ROM correction.
Q1, 2	B.U.5V AVR	While BU is applied, BU5V AVR outputs +5V.
Q3	SW5V	When Q3'base goes Lo, SW5V outputs +5V.
Q4, 5	SW14V	When Q5'base goes Hi, SW14V outputs 14V.
Q6~8	AUDIO 8V AVR	When Q6'base goes Hi, A8V AVR outputs 8.4V.
Q9, 34	SERVO+B AVR	When Q34'base goes Hi, S+B AVR outputs 7.4V.
Q11~14	ILL+B AVR	When Q11'base goes Hi, AVR outputs 10.5V.
Q23, 24	P-ANT SW	When Q23'base goes Hi, P-ANT SW outputs 14V.
Q25, 26	P-CON SW	When Q26'base goes Hi, P-CON SW outputs 14V.
Q27, 28	P-CON protection	Protect Q27 by turning on when P-CON output is grounded.
Q29	Ex Amp control buffer	
Q30	Small lamp det SW	When Q30'base goes Hi, Q30 is turned on.
Q32	BU det	When Q32'base goes Hi, Q32 is turned on.
Q33	ACC det	When Q33'base goes Hi, Q33 is turned on.
Q51, 52	Mute driver	When a base goes Lo, mute driver is turned on.
Q53	Noise buffer	
Q54	E-vol mute SW	When a base goes Hi, mute SW is turned on.

COMPONENTS DESCRIPTION

Ref. No.	Application/Function	Operation/Condition/Compatibility
Q55, 56	Pre-out mute SW	When a base goes Hi, Pre-out is muted.
Q59, 60	Pre-out mute SW	When a base goes Hi, Pre-out is muted.
Q63	E2P 5V SW	When Q63's base goes Lo, E2P 5V is out.
Q102, 103	AM+B SW	When Q102's base goes Hi, AM+B is out.
Q104	Composite signal buffer for RDS	

MICROCOMPUTER'S TERMINAL DESCRIPTION

● SYSTEM MICROCOMPUTER : UPD703030GC015 (X25-966 : IC1)

Pin No.	Pin Name	I/O	Module	Purpose / Description	Truth table	Processing Operation
1	PLL_DATA	I/O	Tuner	Data output/input with F/E.		
2	AM+B	I/O	Power supply	AM+B.		AM operation : H
3	(FM+B)	O	Power supply	FM+B (S01 F/E only).		FM operation : H, Last FM : H (With RDS, RBDS model)
4	V_ILL PAN_E2P DATA	I/O	To panel	V-ILL D/A converter (V-ILL, LCD), E2PROM data.		
5	V_ILL PAN_E2P CLK	I/O	To panel	V-ILL D/A converter (V-ILL, LCD), E2PROM clock.		
6	EVDD	-				
7	EVSS	-				
8	AFS	O	Tuner	Noise detection time constant switching.		FM seek, AF search : L, Receiving : H, Auto 0 : L
9	BEEP	O	Audio	Beep output.		
10	REMO	I	Extra	Remote control input (Panel, External display).		
11	P_MUTE	O	Audio	Power IC MUTE output.		Power OFF : L, All OFF : L, TEL mute : L
12	(SVR)	O	Audio	Power IC SVR discharge circuit control.		Power OFF momentary power dropped : H (5 second) and then L
13	IC2_SDA	I/O	CD	CD mechanism data line.		
			Audio	IC2 data line.		
			Extra	ROM correction data line.		
14	IC2_CLK	I/O	CD	CD mechanism clock line.		
			Audio	IC2 clock line.		
			Extra	ROM correction clock line.		
15	P_STBY	O	Audio	Power IC STBY output.		Power IC ON : H, Power IC OFF : L, All OFF : H
16	P_CON	I/O	Extra	Power control.		Power ON : H, Power OFF : Hi-Z, All OFF : Hi-Z
17	DIMMER_CONT	O	To panel	Dimmer control (W-LED only).		Dimmer : Pulse control, Frequency : 1kHz, Normally : H
18	TEST	-				Connect to GND.
19	TYPE2	I	Extra	Destination select.	②	
	NC	O	Extra	NC (MP3 mechanism model).	②	Output : L
20	MUTE	O	Audio	Mute output.		ON : OPEN, OFF : L
21	PRE_MUTEL	O	Audio	PREOUT (L ch) mute.		M MUTE L is L : L (CD), Momentary power dropped : L, 2 zone, NAVI interrupt : Fixed H
22	PRE_MUTER	O	Audio	PREOUT (R ch) mute.		M MUTE R is L : L (CD), Momentary power dropped : L, 2 zone, NAVI interrupt : Fixed H

MICROCOMPUTER'S TERMINAL DESCRIPTION

Pin No.	Pin Name	I/O	Module	Purpose / Description	Truth table	Processing Operation
23	BU_DET	I	Extra	Momentary power dropped detection.		Backup : L, No backup, momentary power dropped : H
24	ACC_DET	I	Extra	ACC detection.		With ACC : L, Without ACC : H
25	SW5V	I/O	Power supply	5V power supply.		ON : L, OFF : Hi-Z
26	EXT_AMP_CONT	O	Extra	External amplifier control.		Refer to external amplifier control.
	NC	O		NC (Without EXT_AMP_CONT model)		Output : L
27	DIMMER	I	Extra	Small lamp detection.		ON : L, OFF : H
28	ANT_CON	O	Extra	Antenna control.	②	Tuner ON : H, Other source With RDS last FM : H, Other source with RDBS TI ON last FM : H
29	P_ON	I/O	Power supply	SW 14V, SW 5V control, AD reference voltage control output.		Power ON : H, Power OFF : Hi-Z
30	ILL_ON	I/O	Power supply	FL, illumination output.		ON : H, OFF : Hi-Z
31	RESET	-				
32	XT1	-		Sub clock.		32.768kHz
33	XT2	-		Sub clock.		32.768kHz
34	REGC	-				Connect to 1μF capacitor.
35	X2	-		Main clock.		20MHz
36	X1	-		Main clock.		20MHz
37	VSS	-				
38	VDD	-				
39	CLKOUT	-				
40	LX_REQ_M	O	LX	Communication request to external slave.		Request : L
41	LX_MUTE	I	LX	Mute request from external slave.		Mute ON : H
42	LX_CON	O	LX	External slave select.		ON : H, OFF : L
43	LX_RST	O	LX	Reset output to external slave μ-com.		Normally : L, After system reset : H (400ms or more) and then L
44	NC	O		NC (Without WMA, MP3 model)		Output : L
45	TYPE0	I	Extra	Destination select.	②	
46	TYPE1	I	Extra	Destination select.	②	
47	IC2_TYPE0	I	Extra	IC2 destination.	②	
48	IC2_TYPE1	I	Extra	IC2 destination.	②	
49	NC	O		NC		Output : L
50	E2P5V	I/O	Power supply	E2PROM, DA converter power supply control.		ON : L, OFF : Hi-Z
51	DSI	I/O	To panel	DSI control.		ON : L, OFF : Hi-Z
52	L_CE	O	To panel	Chip enable output to LCD driver.		
53	L_INH	O	To panel	Inhibit signal output to LCD driver.		Normally : H, Reset, momentary power dropped : L
54	VOL A	I	To panel	VOL input.		
55	BVDD	-				
56	BVSS	-				
57	VOL B	I	To panel	VOL input.		
58	M_RST	O	CD	Reset output to CD mechanism.		Normally : H, Reset : L (Per mechanism control)
59	M_STOP	O	CD	Stop request to CD mechanism.		Stop : L, CD : H
60	CD_SW3	I	CD	DC down switch detection.		Chucking : H
61	LO/EJ	I/O	CD	CD mechanism loading/eject switch.		Stop, brake : Hi-Z, Loading : L, Eject : H
62	MOSW	O	CD	CD mechanism motor driver switch.		Loading, eject, brake : H
63	FPM MOTOR B	O	P-mecha	FPM mechanism (Slider) control.	③	

MICROCOMPUTER'S TERMINAL DESCRIPTION

Pin No.	Pin Name	I/O	Module	Purpose / Description	Truth table	Processing Operation
64	FPM MOTOR F	O	P-mecha	FPM mechanism (Slider) control.	③	
65	FPM MOTOR O	O	P-mecha	FPM mechanism (Angle) control.	③	
66	FPM MOTOR C	O	P-mecha	FPM mechanism (Angle) control.	③	
67	O_DATA	I/O	Extra	External display data input/output.		External display
	NC	O		NC (Without external display model)		Output : L
68	O_CLK	I/O	Extra	External display clock input/output.		External display
	NC	O		NC (Without external display model)		Output : L
69	O_CE	I/O	Extra	External display chip enable input/output.		External display
	NC	O		NC (Without external display model)		Output : L
70	M_MUTER	I	CD	Mute request form CD mechanism. (R ch).		ON : L (CD)
71	AVDD	-				
72	AVSS	-				
73	AVREF	-		Connect to P_ON (29 pin).		
74	M_MUTEL	I	CD	Mute request form CD mechanism. (L ch).		ON : L (CD)
75	PAN_DET	I	To panel	Panel E2PROM detection.		With : L, Without : H
76	PHONE	I	Extra	PHONE detection.		TEL mute : 1V or less, NAVI mute : 2.5V or more, J type 1V or less, 2.5V or more : NAVI mute
	NC	I		NC (Without TEL-MUTE model)		Connect to GND.
77	FPM SW4	I	P-mecha	FPM mechanism position detection, mechanism detection.	③	3.75V or more : No mechanism, 1.25V or more : H, Less than 1.25V : L
78	FPM SW1	I	P-mecha	FPM mechanism position detection.	③	
79	FPM SW2	I	P-mecha	FPM mechanism position detection.	③	
80	FPM SW3	I	P-mecha	FPM mechanism position detection.	③	
81	FPM PHOUT	I	P-mecha	FPM mechanism position detection.	③	H : 2.2V or more
82	S_METER	I	Tuner	S-meter detection.		Refer to S03 F/E control.
83	NOISE	I	Tuner	FM noise detection.		Refer to S03 F/E control.
84	IFC_OUT	I	Tuner	F/E IFC OUT input.		With station : 2.5V or more, refer to S03 F/E control.
85	NC (POWER_DET)	I	Extra	Power IC DC offset detection.		03 model not used. Connect to GND.
86	NC	O		NC (Except J type)		Output : L
87	R_CLK	I	Tuner	RDS decoder clock input.		
	NC	I		NC (Without RDS, RBDS model)		Connecto to GND.
88	LX_REQ_S	I	LX	Receive request from external slave.		Request : L
89	KEY_REQ	I	To panel	Communication request from LCD driver		
90	CD_SW1	I	CD	Loading switch detection.		Loading start power off : L
91	CD_SW2	I	CD	12cm disc detection switch.		12cm disc power off : L
92	R_QUAL	I	Tuner	RDS decoder QUAL input.		
	NC	I		NC (Without RDS, RBDS model)		Connecto to GND.
93	R_DATA	I	Tuner	RDS decoder data input.		
	NC	I		NC (Without RDS, RBDS model)		Connecto to GND.
94	LX_DATA_S	I	LX	Data input from external slave.		
95	LX_DATA_M	O	LX	Data output to external slave.		
96	LX_CLK	I/O	LX	Clock input/output with external slave.		
97	L_DATA_L	I	To panel	Data input from LCD driver.		
98	L_DATAS	O	To panel	Data output to LCD driver.		
99	L_CLK	O	To panel	Clock output to LCD driver.		
100	PLL_CLK	I/O	Tuner	Clock input/output with F/E.		

MICROCOMPUTER'S TERMINAL DESCRIPTION

Truth table

② Destination port

MODEL	Destination	DISPLAY	TYPE2	TYPE1	TYPE0
KDC-X969	K	FL	0	0	0
KDC-MP922	K	FL	0	0	1
FX-9000	J	FL	0	1	0
KDC-PSW9524	E	FL	1	0	0
KDC-9023R	M (E)	FL	1	0	1
KDC-X869	K	FL	0	1	1
KDC-8024	E	FL	-	-	-
KDC-MP822	K	LCD	-	0	0
KDC-M7024	E	LCD	-	0	1
FX-5000	J	LCD	-	1	0
KDC-V7022	K	LCD	0	0	0
KDC-X769	K	LCD	0	0	1
KDC-722	K	LCD	0	1	0
KDC-7024 KDC-7024Y	E	LCD	0	1	1
KDC-8023	M (K)	LCD	1	0	0

Note : When FL model using TYPE2, K & J type (with ANT_CON model) : L, E type (without ANT_CON model) : H

Destination(IC2)

	TYPE0	TYPE1
Market model	L	L
Market model CRSC modification	L	H
OEM model CRSC modification	H	L
OEM model CRSC and de-emphasis modification	H	H

③ FPM MOTOR

Slide		FPM mechanism operation
FPM MOTOR B	FPM MOTOR F	
0	0	Standby
1	0	Backward operation
0	1	Forward operation
1	1	Brake

Angle		FPM mechanism operation
FPM MOTOR O	FPM MOTOR C	
0	0	Standby
1	0	Angle open direction
0	1	Angle close direction
1	1	Brake

TEST MODE

● How to enter the test mode

While pressing and holding the Preset 1 and Preset 3 keys, reset the unit.

● How to exit from the test mode

While holding the Preset 6 key, reset the unit.

(Note) The test mode cannot be terminated by reset the unit, ACC OFF, power OFF and Panel detached, momentary power down.

● Initial status in the test mode

- Sources : ALL OFF
- Display : All segments are lit.
- Volume : -10 dB (displayed as "30")
- Loudness : OFF
- CRSC : OFF regardless of the presence of switching function.
- SYSTEM Q : Flat
- WOW : All OFF
- BEEP : When pressing any keys, the buzzer generates a beep at any time.
- AUX : ON
- MENU SYSTEM Q : OFF
- Variable model : Default is white
- Multifunction : Source dependency (Preset, SCAN, etc.)

● Special display in Tuner mode

When any of the following messages is displayed in Tuner mode, the F/E may be abnormal.

- "TNE2P NG" : The EEPROM is set to the default (unstable values) because the F/E was shipped without passing through the adjustment process, etc.
- "TNCON NG" : Communication with the F/E is not possible.

● Forced switching of K3I

Each press of the Preset 6 key in Tuner mode should switch K3I from AUTO → Forced Wide → Forced Middle → Forced Narrow → AUTO.

The initial status is AUTO and the display shows these modes as follows.

- AUTO : FMA
- Forced Wide : FMW
- Forced Middle : FMM
- Forced Narrow : FMN

● Test mode specifications of the CD receiver

- Forced ejection is inhibited in the reset start operation. When the unit is reset while a CD is loaded in it, the CD is not recognized by resetting.
- Each press of the Track Up key jumps to the following track numbers:
No. 9 → No. 15 → No. 10 → No. 11 → No. 12 → No. 13 → No. 22 → No. 14 → No. 9 (The cycle restarts from here.)
- Each press of the Track Down key jumps to the previous track number to the track being played.
- When the number of total tracks of the MP3 disc or the WMA disc is less than 9, 1st track is played.
- When the disc media is CD, A short press of the Preset 1 key jumps to the track number 28.
- When the model is equipped the CD mechanism assembly adapted for MP3 or MP3/WMA disc, the mechanism name and version number are displayed during the FL model is lower stand and Display mode of LCD model is DNPS.

● Audio-related specifications

- Pressing the * key on the remote initiates the audio adjustment mode.
- BL/F key on the Fader initials.
- Continuous holding of a remote control key is inhibited, and workings are short press of any keys.
- Bass, Middle and Treble are adjusted in 3 steps of -8 / 0 / +8 with the Track Up/Down keys (Default value at 0).
- Balance is adjusted in 3 steps of L15 / 0 / R15 with the Track Up/Down keys (Default value at 0).
- Fader is adjusted in 3 steps of R15 / 0 / F15 with the Track Up/Down keys (Default value at 0).
- HPF is adjusted in 2 steps of OFF / 170Hz (or 220Hz) with the Track Up/Down keys (Default value at OFF).
- LPF is adjusted in 2 steps of OFF / 120Hz with the Track Up/Down keys (Default value at OFF).
- Bass f, Bass Q, Bass EXT, Middle f, Middle Q and Treble f are not dealt with by the audio adjust.
- The WOW key pass during the audio adjustment as following steps.

Order	Mod.			Display
	TruBass	FOCUS	SRS	
①	OFF	OFF	OFF	SRS WOW OFF
②	ON	OFF	OFF	SRS TruBass ON
③	OFF	LOW	OFF	FOCUS LOW
④	OFF	HIGH	OFF	FOCUS HIGH
⑤	OFF	OFF	ON	SRS ON
⑥	ON	HIGH	ON	SRS WOW HIGH

TEST MODE

● Menu-related specifications

- A short press of the Q key initiates the menu mode.
- Pressing the DNPP key on the remote initiates the Menu mode.
- Continuous holding of a remote control key is inhibited, and workings are short press of any keys.
- Contrast is adjusted in 3 steps of 0 / 5 / 10 with the Track Up/Down keys (Default value at 5).

● Backup current measurement

When the unit is reset while ACC is OFF (i.e. by turning Backup ON), the MUTE terminal goes OFF in 2 seconds in place of 15 second. (The CD mechanism is not activated at this time.)

● Special display when the display is all on

Pressing the Preset keys while the power is ALL OFF displays the following information.

[PRESET 1]	Version display (8 digits, Month/Day/Hour/Minute) (Display) SYS xxxxxxxx : System microcomputer PAN xxxxxxxx : FL model only MEM xxxxxxxx : 4 contrasts FL model only
[PRESET 2]	Serial number display (8 digits) (Display) SNo xxxxxxxx
[PRESET 3]	Short press : View power ON time. (The All OFF period is not counted.) 2 seconds long press/hold : Clear power ON time at the power ON time displaying. (Display) PonTim xxxxx Max. 60000 (hours)
[PRESET 4]	Short press : Display CD operation time. 2 seconds long press/hold : Clear CD operation time at the CD operation time displaying. (Display) CDTim xxxxx Max. 60000 (hours)
[PRESET 5]	Short press : Display CD ejection count. 2 seconds long press/hold : Clear CD ejection count at the CD ejection count displaying. (Display) EjeCnt xxxxx Max. 60000 (times)
[PRESET 6]	Short press : Display Panel open/close count. 2 seconds long press/hold : Clear Panel open/close count at the Panel open/close count. (Display) PnCnt xxxxx Max. 600000 (times)
FM key	Display ROM collection version. (Display) ROM R xxx Invalid : "R -- --"
AM key	Display panel E2PROM condition. (Display) P-ROM OK (Registered code) P-ROM NG (Code is write in error) P-ROM WAIT (Unregistered code) P-ROM NON (Panel security nonfunctional)

● Panel mechanism

- Auto-panel close inhibition when set-in the CD.
- The panel operation inhibition at power ON/OFF and ACC ON/OFF.
- The panel position changing Eject ↔ Last with a short press of the PLAY/PAUSE keys.

● Other specifications

- No displays such as "CODE OFF/ON" during Power-ON.
- The LINE MUTE inhibition time is one second from 10 seconds when start-up the test mode.
- Do not write the security code with the security jig on the test mode.
- Do not write the serial with the serial writing jig on the test mode.
- OEM display output is not stop if OEM display not connection on the test mode.

● Switching the frequency span (K/M type)

While holding the Preset 1 key and Preset 5 key, reset the unit.

● Response to OEM setting

(Destination of electronic volume setting)

S03F/E models are response to OEM models option at put in μ -com 2 pin.

Its setting are following steps.

IC2 TYPE0 (47 pin)	IC2 TYPE1 (48 pin)	Description
Low	Low	① Trade model (Initial quantify)
Low	High	② Trade model (CRSC change)
High	Low	③ OEM model-ready CRSC change
High	High	④ OEM model-ready CRSC & de-emphasis change

● Security-related information

1. Forced Power ON mode (All models)

Even when the security (Cord) is approved, resetting the unit while holding the Q and Preset 4 keys makes it possible to turn the power ON for 30 minutes.

After 30 minutes have elapsed, it is not possible to return to the previous condition unless the unit is reset again. (Security code is do not clear at this mode. Put the power on fill-in.)

TEST MODE

2. Method of registration of the security code after EEPROM (F/E) replacement (Code security model)

- 1) Enter the test mode. (See How to enter the test mode)
- 2) Press the MENU key to enter the Menu mode.
- 3) When the message "Security" is displayed, press and hold the Track Up/Down key for 1 second to enter the security registration mode.
- 4) Enter the code using the FM/AM/Track Up/Track Down keys.
 FM key : Number up
 AM key : Number down
 Track Up key : Cursor right shift
 Track Down key : Cursor left shift
- 5) Hold down the Track Up key for at least 3 seconds and the message, "RE-ENTER" appears, so once again enter the code according to Step 4 above.
- 6) Press and hold the Track Up key for 3 seconds until "AP-PROVED" is displayed.
- 7) Exit from the test mode. (See 2. How to exit from the test mode)
 (Note 1) All Clear is not applicable to the security code of this model.
 (Note 2) When the F/E changed, need re-inscription because the panel security is clear.

3. Simple way to clear the security code (K type only)

- 1) During code request mode, press the Track UP key for at least 3 seconds while holding down the AUTO key. (--- will disappear)
- 2) Enter, "KCAR" with the remote controller as described below.
 - Press the remote controller 5 key twice, and press the Track Up key. (Enters a "K")
 - Press the remote controller 2 key three times, and press the Track Up key. (Enters a "C")
 - Press the remote controller 2 key once, and press the Track Up key. (Enters an "A")
 - Press the remote controller 7 key twice, and press the Track Up key. (Enters an "R")
- 3) Security function is canceled and unit sets to All-Off mode.
- 4) Code request mode appears if a mistake was made in entering the numbers.

4. How to inscription the panel security code

- 1) Enter the test mode.
- 2) Pressing the AM key on all lighting, check the "P-ROM WAIT" display.
- 3) The NEXT key is long press 2 seconds, writing the code.
- 4) Display is "P-ROM OK".
- 5) Exit from the test mode.
 (Note) E2PROM connection is NG when display is "P-ROM NG", so detach the panel and rewrite after the display is "P-ROM WAIT". This code can not clear.

● Check the SRAM

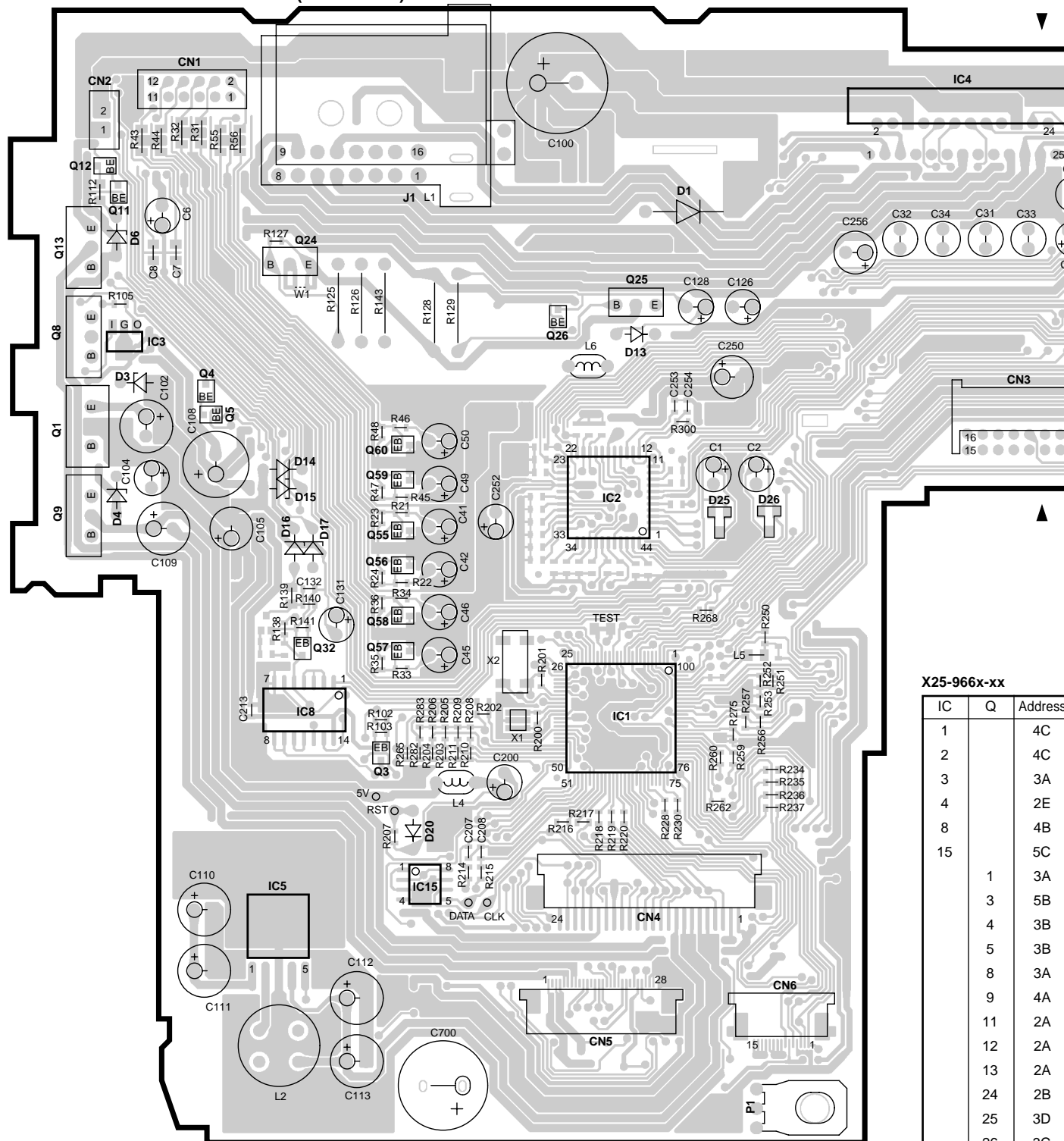
Output (Hi) to the SRAM_CHECK terminal on 101 pin when SRAM is function properly on the panel of 4 gradation FL models.

● Check the Flash ROM

- 1) Display to the following effect at ALL OFF by assortment system computer and panel for cover the customization model attach the panel with no Flash ROM.
 - Customization system computer + Flash ROM panel : All lighting
 - Non customization system computer + Non Flash ROM panel : All lighting
 - Customization system computer + Non Flash ROM panel : Panel NG
 - Non customization system computer + Flash ROM panel : Panel NG
- 2) Output (Hi) to the FLASHROM_CHECK terminal on 102 pin when Flash ROM is function properly.
- 3) Flash ROM data is initialized when pressing the AM key long hold at all lighting.
 Display is "Data Erase" in data erasing mode. Do not touch anything this mode. When the data erase completed, display is "Erase OK!!".
 If display is "Erase NG!!!!!!", Flash ROM data unable erase for some kind or another factors.
 When same effect as pressing the AM key long hold and data erase once again, Flash ROM is defective.

PC BOARD (COMPONENT SIDE VIEW)

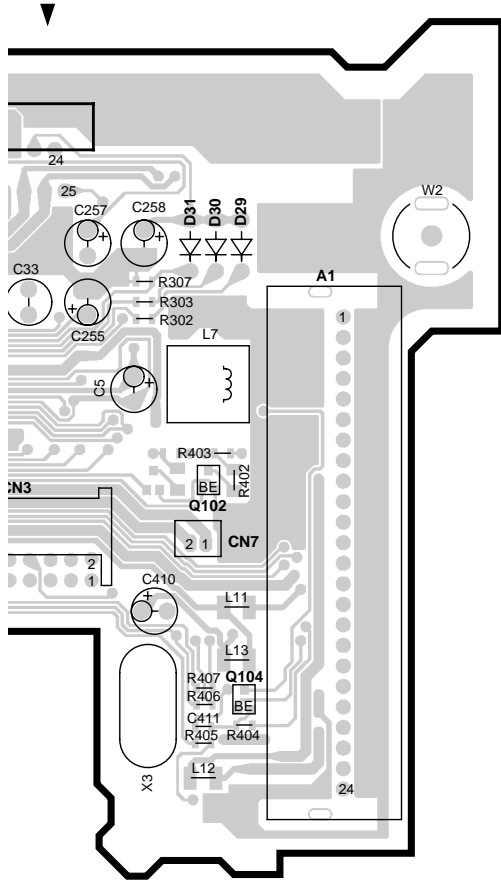
ELECTRIC UNIT X25-966x-xx (J74-1474-12)



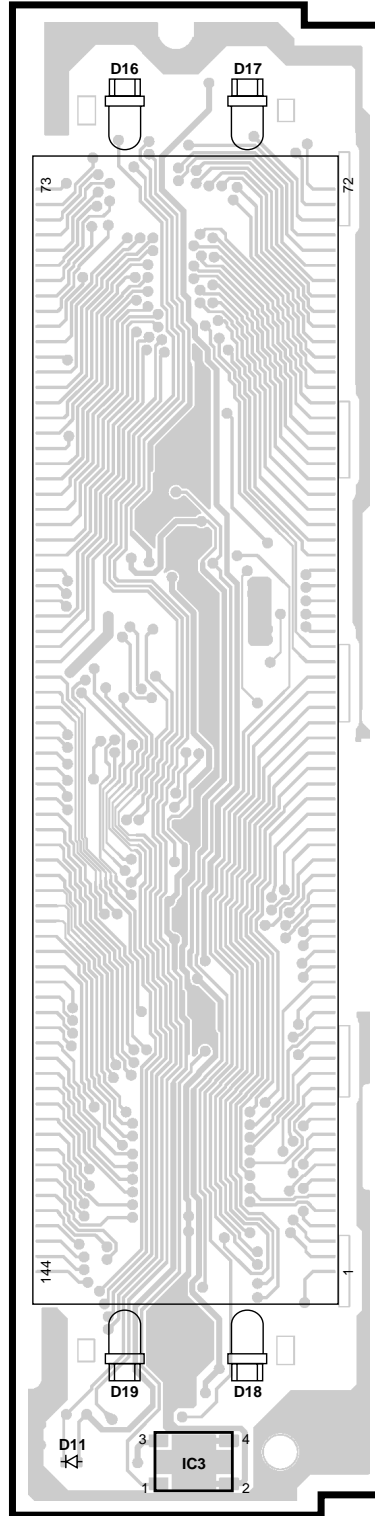
X25-966x-xx

IC	Q	Address
1		4C
2		4C
3		3A
4		2E
8		4B
15		5C
	1	3A
	3	5B
	4	3B
	5	3B
	8	3A
	9	4A
	11	2A
	12	2A
	13	2A
	24	2B
	25	3D
	26	3C
	32	4B
	55	4B
	56	4B
	59	3B
	60	3F
	102	3F
	104	4F

Refer to the schematic diagram for the values of resistors and capacitors.



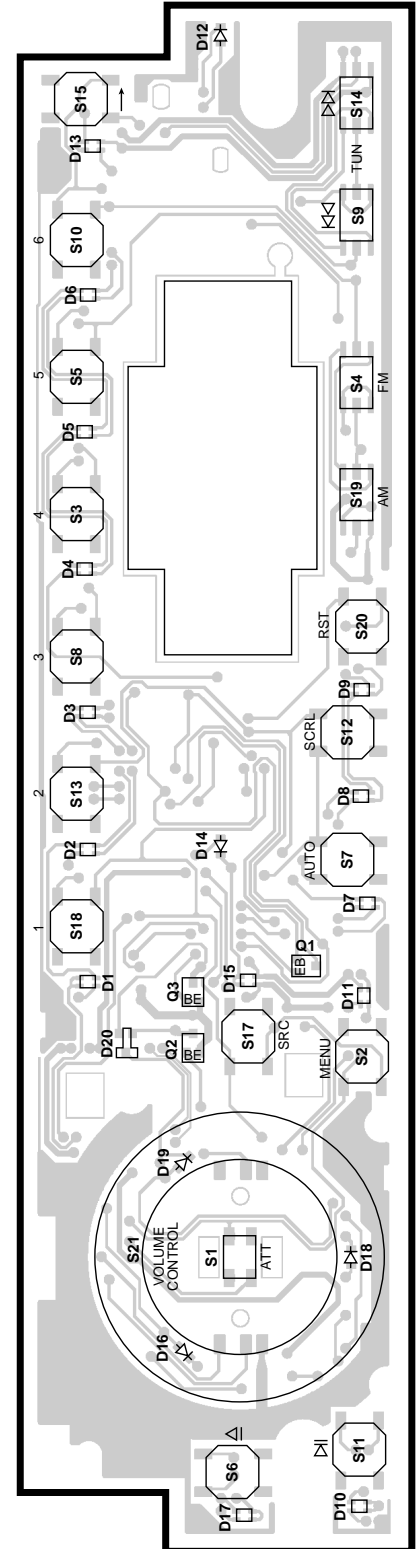
SUB-CIRCUIT UNIT
X16-2140-10 (J74-1479-02)



X16-2140-10

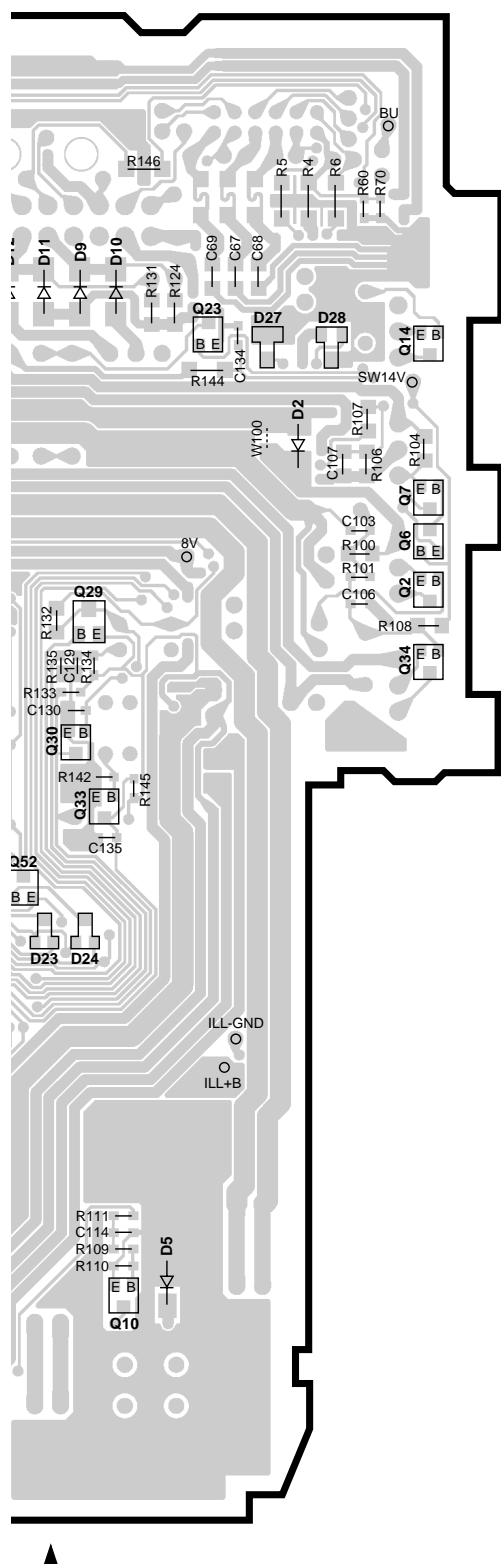
IC	Address
3	6H

SWITCH UNIT
X16-2190-10 (J74-1484-12)

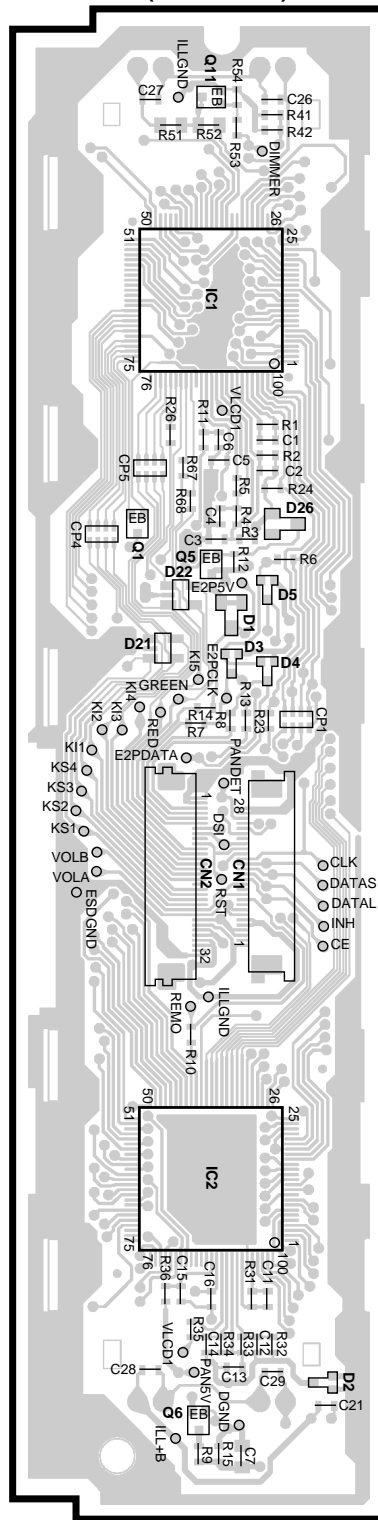


X16-2190-10

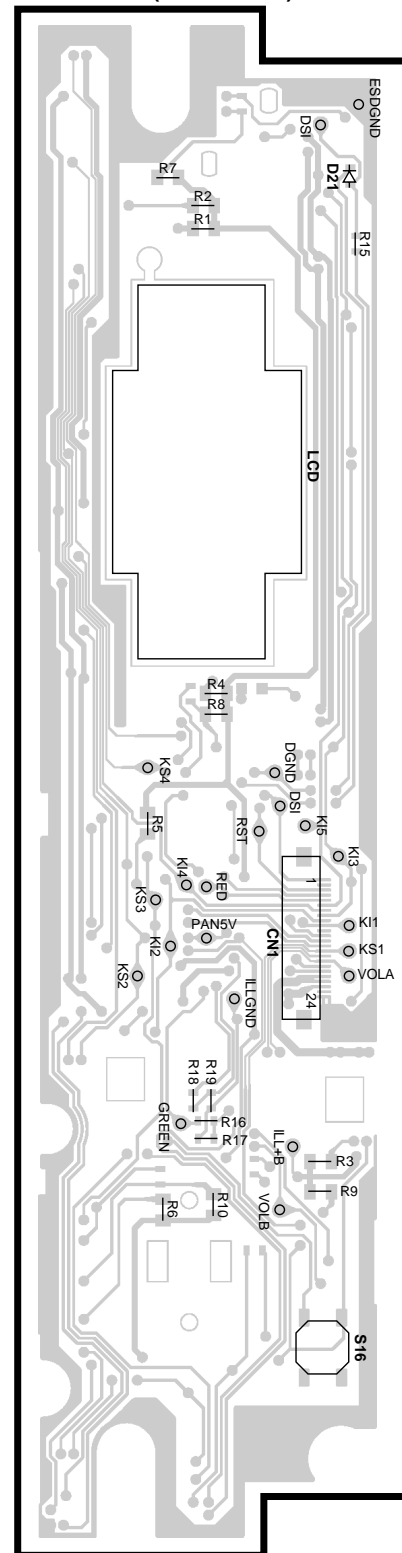
Q	Address
1	5J



SUB-CIRCUIT UNIT
X16-2140-10 (J74-1479-02)



SWITCH UNIT
X16-2190-10 (J74-1484-12)



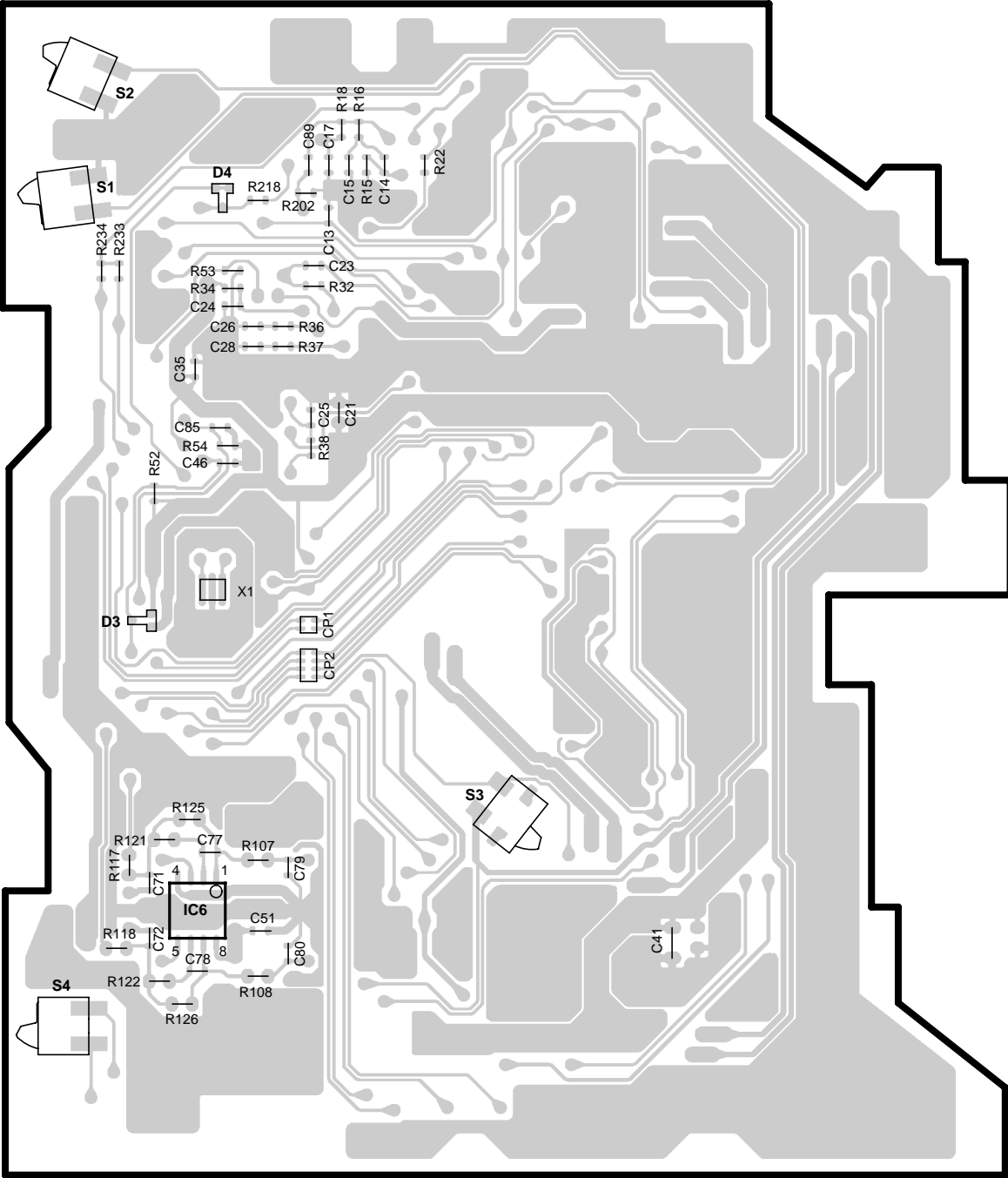
Refer to the schematic diagram for the values of resistors and capacitors.

X16-2140-10

IC	Q	Address	IC	Q	Address
1		2R	5		3R
2		5R	6		6R
	1	3R	11		2R

PC BOARD (COMPONENT SIDE VIEW)

CD PLAYER UNIT X32-5200-00 (J74-1243-02/1245-02)



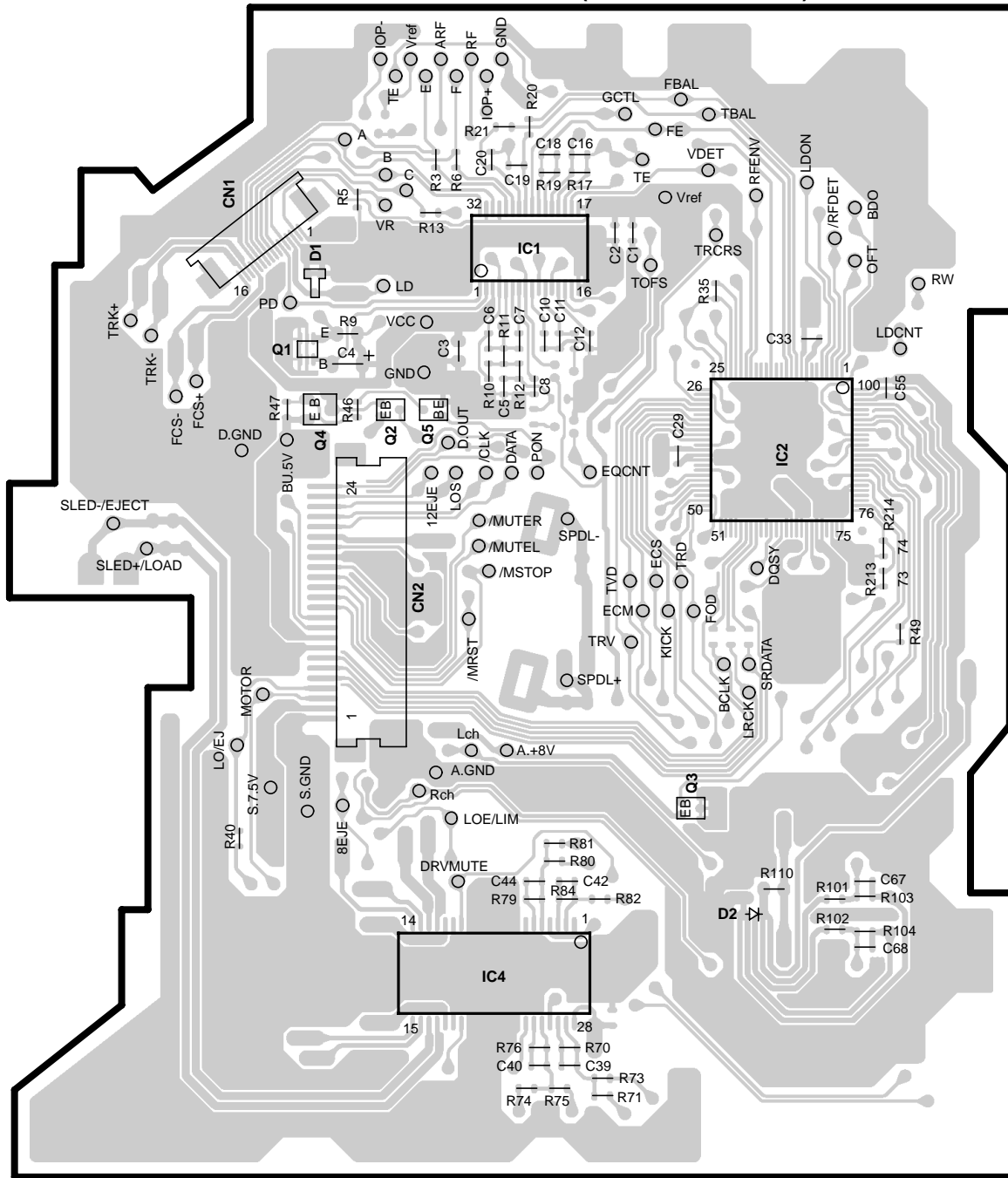
X32-5200-00

IC	Address
6	5V

Refer to the schematic diagram for the values of resistors and capacitors.

PC BOARD (FOIL SIDE VIEW)

CD PLAYER UNIT X32-5200-00 (J74-1243-02/1245-02)



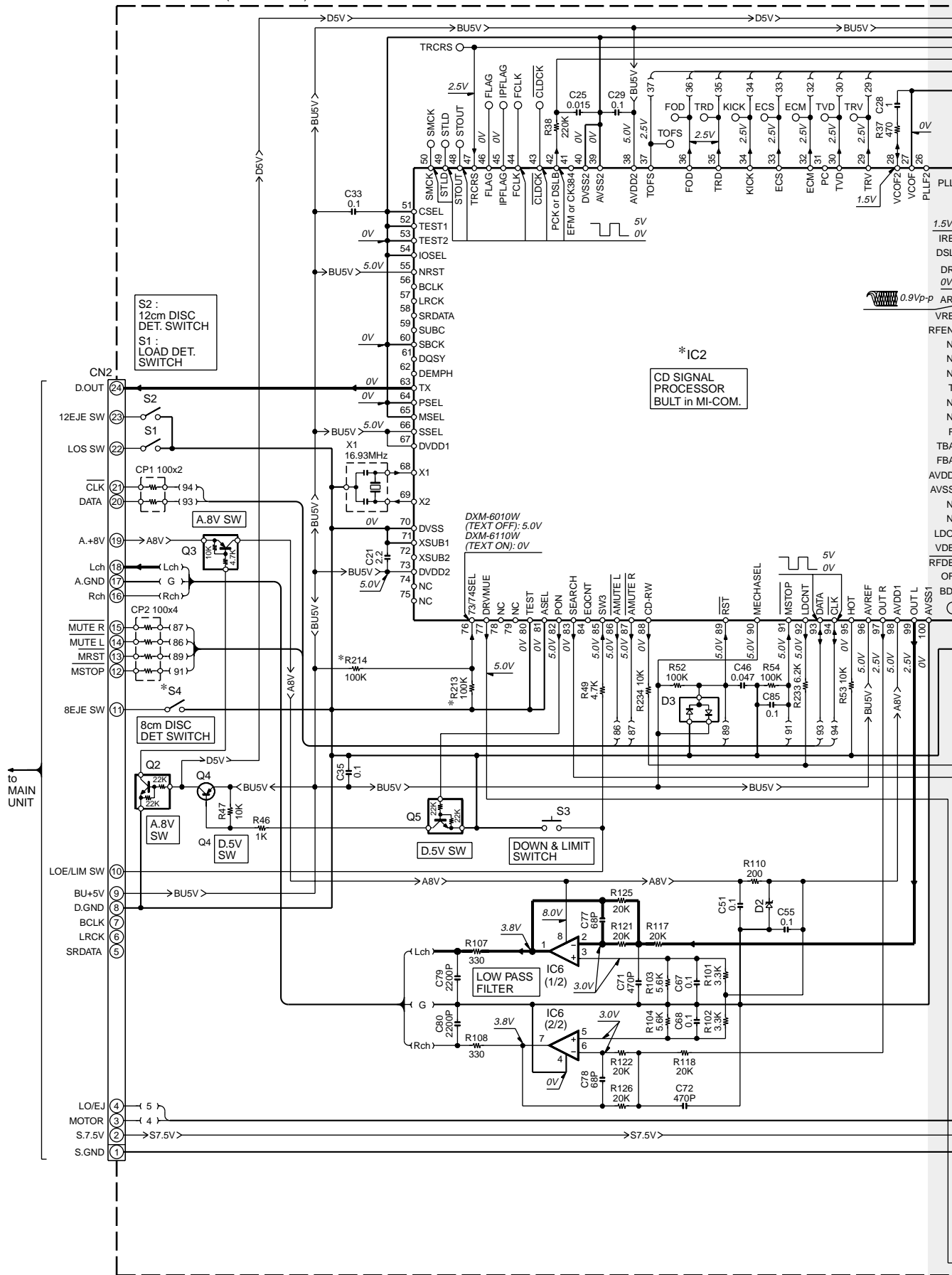
X32-5200-00

IC	Q	Address	IC	Q	Address
1		2AB	2		3AA
2		3AC	3		4AB
4		5AB	4		3AA
	1	3AA	5		3AA

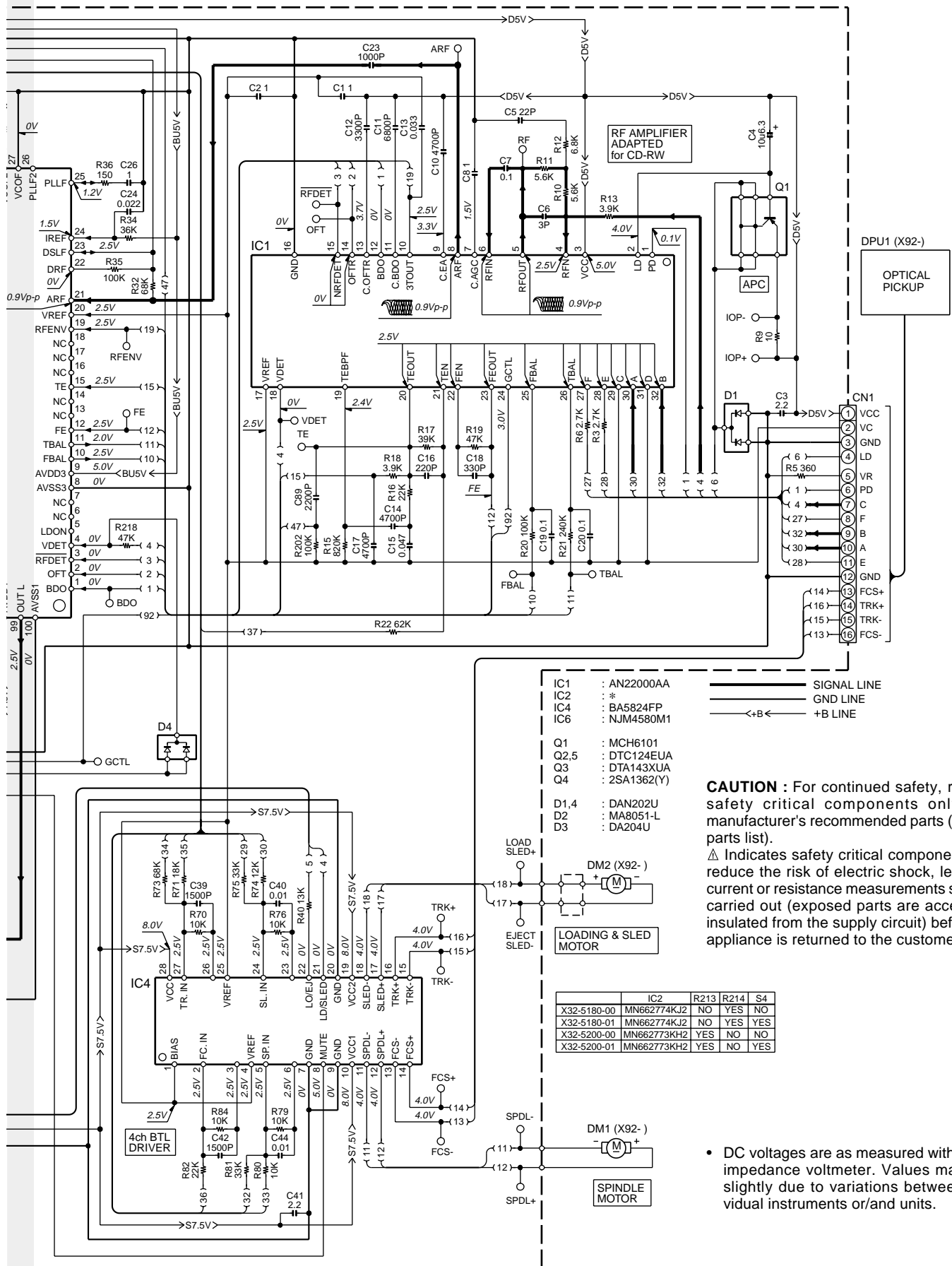
Refer to the schematic diagram for the values of resistors and capacitors.

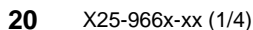
KDC-7024/Y,722,8023

CD PLAYER UNIT (X32-5200-00)



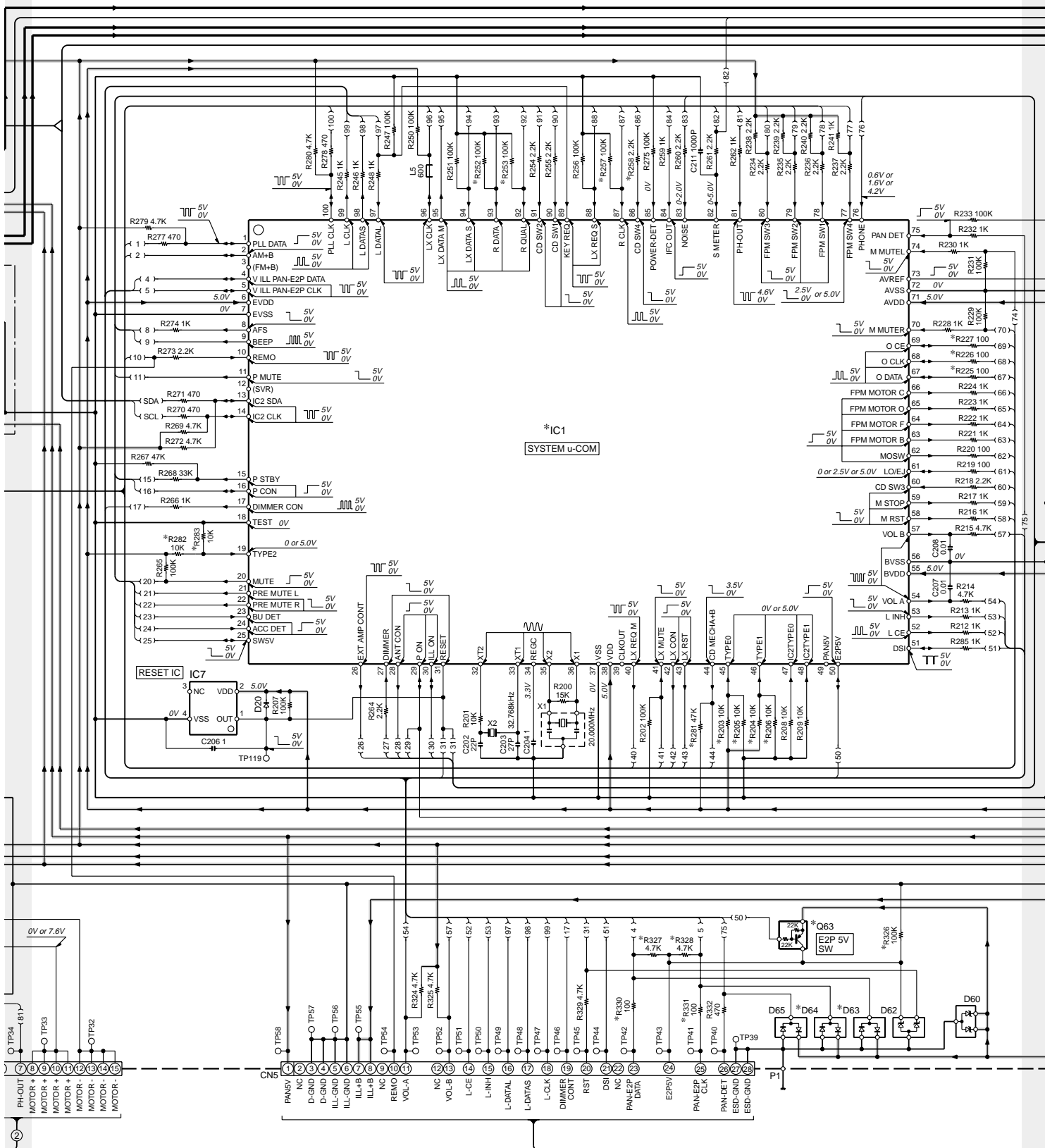
KDC-7024/Y,722,8023




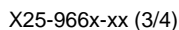


(X25-966X-XX)

MODEL NAME	UNIT No.	A	B	C	D	E	F	G	A1	C23, 24	C67	C68	C100	C127	C129	D15	D54, 55	D63, 64	IC1	Q28	Q63	R134	R135	R146	R147	R203,225-227, 308-311	R204	R205,252, 253,257	R206	R258, 320	R281	R282	R283	R326-328, 330,331	W1	
FX-5000	0-01	YES	YES	YES	YES	NO	NO	NO	X86-3730-01	YES	NO	NO	3900u16	1u6.3	YES	YES	NO	NO	UPD703030GC014	DTA114EUA	YES	100K	47K	YES	YES	NO	YES	YES	NO	YES	YES	NO	NO	NO	NO	NO
KDC-MP822	0-10	YES	NO	YES	NO	YES	YES	NO	X86-3730-11	NO	YES	YES	2200u16	0.068u16	NO	NO	NO	YES	UPD703030GC015	DTA124EUA	YES	NO	100K	NO	NO	NO	NO	YES	YES	NO	YES	YES	NO	NO	YES	NO
KDC-V7022	0-11	NO	YES	YES	NO	YES	NO	NO	X86-3730-11	NO	YES	NO	2200u16	0.068u16	NO	NO	NO	YES	UPD703030GC015	DTA124EUA	YES	NO	100K	NO	NO	NO	NO	NO	YES	YES	NO	NO	NO	YES	YES	NO
KDC-7022	0-12	NO	NO	YES	NO	YES	NO	NO	X86-3730-11	NO	YES	NO	2200u16	0.068u16	NO	NO	NO	YES	UPD703030GC015	DTA124EUA	YES	NO	100K	NO	NO	NO	NO	NO	YES	YES	NO	NO	NO	YES	YES	NO
KDC-8023	0-21	NO	YES	YES	YES	YES	NO	NO	X86-3730-11	YES	YES	NO	2200u16	0.068u16	NO	NO	NO	YES	UPD703030GC015	DTA124EUA	YES	NO	100K	YES	NO	NO	NO	NO	YES	YES	NO	NO	NO	YES	YES	NO
KDC-M7024	2-71	YES	NO	NO	YES	YES	NO	YES	X86-3732-70	YES	YES	NO	3900u16	0.068u16	YES	YES	YES	YES	UPD703030GC014	DTA124EUA	YES	47K	22K	YES	YES	YES	YES	YES	YES	YES	YES	YES	YES	YES	YES	YES
KDC-7024/Y	2-72	NO	NO	NO	YES	YES	NO	YES	X86-3732-70	YES	YES	NO	3900u16	0.068u16	YES	YES	YES	YES	UPD703030GC015	DTA124EUA	YES	47K	22K	YES	YES	YES	YES	YES	YES	YES	YES	YES	YES	YES	YES	YES




 SIGNAL LINE
 GND LINE
 +B LINE

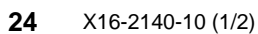


1

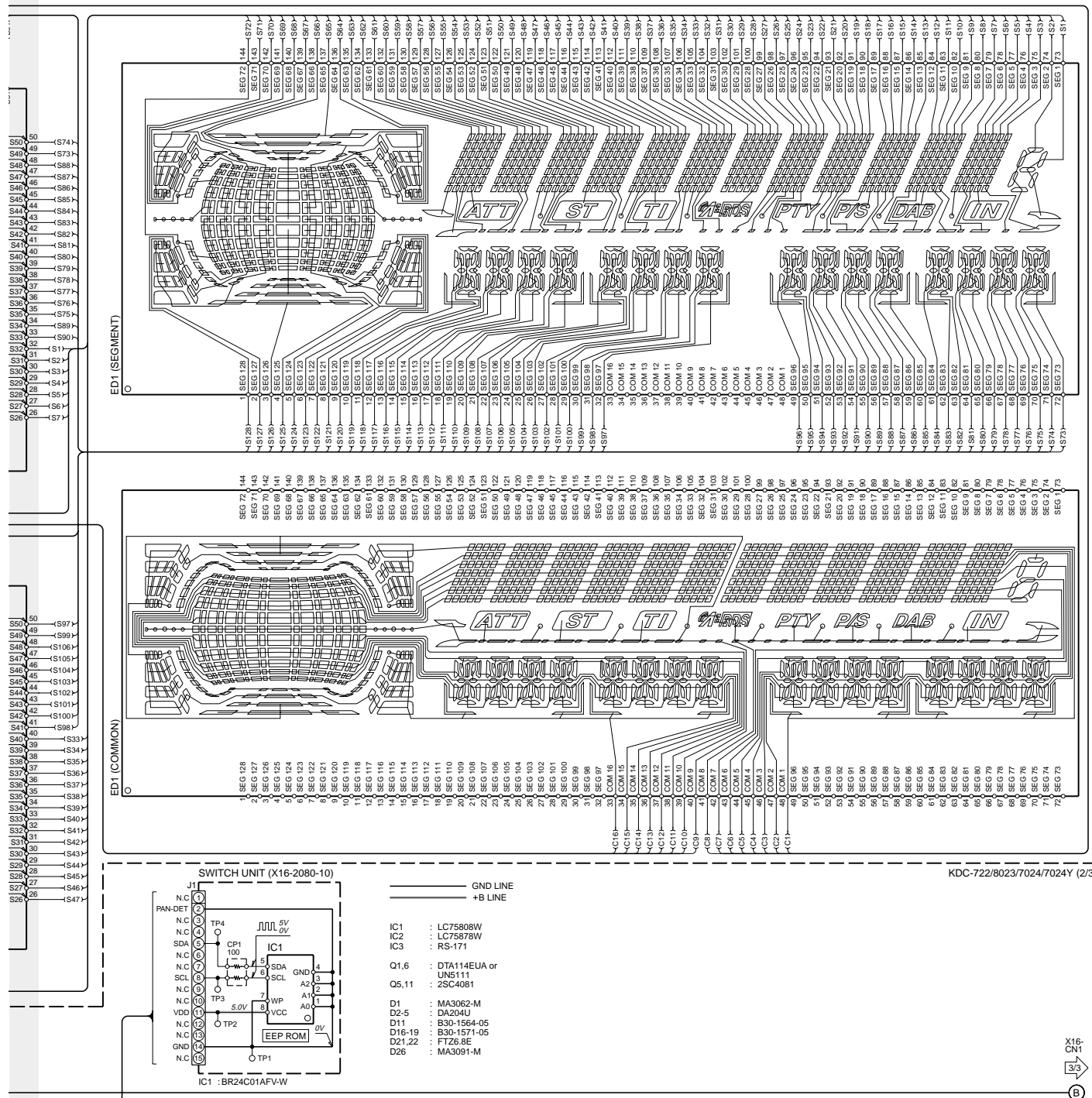


23

7



KDC-7024/Y,722,8023



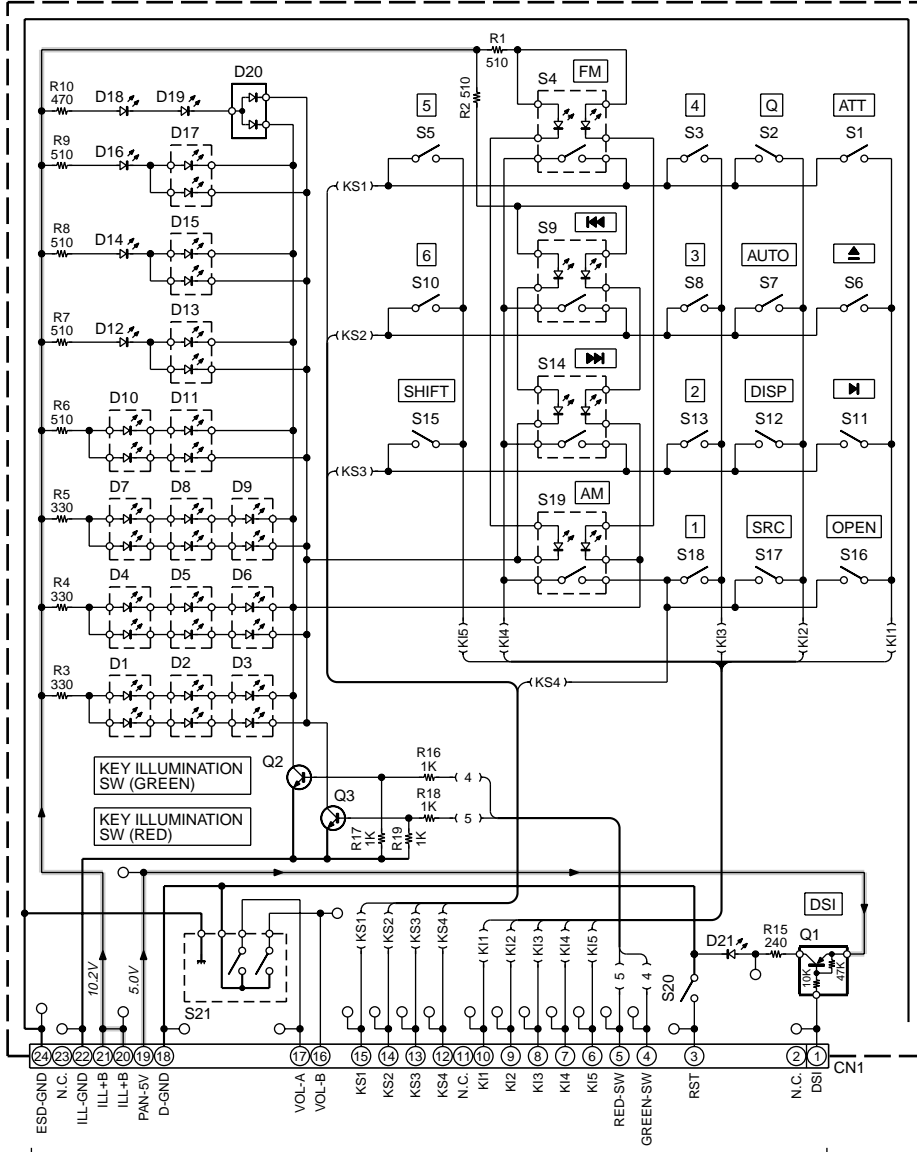
CAUTION : For continued safety, replace safety critical components only with manufacturer's recommended parts (refer to parts list).

⚠ Indicates safety critical components. To reduce the risk of electric shock, leakage-current or resistance measurements shall be carried out (exposed parts are acceptably insulated from the supply circuit) before the appliance is returned to the customer.

- DC voltages are as measured with a high impedance voltmeter. Values may vary slightly due to variations between individual instruments or/and units.

KDC-7024/Y,722,8023

SWITCH UNIT (X16-2190-10)



X16-
CN2
2/3
B

— GND LINE
- - - +B LINE

Q1 : DTA114YUA or
UN5114
Q2,3 : 2SC4081
D1-11,13,15,17 : B30-1605-05
D12,14,16,18,19,21 : B30-1566-05
D20 : DAP202U or
MA142WA

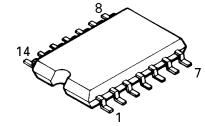
KDC-722 (3/3)
KDC-8023 (3/3)
KDC-7024 (3/3)
KDC-7024Y (3/3)

DTA123JK
DTC114YUA
DTC143TUA
UN5111
UN5114
UN5213
UN5214
UN5216
2SA1362
2SA1576A

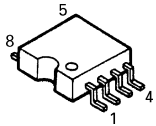
RD6.8M



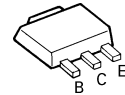
TC74HC02AF



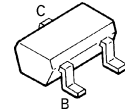
BR24C01AF-W



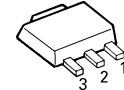
2SB1188



2SC4081

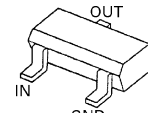
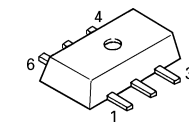


M5237ML

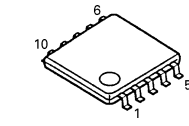


DTA114EUA
DTA124EUA
DTC124EUA
DTC144EUA

MCH6101



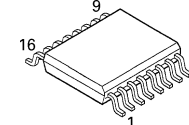
LB1930M



DAN202U



TDA7479D



DAP202U
DA204U
DTA114YUA



MA142WA
UN5212

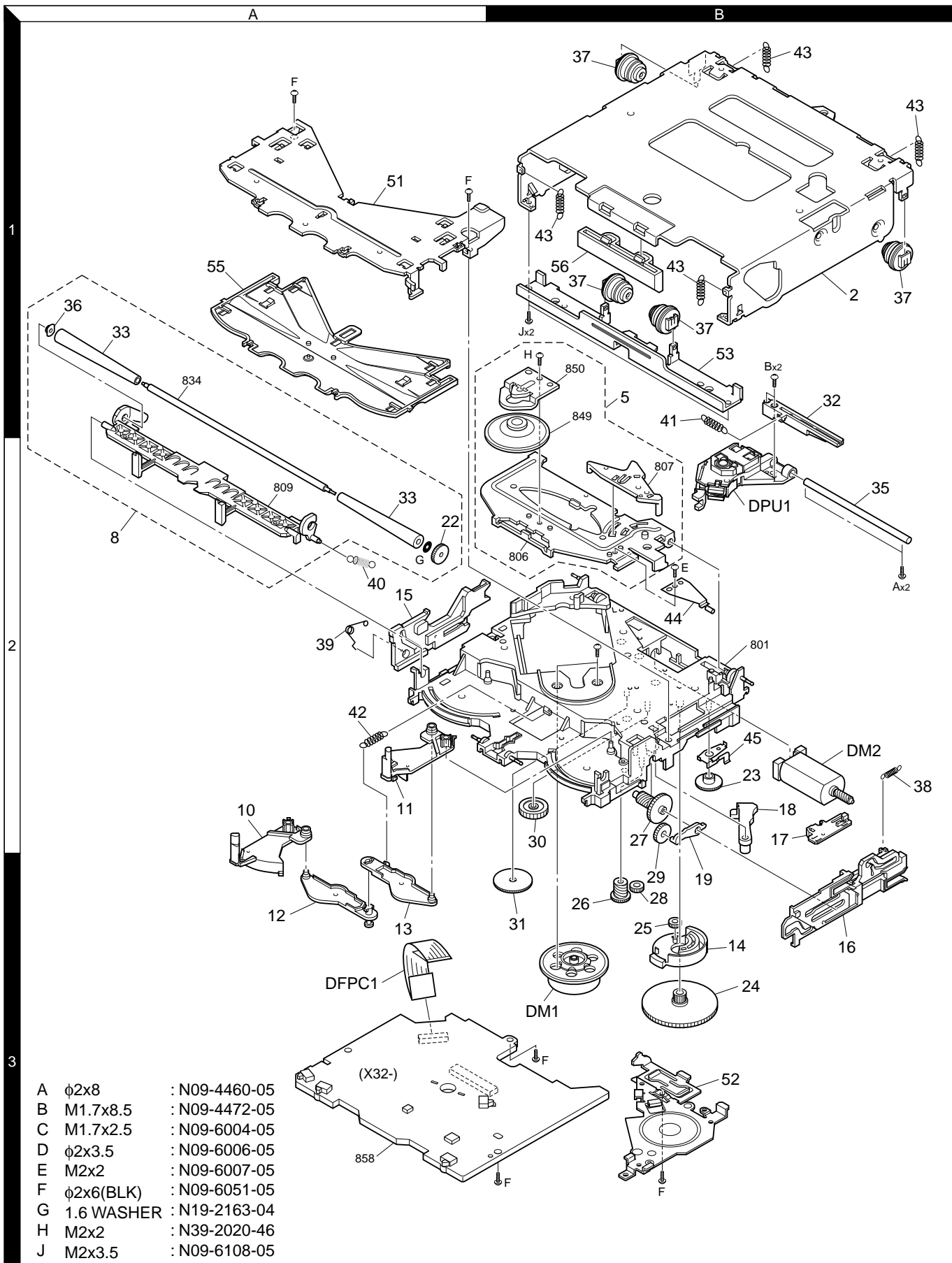


CAUTION : For continued safety, replace safety critical components only with manufacturer's recommended parts (refer to parts list).

⚠ Indicates safety critical components. To reduce the risk of electric shock, leakage-current or resistance measurements shall be carried out (exposed parts are acceptably insulated from the supply circuit) before the appliance is returned to the customer.

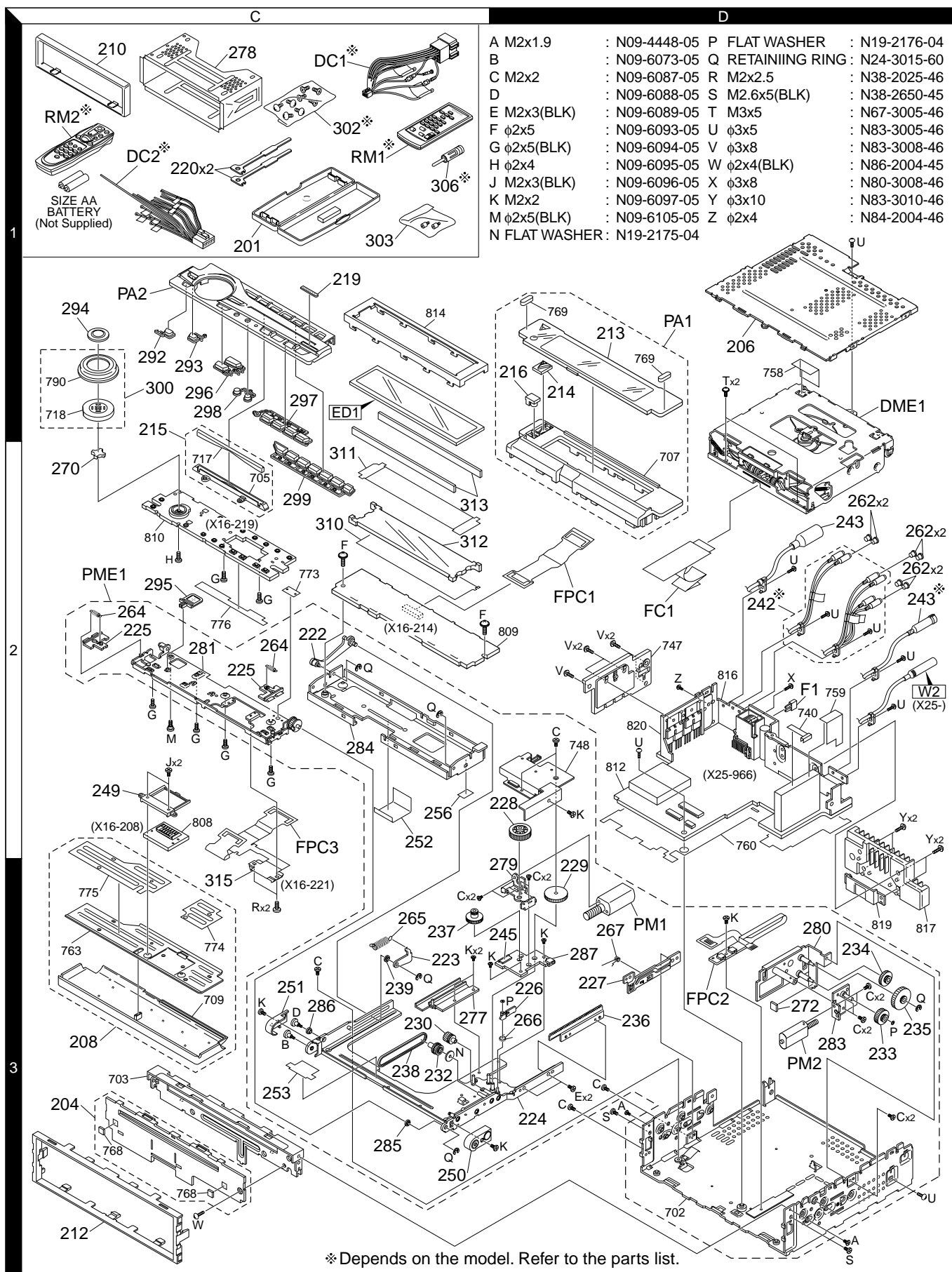
- DC voltages are as measured with a high impedance voltmeter. Values may vary slightly due to variations between individual instruments or/and units.

EXPLODED VIEW (MECHANISM)



- | | | |
|---|------------|---------------|
| A | φ2x8 | : N09-4460-05 |
| B | M1.7x8.5 | : N09-4472-05 |
| C | M1.7x2.5 | : N09-6004-05 |
| D | φ2x3.5 | : N09-6006-05 |
| E | M2x2 | : N09-6007-05 |
| F | φ2x6(BLK) | : N09-6051-05 |
| G | 1.6 WASHER | : N19-2163-04 |
| H | M2x2 | : N39-2020-46 |
| J | M2x3.5 | : N09-6108-05 |

EXPLODED VIEW (UNIT)



PARTS LIST

* New parts

Parts without **Parts No.** are not supplied.Les articles non mentionnés dans le **Parts No.** ne sont pas fournis.Teile ohne **Parts No.** werden nicht geliefert.

Ref. No.	A d d	N e w	Parts No.	Description	Desti- nation	Ref. No.	A d d	N e w	Parts No.	Description	Desti- nation
KDC-7024/Y,722,8023						242			E30-6212-05	CORD WITH PINPLUG (2PR+1AUX)	M2
201	1C	*	A02-2731-03	PLASTIC CABINET ASSY		242	2D	*	E30-6213-05	CORD WITH PINPLUG (2PR)	K6E4E5
204	3C	*	A22-2988-03	SUB PANEL ASSY		243	2D	*	E30-6216-05	CORD WITH DIN CONNECTOR (CH)	K6M2
206	1D	*	A52-0831-02	TOP PLATE		243	2D		E30-6217-05	CORD WITH DIN CONNECTOR (CH+DIS)	E4E5
PA1	1D	*	A64-2981-01	PANEL ASSY	K6	245	3D	*	E41-0351-05	FLAT CABLE CONNECTOR	
PA1	1D	*	A64-2983-01	PANEL ASSY	M2	△ DC1	1C		E30-4942-05	DC CORD (ISO)	E4E5
PA1	1D	*	A64-2987-01	PANEL ASSY	E4E5	△ DC2	1C		E30-6062-05	DC CORD	M2
PA2	1C		A64-2995-02	PANEL ASSY	K6M2	△ DC2	1C		E30-6106-05	DC CORD	K6
PA2	1C		A64-3003-02	PANEL ASSY	E4E5	FC1	2D	*	E39-0565-05	FLAT CABLE	
PME1	2C	*	A10-5029-11	CHASSIS ASSY		249	2C	*	F07-1121-03	COVER	
RM1	1C		A70-2026-05	REMOTE CONTROLLER ASSY (RC-420)	M2	250	3C	*	F07-1122-03	COVER	
RM2	1C		A70-2040-05	REMOTE CONTROLLER ASSY (RC-505)	K6	251	3C	*	F07-1123-03	COVER	
-			B46-0100-50	WARRANTY CARD	K6M2E4	252	2C	*	F09-1794-04	SHEET	
-			B46-0606-04	ID CARD	K6	253	3C	*	F09-1798-04	SHEET	
-			B46-0612-14	ID CARD	M2E4E5	256	2D	*	F09-1842-04	SHEET	
-		*	B46-0653-03	USER CARD	K6	262	2D		F29-0049-05	INSULATING COVER	
-			B64-2460-00	INSTRUCTION MANUAL (ENGLISH)	K6	△ F1	2D		F52-0006-05	FUSE (MINI BLADE TYPE)	
-		*	B64-2461-10	INSTRUCTION MANUAL (FRE.SPA.)	K6	264	2C	*	G01-3162-04	EXTENSION SPRING	
-		*	B64-2463-00	INSTRUCTION MANUAL (ENG.T-CHI.)	M2	265	3C	*	G01-3188-04	EXTENSION SPRING	
-			B64-2468-00	INSTRUCTION MANUAL (ENGLISH)	E4E5	266	3C	*	G01-3189-04	TORSION COIL SPRING	
-			B64-2469-00	INSTRUCTI.MANUAL (FRE.GER.DUT.)	E4	267	3D	*	G01-3199-04	TORSION COIL SPRING	
-			B64-2470-00	INSTRUCTI.MANUAL (ITA.SPA.POR.)	E4	270	2C	*	G11-3539-04	CUSHION (VOL)	
-		*	B64-2471-00	INSTRUCTION MANUAL (RUS.POL.)	E5	272	3D	*	G11-3559-04	CUSHION	
-		*	B64-2472-00	INSTRUCTI.MANUAL (CZE.HUN.CRO.)	E5	-		*	H10-4854-12	POLYSTYRENE FOAMED FIXTURE	
-		*	B64-2473-00	INSTRUCTION MANUAL (SWE.FIN.)	E5	-		*	H21-1151-04	PROTECTION SHEET	
208	3C		B03-5015-03	DRESSING PLATE ASSY		-			H25-0329-04	PROTECTION BAG (280X450X0.03)	K6M2
210	1C	*	B07-3078-01	ESCUTCHEON		-			H25-0337-04	PROTECTION BAG (180X300X0.03)	E4E5
212	3C	*	B07-3080-02	ESCUTCHEON		-		*	H25-1111-04	PROTECTION BAG (280X450X0.03)	
213	1D	*	B10-4388-01	FRONT GLASS	K6	-		*	H54-2721-03	ITEM CARTON CASE	K6
213	1D	*	B10-4390-01	FRONT GLASS	M2	-		*	H54-2723-03	ITEM CARTON CASE	M2
213	1D	*	B10-4394-01	FRONT GLASS	E4E5	-		*	H54-2727-03	ITEM CARTON CASE	E4
214	1C	*	B12-1221-04	INDICATOR		-		*	H54-2728-03	ITEM CARTON CASE	E5
215	1C	*	B12-1222-03	INDICATOR ASSY		277	3C	*	J19-5220-03	HOLDER	
216	1C	*	B19-2201-04	LIGHTING BOARD		278	1C		J21-9823-03	MOUNTING HARDWARE ASSY	
219	1C	*	B43-1505-04	KENWOOD BADGE		279	3D	*	J21-9951-03	MOUNTING HARDWARE ASSY	
220	1C		D10-4674-04	LEVER		280	3D	*	J21-9954-02	MOUNTING HARDWARE ASSY	
222	2C	*	D10-4716-04	ARM ASSY		281	2C	*	J21-9956-12	MOUNTING HARDWARE ASSY	
223	3C	*	D10-4718-04	ARM ASSY		283	3D	*	J21-9997-03	MOUNTING HARDWARE ASSY	
224	3D	*	D10-4721-11	SLIDER ASSY		284	2C	*	J21-9999-02	MOUNTING HARDWARE ASSY	
225	2C	*	D10-4749-03	LEVER		285	3C	*	J31-1055-04	COLLAR	
226	3D	*	D10-4750-04	LEVER		286	3C	*	J31-1056-04	COLLAR	
227	3D	*	D12-0637-03	CAM		287	3D	*	J74-1444-04	RIGID PRINTED WIRING BOARD	
228	2D	*	D13-2270-04	GEAR		FPC1	2D	*	J84-0153-05	FLEXIBLE PRINTED WIRING BOARD	
229	3D	*	D13-2272-04	GEAR		FPC2	3D	*	J84-0156-04	FLEXIBLE PRINTED WIRING BOARD	
230	3C	*	D13-2273-14	GEAR		292	1C	*	K24-4004-04	KNOB (PLAY)	
232	3C	*	D13-2274-14	GEAR		293	1C	*	K24-4005-04	KNOB (EJECT)	
233	3D	*	D13-2276-04	GEAR		294	1C	*	K24-4006-04	KNOB (ATT)	
234	3D	*	D13-2277-04	GEAR		295	2C	*	K24-4007-04	KNOB (OPEN)	
235	3D	*	D13-2278-04	GEAR		296	1C	*	K25-1527-03	KNOB (SRC,Q)	
236	3D	*	D13-2289-03	RACK (GEAR)		297	1C	*	K25-1529-03	KNOB (AM/FM)	
237	3C	*	D13-2290-04	GEAR ASSY		298	1C	*	K25-1530-04	KNOB (SCRL)	
238	3C	*	D16-0617-05	BELT		299	2C	*	K25-1528-03	KNOB (1-6)	
239	3C	*	D23-0958-04	RETAINER		300	1C	*	K29-7031-03	KNOB ASSY (VOL)	

E : Europe K : North America K6 : KDC-722 E4 : KDC-7024
M : Other Areas W : Without Europe M2 : KDC-8023 E5 : KDC-7024Y

△ Indicates safety critical components.

PARTS LIST

* New parts
Parts without **Parts No.** are not supplied.
Les articles non mentionnes dans le **Parts No.** ne sont pas fournis.
Teile ohne **Parts No.** werden nicht geliefert.

KDC-7024/Y,722,8023

Ref. No.	A d d	N e w	Parts No.	Description	Desti- nation
302	1C		N99-1723-05	SCREW SET	K6M2
303	1C	*	N99-1734-05	SCREW SET	
A	3D		N09-4448-05	MACHINE SCREW	
B	3C	*	N09-6073-05	STEPPED SCREW	
C	3D	*	N09-6087-05	MACHINE SCREW	
D	3C	*	N09-6088-05	STEPPED SCREW	
E	3D	*	N09-6089-05	MACHINE SCREW	
F	2C	*	N09-6093-05	TAPTITE SCREW	
G	2C	*	N09-6094-05	MACHINE SCREW	
H	2C	*	N09-6095-05	MACHINE SCREW	
J	2C	*	N09-6096-05	MACHINE SCREW	E4E5
K	3C	*	N09-6097-05	MACHINE SCREW	
M	2C	*	N09-6105-05	STEPPED SCREW	
N	2C	*	N19-2175-04	FLAT WASHER	
P	3D	*	N19-2176-04	FLAT WASHER	
Q	2C	*	N24-3015-60	E TYPE RETAINING RING	
R	3C		N38-2025-46	PAN HEAD MACHIN SCREW	
S	3D		N38-2650-45	PAN HEAD MACHIN SCREW	
T	2D		N67-3005-46	PAN HEAD SEMS SCREW	
U	2D		N83-3005-46	PAN HEAD TAPTITE SCREW	
V	2D		N83-3008-46	PAN HEAD TAPTITE SCREW	
W	3C		N86-2004-45	BINDING HEAD TAPTITE SCREW	
RLED			RK73GB2A102J	CHIP R 1.0K J 1/10W	
RPH			RK73GB2A104J	CHIP R 100K J 1/10W	
SW1			S68-0871-05	PUSH SWITCH (PANEL MECHA)	
SW2-3			S68-0863-05	PUSH SWITCH (PANEL MECHA)	
SW4			S68-0864-05	PUSH SWITCH (PANEL MECHA)	
306	1C		T90-0552-05	ANTENNA ADAPTOR	
PH			T95-0212-05	OPTO ISOLATOR (PANEL MECHA)	
PM1	3D	*	T42-1076-14	MOTOR ASSY	
PM2	3D	*	T42-1077-04	MOTOR ASSY	
DME1	2D		X92-4450-01	CD MECHANISM ASSY	
SUB-CIRCUIT UNIT (X16-2080-10)					
J1			E59-0833-15	RECTANGULAR PLUG	
CP1			R90-1019-05	MULTI-COMP 100 X2	
IC1		*	BR24C01AFV-W	MEMORY IC	
SUB-CIRCUIT UNIT (X16-2140-10)					
310	2C	*	B11-1405-04	REFLECTION SHEET	
311	2C	*	B11-1406-04	OPTICAL DIFFUSER	
312	2C	*	B19-2204-02	LIGHTING BOARD	
D11			B30-1564-05	LED (1608, BLUE)	
D16-19			B30-1571-05	LED (WHITE)	
ED1		*	B38-1119-05	LIQUID CRYSTAL	
C1			CC73GCH1H681J	CHIP C 680PF J	
C2-5			CK73GB1C104K	CHIP C 0.10UF K	
C2-5			CK73GB1H104K	CHIP C 0.10UF K	
C6			CK73GB1H103K	CHIP C 0.010UF K	
C7			CK73FB1A225K	CHIP C 2.2UF K	
C11			CC73GCH1H681J	CHIP C 680PF J	
C12-14			CK73GB1C104K	CHIP C 0.10UF K	

Ref. No.	Add	New	Parts No.	Description	Destination			
C12-14 C15 C16 C16 C21	2C	*	CK73GB1H104K CK73GB1H103K CK73GB1C104K CK73GB1H104K CK73GB1H103K	CHIP C 0.10UF K CHIP C 0.010UF K CHIP C 0.10UF K CHIP C 0.10UF K CHIP C 0.010UF K				
C26-29			CK73GB1H103K	CHIP C 0.010UF K				
313 CN1 CN2			E29-1930-04 E40-9364-05 E41-0166-05	CONDUCTIVE RUBBER FLAT CABLE CONNECTOR FLAT CABLE CONNECTOR				
CP1 CP4,5 R1			R90-1016-05 R90-0724-05 RK73GB2A433J	MULTI-COMP 470 X4 MULTI-COMP 1K X4 CHIP R 43K J 1/10W				
R2-5 R6			RK73GB2A222J RK73GB2A392J	CHIP R 2.2K J 1/10W CHIP R 3.9K J 1/10W				
R7,8 R9 R10 R11 R12			RK73GB2A331J RK73GB2A101J RK73GB2A102J RK73GB2A4R7J RK73GB2A751J	CHIP R 330 J 1/10W CHIP R 100 J 1/10W CHIP R 1.0K J 1/10W CHIP R 4.7 J 1/10W CHIP R 750 J 1/10W				
R13 R14 R15 R23 R24			RK73GB2A102J RK73GB2A4R7J RK73GB2A104J RK73GB2A102J RK73GB2A473J	CHIP R 1.0K J 1/10W CHIP R 4.7 J 1/10W CHIP R 100K J 1/10W CHIP R 1.0K J 1/10W CHIP R 47K J 1/10W				
R26 R31 R32-35 R36 R41,42			RK73GB2A102J RK73GB2A433J RK73GB2A222J RK73GB2A4R7J RK73GB2A122J	CHIP R 1.0K J 1/10W CHIP R 43K J 1/10W CHIP R 2.2K J 1/10W CHIP R 4.7 J 1/10W CHIP R 1.2K J 1/10W				
R51,52 R53,54 R67,68			RK73FB2B271J RK73GB2A472J RK73GB2A331J	CHIP R 270 J 1/8W CHIP R 4.7K J 1/10W CHIP R 330 J 1/10W				
D1 D2-5 D21,22 D26 IC1			MA3062-M DA204U FTZ6.8E MA3091-M LC75808W	ZENER DIODE DIODE ZENER DIODE ZENER DIODE MOS-IC				
IC2 IC3 Q1 Q1 Q5			LC75878W RS-171 DTA114EUA UN5111 2SC4081	MOS-IC ANALOGUE IC DIGITAL TRANSISTOR DIGITAL TRANSISTOR TRANSISTOR				
Q6 Q6 Q11			DTA114EUA UN5111 2SC4081	DIGITAL TRANSISTOR DIGITAL TRANSISTOR TRANSISTOR				
SWITCH UNIT (X16-2190-10)								
D1-11 D12 D13 D14 D15						B30-1605-05 B30-1566-05 B30-1605-05 B30-1566-05 B30-1605-05	LED (2COLOR PG/RED) LED (1608, RED) LED (2COLOR PG/RED) LED (1608, RED) LED (2COLOR PG/RED)	
D16 D17						B30-1566-05 B30-1605-05	LED (1608, RED) LED (2COLOR PG/RED)	

E : Europe K : North America K6 : KDC-722 E4 : KDC-7024
M : Other Areas W : Without Europe M2 : KDC-8023 E5 : KDC-7024Y

△ Indicates safety critical components.

PARTS LIST

* New parts

Parts without **Parts No.** are not supplied.Les articles non mentionnés dans le **Parts No.** ne sont pas fournis.Teile ohne **Parts No.** werden nicht geliefert.

SWITCH UNIT (X16-2190-10)

Ref. No.	Added	New	Parts No.	Description	Destination
D18,19 D21			B30-1566-05 B30-1566-05	LED (1608, RED) LED (1608, RED)	
CN1		*	E41-0419-05	FLAT CABLE CONNECTOR	
R1,2 R3-5 R6-9 R10 R15			RK73FB2B511J RK73FB2B331J RK73FB2B511J RK73FB2B471J RK73GB2A241J	CHIP R 510 J 1/8W CHIP R 330 J 1/8W CHIP R 510 J 1/8W CHIP R 470 J 1/8W CHIP R 240 J 1/10W	
R16-19			RK73GB2A102J	CHIP R 1.0K J 1/10W	
S1 S2,3 S4 S5-8 S9		*	S70-0901-05 S70-0864-05 S70-0856-05 S70-0864-05 S70-0856-05	TACT SWITCH TACT SWITCH TACT SWITCH TACT SWITCH TACT SWITCH	
S10-13 S14 S15-18 S19 S20			S70-0864-05 S70-0856-05 S70-0864-05 S70-0856-05 S70-0864-05	TACT SWITCH TACT SWITCH TACT SWITCH TACT SWITCH TACT SWITCH	
S21		*	T99-0445-05	ROTARY ENCODER	
D20 D20 Q1 Q1 Q2,3			DAP202U MA142WA DTA114YUA UN5114 2SC4081	DIODE DIODE DIGITAL TRANSISTOR DIGITAL TRANSISTOR TRANSISTOR	
SUB-CIRCUIT UNIT (X16-2210-10)					
315	2C	*	E58-0968-05	RECTANGULAR RECEPTACLE	
FPC3	2C	*	J84-0154-05	FLEXIBLE PRINTED WIRING BOARD	
ELECTRIC UNIT (X25-966x-xx)					
C1,2 C3,4 C5 C5,6 C7,8			CE04NW1HR47M CK73FB1C474K CE04NW0J470M CE04NW0J470M CK73FB1C474K	ELECTRO 0.47UF 50WV CHIP C 0.47UF K ELECTRO 47UF 6.3WV ELECTRO 47UF 6.3WV CHIP C 0.47UF K	K6E4E5 M2 M2
C9 C10 C11 C11 C12			CK73GB1A474K CC73GCH1H151J CK73GB1E223K CK73GB1H223K CK73GB1H103K	CHIP C 0.47UF K CHIP C 150PF J CHIP C 0.022UF K CHIP C 0.022UF K CHIP C 0.010UF K	
C13-16 C21-24 C21,22 C31-34 C41,42			CK73FB1H104K CK73FB1C105K CK73FB1C105K C90-5296-05 CE04NW1V3R3M	CHIP C 0.10UF K CHIP C 1.0UF K CHIP C 1.0UF K NP-ELECT 0.22UF 50WV ELECTRO 3.3UF 35WV	M2E4E5 K6
C49,50 C67 C69 C70,71 C71			CE04NW1V3R3M CK73FB1H104K CK73FB1H104K CK73GB1H103K CK73GB1H103K	ELECTRO 3.3UF 35WV CHIP C 0.10UF K CHIP C 0.10UF K CHIP C 0.010UF K CHIP C 0.010UF K	M2 K6E4E5
C100 C100			C90-5235-05 C90-5484-05	ELECTRO 2200UF 16WV ELECTRO 3900UF 16WV	K6M2 E4E5

Ref. No.	Added	New	Parts No.	Description	Destination
C101 C102 C103 C104 C105			CK73GB1H103K C90-2866-05 CK73GB1H103K CE04NW1C100M CE04NW0J101M	CHIP C 0.010UF K ELECTRO 220UF 16WV CHIP C 0.010UF K ELECTRO 10UF 16WV ELECTRO 100UF 6.3WV	
C106 C107 C108 C109 C126			CK73GB1A474K CK73FB1C105K CE04CW1A221M CE04CW1A101M CE04NW1V3R3M	CHIP C 0.47UF K CHIP C 1.0UF K ELECTRO 220UF 10WV ELECTRO 100UF 10WV ELECTRO 3.3UF 35WV	
C127 C127 C128 C129 C130			CK73GB1C683K CK73GB1H683K CE04NW1H0R1M CK73GB1H103K CK73GB1E223K	CHIP C 0.068UF K CHIP C 0.068UF K ELECTRO 0.1UF 50WV CHIP C 0.010UF K CHIP C 0.022UF K	E4E5
C130 C131 C132 C134,135 C200			CK73GB1H223K CE04NW1H010M CK73GB1H102K CK73GB1H103K CE04NW0J470M	CHIP C 0.022UF K ELECTRO 1.0UF 50WV CHIP C 1000PF K CHIP C 0.010UF K ELECTRO 47UF 6.3WV	
C201 C202 C203 C204 C206			CK73GB1H103K CC73GCH1H220J CC73GCH1H270J CK73GB0J105K CK73GB0J105K	CHIP C 0.010UF K CHIP C 22PF J CHIP C 27PF J CHIP C 1.0UF K CHIP C 1.0UF K	
C207,208 C211 C213 C250 C251			CK73GB1H103K CK73GB1H102K CK73GB1H103K CE04NW1C470M CK73GB1H103K	CHIP C 0.010UF K CHIP C 1000PF K CHIP C 0.010UF K ELECTRO 47UF 16WV CHIP C 0.010UF K	
C252 C252 C253,254 C253,254 C255			CE04MW1H2R2M CE04NW1H2R2M CK73GB1C104K CK73GB1H104K CE04NW1H010M	ELECTRO 2.2UF 50WV ELECTRO 2.2UF 50WV CHIP C 0.10UF K CHIP C 0.10UF K ELECTRO 1.0UF 50WV	E4E5 K6M2
C256 C257 C258 C259-262 C401			CE04NW1C330M C90-2935-05 CE04NW1H010M CK73GB1A224K CK73GB1H103K	ELECTRO 33UF 16WV ELECTRO 1.0UF 50WV ELECTRO 1.0UF 50WV CHIP C 0.22UF K CHIP C 0.010UF K	
C403 C405 C407 C408 C409			CK73GB1H103K CK73GB1H103K CK73GB1H103K CK73FB1A225K CK73GB1H103K	CHIP C 0.010UF K CHIP C 0.010UF K CHIP C 0.010UF K CHIP C 2.2UF K CHIP C 0.010UF K	E4E5 E4E5
C410 C411 C412,413			CE04NW1C100M CC73GCH1H331J CC73GCH1H100D	ELECTRO 10UF 16WV CHIP C 330PF J CHIP C 10PF D	E4E5 E4E5 E4E5
CN1 CN2 CN3 CN4 CN4 CN5		*	E41-0224-05 E40-3237-05 E41-0384-05 E40-9527-05 E41-0213-05 E40-9368-05	PIN ASSY PIN ASSY PIN ASSY FLAT CABLE CONNECTOR FLAT CABLE CONNECTOR FLAT CABLE CONNECTOR	

E : Europe K : North America K6 : KDC-722 E4 : KDC-7024
M : Other Areas W : Without Europe M2 : KDC-8023 E5 : KDC-7024Y

△ Indicates safety critical components.

PARTS LIST

* New parts

Parts without **Parts No.** are not supplied.Les articles non mentionnés dans le **Parts No.** ne sont pas fournis.Teile ohne **Parts No.** werden nicht geliefert.

ELECTRIC UNIT (X25-966x-xx)

Ref. No.	Ad	New	Parts No.	Description	Destination
CN6		*	E41-0399-05	FLAT CABLE CONNECTOR	
CN7			E41-0009-05	PIN ASSY	
J1			E58-0863-15	RECTANGULAR RECEPTACLE	
W2		*	E30-6218-05	CORD WITH PLUG	
L1			L33-1170-05	CHOKE COIL ASSY	
L4			L40-4795-91	SMALL FIXED INDUCTOR (4.7UH,J)	
L5			L92-0075-05	CHIP FERRITE	
L6			L40-4795-91	SMALL FIXED INDUCTOR (4.7UH,J)	
L7			L33-1039-05	LINE FILTER COIL	
L11-13			L40-4795-34	SMALL FIXED INDUCTOR	E4E5
L11-13			L40-4795-68	SMALL FIXED INDUCTOR (4.7UH)	E4E5
L11,12			L40-4795-34	SMALL FIXED INDUCTOR	K6M2
L11,12			L40-4795-68	SMALL FIXED INDUCTOR (4.7UH)	K6M2
X1			L78-0821-05	RESONATOR	
X2			L77-2738-05	CRYSTAL RESONATOR	
X3			L77-2002-05	CRYSTAL RESONATOR	E4E5
U	2D		N83-3005-46	PAN HEAD TAPTITE SCREW	
X	2D		N80-3008-46	PAN HEAD TAPTITE SCREW	
Y	2D		N83-3010-46	PAN HEAD TAPTITE SCREW	
Z	2D		N84-2004-46	PAN HEAD TAPTITE SCREW	
R1,2			RK73EB2E100J	CHIP R 10 J 1/4W	
R3			RK73EB2E4R7J	CHIP R 4.7 J 1/4W	K6E4E5
R3,4			RK73EB2E4R7J	CHIP R 4.7 J 1/4W	M2
R5,6			RK73EB2E100J	CHIP R 10 J 1/4W	M2
R7			RK73GB2A472J	CHIP R 4.7K J 1/10W	
R8			RK73GB2A103J	CHIP R 10K J 1/10W	
R9,10			RK73FB2B333J	CHIP R 33K J 1/8W	
R21,22			RK73GB2A361J	CHIP R 360 J 1/10W	
R23,24			RK73GB2A223J	CHIP R 22K J 1/10W	
R31,32			RK73EB2E181J	CHIP R 180 J 1/4W	
R45,46			RK73GB2A361J	CHIP R 360 J 1/10W	
R47,48			RK73GB2A223J	CHIP R 22K J 1/10W	
R55,56			RK73EB2E181J	CHIP R 180 J 1/4W	
R60,61			RK73GB2A102J	CHIP R 1.0K J 1/10W	M2
R61			RK73GB2A102J	CHIP R 1.0K J 1/10W	K6E4E5
R100			RK73FB2B223J	CHIP R 22K J 1/8W	
R101			RK73GB2A101J	CHIP R 100 J 1/10W	
R102			RK73GB2A222J	CHIP R 2.2K J 1/10W	
R103			RK73GB2A223J	CHIP R 22K J 1/10W	
R104			RK73FB2B221J	CHIP R 220 J 1/8W	
R105			RK73GB2A153J	CHIP R 15K J 1/10W	
R106			R92-3047-05	CHIP R 24K D 1/10W	
R107			R92-3032-05	CHIP R 4.3K D 1/10W	
R108			RK73FB2B152J	CHIP R 1.5K J 1/8W	
R112			RK73FB2B152J	CHIP R 1.5K J 1/8W	
R124			RK73FB2B472J	CHIP R 4.7K J 1/8W	
R125,126			RD14DB2H102J	SMALL-RD 1.0K J 1/2W	K6M2
R127			RK73GB2A223J	CHIP R 22K J 1/10W	K6M2
R128,129			RD14DB2H102J	SMALL-RD 1.0K J 1/2W	
R130			RK73GB2A223J	CHIP R 22K J 1/10W	
R131			RK73FB2B472J	CHIP R 4.7K J 1/8W	
R132			RK73FB2B561J	CHIP R 560 J 1/8W	M2E4E5
R133			RK73GB2A104J	CHIP R 100K J 1/10W	
R134			RK73GB2A473J	CHIP R 47K J 1/10W	E4E5

Ref. No.	Ad	New	Parts No.	Description	Destination
R135			RK73GB2A104J	CHIP R 100K J 1/10W	K6M2
R135			RK73GB2A223J	CHIP R 22K J 1/10W	E4E5
R138			RK73GB2A223J	CHIP R 22K J 1/10W	
R139			RK73FB2B103J	CHIP R 10K J 1/8W	
R140			RK73GB2A103J	CHIP R 10K J 1/10W	
R141			RK73GB2A822J	CHIP R 8.2K J 1/10W	
R142			RK73GB2A183J	CHIP R 18K J 1/10W	
R143			RD14DB2H332J	SMALL-RD 3.3K J 1/2W	
R144			RK73EB2E473J	CHIP R 47K J 1/4W	
R145			RK73GB2A104J	CHIP R 100K J 1/10W	
R146			RK73EB2E102J	CHIP R 1.0K J 1/4W	M2E4E5
R147,148			RK73EB2E103J	CHIP R 10K J 1/4W	E4E5
R148			RK73EB2E103J	CHIP R 10K J 1/4W	K6M2
R200			RK73GB2A153J	CHIP R 15K J 1/10W	
R201			RK73GB2A103J	CHIP R 10K J 1/10W	
R202			RK73GB2A104J	CHIP R 100K J 1/10W	
R203,204			RK73GB2A103J	CHIP R 10K J 1/10W	E4E5
R204,205			RK73GB2A103J	CHIP R 10K J 1/10W	K6
R205,206			RK73GB2A103J	CHIP R 10K J 1/10W	M2
R207			RK73GB2A104J	CHIP R 100K J 1/10W	
R208,209			RK73GB2A103J	CHIP R 10K J 1/10W	
R212,213			RK73GB2A102J	CHIP R 1.0K J 1/10W	
R214,215			RK73GB2A472J	CHIP R 4.7K J 1/10W	
R216,217			RK73GB2A102J	CHIP R 1.0K J 1/10W	
R218			RK73GB2A222J	CHIP R 2.2K J 1/10W	
R219,220			RK73GB2A101J	CHIP R 100 J 1/10W	
R221-224			RK73GB2A102J	CHIP R 1.0K J 1/10W	E4E5
R225-227			RK73GB2A101J	CHIP R 100 J 1/10W	
R228			RK73GB2A102J	CHIP R 1.0K J 1/10W	
R229			RK73GB2A104J	CHIP R 100K J 1/10W	
R230			RK73GB2A102J	CHIP R 1.0K J 1/10W	
R231			RK73GB2A104J	CHIP R 100K J 1/10W	
R232			RK73GB2A102J	CHIP R 1.0K J 1/10W	
R233			RK73GB2A104J	CHIP R 100K J 1/10W	
R234-240			RK73GB2A222J	CHIP R 2.2K J 1/10W	
R241			RK73GB2A102J	CHIP R 1.0K J 1/10W	
R245,246			RK73GB2A102J	CHIP R 1.0K J 1/10W	
R247			RK73GB2A104J	CHIP R 100K J 1/10W	
R248			RK73GB2A102J	CHIP R 1.0K J 1/10W	
R250-253			RK73GB2A104J	CHIP R 100K J 1/10W	K6M2
R250,251			RK73GB2A104J	CHIP R 100K J 1/10W	E4E5
R254,255			RK73GB2A222J	CHIP R 2.2K J 1/10W	
R256			RK73GB2A104J	CHIP R 100K J 1/10W	E4E5
R256,257			RK73GB2A104J	CHIP R 100K J 1/10W	K6M2
R259			RK73GB2A102J	CHIP R 1.0K J 1/10W	
R260,261			RK73GB2A222J	CHIP R 2.2K J 1/10W	
R262			RK73GB2A102J	CHIP R 1.0K J 1/10W	
R264			RK73GB2A222J	CHIP R 2.2K J 1/10W	
R265			RK73GB2A104J	CHIP R 100K J 1/10W	
R266			RK73GB2A102J	CHIP R 1.0K J 1/10W	
R267			RK73GB2A473J	CHIP R 47K J 1/10W	
R268			RK73GB2A333J	CHIP R 33K J 1/10W	
R269			RK73GB2A472J	CHIP R 4.7K J 1/10W	
R270,271			RK73GB2A471J	CHIP R 470 J 1/10W	
R272			RK73GB2A472J	CHIP R 4.7K J 1/10W	

E : Europe K : North America
M : Other Areas W : Without EuropeK6 : KDC-722 E4 : KDC-7024
M2 : KDC-8023 E5 : KDC-7024Y

△ Indicates safety critical components.

PARTS LIST

* New parts

Parts without **Parts No.** are not supplied.Les articles non mentionnés dans le **Parts No.** ne sont pas fournis.Teile ohne **Parts No.** werden nicht geliefert.

ELECTRIC UNIT (X25-966x-xx)

Ref. No.	A d d	N e w	Parts No.	Description	Desti- nation	Ref. No.	A d d	N e w	Parts No.	Description	Desti- nation
R273			RK73GB2A222J	CHIP R 2.2K J 1/10W		D52-55			MA3062WA	ZENER DIODE	E4E5
R274			RK73GB2A102J	CHIP R 1.0K J 1/10W		D52,53			MA3062WA	ZENER DIODE	K6M2
R275			RK73GB2A104J	CHIP R 100K J 1/10W		D60			MA3062WA	ZENER DIODE	
R277,278			RK73GB2A471J	CHIP R 470 J 1/10W		D62			MA3062WA	ZENER DIODE	
R279,280			RK73GB2A472J	CHIP R 4.7K J 1/10W		D63-65			DA204U	DIODE	
R282			RK73GB2A103J	CHIP R 10K J 1/10W	M2	D66			IMSA-6801	SURGE ABSORBER	
R283			RK73GB2A103J	CHIP R 10K J 1/10W	K6E4E5	IC1		*	UPD703030GC015	MI-COM IC	
R285			RK73GB2A102J	CHIP R 1.0K J 1/10W		IC2			TDA7411	ANALOGUE IC	
R300,301			RK73GB2A472J	CHIP R 4.7K J 1/10W		IC3			M5237ML	ANALOGUE IC	
R302			RK73GB2A221J	CHIP R 220 J 1/10W		IC4			TDA7560	ANALOGUE IC	
R303			RK73GB2A223J	CHIP R 22K J 1/10W		IC7			S-80837CNNB	MOS-IC	E4E5
R305			RK73GB2A432J	CHIP R 4.3K J 1/10W		IC8			TC74HC02AF	MOS-IC	
R306			RK73GB2A100J	CHIP R 10 J 1/10W		IC12			TDA7479D	ANALOGUE IC	
R307			RK73GB2A622J	CHIP R 6.2K J 1/10W		IC13,14			LB1930M	ANALOGUE IC	
R308			RK73EB2E102J	CHIP R 1.0K J 1/4W	E4E5	IC15			BR24C01AF-W	ROM IC	
R309-311			RK73EB2E471J	CHIP R 470 J 1/4W	E4E5	Q1			2SA2057	TRANSISTOR	
R312			RK73EB2E101J	CHIP R 100 J 1/4W		Q2			2SC4081	TRANSISTOR	
R313-317			RK73EB2E472J	CHIP R 4.7K J 1/4W		Q3			2SA1576A	TRANSISTOR	
R318,319			RK73EB2E101J	CHIP R 100 J 1/4W		Q4			DTA124EUA	DIGITAL TRANSISTOR	
R321-323			RK73GB2A222J	CHIP R 2.2K J 1/10W		Q4			UN5112	DIGITAL TRANSISTOR	
R324,325			RK73GB2A472J	CHIP R 4.7K J 1/10W		Q5			DTC124EUA	DIGITAL TRANSISTOR	
R326			RK73GB2A104J	CHIP R 100K J 1/10W		Q5			UN5212	DIGITAL TRANSISTOR	
R327,328			RK73GB2A472J	CHIP R 4.7K J 1/10W		Q6			DTC144EUA	DIGITAL TRANSISTOR	
R329			RK73EB2E472J	CHIP R 4.7K J 1/4W		Q6			UN5213	DIGITAL TRANSISTOR	
R330,331			RK73EB2E101J	CHIP R 100 J 1/4W		Q7			DTA124EUA	DIGITAL TRANSISTOR	
R332			RK73EB2E471J	CHIP R 470 J 1/4W		Q7			UN5112	DIGITAL TRANSISTOR	
R402			RK73FB2B102J	CHIP R 1.0K J 1/8W		Q8,9			2SA2057	TRANSISTOR	
R403			RK73GB2A223J	CHIP R 22K J 1/10W		Q11			DTC124EUA	DIGITAL TRANSISTOR	
R404			RK73GB2A472J	CHIP R 4.7K J 1/10W	E4E5	Q11			UN5212	DIGITAL TRANSISTOR	
R405-407			RK73GB2A222J	CHIP R 2.2K J 1/10W	E4E5	Q12			DTA124EUA	DIGITAL TRANSISTOR	
W1			R92-1252-05	CHIP R 0 OHM J 1/16W	E4E5	Q12			UN5112	DIGITAL TRANSISTOR	
D1			1N5393G-M5	DIODE		Q13			2SA2057	TRANSISTOR	
D2			RB160L-40	DIODE		Q14			2SC4081	TRANSISTOR	K6M2
D3			MA4056(N)-M	ZENER DIODE		Q23			DTC114YUA	DIGITAL TRANSISTOR	K6M2
D4			MA4082(N)-L	ZENER DIODE		Q23			UN5214	DIGITAL TRANSISTOR	
D6			MA4110-L	ZENER DIODE		Q24,25			2SB1240	TRANSISTOR	K6M2
D9-12			S1J	DIODE		Q25			2SB1240	TRANSISTOR	E4E5
D9-12			1SR154-400	DIODE		Q26			DTC114YUA	DIGITAL TRANSISTOR	
D13			1SS133	DIODE		Q26			UN5214	DIGITAL TRANSISTOR	
D14			MA4056-M	ZENER DIODE	M2E4E5	Q27			2SA1576A	TRANSISTOR	
D15			MA4047-M	ZENER DIODE	E4E5	Q28			DTA124EUA	DIGITAL TRANSISTOR	
D16			MA4068(N)-M	ZENER DIODE		Q28			UN5112	DIGITAL TRANSISTOR	
D17			MA4062(N)-M	ZENER DIODE		Q29			DTA123JK	DIGITAL TRANSISTOR	M2E4E5
D20			1SS133	DIODE		Q29			KRA105S	DIGITAL TRANSISTOR	M2E4E5
D23,24			DAP202U	DIODE		Q30			DTC144EUA	DIGITAL TRANSISTOR	
D23,24			MA142WA	DIODE		Q30			UN5213	DIGITAL TRANSISTOR	
D25-27			RD6.8M(B2)	ZENER DIODE	M2	Q32-34			2SC4081	TRANSISTOR	
D25,26			RD6.8M(B2)	ZENER DIODE	K6E4E5	Q51,52			DTA124EUA	DIGITAL TRANSISTOR	
D28			RD6.8MW	ZENER DIODE	M2	Q51,52			UN5112	DIGITAL TRANSISTOR	
D29-31			1SS133	DIODE		Q53			DTC143TUA	DIGITAL TRANSISTOR	
D33-40			S1J	DIODE		Q53			UN5216	DIGITAL TRANSISTOR	
D33-40			1SR154-400	DIODE		Q54			DTC124EUA	DIGITAL TRANSISTOR	
D50			RD6.8M(B2)	ZENER DIODE		Q54			UN5212	DIGITAL TRANSISTOR	
D51			RD6.8MW	ZENER DIODE		Q55,56			DTC143TUA	DIGITAL TRANSISTOR	
						Q55,56			UN5216	DIGITAL TRANSISTOR	

E : Europe K : North America K6 : KDC-722 E4 : KDC-7024
M : Other Areas W : Without Europe M2 : KDC-8023 E5 : KDC-7024Y

△ Indicates safety critical components.

PARTS LIST

* New parts

Parts without **Parts No.** are not supplied.Les articles non mentionnés dans le **Parts No.** ne sont pas fournis.Teile ohne **Parts No.** werden nicht geliefert.

ELECTRIC UNIT (X25-966x-xx)

Ref. No.	A d d	N e w	Parts No.	Description	Desti- nation
Q59,60 Q59,60 Q63 Q63 Q102			DTC143TUA UN5216 DTA124EUA UN5112 DTC124EUA	DIGITAL TRANSISTOR DIGITAL TRANSISTOR DIGITAL TRANSISTOR DIGITAL TRANSISTOR DIGITAL TRANSISTOR	
Q102 Q103 Q104 Q104 TH1			UN5212 2SB1188(Q,R) DTC143TUA UN5216 PTH9C42BD471Q	DIGITAL TRANSISTOR TRANSISTOR DIGITAL TRANSISTOR DIGITAL TRANSISTOR POSITIVE RESISTOR	E4E5 E4E5
A1 A1		*	X86-3730-11 X86-3732-70	FRONT-END UNIT FRONT-END UNIT	K6M2 E4E5
CD PLAYER UNIT (X32-5200-00)					
C1,2 C3 C4 C5 C6			CK73GB0J105K CK73FB1A225K C92-0566-05 CC73GCH1H220J CC73GCH1H030C	CHIP C 1.0UF K CHIP C 2.2UF K CHIP-TAN 10UF 6.3WV CHIP C 22PF J CHIP C 3.0PF C	
C7 C8 C10 C11 C12			CK73GB1C104K CK73GB0J105K CK73GB1H472K CK73GB1H682K CK73GB1H332K	CHIP C 0.10UF K CHIP C 1.0UF K CHIP C 4700PF K CHIP C 6800PF K CHIP C 3300PF K	
C13 C14 C15 C16 C17			CK73GB1C333K CK73GB1H472K CK73GB1E473K CC73GCH1H221J CK73GB1H472K	CHIP C 0.033UF K CHIP C 4700PF K CHIP C 0.047UF K CHIP C 220PF J CHIP C 4700PF K	
C18 C19,20 C21 C23 C24			CC73GCH1H331J CK73GB1C104K CK73FB1A225K CK73GB1H102K CK73GB1E223K	CHIP C 330PF J CHIP C 0.10UF K CHIP C 2.2UF K CHIP C 1000PF K CHIP C 0.022UF K	
C25 C26 C28 C29 C33			CK73GB1H153K CK73GB0J105K CK73GB0J105K CK73GB1C104K CK73GB1C104K	CHIP C 0.015UF K CHIP C 1.0UF K CHIP C 1.0UF K CHIP C 0.10UF K CHIP C 0.10UF K	
C35 C39 C40 C41 C42			CK73GB1C104K CK73GB1H152K CK73GB1H103K CK73EB1C225K CK73GB1H152K	CHIP C 0.10UF K CHIP C 1500PF K CHIP C 0.010UF K CHIP C 2.2UF K CHIP C 1500PF K	
C44 C46 C51 C55 C67,68			CK73GB1H103K CK73GB1E473K CK73GB1C104K CK73GB1C104K CK73GB1C104K	CHIP C 0.010UF K CHIP C 0.047UF K CHIP C 0.10UF K CHIP C 0.10UF K CHIP C 0.10UF K	
C71,72 C77,78 C79,80 C85 C89			CK73GB1H471K CC73GCH1H680J CK73GB1H222K CK73GB1C104K CK73GB1H222K	CHIP C 470PF K CHIP C 68PF J CHIP C 2200PF K CHIP C 0.10UF K CHIP C 2200PF K	
CN1			E40-9536-05	FLAT CABLE CONNECTOR	

Ref. No.	A d d	N e w	Parts No.	Description	Desti- nation
CN1 CN2 CN2			E41-0193-05 E40-9527-05 E41-0213-05	FLAT CABLE CONNECTOR FLAT CABLE CONNECTOR FLAT CABLE CONNECTOR	
X1			L78-0851-05	RESONATOR (16.93MHZ)	
CP1 CP2 R3 R5 R6			R90-1019-05 R90-1014-05 RK73GB2A272J RK73GB2A361J RK73GB2A272J	MULTI-COMP 100 X2 MULTI-COMP 100 X4 CHIP R 2.7K J 1/10W CHIP R 360 J 1/10W CHIP R 2.7K J 1/10W	
R7 R8 R9 R10,11 R12			RK73GB2A104J RK73GB2A472J RK73FB2B100J RK73GB2A562J RK73GB2A682J	CHIP R 100K J 1/10W CHIP R 4.7K J 1/10W CHIP R 10 J 1/8W CHIP R 5.6K J 1/10W CHIP R 6.8K J 1/10W	
R13 R15 R16 R17 R18			RK73GB2A392J RK73GB2A824J RK73GB2A223J RK73GB2A393J RK73GB2A392J	CHIP R 3.9K J 1/10W CHIP R 820K J 1/10W CHIP R 22K J 1/10W CHIP R 39K J 1/10W CHIP R 3.9K J 1/10W	
R19 R20 R21 R22 R32			RK73GB2A473J RK73GB2A104J RK73GB2A244J RK73GB2A623J RK73GB2A683J	CHIP R 47K J 1/10W CHIP R 100K J 1/10W CHIP R 240K J 1/10W CHIP R 62K J 1/10W CHIP R 68K J 1/10W	
R34 R35 R36 R37 R38			RK73GB2A363J RK73GB2A104J RK73GB2A151J RK73GB2A471J RK73GB2A224J	CHIP R 36K J 1/10W CHIP R 100K J 1/10W CHIP R 150 J 1/10W CHIP R 470 J 1/10W CHIP R 220K J 1/10W	
R40 R46 R47 R49 R52			RK73GB2A133J RK73GB2A102J RK73GB2A103J RK73GB2A472J RK73GB2A104J	CHIP R 13K J 1/10W CHIP R 1.0K J 1/10W CHIP R 10K J 1/10W CHIP R 4.7K J 1/10W CHIP R 100K J 1/10W	
R53 R54 R70 R71 R73			RK73GB2A103J RK73GB2A104J RK73GB2A103J RK73GB2A183J RK73GB2A683J	CHIP R 10K J 1/10W CHIP R 100K J 1/10W CHIP R 10K J 1/10W CHIP R 18K J 1/10W CHIP R 68K J 1/10W	
R74 R75 R76 R79,80 R81			RK73GB2A123J RK73GB2A333J RK73GB2A103J RK73GB2A103J RK73GB2A333J	CHIP R 12K J 1/10W CHIP R 33K J 1/10W CHIP R 10K J 1/10W CHIP R 10K J 1/10W CHIP R 33K J 1/10W	
R82 R84 R101,102 R103,104 R107,108			RK73GB2A223J RK73GB2A103J RK73GB2A332J RK73GB2A562J RK73FB2B331J	CHIP R 22K J 1/10W CHIP R 10K J 1/10W CHIP R 3.3K J 1/10W CHIP R 5.6K J 1/10W CHIP R 330 J 1/8W	
R110 R117,118 R121,122 R125,126 R202			RK73FB2B201J RK73FB2B203J RK73FB2B203J RK73FB2B203J RK73GB2A104J	CHIP R 200 J 1/8W CHIP R 20K J 1/8W CHIP R 20K J 1/8W CHIP R 20K J 1/8W CHIP R 100K J 1/10W	

E : Europe K : North America K6 : KDC-722 E4 : KDC-7024
M : Other Areas W : Without Europe M2 : KDC-8023 E5 : KDC-7024Y

△ Indicates safety critical components.

PARTS LIST

* New parts

Parts without **Parts No.** are not supplied.Les articles non mentionnés dans le **Parts No.** ne sont pas fournis.Teile ohne **Parts No.** werden nicht geliefert.

CD PLAYER UNIT (X32-5200-00)

Ref. No.	A d d	N e w	Parts No.	Description	Desti- nation	Ref. No.	A d d	N e w	Parts No.	Description	Desti- nation
R213			RK73GB2A104J	CHIP R 100K J 1/10W		43	1B		G01-3077-04	EXTENSION SPRING	
R218			RK73GB2A473J	CHIP R 47K J 1/10W		44	2B		G02-1399-04	FLAT SPRING	
R233			RK73GB2A622J	CHIP R 6.2K J 1/10W		45	2B		G02-1408-04	FLAT SPRING	
R234			RK73GB2A103J	CHIP R 10K J 1/10W							
S1,2			S68-0863-05	PUSH SWITCH		51	1A		J21-9676-22	MOUNTING HARDWARE	
S3			S68-0862-05	PUSH SWITCH		52	3B		J21-9677-02	MOUNTING HARDWARE	
D1			DAN202U	DIODE		53	1B		J21-9678-03	MOUNTING HARDWARE	
D2			MA8051-L	ZENER DIODE		55	1A		J90-1001-11	GUIDE	
D3			DA204U	DIODE		56	1B		J90-1023-03	GUIDE	
D4			DAN202U	DIODE		A	2B		N09-4460-05	TAPTITE SCREW (OVAL P TAPTIT)	
IC1			AN22002AA	ANALOGUE IC		B	1B		N09-4472-05	MACHINE SCREW (M1.7X8.5)	
IC2			MN662773KH2	MOS-IC		C	2B		N09-6004-05	MACHINE SCREW (M1.7X2.5 IB-L)	
IC4			BA5824FP	ANALOGUE IC		E	2B		N09-6007-05	MACHINE SCREW (PAN M2X2)	
IC6			NJM4580M1	ANALOGUE IC		F	1A		N09-6051-05	TAPTITE SCREW (BIND P 2X5)	
Q1			MCH6101	TRANSISTOR		G	2A		N19-2163-04	FLAT WASHER	
Q2			DTC124EUA	DIGITAL TRANSISTOR		H	1B		N39-2020-46	PAN HEAD MACHIN SCREW	
Q3			DTA143XUA	DIGITAL TRANSISTOR		J	1B		N09-6108-05	MACHINE SCREW (M2*3.5TYPE3)	
Q4			2SA1362(Y)	TRANSISTOR		DM1	3B		T42-1066-04	DC MOTOR ASSY (SP)	
Q5			DTC124EUA	DIGITAL TRANSISTOR		DM2	2B		T42-1067-04	DC MOTOR ASSY (LO)	
CD MECHANISM ASSY (X92-4450-01)						DPU1	2D		X93-2000-00	OPTICAL PICKUP ASSY	
2	1B		A10-4827-12	CHASSIS							
5	1B		D10-4576-43	ARM ASSY							
8	2A		D10-4579-03	LEVER ASSY							
10	3A		D10-4581-13	ARM							
11	2A		D10-4582-13	ARM							
12	3A		D10-4583-03	ARM							
13	3A		D10-4584-03	ARM							
14	3B		D10-4585-03	ARM							
15	2A		D10-4586-13	SLIDER							
16	3B		D10-4587-22	SLIDER							
17	3B		D10-4588-13	SLIDER							
18	3B		D10-4595-04	ARM							
19	3B		D10-4596-14	ARM							
22	2A		D13-2151-04	GEAR							
23	2B		D13-2152-04	GEAR							
24	3B		D13-2153-04	GEAR							
25	3B		D13-2154-04	GEAR							
26	3B		D13-2155-04	WORM							
27	3B		D13-2156-14	GEAR							
28	3B		D13-2157-04	GEAR							
29	3B		D13-2158-04	GEAR							
30	3B		D13-2168-04	GEAR							
31	3B		D13-2171-04	GEAR							
32	2B		D13-2172-03	RACK (GEAR)							
33	2A		D14-0759-04	ROLLER							
35	2B		D21-2382-04	SHAFT							
36	1A		D23-0954-04	RETAINER							
37	1B		D39-0246-05	DAMPER							
38	2B		G01-3072-04	EXTENSION SPRING							
39	2A		G01-3073-04	TORSION COIL SPRING							
40	2A		G01-3074-04	EXTENSION SPRING							
41	1B		G01-3075-04	EXTENSION SPRING							
42	2A		G01-3076-04	EXTENSION SPRING							

E : Europe K : North America K6 : KDC-722 E4 : KDC-7024
M : Other Areas W : Without Europe M2 : KDC-8023 E5 : KDC-7024Y

△ Indicates safety critical components.

SPECIFICATIONS

		KDC-7024/Y	KDC-722	KDC-8023
FM	Frequency Range (Frequency step)	87.5MHz~108.0MHz (50kHz)	87.9MHz~107.9MHz (200kHz)	87.5MHz~108.0MHz (50kHz) 87.9MHz~107.9MHz (200kHz)
	Channel Space Selection	-	50kHz/200kHz	50kHz/200kHz
	Usable Sensitivity (S/N 26dB)	0.7μV/75Ω	-	-
	Usable Sensitivity (S/N 30dB)	-	9.3dBf (0.8μV/75Ω)	9.3dBf (0.8μV/75Ω)
	Quieting Sensitivity (S/N 46dB)	1.6μV/75Ω	-	-
	Quieting Sensitivity (S/N 50dB)	-	15.2dBf (1.6μV/75Ω)	15.2dBf (1.6μV/75Ω)
	Frequency Response (±3.0dB)	30Hz~15kHz	30Hz~15kHz	30Hz~15kHz
	S/N	65dB (MONO)	70dB (MONO)	70dB (MONO)
	Selectivity (DIN)	≥ 80dB (±400kHz)	-	-
	Selectivity	-	≥ 80dB (±400kHz)	≥ 80dB (±400kHz)
AM (MW)	Stereo Separation	35dB (1kHz)	40dB (1kHz)	40dB (1kHz)
	Frequency Range (Frequency step)	531kHz~1611kHz (9kHz)	530kHz~1700kHz (10kHz)	531kHz~1611kHz (9kHz) 530kHz~1700kHz (10kHz)
	Channel Space Selection	-	9kHz/10kHz	9kHz/10kHz
LW	Usable Sensitivity (S/N 20dB)	25μV	28dBμ (25μV)	28dBμ (25μV)
	Frequency Range	153kHz~281kHz	-	-
	Usable Sensitivity (S/N 20dB)	45μV	-	-
	Frequency Range	153kHz~281kHz	-	-
CD	Laser Diode	GaAlAs (λ=780nm)	GaAlAs (λ=780nm)	GaAlAs (λ=780nm)
	Digital Filter (D/A)	8 Times Over Sampling	8 Times Over Sampling	8 Times Over Sampling
	D/A Converter	1 Bit	1 Bit	1 Bit
	Spindle Speed (CD-DA)	500~200rpm (CLV)	500~200rpm (CLV)	500~200rpm (CLV)
	Wow & Flutter	Below Measurable Limit	Below Measurable Limit	Below Measurable Limit
	Frequency Response	10Hz~20kHz (±1dB)	10Hz~20kHz (±1dB)	10Hz~20kHz (±1dB)
	Total Harmonic Distortion	0.01% (1kHz)	0.01% (1kHz)	0.01% (1kHz)
	S/N Ratio	105dB (1kHz)	105dB (1kHz)	105dB (1kHz)
	Dynamic Range	93dB	93dB	93dB
	Channel Separation	95dB	95dB	95dB
Preout Level/Load (Unbalanced)		2000mV/10kΩ (CD/CD-CH)	2000mV/10kΩ (CD/CD-CH)	2000mV/10kΩ (CD/CD-CH)
Preout Impedance		≤ 600Ω	≤ 600Ω	≤ 600Ω
AUX Input	Frequency Response	-	-	20Hz~20kHz±1dB
	Input Maximum Voltage	-	-	1200mV
	Input impedance	-	-	100kΩ
Amplifier	Maximum Power	50Wx4	50Wx4	50Wx4
	Full Bandwidth Power (at less than 1% THD)	-	22Wx4	22Wx4
	PWR DIN45324, +B=14.4V	30Wx4	-	-
Tone	Bass	100Hz±10dB	100Hz±10dB	100Hz±10dB
	Middle	1kHz±10dB	1kHz±10dB	1kHz±10dB
	Treble	10kHz±10dB	10kHz±10dB	10kHz±10dB
General	Operating Voltage (11V~16V allowable)	14.4V	14.4V	14.4V
	Current Consumption	10A	10A	10A
	Installation Size (WxHxD)	178x50x165 (mm)	178x50x165 (mm) 7x1-15/16x6-1/2 (in)	178x50x165 (mm)
	Weight	1.70kg	3.75lbs (1.70kg)	1.70kg

KENWOOD follows a policy of continuous advancements in development. For this reason specifications may be changed without notice.

KENWOOD CORPORATION

2967-3, Ishikawa-machi, Hachioji-shi, Tokyo 192-8525, Japan

KENWOOD USA CORPORATION
P.O. BOX 22745, 2201 East Dominguez Street, Long Beach, CA90801-5745, U.S.A.

KENWOOD ELECTRONICS CANADA INC.
6070 Kestrel Road, Mississauga, Ontario, Canada L5T 1S8

KENWOOD ELECTRONICS LATIN AMERICA S.A.
P.O. Box 55-2791 Paillilla, Plaza Credicorp Bank Panama,
Piso 9, Oficina 901, Calle 50, Panama, Rep. de Panama

KENWOOD ELECTRONICS BRASIL LTDA.
Alameda Ministro Rocha Azevedo No. 456,
Edifício Jaú, 10o Andar, Cerqueira César, Cep 0140-001,
São Paulo-SP-Brasil

KENWOOD ELECTRONICS UK LIMITED
Kenwood House, Dwight Road, Watford, Herts, WD18 9EB, United Kingdom

KENWOOD ELECTRONICS DEUTSCHLAND GMBH
Rembrücker-Str. 15, 63150 Heusenstamm, Germany

KENWOOD ELECTRONICS FRANCE S.A.
13, Boulevard Ney, 75018 Paris, France

KENWOOD ELECTRONICS BELGIUM N.V.
Leuvensesteenweg 248 J, 1800 Vilvoorde, Belgium

KENWOOD ELECTRONICS ITALIA S.p.A.
Via G. Sirtori 7/9, 20129 Milano, Italy

KENWOOD IBÉRICA S.A.
Bolivia, 239-08020 Barcelona, Spain

KENWOOD ELECTRONICS AUSTRALIA PTY. LTD. (A.C.N. 001 499 074)
16 Giffnock Avenue, Centrecourt Estate, North Ryde,
N.S.W. 2113, Australia

KENWOOD ELECTRONICS (HONG KONG) LTD.
Unit 3712-3724, Level 37, Tower 1, Metroplaza, 223 Hing Fong Road, Kwai Fong, N.T.,
Hong Kong

KENWOOD ELECTRONICS GULF FZE
P.O. Box 61318, Jebel Ali, Dubai, U.A.E.

KENWOOD ELECTRONICS (THAILAND) CO., LTD.
2019 New Pechburi Road, Bangkok, Huaykwang, Bangkok, 10320 Thailand

KENWOOD ELECTRONICS SINGAPORE PTE. LTD.
1 Genting Lane, #07-00, Kenwood Building, Singapore, 349544

KENWOOD ELECTRONICS (MALAYSIA) SDN BHD
#4.01 Level 4, Wisma Academy Lot 4A, Jalan 19/1, 46300 Petaling Jaya, Selangor Darul Ehsan,
Malaysia