

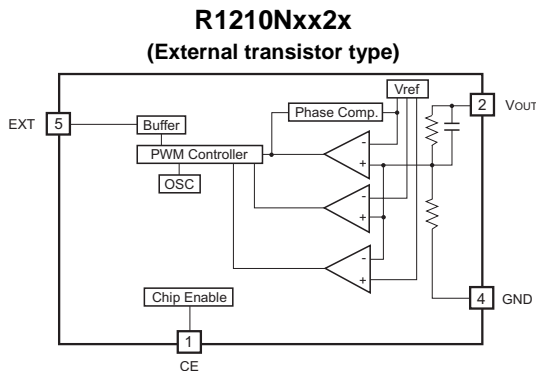
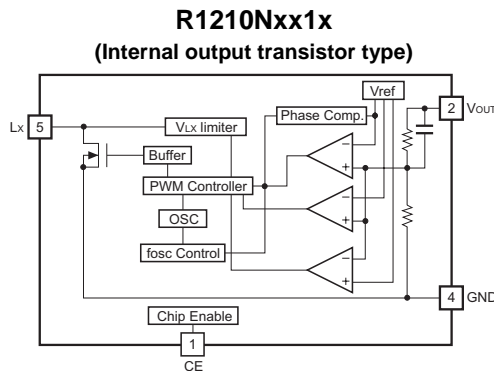
8V Input PWM Step-up DC/DC Converter

The R1210N Series are low supply current, CMOS-based PWM step-up DC/DC converters. By simply using an inductor, a diode, and a capacitor as external components, a high-efficiency step-up DC/DC converter can be easily configured. The xx1 version with an internal output transistor and the xx2 version with an external transistor are available. The oscillator frequency can be selected from 100kHz or 180kHz. The xx1A version is also available, which contains a basic frequency changeover circuit that switches the oscillator frequency from 100kHz to 35kHz when output load is reduced. R1210N also has a function that detects drastic changes in output voltage and reduces the amount of overshoot/undershoot by switching control mode.

FEATURES

- Supply Current (I_{DD1}) Typ. 35 μ A (R1210N301, 100kHz), Typ. 60 μ A (R1210N301, 180kHz)
($V_{OUT} = \text{SET } V_{OUT} \times 0.96$) Typ. 20 μ A (R1210N302, 100kHz), Typ. 25 μ A (R1210N302, 180kHz)
- Supply Current (I_{DD2}) Typ. 10 μ A ($V_{OUT} = \text{SET } V_{OUT} + 0.5\text{V}$, 100kHz)
..... Typ. 15 μ A (Same as the above, 180kHz)
- Standby Current ($I_{standby}$) Max. 0.5 μ A (In standby)
- Input Voltage Range (V_{IN}) Max. 8.0V
- Start-up Voltage (V_{start}) Max. 0.9V (xx1 Version), 0.8V (xx2 Version)
- Output Voltage Range (V_{OUT}) 2.2V to 6.0V (internally fixed) (2.2V to 3.5V for xx1A)
- Output Voltage Accuracy $\pm 2.5\%$
- Oscillator Frequency (f_{osc}) 100kHz (xx1A/xx1C/xx2C Version),
180kHz (xx1D/xx2D Version)
- Basic Frequency Change-over Circuit 100kHz \rightarrow 35kHz
(only xx1A Version)
- Oscillator Maximum Duty Cycle (Maxduty) Typ. 85%
- Efficiency Typ. 88% (R1210N301,
 $V_{IN} = 1.8\text{V}$, $I_{OUT} = 10\text{mA}$)
- Package SOT-23-5

BLOCK DIAGRAMS



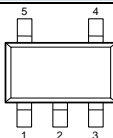
SELECTION GUIDE

Halogen Free	Package	Q'ty per Reel	Part No.
H/F	SOT-23-5	3,000 pcs	R1210Nxx*\$-TR-FE

- xx : Specify the output voltage within the range of 2.2V (22) to 6.0V (60) in 0.1V steps. (up to 3.5V (35) for xx1A)
- * : Select from (1) internal output transistor type or (2) external transistor type.
- \$: Select from (A) oscillator frequency 100kHz, built-in basic frequency change-over circuit, (C) 100kHz or (D) 180kHz.
- (R1210Nxx2A-TR-F is not available.)

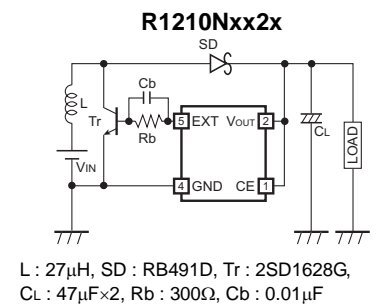
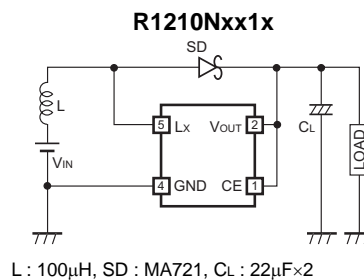
PACKAGE (Top View)

SOT-23-5



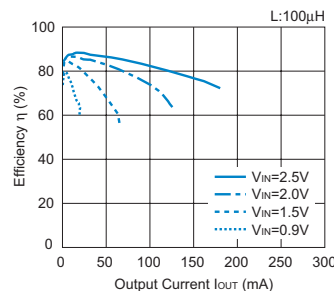
1	CE
2	V _{OUT}
3	NC
4	GND
5	Lx or EXT

TYPICAL APPLICATIONS

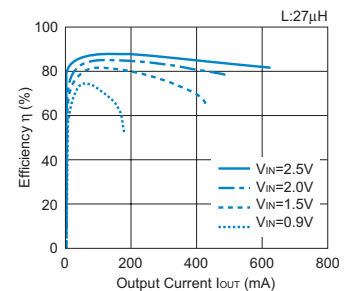


TYPICAL CHARACTERISTICS

R1210N301C Efficiency vs. Output Current



R1210N302C Efficiency vs. Output Current



APPLICATIONS

- Power source for battery-powered equipment
- Power source for hand-held communication equipment, cameras, and VCRs
- Power source for equipment that requires the voltage greater than the battery voltage



1. The products and the product specifications described in this document are subject to change or discontinuation of production without notice for reasons such as improvement. Therefore, before deciding to use the products, please refer to Ricoh sales representatives for the latest information thereon.
2. The materials in this document may not be copied or otherwise reproduced in whole or in part without prior written consent of Ricoh.
3. Please be sure to take any necessary formalities under relevant laws or regulations before exporting or otherwise taking out of your country the products or the technical information described herein.
4. The technical information described in this document shows typical characteristics of and example application circuits for the products. The release of such information is not to be construed as a warranty of or a grant of license under Ricoh's or any third party's intellectual property rights or any other rights.
5. The products listed in this document are intended and designed for use as general electronic components in standard applications (office equipment, telecommunication equipment, measuring instruments, consumer electronic products, amusement equipment etc.). Those customers intending to use a product in an application requiring extreme quality and reliability, for example, in a highly specific application where the failure or misoperation of the product could result in human injury or death (aircraft, spacevehicle, nuclear reactor control system, traffic control system, automotive and transportation equipment, combustion equipment, safety devices, life support system etc.) should first contact us.
6. We are making our continuous effort to improve the quality and reliability of our products, but semiconductor products are likely to fail with certain probability. In order to prevent any injury to persons or damages to property resulting from such failure, customers should be careful enough to incorporate safety measures in their design, such as redundancy feature, firecontainment feature and fail-safe feature. We do not assume any liability or responsibility for any loss or damage arising from misuse or inappropriate use of the products.
7. Anti-radiation design is not implemented in the products described in this document.
8. Please contact Ricoh sales representatives should you have any questions or comments concerning the products or the technical information.

RICOH COMPANY., LTD. Electronic Devices Company



■ Ricoh presented with the Japan Management Quality Award for 1999.
Ricoh continually strives to promote customer satisfaction, and shares the achievements of its management quality improvement program with people and society.



■ Ricoh awarded ISO 14001 certification.

The Ricoh Group was awarded ISO 14001 certification, which is an international standard for environmental management systems, at both its domestic and overseas production facilities. Our current aim is to obtain ISO 14001 certification for all of our business offices.

<http://www.ricoh.com/LSI/>

RICOH COMPANY, LTD. Electronic Devices Company

● Higashi-Shinagawa Office (International Sales)
3-32-3, Higashi-Shinagawa, Shinagawa-ku, Tokyo 140-8655, Japan
Phone: +81-3-5479-2857 Fax: +81-3-5479-0502

RICOH EUROPE (NETHERLANDS) B.V.

● Semiconductor Support Centre
Prof. W.H.Keesomlaan 1, 1183 DL Amstelveen, The Netherlands
P.O.Box 114, 1180 AC Amstelveen
Phone: +31-20-5474-309 Fax: +31-20-5474-791

RICOH ELECTRONIC DEVICES KOREA Co., Ltd.

11 floor, Haesung 1 building, 942, Daechidong, Gangnamgu, Seoul, Korea
Phone: +82-2-2135-5700 Fax: +82-2-2135-5705

RICOH ELECTRONIC DEVICES SHANGHAI Co., Ltd.

Room403, No.2 Building, 690#Bi Bo Road, Pu Dong New district, Shanghai 201203,
People's Republic of China
Phone: +86-21-5027-3200 Fax: +86-21-5027-3299

RICOH COMPANY, LTD. Electronic Devices Company

● Taipei office
Room109, 10F-1, No.51, Hengyang Rd., Taipei City, Taiwan (R.O.C.)
Phone: +886-2-2313-1621/1622 Fax: +886-2-2313-1623



Ricoh completed the organization of the Lead-free production for all of our products. After Apr. 1, 2006, we will ship out the lead free products only. Thus, all products that will be shipped from now on comply with RoHS Directive.