



Liquid Crystal Display Television Service Manual

Chassis: M-STAR

Product Type: LT3214S/LT2614S

Contents

Contents	- 2 -
Service Manual	- 3 -
1. Product Safety Servicing Guidelines	- 3 -
2. Product Function Specifications	- 4 -
2-1 LT3214S/LT2614S Product Function	- 4 -
2-2 LT3214S/LT2614S Specifications	- 7 -
3. Lcd Panel Spec	- 9 -
3-1 General Description	- 9 -
3-2 General Features	- 11 -
4. Block Diagram	- 12 -
4-1 Chassis Block Diagram	- 12 -
4-2 Video Processing Part	- 15 -
4-3 Audio Processing Part	- 16 -
4-4 I2C Controlling Part	- 16 -
4-5 Power Part	- 17 -
5. Service Mode And Adjustment	- 17 -
5-1 Service Mode	- 17 -
6. Software Updating	- 21 -
6-1、Updating Cable	- 21 -
6-2、LT3214S/LT2614S Software Updating Operation	- 21 -
7. LT3214S/LT2614S Explode View And Bom	- 29 -
8. Spare Parts List	- 32 -
9. Troubleshooting	- 32 -
10. Circuit Diagram	- 32 -

Service Manual

1. Product Safety Servicing Guidelines

WARNING:

Service should not be attempted by anyone unfamiliar with the necessary precaution on this receiver. The following are the necessary precaution to be observed before serving this chassis.

1. Since the power supply circuit of this receiver is directly connected to the AC power line, an Isolation transformer should be used during any dynamic service to avoid possible shock hazard.
2. When replacing a chassis in the cabinet, always be certain that all the protective devices are put back in place, such as : non-metallic control knobs, insulating cover, shields, isolation resistor-capacitor network etc.
3. When replacing parts or circuit boards, disconnect the power cord.
4. When replacing a high wattage resistor (oxide metal film resistor) on the circuit board, keep the resistor(1/2in) away from circuit board.
6. Connection wires must be kept away from components with high voltage or high temperature.
7. If any fuse in this LCD TV receiver is blown, replace it with the FUSE specified in the chassis part list.



The lightning flash with arrowhead symbol, within an equilateral triangle is intended to alert the user to the

presence of uninsulated dangerous voltage within the products enclosure that may be of sufficient magnitude to constitute a risk of electric shock.



The exclamation point within an equilateral triangle is intended to alert the user to the presence of important operating and maintenance(servicing) instructions in the literature accompanying the set.

Many electrical and mechanical parts in the chassis have special safety-related characteristics. These characteristics are often passed unnoticed by a visual inspection. When replacement parts are required , be sure the service technician uses replacement parts specified by us that have the same characteristics as the original part. Unauthorized substitutions may result in fire , electric shock , injury to persons or other hazards. This LCD TV product should be situated away from heat source such as radiation, stoves, or other product that produce heat.

2. Product Function Specifications

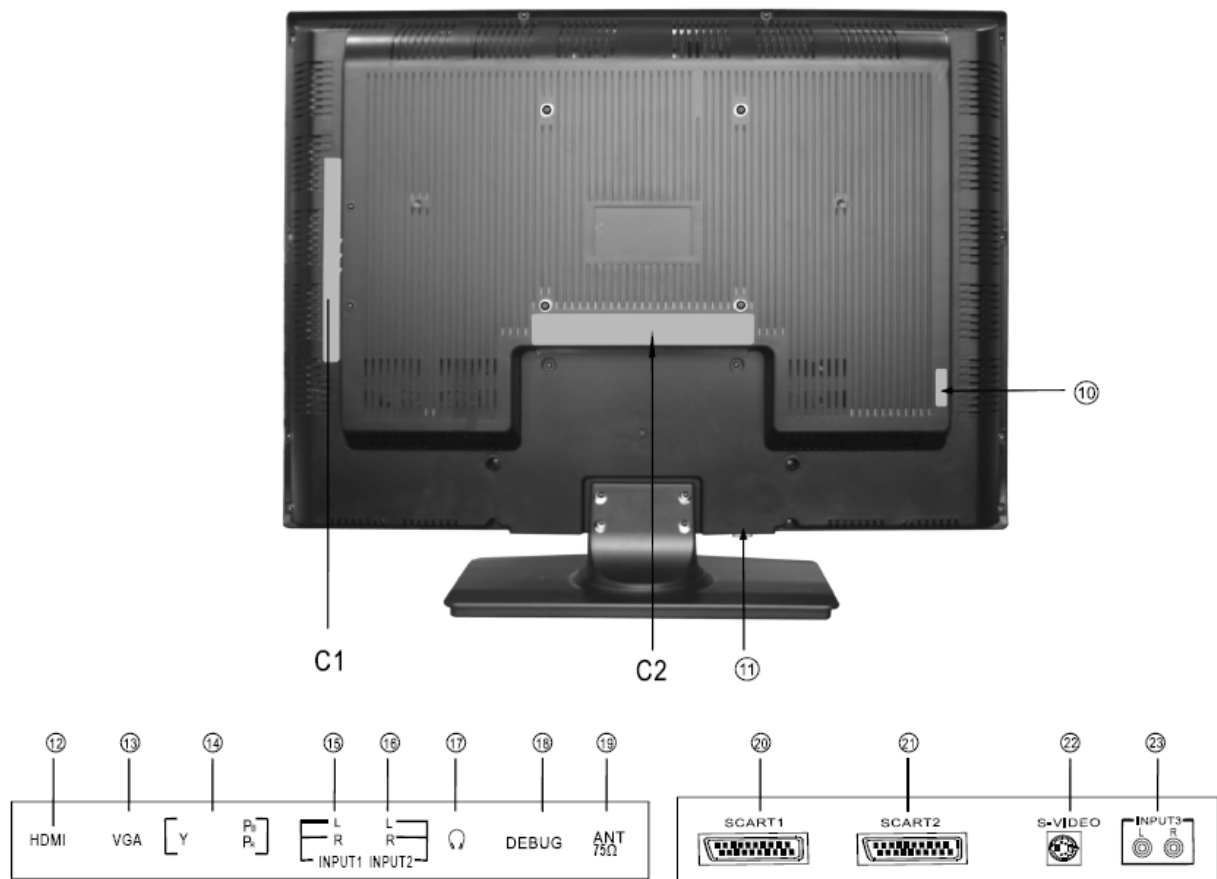
2-1 LT3214S/LT2614S Product Function

LCD TV Service Manual

Front Controls



LCD TV Service Manual



- | | | |
|----------------------------|-------------------------|--------------------------|
| ① Power indicator | ⑩ AC Power Socket | ⑲ Antenna input |
| ② IR Sensor | ⑪ Power Switch (ON/OFF) | ⑳ Scart 1 Connector |
| ③ Menu button | ⑫ HDMI input | ㉑ Scart 2 Connector |
| ④ Source select | ⑬ VGA input | ㉒ S-VIDEO Input |
| ⑤ Volume down/cursor left | ⑭ YPbPr input | ㉓ Audio Input 3(S-VIDEO) |
| ⑥ Volume up/cursor right | ⑮ Audio Input 1(VGA) | |
| ⑦ Channel down/cursor down | ⑯ Audio Input 2(YPbPr) | |
| ⑧ Channel up/cursor up | ⑰ Headphone Output | |
| ⑨ Power button (standby) | ⑱ DEBUG | |

Note: The above figures are for reference only, please refer to the units.

- Multimedia – TV receiver, Video monitor and PC display, all in one.
- Wider viewing angle, 16:9 display – 176° viewing angle.
- Digital display device – truthfully reproducing the images, without

distortion or blurring, irrespective of magnetic or geomagnetic effect.

- 200 channels memory
- Sleep timer
- Teletext with 252 pages memory
- Stereo
- Dual SCART interface
- Multi-language OSD

2-2 LT3214S/LT2614S Specifications

LCD TV Service Manual

Specifications

Screen Size:	32-inch (81 cm) TFT LCD TV
Native Resolution:	1366 x 768 Pixels (corresponding to WXGA)
Colour System:	PAL/SECAM
Sound System:	B/G, D/K, I, L/L'
Tuner:	VHF/UHF: 48.25~863.25MHz
Antenna:	75Ω VHF/UHF input
Stereo:	NICAM/A2
VIDEO INPUT:	
SCART-1 (Video and RGB)	Video: 1 Vp-p, negative sync, 75Ω input RGB: 0.7 Vp-p, 75Ω input
SCART-2 (Video)	Video: 1 Vp-p, negative sync, 75Ω input
Audio in	Stereo audio input for SCART1 and SCART2
COMPONENT	RCA, 0.7 Vp-p/75Ω input (480I/60Hz, 480P/60Hz, 576I/50Hz, 576P/50Hz, 720P/60Hz, 1080I/50Hz, 1080I/60Hz)
Audio in	RCA Stereo audio input
PC INPUT:	
VGA	15 Pin , Analog RGB signal, 0.7Vp-p, 75Ω input (VGA, SVGA, XGA)
Audio in	RCA Stereo audio input
MONITOR OUT	
Speaker Output	8W+8W
Power Requirement	AC 160 to 240V, 50/60Hz
Power Consumption	165W
Dimensions(mm)	813.2 (L) x240 (D) x 642 (H)
Weight (gross)	20.2kg

Allowable temperature of operation environment

.....0°C to 40°C

ACCESSORIES

Operating Instructions	1
Remote Control Unit	1
Power Lead	1
Dry Cell Battery	2

Note: Specifications and design are subject to possible modifications without notice due to improvements.

The HDMI interface (High Definition Multimedia Interface)

What is HDMI?

HDMI, is a next-generation interface that enables the transmission of digital audiovisual signals using a single cable without compression, and embeds the HDCP feature. The HDMI interface is provided for transmitting digital television audiovisual signals from DVD players, set-top boxes and other audiovisual sources to television sets, projections and other video displays. The HDMI interface is optimized for next High Definition content.

HDCP (High bandwidth Digital Content Protection system)

HDCP, is designed for protecting Audiovisual content over certain high-bandwidth interfaces, referred to as HDCP-protected interfaces, from being copied.

Specifications

Screen Size:	26-inch (66 cm) TFT LCD TV
Native Resolution:	1366 x 768 Pixels (corresponding to WXGA)
Colour System:	PAL/SECAM
Sound System:	B/G, D/K, I, L/L'
Tuner:	VHF/UHF: 48.25~863.25MHz
Antenna:	75Ω VHF/UHF input
Stereo:	NICAM/A2
VIDEO INPUT:	
SCART-1 (Video and RGB)	Video: 1 Vp-p, negative sync, 75Ω input RGB: 0.7 Vp-p, 75Ω input
SCART-2 (Video)	Video: 1 Vp-p, negative sync, 75Ω input
Audio in	Stereo audio input for SCART1 and SCART2
COMPONENT	RCA, 0.7 Vp-p/75Ω input (480I/60Hz, 480P/60Hz, 576I/50Hz, 576P/50Hz, 720P/60Hz, 1080I/50Hz, 1080I/60Hz)
Audio in	RCA Stereo audio input
PC INPUT:	
VGA	15 Pin , Analog RGB signal, 0.7Vp-p, 75Ω input (VGA, SVGA, XGA)
Audio in	RCA Stereo audio input
MONITOR OUT	
Speaker Output	6W+6W
Power Requirement	AC 100 to 240V 50/60Hz
Power Consumption	140W
Dimensions(mm)	676(L)x208(D)x544(H)
Weight (gross)	16kg
Allowable temperature of operation environment	
.....0°C to 40°C	
ACCESSORIES	
Operating Instructions	1
Remote Control Unit	1
Power Lead	1
Dry Cell Battery	2

Note: Specifications and design are subject to possible modifications without notice due to improvements.

3. Lcd Panel Spec

3-1 General Description

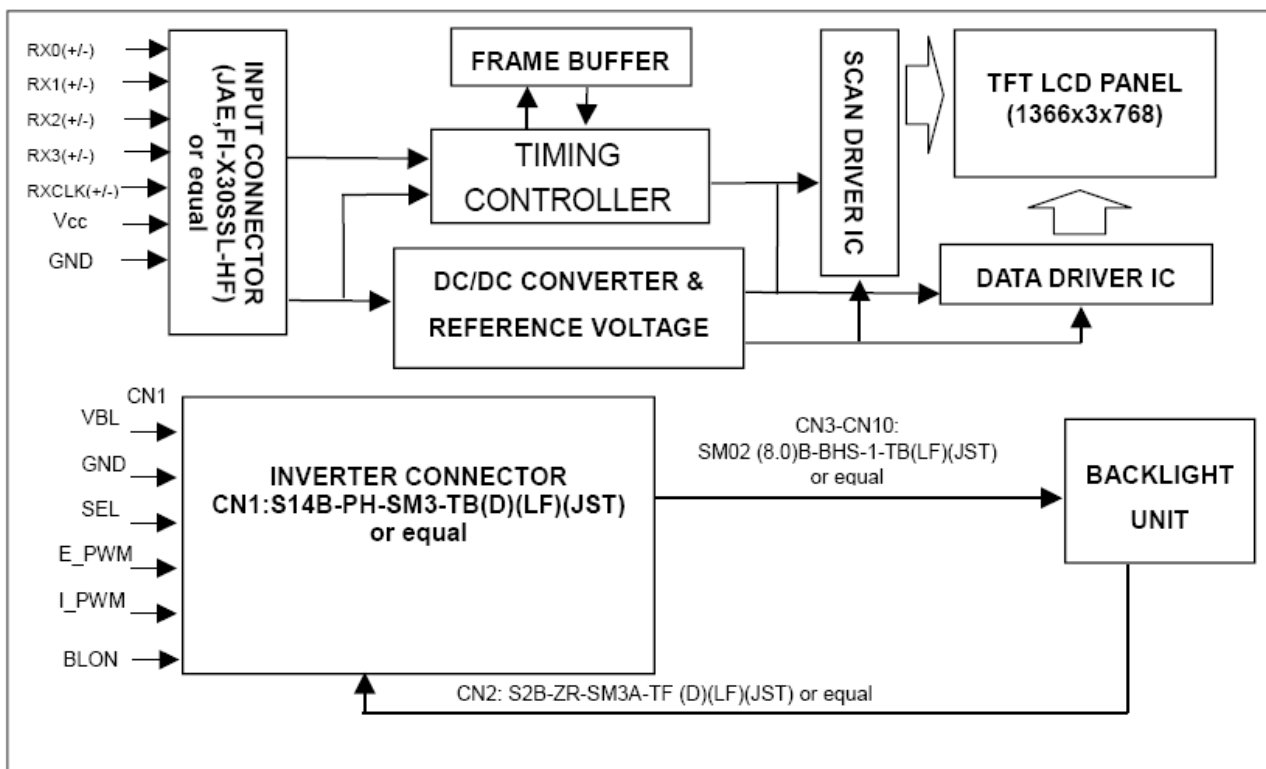
LT3214S' S Lcd Panel is a 32" TFT Liquid Crystal Display module with 16-CCFL Backlight unit and 1ch-LVDS interface. This module supports 1366 x 768 WXGA format and can display true 16.7M colors (8-bit colors).

The inverter module for backlight is built-in.

LCD TV Service Manual

FEATURES

- High brightness (400 nits)
- Ultra-high contrast ratio (1200:1)
- Faster response time (gray to gray average 6.5ms)
- High color saturation NTSC 75%
- Ultra wide viewing angle : 176(H)/176(V) (CR>20) with Super MVA technology
- DE (Data Enable) only mode
- LVDS (Low Voltage Differential Signaling) interface
- 180 degree rotation display (option)
- Color reproduction (nature color)



LCD TV Service Manual

LT2614S' S Lcd Panel is a 26.0 inch Color TFT-LCD Module T260XW02. This LCD module has a TFT active matrix type liquid crystal panel 1366x768 pixels, and diagonal size of 26.0 inch. This module supports 1366x768 XGA-WIDE mode (Non-interlace).

Each pixel is divided into Red, Green and Blue sub-pixels or dots which are arranged in vertical stripes. Gray scale or the brightness of the sub-pixel color is determined with a 8-bit gray scale signal for each dot.

The T260XW02 has been designed to apply the 8-bit 1 channel LVDS interface method. It is intended to support displays where high brightness, wide viewing angle, high color saturation, and high color depth are very important.

3-2 General Features

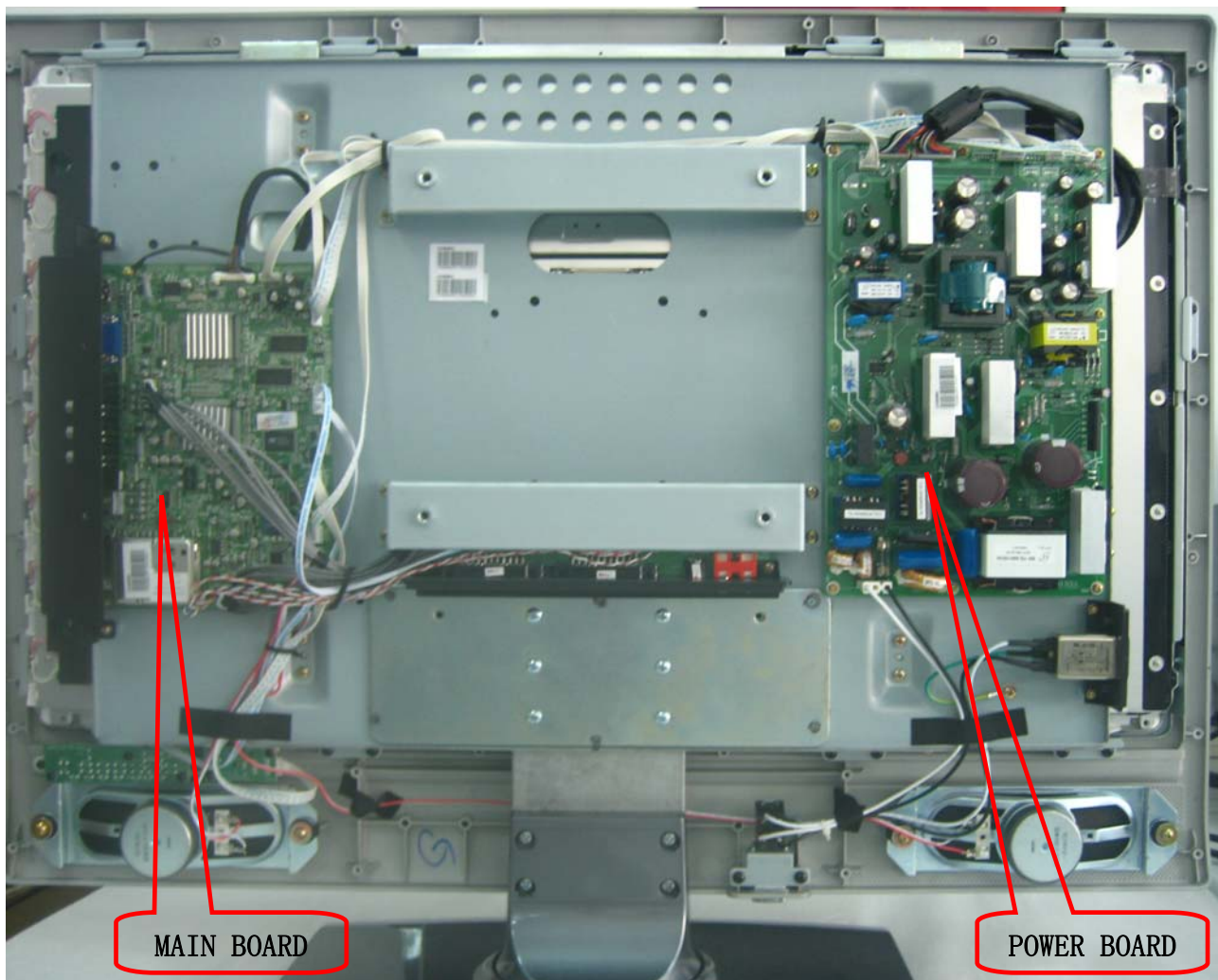
Item	Specification	Unit	Note
Active Area	708.954(H) x 398.592 (V) (32.02" diagonal)	mm	(1)
Bezel Opening Area	714.96 (H) x 404.6 (V)	mm	
Driver Element	a-si TFT active matrix	-	
Pixel Number	1366 x R.G.B. x 768	pixel	
Pixel Pitch (Sub Pixel)	0.1730 (H) x 0.5190 (V)	mm	
Pixel Arrangement	RGB vertical stripe	-	
Display Colors	16.7M	color	
Display Operation Mode	Transmissive mode / Normally black	-	
Surface Treatment	Anti-Glare coating (Haze 25%),Hard coating (3H)	-	

LCD TV Service Manual

Items	Specification	Unit	Note
Active Screen Size	26.0	inches	
Display Area	575.769 (H) x 323.712(V)	mm	
Pixel Pitch	0.4215	mm	
Outline Dimension	626.0 (H) x 373.0 (V) x 47.5(D)	mm	With inverter
Driver Element	a-Si TFT active matrix		
Display Colors	16.7M	Colors	
Number of Pixels	1366 x 768	Pixel	
Pixel Arrangement	RGB vertical stripe		
Display Mode	Normally Black		
BL Structure	8 U-Lamps		
Surface Treatment	AG, 3H		

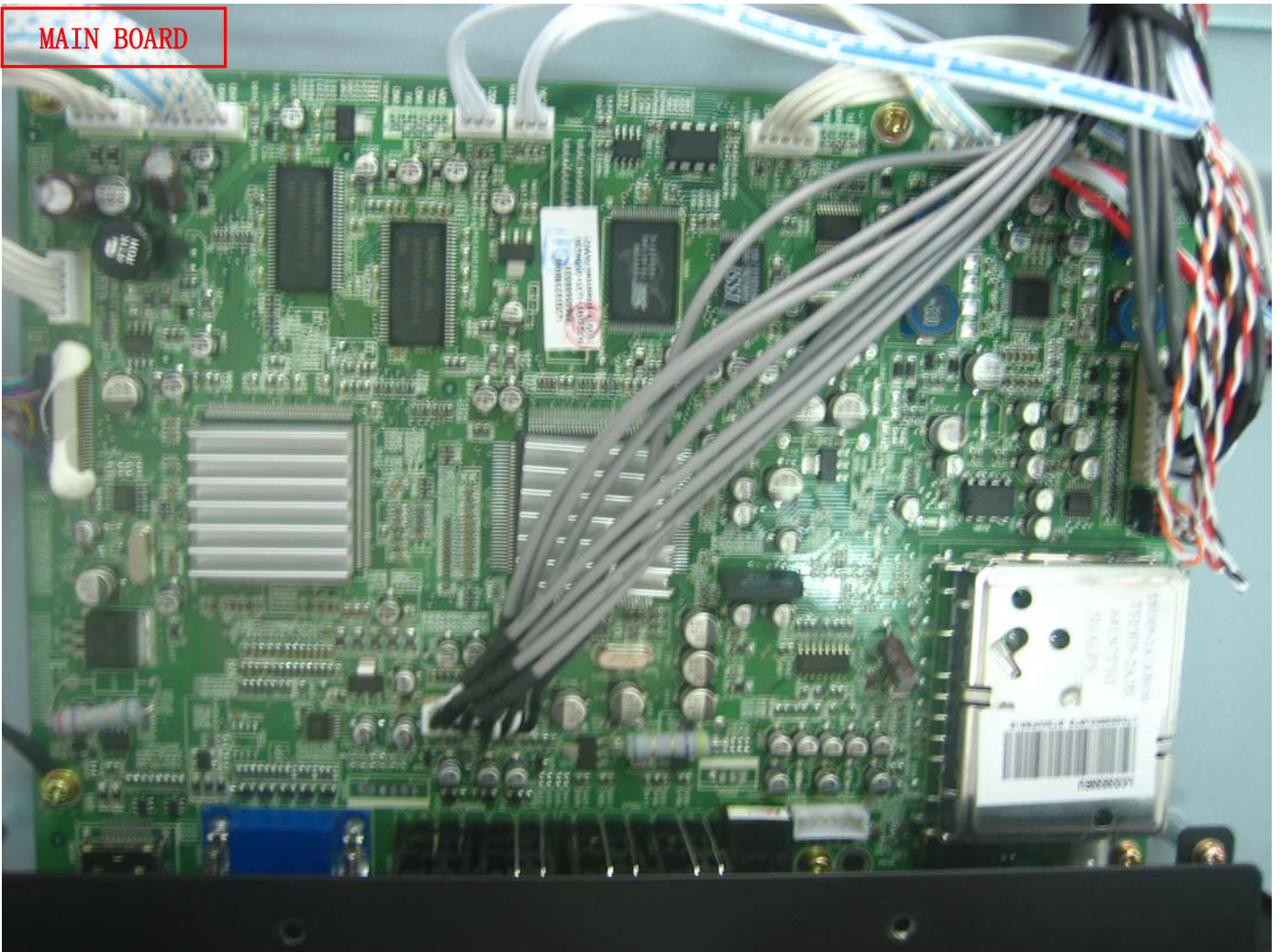
4. Block Diagram

4-1 Chassis Block Diagram



LCD TV Service Manual

MAIN BOARD

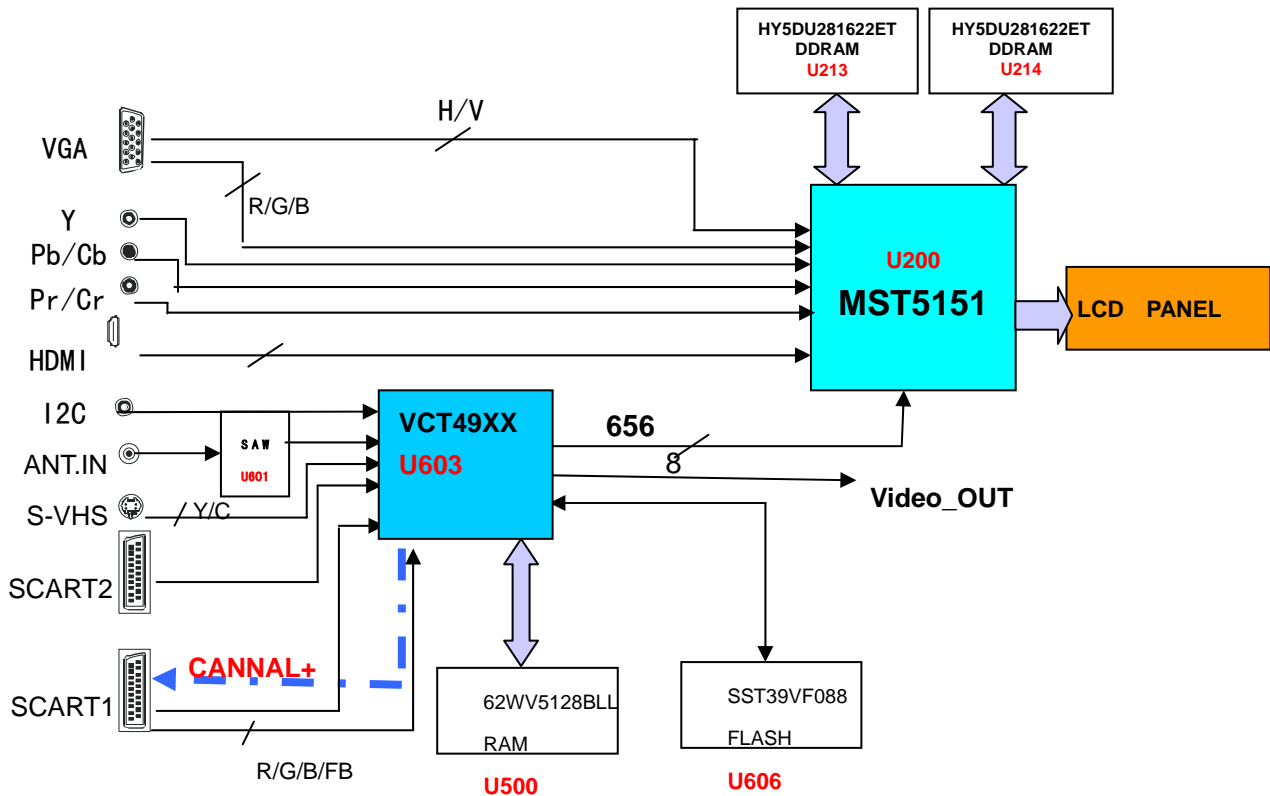


LCD TV Service Manual

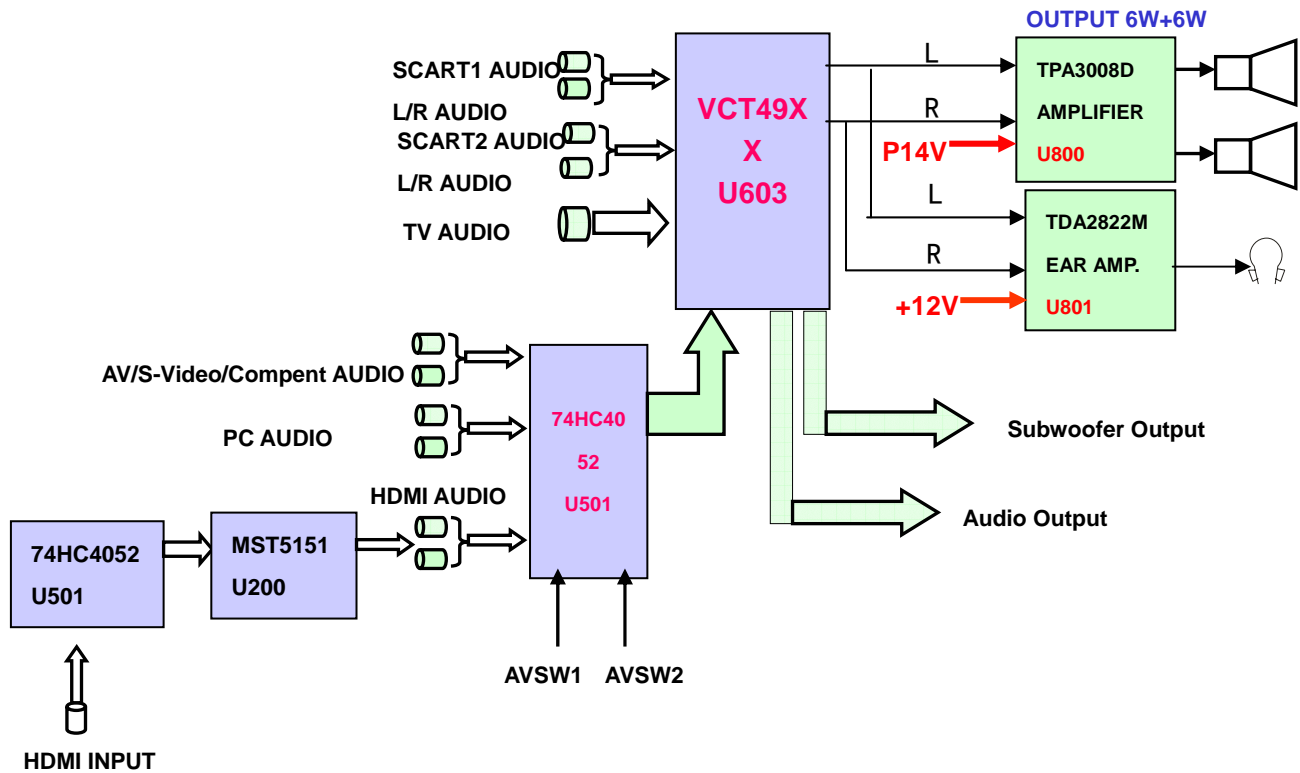
POWER BOARD



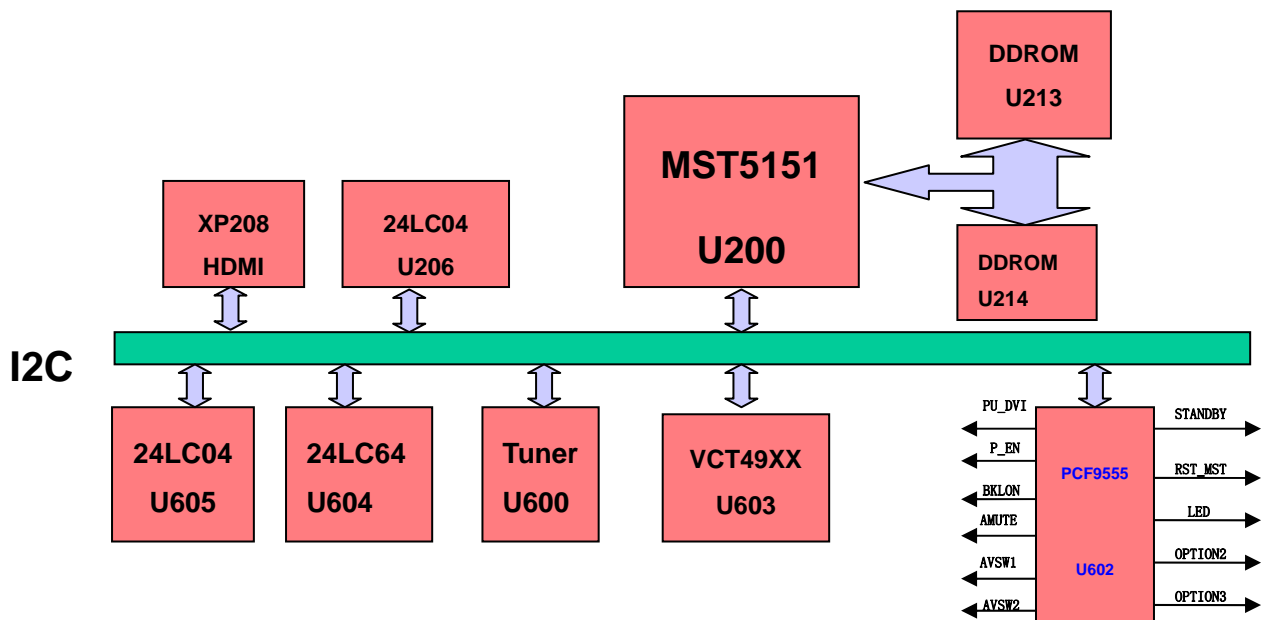
4-2 Video Processing Part



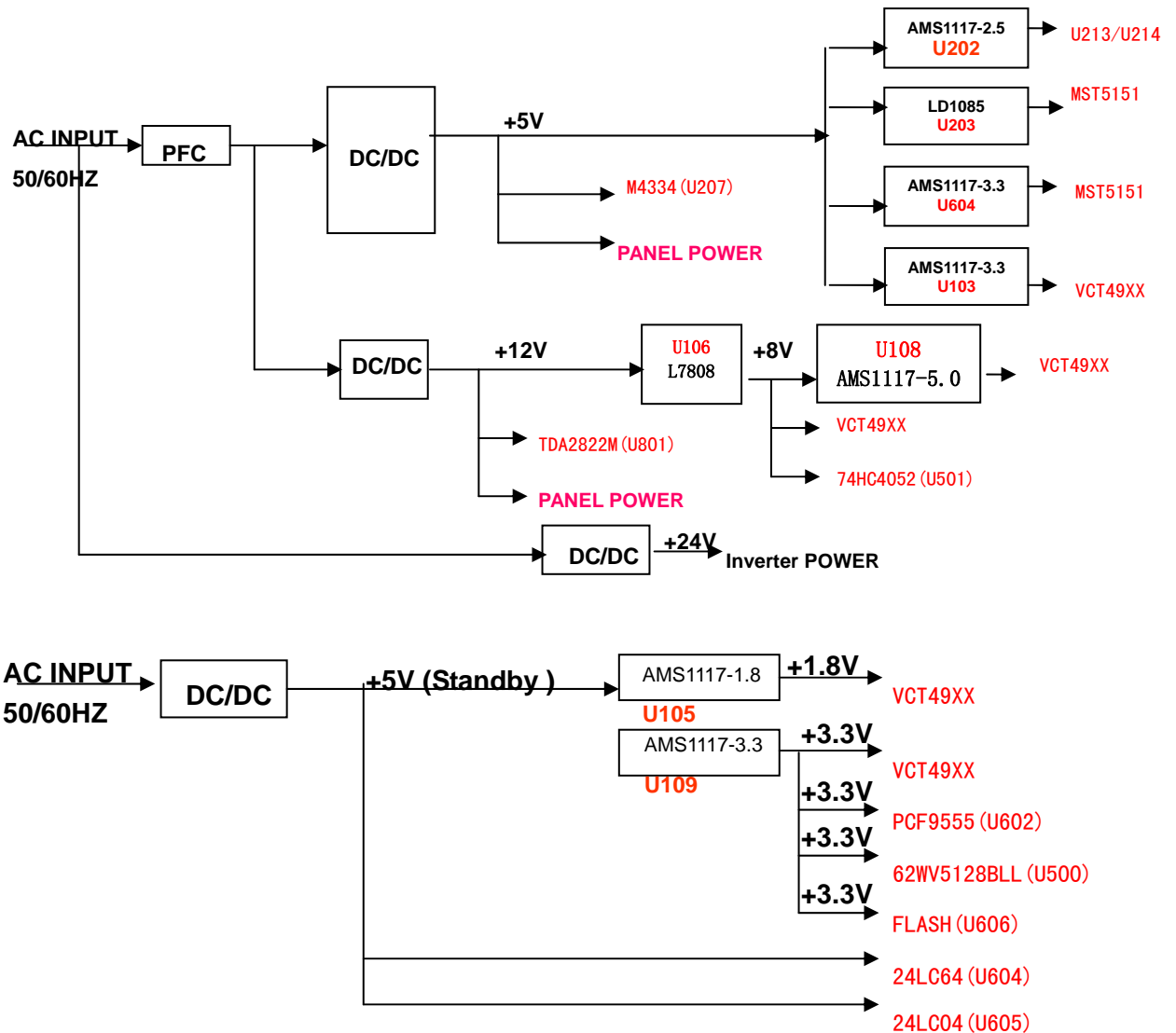
4-3 Audio Processing Part



4-4 I2C Controlling Part



4-5 Power Part



5. Service Mode And Adjustment

5-1 Service Mode

Use the remote control, first open MAIN MENU with MENU button, and choose AUDIO SETTING with the CHANNEL UP/DOWN button, then choose the BALANCE with VOLUME UP/DOWN, In this condition, press 0、5、3、2, you can enter factory menu.

5-1-1、Fac. Menu

LCD TV Service Manual

Service Mode (TV)

White Balance
Additional Settings
Options 1
Options 2
Audio Options
Deviation settings
DRX
NVM Edit
NVM Initialize
MinMidMax Init
Scaler
Set channel
ToFAC <0>

LCD26/3233EU
 20060719

White Balance (TV)

Rgain +126
Ggain +121
Bgain +115
Roffset +119
Goffset +122
Boffset <+121>
WBH-Bright <+100>
WBH-Contrast <+100>
WBH-Satiation <+100>
WBL-Bright <+80>
WBL-Contrast <+80>
WBL-Satiation <+80>

Back: i

Exit: ok

Additional settings (TV)

DYNFOC-Vertical(PWMV) <+1>
DYNFOC-Norstart(DFHB) <+1>
DYNFOC-Horstop(DFHE) <+1>
OSD H-shift <+205>
OSD H-shift split screen <+220>
OSD V-shift <+33>
OSD pixel clock <+72>
Caption status Display <NO>
XDS Data Display <NO>

Back: i

Exit: ok

Options 1 (TV)

Front AV(Ext 3) <Yes>
Front AV Y/C(Ext 4) <No>
Front AV(Ext 5) <No>
DVB Module <No>
Picture Tube 16:9 <Yes>
Blue Screen <No>
Picture Mute <No>
UHF Only <No>
Search For BG,DK,I <Yes>
Search For L/L' <No>
Search For M <Yes>
Pref.Search Standrd <BG,DK,I>
Station Ident <Yes>
ATS Delay Time (ms) <50>

Back: i

Exit: ok

LCD TV Service Manual

Options 2 (TV)

JPEG Viewer	<NO>
Show Versions of Ics	
GTI Enable	<Yes>
LTI Enable	<No>
Scaler Chip Select	<6151>
Logo	<hisense>

Back: i

Exit: ok

Audio Options (TV)

Equslizer	<Yes>
Show Volume bar	<Yes>
Auto Store Volume	<No>
BBE	<No>
Voice	<No>
SRS WOW	<No>
ACF	<No>
VolumeLim	<+100>
Volume 0	<-115>
Volume 1	<-60>
Volume 20	<-30>
Volume 50	<-15>
Volume 100	<-2>

Back: i

Exit: ok

Deviaton Settings (TV)

MJapa	<+24>
BTSC	<+24>
DK Dual	<+24>
BG	<+24>
NICAM L	<+24>
NICAM I	<+24>
DK NICAM	<+24>
FM Radio	<+24>

Back: i

Exit: ok

DRX (TV)

Standard Select	<BG,DK>
Top setting	<+7>
Video Peaking	<0>
SIP Reference	<+2>

Back: i

Exit: ok

LCD TV Service Manual

NVM EDit (TV)

NVM_edit addr.(hex) _ _ _ _
NVM_edit data.(hex) _ _
WARNing: Editing may cause
defects!
NVM_data dev:000 bin:00000000

A: B: C; D: E; F; G:

Back: i

Exit: ok

NVM Initialize (TV)

Initialize NVM from Rom
Continue:LEFTkey Exit: Mkey

Back: i

Exit: ok

MinMidmax Init (TV)

Brightness 0 <-252>
Brightness 1 <-100>
Brightness 50 <+100>
Brightness 100 <+252>
Contrast 0 <0>
Contrast50 <+30>
Contrast 100 <+63>
Picture Mode_Bright_Bri <+125>
Picture Mode_Bright_Con <+153>
Picture Mode_Standard_Bri<+125>
PictureMode_Standard_Con<+145>
Picture Mode_Soft_Bri <+125>
Picture Mode_Soft_Con <+125>
Other More

Back: i

Exit: ok

Scaler (TV)

ADC Rgain <+128>
ADC Ggain <+128>
ADC Bgain <+128>
ADC Roffset <+128>
ADC Goffset <+128>
ADC Boffset <+128>

Back: i

Exit: ok



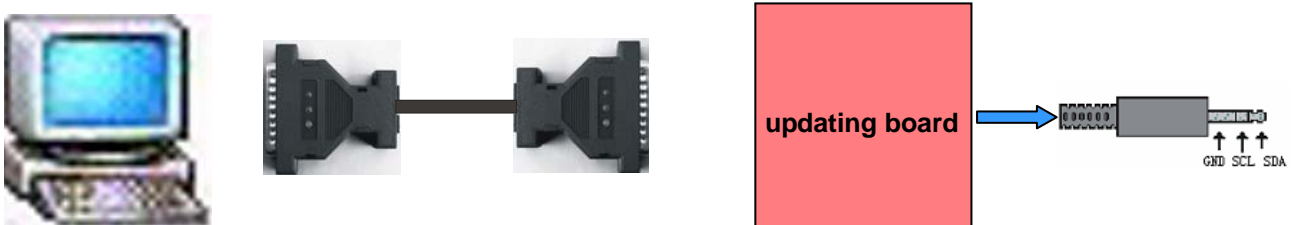
6. Software Updating

6-1、Updating Cable

- You can update our LCD' s software through a special I2C cable(show as below)

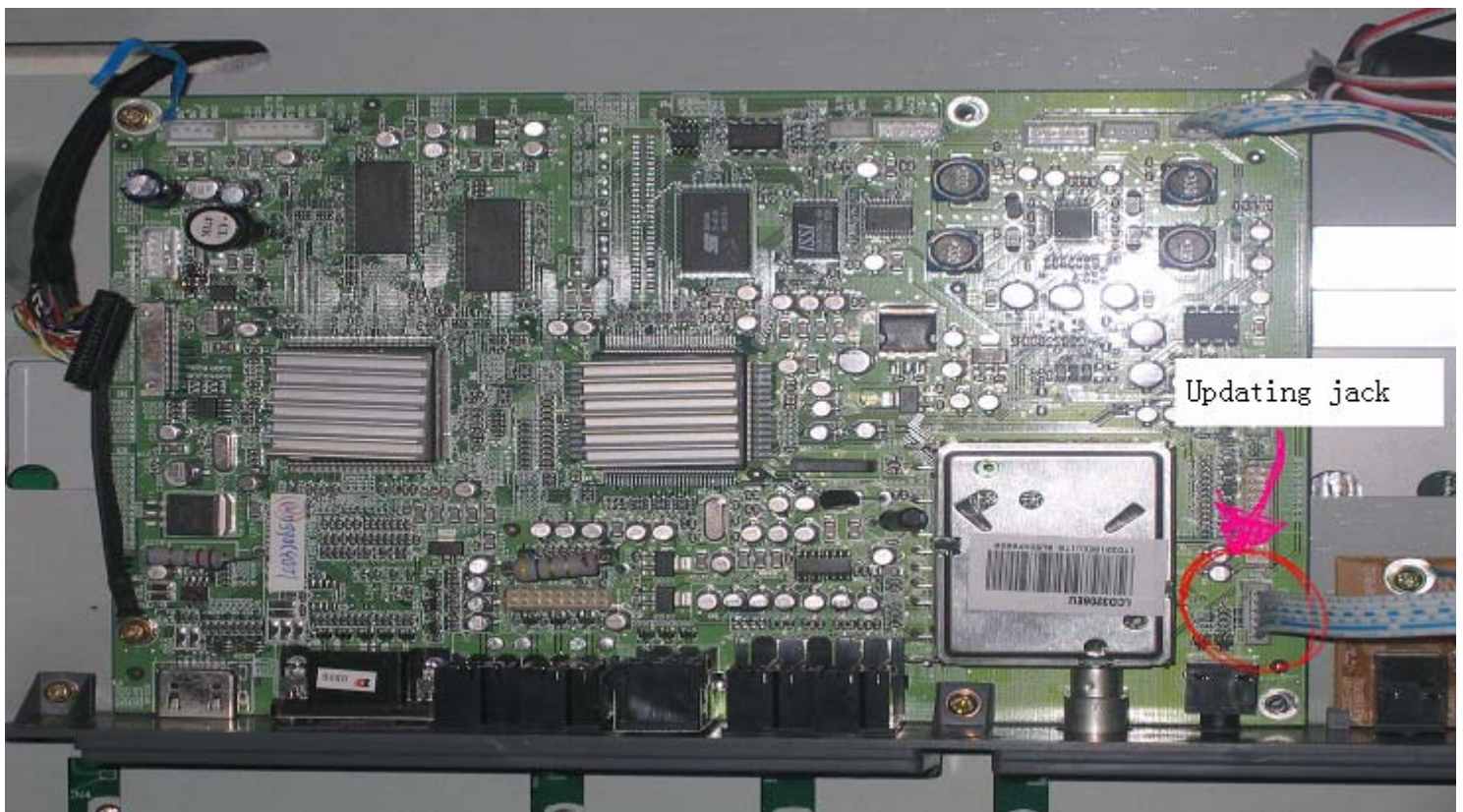
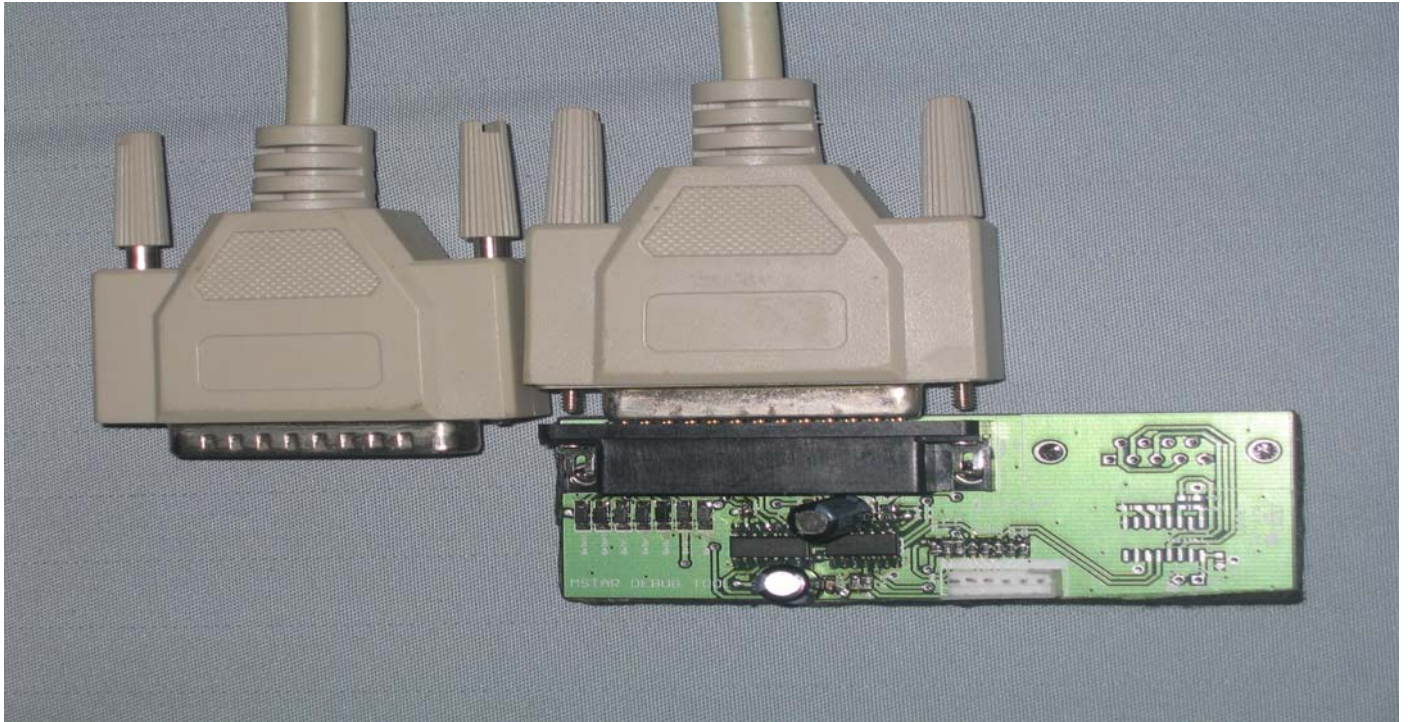


- This I2C cable includes a updating board、 a 3.5mm Stereo Earphone plug and 3 wires
Built the cable as show



6-2、 LT3214S/ LT2614S Software Updating Operation

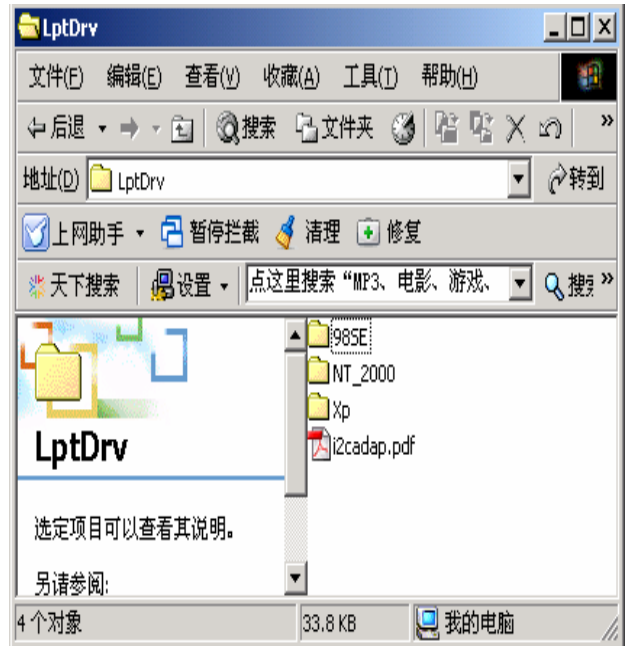
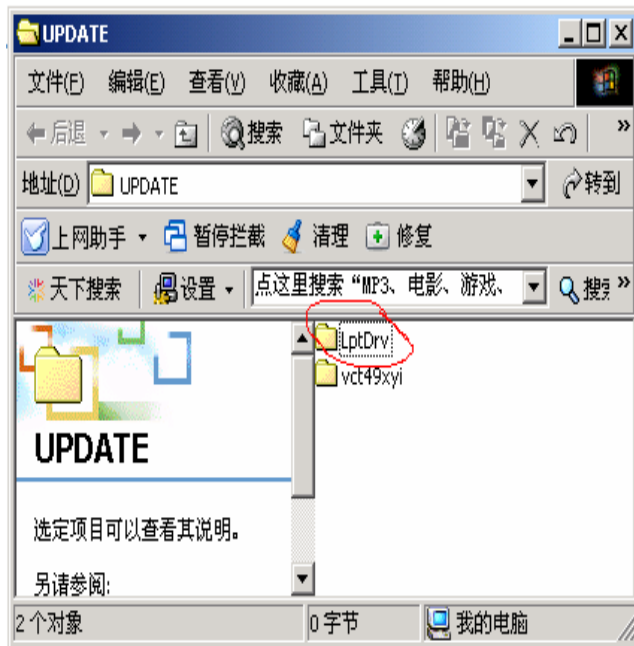
LCD TV Service Manual



LPT Setup

The first step:

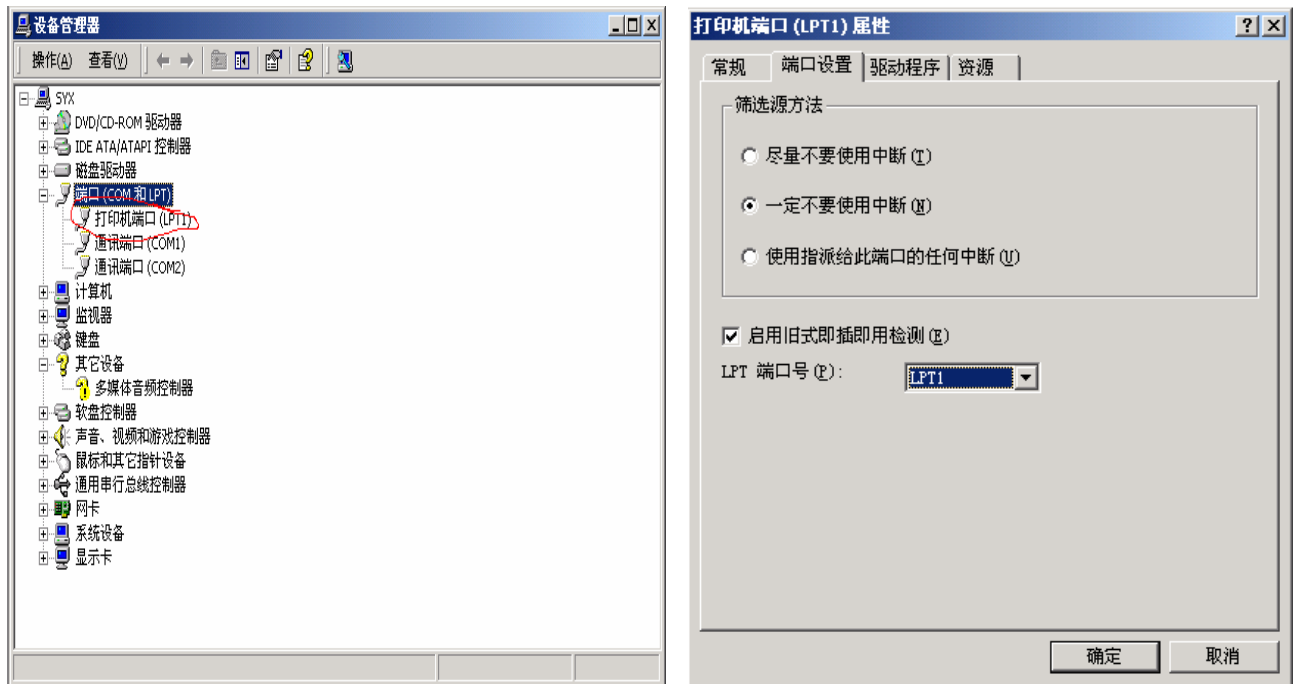
First double click the “LPTDrv” folder, you should select a LPT driving software in the folder.



The second step:

When the LPT setup is OK, Please open the system manager and select LPT1.

LCD TV Service Manual

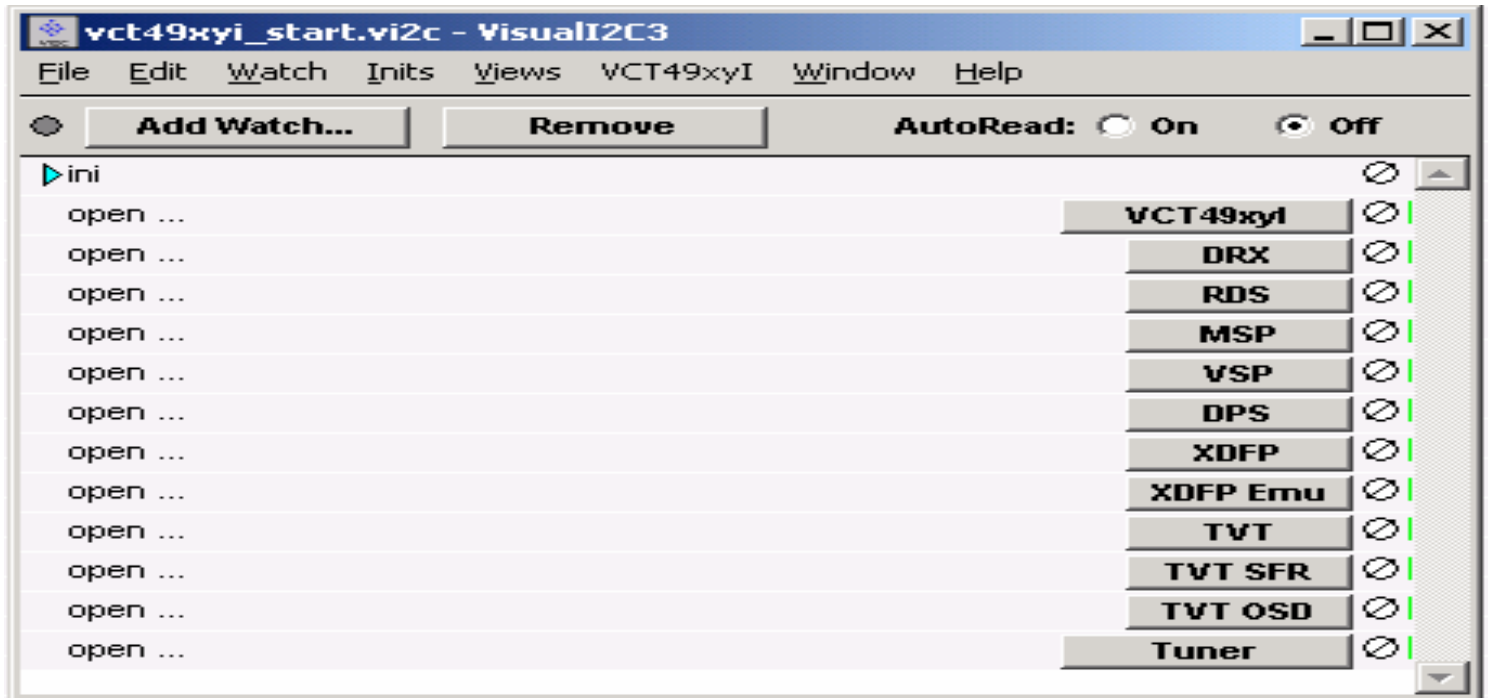


Updating Operation:

The first step:

First turn on the TV, then plug one end of the serial cable to the LPT port of PC and other end to I2C port of TV. and double click the file vct49xyi_start.exe in “vct49xyi” folder, A dialog will come up like sub picture.

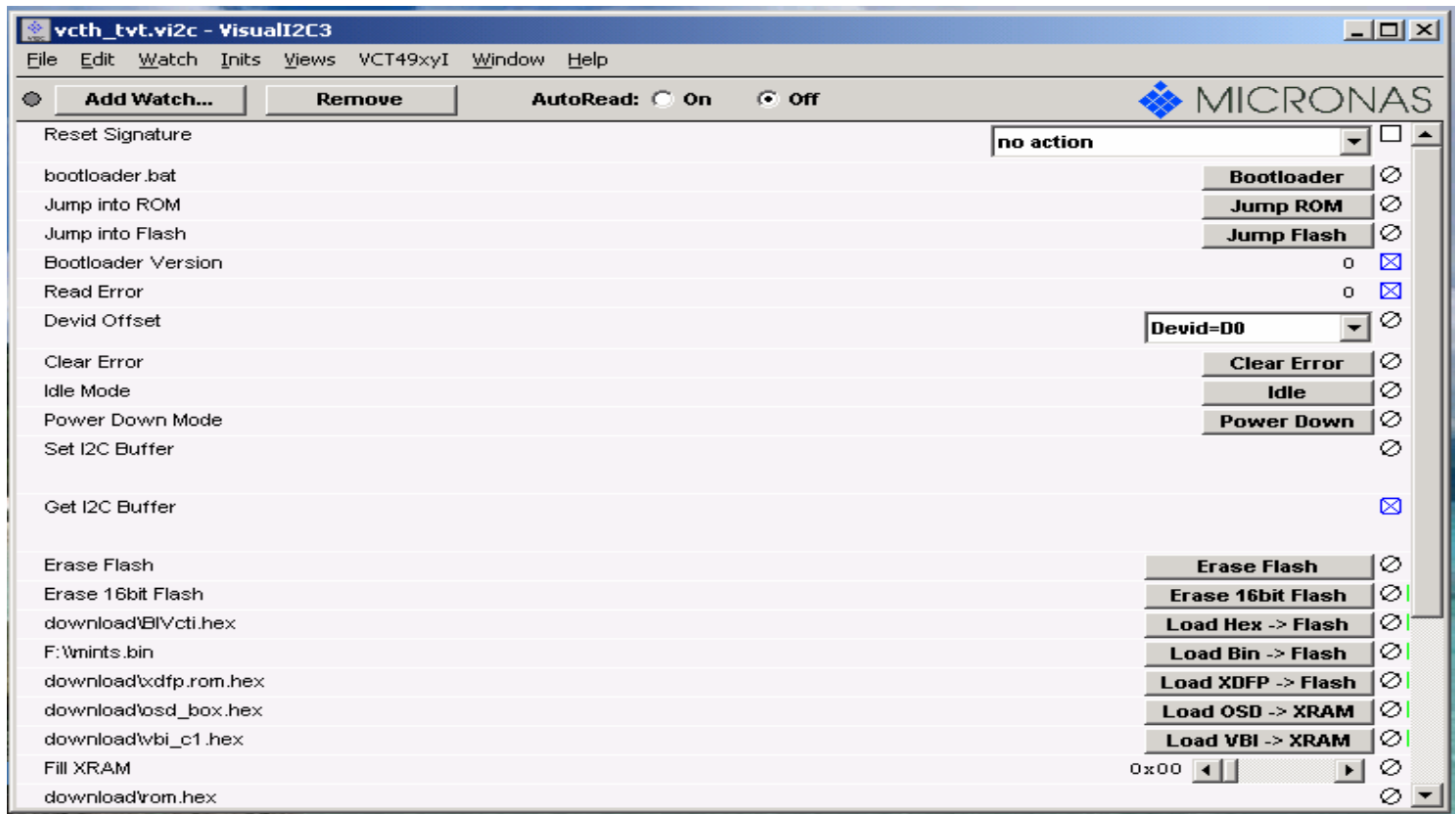
LCD TV Service Manual



The second step:

click the “TVT” button on the bottom, A dialog will come up like sub picture.

LCD TV Service Manual



The second step:

Double click the “F:\\mints.bin” , A dialog will come up like sub picture.

Note:

LCD colour TV software updating setup

1.File->Preferences->LPT Preferences

LPT:The current LPT

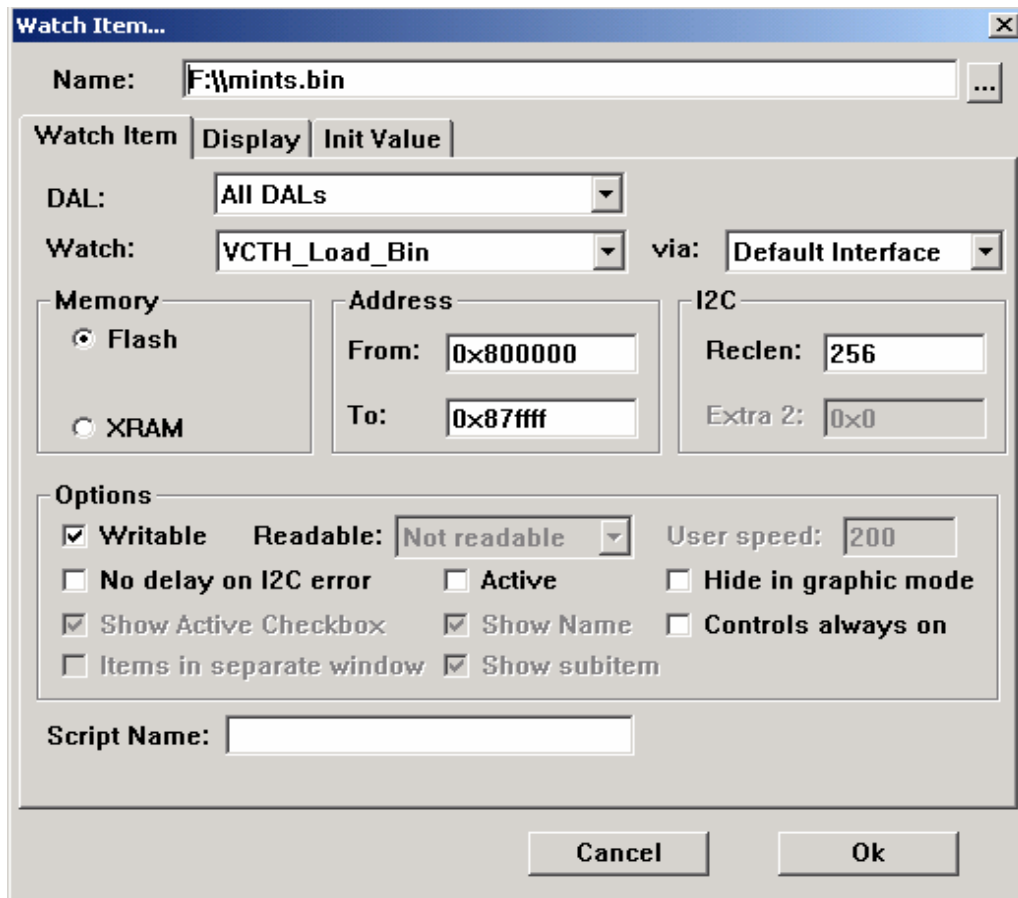
Delay:0

Time out :300

2.Name:The folder of Updating software

Address : From 0x800000

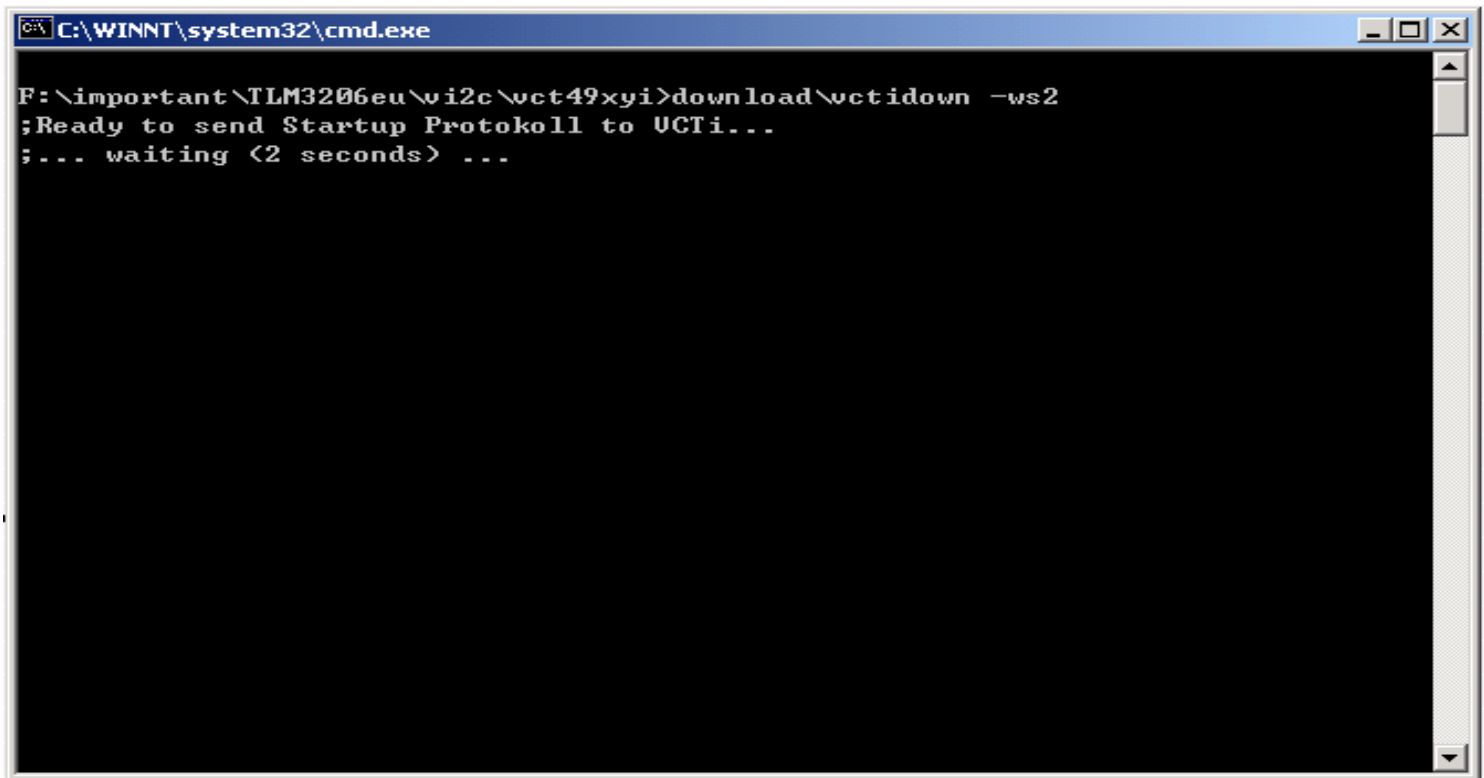
To 0x87ffff



The third step:

After clicking the “TVT” button on the bottom, A DOS interface will come up like sub picture. If the word following “...” is “OK” , it shows that the communication between the LCD colour TV and compute is OK, or it needs to check the connect of I2C.

LCD TV Service Manual



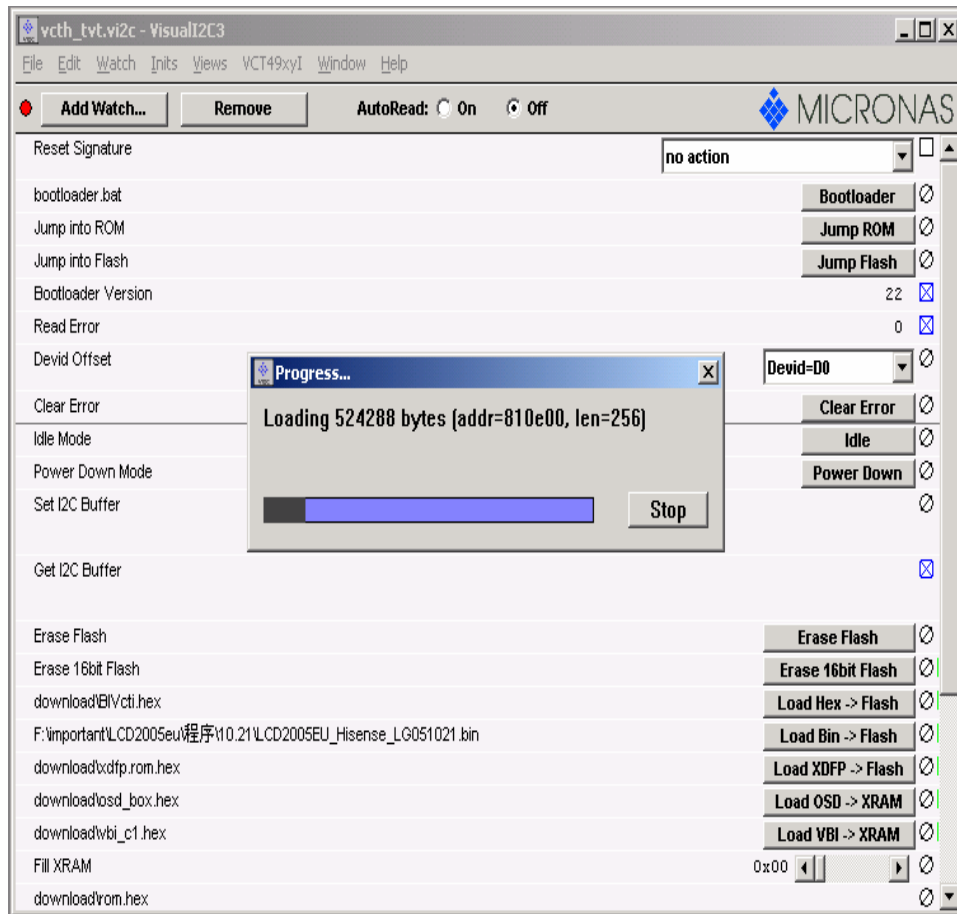
```
C:\WINNT\system32\cmd.exe

F:\important\TLM3206eu\wi2c\vct49xyi>download\vctidown -ws2
;Ready to send Startup Protokoll to UCTi...
;... waiting (2 seconds) ...
```

The fourth step:

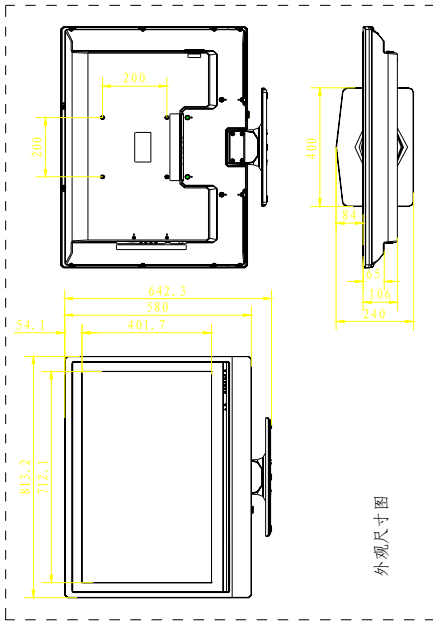
1. After the DOS interface disappeared. click the “Bootloder Version ” button, it ought to shows “22” without red words such as “No Acknowledge from Stave” .
2. Wait for 30 seconds after clicking the “Erase 16Bit Flash ” button
3. If the red words such as “No Acknowledge from Stave” don’ t appear After the updating progress, that the software updating is OK.

LCD TV Service Manual

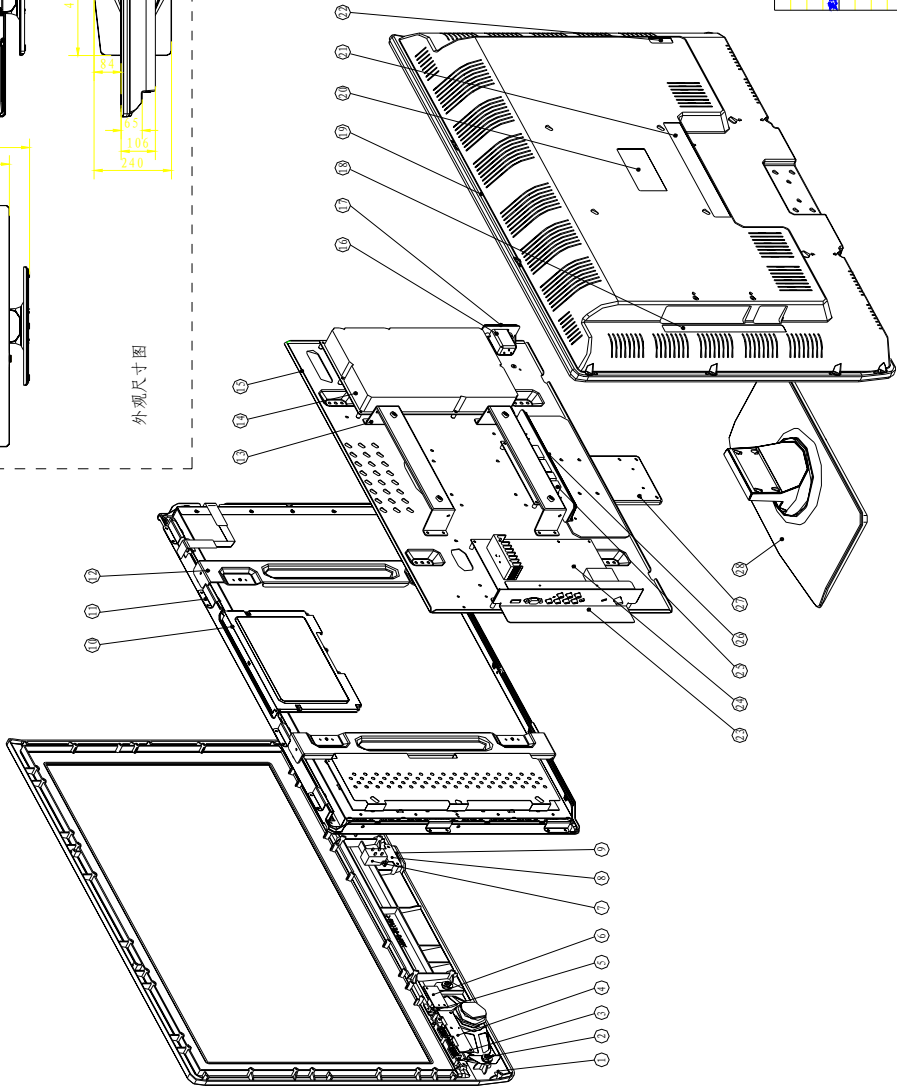


7. LT3214S/LT2614S Explode View And Bom

LCD TV Service Manual



外观尺寸图



28	W06.121.024	base	1
27	RSAG8.038.705	base pins	1
26	RSAG8.081.138	terminal block	1
25	RSAG2.908.871	start board	1
24	RSAG2.908.685-21	main board	1
23	RSAG8.038.711	terminal block	1
22	RSAG8.804.371	function plate	1
21	E/RS88.808.1069	function plate	1
20	E/RS88.807.2050	nameplate	1
19	RSAG8.074.303	back cover	1
18	E/RS88.808.1067	function plate	1
17	RSAG8.081.090	terminal block	1
16	LC-970	power terminal	1
15	RSAG6.150.142	shielding case	1
14	RSAG2.908.827-3	power board	1
13	RSAG8.038.572	mounting bracket	2
12	RSAG8.038.702	bracket	2
11	RSAG8.038.704	bracket	10
10	V32081-L01 C3\JK	lcd	1
9	RSAG8.337.024	button	1
8	RSAG8.038.461	power bracket	1
7	KDC-104	power switch	1
6	RSAG2.908.800	PC board	1
5	RSAG8.640.036	lens	1
4	RSAG2.908.801-1	key board	1
3	RSAG6.356.013	key	1
2	YDT615E-13888-F	speaker	2
1	RSAG8.074.301	front cover	1

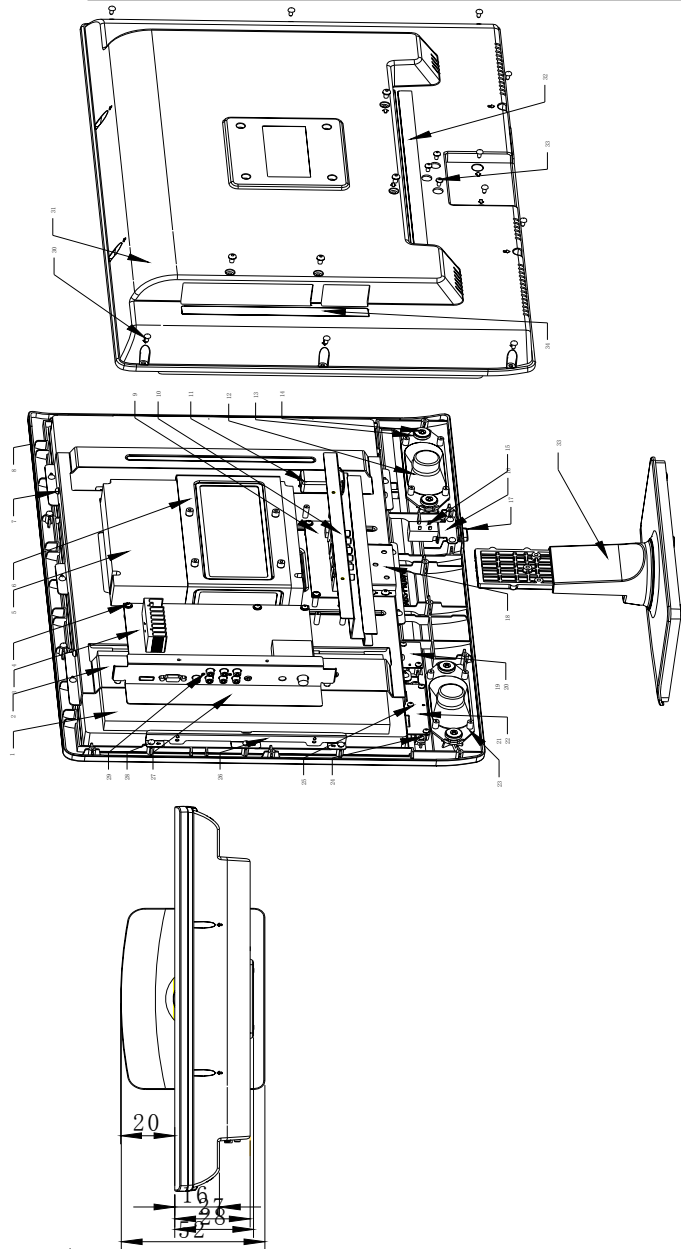
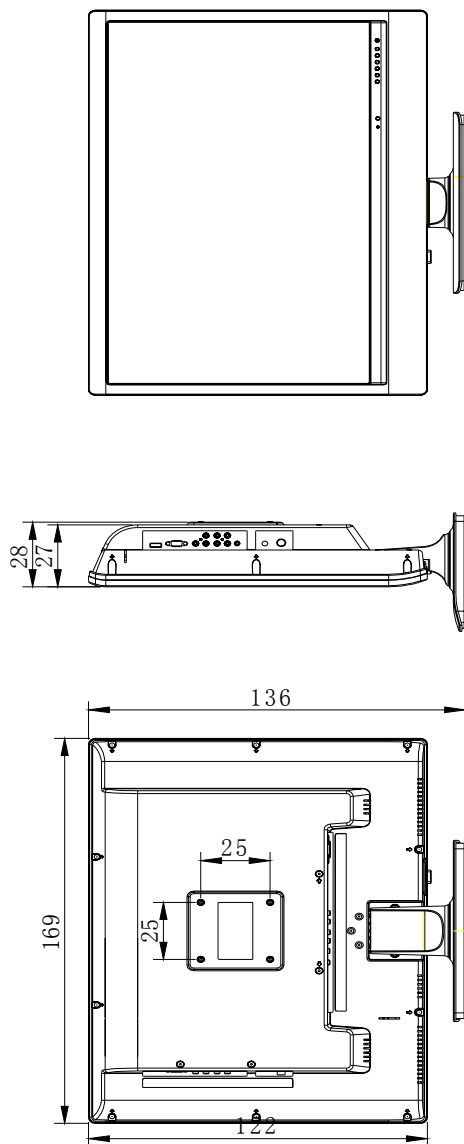
爆炸图 LCD3233EU			
序号	图号	名称	数量
1	2	3	4
5	6	7	8
9	10	11	12
13	14	15	16
17	18	19	20
21	22	23	24
25	26	27	28
29	30	31	32
33	34	35	36
37	38	39	40
41	42	43	44
45	46	47	48
49	50	51	52
53	54	55	56
57	58	59	60
61	62	63	64
65	66	67	68
69	70	71	72
73	74	75	76
77	78	79	80
81	82	83	84
85	86	87	88
89	90	91	92
93	94	95	96
97	98	99	100
101	102	103	104
105	106	107	108
109	110	111	112
113	114	115	116
117	118	119	120
121	122	123	124
125	126	127	128
129	130	131	132
133	134	135	136
137	138	139	140
141	142	143	144
145	146	147	148
149	150	151	152
153	154	155	156
157	158	159	160
161	162	163	164
165	166	167	168
169	170	171	172
173	174	175	176
177	178	179	180
181	182	183	184
185	186	187	188
189	190	191	192
193	194	195	196
197	198	199	200
201	202	203	204
205	206	207	208
209	210	211	212
213	214	215	216
217	218	219	220
221	222	223	224
225	226	227	228
229	230	231	232
233	234	235	236
237	238	239	240
241	242	243	244
245	246	247	248
249	250	251	252
253	254	255	256
257	258	259	260
261	262	263	264
265	266	267	268
269	270	271	272
273	274	275	276
277	278	279	280
281	282	283	284
285	286	287	288
289	290	291	292
293	294	295	296
297	298	299	300
301	302	303	304
305	306	307	308
309	310	311	312
313	314	315	316
317	318	319	320
321	322	323	324
325	326	327	328
329	330	331	332
333	334	335	336
337	338	339	340
341	342	343	344
345	346	347	348
349	350	351	352
353	354	355	356
357	358	359	360
361	362	363	364
365	366	367	368
369	370	371	372
373	374	375	376
377	378	379	380
381	382	383	384
385	386	387	388
389	390	391	392
393	394	395	396
397	398	399	400
401	402	403	404
405	406	407	408
409	410	411	412
413	414	415	416
417	418	419	420
421	422	423	424
425	426	427	428
429	430	431	432
433	434	435	436
437	438	439	440
441	442	443	444
445	446	447	448
449	450	451	452
453	454	455	456
457	458	459	460
461	462	463	464
465	466	467	468
469	470	471	472
473	474	475	476
477	478	479	480
481	482	483	484
485	486	487	488
489	490	491	492
493	494	495	496
497	498	499	500
501	502	503	504
505	506	507	508
509	510	511	512
513	514	515	516
517	518	519	520
521	522	523	524
525	526	527	528
529	530	531	532
533	534	535	536
537	538	539	540
541	542	543	544
545	546	547	548
549	550	551	552
553	554	555	556
557	558	559	560
561	562	563	564
565	566	567	568
569	570	571	572
573	574	575	576
577	578	579	580
581	582	583	584
585	586	587	588
589	590	591	592
593	594	595	596
597	598	599	600
601	602	603	604
605	606	607	608
609	610	611	612
613	614	615	616
617	618	619	620
621	622	623	624
625	626	627	628
629	630	631	632
633	634	635	636
637	638	639	640
641	642	643	644
645	646	647	648
649	650	651	652
653	654	655	656
657	658	659	660
661	662	663	664
665	666	667	668
669	670	671	672
673	674	675	676
677	678	679	680
681	682	683	684
685	686	687	688
689	690	691	692
693	694	695	696
697	698	699	700
701	702	703	704
705	706	707	708
709	710	711	712
713	714	715	716
717	718	719	720
721	722	723	724
725	726	727	728
729	730	731	732
733	734	735	736
737	738	739	740
741	742	743	744
745	746	747	748
749	750	751	752
753	754	755	756
757	758	759	760
761	762	763	764
765	766	767	768
769	770	771	772
773	774	775	776
777	778	779	780
781	782	783	784
785	786	787	788
789	790	791	792
793	794	795	796
797	798	799	800
801	802	803	804
805	806	807	808
809	810	811	812
813	814	815	816
817	818	819	820
821	822	823	824
825	826	827	828
829	830	831	832
833	834	835	836
837	838	839	840
841	842	843	844
845	846	847	848
849	850	851	852
853	854	855	856
857	858	859	860
861	862	863	864
865	866	867	868
869	870	871	872
873	874	875	876
877	878	879	880
881	882	883	884
885	886	887	888
889	890	891	892
893	894	895	896
897	898	899	900
901	902	903	904
905	906	907	908
909	910	911	912
913	914	915	916
917	918	919	920
921	922	923	924
925	926	927	928
929	930	931	932
933	934	935	936
937	938	939	940
941	942	943	944
945	946	947	948
949	950	951	952
953	954	955	956
957	958	959	960
961	962	963	964
965	966	967	968
969	970	971	972
973	974	975	976
977	978	979	980
981	982	983	984
985	986	987	988
989	990	991	992
993	994	995	996
997	998	999	1000

备注

备注

备注

LCD TV Service Manual



Part No.	Part Name	Quantity	Unit
1	Power supply	1	PCB
2	Main board	1	PCB
3	T-Con board	1	PCB
4	LCD panel	1	PCB
5	Back cover	1	PCB
6	Stand	1	PCB
7	Remote control	1	PCB
8	Head	1	PCB
9	Neck	1	PCB
10	Base	1	PCB
11	Speaker	1	PCB
12	Tuner	1	PCB
13	Decoder	1	PCB
14	Processor	1	PCB
15	Memory	1	PCB
16	Input/Output	1	PCB
17	Antenna	1	PCB
18	Cable	1	PCB
19	Screw	1	PCB
20	Nut	1	PCB
21	Washer	1	PCB
22	Gasket	1	PCB
23	Seal	1	PCB
24	Label	1	PCB
25	Marking	1	PCB

LCD333U

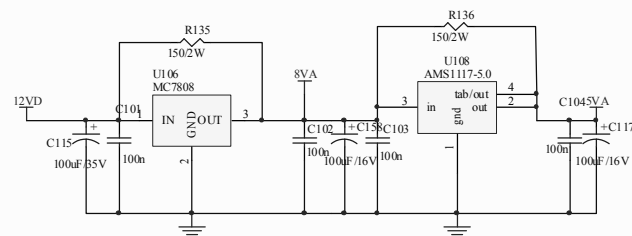
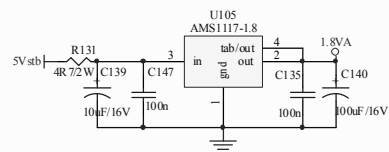
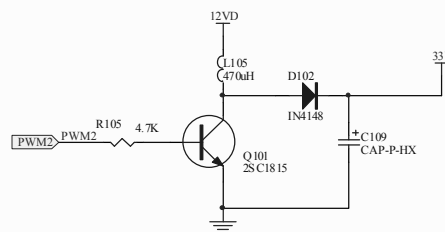
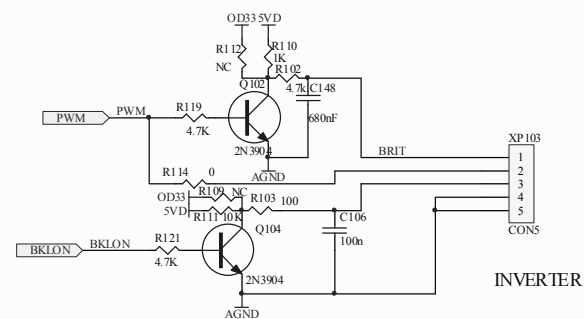
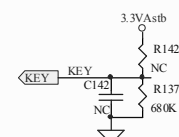
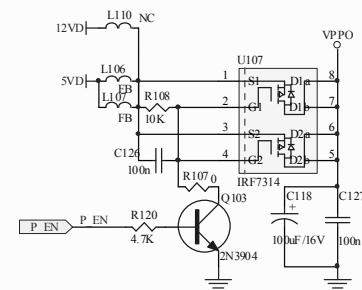
8. Spare Parts List

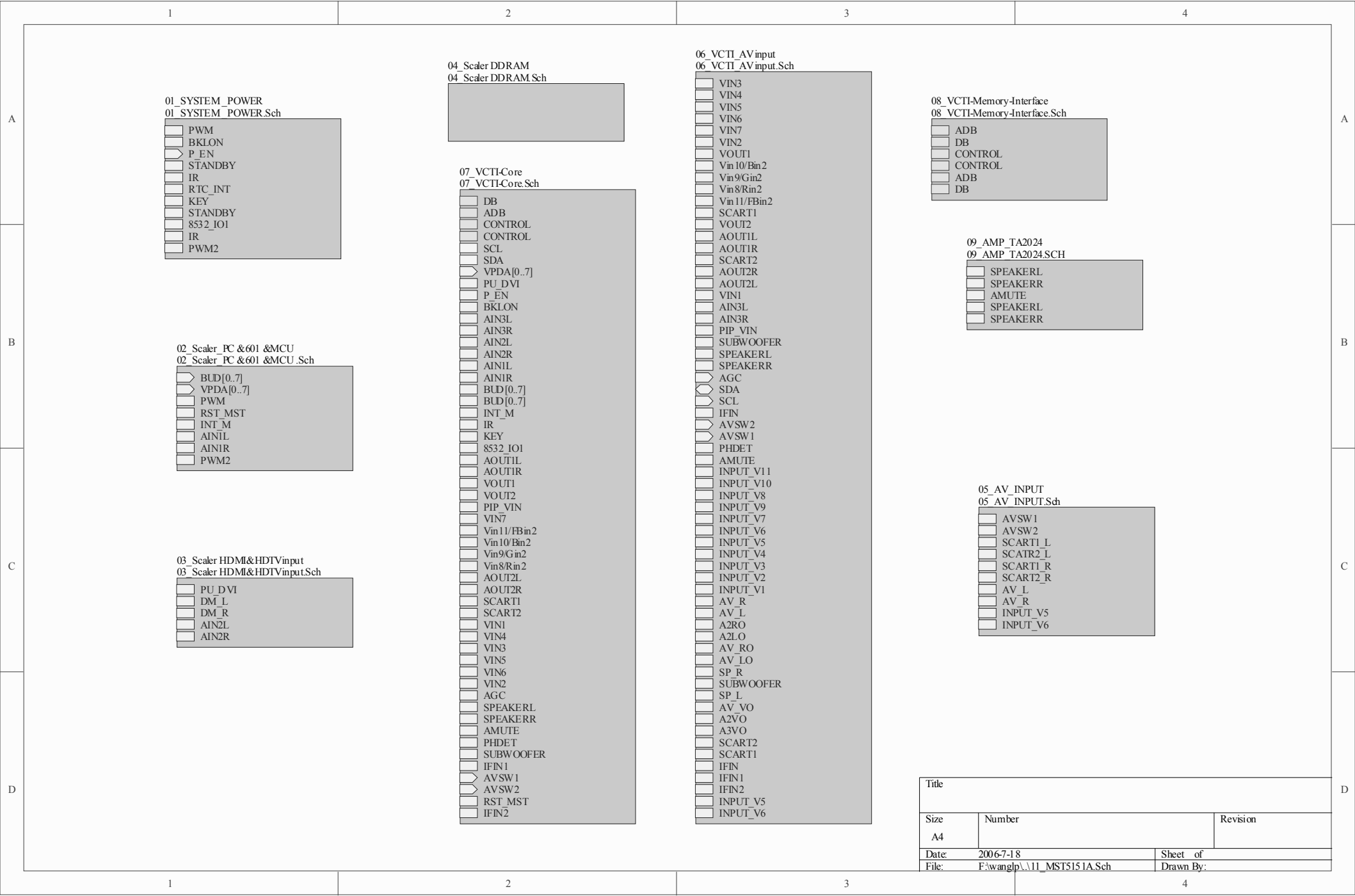
please refer to Spare Parts List.

9. Troubleshooting

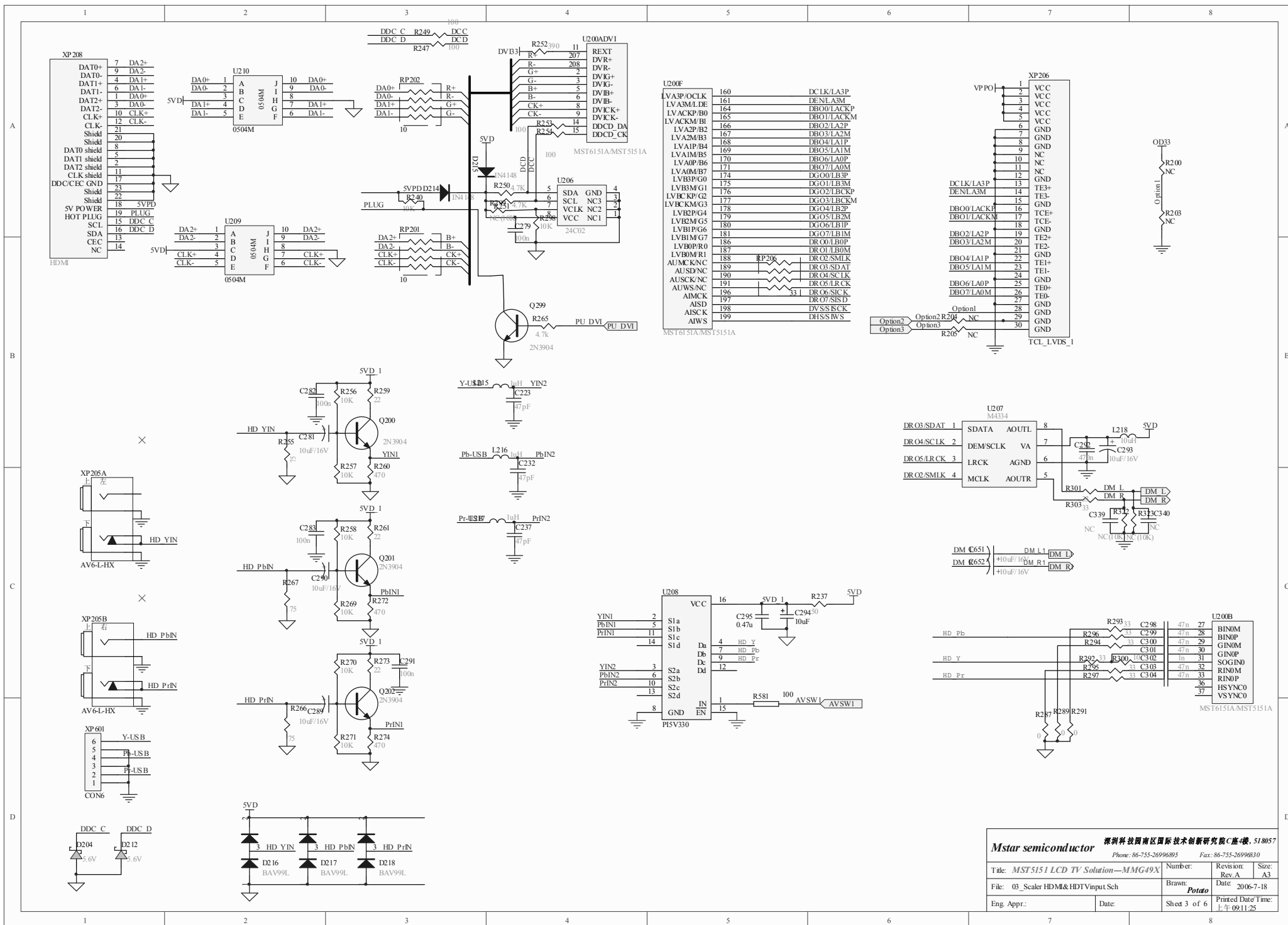
No.	Trouble	Measure
1	Turn on the TV, The LED is red, no display on screen	replace the main board or updating the software. (it 's the software is wrong)
2	Turn on the TV, The LED is blue, but no picture or/and no sound	you should to replace the main board.
3	In TV state, can not to tuning	you should to replace the main board.
4	No teletext	You should to replace the main board. (the teletext IC bad)
5	No sound	You should to replace the main board.
6	can not to updating software	You should to replace the main board
7	No reaction with PC	You should change the main board

10. Circuit Diagram

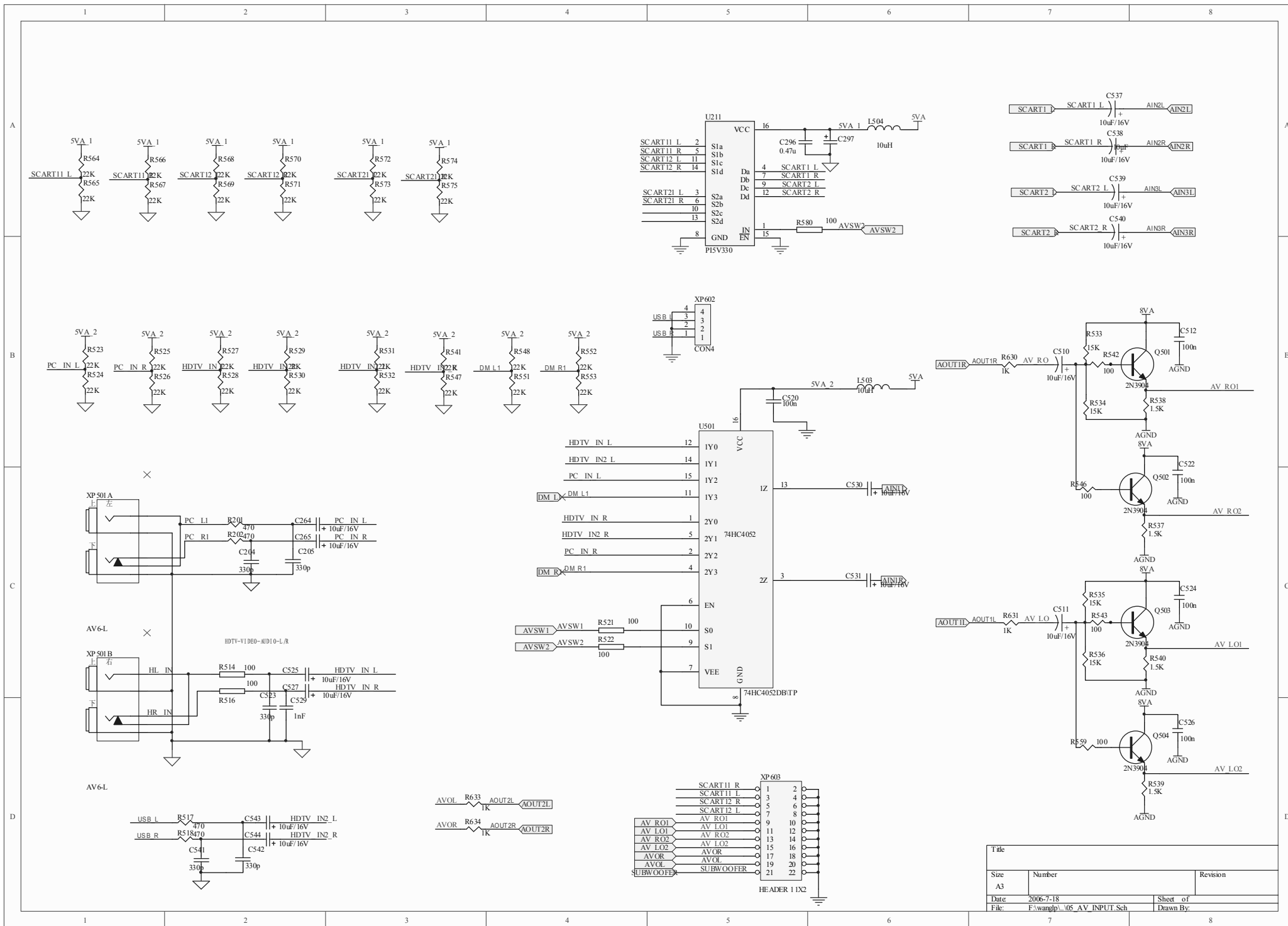












Title		
Size	Number	Revision
A3		
Date	2006-7-18	Sheet of
File	F:\wangpl\05_AV_INPUT.Sch	Drawn By:



