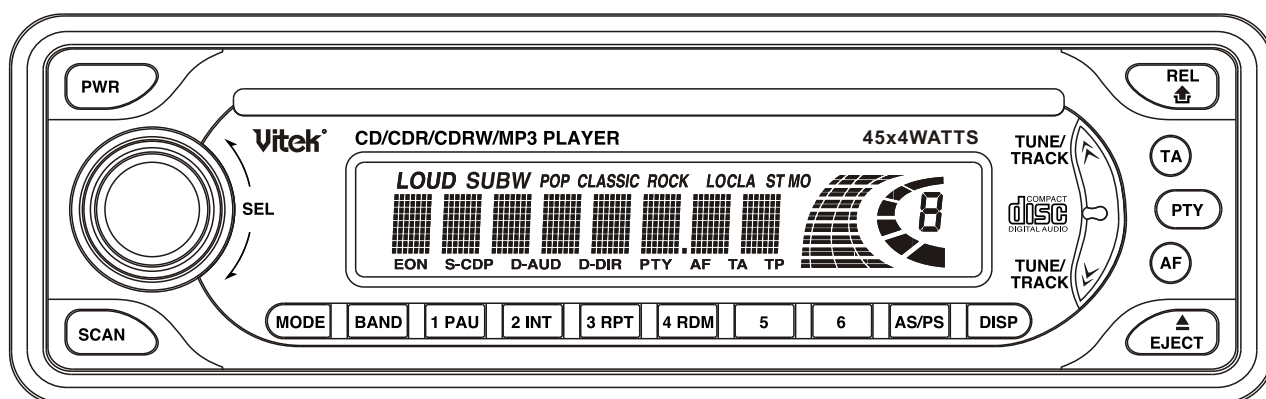


Vitek®

SERVICE MANUAL



MODEL:VT-3621

2004-3-1

WiWi Industries Limited

Buyer: VITEK

Engineering Department

Model: CD-3987

Bill of Materials

Title: VT-3621 PLL AM/FM OIRT RADIO CD-MP3 CAR CD PLAYER W/45Wx4 POWER,2-LINEOUT

Checked By:(Elect) C.K.HAN Checked By:(Mech) _____ Approved By: _____

NO	ITEM CODE	DESCRIPTION	QTY	SYMBOL
1	001-3984S-N80	P.C.B MAIN BOARD	1	
2	001-0000S-B90	P.C.B FILTER BOX	1	
3	002-07900-H00	I.C DSC-7900	1	
4	002-2313L-B00	I.C PT2313L	1	必定用这个牌子IC
5	002-04558-G00	I.C TJM4558	2	
6	002-01140-A09	I.C LA1140	1	IC201
7	002-03370-A09	I.C LA3370	1	IC301
8	002-07384-J06	I.C TDA7384	1	U1
9	002-07035-T00	I.C KIA7035	1	Q30
10	002-78L05-F00	I.C KIA78L05	1	Q29
11	003-3199Y-H03	TRANSISTOR C3199 NPN TO-92S	14	Q12.24.25.6.17.4 18.19.20.13.7.33.3.37
12	003-01303-D00	TRANSISTOR D1303	4	Q1.8.9.10
13	003-01368-C00	TRANSISTOR B1368	1	Q23
14	003-01923-A00	TRANSISTOR C1923	1	Q2
15	003-0966Y-A02	TRANSISTOR A966	1	Q11
16	003-1267Y-A00	TRANSISTOR KTA1267Y	2	Q5.36
17	003-1271Y-A03	TRANSISTOR A1271	1	Q14
18	003-3203Y-D03	TRANSISTOR C3203	3	Q15.26.28
19	004-04001-000	DIODE IN4001	1	FILTER BOX
20	004-04148-000	DIODE IN4148	23	D1.4.6.7.10.11.41.25.27. 16.17.3.12.34.35.39.28.31. 23.21.8.13.14
21	005-00039-A00	ZENER DIODE 1/2W 3.9V	1	ZD7
22	005-00075-A00	ZENER DIODE 1/2W 7.5V	1	ZD6

NO	ITEM CODE	DESCRIPTION	QTY	SYMBOL
23	005-00100-A00	ZENER DIODE 1/2W 10V	2	ZD5.3
24	005-00051-A00	ZENER DIODE 1/2W 5.1V	3	ZD1.2.?
25	006-04500-000	CRYSTAL 4.5MHz	1	ZT1
26	007-05046-7GY	I.F.T 7x7mm K5046 GREY	1	T1
27	009-02027-A02	TUNER FM (OIRT) KCF-2027F/SV	1	
28	009-1019A-A01	TUNER AM CET-1019A	1	
29	010-A0222-000	CHOCK COIL 22mH	1	L1
30	011-A010F-200	RES 1/2W +-5% 1 OHM	1	R168
31	011-A220D-200	RES 1/4W +-5% 22 OHM	1	R54
32	011-A100A-200	RES 1/16W +-5% 10 OHM	2	R98.116
33	011-A101A-200	RES 1/16W +-5% 100 OHM	3	R118.119.120
34	011-A102A-200	RES 1/16W +-5% 1K OHM	12	D5.R37.38.26.96.81. 88.32.83.34.144.1
35	011-A103A-200	RES 1/16W +-5% 10K OHM	20	R86.101.77.64.141. 148.149.142.140.4.115.117. 33.60.61.56.73.41.150.70
36	011-A104A-200	RES 1/16W +-5% 100K OHM	3	R97.99.21
37	011-A105A-200	RES 1/16W +-5% 1M OHM	2	R103.107
38	011-A122A-200	RES 1/16W +-5% 1.2K OHM	2	R134.135
39	011-A123A-200	RES 1/16W +-5% 12K OHM	2	R153.66
40	011-A152A-200	RES 1/16W +-5% 1.5K OHM	4	R85.87.82.79
41	011-A153A-200	RES 1/16W +-5% 15K OHM	2	R12.11
42	011-A151A-200	RES 1/16W +-5% 150 OHM	1	R80
43	011-A182A-200	RES 1/16W +-5% 1.8K OHM	1	R3
44	011-A181A-200	RES 1/16W +-5% 180 OHM	1	R53
45	011-A221A-200	RES 1/16W +-5% 220 OHM	2	R90.22
46	011-A222A-200	RES 1/16W +-5% 2.2K OHM	4	R151.152.95.59
47	011-A223A-200	RES 1/16W +-5% 22K OHM	14	R15.19.114.8.9.10.74. 30.31.45.125.65.94.63
48	011-A224A-200	RES 1/16W +-5% 220K OHM	2	R102.18
49	011-A330A-200	RES 1/16W +-5% 33 OHM	4	R6.28.17.76
50	011-A331A-200	RES 1/16W +-5% 330 OHM	2	R7.5

NO	ITEM CODE	DESCRIPTION	QTY	SYMBOL
51	011-A332A-200	RES 1/16W +-5% 3.3K OHM	2	R29.25
52	011-A333A-200	RES 1/16W +-5% 33K OHM	2	R20.40
53	011-A334A-200	RES 1/16W +-5% 330K OHM	3	R23.57.58
54	011-A471A-200	RES 1/16W +-5% 470 OHM	2	R84.91
55	011-A472A-200	RES 1/16W +-5% 4.7K OHM	3	R2.16.75
56	011-A473A-200	RES 1/16W +-5% 47K OHM	13	R89.50.49.69.43.47.154. 42.48.13.27.106.14
57	011-A562A-200	RES 1/16W +-5% 5.6K OHM	11	R109.127.35.36.128.110.108. 126.129.111.100
58	011-A561A-200	RES 1/16W +-5% 560 OHM	3	R156.157.105
59	011-A681A-200	RES 1/16W +-5% 680 OHM	2	R143.147
60	011-A822A-200	RES 1/16W +-5% 8.2K OHM	4	R51.55.46.44
61	011-A820A-200	RES 1/16W +-5% 82 OHM	1	R123
62	011-A821A-200	RES 1/16W +-5% 820 OHM	2	R62.67
63	012-2107C-300	ELEC CAP 100uF 16V 6x7mm	1	C82
64	012-C107C-300	ELEC CAP 100uF 16V 5x11mm	6	C55.74.104.99.52.125 C90.84.
65	012-C105F-300	ELEC CAP 1uF 50V 5x11mm	10	13.21.23.42.15.47.49.67
66	012-B106C-300	ELEC CAP 10uF 16V 4x7mm	1	C18
67	012-C106C-300	ELEC CAP 10uF 16V 5x11mm	5	C63.24.9.102.117
69	012-B335C-300	ELEC CAP 3.3uF 16V 4x7mm	1	C27
70	012-C335C-300	ELEC CAP 3.3uF 16V 5x11mm	1	C22
71	012-B474F-300	ELEC CAP 0.47uF 50V 4x7mm	5	C96.97.98.95.79
72	012-C475F-300	ELEC CAP 4.7uF 50V 5x11mm	11	C33.34.48.105.64.28.29.50.53.54.56
73	012-1476C-300	ELEC CAP 47uF 16V 5x7mm	1	C81
74	012-C476C-300	ELEC CAP 47uF 16V 5x11mm	6	C92.126.35.86.94.91
75	012-E477B-300	ELEC CAP 470uF 10V 6x12mm	1	C87
76	012-P108D-300	ELEC CAP 1000uF 25V 13x20mm	1	FILTER BOX
77	012-U228C-300	ELEC CAP 2200uF 16V 10x30mm	1	C62
78	013-A103A-400	MYLAR CAP +-10% 0.01uF	2	C19.78
79	013-A222A-400	MYLAR CAP +-10% 0.0022uF	1	C14
80	013-A223A-400	MYLAR CAP +-10% 0.022uF	2	C25.26

NO	ITEM CODE	DESCRIPTION	QTY	SYMBOL
81	013-A272A-400	MYLAR CAP +-10% 0.0027uF	2	C30.36
82	013-B102A-400	POLY CAP 1000PF	1	C20
83	014-A101C-500	CRE CAP +-10% 100PF	3	C16.11.?
84	014-A102C-500	CRE CAP +-10% 0.001uF	4	C80.58.59.77
85	014-A103C-500	CRE CAP +-10% 0.01uF	5	C40.75.41.106.75
86	014-A104C-500	CRE CAP +-10% 0.1uF	16	C43.44.45.46.37.38.110. 111.65.89.107.66.85.2.127.12
87	014-A121C-500	CRE CAP +-10% 120PF	4	C100.103.31.32
88	014-A150C-500	CRE CAP +-10% 15PF	1	C10
89	014-A222C-500	CRE CAP +-10% 0.0022uF	2	C108.109
90	014-A223C-500	CRE CAP +-10% 0.022uF	6	C61.3.5.4.7.88
91	014-A200C-500	CRE CAP +-10% 20PF	2	C1.39
92	014-A330C-500	CRE CAP +-10% 33PF	1	C101
	014-A472C-500	CRE CAP +-10% 0.0047uF	1	C60
93	014-A473C-500	CRE CAP +-10% 0.047uF	1	C6
94	015-H0103-E00	SEMIFIXED 10KB	1	VR3
95	015-H0203-E00	SEMIFIXED 20KB	2	VR2.4
96	015-H0503-E00	SEMIFIXED 50KB	1	VR1
97	016-C0300-000	TRIMMER CAP 30PF	1	C8
98	017-B0107-400	CER FILTER 10.7MJA	2	CF1.2
99	022-C7000-000	FAUSE 7A	1	
100	023-A0050-RD0	LED RED 5mm	1	D20
101	025-TA040-385	4P TACT SW 3.85mm 169G/F	1	
102	029-B0000-000	ANTENNA JACK DOUBLE SCREW	1	
103	033-S1000-BN0	28# 1P SHIELD 100mm	1	
104	035-B0400-BK1	JUMPER WIRE #20 40mm BLACK	1	
105	035-B0500-RD1	JUMPER WIRE #20 50mm RED	1	
	035-B0600-BK1	JUMPER WIRE #20 60mm BLACK	1	
106	034-A1612-006	I.S.O 16P W/WIRE 12P	1	
107	036-D0125-250	25P CONNECTOR PITCH P=1.25mm	1	

NO	ITEM CODE	DESCRIPTION	QTY	SYMBOL
108	036-J0250-120	DETACHABLE CON 12P SOCKET	1	
109	037-G0300-203	RCA 2xSH L=300mm GREY W/O H'ING	1	
110	042-30010-000	FUSE HOLDER	2	
111	201-EI240-000	CHOKE TRANS EI-24	1	
112	221-S0040-040	BARE WIRE D=0.4x40mm	70	
113	230-100BK-100	PLASTICTIE L=100mm	2	
114	231-P0060-130	RUBBER TUBE PVC D=13 L=50mm 1.0mm	1	
		FRONT PCB		
115	001-3987D-S20	P.C.B FRONT BOARD	1	
116	002-75823-H00	I.C LC75823ED	1	U1
117	008-80235-C00	LCD DISPLAY 80235BMTTN	1	
118	011-S000A-200	0805 RES CHIP +-5% 0 OHM	1	R33
119	011-S102A-200	0805 RES CHIP +-5% 1K OHM	2	R21.10
120	011-S152A-200	0805 RES CHIP +-5% 1.5K OHM	2	R22.11
121	011-S181A-200	0805 RES CHIP +-5% 180 OHM	2	R16.5
122	011-S221A-200	0805 RES CHIP +-5% 220 OHM	3	R3.6.17
123	011-S222A-200	0805 RES CHIP +-5% 2.2K OHM	2	R23.12
124	011-S331A-200	0805 RES CHIP +-5% 330 OHM	2	R7.18
125	011-S332A-200	0805 RES CHIP +-5% 3.3K OHM	2	R24.13
126	011-S471A-200	0805 RES CHIP +-5% 470 OHM	2	R8.19
127	011-S472A-200	0805 RES CHIP +-5% 4.7K OHM	4	R25.14.30.31
128	011-S513A-200	0805 RES CHIP +-5% 51K OHM	1	R15
129	011-S681A-200	0805 RES CHIP +-5% 680 OHM	8	R28.20.27.9.1.2.4.29
130	011-S822A-200	0805 RES CHIP +-5% 8.2K OHM	1	R26
131	014-S104C-500	0805 CRE CAP +-10% 0.1uF	2	C1.2
132	014-S681C-500	0805 CRE CAP +-10% 680PF	1	C3
133	023-D0000-BE0	0603 LED BJS170TS-JPH BLUE	10	
134	023-B0234-WE2	LED Super Bright 2x3x4 MWB75TA-4E WHITE	2	
135	025-TA020-430	TACT SW 2P 4.3mm 180G	12	

NO	ITEM CODE	DESCRIPTION	QTY	SYMBOL
136	025-TA02S-430	TACT SW 2P 4.3mm SMD 180G	6	
137	036-H0250-120	DETACHABLE CON 12P PLUG P=2.5mm	1	
138	049-E1141-050	VOL 12mm Encoder Sw 30DET 15PUS E1141A3A L=11.5mm	1	
		CDP BOARD ASSEMBLY		
139	001-3895D-C20	P.C.B CDP MP3 BOARD	1	
140	002-0016M-P00	I.C 16M DRAM	1	U5
141	002-09226-S01	I.C SIL9226X	1	
142	002-09276-H00	I.C S5L9276	1	
143	002-09290-G01	I.C S5L9290	1	
144	002-04001-A01	I.C KA9259D/IP4001	1	
145	003-01504-B03	TRANSISTOR KTA1504S GR (SMD TYPE)	1	Q1
146	003-01576-S07	TRANSISTOR 2SA1576 SMD	5	Q2.5.6.3.4
147	004-04148-000	DIODE IN4148	5	D3.4.5.1.2
148	004-SR23G-000	PHOTO DIODE SR-23G	2	LED3.4
149	006-16934-000	CRYSTAL 16.9344MHz (2PIN)	1	晶振
150	011-S000A-200	RES CHIP ±5% 0805 0 OHM	1	R112
151	011-S102A-200	RES CHIP ±5% 0805 1K OHM	9	R127.111.56.113.114. 115.102.101.116
152	011-S103A-200	RES CHIP ±5% 0805 10K OHM	8	R125.124.105.107.106.219.129.130
153	011-S104A-200	RES CHIP ±5% 0805 100K OHM	8	R103.104.218.220. 228.223.226.227
154	011-S105A-200	RES CHIP ±5% 0805 1M OHM	5	R1.117.118.27.215
155	011-S124A-200	RES CHIP ±5% 0805 120K OHM	2	R202.207
156	011-S153A-200	RES CHIP ±5% 0805 15K OHM	4	R213.212.209.221
157	011-S184A-200	RES CHIP ±5% 0805 180K OHM	1	R211
158	011-S203A-200	RES CHIP ±5% 0805 20K OHM	1	R216
159	011-S204A-200	RES CHIP ±5% 0805 200K OHM	1	R126
160	011-S220A-200	RES CHIP ±5% 0805 22 OHM	1	R201
161	011-S222A-200	RES CHIP ±5% 0805 2.2K OHM	5	R119.120.121.122.123
162	011-S392A-200	RES CHIP ±5% 0805 3.9K OHM	1	R210
163	011-S473A-200	RES CHIP ±5% 0805 47K OHM	4	R131.222.217.128

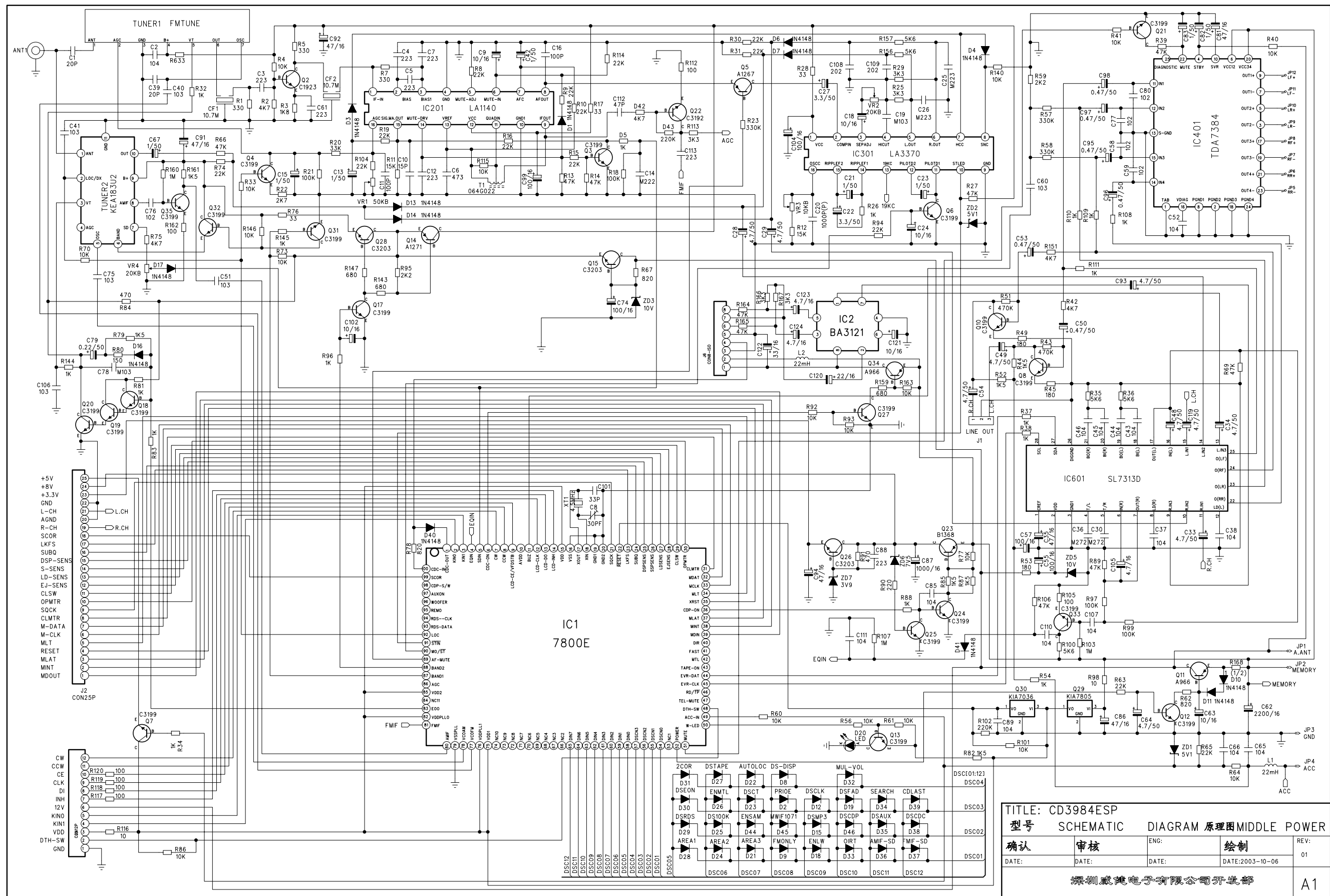
NO	ITEM CODE	DESCRIPTION	QTY	SYMBOL
164	011-S680A-200	RES CHIP $\pm 5\%$ 0805 68 OHM	1	R34
165	011-S683A-200	RES CHIP $\pm 5\%$ 0805 68K OHM	5	R204.206.203.205.225
166	011-S820A-200	RES CHIP $\pm 5\%$ 0805 82 OHM	1	R208
167	011-S822A-200	RES CHIP $\pm 5\%$ 0805 8.2K OHM	1	R214
168	011-S913A-200	RES CHIP $\pm 5\%$ 0805 91K OHM	1	R224
169	012-1107B-300	ELECT CAP 100uF 10V $\pm 20\%$ 5x7mm	3	C102.1.124
170	013-D106L-50A	Tantal Chip CAP 10uF 10V $\pm 20\%$ "A-Size"	6	C109.110.211.222.?.?
171	013-D476L-50B	Tantal Chip CAP 47uF 10V $\pm 20\%$ "B-Size"	2	Q7.C202
172	014-S050C-500	CER CAP CHIP $\pm 10\%$ 0805 5PF 50V	1	C208
173	014-S102C-500	CER CAP CHIP $\pm 10\%$ 0805 0.001uF 50V	4	C205.210.121.201
174	014-S103C-500	CER CAP CHIP $\pm 10\%$ 0805 0.01uF 50V	6	C206.204.216.221.220.108
175	014-S104C-500	CER CAP CHIP $\pm 10\%$ 0805 0.1uF 50V	19	C123.113.112.114.53.203.234. 214.215.212.229.228.115.104. 106.116.120.207.224
176	014-S152C-500	CER CAP CHIP $\pm 10\%$ 0805 0.0015uF 50V	2	C111.112
177	014-S222C-500	CER CAP CHIP $\pm 10\%$ 0805 0.0022uF 50V	4	C101.107.213.226
178	014-S330C-500	CER CAP CHIP $\pm 10\%$ 0805 33PF 50V	2	C117.118
179	014-S333C-500	CER CAP CHIP $\pm 10\%$ 0805 0.033uF 50V	2	C230.217
180	014-S391C-500	CER CAP CHIP $\pm 10\%$ 0805 390PF 50V	2	C225.227
181	014-S472C-500	CER CAP CHIP $\pm 10\%$ 0805 0.0047uF 50V	2	C209.233
182	014-S474C-500	CER CAP CHIP $\pm 10\%$ 0805 0.47uF 50V	2	C218.219
183	014-S560C-500	CER CAP CHIP $\pm 10\%$ 0805 56PF 50V	1	C231
184	014-S683C-500	CER CAP CHIP $\pm 10\%$ 0805 0.068uF 50V	1	C223
185	014-S821C-500	CER CAP CHIP $\pm 10\%$ 0805 820PF 50V	1	C119
186	025-TA020-330	SWITCH 2P 3.3mm SW-111 HC-49S	1	SW1 (small type)
187	031-0140U-250	FFC CABLE 25P 140mm 1.25P ITCH	1	140mm
188	032-E1000-031	RAINBOW WIRE 3P	1	3+100+3
189	036-B0200-041	4P SOCKET 53015-0410 (ROHM)	1	J4
190	036-G0100-171	17P SMD SOCKET P=1.0mm	1	J1
191	203-8008S-C2E	CD DECK CDM-211	1	

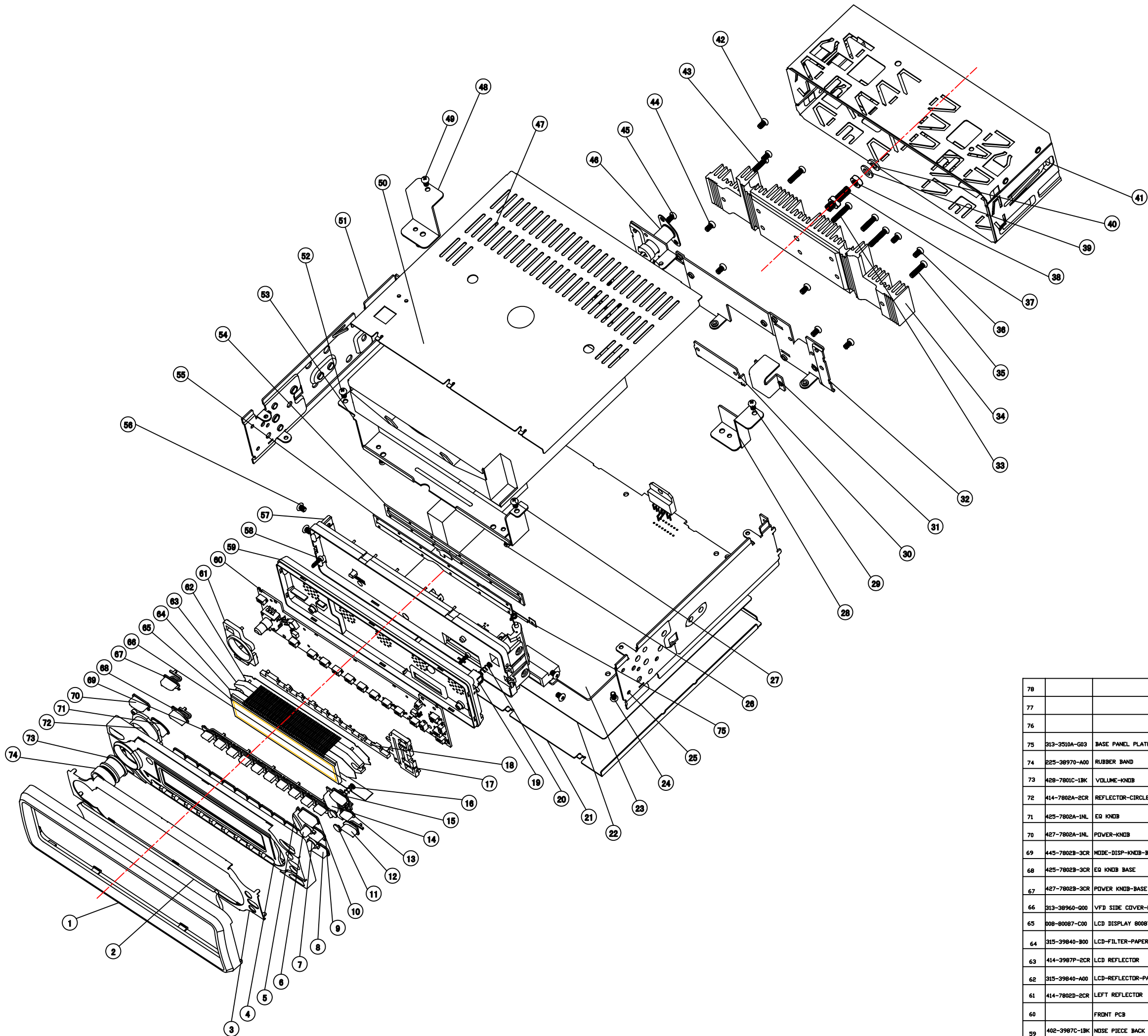
NO	ITEM CODE	DESCRIPTION	QTY	SYMBOL
		MECHANICAL PARTS		
192	209-39870-T00	PULL-SPRING	1	SUS T0.35
193	209-20010-S00	DOOR BUTTON SPRING	1	
194	209-30910-V00	HOOK-SPRING	1	SUS T=0.04
195	209-38960-N00	FRONT LOCK SPRING (BRASS)	1	TUNER TOOLING SAME AS
196	212-52090-14S	SPRING WASHER (φ5.2)	2	ACC:2
197	212-52100-05P	PLATE WASHER (φ5.2)	2	ACC:2
198	214-39850-A00	MAIN FIBER 170x148x0.5mm	1	FIBER T0.5
199	214-DECK0-A00	DECK FIBER 105x95x0.5mm	1	T=0.5 (FOR CD KMC DECK)
200	216-3988H-C00	HEAT-SINK	1	AL DIE CASTING
201	217-1001E-E12	MOUNTING STRIP	1	EGI T1.2
202	217-3987K-C05	AL-ORNAMENT	1	AL SILVER
203	218-3985R-E10	REAR-BRACKET	1	EGI T=1.0mm
204	218-3987C-E10	DECK-BRACKET-F	1	EGI T=1.0mm
205	218-3987L-E10	DECK-BRACKET-L	1	EGI T=1.0mm
206	218-3987R-E10	DECK-BRACKET-R	1	EGI T=1.0mm
207	222-2001B-E06	BOTTOM COVER	1	EGI T=0.6mm
208	222-3896S-E06	SLEEVE-CASE	1	EGI T=0.6mm
209	222-3987T-E06	TOP-COVER	1	EGI T=0.6mm
210	223-3909L-E10	SIDE-CHA-LEFT	1	EGI T=1.0mm
211	223-3909R-E10	SIDE-CHA-RIGHT	1	EGI T=1.0mm
212	225-38970-A00	RUBBER-BAND	1	
213	227-30010-EA5	CASE CUSHION	2	SPONGE T15mm
214	227-30050-E60	CASE CUSHION (B)	2	SPONGE
215	228-3892A-000	CD-FELT	1	CLOTH BLACK
	230-100WE-200	WIRE CLIP	1	
216	233-N030W-H00	HEX NUT: M3	1	FOR IC:1
217	233-N050W-H00	HEX NUT: M5	1	ACC:1
218	234-BMT20-040	SCREW: TTP 2x4 BM TAP TYPE	4	CD PCB+DECK 4

NO	ITEM CODE	DESCRIPTION	QTY	SYMBOL
219	234-HEX50-120	HEX BOLT: M5x12	1	CARBON STEEL D.ZN (WHITE)
220	234-KB017-040	SCREW: KB 1.7x4	5	F-PCB+REFLECTOR-RIGHT:2 F-PCB+MIDDLE-REFLECTOR"3
221	234-MS030-040	SCREW: MS 3x4 (5.5x1x4)	4	BASE PANEL:4
222	234-PA020-10B	SCREW: TS 2x10 PA BLACK	4	N-PIECE BACK
223	234-PA050-160	SCREW: TS 5x16 PA	1	ACC:1
224	234-PT026-040	SCREW: TTP 2.6x4 TAP TYPE	5	DECK BKT+DECK5
225	234-PT030-050	SCREW: TTP 3x5 TAP TYPE (C)	6	DECK-BKT+CHA:3,M-PCB+CHA:2, M-PCB+R-BKT:2,
226	234-PTT30-050	SCREW: TTP 3x5 TAP TYPE (B)	7	COVER+R-BKT:4,ANT-SOCKET:2, DECK-BKT+R-BKT:1
227	234-PT030-080	SCREW: TTP 3x8 TAP TYPE (C)	3	HEAT-SINK+SIDE CHASSIS (L- R):2 REAR-BRACKET+HEAT SINK: 1
228	234-PTT30-080	SCREW: TTP 3x8 TAP TYPE (B)	2	CORD CLAMPER:2
229	234-PM030-080	SCREW: PM 3x8	1	FOR IC:1
230	234-PM030-130	SCREW: 3x13 PM	2	IC:2
231	235-38960-H10	SET KEY	2	EGI T1.0
232	236-65220-E10	CORD CLAMPER (B)	1	EGI T=1.0mm
233	301-OC025-060	POLY BAG	1	OPEN 2.5"x6"Xt0.04
234	301-OC040-090	POLY BAG	1	OPEN 4x9xT0.04
235	301-OC070-105	POLY BAG	1	OPEN 7"x10.5"Xt0.05
236	301-OC110-140	POLY BAG OPEN 11"x14"Xt0.04 W/RECYCLE SYMBOL & WARNING	1	
237	303-0000A-A10	SNOW BOX	1	
238	304-3987A-A10	GIFT BOX	1	
239	305-3987A-A10	INST'S MANUAL	1	
240	306-39870-A00	CARTON BOX	1	
241	313-20010-A00	CD-GUILD-SHEET	1	PVC BLACK T=1.0mm
242	313-3510A-G03	BASE-PANEL-PLATE-A	1	PVC BLACK T=0.3mm
243	313-38960-Q00	VFD-SIDE-COVER-L	1	PAPER T=0.1 BLACK
244	313-38960-R00	VFD-SIDE-COVER-W	2	PAPER T=0.1 BLACK
245	314-0000A-000	AZIMUTH LABEL	1	
246	314-0000T-000	TOP LABEL	1	

NO	ITEM CODE	DESCRIPTION	QTY	SYMBOL
247	314-0000W-000	WARRANTY LABEL	1	
248	315-39840-A00	LCD-REFLECTOR-PAPER "A"	1	T=0.1mm
249	315-39840-B00	LCD-FILTER-PAPER	1	
250	315-39840-C00	LCD-REFLECTOR-PAPER	4	
251	316-WE142-044	SIDE-REFLECTIONAL-PAPER	1	GLOSS SILVER
252	319-00000-010	SILICA GEL	1	PACK 1GM
253	402-1001S-4BK	NOSE PIECE CASE	1	P.P BLACK
254	402-3987A-3BK	BASE-PANLE	1	PC BLACK
255	402-3987B-1BK	NOSE-PIECE	1	ABS BLACK
256	402-3987C-1BK	NOSE-PIECE-BACK	1	ABS BLACK
257	413-3987A-2CR	WINDOW	1	ACRYL CLEAR
258	414-3987P-2CR	LCD-REFLECTOR	1	ACRYL CLEAR
259	414-7802A-1CR	REFLECTOR-CIRCLE	1	ABS CLEAR
260	414-7802B-1CR	REFLECTOR-RIGHT	1	ABS CLEAR
261	414-7802C-1CR	MIDDLE-REFLECTOR	1	ABS CLEAR
262	414-7802D-1CR	LEFT-REFLECTOR	1	ABS CLEAR
263	425-7802A-1NL	EQ-KNOB	1	ABS NATURAL
264	425-7802B-3CR	EQ-KNOB-BASE	1	PC CLEAR
265	426-3987A-3BK	PUSH-KNOB	1	PC BLACK
266	427-7802A-1NL	POWER-KNOB	1	ABS NATURAL
267	427-7802B-3CR	POWER-KNOB-BASE	1	PC CLEAR
268	428-7801C-1BK	VOLUME-KNOB	1	ABS BLACK
269	430-7802A-1NL	EJECT-KNOB	1	ABS NATURAL
270	431-78021-1NL	MEMORY-KNOB-1	1	ABS NATURAL
271	431-78022-1NL	MEMORY-KNOB-2	1	ABS NATURAL
272	431-78023-1NL	MEMORY-KNOB-3	1	ABS NATURAL
273	431-78024-1NL	MEMORY-KNOB-4	1	ABS NATURAL
274	431-78025-1NL	MEMORY-KNOB-5	1	ABS NATURAL

NO	ITEM CODE	DESCRIPTION	QTY	SYMBOL
275	431-78026-1NL	MEMORY-KNOB-6	1	ABS NATURAL
276	430-7802B-3CR	EJECT-KNOB-BASE	1	PC CLEAR
277	439-3987B-3CR	RELEASE-KNOB-ARM	1	PC CLEAR
278	440-3987A-3BK	HOOK	1	PC BLACK
279	441-3909B-100	TRIM-COVER	1	ABS
280	442-7802A-1NL	AS/PS-KNOB	1	ABS NATURAL
281	443-7802A-1NL	DISP-KNOB	1	ABS NATURAL
282	445-7802A-1NL	MODE-KNOB	1	ABS NATURAL
283	445-7802B-3CR	MODE-DISP-KNOB-BASE	1	PC CLEAR
284	446-7802A-2BE	TA-KNOB	1	ACRYL (SKY BLUE)
285	446-7802B-1NL	TA-AF-KNOB-ARM	1	ABS NATURAL
286	446-7802C-2BE	AF-KNOB	1	ACRYL (SKY BLUE)
287	446-7802D-1NL	PTY-KNOB	1	ABS NATURAL
288	446-7802E-3CR	PTY-KNOB-BASE	1	PC CLEAR
289	457-7802B-3CR	TRACK-UP-DOWN-KNOB-BASE	1	PC CLEAR
290	457-7802T-1NL	TRACK-UP-DOWN-KNOB	1	ABS NATURAL
291	459-7802A-1NL	OPEN-KNOB	1	ABS NATURAL
292	463-0000C-4BK	FILTER-FUSE BOX	1	P.P BLACK
293	472-6522B-3BK	CONNECTOR GUIDE (B)	1	P.C BLACK
294	488-7802A-1NL	BND-KNOB	1	ABS NATURAL





56	234-MS030-040	SCREW MS 3X4 (5.5X1X4)	4	BASE PANEL
55	228-3892A-000	CD FELT CD3892	1	CLOTH BLACK
54	313-20010-A00	CD GUIDE SHEET CD3892	1	PVC BLACK T=1.0
53	218-3987C-E10	DECK BRACKET-F	1	EGI T=1.0
52	234-PT030-050	SCREW TTP3X5 TAP TYPE(C)	4	SAME (40)
51	223-3909L-E10	SIDE CHA LEFT	1	EGI T=1.0
50				
49	234-PT030-050	SCREW TTP3X5 TAP TYPE(C)	4	DECK-BKT+SIDE-CHA
48	218-3987L-E10	DECK BRACKET LEFT	1	
47	222-3987T-E06	TOP COVER	1	
46	029-B0000-000	ANTENNA JACK DOUBLE SCREW	1	
45	234-PT030-050	SCREW TTP3X5 TAP TYPE(C)	2	SEE CHN-LEFT-HEAR BRACKET SEE CHN-RHT-HEAR BRACKET
44	234-PT030-050	SCREW TTP3X5 TAP TYPE(C)	4	TOP COVER-HEAR BRACKET BOTTOM COVER-HEAR BRACKET
43	234-PT030-120	SCREW TTP3X12 TAP TYPE (C)		SAME (35)
42	234-PT030-050	SCREW TTP3X5 TAP TYPE(C)	2	ANT JACK
41	222-3896S-E06	SLEEVE CASE	1	EGI T=0.6
40	402-8008B-1BK	SPRING WASHER (#5.2)	1	ACC2
39	212-S2100-05P	PLATE WASHER(#5.2)	1	SET11 ACC2 02521005
38	233-N050V-H00	HEX NUT: M5	1	AC04
37	234-HEX50-120	HEX BOLT: M5x12mm DOUBLE HEAD	1	CARBON STEEL 320KMTED
36	234-PT030-050	SCREW TTP3X5 TAP TYPE(C)	2	CORD CLAMP
35	234-PT030-120	SCREW TTP3X12 TAP TYPE (C)	4	SEE DRAWING SHEET
34	216-3908H-C00	HEAT SINK	1	AL White
33	234-PM030-150	SCREW MS3X15 PH	2	IC BRACKET
32	218-3984R-E10	REAR-BRACKET	1	EGI T=1.0
31	236-3984B-E10	CORD CLAMER	1	EGI T=1.0
30		IC BRACKET	1	EGI T=1.0 DLD NL239388825030
29	234-PT030-050	SCREW TTP3X5 TAP TYPE(C)	1	SAME (40)
28	218-3987R-E10	DECK-BRACKET-R	1	EGI T=1.0
27	234-PT030-050	SCREW TTP3X5 TAP TYPE(C)	1	
26	234-PT026-040	SCREW TTP2.6X4 TAP TYPE	5	SEE DRAWING
25	223-3909R-E10	SIDE CHASSIS RIGHT CD3909	1	EGI T=1.0
24	234-PT030-050	SCREW TTP3X5 TAP TYPE(C)	3	M-PCB+CHA#3
23		MAIN PCB CD3985	1	
22	214-39850-A00	MAIN FIBER 170X148X0.5	1	FIBER T=0.5
21	222-2001B-E06	BOTTOM COVER CD3892	1	EGI T=0.6
20	209-18880-F00	PULL-SPRING CD1888	1	ABS Clear
19	426-3987A-3BK	PUSH KNOB CD3987	1	PC BLACK
18	414-7802C-2CR	MIDDLE-REFLECTOR	1	ACRYL CLEAR
17	414-7802B-2CR	REFLECTOR RIGHT	1	ACRYL Clear
16	209-20010-S00	DOOR BUTTON SPRING	1	SUS
15	439-3987B-3CR	RELEASE KNOB ARM	1	PC CLEAR
14	457-7802B-3CR	TRACK UP/DOWN KNOB BASE	1	PC CLEAR
13	446-7802E-3CR	PTY KNOB BASE	1	PC CLEAR
12	430-7802B-3CR	EJECT KNOB BASE CD7802	1	PC Clear
11	446-7802B-1NL	TA-AF-KNOB-ARM CD7802	1	ABS NATURAL
10	459-7802A-1NL	OPEN KNOB CD7802	1	ABS NATURAL
9	446-7802D-1NL	PTY KNOB CD7802	1	ABS NATURAL
8	430-7802A-1NL	EJECT KNOB CD7802	1	ABS NATURAL
7	446-7802C-2BE	AF KNOB CD7802	1	Acryl Sky/Blue
6	446-7802A-2BE	TA KNOB CD7802	1	ACRYL SKY BLUE
5	457-7802T-1NL	TRACK-UP-DOWN-KNOB	1	ABS NATURAL
4	402-3987C-1BK	NOISE-PIECE	1	ABS Black
3	217-3987K-C05	AL-ORNAMENT	1	AL WHITE T=0.5MM
2	413-3987A-2CR	WINDOW	1	ACRYL CLEAR
1	441-3909B-100	TRIM-COVER	1	ABS BLACK
ND	PART NO	DESCRIPTION	QTY	SYMBOL
TOLERANCE				
1-4	A	WIWI INDUSTRIES LIMITED		
5-16	0.05	TITLE	CD3987-EXPLODED	MODEL NO.
17-100	0.07	MATERIAL		PART NO.
01-250	0.10	FINISHING		DRAWING NO.
251-900	0.20	SCALE: FULL	UNIT: mm	QTY:
	0.30		DESIGNED BY:	APPROVED BY:
57	402-3987A-3BK	BASE PANEL	1	PC BLACK