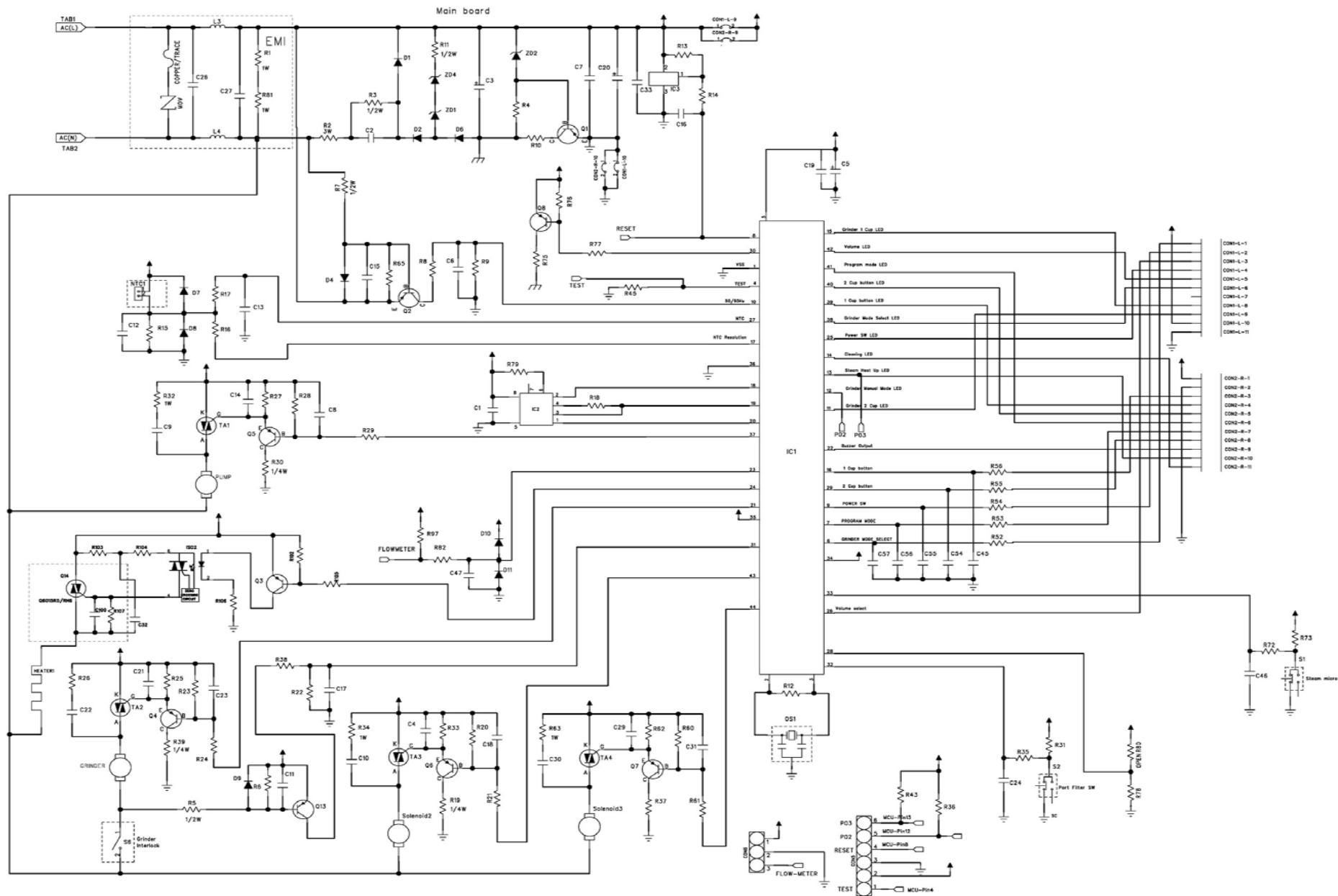
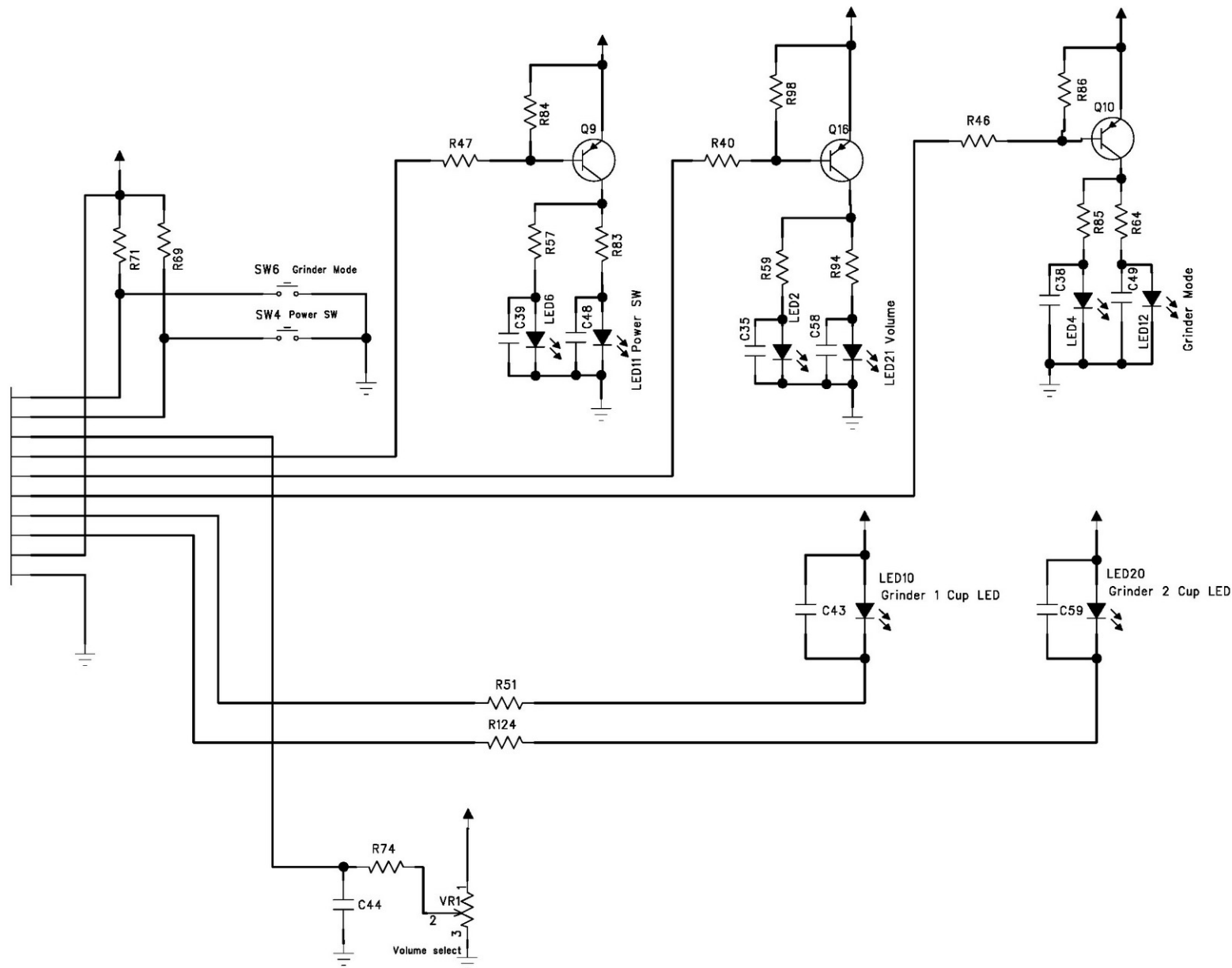


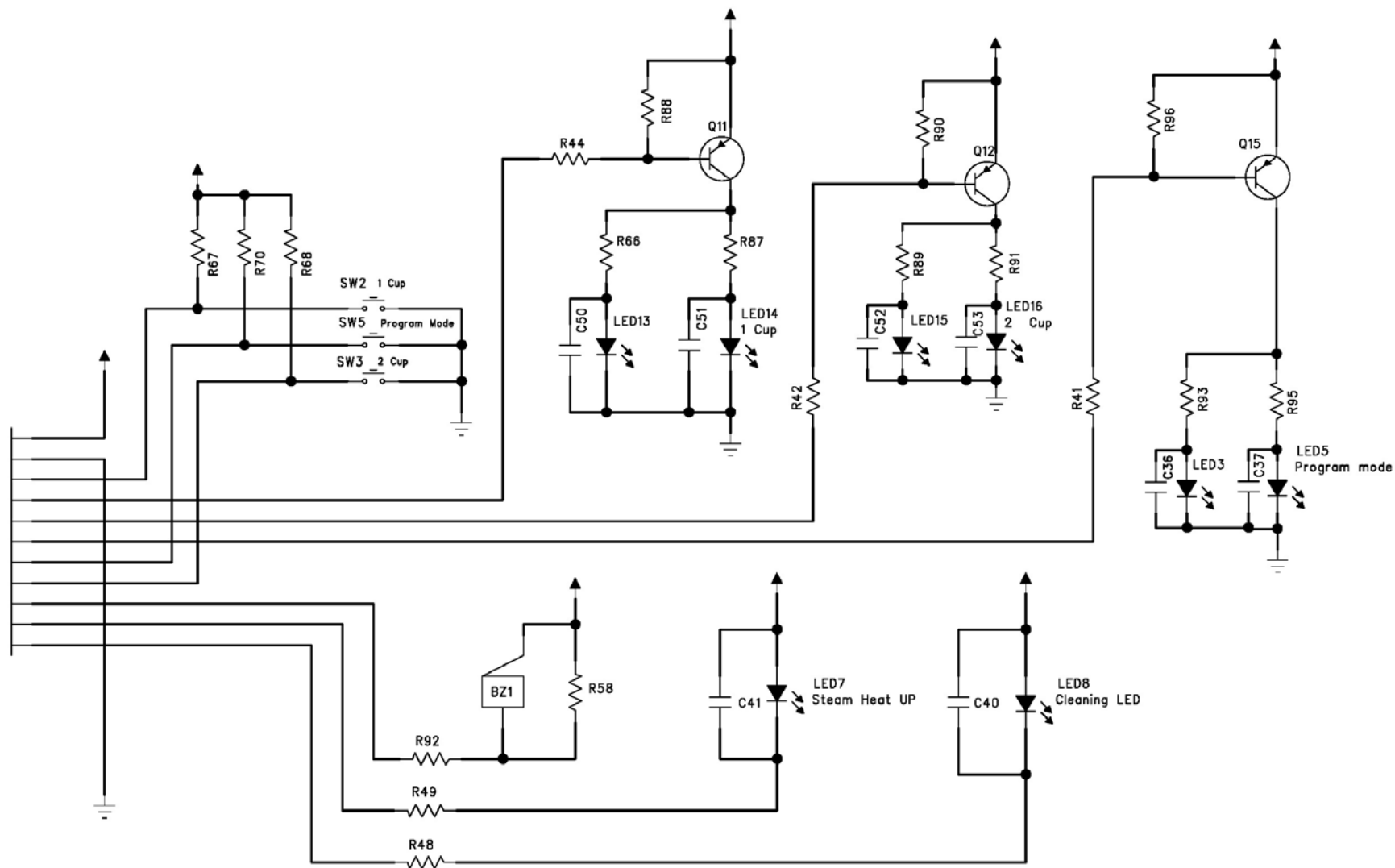
Парт номер	Наименование
C801AA-02.22	Диффузор в сборе
C801AA-03.9	Манометр
C801AA-04.1	Переключатель в сборе
C801AA-04.27	Капучинатор в сборе
C801AA-05	Блокиратор кофемолки в сборе
C801AA-06	Узел помола в сборе (Редуктор+мотор)
C801AA-06.11	Накладка на жернова
C801AA-06.15	Кольцо уплотнительное
C801AA-06.37	Кольцо уплотнительное
C801AA-06.5	Шестерня
C801AA-06.6	Шестерня
C801AA-06.7	Опора
C801AA-06.8	Держатель жерновов
C801AA-07.1	Крышка верхняя
C801AA-08	Емкость для воды в сборе
C801AA-08.12	Держатель фильтра
C801AA-08.13	Фильтр для воды угольный (Упаковка бшт)
C801AA-08.13	Фильтр для воды (Угольный)
C801AA-08.15	Крепление для фильтра
C801AA-09.5	Решётка поддона
C801AA-10	Рожок
C801AA-11.1	Пресс для утрамбовки кофе
C801AA-11.3	Фильтр на 1 чашку с одинарным дном
C801AA-11.31	Фильтр на 1 чашку с двойным дном
C801AA-11.4	Фильтр на 2 чашки с одинарным дном
C801AA-11.41	Фильтр на 2 чашки с двойным дном
C801AA-11.7	Игла чистящая
C801AA-11.81	Ложка мерная
C801AA-11.82	Щетка для чистки
C801AA-11.9	Кружка
C801AA-14	Клапан в сборе
C801AA-17	Клапан
C801AA-18.1	Плата индикации левая
C801AA-18.2	Плата индикации правая
C801AA-18.3	PCB в сборе
C801AA-18.3	PCB в сборе (Комплект 3 модуля + датчики+переключ)
C801AA-19	Помпа
C801AA-25	Термоблок в сборе
C801AA-25.2	Термостат
C801AA-25.6	Термопредохранитель 216С 10А
C801AA-89	Набор для чистки

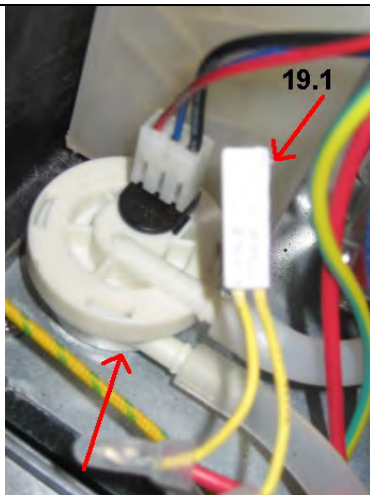


CON3-L-1
CON3-L-2
CON3-L-3
CON3-L-4
CON3-L-5
CON3-L-6
CON3-L-7
CON3-L-8
CON3-L-9
CON3-L-10

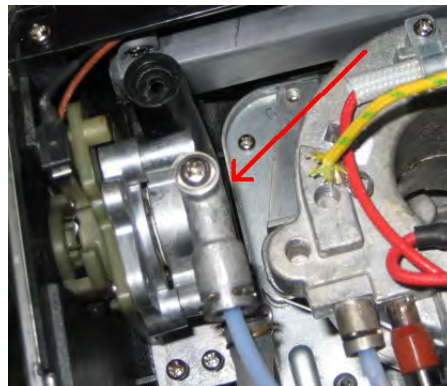


CON4-R-1
CON4-R-2
CON4-R-3
CON4-R-4
CON4-R-5
CON4-R-6
CON4-R-7
CON4-R-8
CON4-R-9
CON4-R-10
CON4-R-11





02.41 & 19.1



04.1



05



06



06.5



06.6



06.7



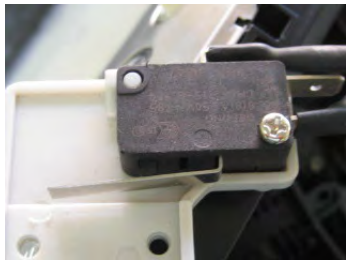
06.8



06.11



06.15



07.9



08.9



08.12



08.13



08.15



11.1



09.3



09.6



09.8



10



11.9



12.4



BES860/14 SOLENOID VALVE ASSY

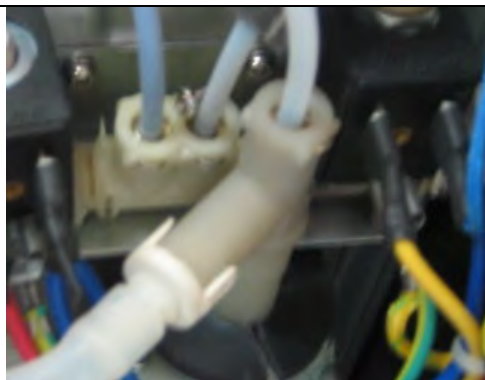
14



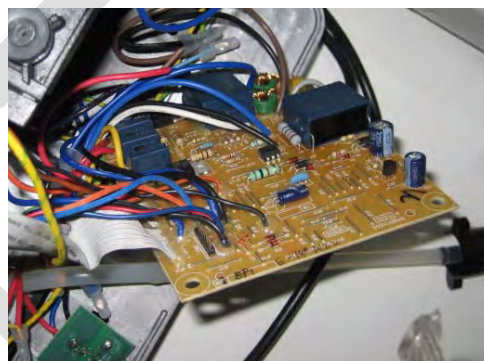
14.8



14.9



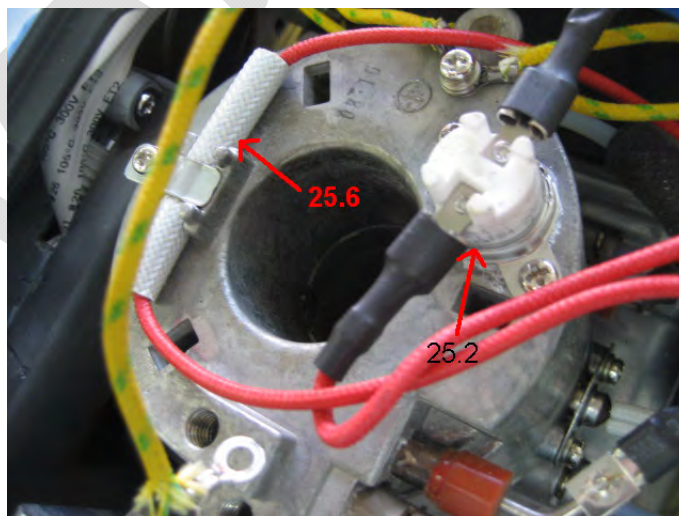
17



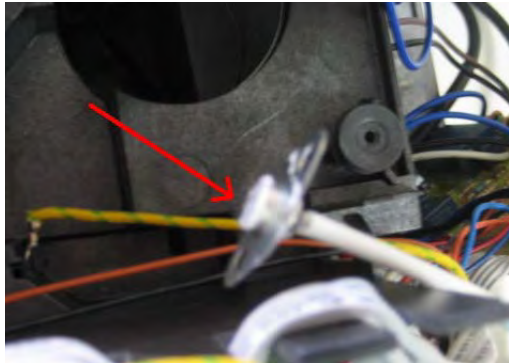
18.3



02.22 & 19



25.2 & 25.6



25.3



25



89 – Cleaning Kit



09.1



03.9

MAIN FUNCTIONS AND FEATURES

- Integrated conical burr grinder with adjustable grind size selector
- Bean hopper with 230g capacity
- Preset Grind dosing – Adjustable single or double cup dose with lights
- Hands free, direct grinding to portafilter
- Tamper “on board” – integrated or removable
- Accurate temperature control
- Dry puck feature
- Programmable function – 1 cup or 2 cup buttons
- Espresso pressure gauge for ideal espresso zone
- Commercial style swivel steam wand and stainless steel frothing attachment
- Advanced dual wall crème system filters
- Single wall filters
- Energy saving features
- Cup warming trays
- Cleaning reminder light
- Removable 2 litre water tank with water filter
- Cord storage
- Custom designed accessories, stainless steel jug, measuring/tamping spoon, cleaning tool brush, cleaning tablets, cleaning cycle disk, allen key, storage tray

6.0 CORE TECHNOLOGY

Integrated conical burr grinder with adjustable grind size selector
Thermocoil heating system with integrated stainless steel water coil

7.0 CLEANING AND DECALCIFICATION

- Refer to instruction book

1. INSTALLING / REPLACING THE FILTER IN THE WATER TANK

- Remove the filter from the plastic bag, and soak in a cup of water for 5 minutes
- Rinse the filter under cold running water for 5 seconds
- Wash the stainless steel mesh in the plastic filter compartment with water and assemble
- Set the date dial to 2 months ahead To install, push down to lock into place

8.0 PORTAFILTER CLEANING

Periodically run water through the machine with the portafilter in place, but without any ground coffee, to rinse out any residual coffee particles.

9.0 Water Filter - REPLACEMENT DUE

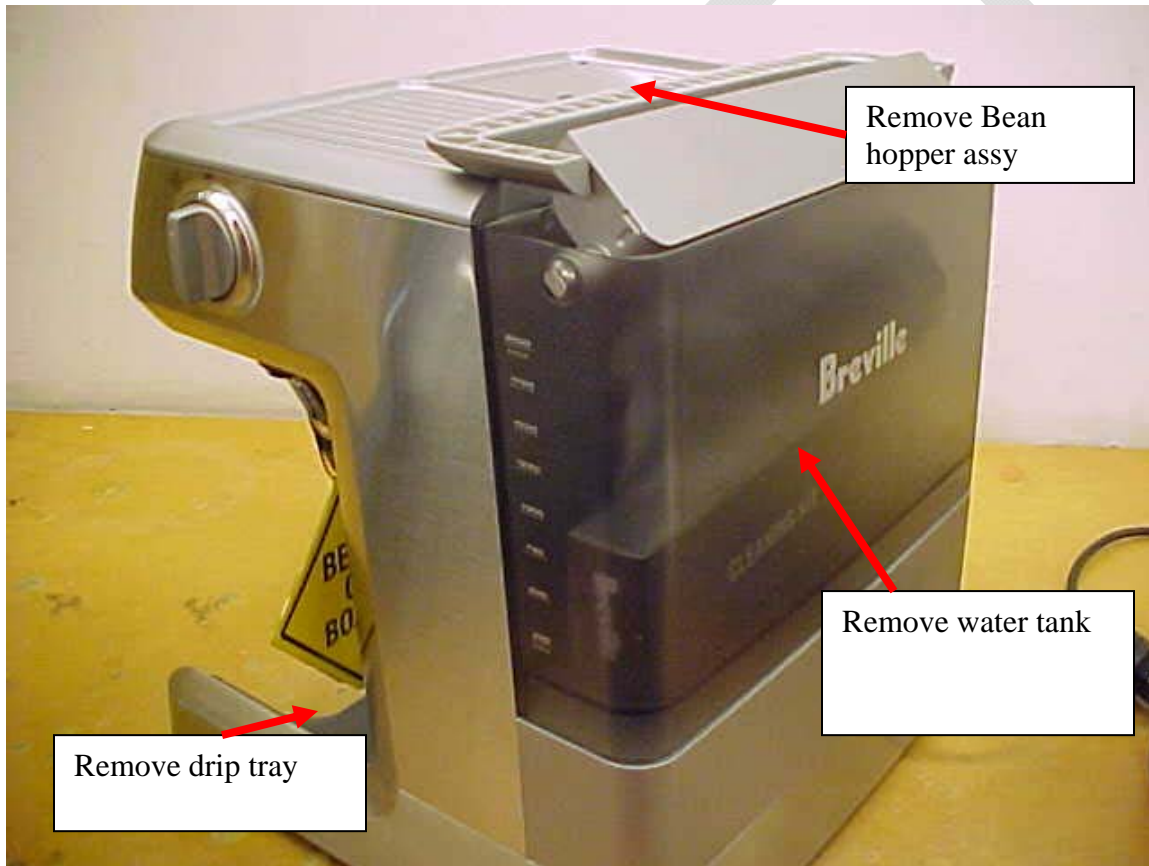
The Water Filter provided with the Fresca Espresso Machina™ can significantly reduce substances that affect the smell and taste of water such as free chlorine, certain pesticides and organic impurities as well as traces of heavy metals. The Water Filter can be removed from the water tank during operation if not required.

10.0 CUSTOMER MAINTENANCE

Refer to instruction book Page 44 onwards

11.0 SERVICE AND REPAIR - ACCESS PROCEDURE

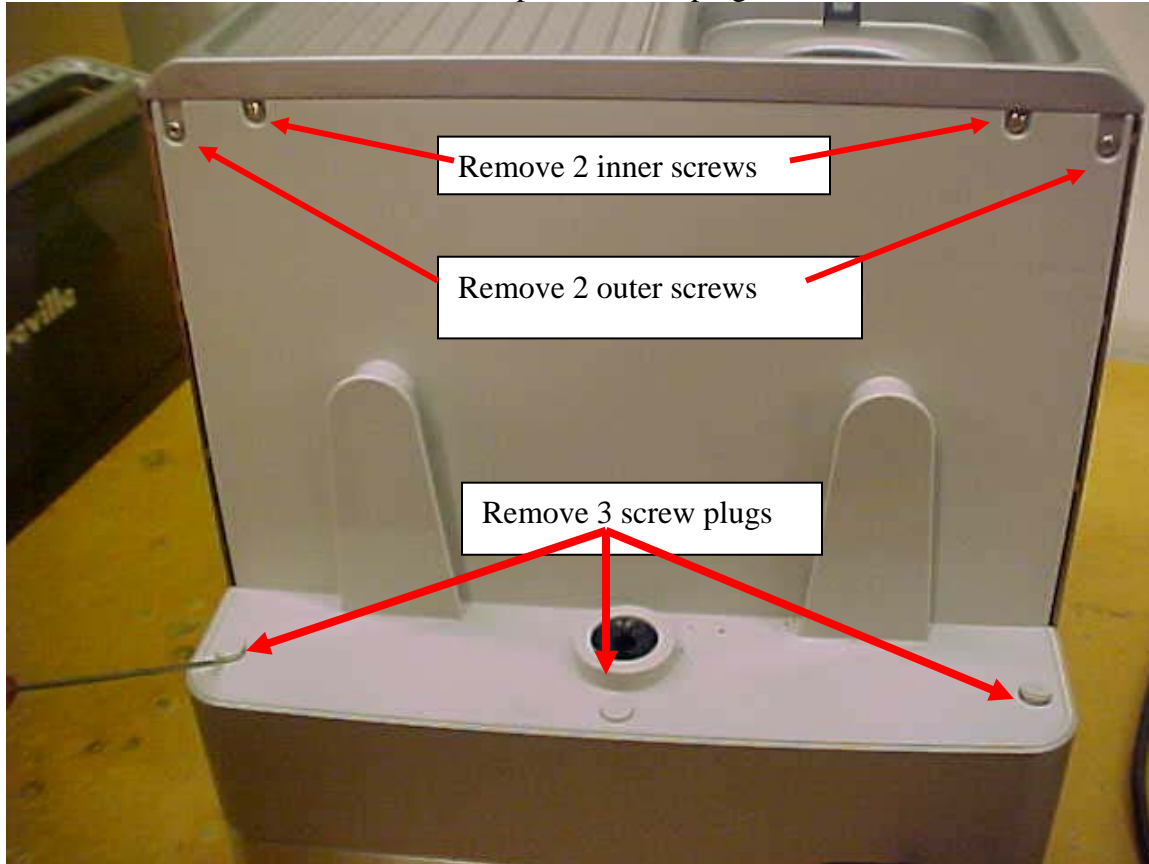
- 11.1 Remove water tank
- 11.2 Remove drip trays
- 11.3 Remove bean hopper assembly



11.4 remove two screws as shown below



- 11.5 To remove the back plastic cover
11.5.1 remove the 3 plastic screw plugs



11.5.2 remove 3 screws which are underneath the plastic caps

11.5.3 remove 2 outer screws

11.5.4 remove 2 inner screws



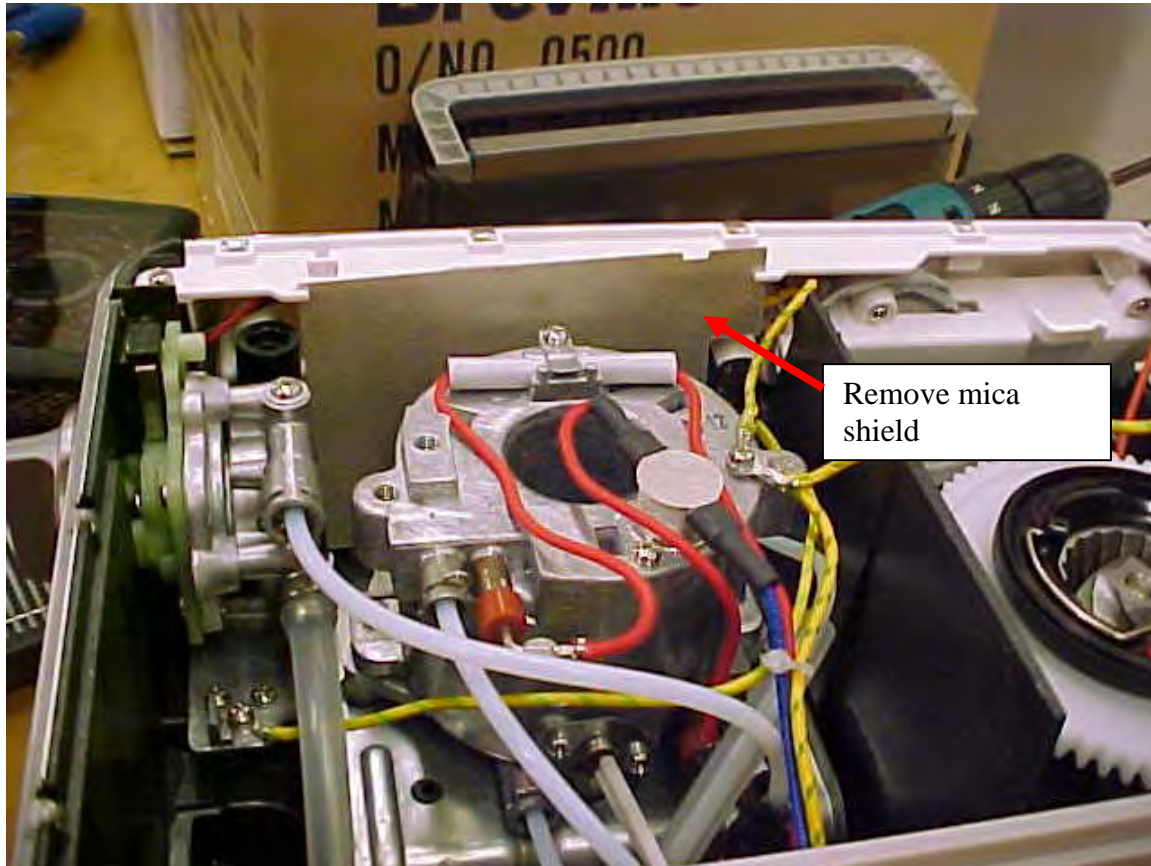
11.6

Lift and remove the top cover



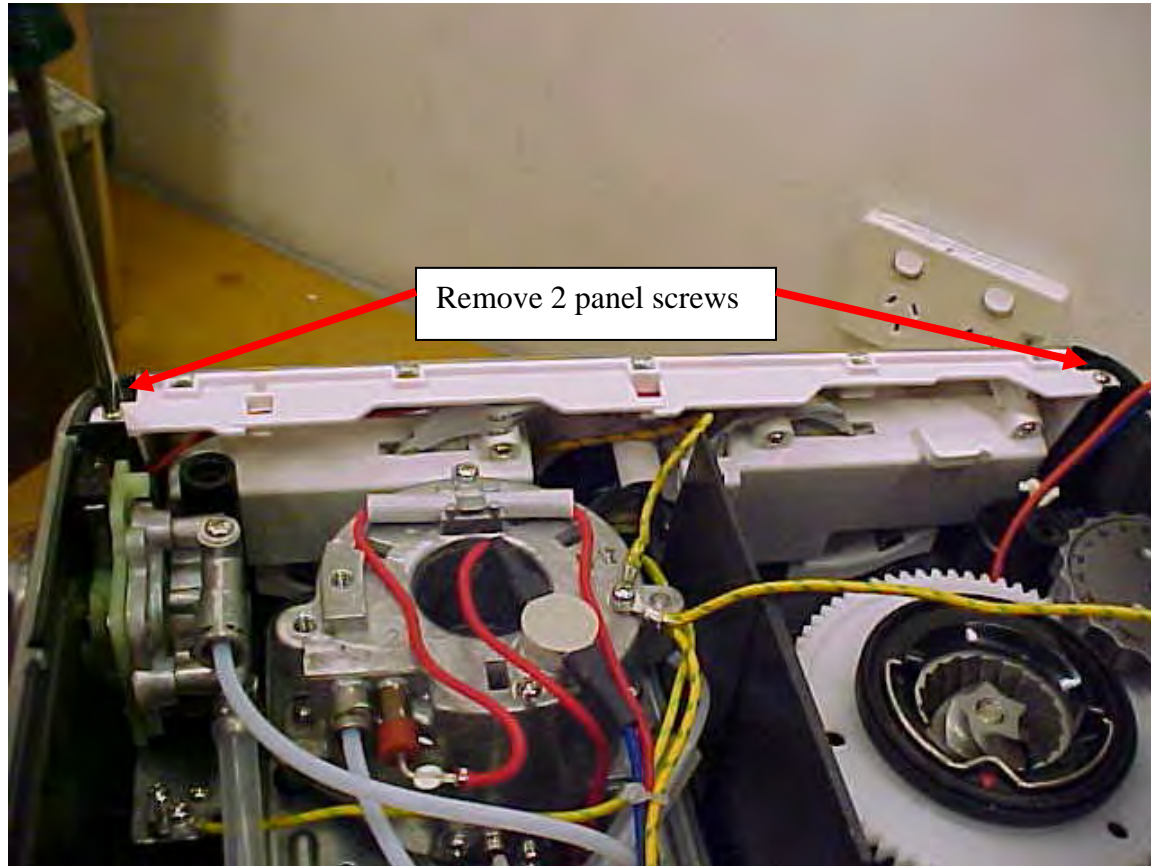
11.7

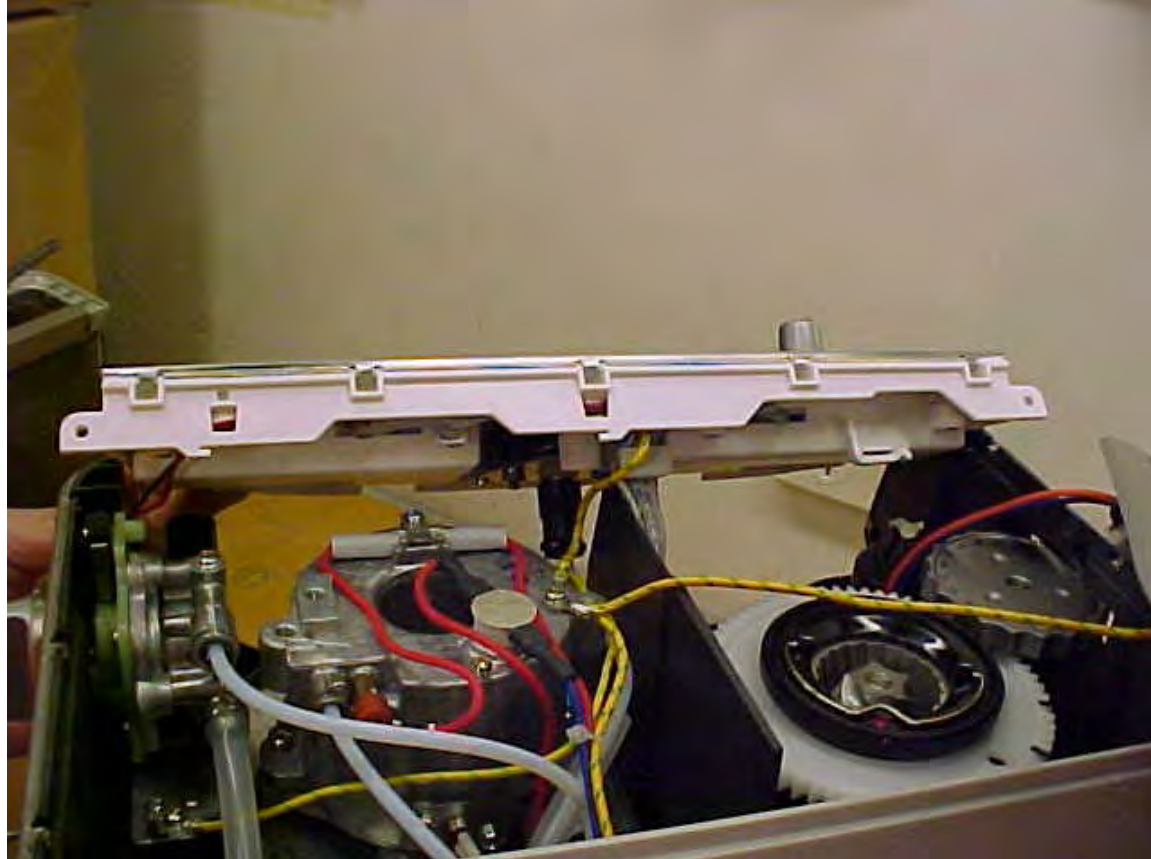
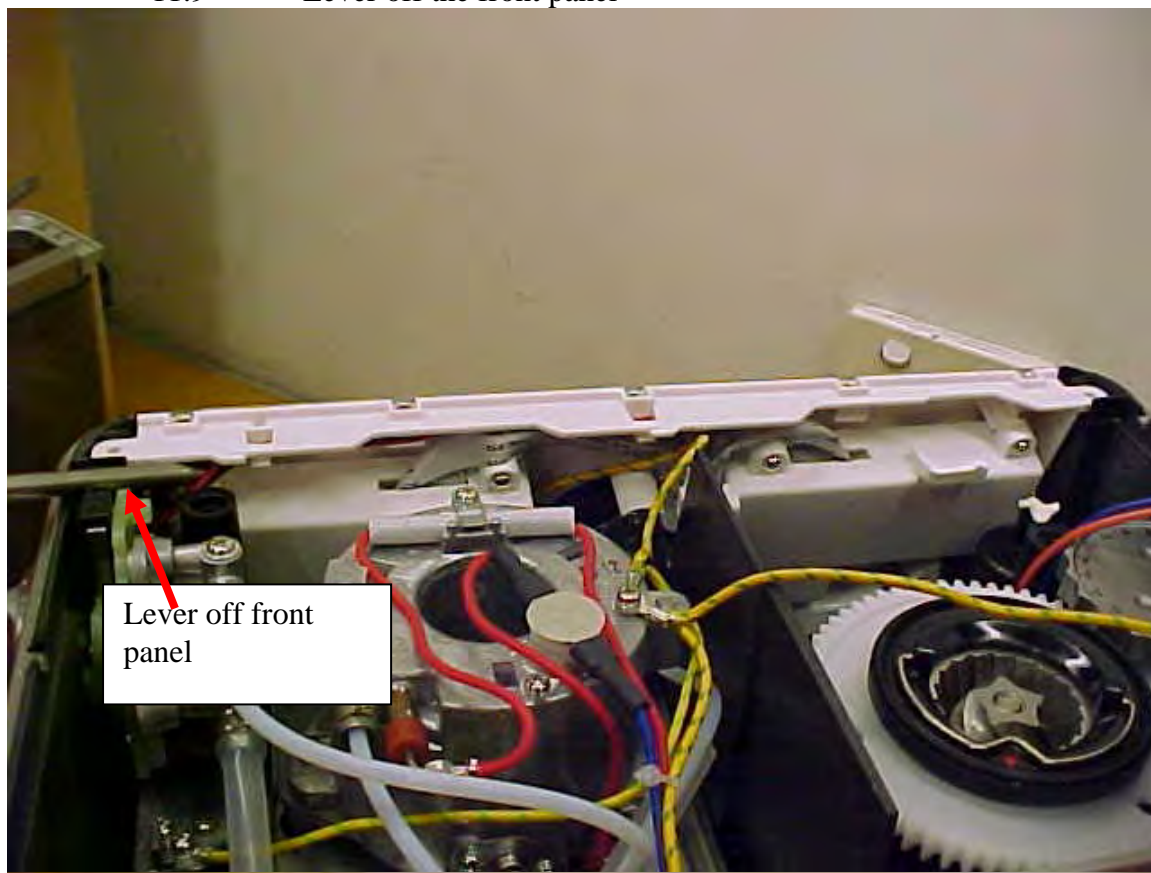
Remove mica shield



11.8

Remove 2 front panel screws as shown below

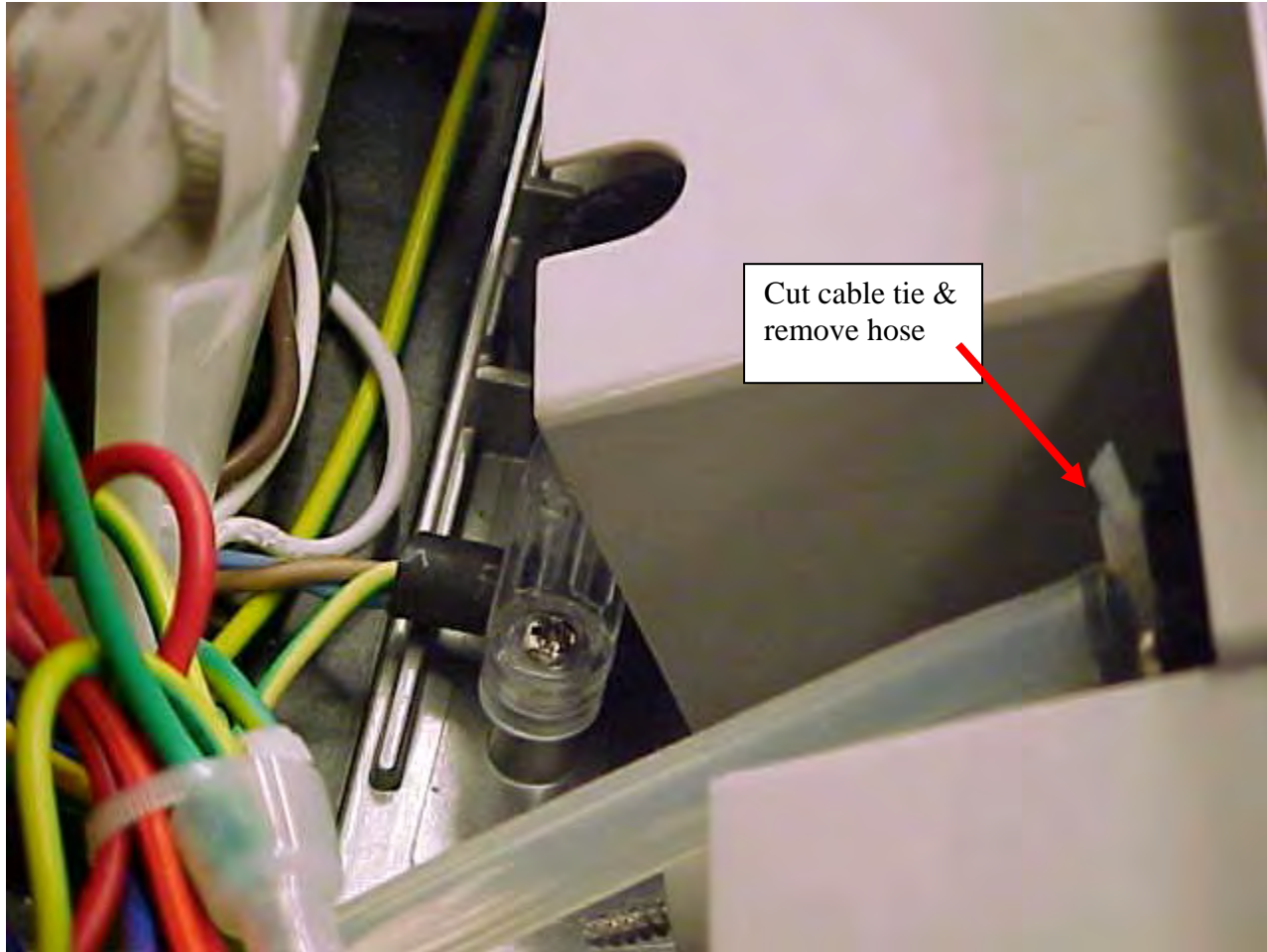






11.11

Cut cable tie and remove hose to completely remove the back plastic cover



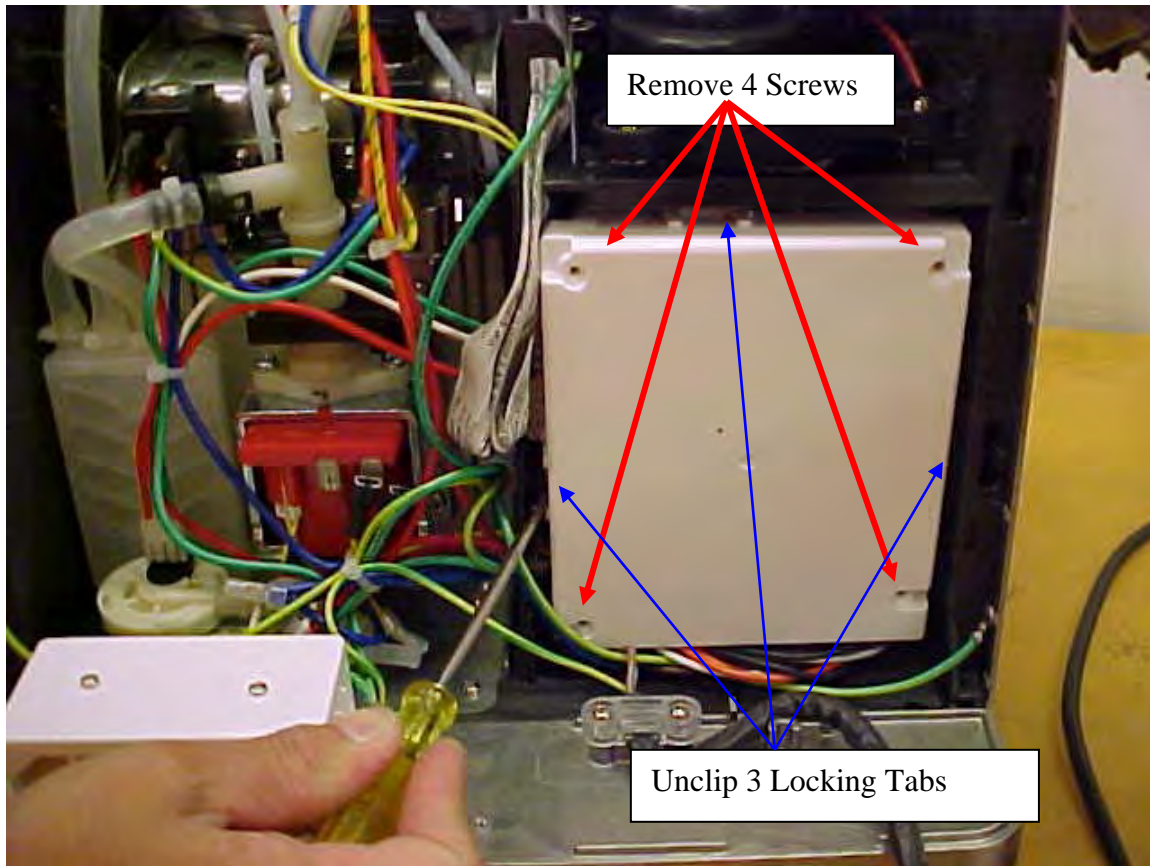
11.12 Back cover can be completely removed and all internals should be visible now

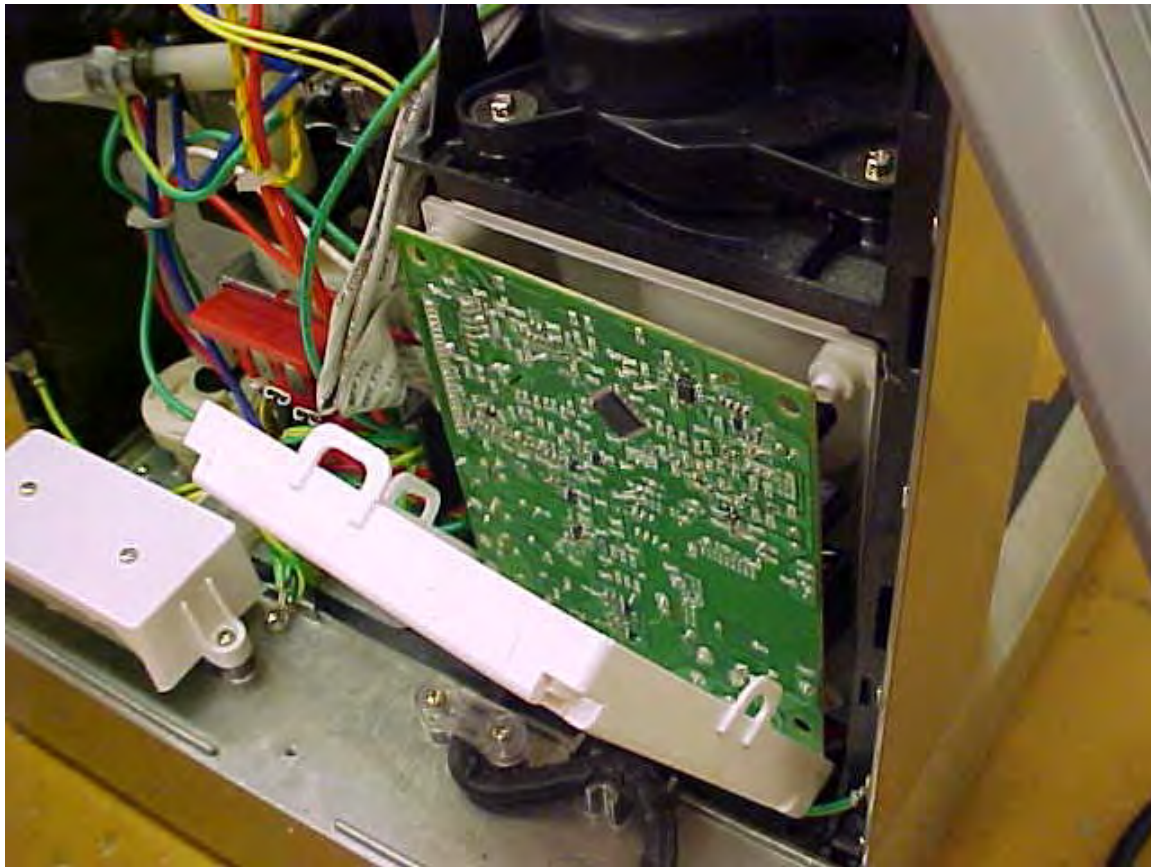


12.0

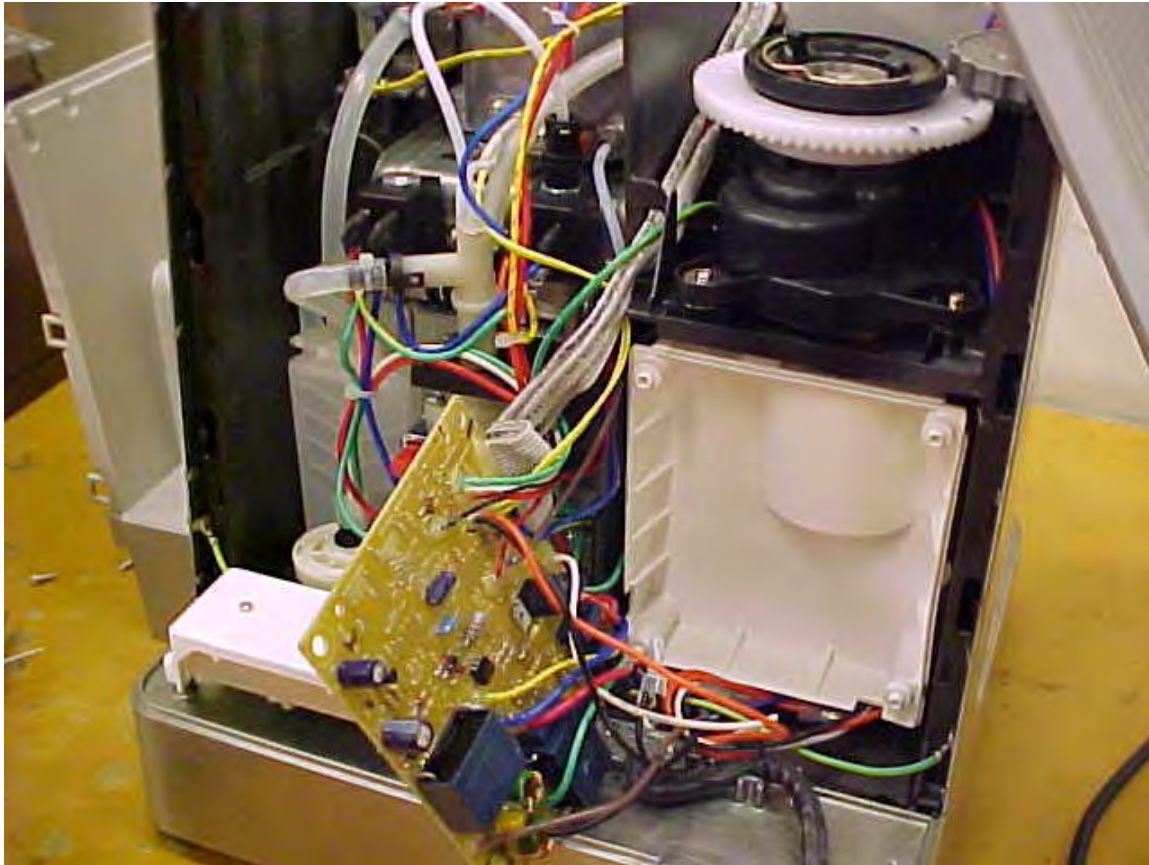
To Change Main PCB

- 12.1 Remove 4 screws from the main pcb cover
- 12.2 Remove the pcb cover by unclipping locking tabs(3)





12.3 Main pcb will be accessible now

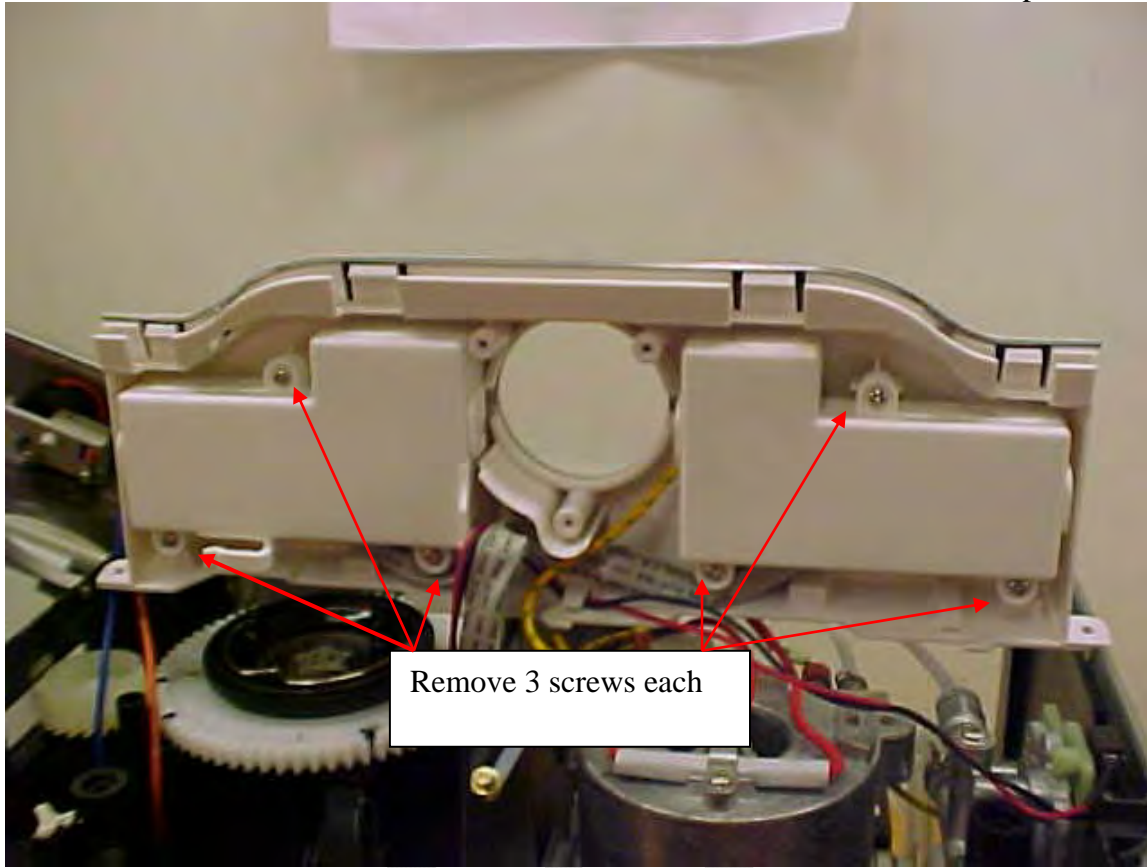


13.0

Removal of Control Panel PCB

13.1

Remove 3 screws on each switch controls on the control panel

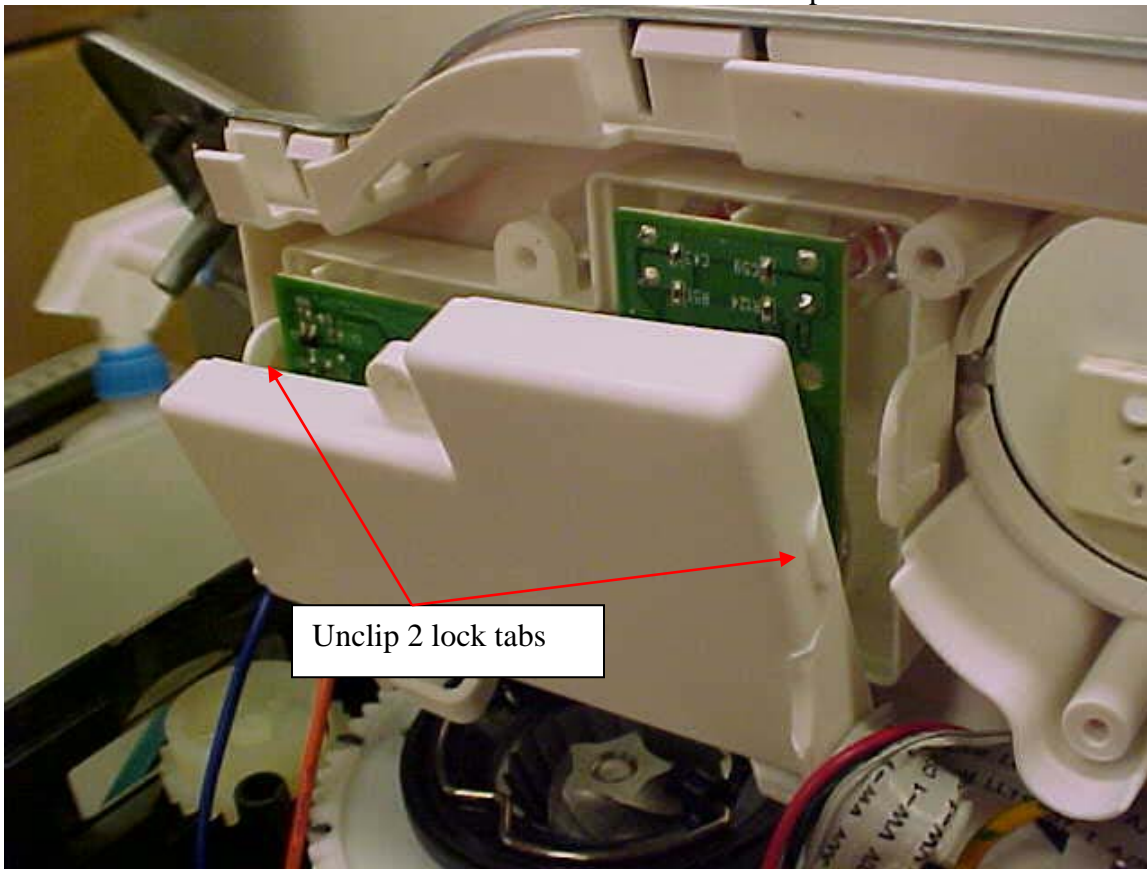


13.2

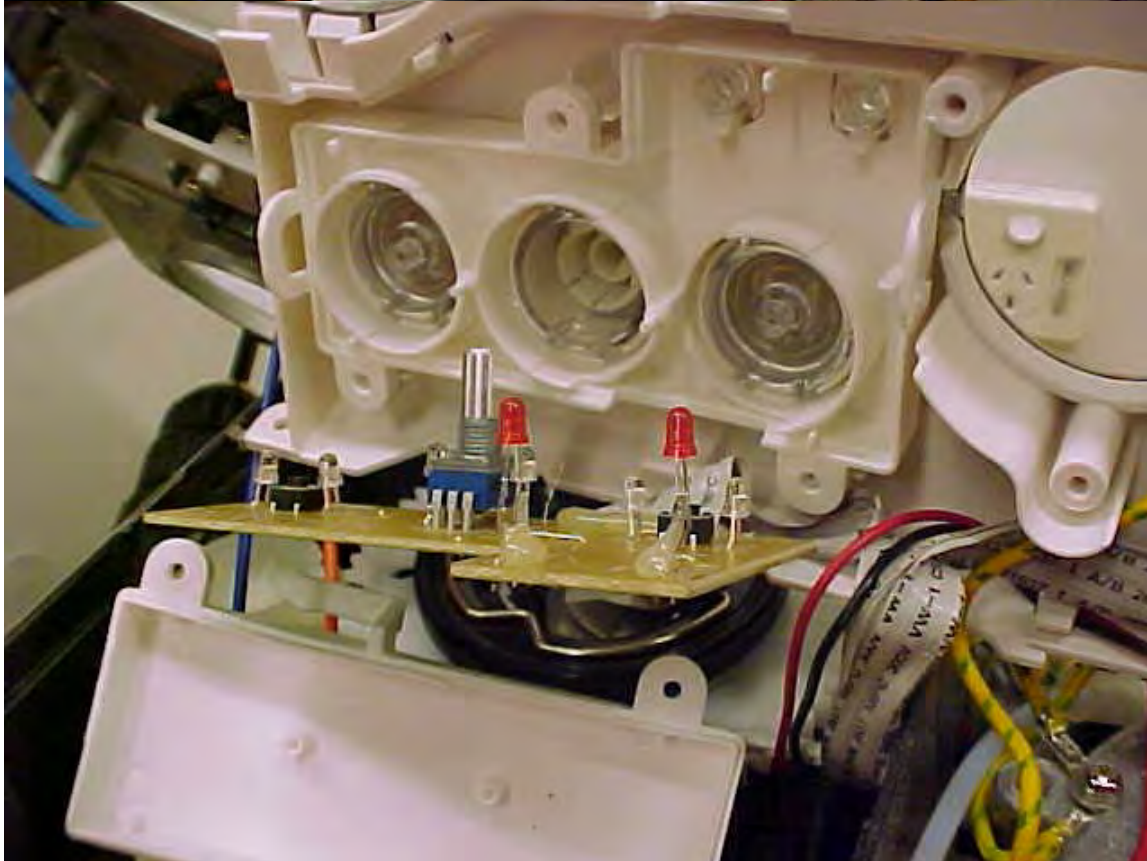
Unclip locking tabs

13.3

Pcb can now be removed from the front panel



Unclip 2 lock tabs

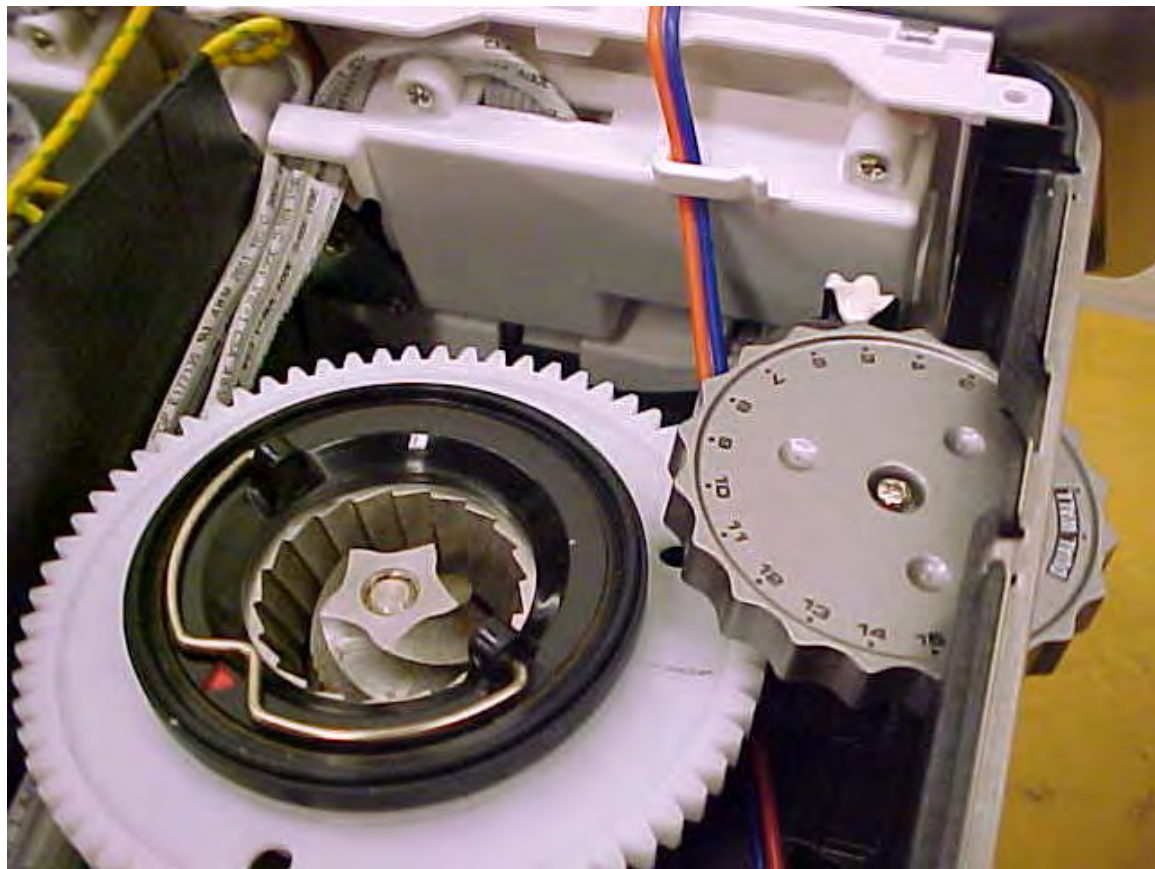


14.0

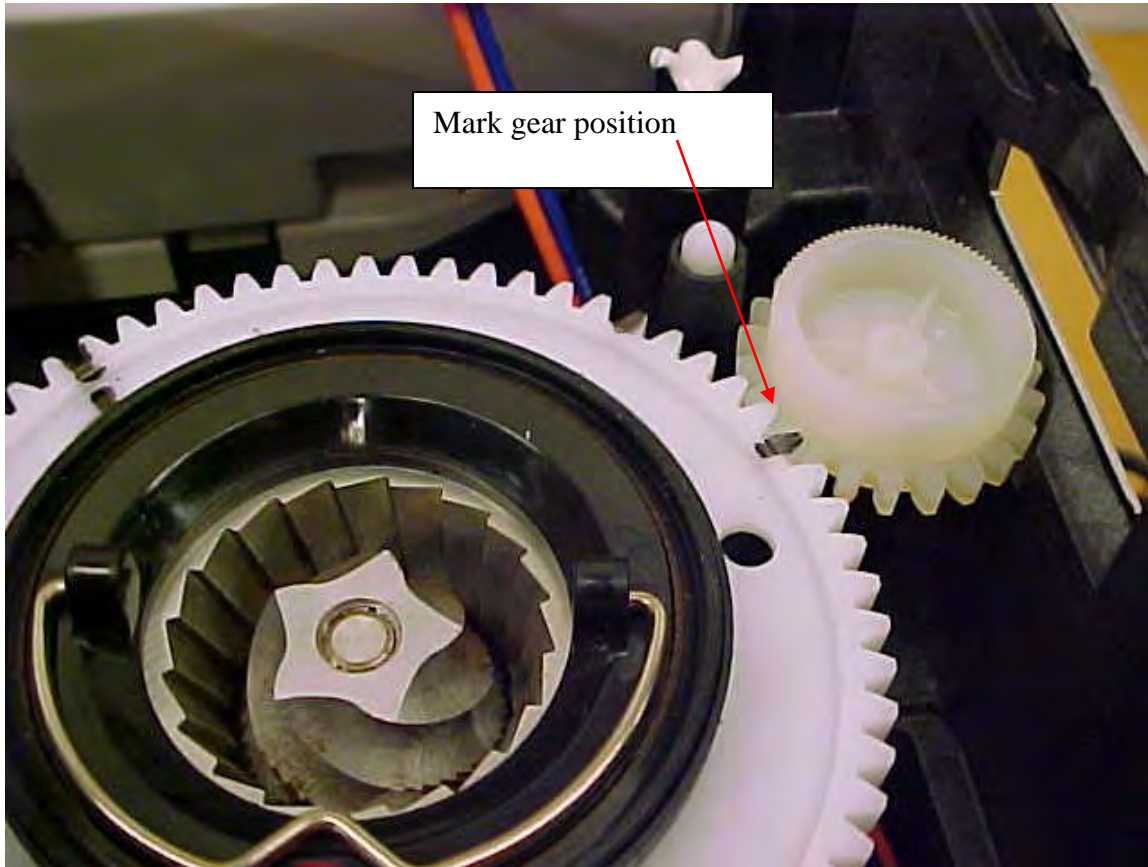
To Change Grinder Assembly

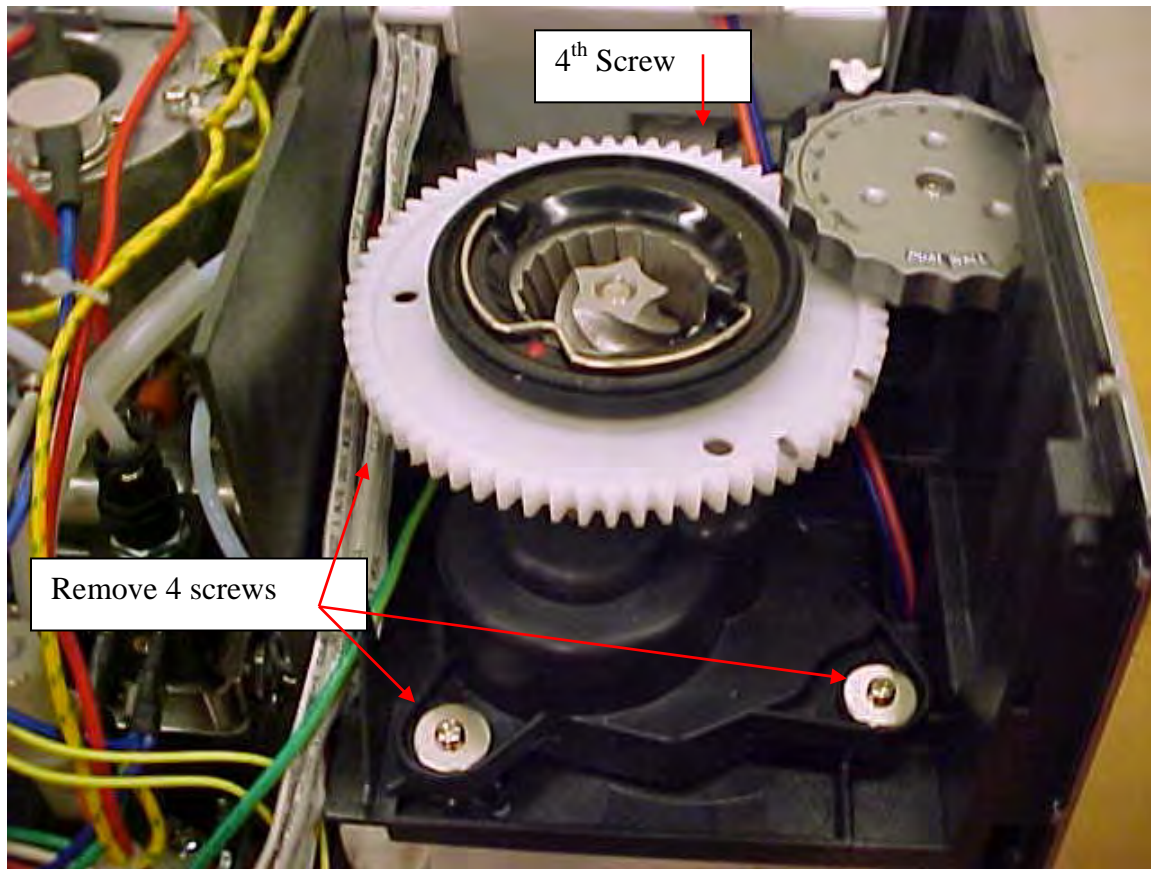
- 14.1 remove the grinder setting control knob(recommend set position to Dual Wall setting)





- 14.2 Mark gear position
- 14.3 Remove 4 grinder mounting screws



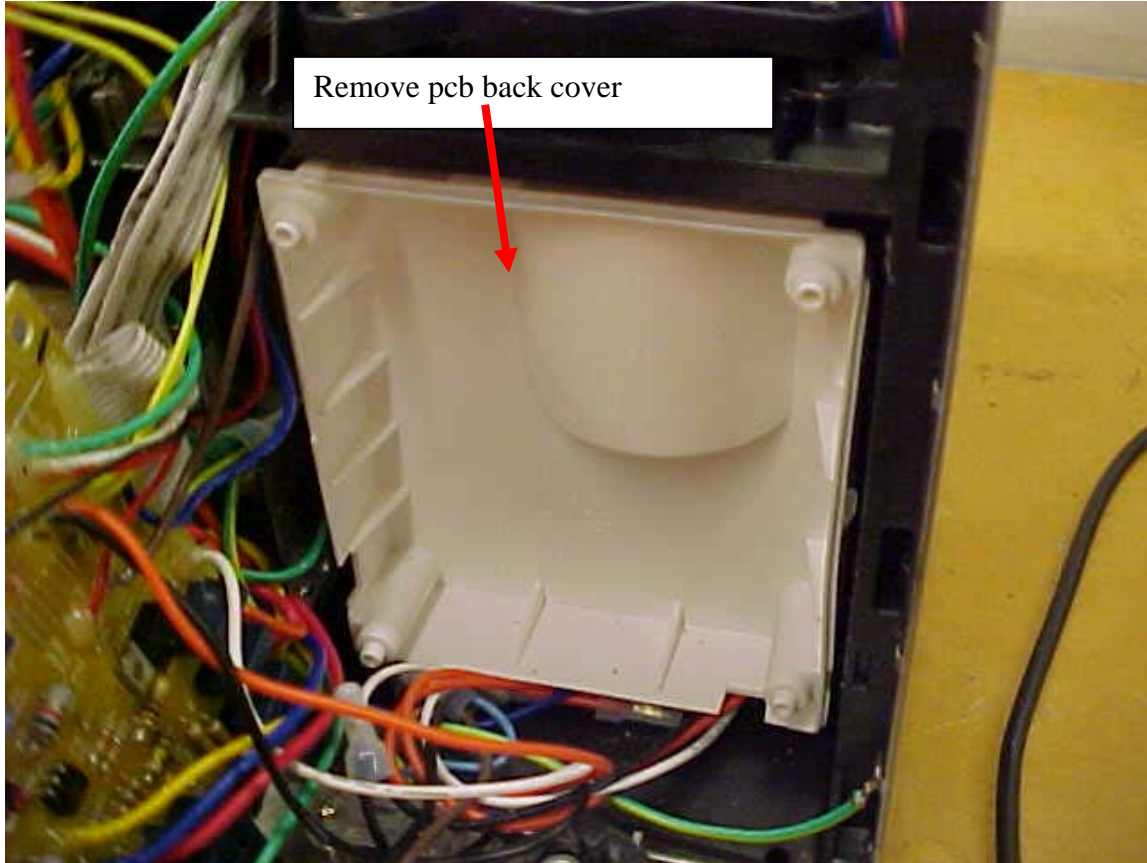


4th Screw

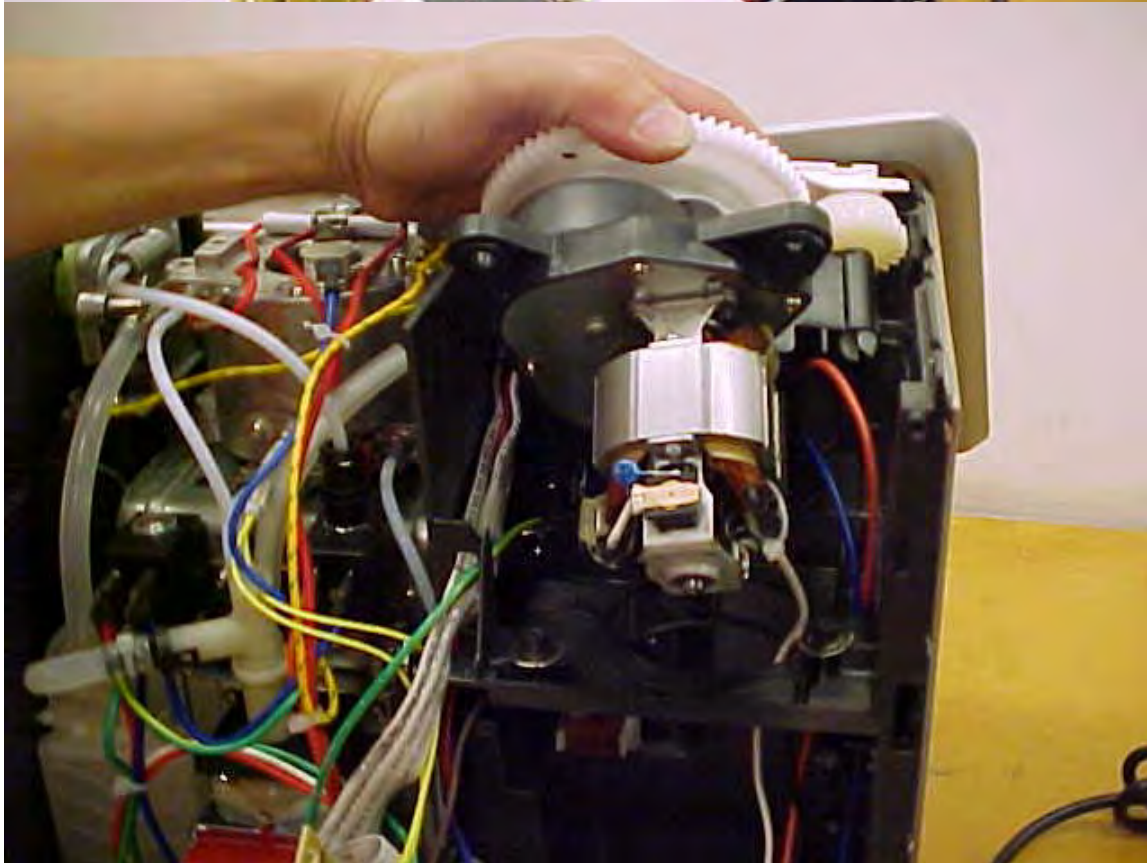
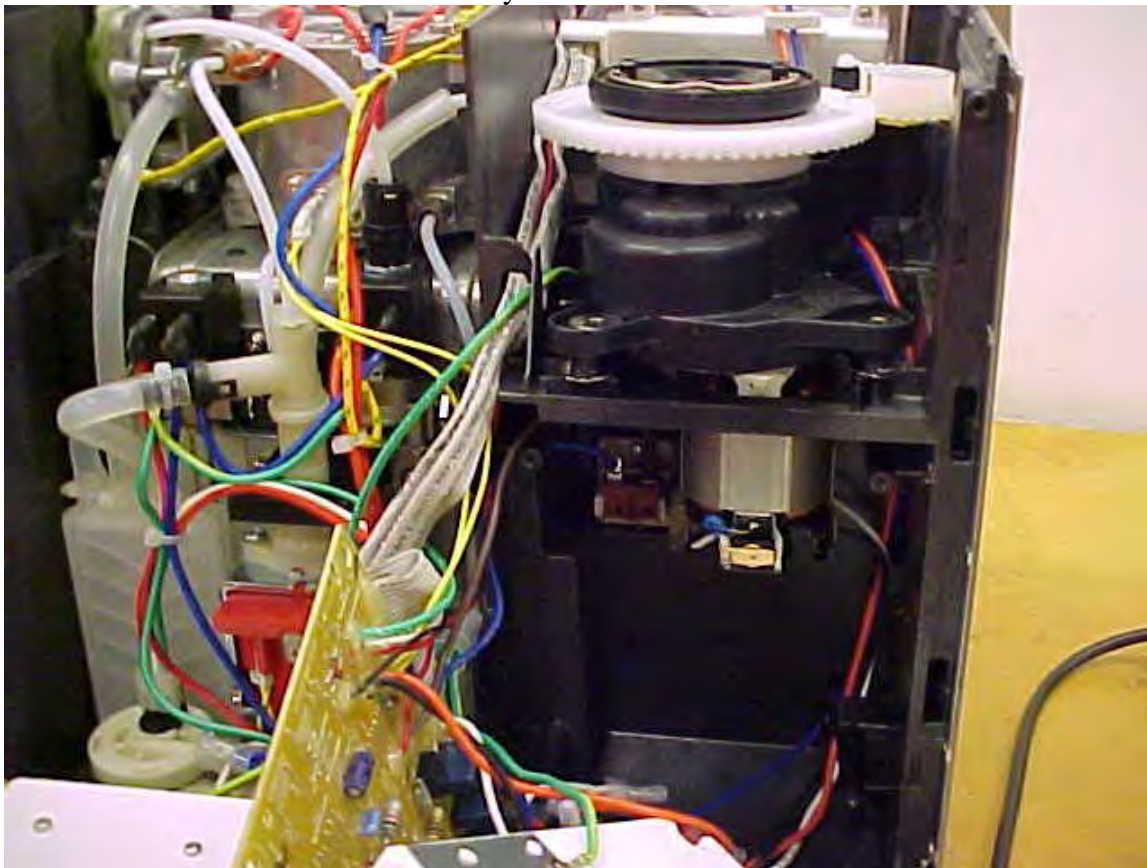
Remove 4 screws

14.4

Remove the back cover of the main pcb

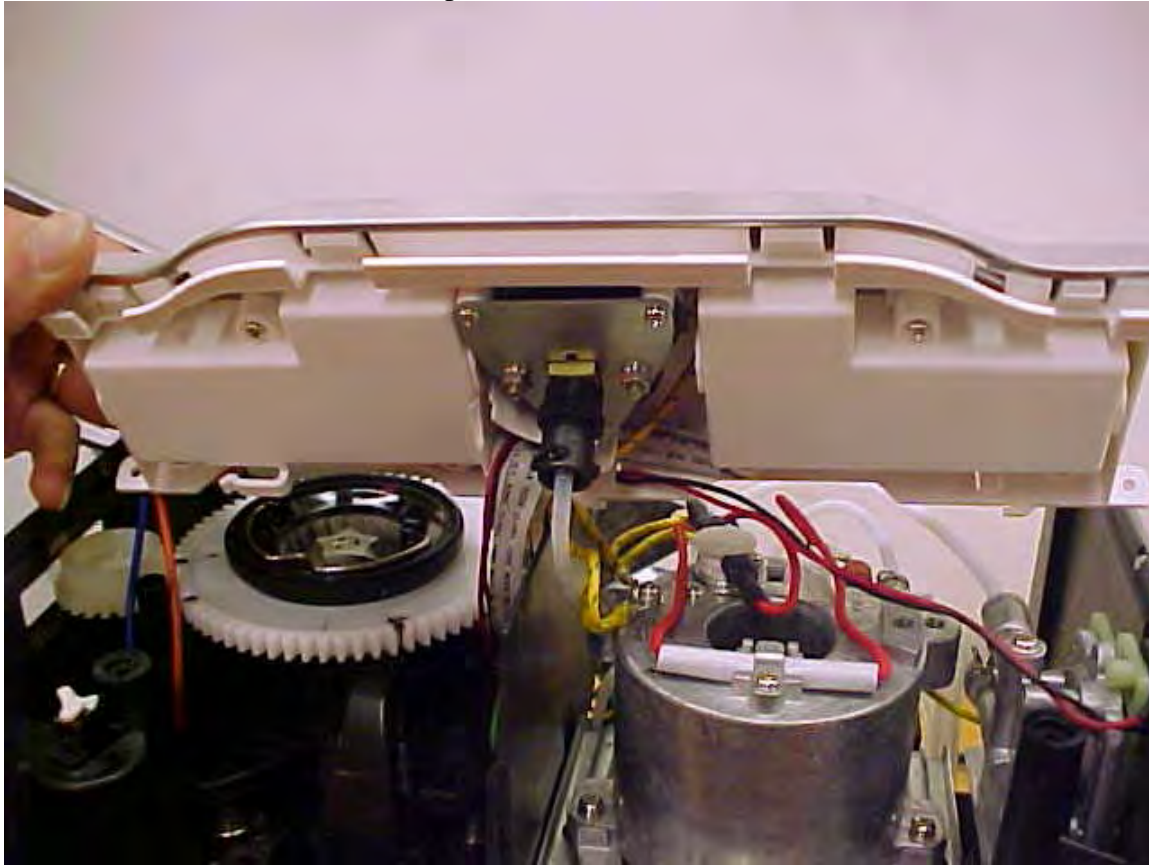


14.5 Grinder assembly can be removed now



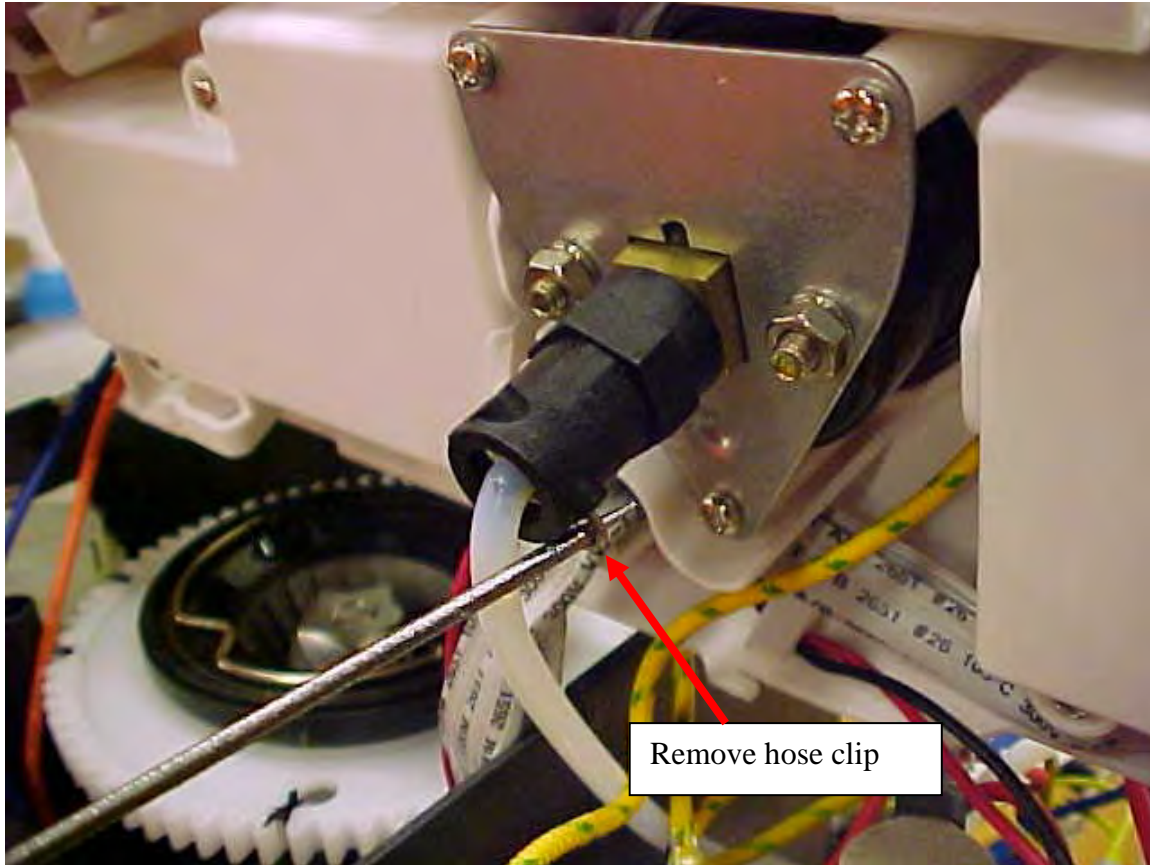
15.0 To Remove Pressure Gauge

15.1 Tilt control panel backwards



15.2

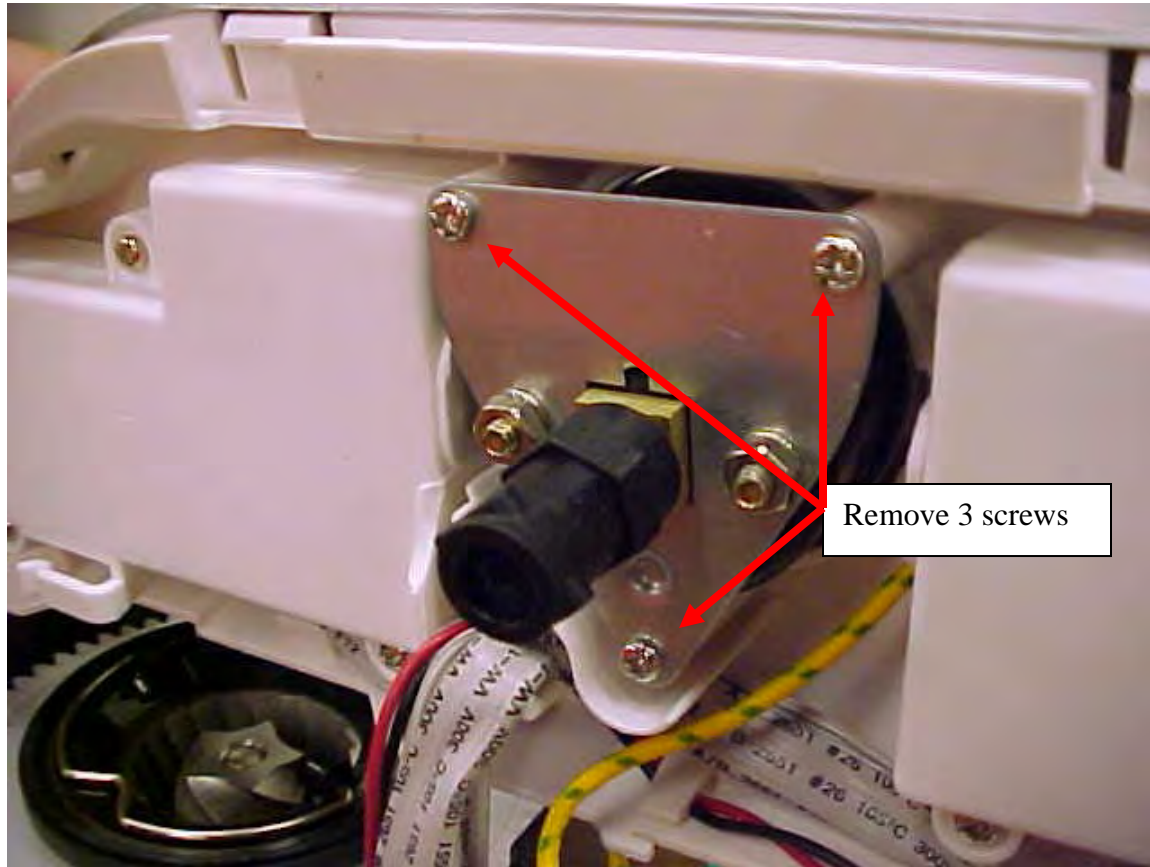
Remove hose clip



Remove hose clip

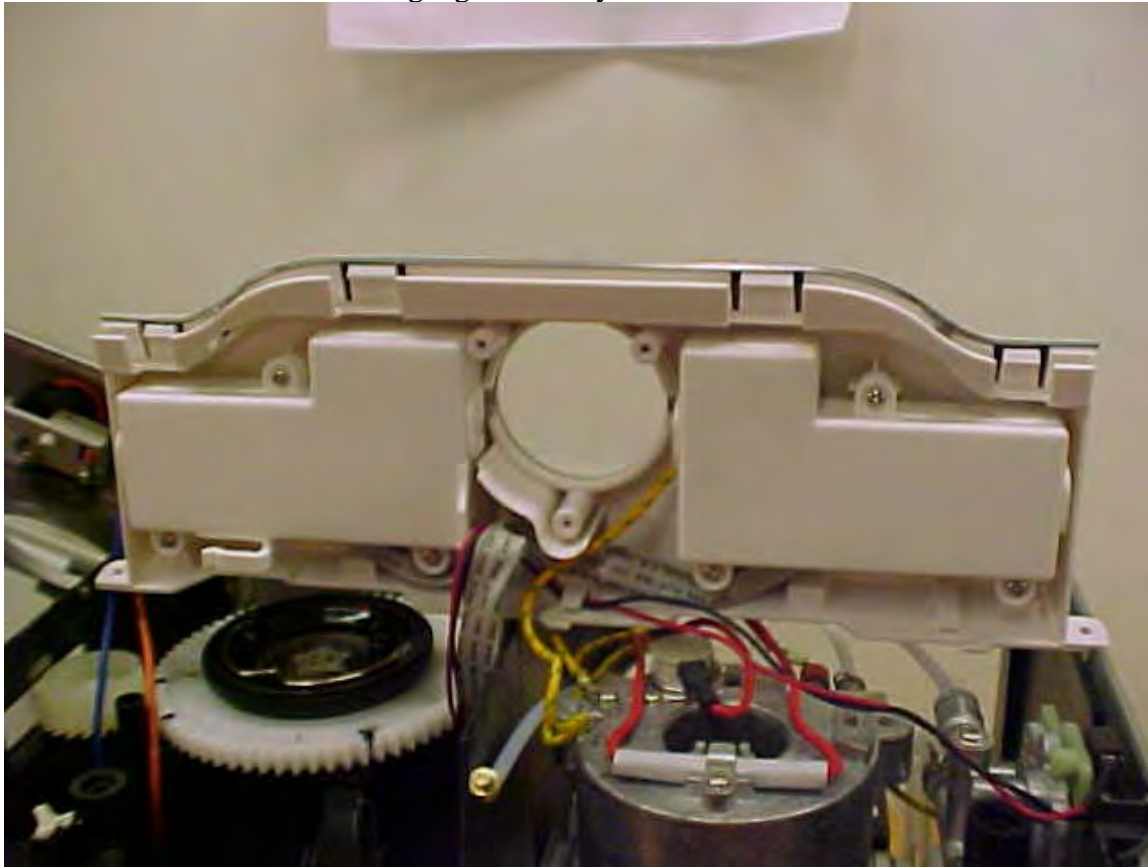
15.3

Undo 3 screws



15.4

Pressure gauge assembly can now be removed



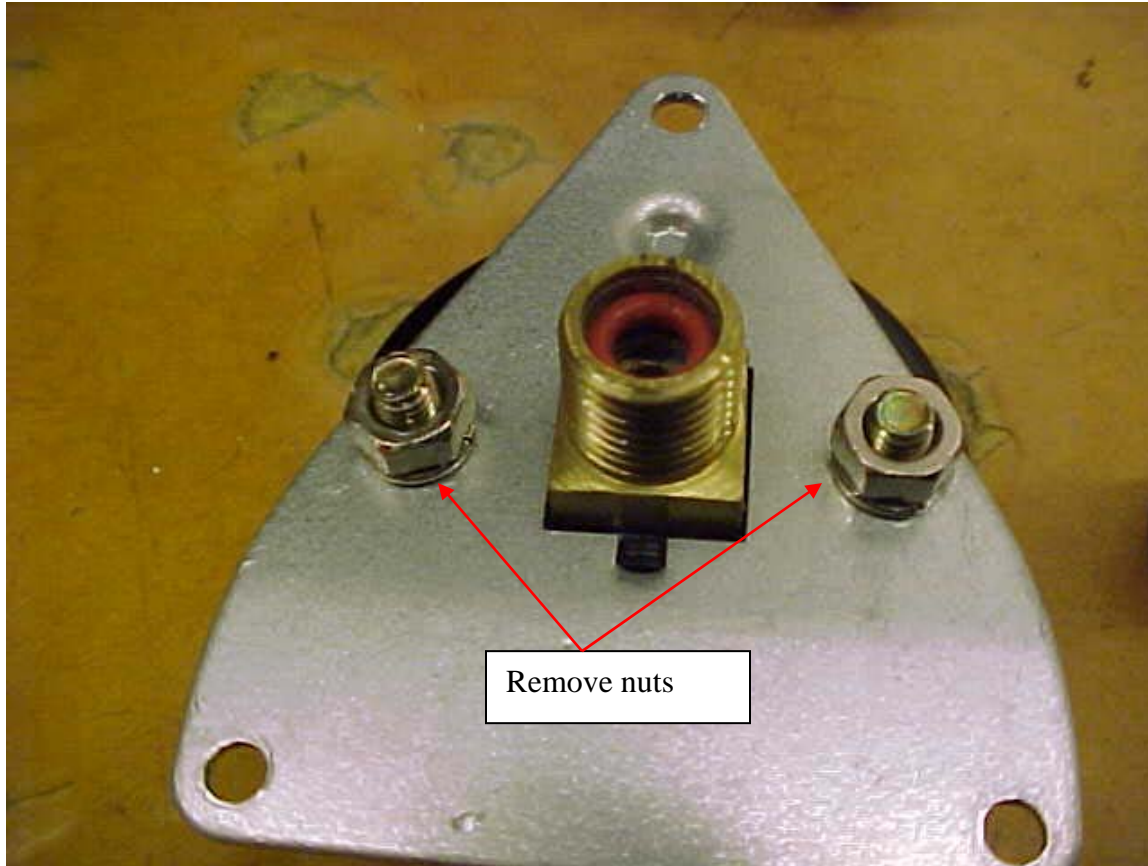
15.5

Undo plastic connector piece



15.6

Remove pressure gauge mounting nuts



16.0 SERVICE DIAGNOSIS TOOLS

16.1 Pressure Gauge not working for units with pdc less than 917

- due to calcium build up in the hose or pressure gauge inlet, change to new type pressure gauge and old type hose without restrictors

16.2 To reset default volumes of coffee in cup:

Reset by pressing and holding program button until the unit beeps 3 times. Then release button. Default volumes are:

- 30ml for one cup
- 60ml for two cups

(**Note:** above measurement is with actual coffee in filter)

16.3 Complaint of not getting Dry puck

- ensure coffee filled into portafilter is tamped upto silver line of the Tamper

16.4 Grind dosing single and double cup lights flashes alternately

- The hopper is not “LOCKED” in position.

16.5 “Clean me” light flashes

- Plug unit and switch on power point. Simultaneously press and hold one cup, two cup and than the power button for 3secs. The cleaning cycle will commence and last for 5mins. Once complete 3 beeps will sound.

16.6

17.0 OTHER TECHNICAL KEY DATA & FEATURES

- **15 bar pump** – Italian designed and made
- **Accurate temperature control** – Breville digital technology provides accurate temperature control for a full flavoured espresso
- **Thermocoil heating system with integrated stainless steel water coil** – ensures accurately controlled water temperature
- **Pre-brew function** – for optimal extraction and distribution of water through the coffee puck
- **Auto purge function** – for optimal coffee extraction temperature
- **Control dry puck feature** – removes excess water from the filter basket after coffee extraction
- **Flat shower head** – for even distribution of water through the coffee puck